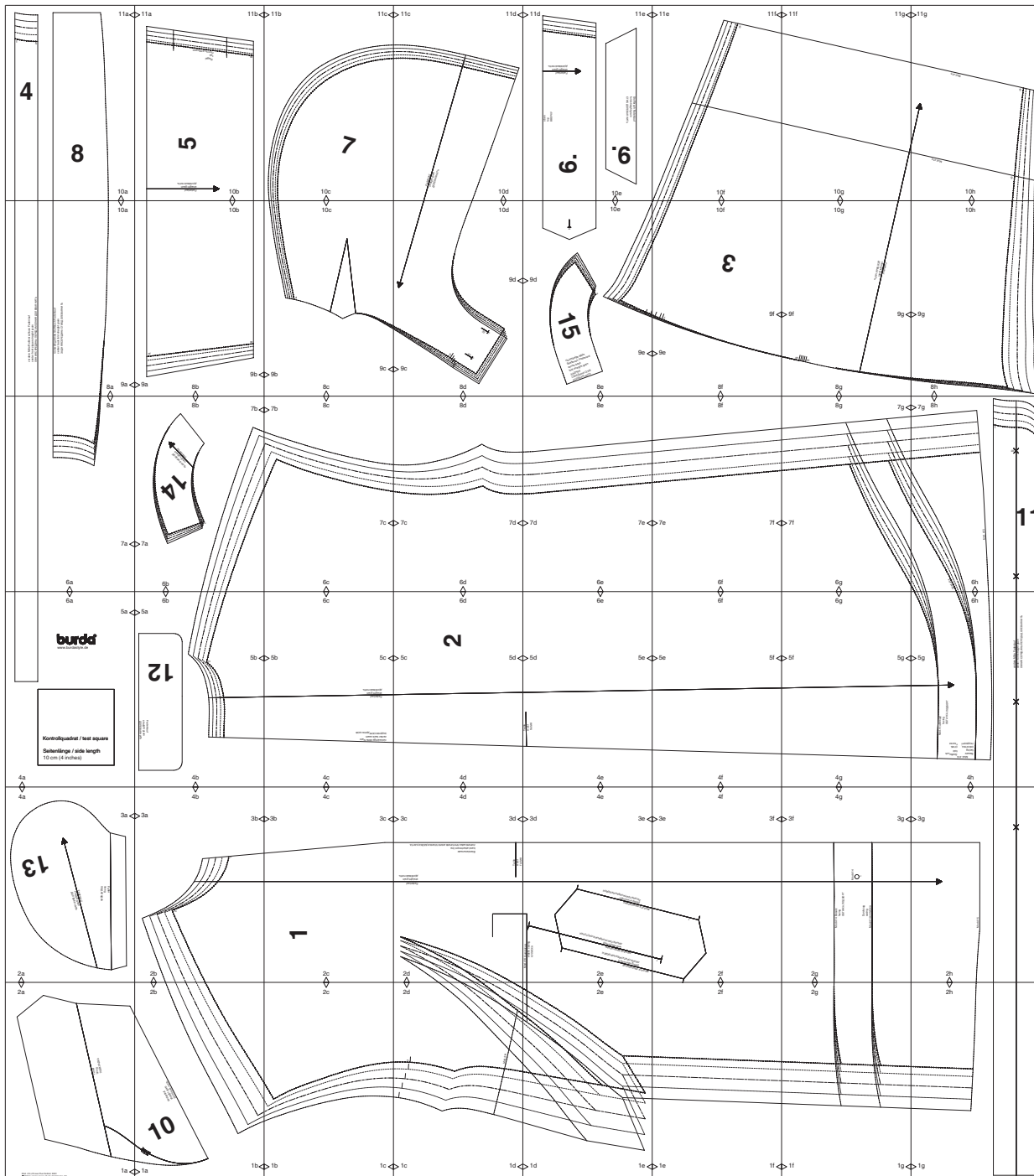


burda Download-Schnitt

Modell 414 Plus Modes E091

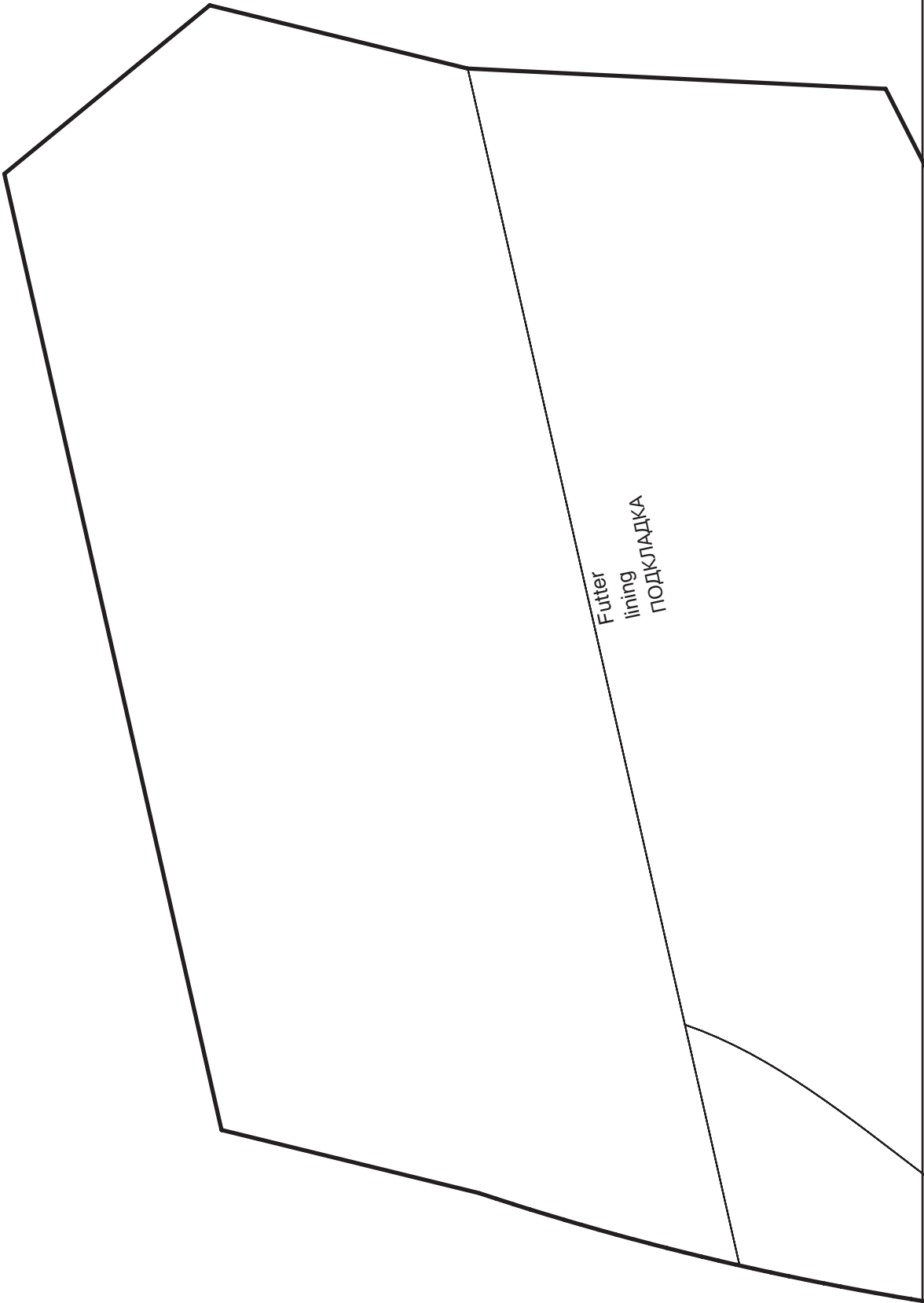


Copyright 2016 by Verlag Aenne Burda GmbH & Co. KG, Hubert-Burda Platz 2, D-77652 Offenburg

Sämtliche Modelle, Schnittteile und Zeichnungen stehen unter Urheberschutz, gewerbliches Nacharbeiten ist untersagt.

Der Verlag haftet nicht für Schäden, die durch unsachgemäße Handhabung des Schnitts, der Materialien, unsachgemäße Ausführung der Tipps und Anleitungen oder unsachgemäße Nutzung der Modelle entstehen.

2a



1a

2b

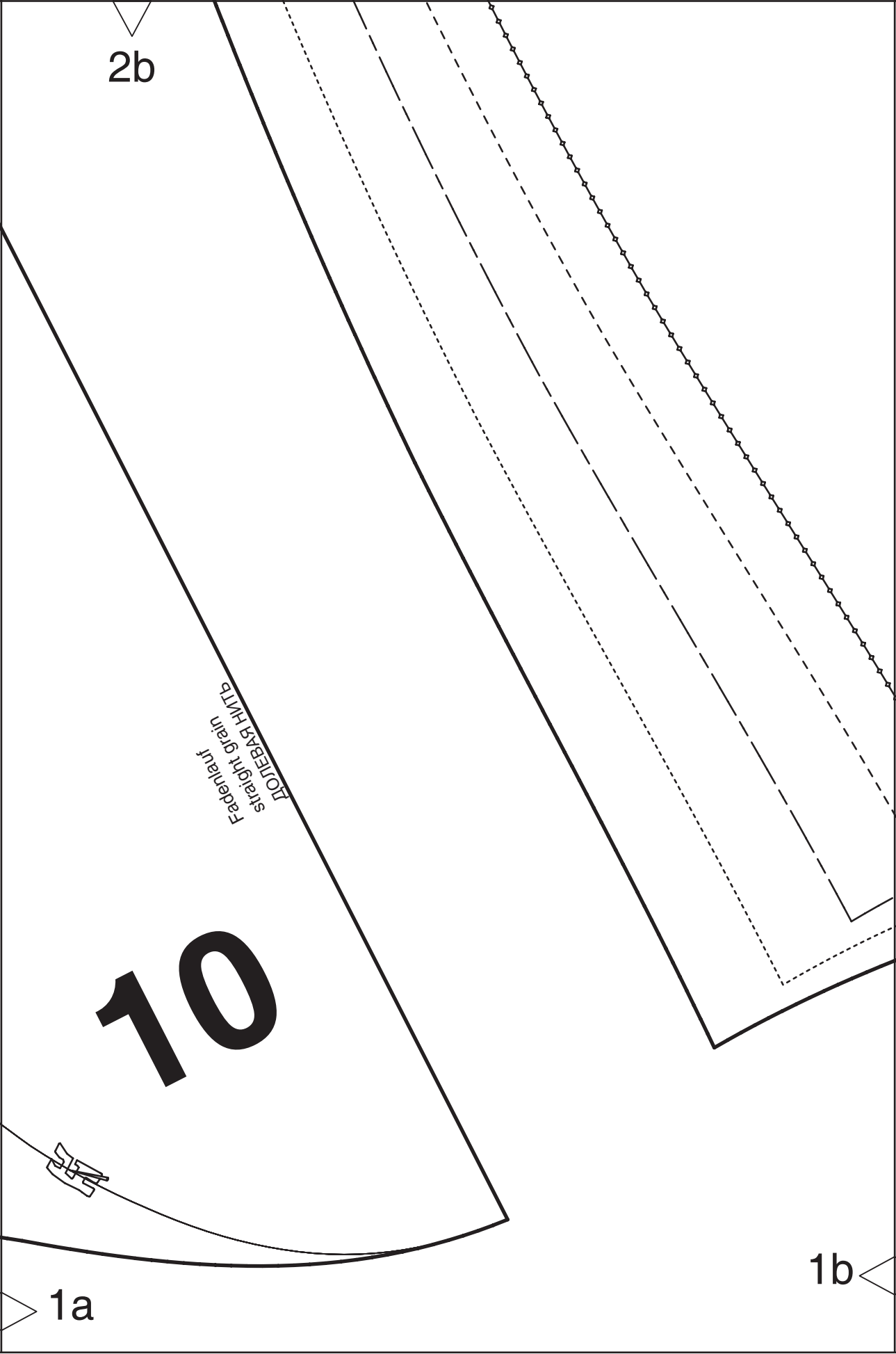
Federal
straight grain
POTBK HHTS

10

10

1a

1b



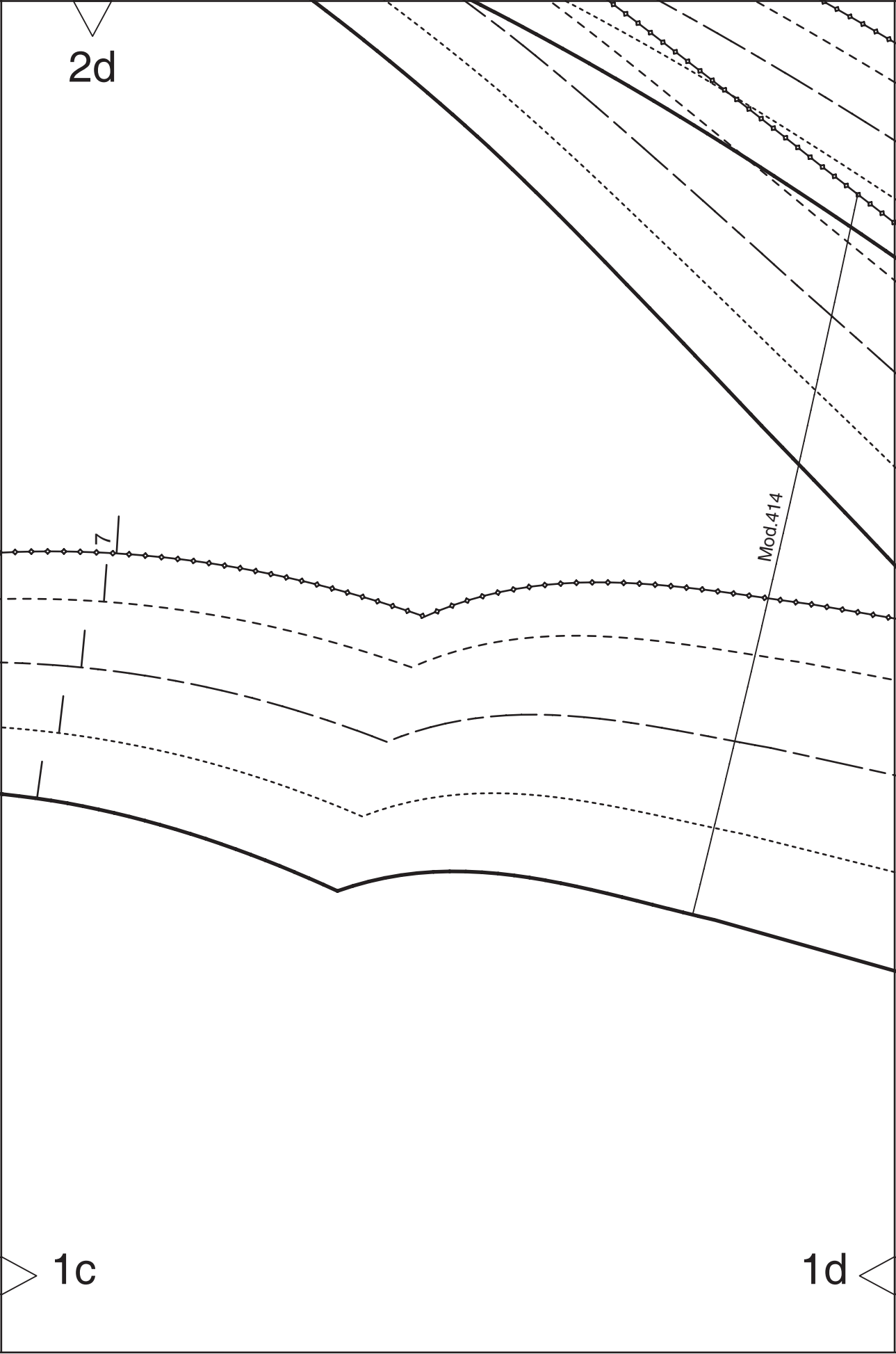
2c



1b

1c

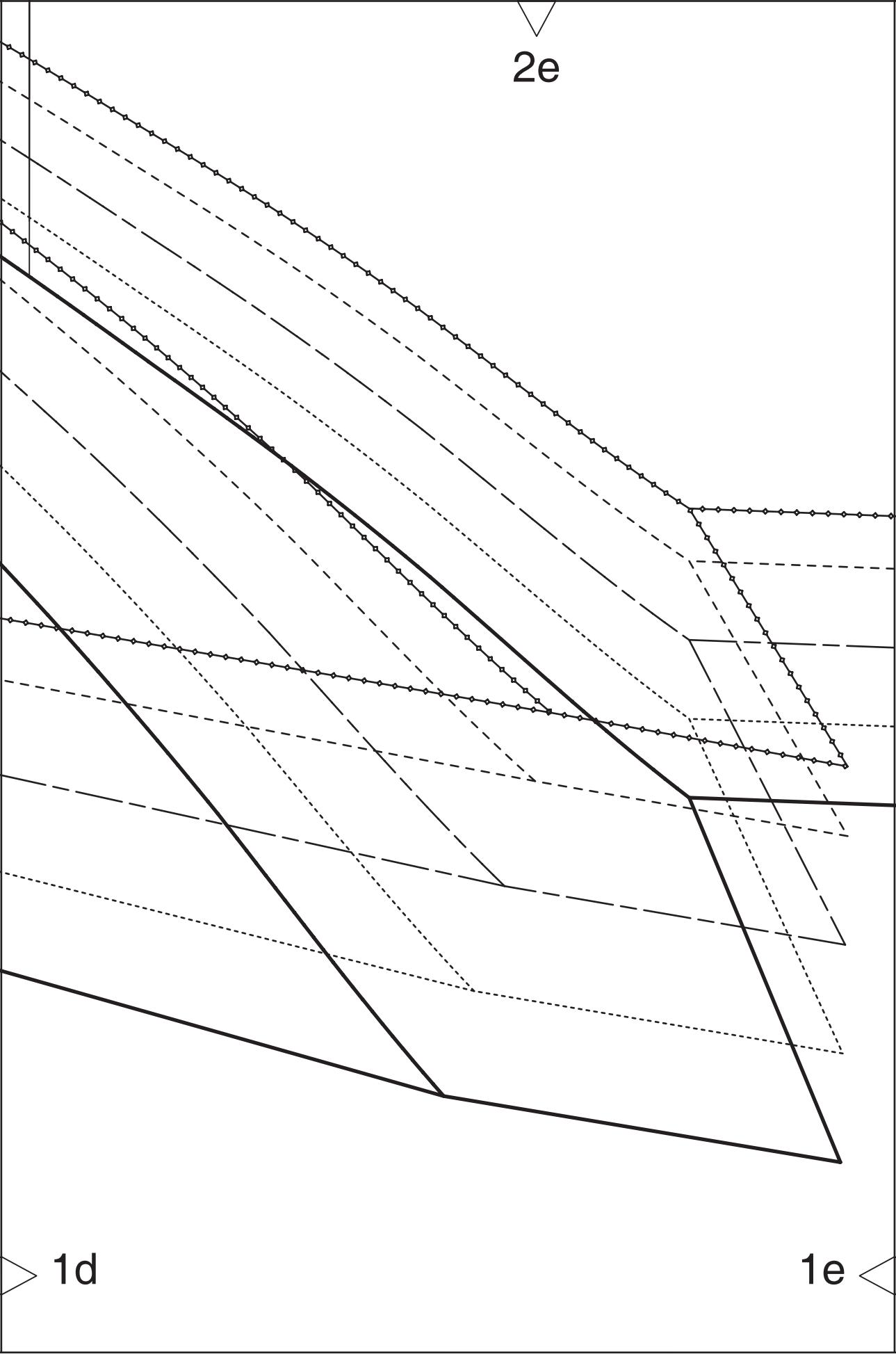
2d



Mod.414

1c

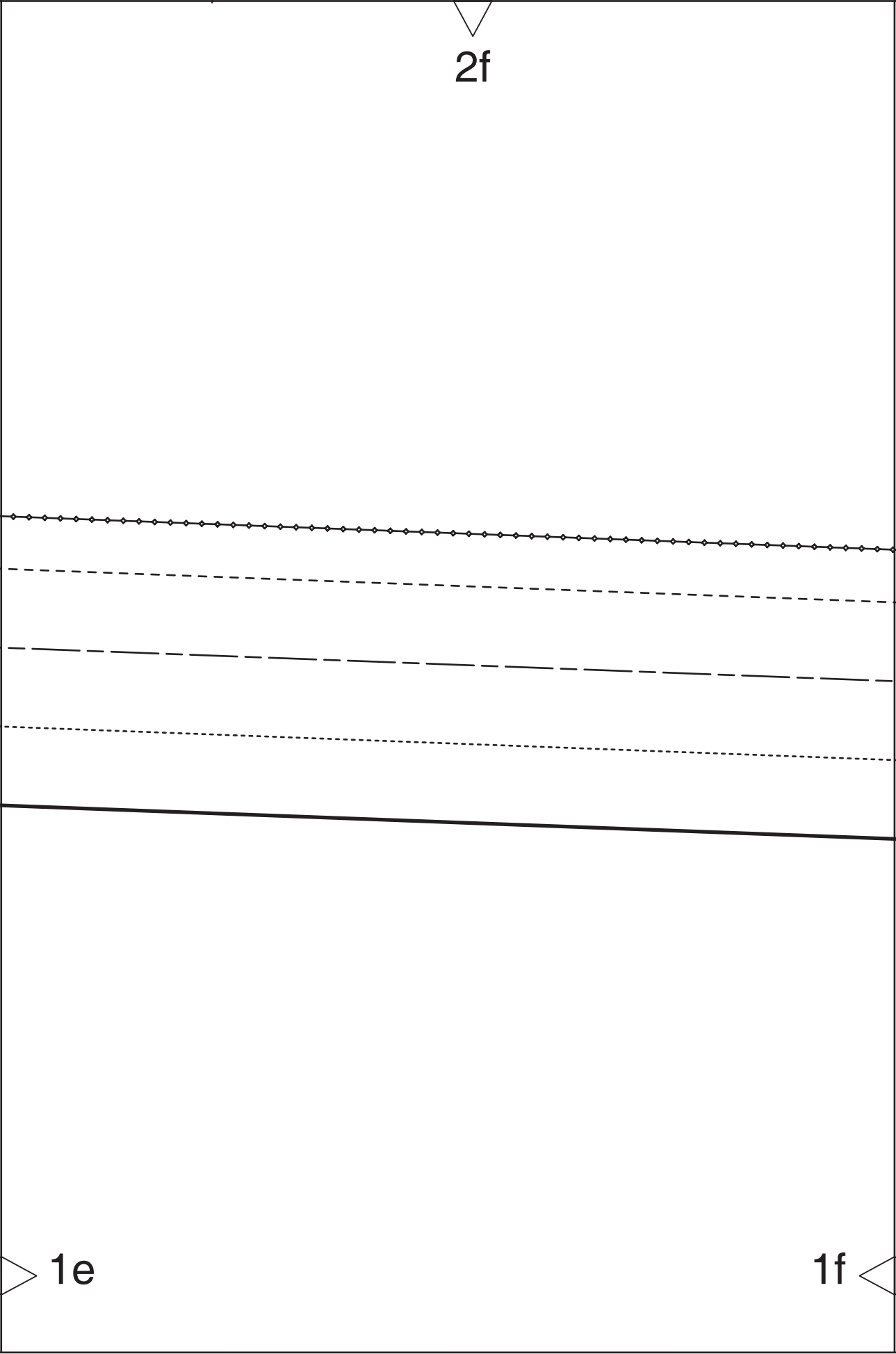
1d



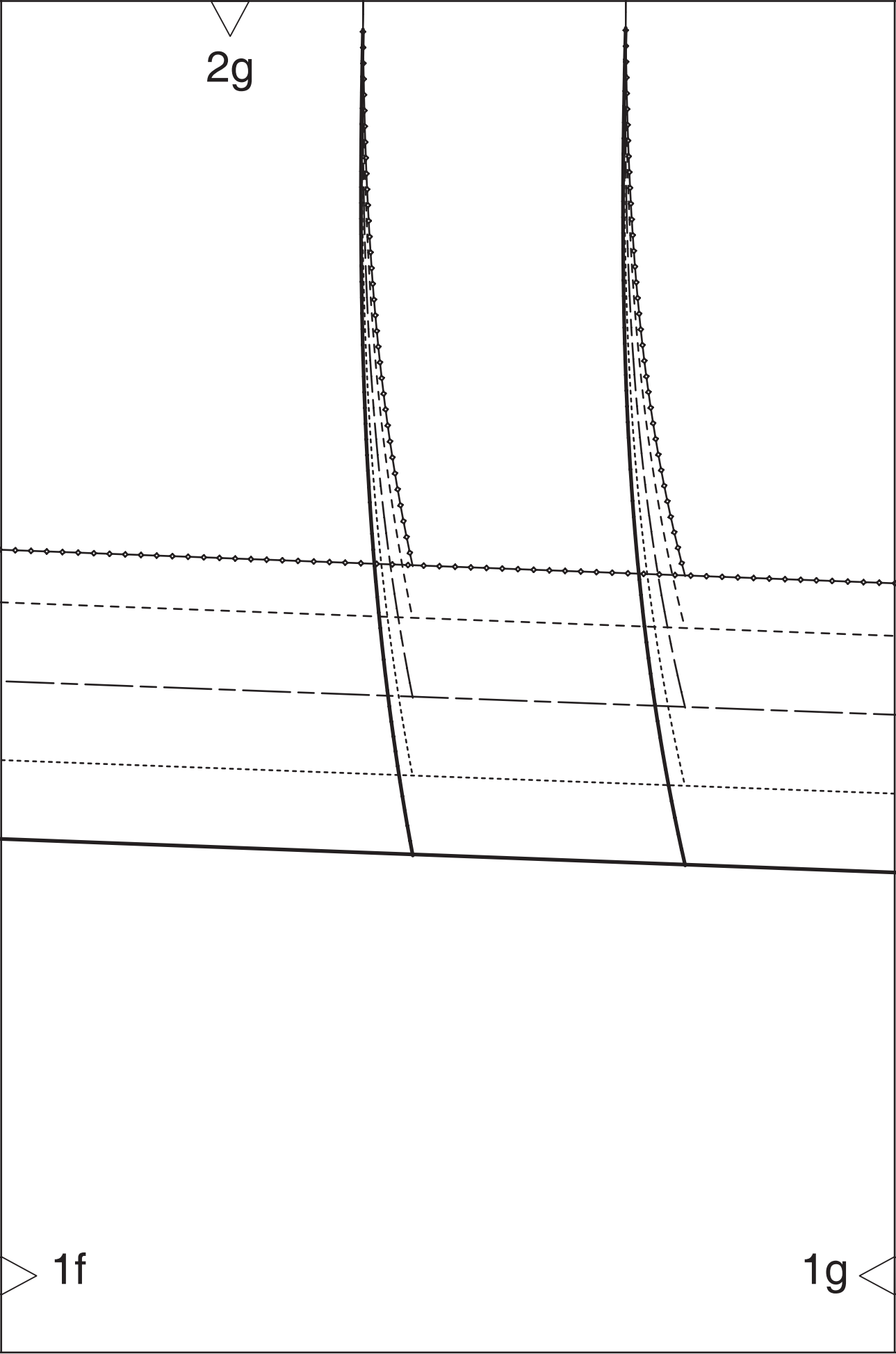
2f

1e

1f



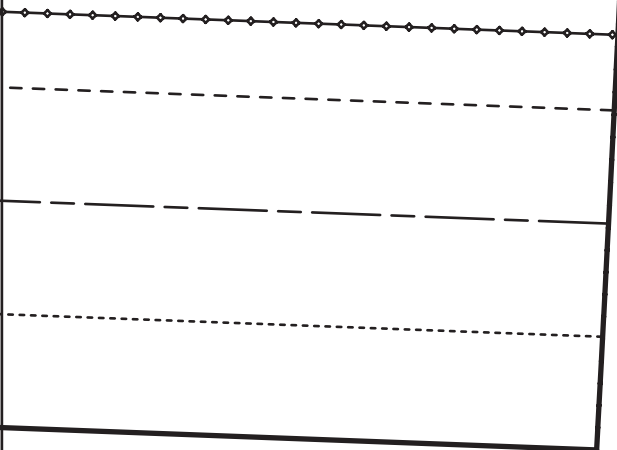
2g



1f

1g

2h



1g



4a

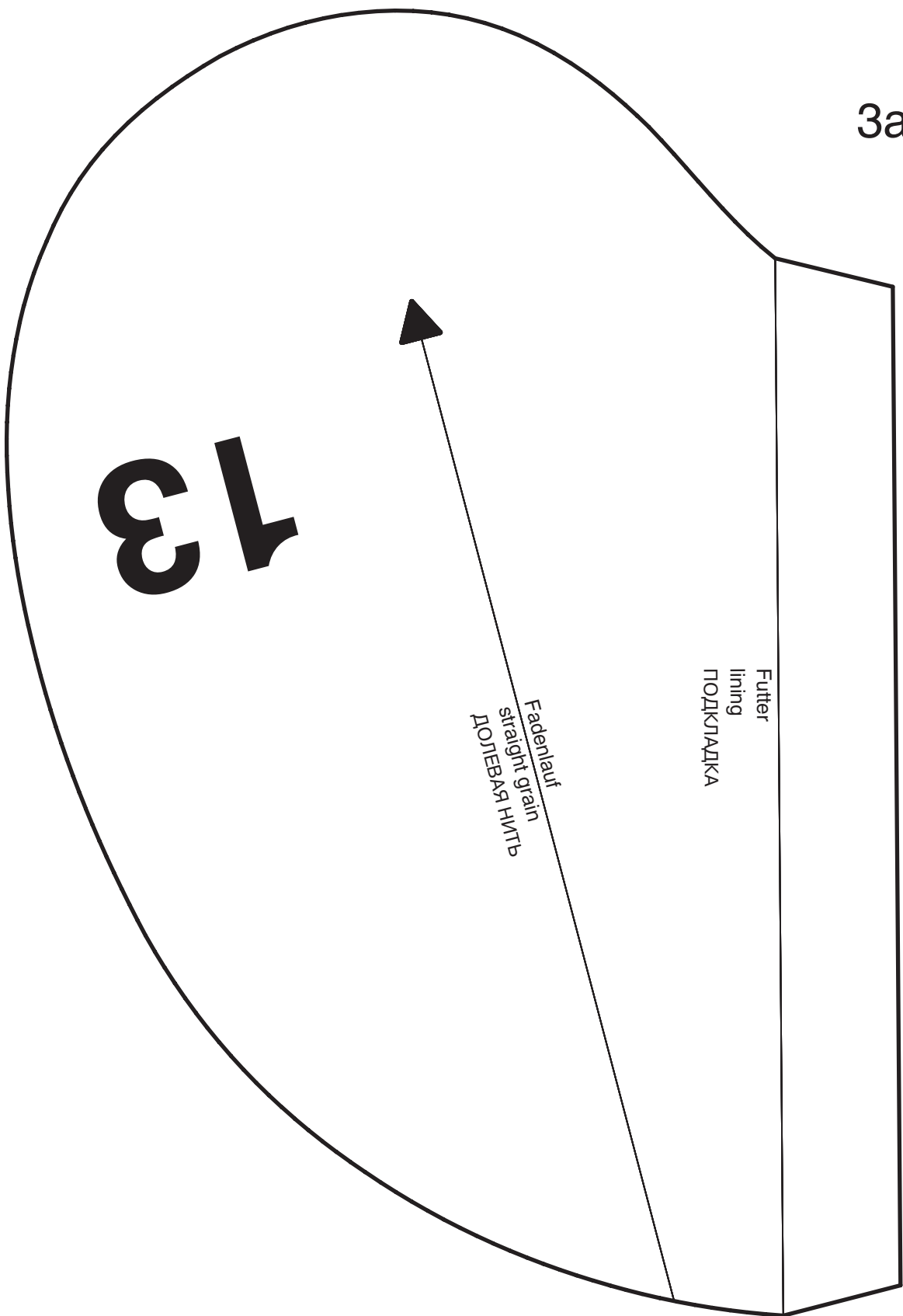
3a

13

Fadenlauf
straight grain
ДОПЕБАЯ НМТБ

Futter
lining
ПОДКЛАДКА

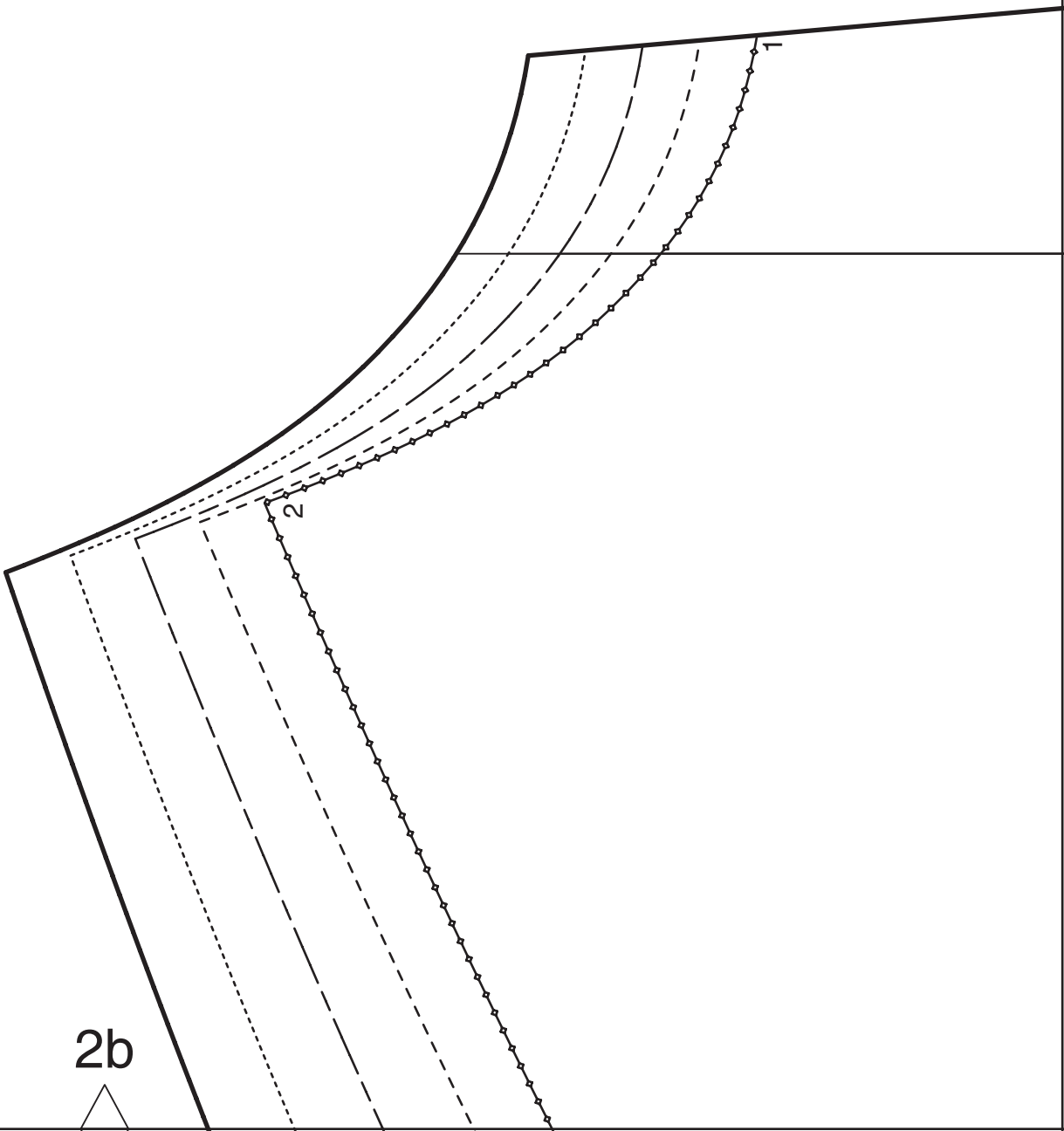
2a



4b

3a

3b



2b

2

4c

3b

3c

2c



4d

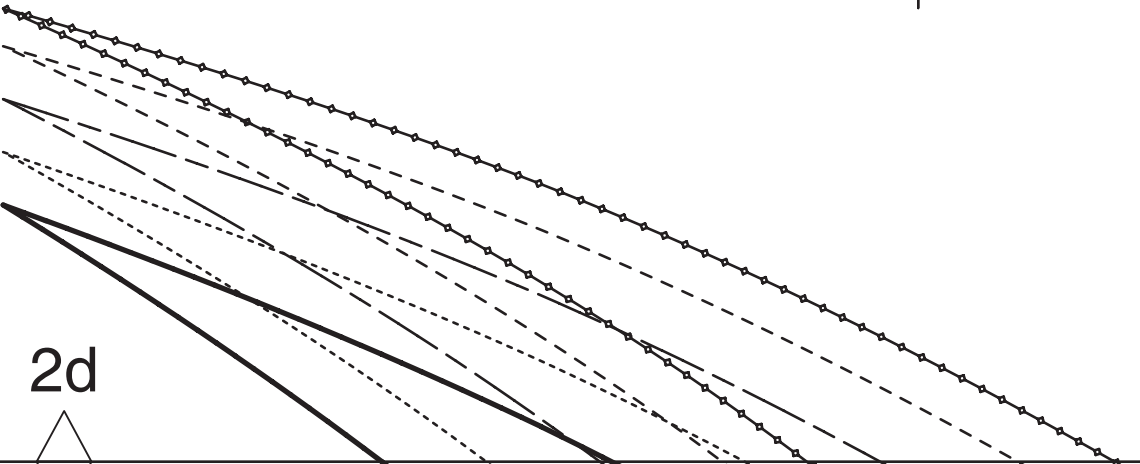
3c

3d

Blendenansatz
band attachment line
ЛИНИЯ ШВА ПРИТАЧИВАННЯ ПЛАНКИ, БЕЙКИ, КАНТА

Taille
waist
ТАЛІЯ

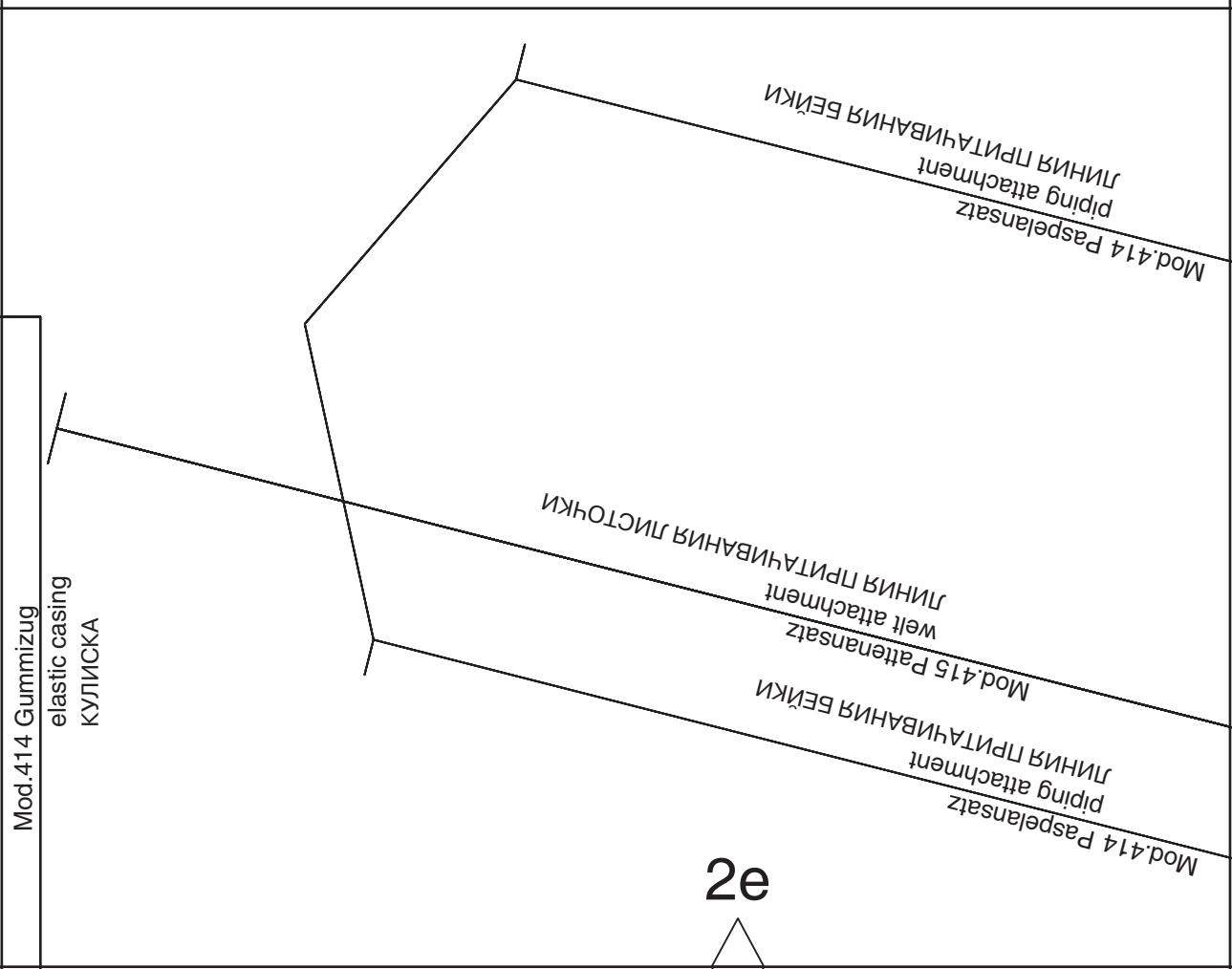
Fadenlauf
straight grain
ДОЛБЕВАЯ НИТЬ



4e

3d

3e



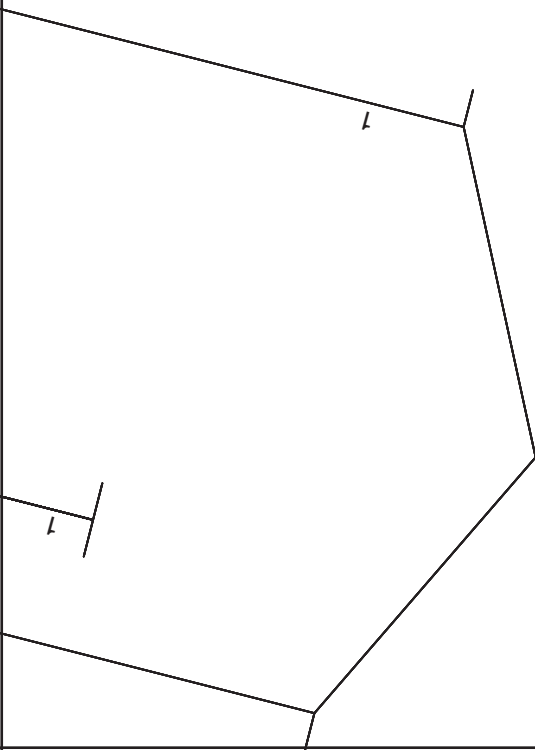
2e

4f

3e

3f

2f



4g

3f

3g

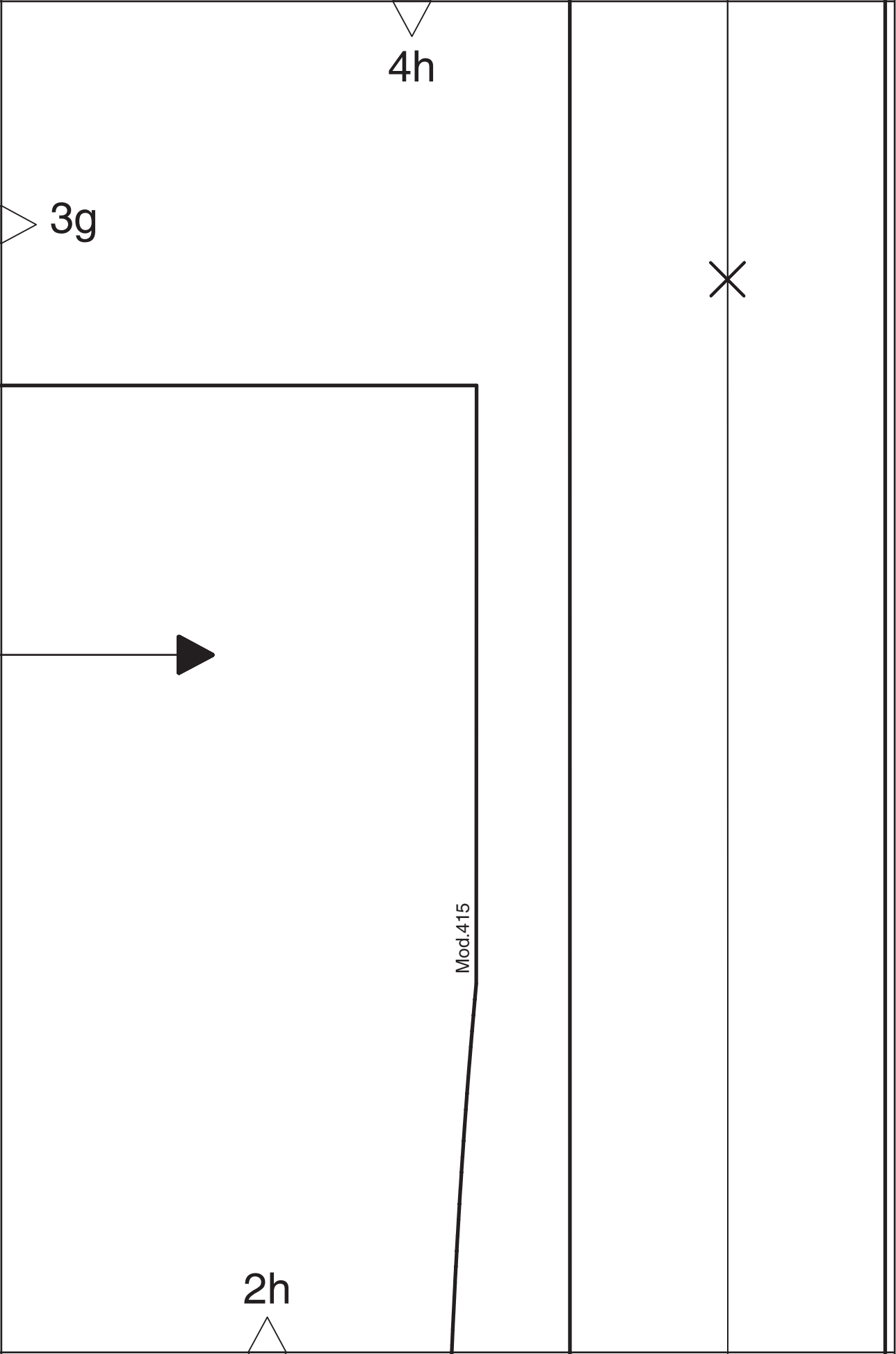
Mod.414



Mod.414 Besatz
facing
ОБТАЧКА, ПОДБОРТ

Durchzug
casing
Mod.414 КУЛИСКА

2g



6a

5a

burda[®]

www.burdastyle.de

Kontrollquadrat / test square

Seitenlänge / side length

10 cm (4 inches)

4a

6b

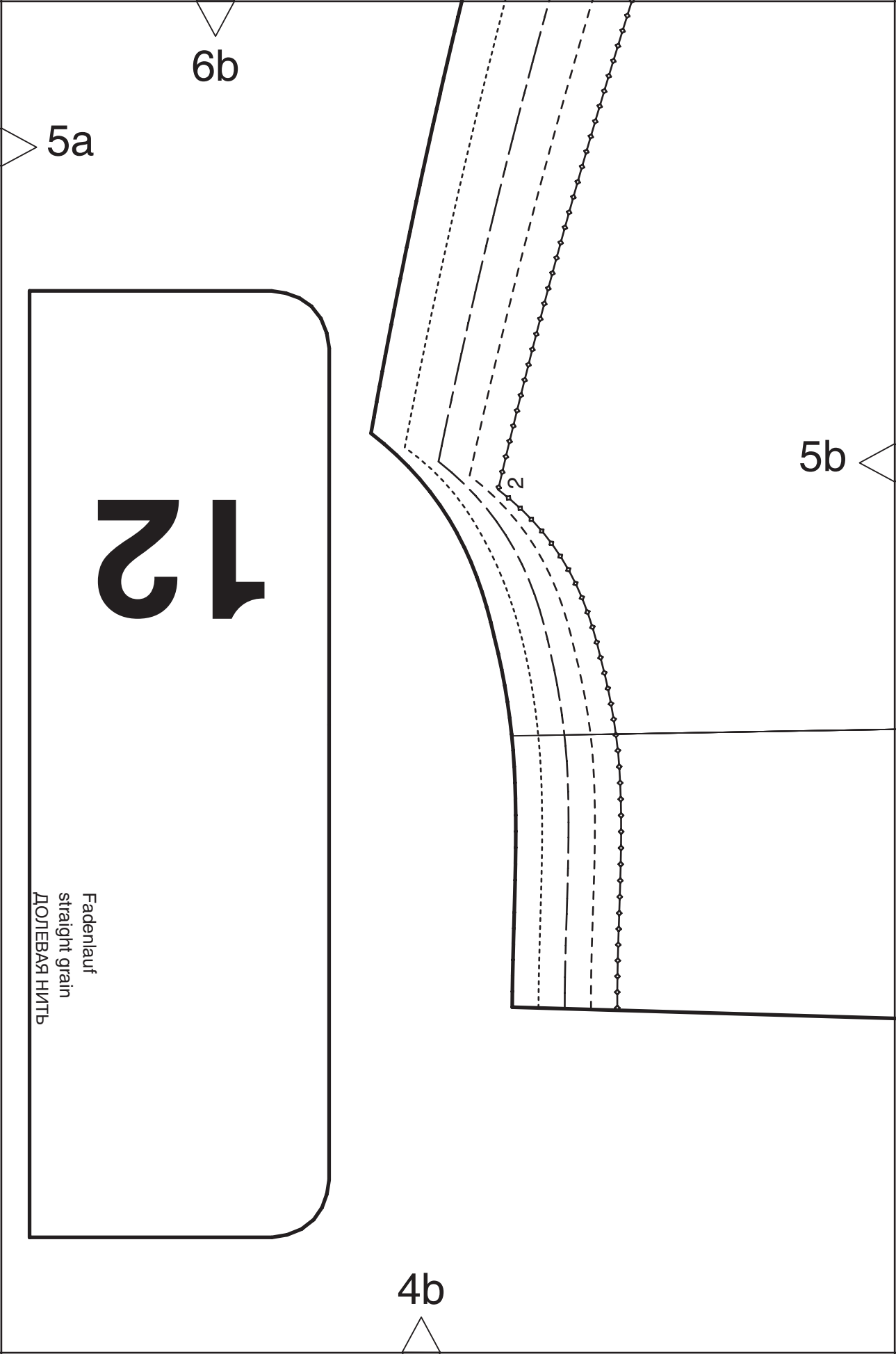
5a

12

Fadenlauf
straight grain
ДОЛБЕВАЯ НИТЬ

5b

4b



6c

5b

5c

Долгевая нить
straight grain
Fadenlauf

Задняя середина шва
center back seam
rückwärtige Mitte Naht

4c

6d

2

5c

5d

4d

6e

5d

5e

Taille
waist
ТАЛИЯ

4e

A diagram of a rectangular frame with three horizontal lines. The top edge is labeled '6f' with a downward-pointing triangle. The left edge is labeled '5e' with a rightward-pointing triangle. The right edge is labeled '5f' with a leftward-pointing triangle. The bottom edge is labeled '4f' with an upward-pointing triangle.

6f

5e

5f

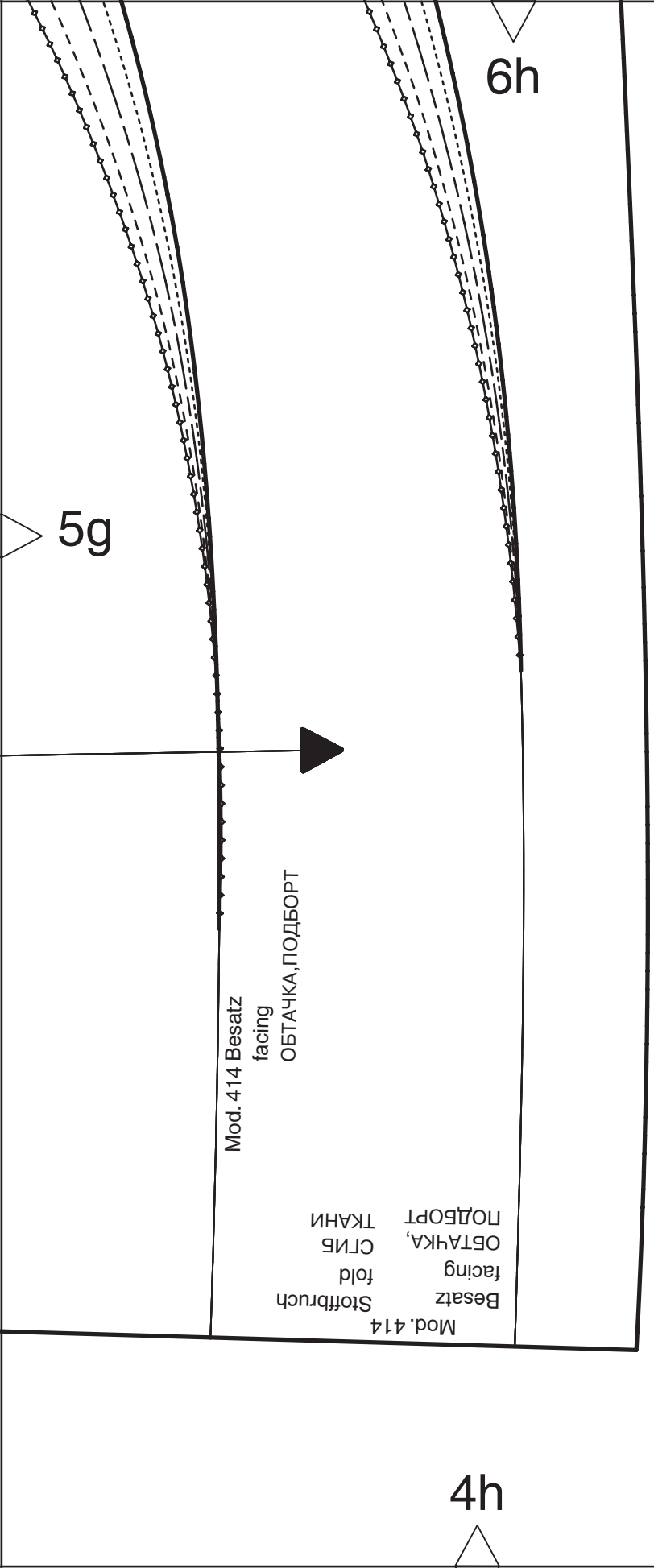
4f

6g

5f

5g

4g



6h

5g

4h

Mod. 414 Besatz
facing
ОБТАЧКА, ПОДБОРТ

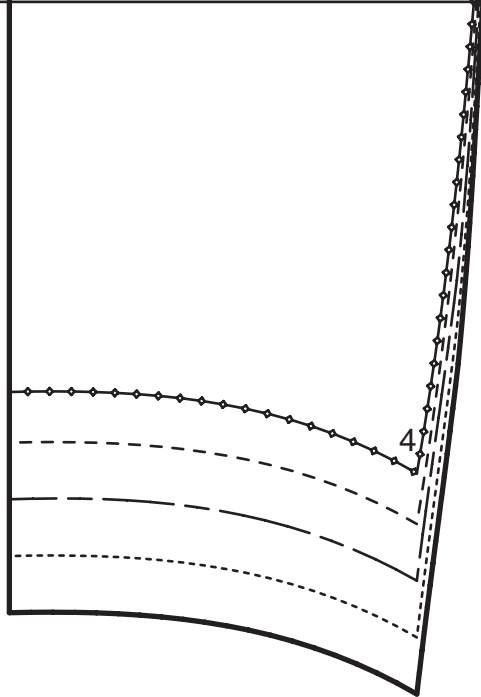
Mod. 414
Besatz
facing
fold
Stoffbruch
ОБТАЧКА,
СГИБ
ПОДБОРТ
ТАНИ

vordere Mitte Fadenlauf

center front straight grain

ЛИНИЯ СЕРЕДИНЫ ПЕРЕДА ДОЛЕВАЯ НИТЬ





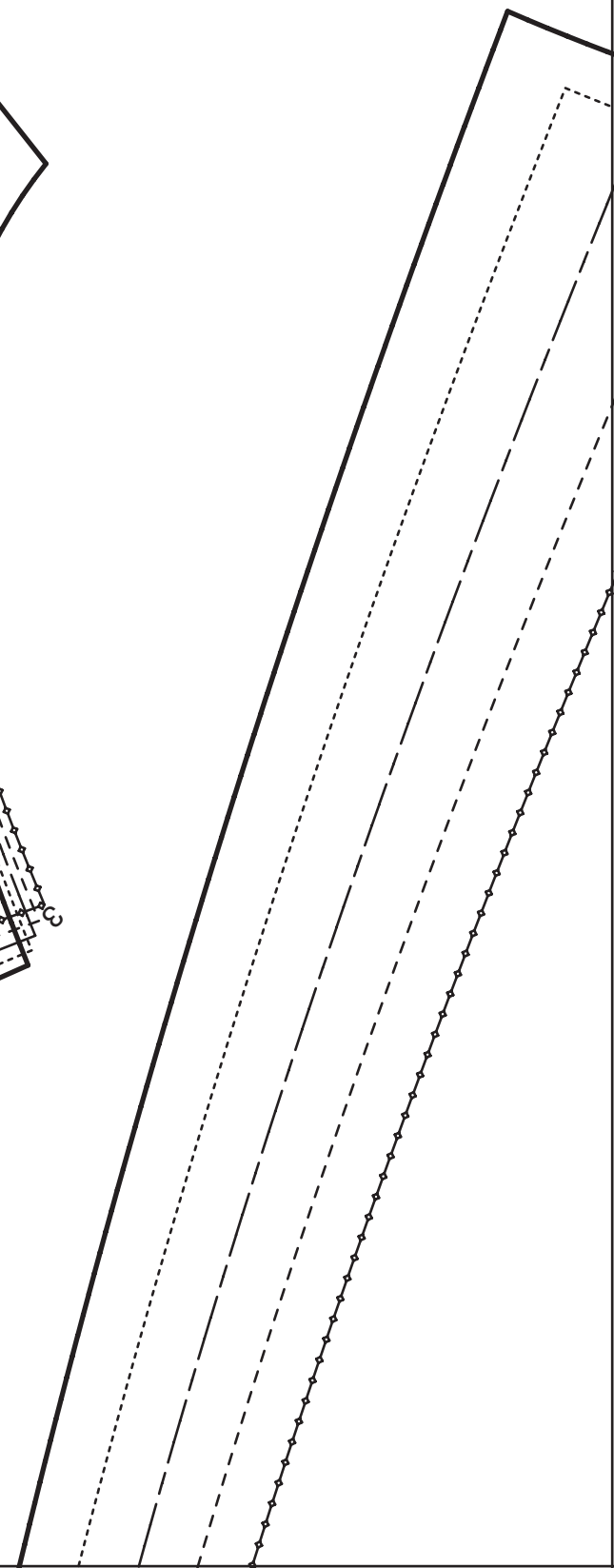
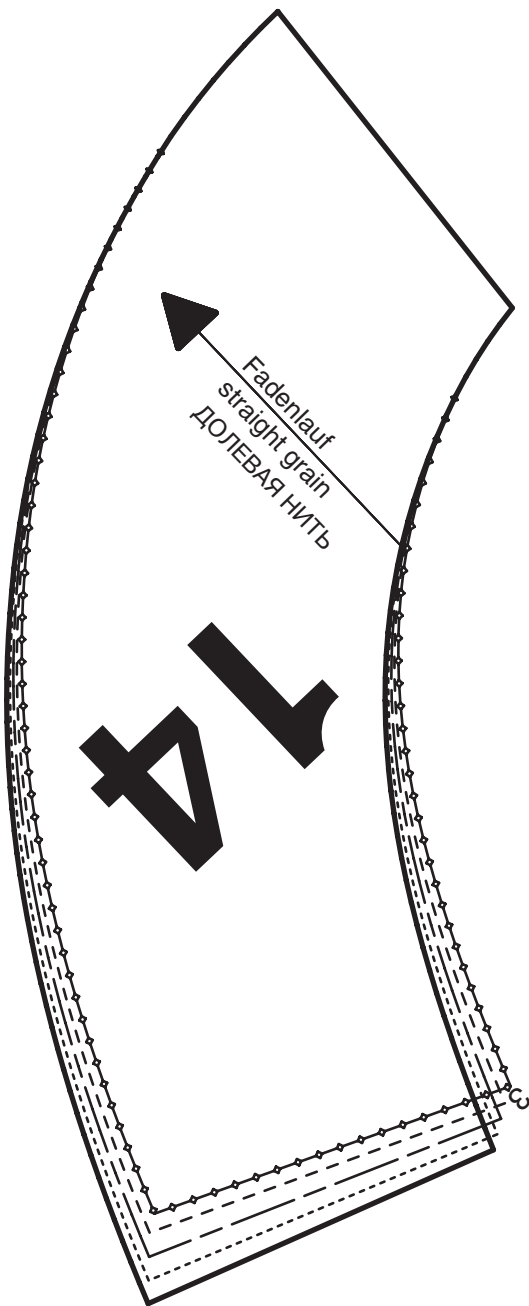
8a

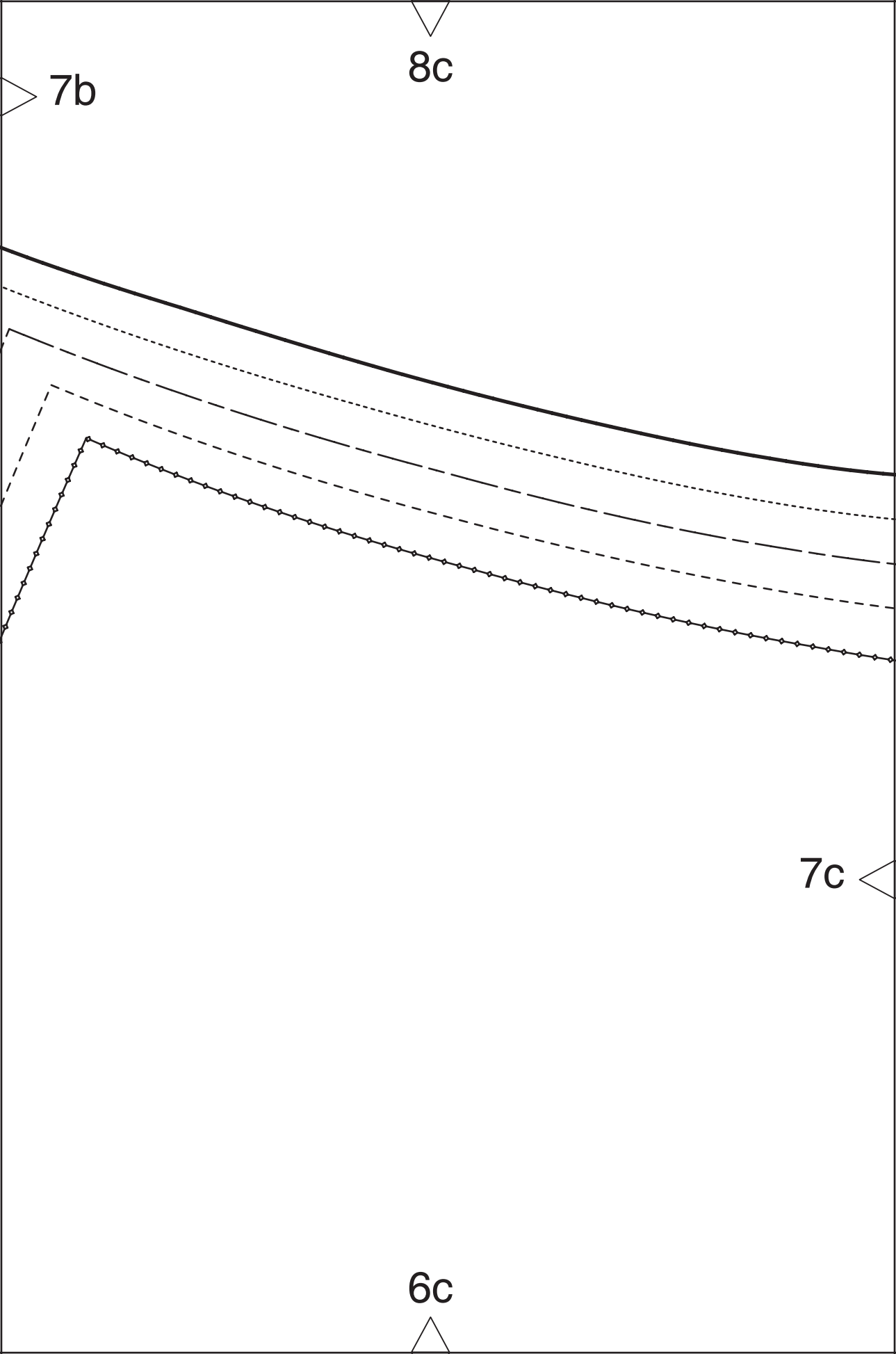
7a

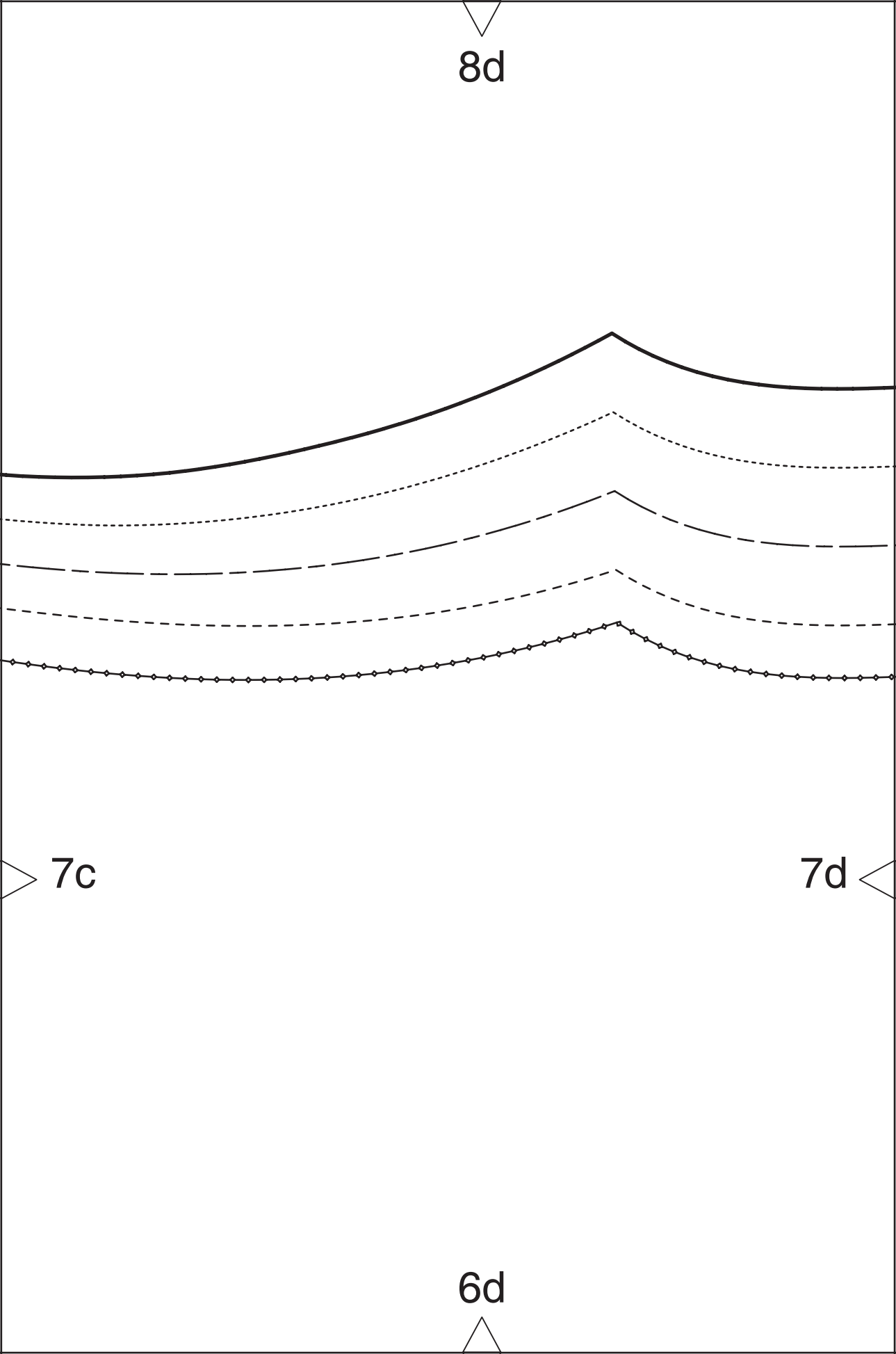
6a

8b

7b





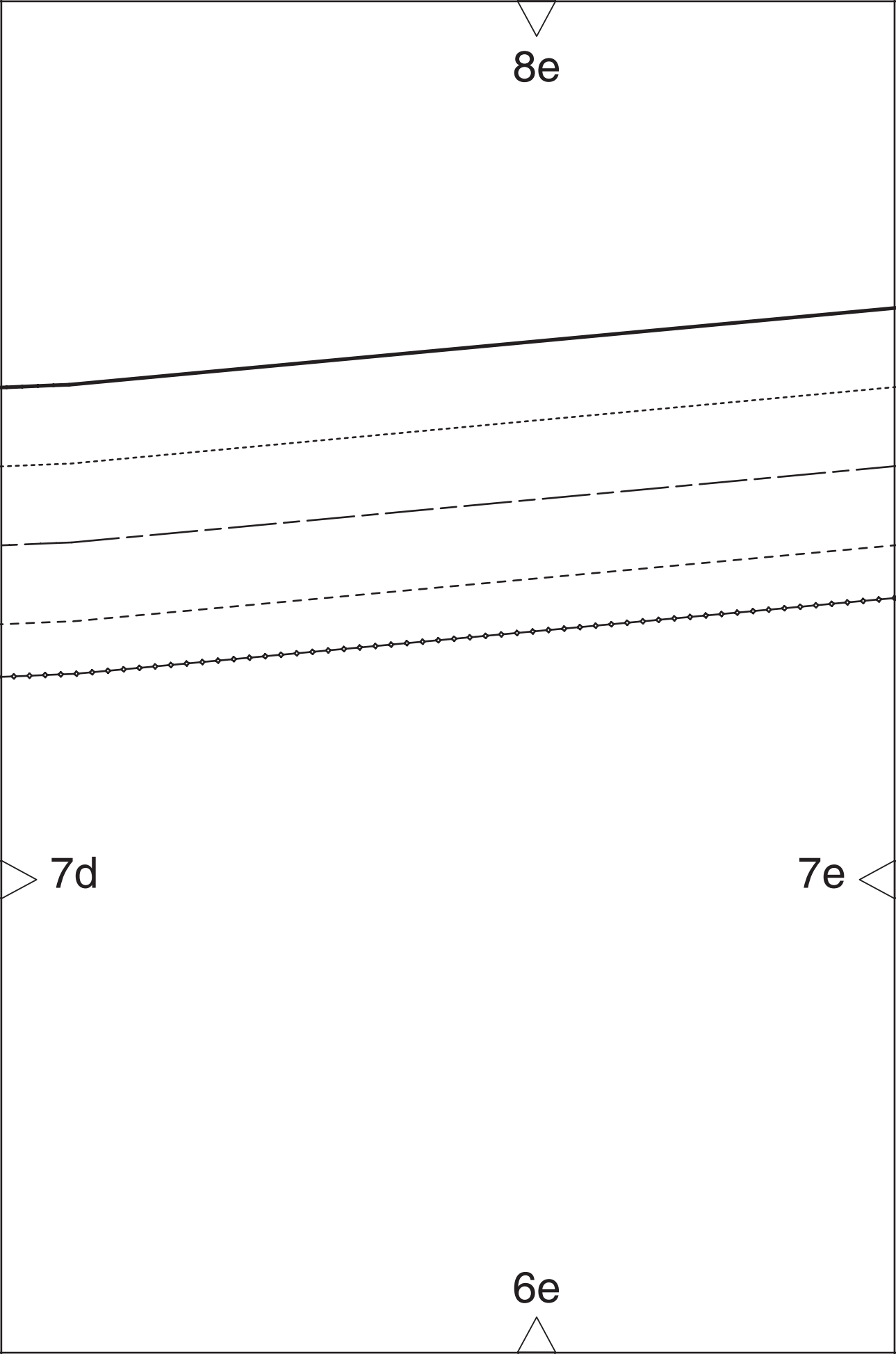


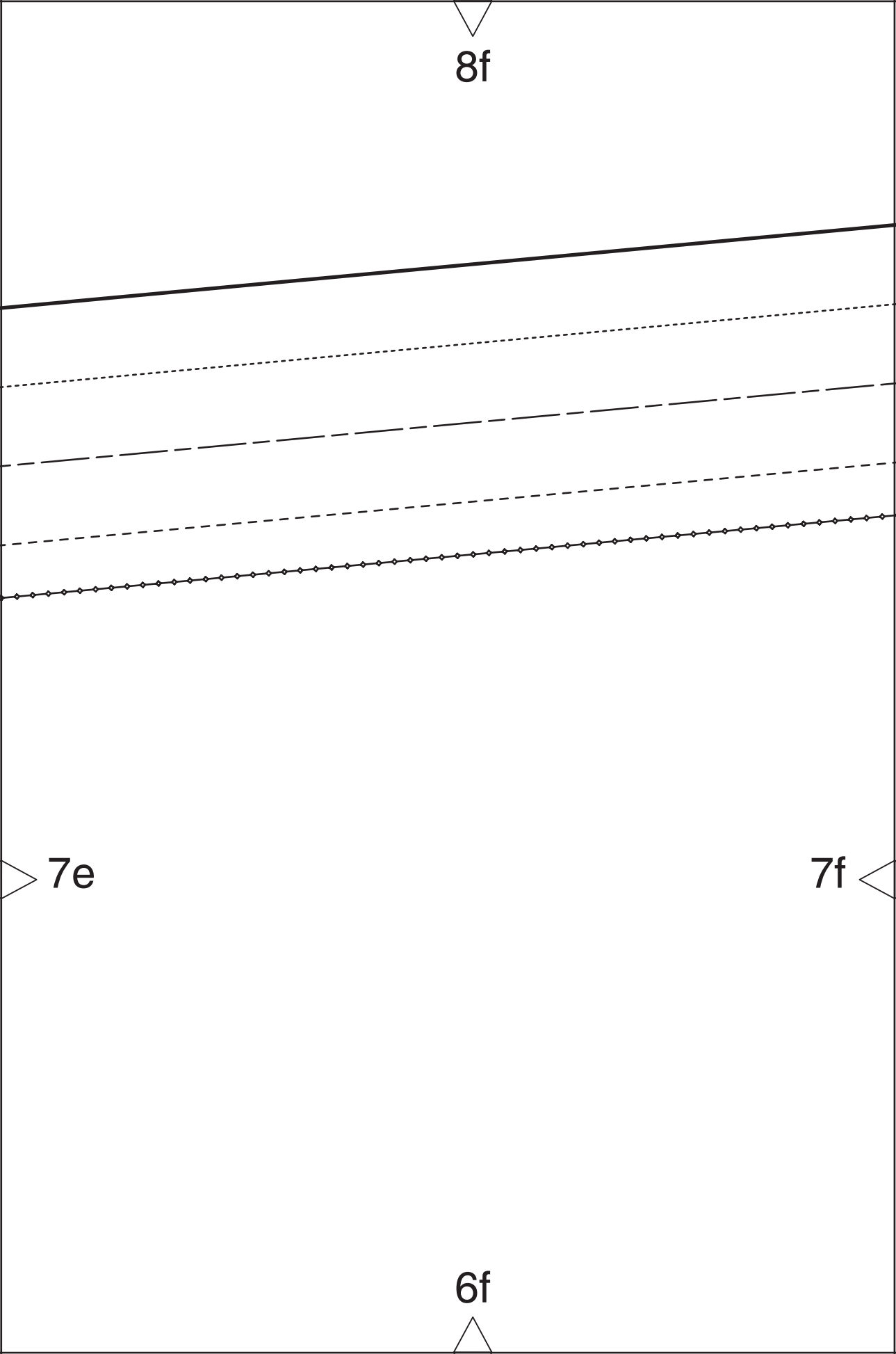
8d

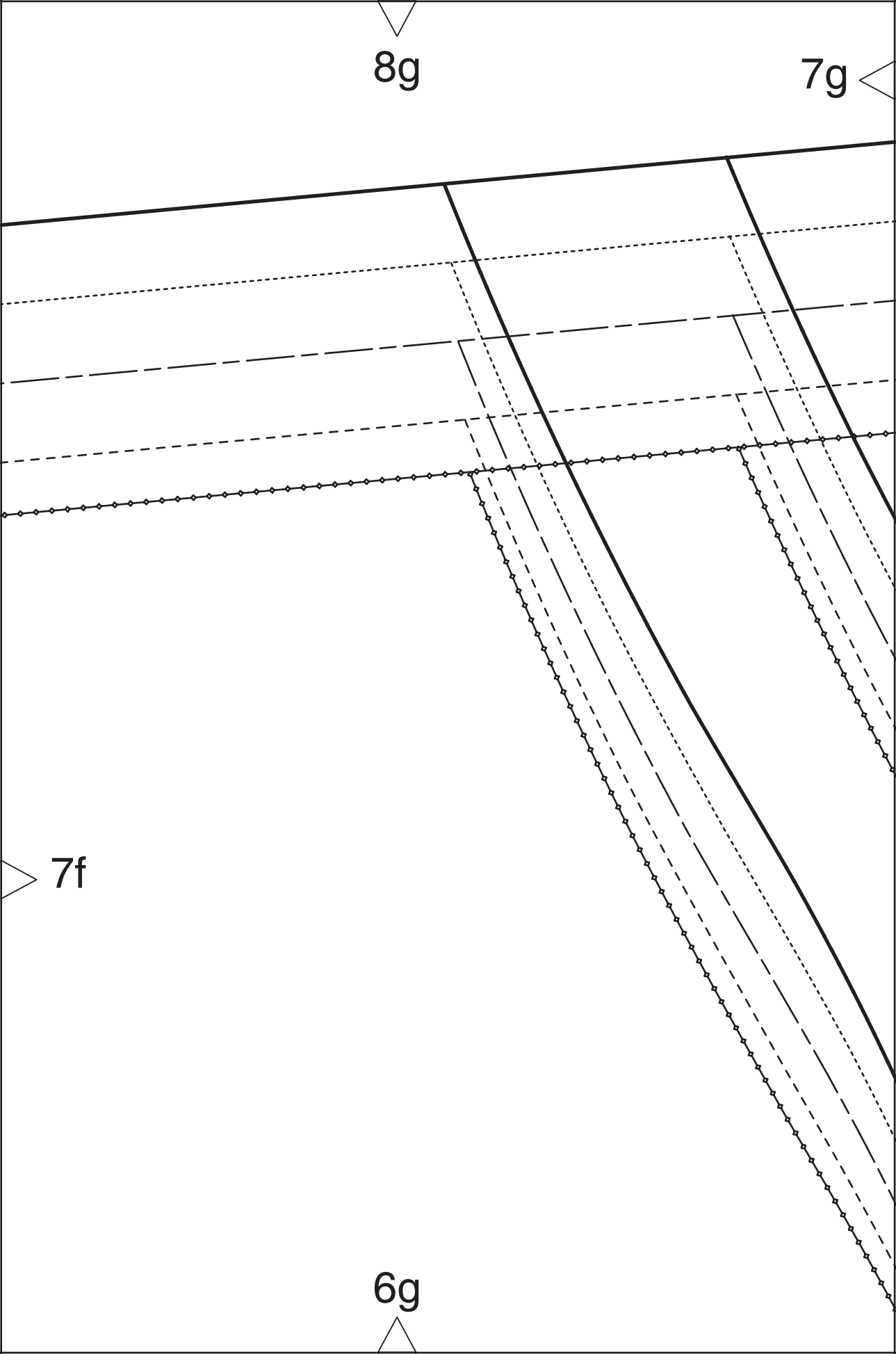
7c

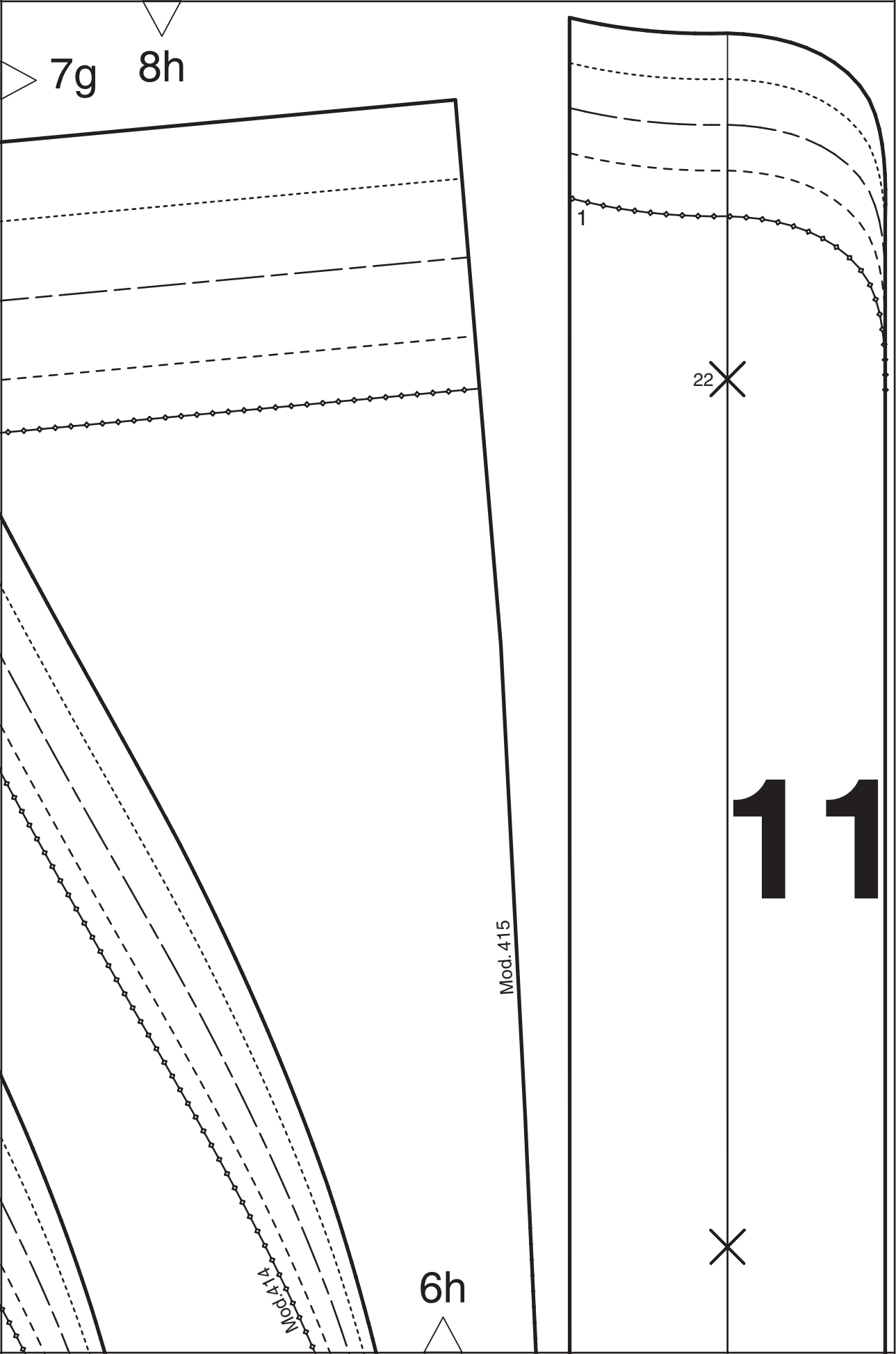
7d

6d









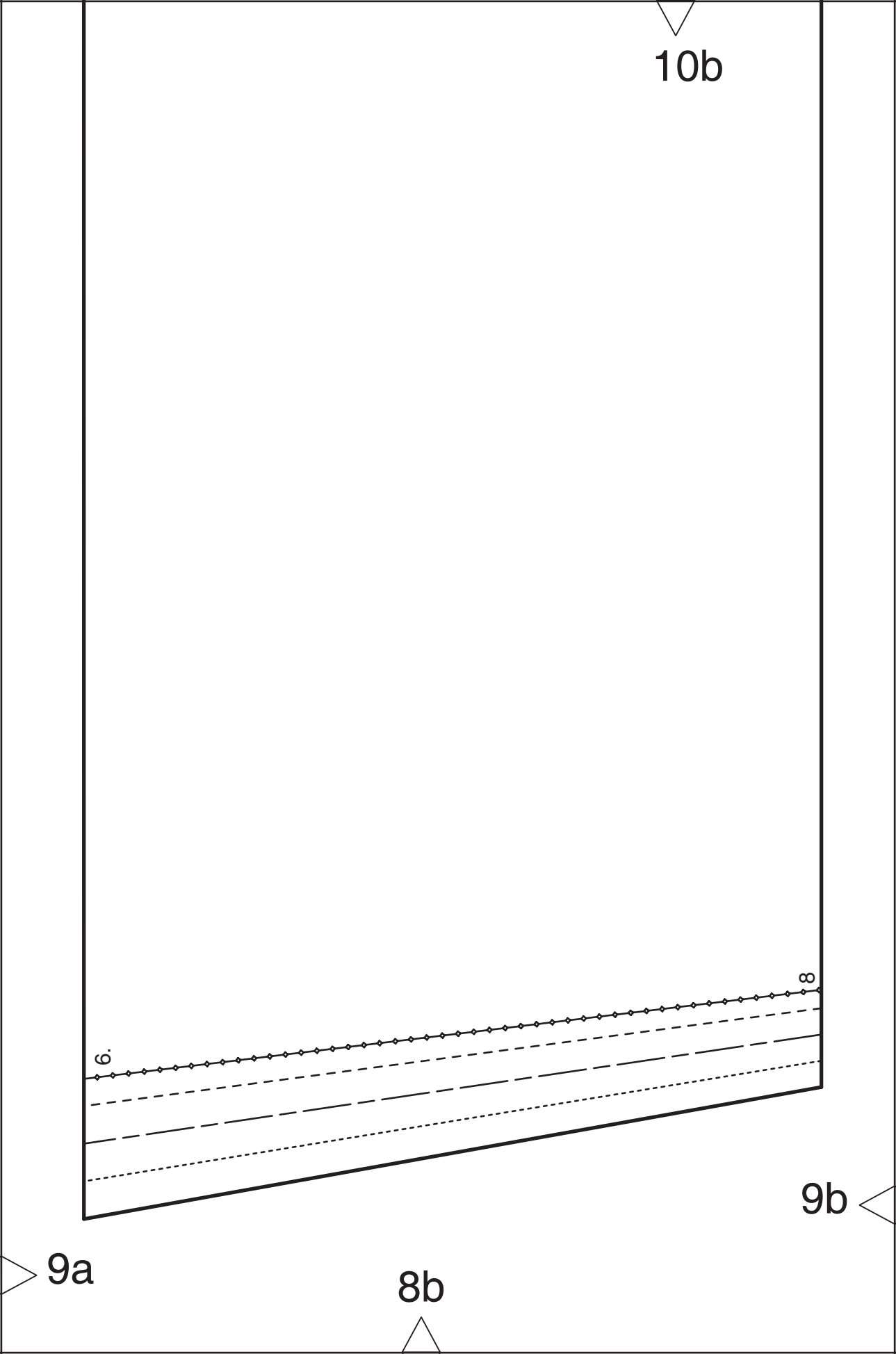
vordere Mitte Reißverschluss Fadenlauf
center front zipper straight grain
ЛИНИЯ СЕРЕДИНЫ ПЕРЕДА МОЛНИЯ ДОЛЕВАЯ НИТЬ

rückwärtige Mitte Stoffbruch Fadenlauf
center back fold straight grain
ЗАДНЯЯ СЕРЕДИНА СГИБ ДОЛЕВАЯ НИТЬ

8a

9a

10a



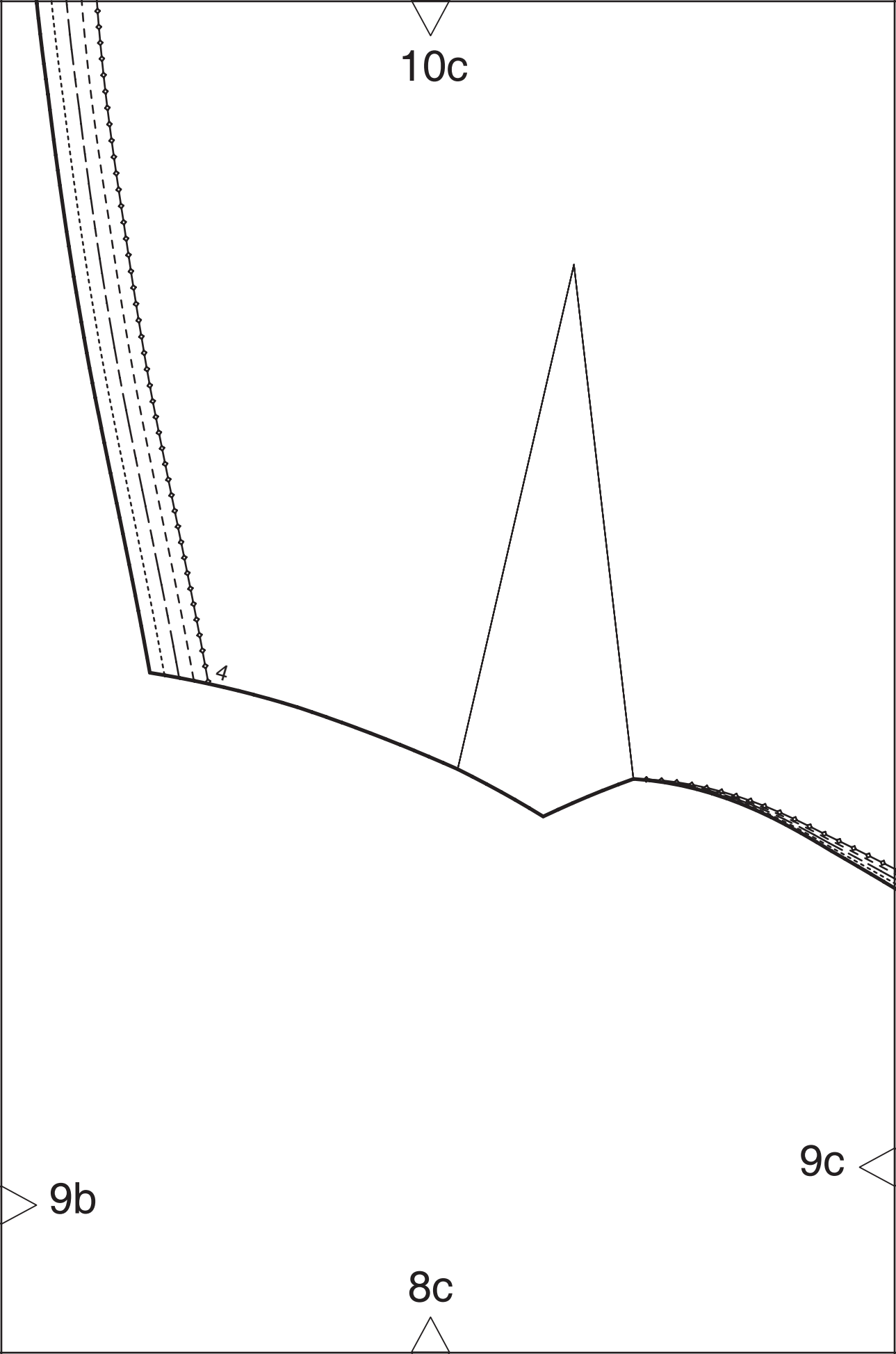
10c

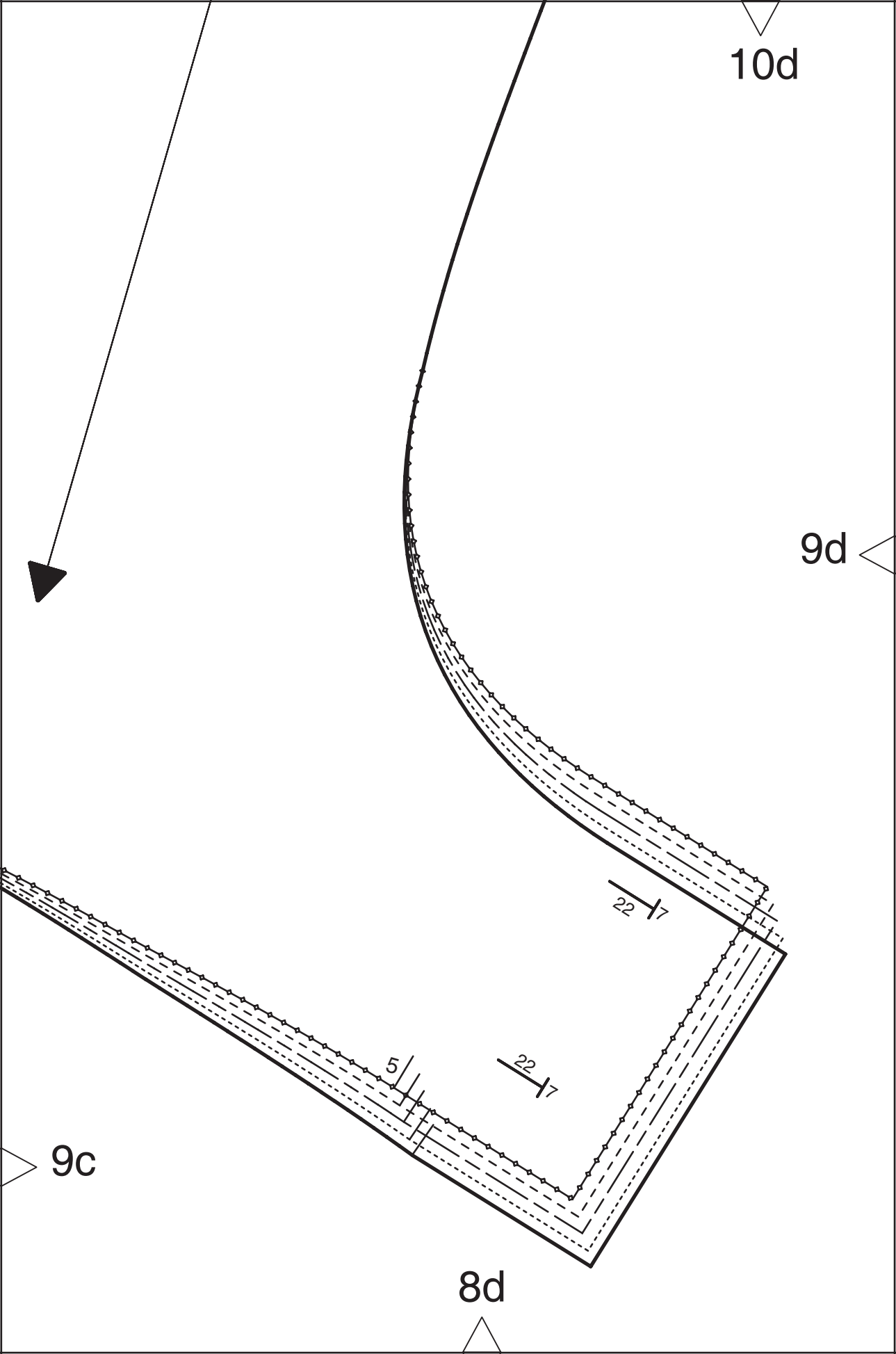
4

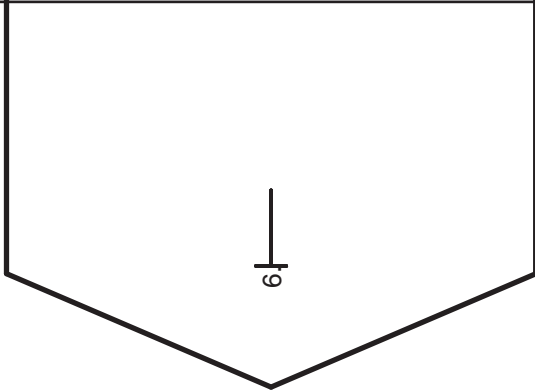
9b

9c

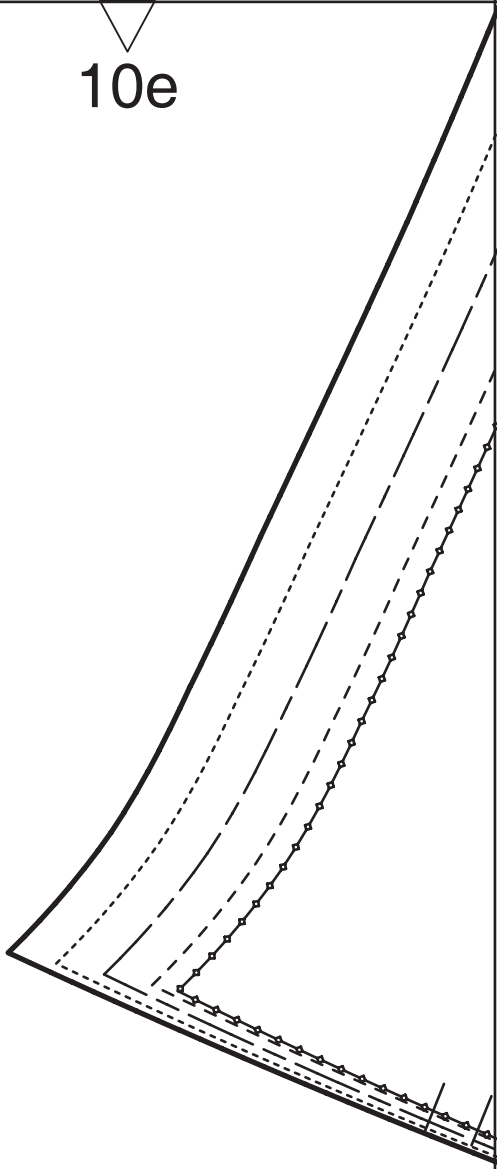
8c



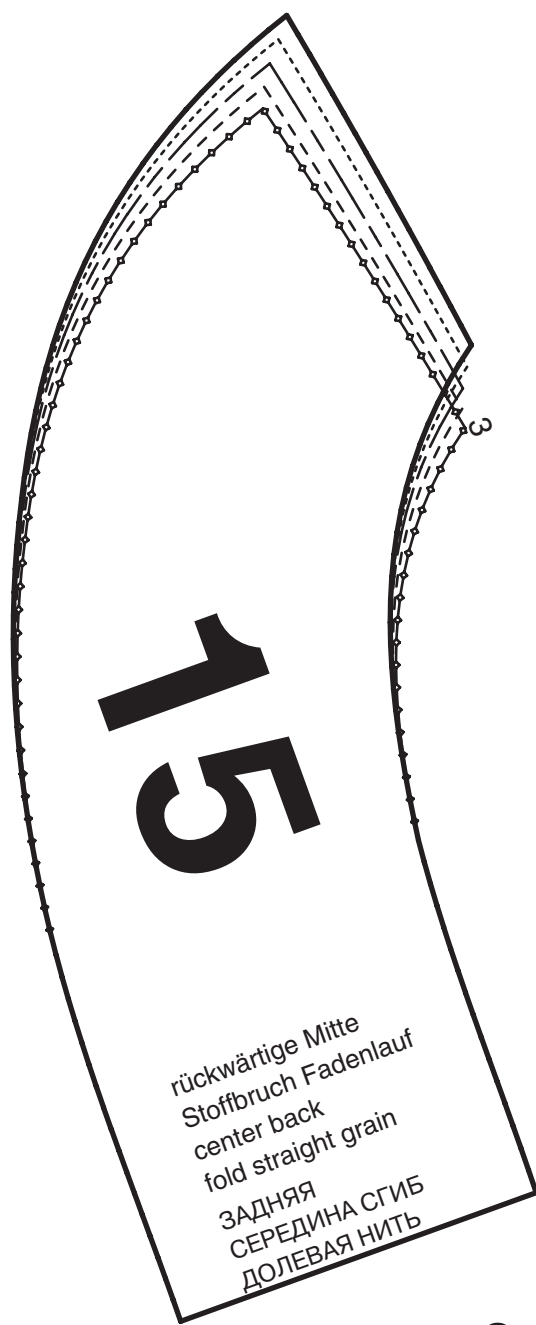




10e



9d



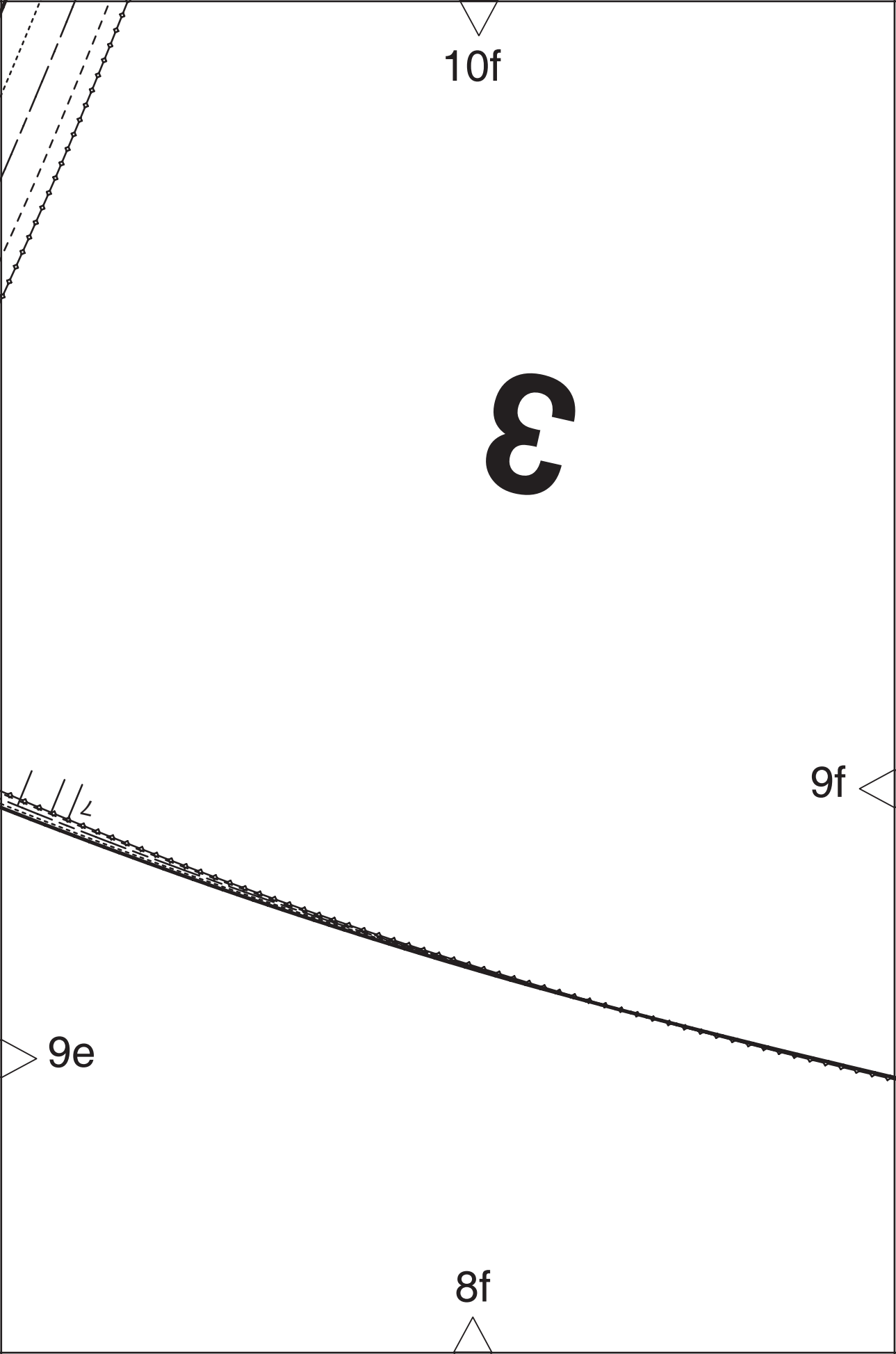
15

rückwärtige Mitte
Stoffbruch Fadenlauf
center back
fold straight grain
ЗАДНЯЯ
СЕРЕДИНА СГИБ
ДОЛЕВАЯ НИТЬ

9e

8e





10g

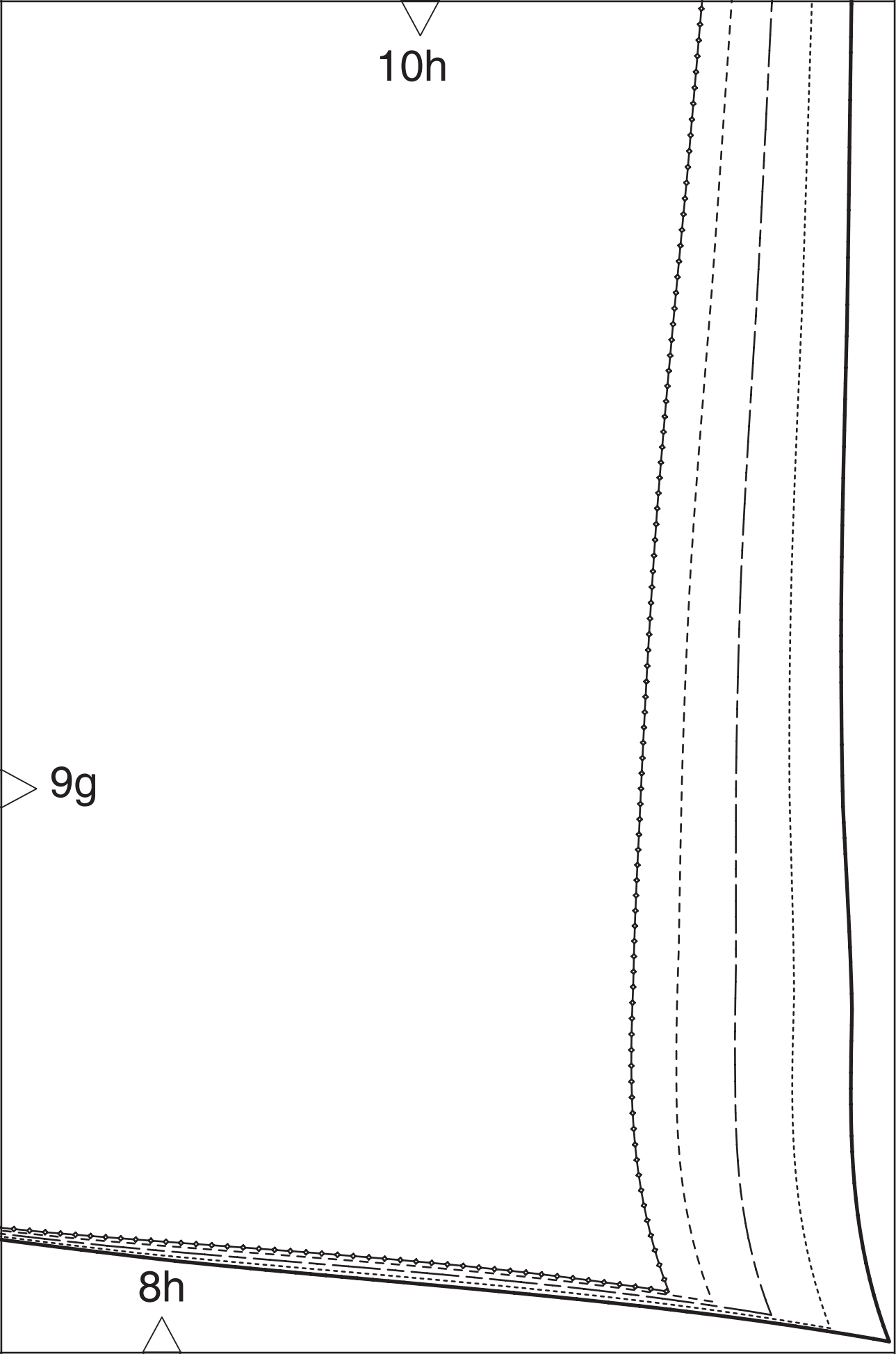
Fadenlauf
straight grain
ДОЛГОВАЯ НИТЬ

9f

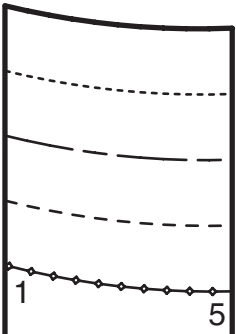
9g

52
44

8g



11a



4

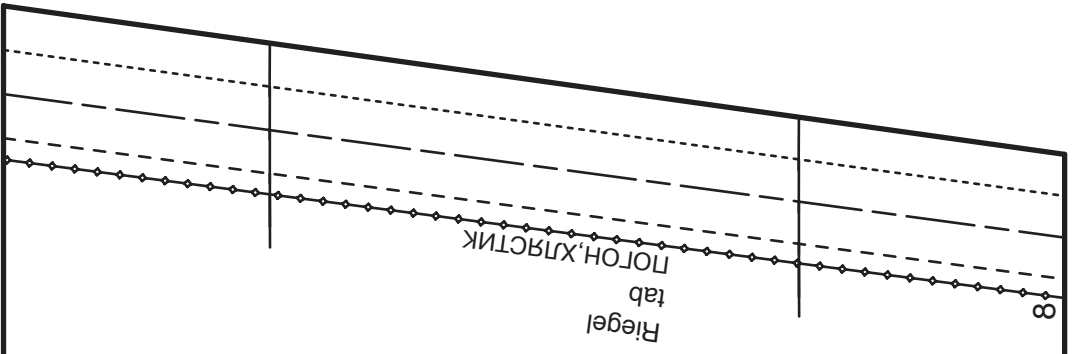
8

10a



11a

11b



5

Fadenlauf
 straight grain
 ДОЛБЕВАЯ НИТЬ

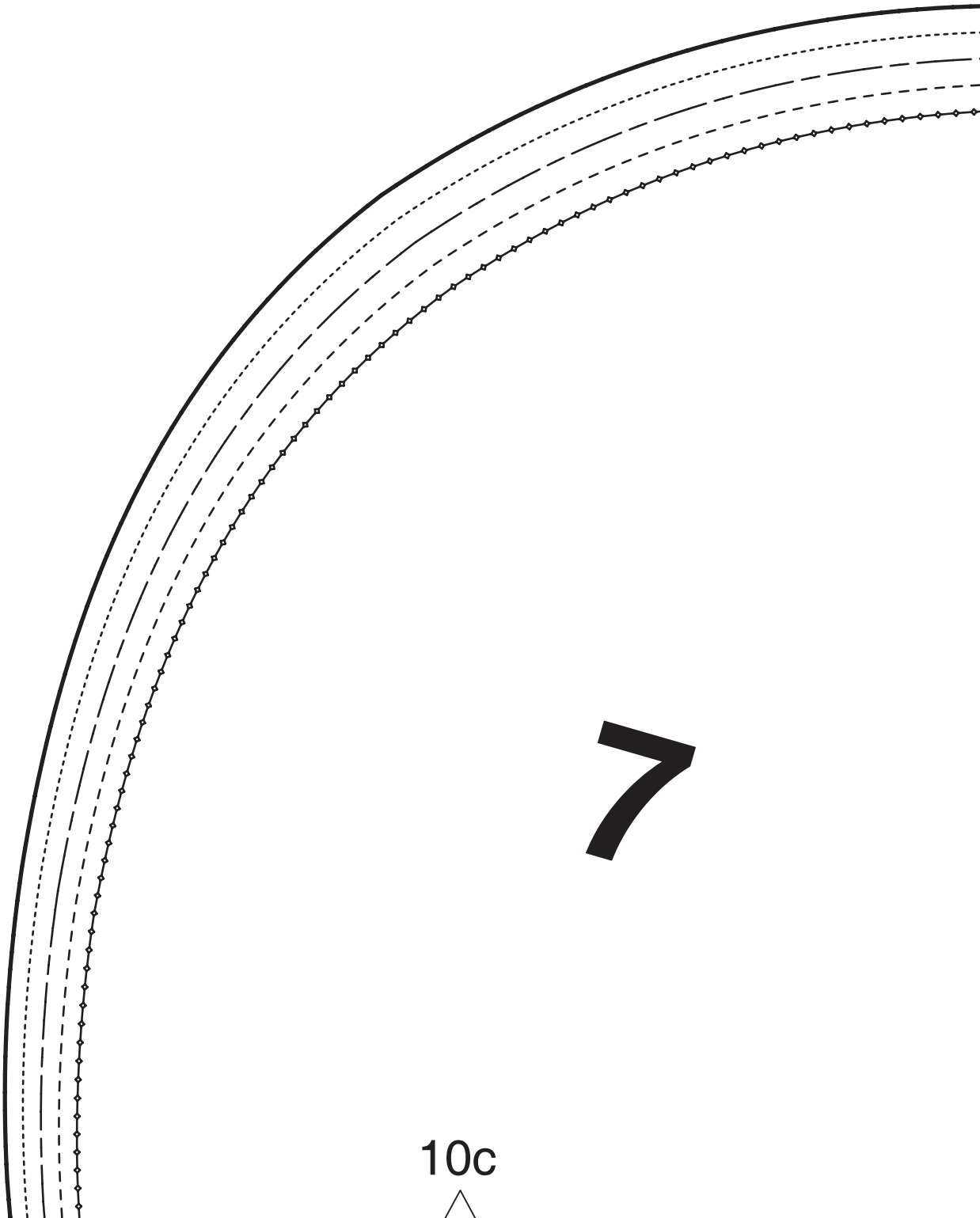


10b



11b

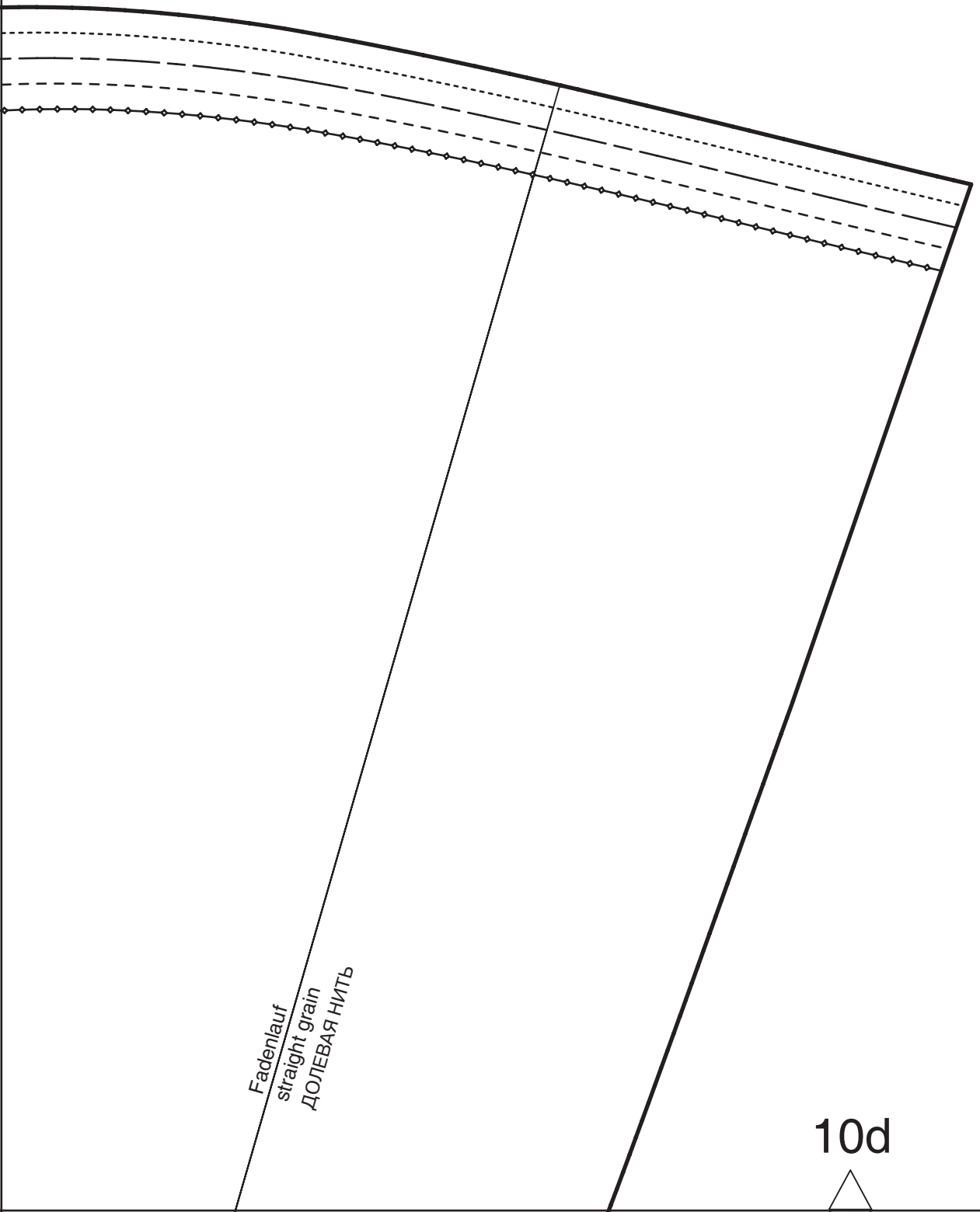
11c



10c

11c

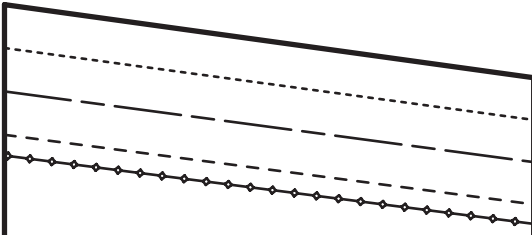
11d



Fadenlauf
straight grain
ДОЛЕВАЯ НИТЬ

10d

11d

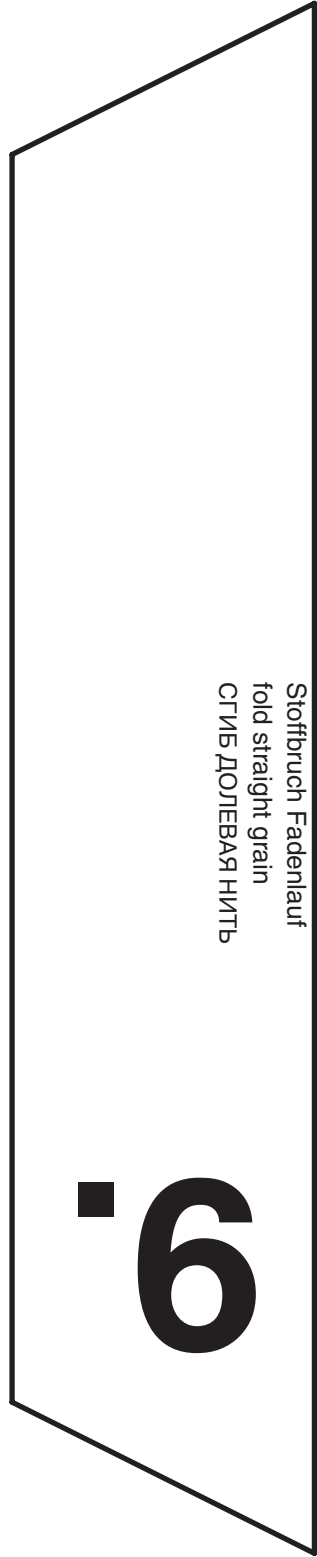


Fadenlauf
straight grain
ДОЛБВАЯ НИТЬ

oben
top
ВВЕРХУ

6.

11e



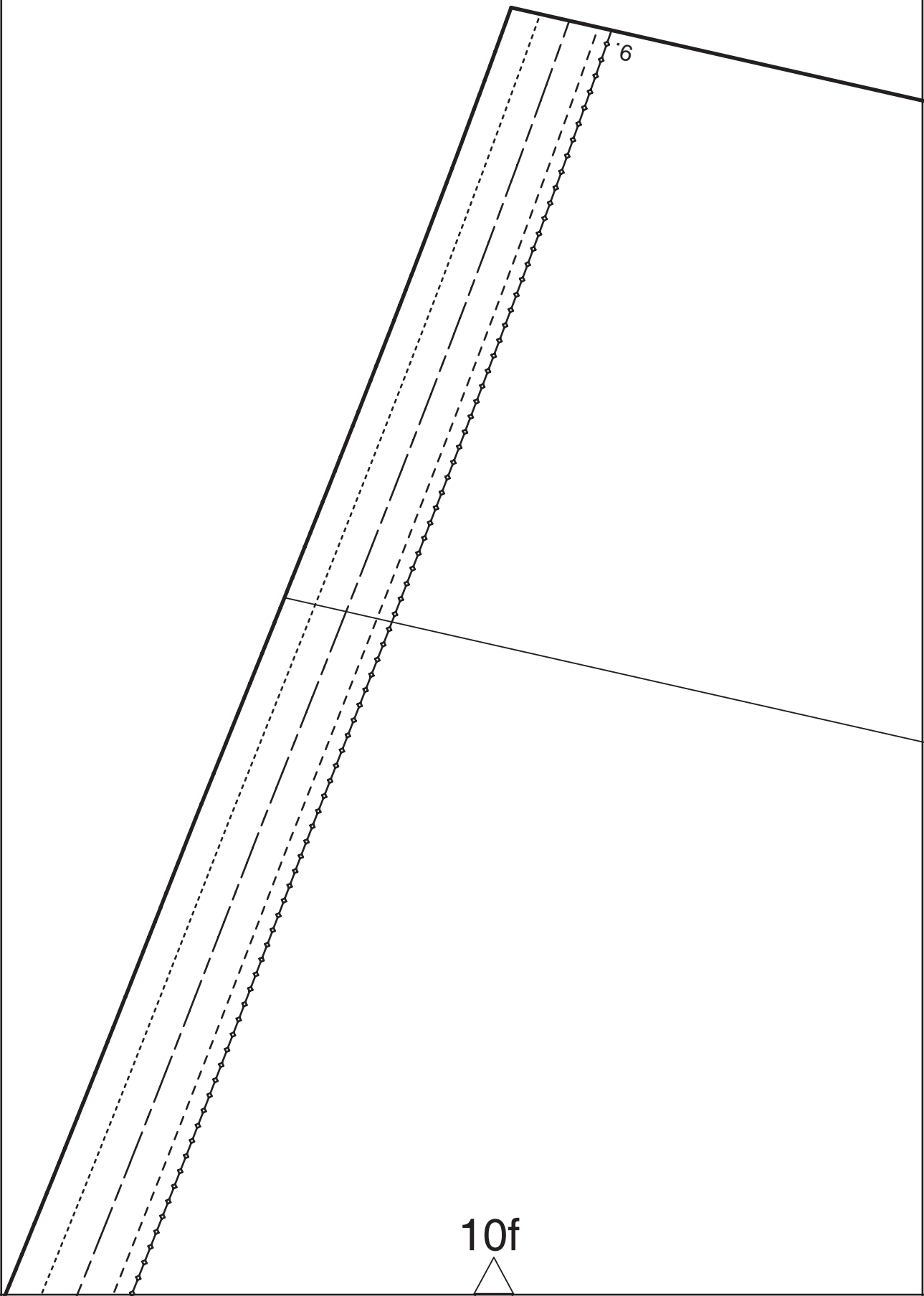
Stoffbruch Fadenlauf
fold straight grain
СГИБ ДОЛБВАЯ НИТЬ

10e

6.

11e

11f

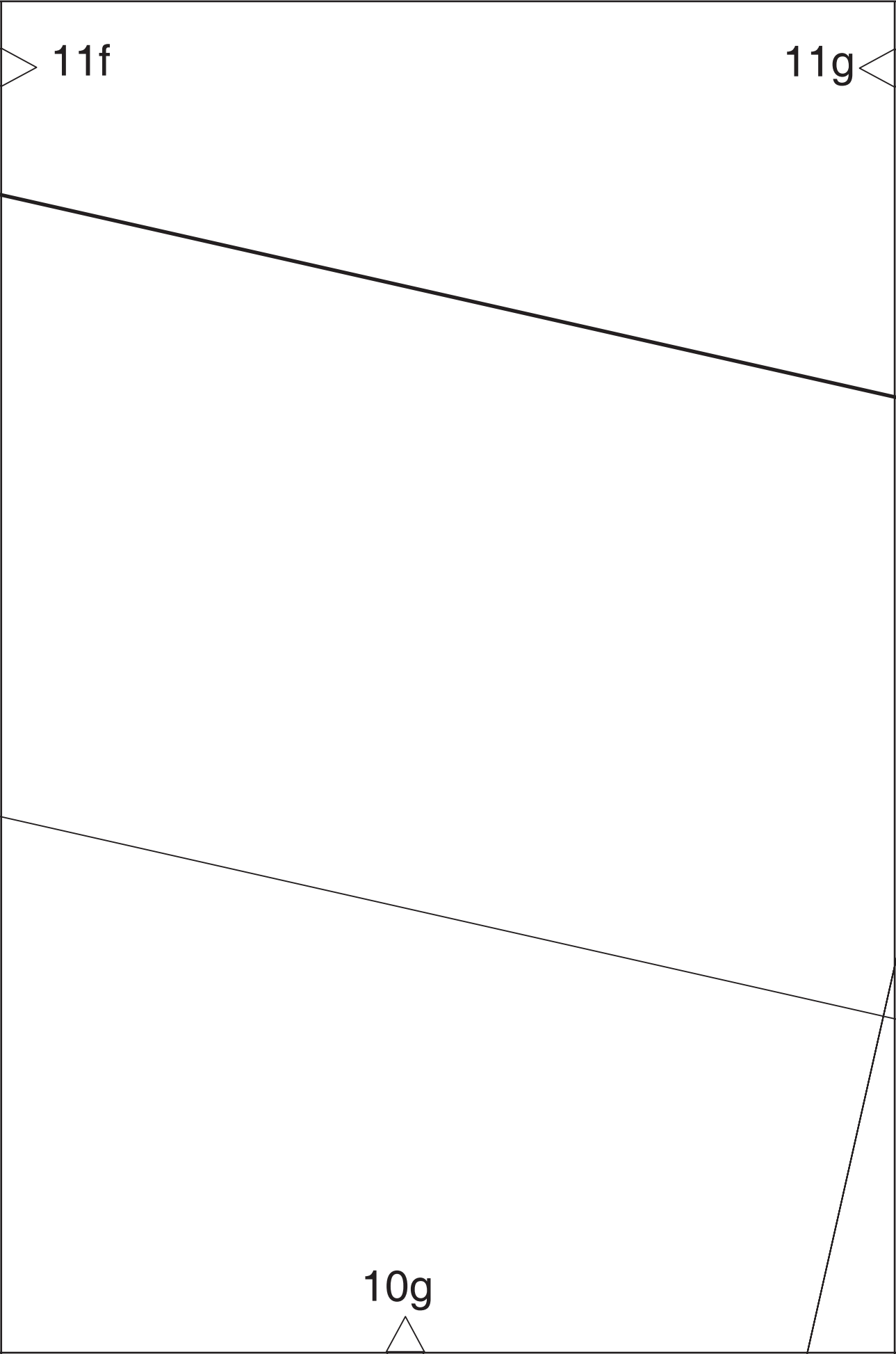


10f

11f

11g

10g



11g

Mod.415

9.



Mod.414

6.

10h

