



FINISHED SIZE: 20" WIDTH X 15 1/2" HEIGHT X 6" DEPTH
6 1/2" STRAP HEIGHT

The Martha Market Bag is designed as a market or grocery bag; with its extra-secure handles and large volume, it is the perfect bag to carry many heavy items in. In order to keep your keys, points card, and wallet separated and easy-to-find, you may add a zipper pocket to the inner side of the bag in which to carry these small items in. However, no one will ever guess that this bag's original purpose is for doing groceries. The bag is so pretty that it may be used on other occasions as well. The clean design of The Martha Market Bag allows it to easily match both a wide variety of fabrics as well as a wide range of outfits. Who says grocery shopping has to be a homely task? Shop in style with The Martha Bag. Designer's Review

The Martha Market Bag



THE MARTHA MARKET BAG

FINISHED SIZE: 18" WIDTH X 12 ½" HEIGHT

11" STRAP HEIGHT X 3" DEPTH

MATERIAL LIST

FABRIC

44" wide heavyweight home decorator OR quilting weight cotton
 (1/2) Yard for exterior fabric
 (1/4) Yard for exterior solid fabric
 (1) Yard for lining

INTERFACING (Optional)

(2) Yards of 22" wide medium weight fusible interfacing

OTHERS

(1) 18mm Magnetic snap (Optional)
 (1) Spool of coordinating thread
 78" (2m) Webbing

TOOL LIST

Ruler, Scissors, Chalk pencil, Pencil, Sewing machine, Pins, Needle, Shape tool

* Seam allowance 1/2" unless otherwise specified.

* All units are in inches.

Cut out the Fabric

Draw the measurements directly onto the wrong side of a single layer of fabric. Cut out the exterior and lining. If you would like to add an interfacing, draw and cut out the interfacing. Fuse the interfacing on the wrong side of the lining front and back pieces following the manufacturer's guide.

EXTERIOR

(2) 21" width x 12" height for Front and Back Upper Pieces
 (2) 21" width x 9" height for Front and Back Bottom Pieces

OTHER

(2) 39" (1m) Handles

INTERIOR

(2) 21" width x 20" height for Lining Front and Back Pieces

INTERFACING (Optional)

(2) 21" width x 20" height for Front and Back Pieces

Apply the magnetic snap (Optional)

Mark the placement location of the magnetic snap 1 ½" down from the lining's top center. Attach the magnetic snap onto the right side of the front and back lining pieces following the manufacturer's guide. Iron the interfacing onto the marked spot shown on the pattern. Center the snap onto the interfacing. Use a pencil to draw a line where the fabric will be cut. Cut the line. Insert the prongs of one of the magnetic snaps into the right side of the lining. Secure the thin prongs on the wrong side of the lining. Attach the other magnetic snap on the remaining lining.

Sew the Handles

Place the handles on the exterior front upper piece as indicated in **Illustration 1** and **see Picture 1**. Pin along the sides of the handles. Sew the sides and top, $1\frac{1}{2}$ " from the top of the front piece, pivoting at the corners, **see Picture 2**. Backstitch across the start and end points several times for reinforcement. Repeat for the exterior back upper piece.

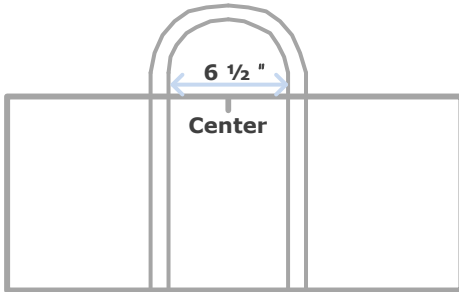


Illustration 1



Picture 1



Picture 2



Picture 3

Place the exterior front bottom piece on the upper piece with right sides together. The attached handle should be between the two pieces. Pin and sew along the bottom seam, backstitching on both ends, **see Picture 3**. Flip the exterior bottom piece down; press and topstitch $\frac{1}{8}$ " away from the seam, **see Picture 4**. Repeat for the exterior back.

Fold a sewing label in half widthwise, and pin and baste it, away from the seam, onto the exterior front piece, **see Picture 5**.



Picture 4



Picture 5

Sew the Exterior and Lining

Place the exterior front and back pieces with right sides together. Pin and sew the exterior along the sides and bottom, backstitching on both ends, *see Illustration 2*. Sew the lining in the same manner, leaving a 5" gap for turning, *see Illustration 3*.

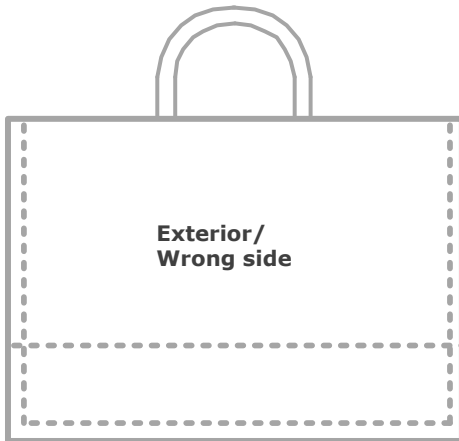


Illustration 2

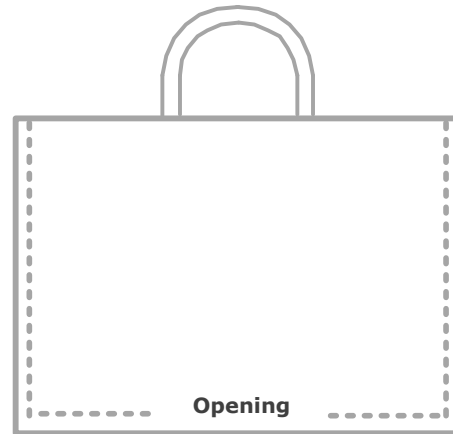


Illustration 3

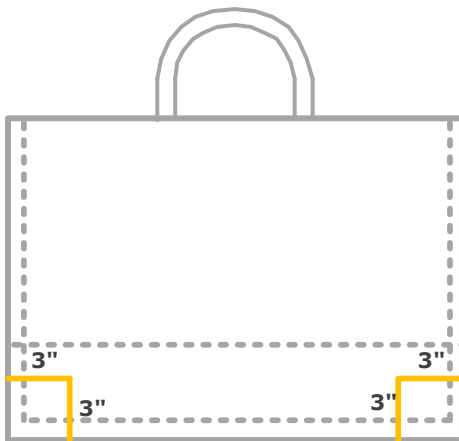


Illustration 4

Make the Corners

Draw a 3" x 3" square on each bottom corner of the exterior fabric's wrong side, *see Illustration 4*. Flip the fabric onto its side and pinch each bottom corner so that the corner seams form a triangle and the 3" marks form a straight line. Repeat this process for the lining.

Pin and sew following the line, *see Picture 6*. Trim the corner seams, *see Picture 7*.



Picture 6



Picture 7

Assemble the Exterior and Lining

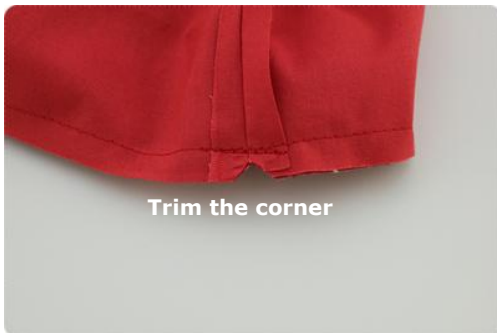
Press the exterior and lining seam open. Turn the exterior right side out, and tuck it into the lining with right sides together, *see Picture 8*. Sew around the top opening of the bag, backstitching on both ends, *see Picture 9*. Trim the corner seams in a "V" shape, *see Picture 10*. Turn the bag right side out through the opening and sew it closed, *see Picture 11*. Press and topstitch around the top opening of the bag, *see Picture 12*.



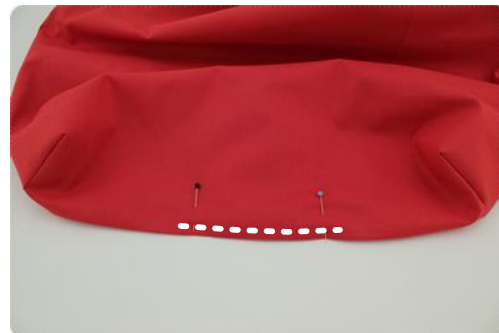
Picture 8



Picture 9



Picture 10



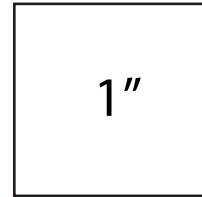
Picture 11



Picture 12

© 2009 Copyright of ithinksew.com

Only if you follow these conditions will I allow you to sell the finished products. *Give full credit to ithinksew.com for the patterns (this applies online and offline) For example, when you're selling one of my products online include a sentence like this: "This pattern was designed by ithinksew.com". A link to my shop would also be really appreciated. When selling the products offline, write this on the tag. * The finished products may only be made by crafters. It may not be mass produced. * The conditions above may change



** When printing this pattern, please print it without any margins at actual size.

** After printing the pattern and taping the pieces together, please follow the reference the provided size guide (3" or 5").

** Patterns marked as A4 are for users who utilize the A4 standard paper size.

** If you experience that certain parts of the pattern are not printing, you should be able to ignore those near the edge/border. These are usually just guides & signs.