



LW6382



crochet

Designed by Marianne Forrester

What you will need:

RED HEART® Classic™: 12 skeins 645 Honey Gold

Susan Bates® Crochet Hook: 5.5mm [US I-9]

5 x 8" [12.5 x 20.5 cm] piece of heavy cardboard (for making tassels), yarn needle

GAUGE: 10 sts = 3¼" [8.5 cm]; 9 rows = 6½" [16.5 cm] in pattern. CHECK YOUR GAUGE. Use any size hook to obtain the gauge.

BUY YARN



RED HEART® Classic™, Art. E267 available in solid color 3.5 oz (100 g), 190 yd (174 m), prints & multicolor 3 oz (85 g), 146 yd(134 m) skeins



Golden Waves Throw

You'll love the cushy coziness of this one-color throw! The interesting stitch pattern is amazingly reversible, looking the same on both sides. Choose any shade of yarn for your perfect pop of color.

Throw measures about 45 x 56" [114.5 x 142 cm], including border

Notes

- 1. Throw is worked back and forth in rows.
2. A border is worked in rounds around the entire outer edge of throw.
3. To make a wider throw, add 10 more chains to the beginning chain for each additional column of "waves" desired. Each set of 10 chains added will add about 3¼" [8.5 cm] to the width. Similarly, to make a narrower throw, subtract 10 chains from the beginning chain. Making a larger throw may require more yarn.

Special Stitches

2/2 tr-LC (2 over 2 treble crochet left leaning cross) = Skip next 2 stitches, tr in each of next 2 stitches; working in front of the tr stitches just made, tr in each of the 2 skipped stitches.

2/2 tr-RC (2 over 2 treble crochet right leaning cross) = Skip next 2 stitches, tr in each of next 2 stitches; working behind the tr stitches just made, tr in each of the 2 skipped stitches.

THROW

Ch 133.

Row 1: Sc in 2nd ch from hook and in each remaining ch across—132 sc.

Row 2: Ch 3 (counts as first dc here and throughout), turn, skip first sc, dc in next sc, * 2/2 tr-LC, 2/2 tr-RC, dc in next 2 sts; repeat from * across—26 crosses (13 groups of 2 crosses each, separated by 2 dc).

Row 3: Ch 3, turn, skip first dc, dc in next dc, * 2/2 tr-LC, 2/2 tr-RC, dc in next 2 sts; repeat from * across working the last dc in top of beginning ch-3. Repeat Row 3 until piece measures about 54" [137 cm] from beginning, or about 2" [5 cm] less than desired length.

Last Row: Ch 1, turn, sc in each st across. Do not fasten off.

Border

Round 1: Ch 3, turn, 2 dc in first dc (first corner made), dc in each remaining st across to last st, 3 dc in last st (2nd corner made); working in ends of dc rows along side edge, skip end of sc row, work dc sts evenly spaced all the way along edge to next sc row (Note: Designer recommends working 2 dc in end of each dc row and 3 dc in end of about every 4th row), skip end of sc row; working along opposite side of foundation ch, work 3 dc in first ch (3rd corner made), dc in each ch to last ch, 3 dc in last ch (4th corner made); working in ends of dc rows along side edge, skip end of sc row, work dc sts evenly spaced all the way along edge to next sc row (Note: For best results, work the same number of dc as worked along first side edge), skip end of sc row; join with slip st in top of beginning ch-3.

Round 2: Ch 1, working in back loops only, sc in same st as joining slip st, 3 sc in next dc (first corner), sc in each st all the way around, working 3 sc in the center dc of each remaining 3-dc corner; join with slip st in first sc. Fasten off.

continued...



2015 - 2018 WOMEN'S CHOICE AWARD AMERICA'S MOST RECOMMENDED YARN BRAND



LW6382 Golden Waves Throw

FINISHING

Weave in ends.

Tassels (make 4)

Wrap yarn 35 times around 8" [20.5 cm] side of piece of heavy cardboard. Thread a yarn needle with a 12" [30.5 cm] length of yarn, slip length under all wraps at one end of cardboard and tie securely for top of tassel. Do not trim ends (they can be used later to attach tassel to throw). Cut wraps at opposite end of cardboard and remove cardboard. Wrap a 16" [40.5 cm] length of yarn twice around wraps, about 1" [2.5 cm] below top of tassel, for tassel neck. Tie securely and weave ends to middle of tassel to become part of the tassel. Trim ends to even. Tie or sew one tassel to each corner of throw.

.....

ABBREVIATIONS

ch = chain; **dc** = double crochet; **sc** = single crochet; **st(s)** = stitch(es); **tr** = treble (triple) crochet; * = repeat whatever follows the * as indicated.

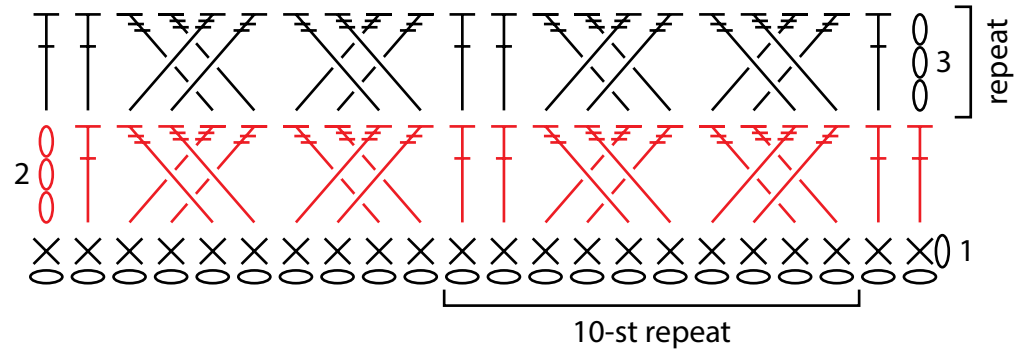
See next page for chart





LW6382 Golden Waves Throw

Last Row () X



KEY

	= chain (ch)		= 2 over 2 treble crochet left leaning cross (2/2 tr-LC)
	= single crochet (sc)		= 2 over 2 treble crochet right leaning cross (2/2 tr-RC)
	= double crochet (dc)		
	= treble (triple) crochet (tr)		