

Heaven and Earth Designs

The Pink Rose

Chart No: HAEJ002

By Michele Sayetta

Artwork by - Charles Lenoir



Finished Design Size 300 W by 49 1/4 H (12 W X 19 - 5/8 H inches on 25ct fabric)

Heaven and Earth Designs

425 9th Street SW

Willmar MN 56201

320-214-7998

www.heavenandearthdesigns.com

Copyright Heaven and Earth Designs 2004

Copyright - Charles Lenoir 2005

Instructions

The model for The Pink Rose is stitched over 1 on 25ct, Linen or Evenweave may be used. You may use 1 or 2 strands of floss depending on your preference.

It is recommended that you make working copies and enlarge to view detail and symbols.

We also suggest using a #28 needle when working over 1 on 25ct.



















This is a large project that will offer many hours of stitching pleasure.

We thank you for purchasing this design and welcome any questions or comments That you may have.

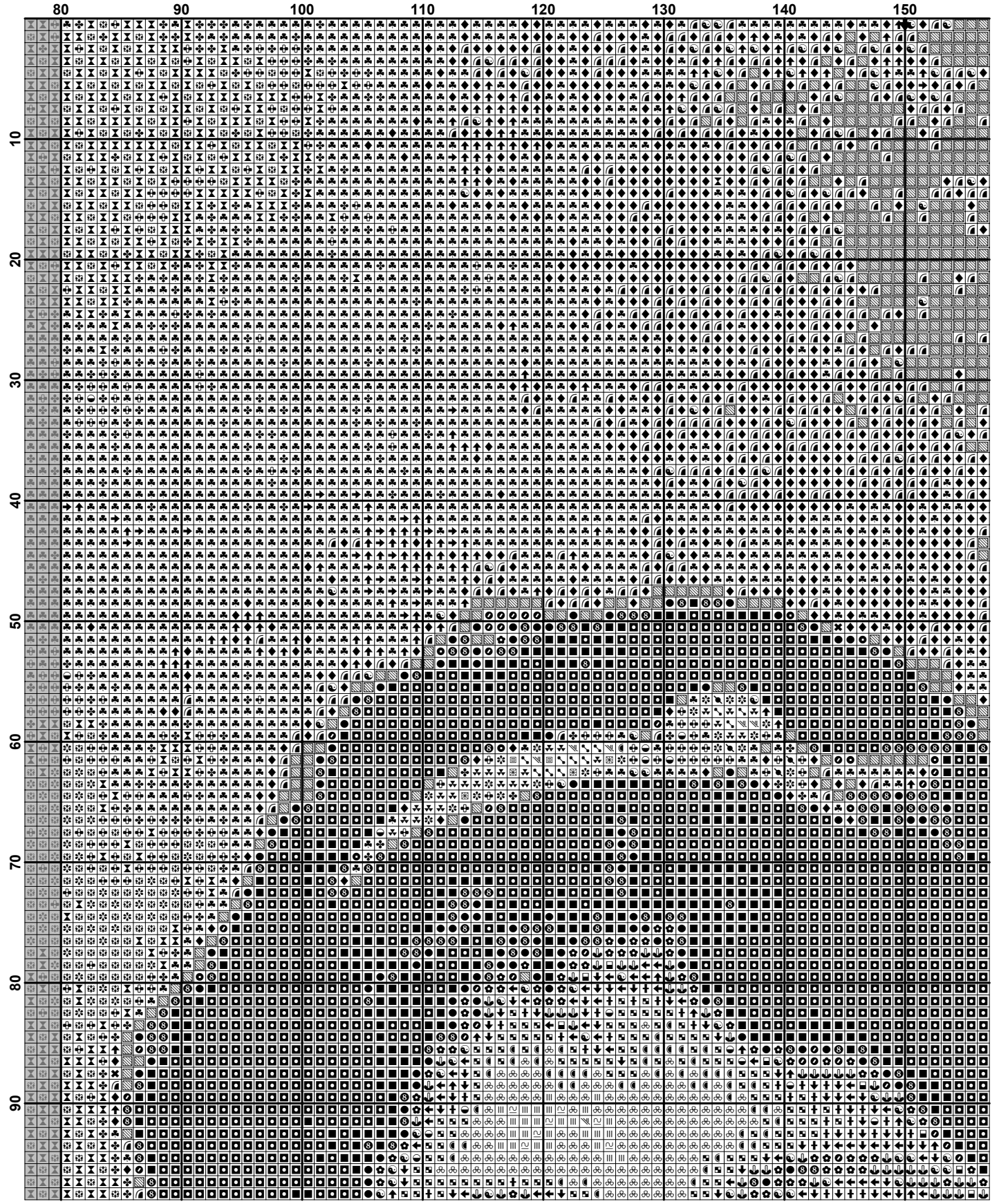
Pattern Name: The Pink Rose - Lenoir
Designed By: Michele Sayetta
Company: Heaven and Earth Designs
Copyright: 2005
Fabric: Linen or Evenweave 25, White
 300w X 491h Stitches
Size: 25 Count, 12w X 19-5/8h in

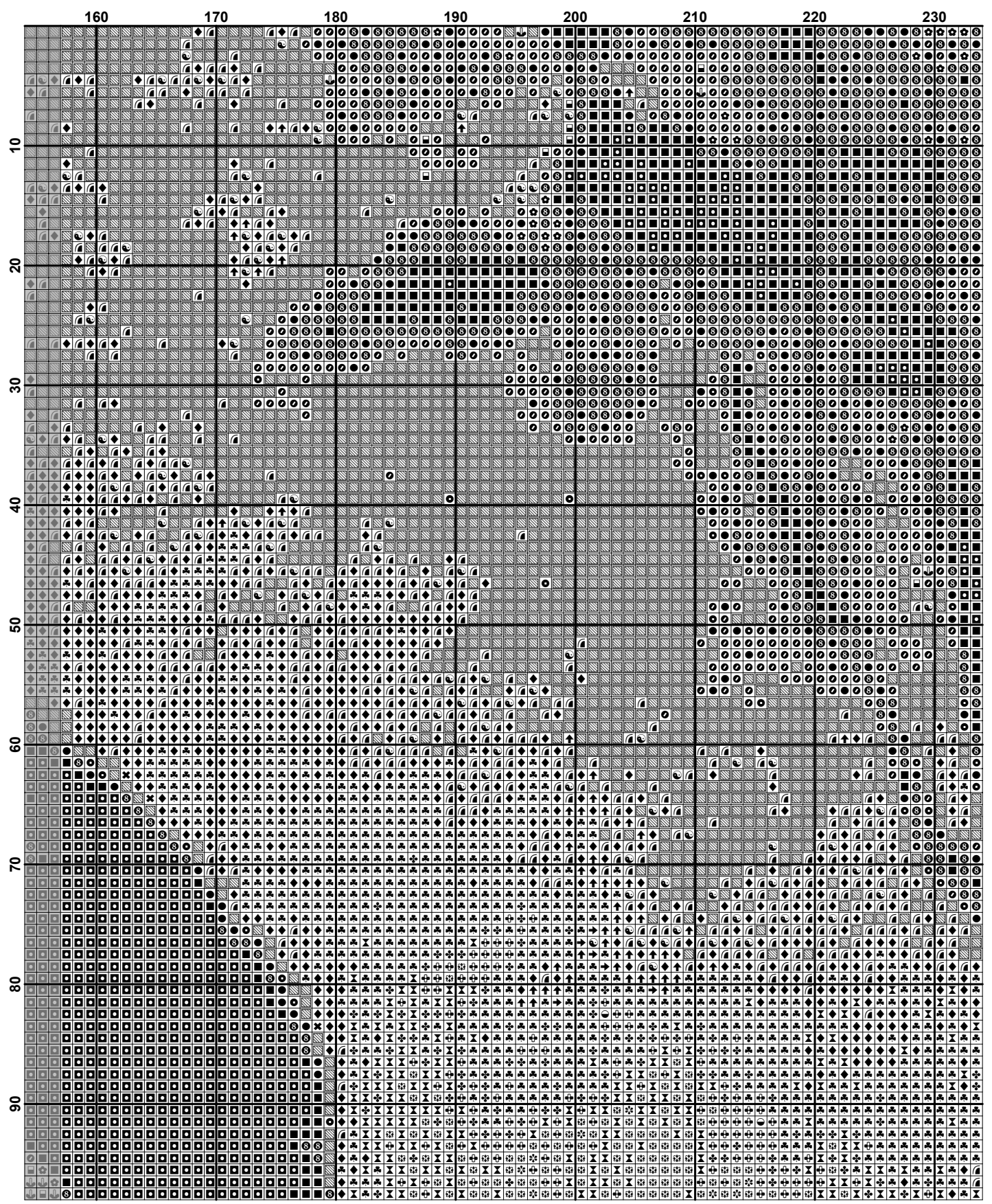
Floss Used for Full Stitches:

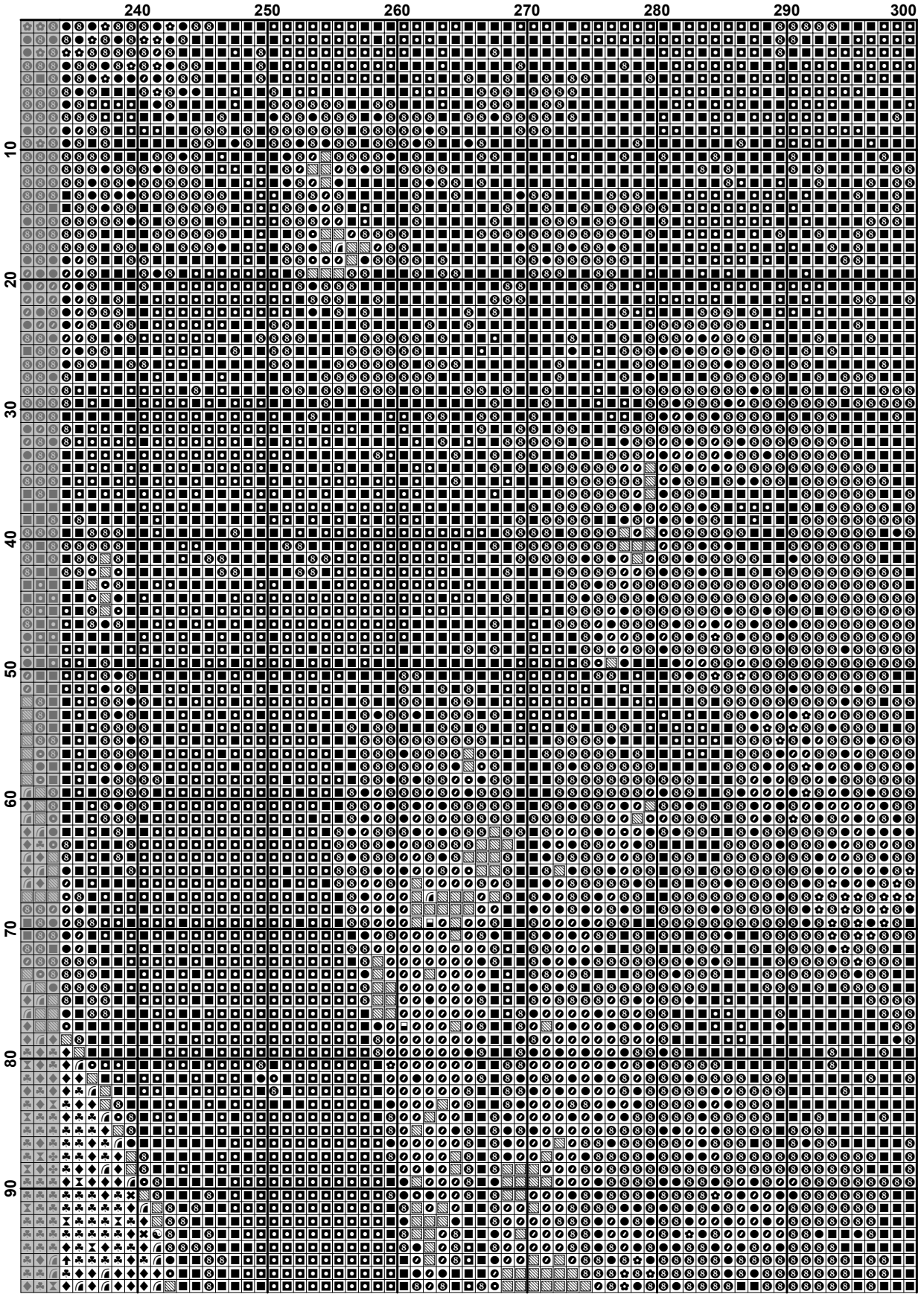
Symbol	Strands	Type	Number	Color
	2	DMC	152	Shell Pink-MD LT
	2	DMC	169	Pewter-LT
	2	DMC	224	Shell Pink-VY LT
	2	DMC	225	Shell Pink-UL VY LT
	2	DMC	300	Mahogany-VY DK
	2	DMC	310	Black
	2	DMC	318	Steel Gray-LT
	2	DMC	414	Steel Gray-DK
	2	DMC	451	Shell Gray-DK
	2	DMC	452	Shell Gray-MD
	2	DMC	453	Shell Gray-LT
	2	DMC	524	Fern Green-VY LT
	2	DMC	535	Ash Gray-VY LT
	2	DMC	611	Drab Brown
	2	DMC	632	Desert Sand-UL VY DK
	2	DMC	647	Beaver Gray-MD
	2	DMC	648	Beaver Gray-LT
	2	DMC	666	Christmas Red-BRT
	2	DMC	754	Peach-LT
	2	DMC	760	Salmon
	2	DMC	779	Cocoa-DK
	2	DMC	801	Coffee Brown-DK
	2	DMC	817	Coral Red-VY DK
	2	DMC	869	Hazelnut Brown-VY DK
	2	DMC	900	Burnt Orange-DK
	2	DMC	902	Garnet-VY DK
	2	DMC	938	Coffee Brown-UL DK
	2	DMC	951	Tawny-LT
	2	DMC	975	Golden Brown-DK
	2	DMC	3021	Brown Gray-VY DK
	2	DMC	3033	Mocha Brown-VY LT
	2	DMC	3041	Antique Violet-MD

Symbol	Strands	Type	Number	Color
	2	DMC	3064	Desert Sand
	2	DMC	3354	Dusty Rose-LT
	2	DMC	3371	Black Brown
	2	DMC	3740	Antique Violet-DK
	2	DMC	3743	Antique Violet-VYLT
	2	DMC	3770	Tawny-VYLT
	2	DMC	3771	Terra Cotta-ULVYLT
	2	DMC	3772	Desert Sand-VYDK
	2	DMC	3773	Desert Sand-MD
	2	DMC	3776	Mahogany-LT
	2	DMC	3787	Brown Gray-DK
	2	DMC	3830	Terra Cotta-MD
	2	DMC	3856	Mahogany-ULVYLT
	2	DMC	3860	Cocoa
	2	DMC	3861	Cocoa-LT
	2	DMC	3862	Mocha Beige-DK
	2	DMC	3863	Mocha Beige-MD
	2	DMC	White	White

	10	20	30	40	50	60	70	80
10
20
30
40
50
60
70
80
90

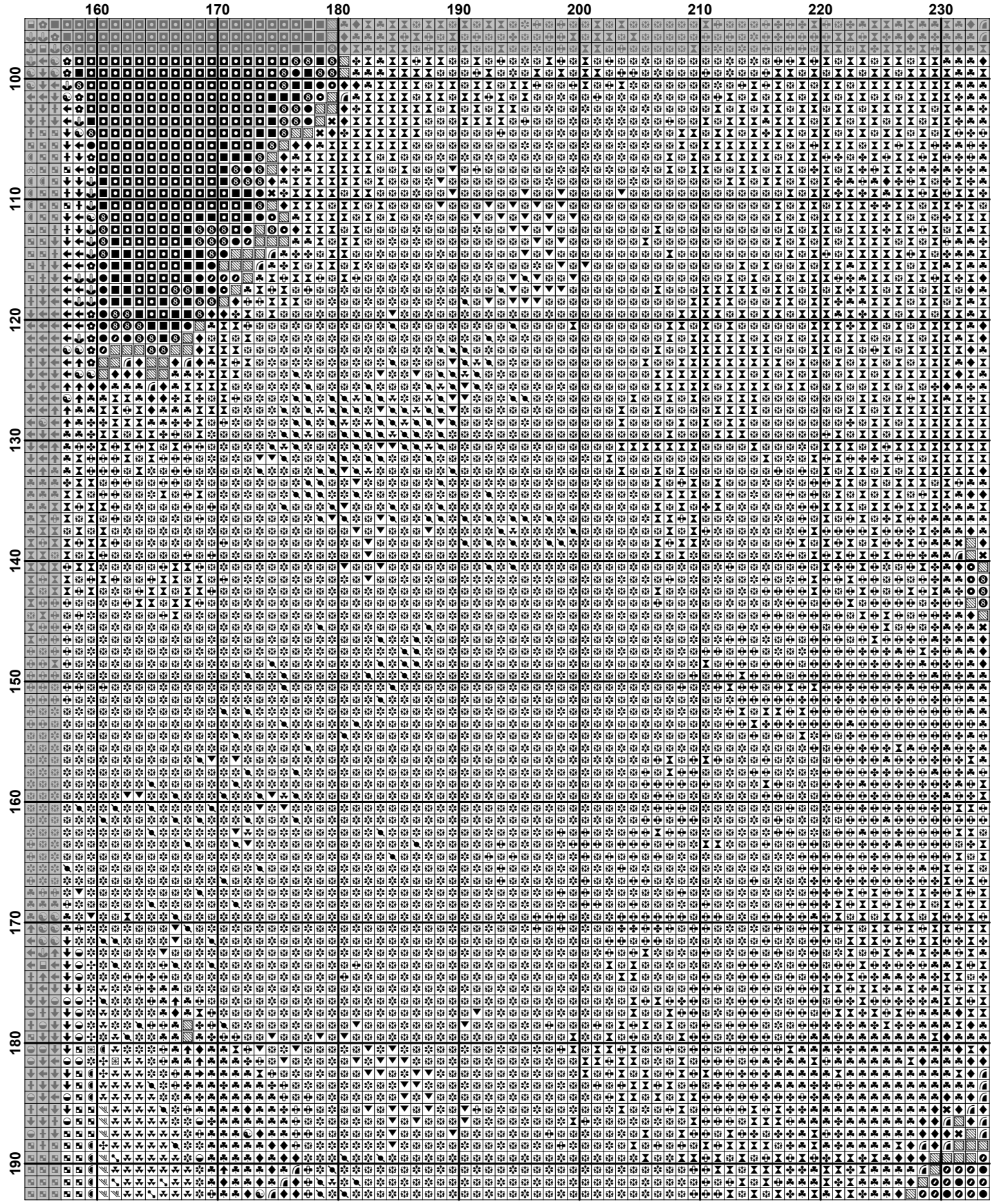


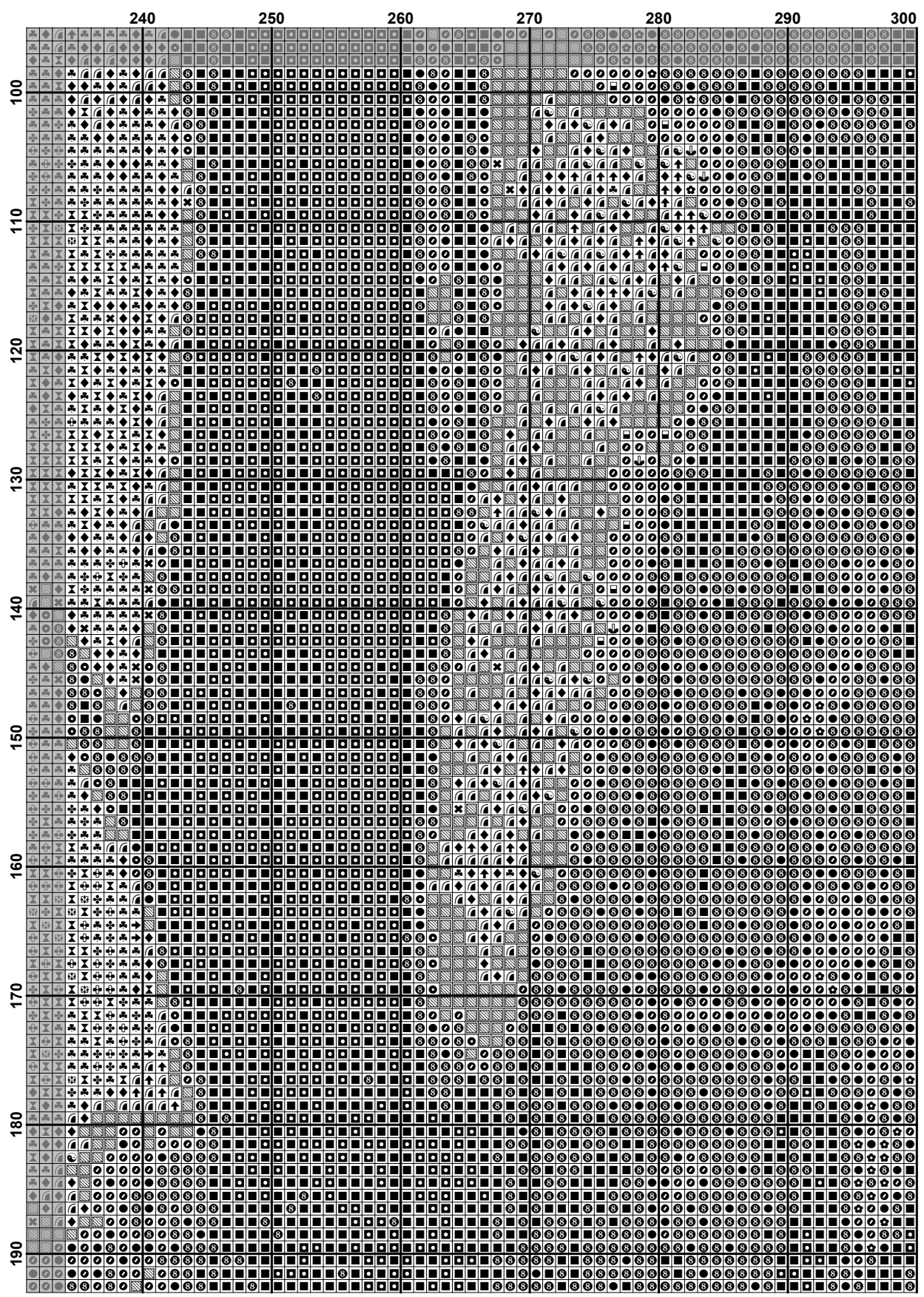




	10	20	30	40	50	60	70	80
100	X	X	X	X	X	X	X	X
101	X	X	X	X	X	X	X	X
102	X	X	X	X	X	X	X	X
103	X	X	X	X	X	X	X	X
104	X	X	X	X	X	X	X	X
105	X	X	X	X	X	X	X	X
106	X	X	X	X	X	X	X	X
107	X	X	X	X	X	X	X	X
108	X	X	X	X	X	X	X	X
109	X	X	X	X	X	X	X	X
110	X	X	X	X	X	X	X	X
111	X	X	X	X	X	X	X	X
112	X	X	X	X	X	X	X	X
113	X	X	X	X	X	X	X	X
114	X	X	X	X	X	X	X	X
115	X	X	X	X	X	X	X	X
116	X	X	X	X	X	X	X	X
117	X	X	X	X	X	X	X	X
118	X	X	X	X	X	X	X	X
119	X	X	X	X	X	X	X	X
120	X	X	X	X	X	X	X	X
121	X	X	X	X	X	X	X	X
122	X	X	X	X	X	X	X	X
123	X	X	X	X	X	X	X	X
124	X	X	X	X	X	X	X	X
125	X	X	X	X	X	X	X	X
126	X	X	X	X	X	X	X	X
127	X	X	X	X	X	X	X	X
128	X	X	X	X	X	X	X	X
129	X	X	X	X	X	X	X	X
130	X	X	X	X	X	X	X	X
131	X	X	X	X	X	X	X	X
132	X	X	X	X	X	X	X	X
133	X	X	X	X	X	X	X	X
134	X	X	X	X	X	X	X	X
135	X	X	X	X	X	X	X	X
136	X	X	X	X	X	X	X	X
137	X	X	X	X	X	X	X	X
138	X	X	X	X	X	X	X	X
139	X	X	X	X	X	X	X	X
140	X	X	X	X	X	X	X	X
141	X	X	X	X	X	X	X	X
142	X	X	X	X	X	X	X	X
143	X	X	X	X	X	X	X	X
144	X	X	X	X	X	X	X	X
145	X	X	X	X	X	X	X	X
146	X	X	X	X	X	X	X	X
147	X	X	X	X	X	X	X	X
148	X	X	X	X	X	X	X	X
149	X	X	X	X	X	X	X	X
150	X	X	X	X	X	X	X	X
151	X	X	X	X	X	X	X	X
152	X	X	X	X	X	X	X	X
153	X	X	X	X	X	X	X	X
154	X	X	X	X	X	X	X	X
155	X	X	X	X	X	X	X	X
156	X	X	X	X	X	X	X	X
157	X	X	X	X	X	X	X	X
158	X	X	X	X	X	X	X	X
159	X	X	X	X	X	X	X	X
160	X	X	X	X	X	X	X	X
161	X	X	X	X	X	X	X	X
162	X	X	X	X	X	X	X	X
163	X	X	X	X	X	X	X	X
164	X	X	X	X	X	X	X	X
165	X	X	X	X	X	X	X	X
166	X	X	X	X	X	X	X	X
167	X	X	X	X	X	X	X	X
168	X	X	X	X	X	X	X	X
169	X	X	X	X	X	X	X	X
170	X	X	X	X	X	X	X	X
171	X	X	X	X	X	X	X	X
172	X	X	X	X	X	X	X	X
173	X	X	X	X	X	X	X	X
174	X	X	X	X	X	X	X	X
175	X	X	X	X	X	X	X	X
176	X	X	X	X	X	X	X	X
177	X	X	X	X	X	X	X	X
178	X	X	X	X	X	X	X	X
179	X	X	X	X	X	X	X	X
180	X	X	X	X	X	X	X	X
181	X	X	X	X	X	X	X	X
182	X	X	X	X	X	X	X	X
183	X	X	X	X	X	X	X	X
184	X	X	X	X	X	X	X	X
185	X	X	X	X	X	X	X	X
186	X	X	X	X	X	X	X	X
187	X	X	X	X	X	X	X	X
188	X	X	X	X	X	X	X	X
189	X	X	X	X	X	X	X	X
190	X	X	X	X	X	X	X	X
191	X	X	X	X	X	X	X	X
192	X	X	X	X	X	X	X	X
193	X	X	X	X	X	X	X	X
194	X	X	X	X	X	X	X	X
195	X	X	X	X	X	X	X	X
196	X	X	X	X	X	X	X	X
197	X	X	X	X	X	X	X	X
198	X	X	X	X	X	X	X	X
199	X	X	X	X	X	X	X	X
200	X	X	X	X	X	X	X	X

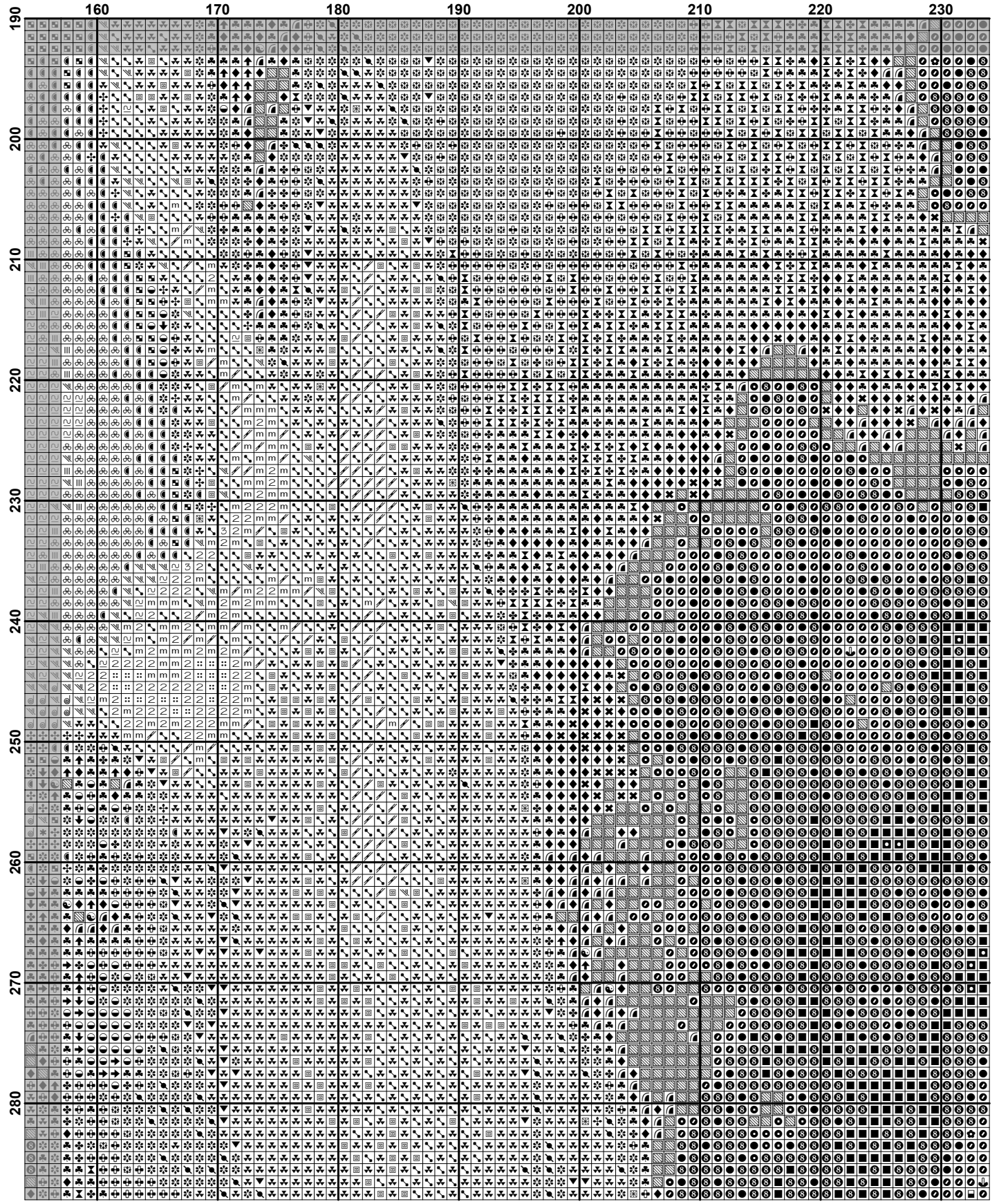
	80	90	100	110	120	130	140	150
100
110
120
130
140
150
160
170
180
190



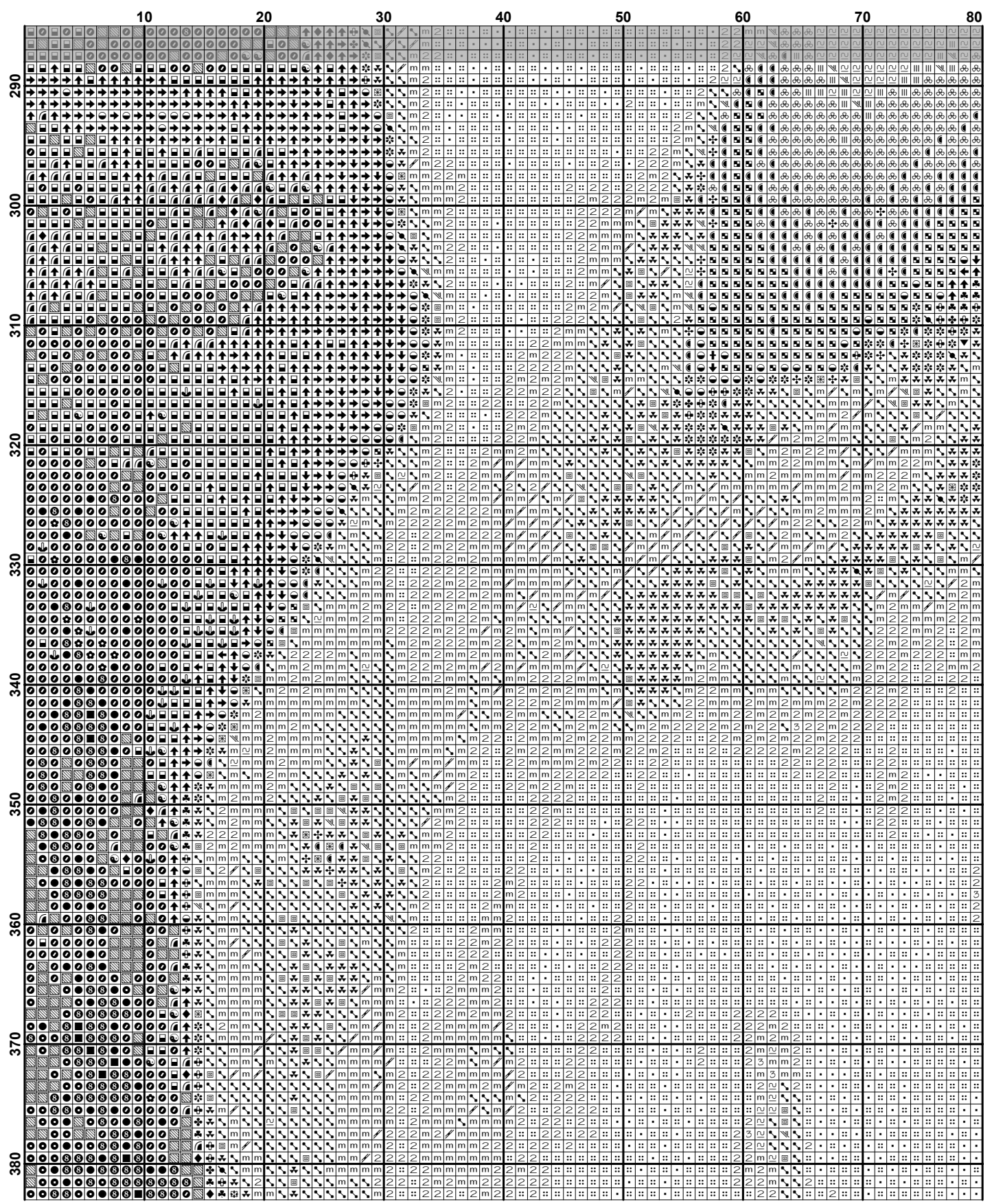


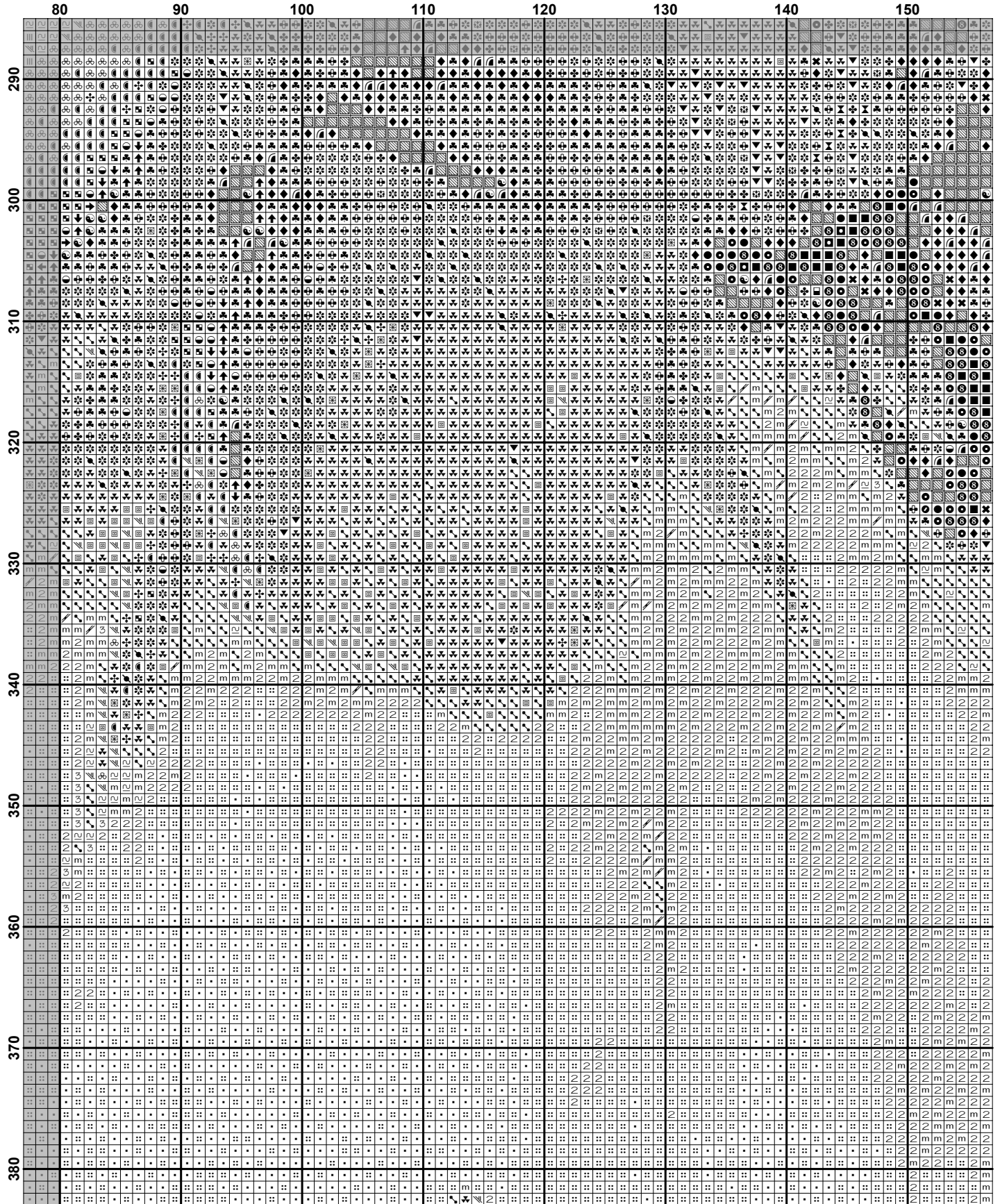
	10	20	30	40	50	60	70	80
190
200
210
220
230
240
250
260
270
280

190	80	90	100	110	120	130	140	150
200								
210								
220								
230								
240								
250								
260								
270								
280								

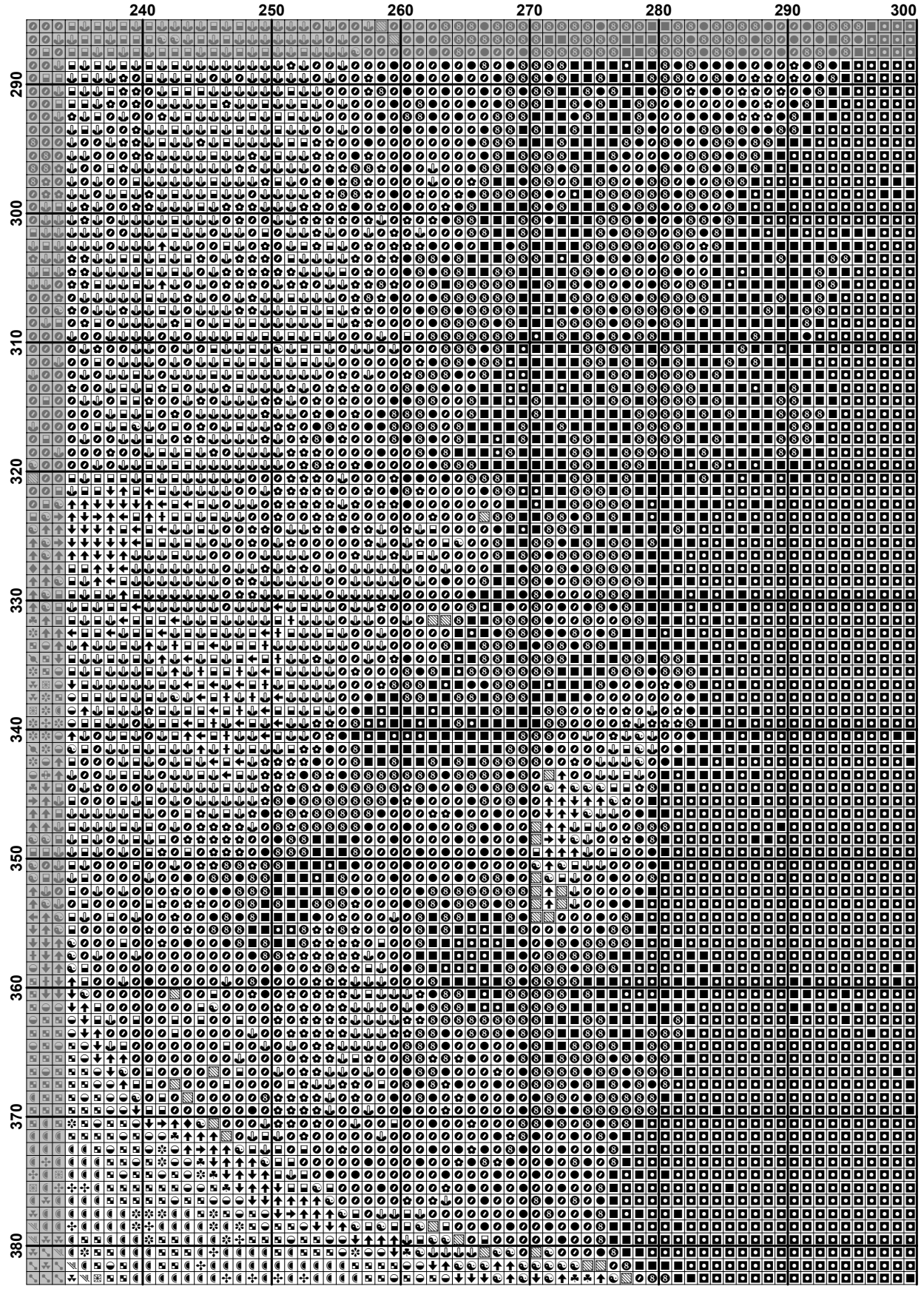


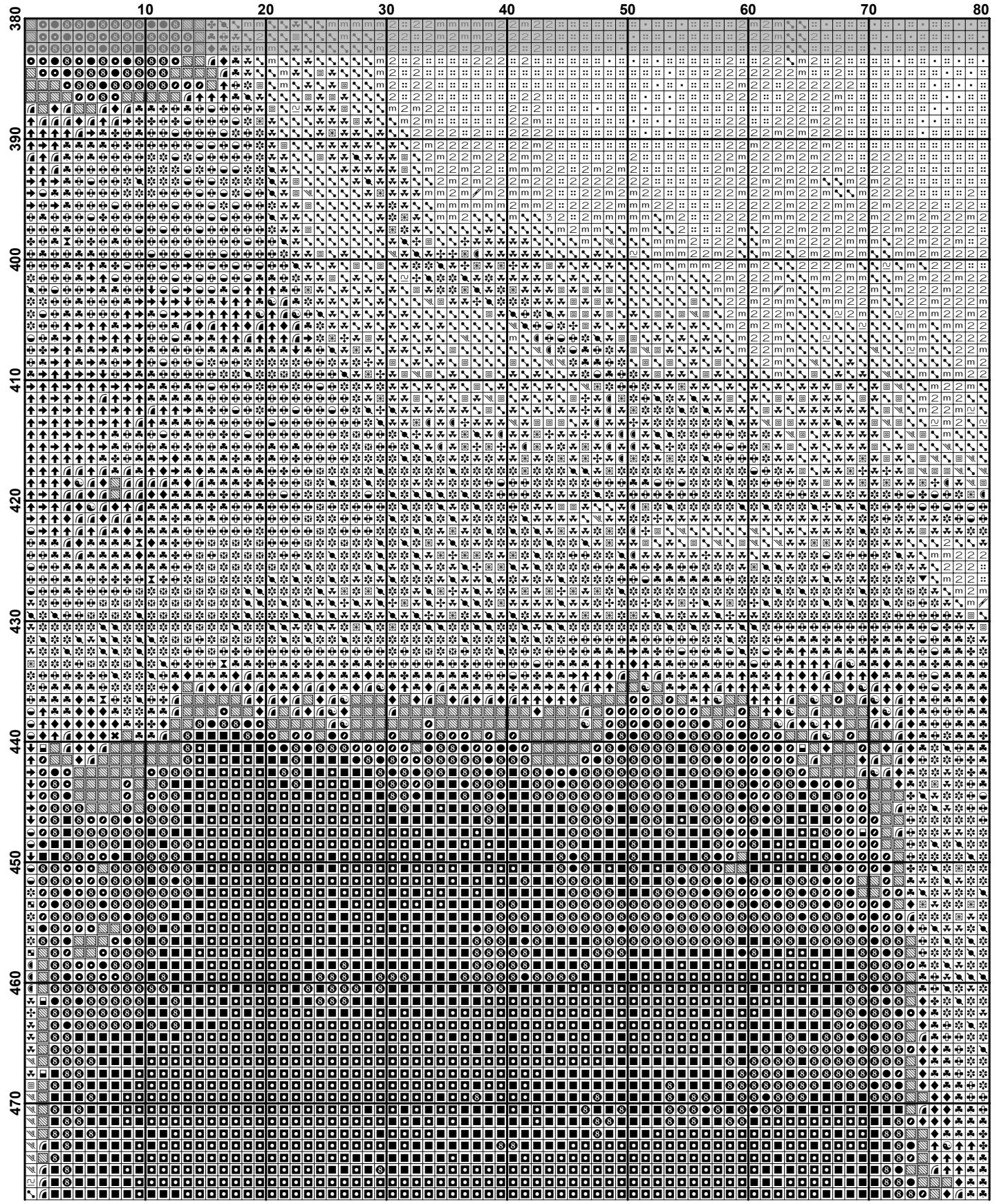






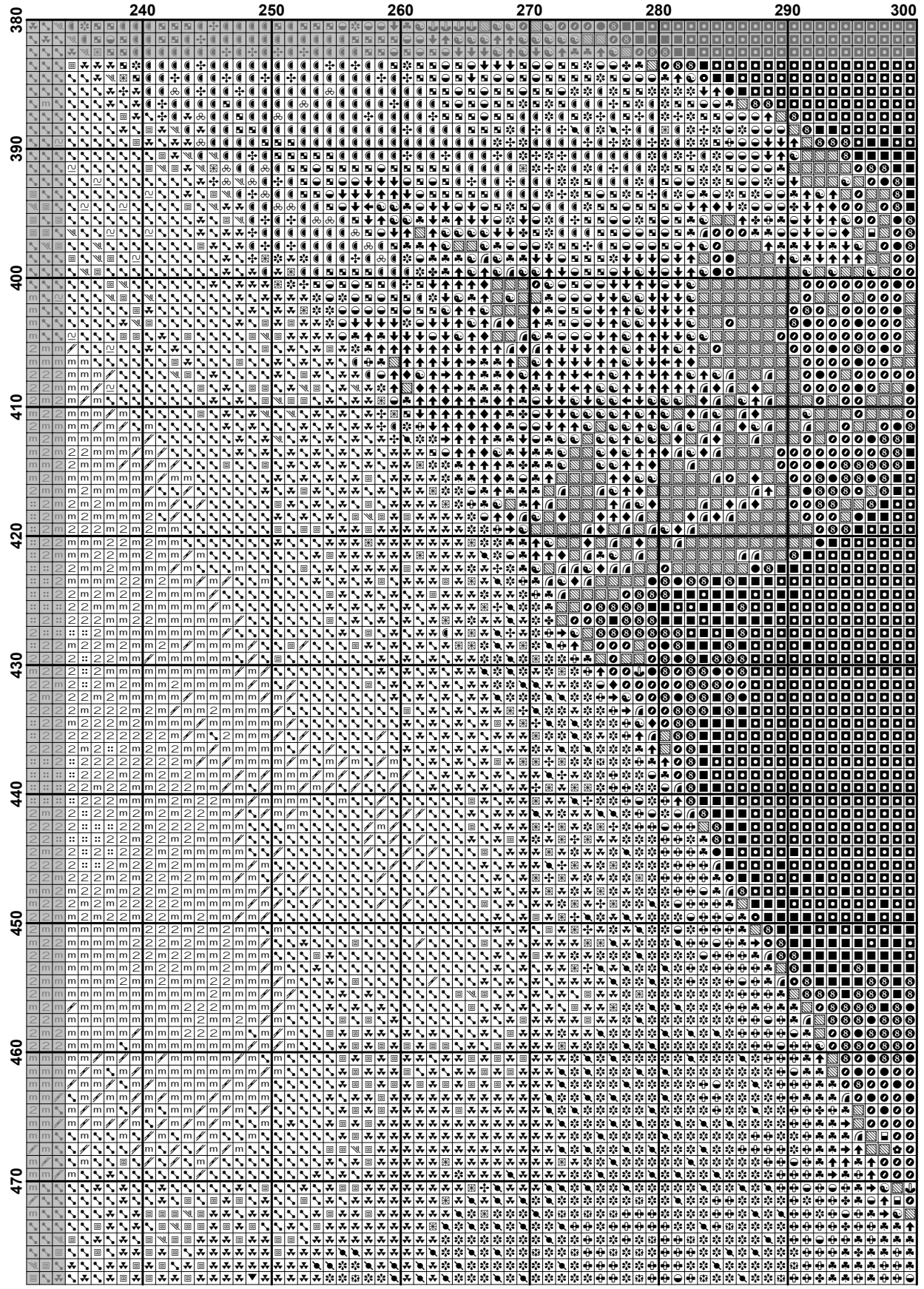
	160	170	180	190	200	210	220	230
290
300
310
320
330
340
350
360
370
380

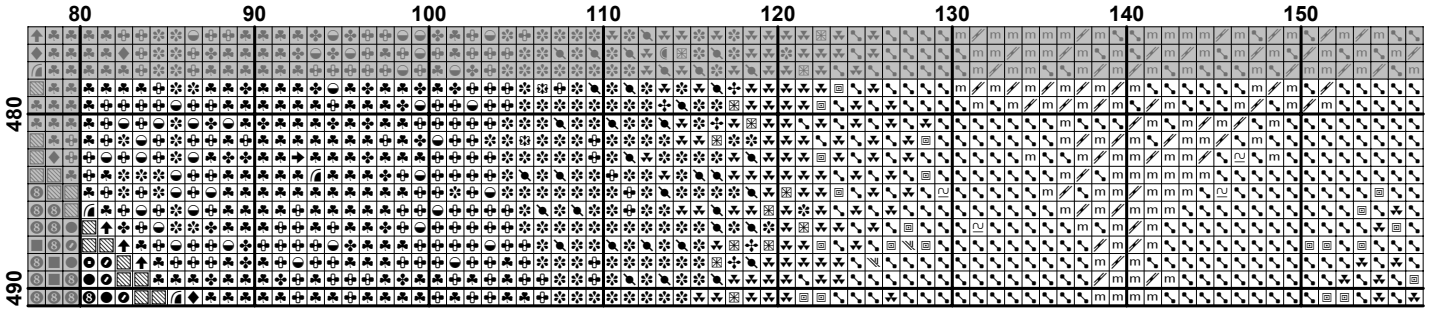




	80	90	100	110	120	130	140	150
380
381
382
383
384
385
386
387
388
389
390
391
392
393
394
395
396
397
398
399
400
401
402
403
404
405
406
407
408
409
410
411
412
413
414
415
416
417
418
419
420
421
422
423
424
425
426
427
428
429
430
431
432
433
434
435
436
437
438
439
440
441
442
443
444
445
446
447
448
449
450
451
452
453
454
455
456
457
458
459
460
461
462
463
464
465
466
467
468
469
470
471
472
473
474
475
476
477
478
479
480

	160	170	180	190	200	210	220	230
380
390
400
410
420
430
440
450
460
470





	240	250	260	270	280	290	300
480
490