



Design size: 76 x 38 stitches

Recommended fabric: 28ct cream linen or evenweave

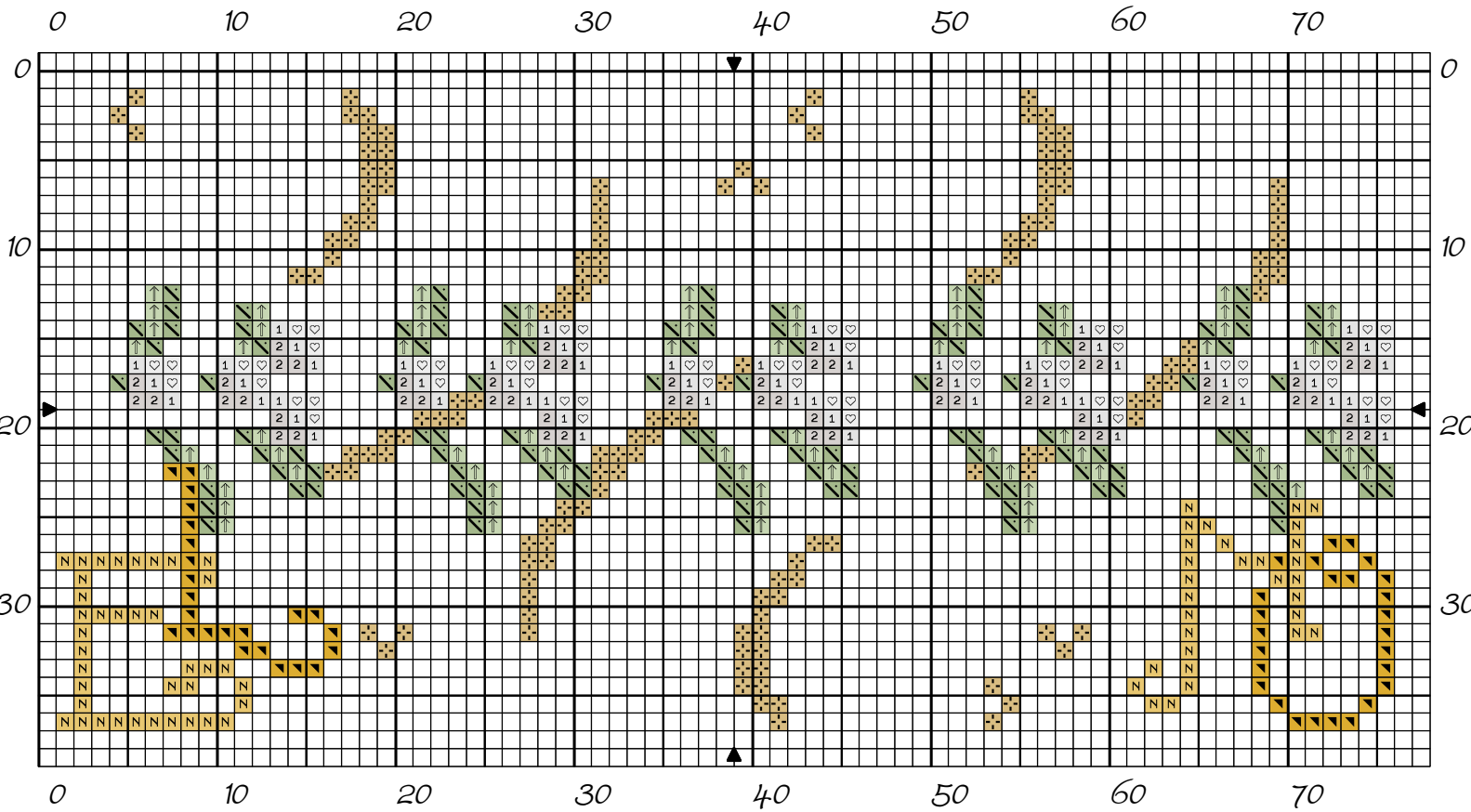
Mistletoe Humbug

Cross-stitch chart
(Ref. XMAS02-BLG)

(c) Faby Reilly 2008 (www.fabyreilly.com)

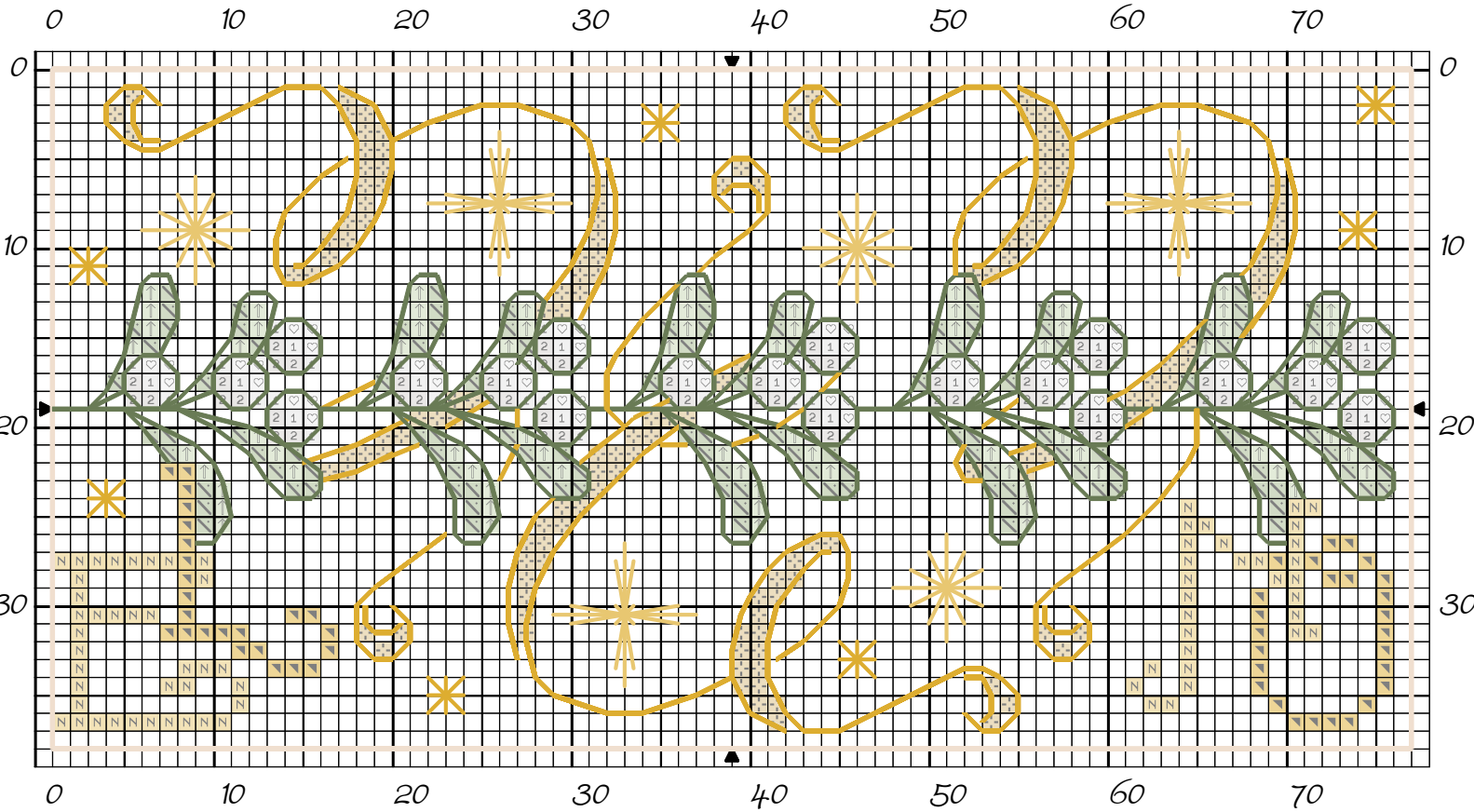
Mistletoe Humbug

Cross-stitch only



Copyright © Faby Reilly 2008 (www.fabyreilly.com)


Chart with backstitch




Copyright © Faby Reilly 2008 (www.fabyreilly.com)

Mistletoe Humbug




Colour Key




DMC DMC Light Effects
Triple Cross Stitch
Light Effects
 E3821


Diamond Eyelet
Light Effects
 E3821

Star Stitch
Light Effects
 E3852

Cross Stitch in:
Stranded Cotton

 834
 989
 2 3024


 164
 White
 1 762

Light Effects
 E3821

 E3852

Backstitch in:
Stranded Cotton

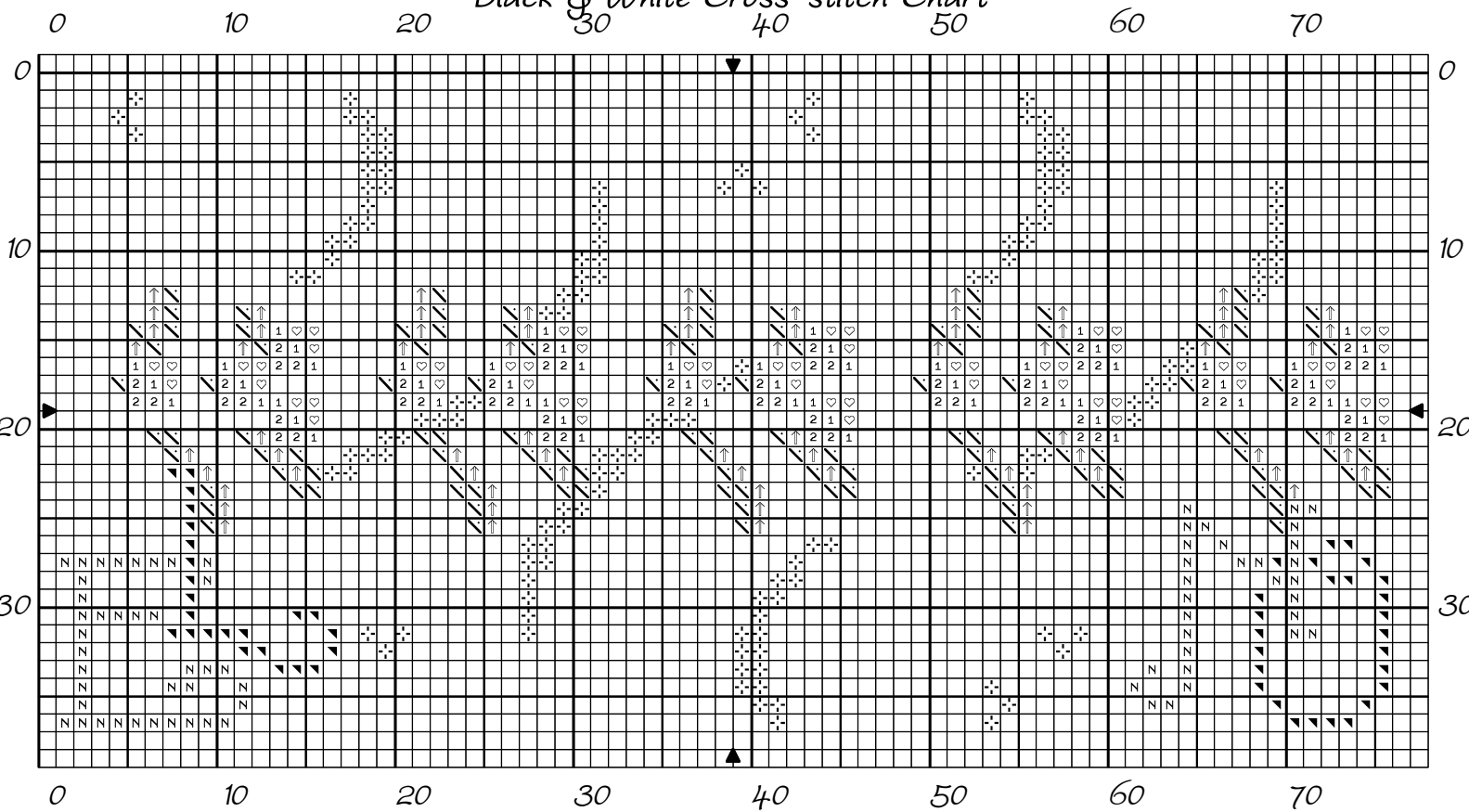
 987  Ecru

Light Effects
 E3852

Copyright © By: Faby Reilly 2008 (www.fabyreilly.com)

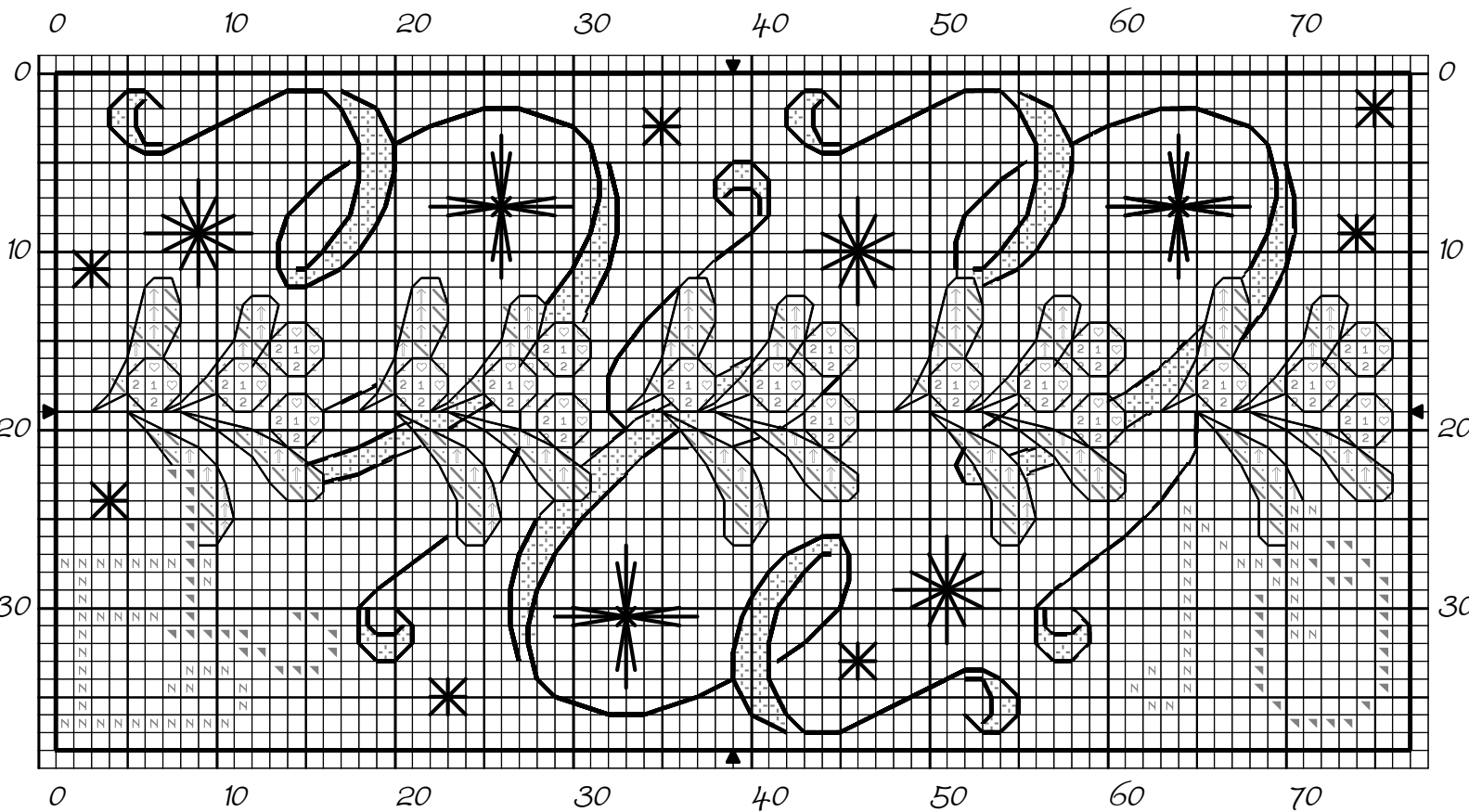
Mistletoe Humbug

Black & White Cross-stitch Chart



Copyright © Faby Reilly 2008 (www.fabyreilly.com)

Black & White Chart with Backstitch



Copyright © Faby Reilly 2008 (www.fabyreilly.com)

Mistletoe Humbug

Black & White Key

DMC DMC Light Effects

Triple Cross Stitch

Light Effects



E3821

Diamond Eyelet

Light Effects



E3821

Star Stitch

Light Effects



E3852

Cross Stitch in:

Stranded Cotton



834



989

2

3024



164



White

1

762

Light Effects

N

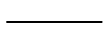
E3821



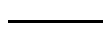
E3852

Backstitch in:

Stranded Cotton

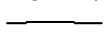


987



Ecrú

Light Effects



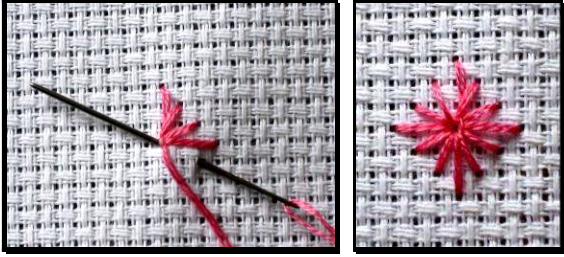
E3852

Copyright © By: Faby Reilly 2008 (www.fabyreilly.com)

Mistletoe Humbug

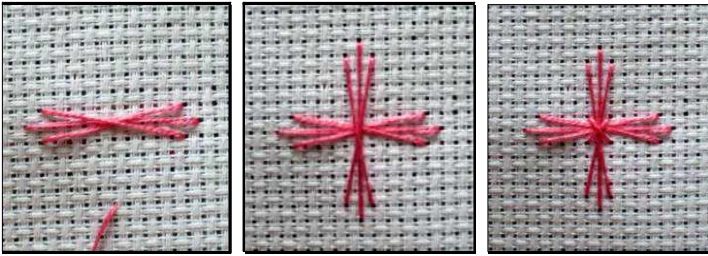
Stitch Tutorial

Diamond Eyed stitch – Point de d'œillet en losanges



Work from the centre of the diamond shape outwards, clockwise.

Triple Cross-stitch – Point de croix triple:

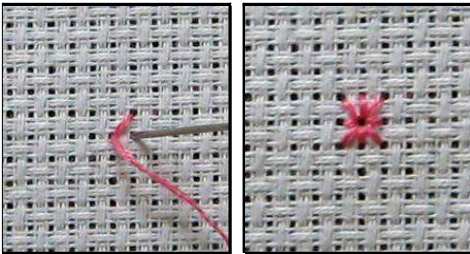


Start with the horizontal branch, made of 3 stitches. (Do the horizontal stitch first – a little longer than the others – then stitch the other 2, crossing over the first one.)

Repeat for the vertical branch of this stitch.

Finish your Triple Cross stitch with a single cross stitch in the centre to hold everything in place.

Star Stitch – Point d'étoile:



Work from the centre of the star shape outwards, clockwise, starting with the first diagonal stitch (in order to keep the vertical stitch for the end)

Mistletoe Humbug

Terms & Conditions

Thank you for purchasing one of my designs. I hope that you will enjoy stitching it as much as I enjoyed designing it.

The use of this design is strictly limited to your **personal use**. Any opying (even without monetary gain) without my express authorisation is strictly forbidden and punishable under copyright law.

You may:

- print out several copies of this chart for your **personal use**.
- personally stitch this design as many times as you wish, as long as the finished pieces are not for resale.
- publish pictures of your stitched work on your blog or personal website, as long as you quote the source of the charts.

You may not:

- make changes to this chart with intent to acquire the copyright.
- print or reproduce this design with intent to sell it or offer it as a free chart.
- publish photographs of this chart without duly quoting its source.
- send copies of this file by email.
- upload this file onto a website.
- make kits from this design.

If you are at all unsure about any particular situation, you would like to ask for a specific authorisation, or you are aware of any infringement of copyright, please contact me straight away at contact@fabyreilly.com

Happy stitching!

Faby Reilly