

# ∞ Tilton Crafts ∞

## Counted Cross Stitch Chart



## Leopard Sanctuary

Stitch Count: 400 x 255

[www.TiltonCrafts.com](http://www.TiltonCrafts.com)

## Instructions

This design is recommended to be stitched over 1 on 25 count fabric, but you may use any count fabric that you are comfortable with. Traditionally, most will use 1 strand of floss for 22ct / 25ct / 28ct, and 2 strands of floss for 14ct / 16ct / 18ct. Charts are recommended to be stitched from page 1 top left to the last page bottom right. (see diagram below). Also, please take a moment to scan over your symbol list before you begin, as some symbols appear similar.

If the chart contains Kreinik 032 #4 (very fine braid) we recommend that you use one strand of the Kreinik along with one strand of white floss.

You may also use the tent stitch or full cross stitches depending on your preference. We want to thank you for purchasing this design and welcome any questions or comments that you may have at any time.

Website: [www.TiltonCrafts.com](http://www.TiltonCrafts.com)

Email: [Support@TiltonCrafts.com](mailto:Support@TiltonCrafts.com)

Start your stitching on Page 1 and continue over to Page 6. Page 7 will start below your Page 1 stitching. Page 13 will start below your page 7 stitching, and so forth.

Page 1	Page 2	Page 3	Page 4	Page 5	Page 6
Page 7	Page 8	Page 9	Page 10	Page 11	Page 12
Page 13	Page 14	Page 15	Page 16	Page 17	Page 18
Page 19	Page 20	Page 21	Page 22	Page 23	Page 24

## **Cleaning & Care**

When handling any needlework, always take the special care that is necessary to keep your work clean. Wash hands frequently to prevent body oils from staining the fabric or cross stitching.

Be sure to remove your cross stitching from the hoop each time you stop stitching to prevent hoop marks from soiling your fabric.

It is recommended that you use approximately 18" lengths of thread when stitching your project. This will help to avoid knotting, twisting, or fraying of the thread while you work.

Your project should be stored in a bag or workbasket when not being stitched to protect it from dust, spills, etc.

## **Washing Instructions For Cross Stitch**

If you have followed the care instructions, you may not find it necessary to launder your piece before framing or finishing it. If, however, your piece has become soiled, wash it following the instructions below:

Always wash each cross stitch separately.

Wash your cross stitch in lukewarm water with a mild detergent or dishwashing liquid. Do NOT use Woolite, harsh detergents, or chlorine bleach.

Rinse cross stitch several times in clear water. Do not worry if water becomes colored when washing your piece – continue rinsing in clear water.

Roll the cross stitch between two clean towels squeezing gently without wringing – Do Not allow cross stitch piece to touch upon itself. Unroll towels and spread out piece flat to dry on a towel. Never leave damp cross stitch folded or in a heap.

To iron your piece, place the dry cross stitch face down between two clean towels and press with a warm, not hot, iron. To remove creases or fold lines from your piece, you may find it necessary to use the steam setting on your iron.

It is NOT recommended that Scotchgard or other products of this type be used on your projects as they may cause chemical reactions with your thread dyes.

It is generally NOT recommended that your cross stitch be dry cleaned. However, certain fabrics (i.e. wools) may require dry cleaning. We suggest that you speak to your local dry cleaner, advising him that there may be a reaction between the thread dyes and the dry cleaning chemicals (i.e. benzene, trichlorethylene, etc).

**Pattern Name:** Leopard Sanctuary  
**Designed By:** Shelley Lee  
**Company:** Tilton Crafts  
**Copyright:** © 2012 Tilton Crafts - Artwork © Cindy Grundsten  
**Fabric:** White - Evenweave, Linen  
**Stitch Count:** 400 W x 255 H  
**Size:** 25ct, 16" x 10-1/8"

Symbol	Type	Number	Color	Skeins
N	DMC	167	Yellow Beige-VY DK	1
♥	DMC	300	Mahogany-VY DK	1
G	DMC	301	Mahogany-MD	1
■	DMC	310	Black	4
A	DMC	370	Mustard-MD	1
◆	DMC	371	Mustard	1
U	DMC	372	Mustard-LT	1
B	DMC	420	Hazelnut Brown-DK	1
∞	DMC	422	Hazelnut Brown-LT	1
▼	DMC	433	Brown-MD	1
Π	DMC	436	Tan	1
#	DMC	437	Tan-LT	1
+	DMC	451	Shell Gray-DK	1
≡	DMC	452	Shell Gray-MD	1
M	DMC	535	Ash Gray-VY LT	1
▲	DMC	610	Drab Brown-DK	1
●	DMC	611	Drab Brown	1
e	DMC	612	Drab Brown-LT	1
d	DMC	613	Drab Brown-VY LT	1
%	DMC	632	Desert Sand-UL VY DK	1
K	DMC	640	Beige Gray-VY DK	1
‘	DMC	676	Old Gold-LT	1
T	DMC	738	Tan-VY LT	1
L	DMC	739	Tan-UL VY LT	1
y	DMC	745	Yellow-LT Pale	1
⌘	DMC	779	Cocoa-DK	1
✕	DMC	801	Coffee Brown-DK	1
∥	DMC	822	Beige Gray-LT	1
✓	DMC	838	Beige Brown-VY DK	1
@	DMC	839	Beige Brown-DK	1
S	DMC	840	Beige Brown-MD	1
X	DMC	841	Beige Brown-LT	1
=	DMC	842	Beige Brown-VY LT	1
Ω	DMC	869	Hazelnut Brown-VY DK	1
▣	DMC	898	Coffee Brown-VY DK	1
4	DMC	902	Garnet-VY DK	1
W	DMC	920	Copper-MD	1
O	DMC	921	Copper	1
★	DMC	938	Coffee Brown-UL DK	2
▣	DMC	939	Navy Blue-VY DK	1
↗	DMC	951	Tawny-LT	1
Æ	DMC	975	Golden Brown-DK	1
F	DMC	977	Golden Brown-LT	1
R	DMC	3011	Khaki Green-DK	1

Symbol	Type	Number	Color	Skeins
2	DMC	3013	Khaki Green-LT	1
¥	DMC	3021	Brown Gray-VY DK	1
C	DMC	3032	Mocha Brown-MD	1
Z	DMC	3033	Mocha Brown-VY LT	1
::	DMC	3371	Black Brown	3
♣	DMC	3740	Antique Violet-DK	1
b	DMC	3770	Tawny-VY LT	1
a	DMC	3772	Desert Sand-VY DK	1
6	DMC	3776	Mahogany-LT	1
¶	DMC	3787	Brown Gray-DK	1
m	DMC	3790	Beige Gray-UL DK	1
/	DMC	3823	Yellow-UL Pale	1
Y	DMC	3827	Golden Brown-Pale	1
5	DMC	3828	Hazelnut Brown	1
§	DMC	3856	Mahogany-UL VY LT	1
☆	DMC	3857	Rosewood-DK	1
E	DMC	3860	Cocoa	1
D	DMC	3862	Mocha Beige-DK	1
8	DMC	3863	Mocha Beige-MD	1
3	DMC	3864	Mocha Beige-LT	1
♡	DMC	3865	Winter White	1

[illegible]

	70	80	90	100	110	120	130	140
0	R	A	R	A	R	A	R	A
1	R	A	R	A	R	A	R	A
2	R	A	R	A	R	A	R	A
3	R	A	R	A	R	A	R	A
4	R	A	R	A	R	A	R	A
5	R	A	R	A	R	A	R	A
6	R	A	R	A	R	A	R	A
7	R	A	R	A	R	A	R	A
8	R	A	R	A	R	A	R	A
9	R	A	R	A	R	A	R	A
10	R	A	R	A	R	A	R	A
11	R	A	R	A	R	A	R	A
12	R	A	R	A	R	A	R	A
13	R	A	R	A	R	A	R	A
14	R	A	R	A	R	A	R	A
15	R	A	R	A	R	A	R	A
16	R	A	R	A	R	A	R	A
17	R	A	R	A	R	A	R	A
18	R	A	R	A	R	A	R	A
19	R	A	R	A	R	A	R	A
20	R	A	R	A	R	A	R	A
21	R	A	R	A	R	A	R	A
22	R	A	R	A	R	A	R	A
23	R	A	R	A	R	A	R	A
24	R	A	R	A	R	A	R	A
25	R	A	R	A	R	A	R	A
26	R	A	R	A	R	A	R	A
27	R	A	R	A	R	A	R	A
28	R	A	R	A	R	A	R	A
29	R	A	R	A	R	A	R	A
30	R	A	R	A	R	A	R	A
31	R	A	R	A	R	A	R	A
32	R	A	R	A	R	A	R	A
33	R	A	R	A	R	A	R	A
34	R	A	R	A	R	A	R	A
35	R	A	R	A	R	A	R	A
36	R	A	R	A	R	A	R	A
37	R	A	R	A	R	A	R	A
38	R	A	R	A	R	A	R	A
39	R	A	R	A	R	A	R	A
40	R	A	R	A	R	A	R	A
41	R	A	R	A	R	A	R	A
42	R	A	R	A	R	A	R	A
43	R	A	R	A	R	A	R	A
44	R	A	R	A	R	A	R	A
45	R	A	R	A	R	A	R	A
46	R	A	R	A	R	A	R	A
47	R	A	R	A	R	A	R	A
48	R	A	R	A	R	A	R	A
49	R	A	R	A	R	A	R	A
50	R	A	R	A	R	A	R	A
51	R	A	R	A	R	A	R	A
52	R	A	R	A	R	A	R	A
53	R	A	R	A	R	A	R	A
54	R	A	R	A	R	A	R	A
55	R	A	R	A	R	A	R	A
56	R	A	R	A	R	A	R	A
57	R	A	R	A	R	A	R	A
58	R	A	R	A	R	A	R	A
59	R	A	R	A	R	A	R	A
60	R	A	R	A	R	A	R	A
61	R	A	R	A	R	A	R	A
62	R	A	R	A	R	A	R	A
63	R	A	R	A	R	A	R	A
64	R	A	R	A	R	A	R	A
65	R	A	R	A	R	A	R	A
66	R	A	R	A	R	A	R	A
67	R	A	R	A	R	A	R	A
68	R	A	R	A	R	A	R	A
69	R	A	R	A	R	A	R	A
70	R	A	R	A	R	A	R	A
71	R	A	R	A	R	A	R	A
72	R	A	R	A	R	A	R	A
73	R	A	R	A	R	A	R	A
74	R	A	R	A	R	A	R	A
75	R	A	R	A	R	A	R	A
76	R	A	R	A	R	A	R	A
77	R	A	R	A	R	A	R	A
78	R	A	R	A	R	A	R	A
79	R	A	R	A	R	A	R	A
80	R	A	R	A	R	A	R	A

[illegible]

[illegible]

	280										290										300										310										320										330										340										350																													
0																																																																																																				
10																																																																																																				
20																																																																																																				
30																																																																																																				
40																																																																																																				
50																																																																																																				
60																																																																																																				
70																																																																																																				
80																																																																																																				
90																																																																																																				

[illegible]

	0	10	20	30	40	50	60	70
80	Ω	Ω	Ω	Ω	Ω	Ω	Ω	Ω
90	Ω	Ω	Ω	Ω	Ω	Ω	Ω	Ω
100	Ω	Ω	Ω	Ω	Ω	Ω	Ω	Ω
110	Ω	Ω	Ω	Ω	Ω	Ω	Ω	Ω
120	Ω	Ω	Ω	Ω	Ω	Ω	Ω	Ω
130	Ω	Ω	Ω	Ω	Ω	Ω	Ω	Ω
140	Ω	Ω	Ω	Ω	Ω	Ω	Ω	Ω
150	Ω	Ω	Ω	Ω	Ω	Ω	Ω	Ω
160	Ω	Ω	Ω	Ω	Ω	Ω	Ω	Ω

[illegible]

[illegible]

	210	220	230	240	250	260	270	280
80	210	220	230	240	250	260	270	280
90	210	220	230	240	250	260	270	280
100	210	220	230	240	250	260	270	280
110	210	220	230	240	250	260	270	280
120	210	220	230	240	250	260	270	280
130	210	220	230	240	250	260	270	280
140	210	220	230	240	250	260	270	280
150	210	220	230	240	250	260	270	280
160	210	220	230	240	250	260	270	280

[illegible]

	350	360	370	380	390	400
80	==	==	==	==	==	==
90	==	==	==	==	==	==
100	==	==	==	==	==	==
110	==	==	==	==	==	==
120	==	==	==	==	==	==
130	==	==	==	==	==	==
140	==	==	==	==	==	==
150	==	==	==	==	==	==
160	==	==	==	==	==	==

	0	10	20	30	40	50	60	70
160	...	...	...	...	...	...	...	...
170	...	...	...	...	...	...	...	...
180	...	...	...	...	...	...	...	...
190	...	...	...	...	...	...	...	...
200	...	...	...	...	...	...	...	...
210	...	...	...	...	...	...	...	...
220	...	...	...	...	...	...	...	...
230	...	...	...	...	...	...	...	...
240	...	...	...	...	...	...	...	...

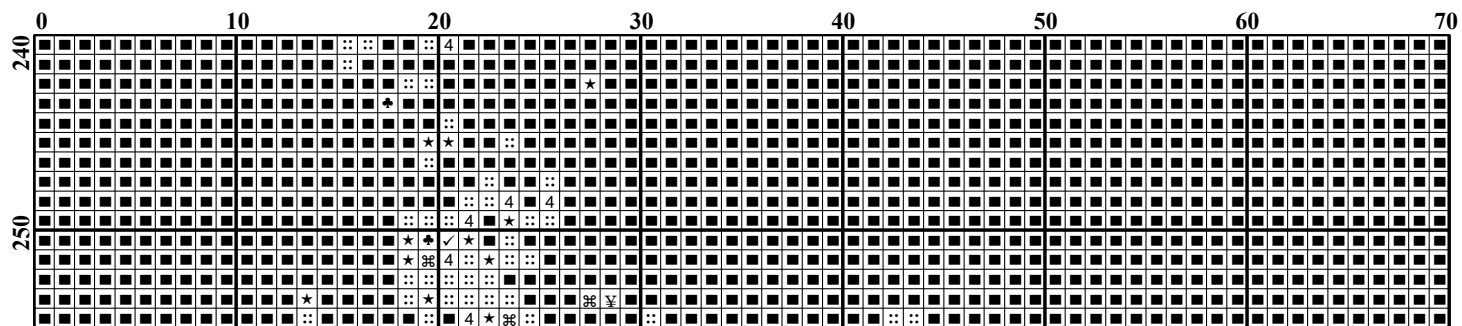
	70	80	90	100	110	120	130	140
160	★	★	★	★	★	★	★	★
170	★	★	★	★	★	★	★	★
180	★	★	★	★	★	★	★	★
190	★	★	★	★	★	★	★	★
200	★	★	★	★	★	★	★	★
210	★	★	★	★	★	★	★	★
220	★	★	★	★	★	★	★	★
230	★	★	★	★	★	★	★	★
240	★	★	★	★	★	★	★	★

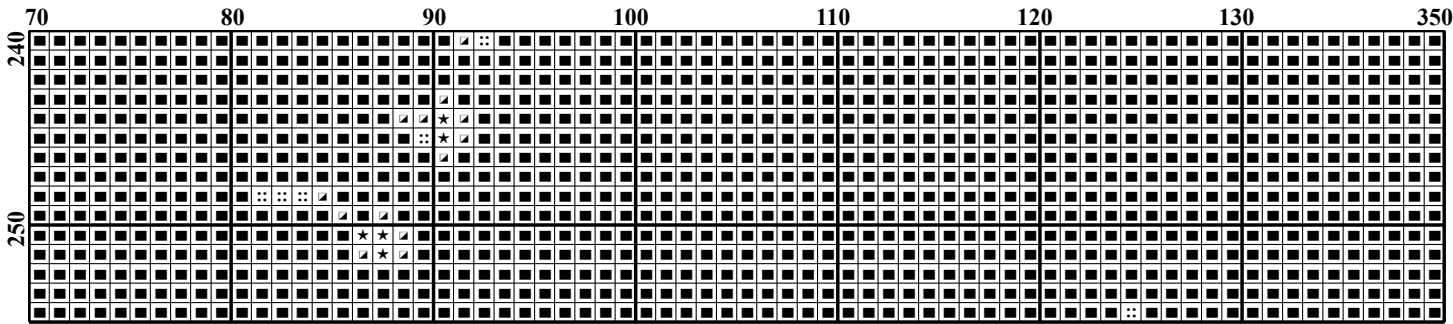
[illegible]

[illegible]

[illegible]

	350	150	370	380	390	400
160	3	3	3	3	3	3
170	3	3	3	3	3	3
180	3	3	3	3	3	3
190	3	3	3	3	3	3
200	3	3	3	3	3	3
210	3	3	3	3	3	3
220	3	3	3	3	3	3
230	3	3	3	3	3	3
240	3	3	3	3	3	3





[illegible]

[illegible]

[illegible]

[illegible]