

Fresh Spring Fashions and Accessories • Rose Garden Pillow and Birthday Flowers

Sharing the Art and Soul of

Crochet!

Crochetmagazine.com

MAY 2004

Elegant
**EVENING
JACKET** and
CHOKER

Light-and-Lacy
AFGHANS

Sunday-Best
**HEIRLOOM
BABY SET**

Fun, Easy
**PAPER RIBBON
BASKET**



Spring Green Cardigan

DESIGNED BY MARGRET WILLSON,
MEMBER OF CROCHET GUILD OF AMERICA

Indulge in the fresh, feminine appeal of this beautifully styled, lightweight sweater that features repeating openwork diamonds on the front and sleeves. Its sophisticated good looks make it perfect to wear for almost any occasion.

FINISHED SIZE

Instructions given fit 34-inch bust (*small*); changes for 38-inch (*medium*), 42-inch (*large*), 46-inch (*X-large*) and 50-inch (*2X-large*) are in [].

FINISHED GARMENT MEASUREMENT

38 inches [42 inches, 46 inches, 50 inches, 54 inches]

MATERIALS

- 11 [12, 13, 15, 16] (200 yd.) hanks Sea Stone #17 CGOA Presents "Blithe" (cgoapresents.com) or fingering weight yarn
- No. 3/2.1mm steel hook or hook size needed to obtain gauge
- Eight ¾-inch buttons
- Tapestry needle

GAUGE

28 dc and 15 dc rows = 4 inches.

BASIC STITCHES

Ch, sl st, sc, hdc, dc, tr

BACK

Row 1: Ch 135 [149, 163, 177,

191], dc in fourth ch from hook, dc in each remaining ch across, turn. (133 dc, counting last 3 chs of foundation ch as first dc) [147, 161, 175, 189 dc, counting last 3 chs of foundation ch as first dc]

Rows 2–46: Ch 3 (counts as first dc throughout), dc in each remaining dc across, turn. At end of row 46, fasten off, turn. (133 dc) [147, 161, 175, 189 dc]

Row 47: For *underarm shaping*, skip first 13 [14, 16, 21, 21] sts, join in next st, dc across to last 13 [14, 16, 21, 21] sts, leave remaining sts unworked, turn. (107 dc) [119, 129, 133, 147 dc]

Rows 48–76 [48–78, 48–80, 48–82, 48–84]: Ch 3, dc in each remaining dc across, turn. (107 dc) [119, 129, 133, 147 dc]

Row 77 [79, 81, 83, 85]: For *back neck shaping and right shoulder*, ch 3, dc in each of next 26 [30, 33, 33, 38] dc, dc next 2 sts tog (see *Stitch Guide*)—decrease made—turn. (28 sts) [32, 35, 35, 40 sts]

Row 78 [80, 82, 84, 86]: Ch 3, dc in each remaining st across, ch 1, turn. (28 dc) [32, 35, 35, 40 dc]

Row 79 [81, 83, 85, 87]: Sc in each of first 9 [10, 11, 11, 13] dc, hdc in each of next 9 [10, 11, 11, 13] dc, dc in each of next 10 [12, 13, 13, 14] dc. Fasten off. (28 sts) [32, 35, 35, 40 sts]

Note: For *beg dc dec*, ch 2, dc in next st.

Row 77 [79, 81, 83, 85]: For *left shoulder*, skip next 49 [53, 57, 61, 65] sts on Back, join in next st, **beg dc dec** (see *Note*), dc in each remaining st across, turn. (28 sts) [32, 35, 35, 40 sts]

Row 78 [80, 82, 84, 86]: Ch 3, dc in each remaining dc across, turn. (28 dc) [32, 35, 35, 40 dc]

Row 79 [81, 83, 85, 87]: Ch 3, dc in each of next 9 [11, 12, 12, 13] sts, hdc in each of next 9 [10, 11, 11, 13] sts, sc in each of next 9 [10, 11, 11, 13] sts, fasten off. (28 sts) [32, 35, 35, 40 sts]

RIGHT FRONT

Row 1: Ch 65 [72, 79, 86, 93], dc in fourth ch from hook, dc in each remaining ch across, turn. (63 dc, counting last 3 chs of foundation ch as first dc) [70, 77, 84, 91 dc, counting last 3 chs of foundation ch as first dc]

Row(s) 2 [2–4, 2–6, 2–6, 2–8]: Ch 3, dc in each dc across, turn. (63 dc) [70, 77, 84, 91 dc]

Row 3 [5, 7, 7, 9]: Ch 3, dc in each of next 27 [30, 34, 37, 41] dc, ch 4, skip 3 dc, sc in next dc, ch 4, skip 3 dc, dc in each of next 28 [32, 35, 39, 42] dc, turn.

Row 4 [6, 8, 8, 10]: Ch 3, dc in each dc to within 2 dc of first ch-4 sp, (ch 4, sc in next sp) twice, ch 4, skip 2 dc, dc in each remaining dc across, turn.

Row 5 [7, 9, 9, 11]: Ch 3, dc in each dc to within 2 dc of first ch-4 sp, ch 4, sc in first sp, ch 4, 4 tr in next sp, ch 4, sc in next sp, ch 4, skip 2 dc, dc in each remaining dc across, turn.

Row 6 [8, 10, 10, 12]: Ch 3, dc in each dc to within 2 dc of first ch-4 sp, (ch 4, sc in next sp) 4 times, ch 4, skip 2 dc, dc in each remaining dc across, turn.

Row 7 [9, 11, 11, 13]: Ch 3, dc in each dc to within 2 dc of first

ch-4 sp, (ch 4, sc in next sp, ch 4, 4 tr in next sp) twice, ch 4, sc in next sp, ch 4, skip 2 dc, dc in each remaining dc across, turn.

Row 8 [10, 12, 12, 14]: Ch 3, dc in each dc to within 2 dc of first ch-4 sp, (ch 4, sc in next sp) 6 times, ch 4, skip 2 dc, dc in each remaining dc across, turn.

Row 9 [11, 13, 13, 15]: Ch 3, dc in each dc to within 2 dc of first ch-4 sp, (ch 4, sc in next sp, ch 4, 4 tr in next sp) 3 times, ch 4, sc in next sp, ch 4, skip 2 dc, dc in each remaining dc across, turn.

Row 10 [12, 14, 14, 16]: Ch 3, dc in each dc to first ch-4 sp, 2 dc in sp, (ch 4, sc in next sp) 6 times, ch 4, 2 dc in next sp, dc in each remaining dc across, turn.

Row 11 [13, 15, 15, 17]: Ch 3, dc in each dc across to first ch-4 sp, 2 dc in sp, (ch 4, sc in next sp, ch 4, 4 tr in next sp) twice, ch 4, sc in next sp, ch 4, 2 dc in next sp, dc in each remaining dc across, turn.

Row 12 [14, 16, 16, 18]: Ch 3, dc in each dc across to first ch-4 sp, 2 dc in first sp, (ch 4, sc in next sp) 4 times, ch 4, 2 dc in next sp, dc in each remaining dc across, turn.

Row 13 [15, 17, 17, 19]: Ch 3, dc in each dc across to first ch-4 sp, 2 dc in sp, ch 4, sc in next sp, ch 4, 4 tr in next sp, ch 4, sc in next sp, ch 4, 2 dc in next sp, dc in each remaining dc across, turn.

Row 14 [16, 18, 18, 20]: Ch 3, dc in each dc across to first ch-4 sp, 2 dc in sp, (ch 4, sc in next sp) twice, ch 4, 2 dc in next sp, dc in each remaining dc across, turn.

Row 15 [17, 19, 19, 21]: Ch 3, dc in each dc across to first ch-4 sp, 2 dc in sp, ch 4, sc in next sp, ch 4, 2 dc in next sp, dc in each remaining dc across, turn.

Row 16 [18, 20, 20, 22]: Ch 3, dc in each dc across to first ch-4 sp, 3 dc in sp, dc in next sc, 3 dc in next sp, dc in each remaining dc across, turn. (63 dc) [70, 77, 84, 91 dc]

Note: Repeat rows 3–16 [5–18, 7–20, 7–20, 9–22] for pattern.

Continued on page 47



Easy Breezy Shell

DESIGNED BY MELISSA LEAPMAN,
MEMBER OF CROCHET GUILD OF AMERICA

Be cool and comfortable in this easy-wear cotton shell. Its smart, simple design worked in a dainty, textured stitch is perfect for both casual and dressier wardrobes.

FINISHED SIZES

Instructions given fit 32½-inch bust (*X-small*); changes for 34-inch (*small*), 36-inch (*medium*), 38-inch (*large*) and 40-inch (*X-large*) are in [].

MATERIALS

- 4(4,4,5,5) skeins Ice Blue #106 Cotton-Ease by Lion Brand or cotton/acrylic blend worsted yarn
- G/4.5mm hook or hook size needed to obtain gauge
- Tapestry needle

GAUGE

15 sts and 12 rows worked in pattern = 4 inches.

BASIC STITCHES

Ch, sl st, sc, dc

BACK

Row 1: Ch 63 [65, 69, 73, 77], skip 3 chs (counts as first dc), sc in next ch, (dc in next ch, sc in next ch) across to last ch, dc in last ch, ch 1, turn. (61sts) [63, 67, 71, 75 sts]

Row 2 (wrong side): (Sc in next dc, dc in next sc) across, ending with sc in top of beg ch-3, turn.

(61 sts) [63, 67, 71, 75 sts]

Row 3: Ch 3 (counts as first dc throughout), (sc in next dc, dc in next sc) across, ch 1, turn. (61 sts) [63, 67, 71, 75 sts]

Repeat rows 2 and 3 alternately until Back measures 11½ [11, 11, 11] inches from beg, ending after a wrong side row, **turn**.

Armhole Shaping

Row 1: Sl st in each of first 5 sts, ch 3, (sc in next dc, dc in next sc) across to last 4 sts, leave 4 sts unworked, ch 1, turn. (53 sts) [55, 59, 63, 67 sts]

Row 2: Work even in established pattern, turn.

Notes: For **beg dec**, ch 1, (yo, draw up a lp) in each of first 2 sts, yo, draw through all 5 lps on hook.

For **end dec**, (yo, draw up a lp) in each of last 2 sts, yo, draw through all 5 lps on hook.

Continuing in established pattern, work **beg dec** (see Notes) and **end dec** (see Notes) on next row and every other row for a total of 7 [7, 6, 5, 4] times, then work beg dec and end dec on every row 6 [7, 10, 13, 16] times. Fasten off at end of last dec row. (27 sts for all sizes)



FRONT

Rows 1–3: Repeat same rnds of Back. Repeat rows 2 and 3 alternately until Front measures 11½ [11, 11, 11] inches from beg, ending after a wrong side row, **turn**.

Armhole Shaping

Rows 1 & 2: Repeat same rows of Back Armhole Shaping.

Continue working same as Back Armhole Shaping until 43 [43, 47, 45, 47] sts remaining. Place two markers to indicate 13 center sts.

Next row: For **first neck shaping**, continue in established dec pattern for Armhole Shaping, working across to first marker, leave remaining sts unworked, turn.

Continuing in established dec pattern for Armhole Shaping, dec one st at neck edge every row

6 times. Fasten off at end of last dec row. (1 st remaining at end of all dec rows)

Next row: For **second neck shaping**, join yarn in next unworked st after second marker; continuing in established dec pattern for Armhole Shaping, work across to end of row, turn.

Continuing in established dec pattern for Armhole Shaping, dec one st at neck edge every row 6 times. Fasten off at end of last dec row. (1 st remaining at end of all dec rows)

FINISHING

Sew one st at each edge of Front to each corresponding end st of Back.

Sew side seams.

With right side facing, work 1 rnd sc around each armhole for **armhole edging**.

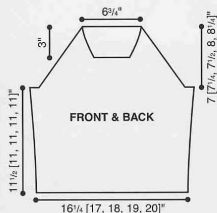
With right side facing, work 1 rnd sc around neck opening for **neckline edging**.

NECK BAND

Row 1: Ch 17, sc in second ch from hook, sc in each remaining ch across, ch 1, turn. (16 sc)

Row 2: Working in **back lps** only this row, sc in each sc across, ch 1, turn. Repeat row 2 until Neck Band, when slightly stretched, fits around neck opening. Fasten off.

With tapestry needle, sew last row to base of row 1. Sew Neck Band to neck opening.♦♦





Shades of Roses Painted Scarf

DESIGNED BY
FEROSA HAROLD

The exquisitely subtle shades of red, pink and white in this delicate scarf give it the appearance of fine hand painting. If you loved our Painted Dollies, you'll surely be inspired to take the method one step further—into the world of high fashion!

FINISHED SIZE

6½ x 63 inches

off after last rows of Graphs A, B and C.

MATERIALS

- Coats Rayon Machine Embroidery Thread Art. #D74:
 - 3 spools Ming Cherry #33A (A)
 - 3 spools Hot Petunia #394 (B)
 - 3 spools Ellen Rose #387 (C)
 - 3 spools Rose #32A (D)
 - 3 spools Dark Old Rose #158 (E)
 - 3 spools Light Pink #30 (F)
 - 3 spools Powder Pink #495 (G)
 - 3 spools White #1 (H)
- No. 14/.60mm steel hook or hook size needed to obtain gauge

GAUGE

21 mesh or blocks = 3 inches;
19 dc rows = 3 inches.

BASIC STITCHES

Ch, sl st, sc, dc

NOTES FOR GRAPHS

(starting on page 16)

Scarf is worked with three strands of thread held tog throughout. See Color Key accompanying each graph for correct color combinations.

Work all odd-numbered graph rows from right to left. Work all even-numbered graph rows from left to right.

Beg at bottom of Graph A and work through Graph D. Do not fasten

SCARF

Notes: For **mesh**, ch 2, skip next 2 chs or next 2 sts, dc in next ch or st.

For **beginning mesh (beg mesh)**, ch 5 (counts as first dc and ch-2 sp), skip next ch sp, dc in next ch or st.

For **block**, 2 dc in next ch sp, dc in next st, or, dc in next 3 chs or sts.

For **beginning cluster (beg cl)**, ch 3; holding back on hook last lp of each st, 2 dc in third ch from hook, yo, draw through all 3 lps on hook.

For **cluster (cl)**, holding back on hook last lp of each st, work 3 dc in indicated st, yo, draw through all 4 lps on hook.

For **diamond stitch**, work in 2 rows as follows:

For **diamond stitch first row**, skip next ch-2 sp or next 2 dc, (cl (see Notes), 2 **beg cl** (see Notes), cl) in next dc, skip next ch-2 sp or next 2 dc, dc in next dc.

For **diamond stitch second row**, ch 2, sc between 2 beg cls, ch 2, dc in next dc.

Row 1: With three strands A held tog, ch 131, dc in eighth ch from hook (first mesh made), 41 **mesh** (see Notes), turn. (42 mesh)

Row 2: **Beg mesh** (see Notes), 11 mesh, **diamond stitch first row** (see Notes), 6 mesh, 2 **blocks** (see Notes), 6 mesh, diamond stitch first

row, 12 mesh, turn.

Row 3: **Beg mesh**, 11 mesh, **diamond stitch second row** (see Notes), 4 mesh, 2 blocks, diamond stitch second row, 2 blocks, 4 mesh, diamond stitch second row, 12 mesh, turn.

Rows 4–10: Work according to Graph A on page 16, turn.

Row 11: Drop one strand A, add one strand B, work according to Graph A, turn.

Rows 12–125: Work according to Graph A on page 16, changing colors as indicated in Color Key for Graph A. Do not fasten off at end of row 125; turn.

Rows 126–249: Work according to Graph B on page 16, changing colors as indicated in Color Key for Graph B. Do not fasten off at end of row 249; turn.

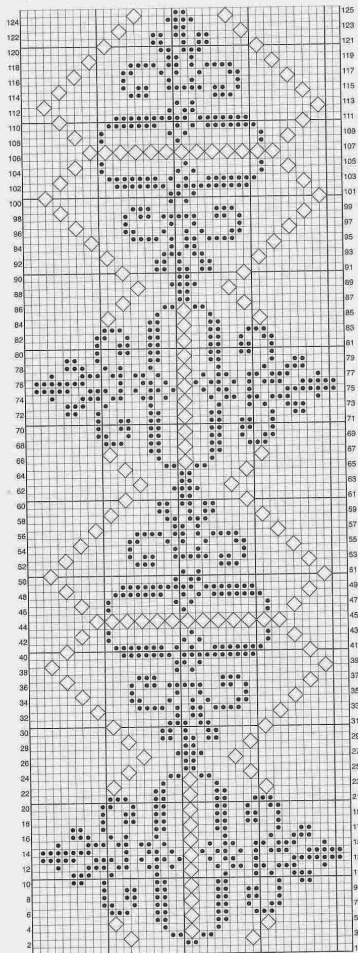
Rows 250–373: Work according to Graph C on page 17, changing colors as indicated in Color Key with Graph C. Do not fasten off at end of row 373; turn.

Rows 374–398: Work according to Graph D on page 48, changing colors as indicated in Color Key with Graph D. Fasten off at end of row 398, turn.

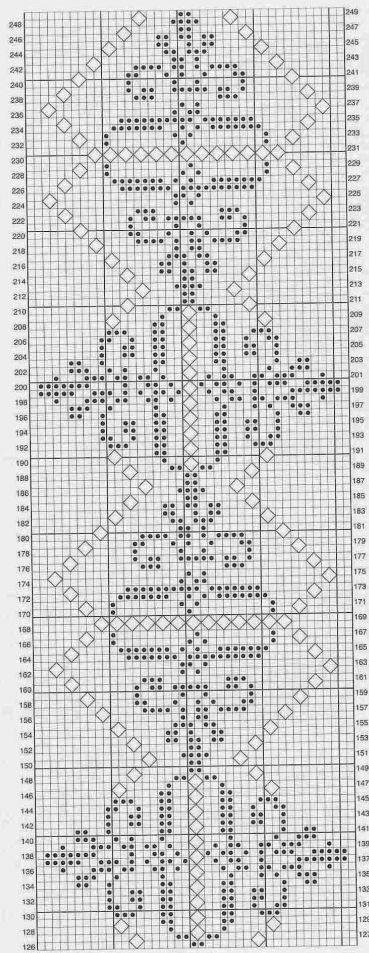
EDGING

Join three strands E held tog in last mesh worked; working across last

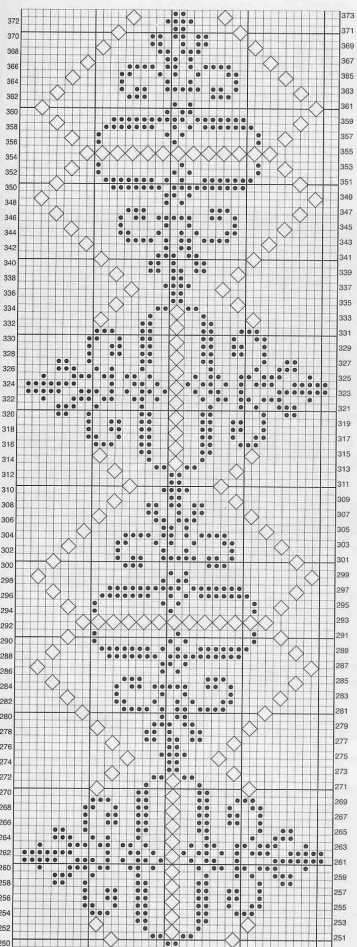
Continued on page 17



Graph A



Graph B



row, ch 1, (sc, ch 3, 2 sc, ch 3, sc) in same corner mesh as joining, *(sc, ch 3, sc) in each mesh across to next corner mesh**, (sc, ch 3, 2 sc, ch 3, sc) in corner mesh, repeat from * around scarf, ending last repeat at **, join with sl st in first sc. Fasten off.**

Graph C

Garden Reflections Afghan

DESIGNED BY DIANE T. STONE

Welcome spring with a glorious bouquet of pastel flowers! Elegant floral motifs worked in a palette of soft colors and highlighted with textured stitches create a light, airy afghan that holds the promise of gentle breezes and warm days ahead.

FINISHED SIZE
56 x 63 inches

MATERIALS

- Red Heart Soft Baby Art. E705 by Coats and Clark or sport weight yarn:
14 oz. White #7001
7 oz. Lilac #7588
7 oz. Powder Pink #7737 (lt. pink)
7 oz. Pinkie #7725 (dk. pink)
7 oz. Lime #7624 (green)
- F/4mm hook or hook size needed to obtain gauge

GAUGE

Each Motif is 5 inches in diameter.

BASIC STITCHES

Ch, sl st, sc, dc, tr



FIRST ROW

First Motif

Rnd 1: Form a ring with dk. pink, work 12 sc in ring, join with sl st in first sc, pull end of thread tightly to close ring. (12 sc)

Rnd 2: Ch 1, sc in same sc as joining, sc in each remaining sc around, join with sl st in first sc. Fasten off.

Rnd 3: Join lilac with sl st in same sc as joining, *(ch 3, tr, ch 3, sl st) in same sc**, sl st in next sc, repeat from * around, ending last repeat

at **, join with sl st in st at base of beg ch-3, fasten off. (12 petals)

Rnd 4: Join green with a sl st in any tr, ch 1, sc in same tr, (ch 5, sc in next tr) around, ending with ch 2, dc in first sc to form last ch-5 sp. (12 ch-5 sps)

Rnd 5: Ch 1, (sc, ch 3, sc) in sp just formed, ch 5, ((sc, ch 3, sc) in next sp, ch 5) around, join with sl st in first sc. Fasten off.

Note: For 5-dc popcorn (5-dc pc), 5 dc in indicated st or sp, drop lp

from hook, insert hook in first dc, draw dropped lp through.

Rnd 6: Join white with a *sl st* in any ch-5 sp, ch 1, sc in same sp, *ch 5, **5-dc pc** (see Note) in next ch-3 sp**, ch 5, sc in next ch-5 sp, repeat from * around, ending last repeat at **, ch 2, dc in first sc to form last ch-5 sp. (12 5-dc pcs)

Rnd 7: Ch 1, sc in sp just formed, ch 5, (sc in next sp, ch 5) around, join with *sl st* in first sc, fasten off. (24 ch-5 sps)

Second Motif

Rnds 1–6: Rep same rnds of First Motif.

Rnd 7: Ch 1, sc in sp just formed, ch 2, sc in any ch-5 sp on previous Motif, ch 2, sc in next sp on working Motif, (ch 2, sc in next sp on previous Motif, ch 2, sc in next sp on working Motif) twice, continued around as for rnd 7 of First Motif.

Third Motif

Rnds 1–7: Repeat same rnds of Sec-

ond Motif, joining on rnd 7 to 3 ch-5 sps directly opposite 3 joined ch-5 sps of previous Motif.

Repeat Third Motif seven more times for a total of 10 Motifs.

SECOND ROW

First Motif

Rnds 1–6: Repeat same rnds of First Row First Motif.

Rnd 7: Ch 1, sc in sp just formed, ch 2, skip 3 sps below last joining of First Row First Motif, sc in next sp, ch 2, sc in next sp on working Motif, (ch 2, sc in next ch-5 sp on previous Motif, ch 2, sc in next sp on working Motif) twice, continue around as for First Row First Motif.

Second Motif

Rnds 1–6: Repeat same rnds of First Row First Motif.

Rnd 7: Ch 1, sc in sp just formed, ch 2, sc in sixth ch-5 sp to the right of last joining at left-hand edge of corresponding Motif on previous row, ch 2, sc in next ch-5 sp on

working Motif, (ch 2, sc in next ch-5 sp on previous Motif, ch 2, sc in next sp on working Motif) twice, (ch 5, sc in next ch-5 sp on working Motif) 3 times, (ch 2, sc in next sp on previous Motif, ch 2, sc in next sp on working Motif) 3 times, continue around as for rnd 7 of First Row First Motif.

Repeat Second Motif eight more times for a total of 10 Motifs.

Repeat Second Row nine more times for a total of 11 rows.

Filler Motif

Notes: Work a Filler Motif in each sp between joined Motifs.

For **3-dc popcorn (3-dc pc)**, 3 dc in indicated st or sp, drop lp from hook, insert hook in first dc, draw dropped lp through.

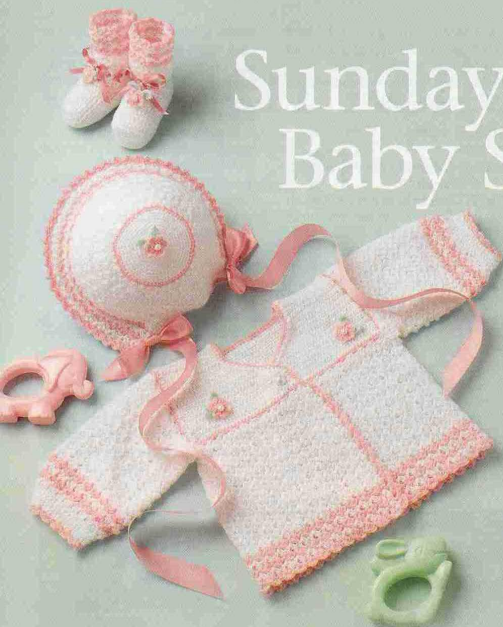
For **beg 3-dc popcorn (beg 3-dc pc)**, (ch 3, 2 dc) in indicated st or sp, drop lp from hook, insert hook in top of ch-3, draw dropped lp through.

For **4-dc popcorn (4-dc pc)**, 4 dc

Continued on page 48

Sunday-Best Baby Set

ADAPTED FROM A
VINTAGE PATTERN



Delicate details and timeless styling create an heirloom treasure in this adorable shell stitch sweater set adorned with sweet flowers and dainty pearls.

FINISHED SIZE
6 months

FINISHED GARMENT MEASUREMENT
19-inch chest

MATERIALS

- Red Heart Baby Fingering Yarn Art. E254 by Coats & Clark: 3 oz. White #1
- 1½ oz. Light Pink #722
- Small amount Pastel Green #680
- C/2.5mm hook or hook size needed to obtain gauge
- Five ¼-inch diameter white pearl beads
- ½-inch button
- 1¼ yds. 1-inch-wide pink satin ribbon for cap

- 1 yd. ¼-inch-wide pink satin ribbon for booties
- Tapestry needle

GAUGE
13 sc = 2 inches; 16 sc rows = 2 inches.

BASIC STITCHES
Ch, sl st, sc, dc

Jacket

BACK YOKE

Row 1: Beg at bottom of Yoke, with pink, ch 53, sc in second ch from hook, sc in each remaining ch across, ch 1, turn. (52 sc)

Rows 2–22: Sc in each sc across, ch 1, turn. (16 sc)

Row 23: For First Shoulder and Yoke Front, sc in each of first 16

sc, ch 1, turn. (16 sc)

Rows 24–34: Sc in each sc across, ch 1, turn, ending at armhole edge.

Row 35: Sc in each sc across to last sc, 2 sc in last sc, ch 1, turn. (17 sc)

Row 36: 2 sc in first sc, sc in each sc across, ch 1, turn. (18 sc)

Rows 37–50: Repeat rows 35 and 36. (32 sc at end of row 50)

Row 51: Sc in each sc across to last 4 sc, ch 2 for buttonhole, skip 2 sc, sc in each of last 2 sc, ch 1, turn.

Row 52: Sc in each sc across, working 2 sc in ch-2 sp, ch 1, turn. (32 sc)

Rows 53–55: Sc in each sc across, ch 1, turn. At end of row 55, do not ch 1; fasten off.

Row 23: For Second Shoulder and Yoke Front, skip next 20 unworked sc on Row 22, join yarn in next sc, ch 1, sc in same st, sc in each of last 15 sc, ch 1, turn. (16 sc)

Rows 24–34: Sc in each sc across, ch 1, turn. (16 sc)

Row 35: 2 sc in first sc, sc in each remaining sc across, ch 1, turn.
(17 sc)

Row 36: Sc in each sc across to last sc, 2 sc in last sc, ch 1, turn.
(18 sc)

Rows 37–50: Repeat rows 35 and 36. (32 sc at end of row 50)

Rows 51–55: Sc in each sc across, ch 1, turn. At end of row 55, do not ch 1, **do not fasten off, do not turn.** (32 sc)

EDGING

Rnd 1: Working over ends of rows, *sc evenly sp across side of Yoke to next corner, 3 sc in corner st*; working in remaining lps across opposite side of foundation ch, sc in each st across bottom back of Yoke to next corner, 3 sc in corner st, repeat from * to *, working the same number of sts on this side of Yoke as on opposite side of Yoke, sc in each st across last row of First Yoke Front to next corner, 3 sc in corner st, sc evenly spaced around

neck opening to lower front corner of Second Yoke Front, 3 sc in corner st, sc in each remaining st across last row of Second Yoke Front to corner, 3 sc in corner st, join with sl st in first sc. Fasten off.

Rnd 2: Join pink in same sc as joining, ch 1; beg in same sc, sc in each sc around, working 3 sc in each corner, join with a sl st in first sc. Fasten off.

BODY

Note: For *shell*, (2 dc, ch 3, sc) in indicated st or sp.

Row 1: Join white in first sc to the left of corner sc on Edging at bottom left front corner of Yoke, ch 3, **shell** (see Note) in same sc, *(skip 2 sc, shell in next sc) across to next corner, adjusting number of sts skipped between shells, if necessary, to end with shell in corner sc**, ch 8 for underarm*, shell in corner sc of Back Yoke, repeat from * to *, shell in corner sc of right Front Yoke, (skip 2 sc, shell in next

sc) across, adjusting number of sts skipped between shells, if necessary, to end with shell in last sc before corner sc, turn.

Row 2: Ch 3, *shell in each shell ch-3 sp across to ch-8 sp, (skip 2 chs, shell in next ch) twice*, repeat from * to *, shell in each remaining shell ch-3 sp across, turn.

Rows 3–18: Ch 3, shell in each shell ch-3 sp across, turn; at end of row 18, fasten off, turn.

Row 19: Join pink in first shell ch-3 sp, ch 3, shell in same sp, shell in each remaining shell ch-3 sp across. Fasten off, turn.

Row 20: With white, repeat row 19.

Rows 21 & 22: Repeat rows 19 and 20.

BORDER

Join pink in corner sc of Edging at bottom left front corner of Yoke, working in turning ch-3 sp at end of each row, shell in each sp to

Continued on page 22

bottom corner, shell in each shell ch-3 sp across bottom of Body to next corner, shell in turning ch-3 sp at end of each row up to bottom of Yoke, sl st in corner sc of Edging at bottom right front corner of Yoke. Fasten off.

SLEEVE (make 2)

Rnd 1: Join white with a sl st in sixth ch from right of ch-8 at either underarm, ch 3, shell in same ch, skip 2 chs, shell in next ch, shell in first unworked sc on side of Yoke, (skip 2 sc, shell in next sc) around armhole opening, adjusting number of sts skipped between shells, if necessary, to end with shell in last sc on armhole opening, shell in third ch of ch-8, join in top of beg ch-3, turn.

Rnds 2–16: Ch 3, shell in each shell ch-3 sp around, join with sl st in top of beg ch-3, turn; at end of Rnd 16, fasten off, turn.

Rnd 17: Join pink in first shell ch-3 sp, ch 3, shell in same sp, shell

in each remaining shell ch-3 sp around, join with a sl st in top of beg ch-3. Fasten off, turn.

Rnd 18: Join white in first shell ch-3 sp, repeat rnd 17.

Rnds 19 & 20: Repeat rnds 17 and 18. At end of Rnd 20, do not fasten off; ch 1, turn.

Rnd 21: (Sc in next ch-3 sp, sc in next dc, skip next dc) around, join with sl st in first sc, ch 1, turn.

Rnds 22–26: Sc in each sc around, join with sl st in first sc, ch 1, turn; at end of rnd 26, fasten off, turn.

Rnd 27: Join pink in same sc as joining, ch 3, shell in same sc, (skip next 2 sc, shell in next sc) around adjusting number of sts skipped between shells, if necessary, to accommodate pattern repeat, join with sl st in top of beg ch-3. Fasten off.

Repeat rnds 1–27 on remaining armhole opening, working same number of shells on rnd 1 as on rnd 1 of first Sleeve.

Cap

CROWN

Note: Do not join rnds unless otherwise stated; mark first st of each rnd with safety pin or other small marker.

Rnd 1: With white, ch 2, 6 sc in second ch from hook. (6 sc)

Rnds 2 & 3: 2 sc in each sc around. (24 sc at end of rnd 3)

Rnd 4: (Sc in each of next 3 sc, 2 sc in next sc) 6 times. (30 sc)

Rnd 5: (Sc in each of next 4 sc, 2 sc in next sc) 6 times. (36 sc)

Rnd 6: (Sc in each of next 8 sc, 2 sc in next sc) 4 times. (40 sc)

Rnd 7: (Sc in each of next 7 sc, 2 sc in next sc) 5 times. (45 sc)

Rnd 8: (Sc in each of next 8 sc, 2 sc in next sc) 5 times. (50 sc)

Rnd 9: (Sc in each of next 9 sc, 2 sc in next sc) 5 times. (55 sc)

Rnd 10: (Sc in each of next 10 sc, 2 sc in next sc) 5 times. (60 sc)

Rnd 11: (Sc in each of next 14 sc, 2 sc in next sc) 4 times, join with sl st in first sc. Fasten off. (64 sc)

Rnd 12: Skip first 32 sc, join pink

in next sc, ch 1, sc in same sc, (2 sc in next sc, sc in each of next 7 sc) 7 times, 2 sc in next sc, sc in each of last 6 sc, join with sl st in first sc. Fasten off. (72 sc)

Rnd 13: Join white in same sc as joining, ch 3, shell in same sc, (skip next sc, shell in next sc) around, join with sl st in top of beg ch-3, turn. (36 shells)

Rnds 14–16: Ch 3, shell in each shell ch-3 sp around, join with sl st in top of beg ch-3, turn; do not fasten off at end of rnd 16; turn. (36 shells)

BRIM

Row 1: Ch 3, shell in each of first 29 shell ch-3 sps, turn. (29 shells)

Rows 2–4: Ch 3, shell in each of first 29 shell ch-3 sps, turn; at end of row 4, fasten off, turn.

Row 5: Join pink in first shell ch-3 sp, ch 3, shell in same sp, shell in each remaining shell ch-3 sp across, Fasten off, turn. (29 shells)

Row 6: Join white in first shell ch-3

sp, repeat row 5. (29 shells)

Rows 7 & 8: Repeat rows 5 and 6. At end of row 8, do not fasten off; do not turn.

BAND

Row 1: Working over ends of rows across bottom of Brim, sc in each ch-3 sp across to unworked shells of Rnd 16 of Crown, (sc in next ch-3 sp, sc in each of next 2 dc) across to bottom of Brim on opposite side, sc in each ch-3 sp across to last row of Brim, ch 1, turn.

Rows 2–7: Sc next 2 sts tog (see *Stitch Guide*)—decrease made—, sc in each sc across to last 2 sc, sc next 2 sts tog, ch 1, turn. At end of row 7, fasten off, turn.

BORDER

Join pink with a sl st in first sc, ch 1, sc in each sc across Band, shell in each shell ch-3 sp across last row of Brim, join with sl st in beg sc. Fasten off.

Bootie (make 2)

Row 1: Beg at bottom of instep, with white, ch 13, sc in second ch from hook, sc in each remaining ch across, ch 1, turn. (12 sc)

Rows 2–12: Sc in each sc across, ch 1, turn.

Rnd 13: Sc in each sc across, ch 28 for ankle opening, join with sl st in first st at opposite end of row. Do not fasten off; do not turn.

SOLE

Note: Do not join rnds unless otherwise stated; mark first st of each rnd with safety pin or other small marker.

Rnd 14: Work 12 sc across side of instep to bottom, sc in each of 12 sts across bottom of instep, work 12 sc across opposite side of instep, sc in each of next 28 chs, join with sl st in first sc. (64 sc)

Rnds 15–18: Sc in each sc around.

Rnd 19: Sc in each of next 11 sc, sc next 2 sts tog, *(sc in each of next 4 sc, sc next 2 sts tog) twice*, sc in each of next 18 sc sc, sc next

Continued on page 24

2 sts tog, repeat from * to *, sc in each of next 7 sc. (58 sc)

Rnds 20–23: Sc in each sc around, working 3 decreases evenly spaced at each end on each rnd, positioning decreases so they do not fall directly above decreases in previous rnd. At end of rnd 23, fasten off, leaving length for finishing. (34 sts at end of rnd 23)

With length left for finishing, sew bottom opening closed.

CUFF

Rnd 1: Join white at center back, ch 1, beg in same st, sc in each remaining lp of ch-28 across to top of instep, work 12 sc across top of instep, sc in each remaining ch of ch-28, join with sl st in first sc. (40 sc)

Rnd 2: Ch 1, sc in same sc as joining, sc in each remaining sc around, join with a sl st in first sc.

Rnd 3: Ch 4 (counts as first dc and first ch-1 sp), (skip next sc, dc in next sc, ch 1) around, join with sl st in third ch of beg ch-4. (20 ch-1 sps)

Rnd 4: Ch 1, sc in same st as joining, sc in each dc and in each sp around, join with sl st in first sc. (40 sc)

Rnd 5: Ch 3 (*counts as first dc throughout*), shell in same sc as joining, (skip 3 sc, shell in next sc) around, join with sl st in top of beg ch-3, turn. (10 shells)

Rnds 6 & 7: Ch 3, shell in each shell ch-3 sp around, join with a sl st in top of beg ch-3, turn. At end of rnd 7, fasten off, turn. (10 shells)

Rnd 8: Join pink in first shell ch-3 sp, ch 3, shell in each shell ch-3 sp around, join with a sl st in top of beg ch-3, fasten off, turn. (10 shells)

Rnd 9: Join white in first shell ch-3 sp, repeat rnd 8. (10 shells)

Rnds 10-12: Repeat rnds 8 and 9, then repeat rnd 8. At end of rnd 12, fasten off. (10 shells)

FLOWER (make 5)

Rnd 1: With pink, ch 5, join to form a ring, (ch 3, dc in third ch from hook, ch 1, sl st in ring) 6 times. Fasten off, leaving length for finishing. (6 petals)

With tapestry needle, weave length left for finishing through sts on back of work, pull tightly to close and fasten securely.

Sew pearl to center of Flower.

LEAF PAIR (make 5)

With green, (ch 7, sl st in second ch from hook, hdc in next ch, dc in each of next 2 chs, hdc in next ch, sl st in next ch) twice. Fasten off.

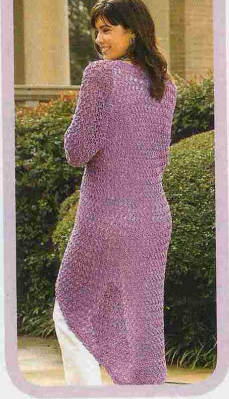
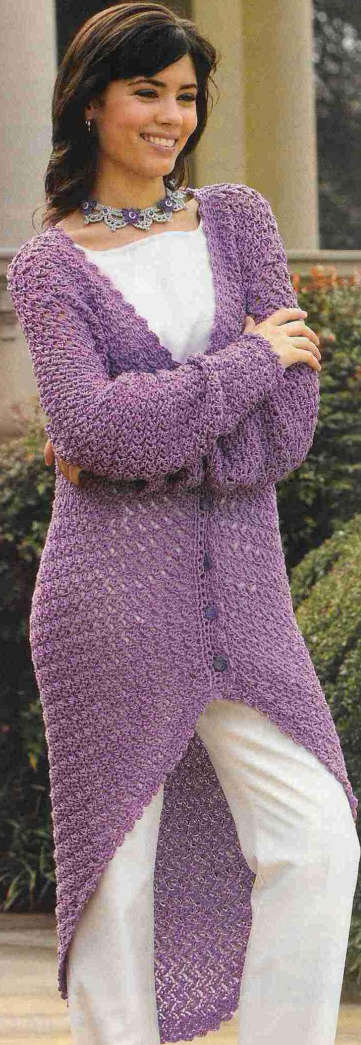
Tack one Leaf Pair to back of each Flower.

FINISHING

Cut 1-inch-wide ribbon into two equal pieces. Make a bow at one end of each piece and sew one bow end to each corner of Cap.

Cut ¼-inch-wide ribbon into two equal pieces. Beg at front, weave one piece of ribbon through rnd 3 of Cuff on each Bootie; tie into bow at front.

Using photo as a guide, sew one flower to top of Cap, one at center top of instep on each bootie, and one at each lower armhole edge on each front Yoke. ••



Amethyst Jacket

DESIGNED BY

BELINDA "BENDY" CARTER

FINISHED SIZES

Instructions given fit 32 to 34-inch bust; changes for 36 to 38-inch, 40 to 42-inch and 44 to 46-inch are in [].

FINISHED GARMENT MEASUREMENT

35 [40, 44, 47] inches

MATERIALS

- 18 [19, 21, 23] (85 yd.) skeins Amethyst #8328 Berroco Cotton Twist or medium (worsted) weight mercerized cotton/rayon blend yarn
- J/6mm hook or hook size needed to obtain gauge
- H/5mm hook
- Six Silver Sparks Purple ¾-inch buttons by JHB International

GAUGE

In pattern stitch with J hook, 25 sts and 29 rows = 10 inches.

BASIC STITCHES

Ch, sl st, sc, dc

Evening Elegance

The classic lines and soft, flowing style of this sophisticated opera-length jacket combine with the glittering beauty of a stunning one-of-a-kind choker to create a fashion-forward ensemble that defines glamour.

NOTE

Jacket is designed to accommodate the stretchability resulting from the overall weight of the coat and the use of a larger hook size to create a soft, draping fabric. The finished width will be approximately 4 inches smaller and finished length will be approximately 14 inches longer than when measuring gauge while working. Working gauge should give a chest measurement of approximately 39 [44, 48, 51] inches in order to have a wearing gauge of 35 [40, 44, 47] inches. Finished length should be 28 [28½, 29, 30] inches in order to have a wearing length of approximately 42 [42½, 43, 43½] inches.

BODY

Row 1: With J hook, ch 6 [18, 28, 36], (sc, dc) in 2nd ch from hook, sk next ch, *(sc, dc) in next ch, sk next ch, repeat from * across to last ch, sc in last ch, turn. (5 sts) [17, 27, 35 sts]

Rows 2-21: Ch 5, (sc, dc) in 2nd ch from hook, sk next ch, (sc, dc)

in next ch, sk next ch, *(sc, dc) in next sc, sk next dc, repeat from * across to last sc, sc in last sc, turn. (85 sts at end of row 20) [97, 107, 115 sts at end of row 20]

Rows 22-27: Ch 3, (sc, dc) in second ch from hook, sk next ch, *(sc, dc) in next sc, sk next dc, repeat from * across to last sc, sc in last sc, turn; at end of row 27, ch 1, turn. (97 sts at end of row 27) [109, 119, 127 sts at end of row 27]

Row 28: *(Sc, dc) in next sc, sk next dc, repeat from * across to last sc, sc in last sc, ch 1, turn.

Repeat row 28 for pattern st until Body measures 20 inches from beg.

FIRST FRONT

Next Row: *(Sc, dc) in next sc, sk next dc) 10 [12, 12, 13] times, sc in next sc, ch 1, turn. (21 sts) [25, 25, 27 sts]

For **armhole and neck shaping**, continue to work in pattern st, dec 1 st at armhole edge 4 [4, 4, 6] times and at the same time, when 1 inch from beg of armhole shaping, dec 1 st at neck edge every other row 8 [10, 10, 10] times. (9

sts at end of last dec row) [11, 11, 11 sts at end of last dec row]

Work even in pattern until armhole measures 8 [8½, 9, 9½] inches from beg, fasten off.

BACK

Sk next 5 [5, 9, 9] unworked sts on last row of Body, with J hook, join in next st, ch 1, (sc, dc) in same st as joining, ((sc, dc) in next sc, sk next dc) 21 [23, 24, 26] times, sc in next sc, ch 1, turn. (45 sts) [49, 51, 55 sts]

Continuing to work in pattern st, dec 1 st at each end of every row 4 [4, 4, 6] times. (37 sts at end of last dec row) [41, 43, 43 sts at end of last dec row]

Work even in pattern until Back has 1 less row than First Front.

For **first shoulder**, ((sc, dc) in next sc, sk next dc) 4 [5, 5, 5] times, sc in next sc. Fasten off, leaving remaining sts unworked. (9 sts) [11, 11, 11 sts]

For **second shoulder**, sk next 19 [19, 21, 21] unworked sts on last row of Back, with J hook, join in next st, ch 1, sc in same st, (sk next dc, [sc, dc] in next sc) 4, [5, 5, 5] times. Fasten off. (9 sts) [11, 11, 11 sts]

SECOND FRONT

Sk next 5 [5, 9, 9] unworked sts on last row of Body, with J hook, join in next st, ch 1, (sc, dc) in same st, ((sc, dc) in next sc, sk next dc) across to last sc, sc in last sc, ch 1, turn. (21 sts) [25, 25, 27 sts]

Repeat instructions for **Armhole and Neck Shaping** for First Front.

SLEEVE (make 2)

Row 1: With J hook, ch 24 [24, 26, 28], (sc, dc) in second ch from hook, sk next ch, *(sc, dc) in next ch, sk next ch, repeat from * across to last ch, sc in last ch, ch 1, turn. (23 sts) [23, 25, 27 sts]

Work in pattern as for Body until Sleeve measures 1 inch from beg, then inc 1 st at end of next and every

Continued on page 28

third row until 33 [35, 37, 39] sts. Work until Sleeve measures 14 [14, 14½, 14½] inches from beg.

Next Row: For **sleeve cap**, continuing to work in pattern, sl st across first 3 [3, 5, 5] sts, ch 1, (sc, dc) in same st as last sl st, ((sc, dc) in next sc, sk next dc) repeat across to last 3 [3, 5, 5] sts, sc in next sc, ch 1, turn. (29 sts) [31, 29, 31] sts.

Continuing to work in pattern, dec 1 st at beg and end of each of next 4 [4, 2, 2] rows, then work even in pattern on 21 [23, 25, 27] sts for 4 [4, 6, 6] rows. Dec 2 sts at beg and end of each of next 3 rows. Fasten off. (9 sts at end of last row) [11, 13, 15 sts at end of last row]

ASSEMBLY

Sew shoulder seam. Sew sleeve in arm opening. Sew sleeve seam.

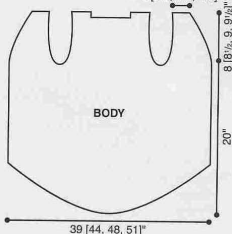
SLEEVE EDGING

Rnd 1: With right side facing, using H hook, join yarn at seam, ch 1; beg in same st, sc evenly sp



7 [7, 8, 8]"

4 [4½, 4½, 4½]"



around, having an even total number of sts, join with sl st in first sc.

Rnd 2: (Ch 3, dc in third ch from hook, sk next sc, sl st in next sc) around, ending with sl st in st at base of beg ch-3. Fasten off.

BUTTON BAND

Row 1: With right side facing, using H hook, join at bottom right corner, ch 1, sc in same st, sc evenly spaced up Right Front, around neck opening and down Left Front, ch 1, turn.

Row 2: Sc in each sc across, ch 1, turn.

Mark 6 buttonholes evenly spaced on Right Front.

Row 3: Sc in each sc to first marker, (ch 2, sk 2 sc, sc to next marker) across to last marker, ch 2, sk 2 sc, sc in each remaining sc across, ch 1, **do not fasten off, do not turn.**

EDGING

Rnd 1: Sc evenly spaced across bottom of jacket, sc in each sp up Right Front, working 2 sc in each ch-2 sp, sc in each sc around neck opening and down Left Front, join in first sc.

Rnd 2: Rep rnd 2 of Sleeve Edging, adjusting number of sts skipped at end of rnd, if necessary, so pattern repeat works out evenly. Fasten off.

Sew buttons to Left Front opposite buttonholes on Right Front.♦♦

Flowers and Jewels Choker

DESIGNED BY CAROL ALEXANDER

FINISHED SIZE

Approximately 12 inches long, excluding ties



MATERIALS

- 31 yds. #001 HL Silver Hi Lustre Kreinik Metallics #16 tapestry braid
- Kreinik Metallics #12 tapestry braid:
- 10 yds. #012 Purple
- 2½ yds. #015 Chartreuse Hi Lustre
- No. 7/1.65 steel hook or hook size needed to obtain gauge
- Nine 6mm round lavender cracked beads
- Nine ¾-inch silver-washed corrugated ring spacers
- Tapestry needle
- White craft glue

GAUGE

With #16 braid, 8 sc = 1 inch; scallop = approximately 1½ inches wide.

With #12 braid, flower = 1 inch in diameter.

BASIC STITCHES

Ch, sl st, sc, hdc, dc, tr.

CHOKER

Foundation Row: With #16 braid, ch 73, sc in 2nd ch from hook, sc in each remaining sc, ch 1, turn. (72 sc)

First Scallop

Row 1: Sc in each of first 9 sts, turn. (9 sc)

Row 2: Ch 8, sk 5 sc, sl st in next sc, ch 1, turn.

Row 3: 13 sc in ch-8 sp, turn. (13 sc)

Row 4: Ch 3, sk first 2 sc, sc in next sc, (ch 3, sk next sc, sc in next sc) 5 times, ch 1, turn. (6 ch-3 sps)

Note: For **picot**, ch 5, sl st in top of last sc made.

Row 5: 3 sc in each of first 3 sps, **picot** (see Note), 3 sc in each of next 3 sps, sl st in same st as last sc of Row 1.

Second Scallop

Row 1: Ch 1, sc in each of next 9 sts on Foundation Row, turn.

Rows 2–5: Rep Rows 2–5 of First Scallop.

Repeat instructions for Second Scallop 6 more times for a total of 8 Scallops. At end of last row of last Scallop, ch 45 for tie, fasten off.

Tack free end of First Scallop to three free sts at beg of Row 1. Join braid at opposite end of foundation row from first tie, ch 45, fasten off.

FLOWER (make 5)

With purple #12 braid, leaving long end at beg, ch 6, join with sl st to form ring; working over long end, (ch 2, dc in ring, ch 1, sl st in top of dc just made, dc, hdc, sl st in ring) 6 times, fasten off. (6 petals)

Pull long beg end to draw opening almost closed, fasten off and secure.

LEAF PAIR (make 5)

With chartreuse #12 braid, (ch 7, sl st in second ch from hook, dc in each of next 2 chs, tr in each of next 2 chs, hdc in last ch) twice. Fasten off.

Tack Leaf Pair to back of Flower.

FINISHING

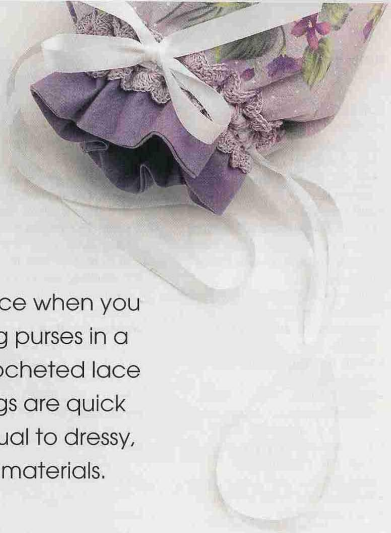
Flatten and smooth Choker and arrange evenly on towel. Cover choker with press cloth and press gently with steam iron. Let dry approximately 15 minutes.

For each jewel, glue a cracked bead to center of ring spacer, let dry. Glue a jewel to center of each Flower, let dry. Using photo as a guide, glue Flowers and remaining jewels to Choker.♦♦

Spring Purses

DESIGNED BY **BRENDA STRATTON**

Enjoy a fun, creative experience when you make our charming drawstring purses in a combination of fabric and crocheted lace accents. These pretty little bags are quick to stitch and can go from casual to dressy, depending on your choice of materials.



Yellow Floral Purse

FINISHED SIZE

7½ inches high x 6 inches wide

MATERIALS

- 1 ball (225 yds. per ball) white #0001 J. & P. Coats Knit-Cro-Sheen Art. A64 by Coats & Clark or size 10 cotton crochet thread
- No. 7/1.65mm steel hook or hook size needed to obtain gauge
- ¼yd. 45-inch wide 100 percent cotton fabric
- 2 yds. ⅜-inch decorative cord for drawstrings
- Matching sewing thread
- Sewing needle (or sewing machine—optional)
- Pinking shears
- Sewing pins
- Dritz Fray Check

GAUGE

Large shell = ⅞ inch.

BASIC STITCHES

Ch, sl st, sc, dc, tr, dtr

PURSE

Cut two 7½-inch square pieces of fabric. With right sides tog, sew ¾-inch in from edge around three sides. Pink edges, turn right side out and press.

Turn ¼-inch at top edge of purse to wrong side, press in place. Repeat. Pin in place, then sew around top opening of purse to finish top edge of fabric.

TOP TRIM

Foundation rnd: Ch 4, tr in fourth ch from hook, (ch 4, tr in top of sp between last tr and ch-4 worked) 31 times, join in first ch of first ch-4. (32 ch-4 sps)

Note: For *large shell*, 7 dc in indicated st or sp.

Lower Edging of Foundation Rnd

Rnd 1: Sl st in next ch of ch-4, (sl st, ch 1, sc) in same ch-4 sp, **large shell** (see Note) in next ch-4 sp, (sc in next ch-4 sp, large shell in next ch-4 sp) around, join with sl st in first sc, fasten off. (16 large shells)

Upper Edging of Foundation Rnd

Rnd 1: Working around opposite edge of foundation rnd, join with a sl st in first sp, ch 1, sc in same sp, ch 4, (sc in next sp, ch 4) around, join with sl st in first sc. (32 sps)

Notes: For *beg V-st*, work (ch 4, dc) in indicated st or sp.

For *V-st*, (dc, ch 1, dc) in indicated st or sp.

For *beginning popcorn (beg pc)*, (ch 3, 4 dc) in indicated st or sp, drop lp from hook, insert hook in top of ch-3, pick up dropped lp, draw through st on hook, ch 1 to secure.

For *popcorn (pc)*, 5 dc in indicated st or sp, drop lp from hook, insert hook in top of first dc, pick up dropped lp, draw through st on hook, ch 1 to secure.

Rnd 2: Sl st in first sp, **beg V-st** (see Notes) in same sp, 4 dc in

next sp, (V-st in next sp, 4 dc in next sp) around, join with sl st in third ch of beg ch-4. (16 V-sts, 16 4-dc groups)

Rnd 3: Sl st into V-st sp, **beg pc** (see Notes) in same sp, *ch 1, dc in each dc of next 4-dc group, ch 1**, **pc** (see Notes) in next V-st sp, repeat from * around, ending last repeat at **, join with sl st in top of beg pc. (16 pc, 16 4-dc groups)

Rnd 4: Beg V-st in same st as joining, *dc in each dc of next 4-dc group**, V-st in next pc, repeat from * around, ending last repeat at **, join in third ch of beg ch-4. (16 V-sts, 16 4-dc groups)

Rnd 5 (beading rnd): Ch 5 (counts as first dtr), dtr (see Stitch Guide) in each dc and each sp around, join with sl st in top of beg ch-5.

Note: For *small shell*, 5 dc in indicated st or sp.

Rnd 6: Ch 1, sc in same st as joining, skip 2 dtr, ***small shell** (see Note) in next dtr**, skip 2 dtr, sc in next dtr, skip 2 dtr, repeat from * around, ending last repeat at **, adjusting number of sts skip at end of rnd to accommodate pattern repeat, join with sl st in first sc. Fasten off.

FINISHING

Pin trim around outside of top edge of purse, positioning foundation rnd over seam line on hem at top edge of purse. Sew in place. Tack top edge of cloth part of purse to wrong side of Upper Edging.

Cut decorative cord in half. Beg at either side, weave one length through 2 dtr at a time on beading rnd; tack 2 ends tog and apply Fray Check. Beg at opposite side, repeat with remaining length of decorative cord. Tie a knot in each looped end of cord.

BOTTOM TRIM

Foundation rnd: Repeat same rnd of Top Trim.

Lower Edging of Foundation Rnd

Rnd 1: Repeat same rnd of Lower Edging of foundation rnd of Top Trim.

Upper Edging of Foundation Rnd

Rnd 1: Working around opposite edge of foundation rnd, join with a sl st in first sp, ch 1, 3 sc in same sp, 4 sc in next sp, (3 sc in next sp, 4 sc in next sp) around, join with sl st in first sc. Fasten off. (112 sc)

FINISHING

Pin Bottom Trim around bottom edge of purse. Sew in place.

Lavender Floral Purse

FINISHED SIZE

10½ inches high and
8½ inches wide

MATERIALS

- 1 ball (150 yds. per ball) lilac #36 J. & P. Coats Knit-Cro-Seen Art. A64 by Coats & Clark or size 10 cotton crochet thread
- No. 5/1.75mm steel hook or hook size needed to obtain gauge
- ¼ yd. 45-inch-wide 100 percent cotton lavender floral fabric to match crochet cotton
- ¼ yd. 45-inch-wide 100 percent cotton lavender fabric to match floral fabric
- 2 yds. ½-inch-wide white satin ribbon for drawstring
- Matching sewing thread
- Sewing needle (or sewing machine)
- Sewing pins
- Safety pin

GAUGE

Rnds 1–4 of Bottom = 5½ inches in diameter.

BASIC STITCHES

Ch, sl st, sc, dc, tr

PURSE

Cut 6¼-inch-diameter circle from lavender fabric for bottom of outer cloth section of purse. Set aside. Cut two 3¼ x 19¼-inch pieces of lavender fabric. Cut one 6¼ x 19¼-inch piece from lavender floral fabric.

With right sides tog, sew one lavender

Continued on page 34



ender piece to floral piece across long edge. Sew remaining lavender piece to opposite side of floral piece across long edge.

With right sides tog, pin narrow edges tog, matching seams. Sew back seam, forming a tube.

Pin round bottom section to one edge of tube and sew in place. Turn right side out. Set aside.

For **lining**, cut one 6½-inch-diameter circle from lavender fabric for bottom. Set aside.

Cut one 10½ x 19½-inch piece from lavender fabric. Fold in half to form a tube. Sew along short edge.

Pin round bottom to one end of tube, sew in place.

To **assemble purse and lining**, turn lining wrong side out. Place Purse inside lining, matching seams, right sides tog. Pin along top edge. Sew top edge of Purse and lining tog, leaving 1½ inches open to turn Purse and lining right side out. Push lining down inside Purse.

BOTTOM TRIM

Rnd 1 (right side): Ch 8, join with

sl st to form ring, ch 4 (*counts as first tr throughout*), 2 tr in ring, ch 5, (3 tr in ring, ch 5) 7 times, join with sl st in top of beg ch-4. (8 3-tr groups)

Rnd 2: Sl st in each of next 2 tr and in next sp, (ch 4, 2 tr, ch 5, 3 tr) in same sp, *ch 5, (3 tr, ch 5, 3 tr) in next sp, repeat from * around, ending with ch 2, dc in top of beg ch-4 to form last ch-5 sp. (16 ch-5 sps)

Rnds 3 & 4: Ch 4, 2 tr in sp just formed, (ch 5, 3 tr in next sp) around, ending with ch 2, dc in top of beg ch-4 to form last ch-5 sp. (16 ch-5 sps)

Rnds 5–7: Ch 4, 2 tr in sp just formed, (ch 6, 3 tr in next sp) around, ending with ch 3, dc in top of beg ch-4 to form last ch-6 sp. (16 ch-6 sps)

Note: For **tr shell**, 9 tr in indicated st.

Rnd 8: Ch 1, sc in sp just formed, *skip next tr, **tr shell** (*see Note*) in next tr**, sc in next sp, repeat from * around, ending last repeat at **, join with sl st in first sc. Fasten off.

Using photo as a guide, sew top of rnd 7 to bottom of Purse at seam line between lavender fabric and lavender floral fabric.

TOP TRIM

Row 1 (beading rnd): Ch 10, dc in fourth ch from hook, ch 4, skip 4 chs, dc in each of last 2 chs, turn. (4 dc, counting last 3 chs of ch-10 as first dc)

Row 2: Ch 3 (*counts as first dc*), dc in next dc, ch 4, dc in next dc, dc in last ch of ch-10, turn. (4 dc)

Rows 3–64: Ch 3, dc in next dc, ch 4, dc in next dc, dc in top of turning ch-3, turn; at end of row 64, sl st tops of sts of last row to remaining lps of foundation ch at base of row 1, fasten off. (64 sps)

EDGING

Note: For **dc shell**, 5 dc in indicated sp.

For **first edge**, join over end st of any sp, ch 1, sc in same sp, **dc shell** (*see Note*) in next sp, *sc in next sp, dc shell in next sp, repeat from * around, join with sl st in first sc, fasten off. (32 dc shells)

For **second edge**, working around opposite edge of beading rnd, join over end st of same sp as first sc, repeat instructions for First Edge.

Using photo as a guide, pin Top Trim to top of Purse over seam between lavender and lavender floral fabric, sew in place.

FINISHING

Cut two 32-inch lengths of ribbon.

Attach safety pin to one end of one length of ribbon and weave through sps of beading rnd, beg and end at same place. Sew ends tog. Cut one end ½-inch from seam. Turn remaining end under, over top of cut end and top stitch.

Repeat for remaining length of ribbon, beg and end on opposite side from first ribbon.

Tie remaining length of ribbon into bow and tack to edging between two looped ends of drawstring.♦♦

Notes: For beginning **treble cluster (beg tr cl)**, ch 4; holding back on hook last lp of each st, 2 tr in same st as ch-4, yo, draw through all 3 lps on hook.

For **treble cluster (tr cl)**, holding back on hook last lp of each st, 3 tr in indicated st or sp, yo, draw through all 4 lps on hook.

For **double crochet picot (dc picot)**, ch 5, dc in 5th ch from hook.

For **single crochet picot (sc picot)**, ch 3, sc in top of last st made.

Rnd 3: Sl st in corner ch-5 sp, (**beg tr cl** (see Notes), {**dc picot** (see Notes), **tr cl** (see Notes)}) 4 times in same sp, *ch 1, sc in next ch-3 sp, **sc picot** (see Notes), sc in next ch-3 sp, ch 1**, (tr cl, {dc picot, tr cl} 3 times) in next sp, repeat from * across to next corner ch-5 sp, ending last repeat at **, (tr cl, {dc picot, tr cl} 4 times) in corner sp, repeat from * around, ending last repeat at **, join with sl st in top of beg tr cl. Fasten off.**

Paper Ribbon Basket

Continued from page 41



Rnds 4 & 5: Repeat rnds 2 and 3. (48 hdc at end of rnd 5)

Rnd 6: Ch 1, hdc in same hdc as joining, hdc in each of next 2 hdc, 2 hdc in next hdc, (hdc in each of next 3 hdc, 2 hdc in next hdc) around, join with sl st in first hdc. (60 hdc)

Rnd 7: Ch 1, hdc in same hdc as join-

ing, hdc in each of next 8 hdc, 2 hdc in next hdc, (hdc in each of next 9 hdc, 2 hdc in next hdc) around, join with sl st in first hdc. Fasten off, leaving long strand for sewing Side Motifs to Basket Bottom. (66 hdc)

ASSEMBLY

With yarn needle, sew side of one Side Motif to Basket Bottom using first 8 sts on Basket Bottom to left of strand, skip 3 hdc on Basket Bottom, (sew one side of next Side Motif to next 8 hdc of Basket Bottom, skip next 3 hdc) around, leaving last 3 hdc on Basket bottom free. Fasten off.

Cut six 24-inch-long strands of white curling ribbon. Using photo as a guide, tie adjoining points of any two Side Motifs tog. Tie into bow. Repeat until all Motifs are joined. With hot-glue gun, attach three leaves at the center of each Side Motif. Glue three lavender flowers, two white flowers, one pink and one yellow flower at center of each set of leaves.**

Birthday Flowers

Continued from page 45



fourth ch from hook, ch 1, turn. (6 dc, counting last 3 chs of ch-4 as first dc)

Row 2: Repeat row 2 of Large Flower. Finish same as for Large Flower, leaving approximately 1-inch length at bottom for wrapping.

TINY FLOWER (make 2)

Row 1: Repeat row 1 of Small Flower. Fasten off. Finish same as for Small Flower.

LARGE BUD

Fold 12-inch length of white in half; tie three knots tog at center. Leave approximately ¾-inch length for wrapping.

SMALL BUD

Fold 12-inch length of white in half; tie two knots tog at center. Leave approximately ¾-inch length for wrapping.

FINISHING

Sew pin back onto top of Pin Backing piece. Cut 8-inch length lightweight floral wire. Fold length in half and tack loop end onto bottom of Pin Backing piece. Center Pin Backing piece on back of Large Leaf with floral wire pointing toward bottom of Leaf and extending approximately 1 inch beyond lower edge of Leaf. Tack wire to back of Leaf.

With sewing needle and white sewing thread, sew ¾-inch pearl bead into center of Large Flower; sew one ¼-inch pearl bead into center of each Medium Flower and each Small Flower; sew one ⅝-inch pearl bead into center of each Tiny Flower.

Beg at base of each Flower, wrap floral wire around length left for finishing at bottom of each Flower. Beg at top of floral spray and using photo as a guide, wrap remaining 4-inch length of floral wire with floral wrap, adding wrapped ends of Buds and Flowers under wrapping for stem as you go. Tack stem with Flowers onto front of Large Leaf.

Fold remaining length of floral wire from back of Large Leaf up over bottom of Large Leaf, fold side of Large Leaf at one side of bottom over wire. Fold bottom of Small Leaf under and tack on top of folded edge of Large Leaf.**

Sunshine Lace Afghan

DESIGNED BY CAROL ALEXANDER

The butterscotch yellow of this openwork afghan is reminiscent of warm summer sunshine. Light as a feather, it's just right to chase away an unexpected chill.

FINISHED SIZE

48 x 57 inches

MATERIALS

- 49 oz. Butterscotch #5263 Red Heart TLC Lustre Art. E510 by Coats & Clark or worsted yarn
- H/5mm hook or hook size needed to obtain gauge

GAUGE

2 shells = approximately
2¼ inches.

BASIC STITCHES

Ch, sl st, sc, dc, tr

AFGHAN

Note: For **shell**, (2 dc, ch 1, 2 dc) in indicated st or sp.

Row 1: Ch 154, sk 3 chs (counts as first dc), **shell** (see Note) in next ch, sk 3 chs, shell in next ch, (ch 3, sk 3 chs, tr in next ch, ch 3, sk 3 chs, shell in next ch, sk 3 chs,



shell in next ch) across to last 2 chs, dc in last ch, turn. (26 shells)

Row 2 (right side): Ch 3 (counts as first dc throughout), (shell in next shell sp) twice, *ch 2, sc in next shell sp) twice, *ch 2, sc in 3rd ch of next ch-3, sc in next tr, sc in first ch of next ch-3, ch 2, (shell in next shell sp) twice,

repeat from * across, dc in top of beg ch-3, turn.

Row 3: Ch 3, (shell in next shell sp) twice, *ch 2, sc in each of next 3 sc, ch 2, (shell in next shell sp) twice, repeat from * across, dc in top of beg ch-3, turn.

Row 4: Ch 3, (shell in next shell sp)

Continued on page 48

FINISHED SIZE

6 inches in diameter
x 19 inches long

MATERIALS

- Red Heart TLC Amore Art. E515 or worsted yarn:
 - 4.5 oz. Vanilla #3103 (A)
 - 4.5 oz. Celery #3625 (B)
 - 4.5 oz. Rose #3710 (C)
 - 4.5 oz. Dark Thyme #3628 (D)
- H/5mm hook or hook size needed to obtain gauge
- G/4.5mm hook
- 6-inch-diameter x 19-inch-long bolster form
- Four 8mm pearl beads
- 3 yds. $\frac{3}{8}$ -inch-wide eggshell double-faced satin ribbon
- $3\frac{1}{2}$ -inch-square piece of cardboard
- Yarn needle
- Sewing needle and eggshell sewing thread

GAUGE

With H hook, 19 sc =
5 inches.

With H hook, 16 sc rows = 4
inches.

BASIC STITCHES

Ch, sl st, sc, hdc, dc

NOTE

To change color in sc, insert hook in next st, yo with working color, draw up a lp, drop working color to wrong side, yo with next color.

CENTER PANEL

Row 1 (right side): With H hook and A, ch 23, sc in second ch from hook, (ch 3, skip 2 chs, sc in next ch) across, turn. (7 ch-3 sps)

Row 2: Ch 3 (counts as first hdc, ch-1), sc in first ch-3 sp, (ch 3, sc in next ch-3 sp) across, ending with ch 1, hdc in last sc, ch 1, turn.

Row 3: Sc in hdc, (ch 3, sc in next ch-3 sp) across, ending with ch 3, sc in second ch of beg ch-3, turn. (7 ch-3 sps)

Repeat rows 2 and 3 until Center

Rose Garden Bolster

DESIGNED BY DARIA MCGUIRE

Add a fresh floral touch to your favorite room with this tasseled rose garden bolster. Worked in luxurious, velvety-soft yarn, this pretty pillow will tempt you to indulge in a quiet, relaxing nap.

Panel measures 19 inches from beg, ending with a row 3. Fasten off.

FIRST END PANEL

Row 1: With right side facing, using H hook and working across either long edge of Center Panel, join B with a sl st at right-hand corner, ch 1; beg in same st, work 74 sc evenly sp across, ch 1, turn. (74 sc)

Rows 2-4: Sc in each sc across, ch 1, turn. At end of row 4, do not ch 1; turn.

Row 5: Ch 3 (counts as first dc), dc in next sc, (ch 2, skip 2 sc, dc in each of next 2 sc) across, ch 1, turn.

Row 6: Sc in each dc and in each ch st across, ch 1, turn.

Rows 7-10: Repeat row 2. At end of row 10, do not ch 1; turn.

Rows 11 & 12: Repeat rows 5 and 6.

Rows 13-19: Repeat row 2. At end of row 19, do not ch 1; fasten off.

SECOND END PANEL

Rows 1-19: Repeat rows 1-19 of First End Panel across remaining long edge of Center Panel.

EDGING

First Side

With right side facing, working over ends of rows of End Panels and last row of Center Panel, using G hook, join B with a sl st at right-hand corner, ch 1, sc in same st, sc evenly spaced across to Center Panel, changing to A in last st on End Panel; sc evenly spaced across to next End Panel, changing to B in last st on Center Panel, sc across remaining End Panel. Fasten off.

Second Side

With right side facing, working over ends of rows of End Panels and remaining lps of foundation ch of Center Panel, repeat instructions same as Edging First Side.

BOLSTER END (make 2)

Note: Do not join rnds unless otherwise stated; mark first st of each rnd with safety pin or other small marker.

Rnd 1 (right side): With H hook and A, ch 4, join with sl st to form a ring, ch 1, 8 sc in ring. (8 sc)

Rnd 2: 2 sc in each sc around. (16 sc)

Rnd 3: (2 sc in next sc, sc in next



sc) around. (24 sc)

Rnds 4-6: Sc in each sc around, inc 8 sc evenly spaced on each rnd and positioning incs so they do not fall directly above incs in previous rnd. (48 sc at end of rnd 6)

Rnd 7: Sc in each sc around.

Rnds 8 & 9: Repeat rnd 4. (64 sc at end of rnd 9)

Rnds 10-12: Repeat rnd 7. At end of rnd 12, join with sl st in first sc, fasten off.

ROSE (make 4)

Rnd 1: With H hook and C, ch 5,

join with sl st to form a ring, ch 1, (sc, 5 dc, sc) 3 times in ring, do not join. (3 petals)

Rnd 2: Working in posts at bases of sts on wrong side of petals, sl st in next sc and in each of next 3 dc, (ch 3, sl st in post at base of center dc of next petal) twice, ch 3, join with sl st in st at base of beg ch-3. (3 ch-3 sps)

Rnd 3: (Sc, hdc, 5 dc, hdc, sc) in each ch-3 sp around, do not join. (3 petals)

Rnd 4: Working in posts at bases of sts on wrong side of petals, sl st in

next sc, in next hdc, and in each of next 3 dc, (ch 5, sl st in post at base of center dc of next petal) twice, ch 5, join with sl st in st at base of beg ch-5. (3 ch-5 sps)

Rnd 5: (Sc, hdc, 7 dc, hdc, sc) in each ch-5 sp around, join with sl st in beg sc. Fasten off.

LEAF (make 5)

Rnd 1: With H hook and D, ch 9, sl st in second ch from hook, *hdc in next ch, dc in each of next 4 chs, hdc in next ch*, (sl st, ch 1, sl st)

Continued on page 40

in last ch; working in remaining lps across opposite side of foundation ch, repeat from * to *, sl st in last ch. Fasten off.

FINISHING

Following diagram, place roses and leaves on Center Panel and sew in place with yarn needle and yarn. Cut ribbon into four equal lengths and weave through ch-2 sps on rows 5 and 11 of each End Panel, securing ends on wrong side with sewing needle and sewing thread.

Note: For **surface ch**, make sl knot, remove hook from lp; holding sl knot and working yarn on wrong side of work at point where surface ch will beg, insert hook from right side to wrong side, pick up sl knot and draw through to right side, (insert hook from right side to wrong side at point where next surface ch will beg, draw up lp to right side and through lp on hook) until design has been completed. Fasten off.

With G hook and A, using diagram as guide, work **surface ch** (see Note) on each End Panel over rows 6-10.

JOINING BOLSTER ENDS

Fold bolster cover in half so borders are touching. With yarn needle and B, beg at outer edge, sew 2 inches of border together on each side (points A and B on diagram).

Rnd 1: With G hook and A, wrong side tog, sc rnd 12 of either Bolster End to opening on either side of Bolster cover, easing fullness, join with sl st in first sc, ch 1, turn.

Rnd 2: (Ch 2, skip next st, sl st in next st) around, ending with ch 2, join with sl st at base of beg ch-2. Fasten off.

Repeat rnds 1 and 2 on remaining opening with remaining Bolster End.

TASSEL (make 2)

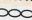
Cut an 8-inch length of C and lay it across top of cardboard square. Wrap C 50 times around cardboard over 8-inch length. Knot 8-inch

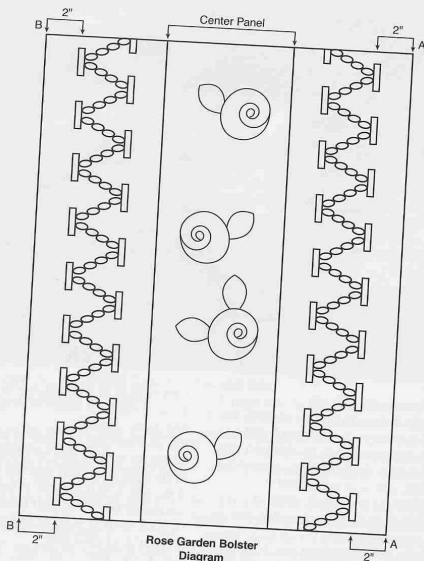
length at top of cardboard tightly. Slide yarn off cardboard. Cut another 8-inch length of C and tie securely $\frac{3}{4}$ inch from top of tassel. Cut through lps at bottom of tassel; trim ends evenly to desired

length. Tie one tassel at center of each Bolster End.

Insert pillow form into Bolster cover and finish sewing opening with yarn needle and matching yarn.♦♦

COLOR KEY	
Rose = C	
Leaves = D	
Center panel = A	
End panels = B	
Bolster ends = A	

STITCH KEY	
	Surface ch



Paper Ribbon Basket

DESIGNED BY **BRENDA STRATTON**

Lend a spark of interest to any setting with this unusual paper basket! Trimmed with bows and dainty spring flowers, it adds a touch of whimsy to any decor.

FINISHED SIZE

6 inches in diameter x
3½ inches high

MATERIALS

- ¾-inch-wide paper curling ribbon:

110 yds. soft lime
4 yds. white

- Small silk flowers:

6 pink
6 yellow
12 white
18 lavender

- 18 silk leaves

- Yarn needle

- Hot-glue gun

- J/6mm hook or hook size needed to obtain gauge

GAUGE

Side Motif = 3½ inches
across center.

BASIC STITCHES

Ch, sl st, hdc

SIDE MOTIF (make 6)

Rnd 1: Ch 4, join with sl st to form ring, ch 1, 10 hdc in ring, join with

sl st in first hdc. (10 hdc)

Rnd 2: Ch 1, (hdc, ch 1, hdc) in same hdc as joining, hdc in next hdc, *(hdc, ch 1, hdc) in next hdc, hdc in next hdc repeat from * around, join with sl st in first hdc. (15 hdc)

Rnd 3: Ch 1, hdc in same hdc as joining, *(hdc, ch 1, hdc) in next ch-1 sp**, hdc in each of next 3 hdc, repeat from * around, ending last repeat at **, hdc in each of next 2 hdc, join with sl st in top of first hdc. (25 hdc)

Rnd 4: Ch 1, hdc in same hdc as joining, hdc in next hdc, *(hdc, ch 1, hdc) in next sp**, hdc in each of next 5 hdc, repeat from * around, ending last repeat at **, hdc in each of last 3 hdc, join with sl st in top of first hdc, fasten off. (35 hdc)

BASKET BOTTOM

Rnd 1: Ch 4, join with sl st to form ring, ch 1, 12 hdc in ring, join in top of first hdc. (12 hdc)

Rnd 2: Ch 1, hdc in same hdc as joining, 2 hdc in next hdc, (hdc in next hdc, 2 hdc in next hdc) around, join with sl st in top of first hdc. (18 hdc)

Rnd 3: Ch 1, hdc in same hdc as joining, hdc in next hdc, 2 hdc in next hdc, (hdc in each of next 2 hdc, 2 hdc in next hdc) around, join with sl st in first hdc. (24 hdc)

Continued on page 49



Birthday Flowers

Sweet Pea and Lily of the Valley



Collect a Crocheted Flower for Every Month of the Year

April—Sweet Pea

The graceful beauty of sweet peas, with their lovely ruffled blossoms and rich, glowing colors, makes them one of the most irresistible of flowers! Their seductive scent is an exquisite perfumed mixture of orange blossoms and honey, and the fragrance of a single bouquet of these sweet-smelling blooms can fill an entire room.

It is believed that a Sicilian monk first harvested sweet pea seeds and sent them to an English schoolmaster in 1699. Only a few colors of the flower existed until the mid-1800s, when Englishman Henry Eckford began hybridizing sweet peas, leading to the wide range of varieties, colors and color patterns that we have today. Sweet peas are often given to say "goodbye" or "thank you for a lovely time."

May—Lily of the Valley

The dainty lily of the valley, from the Latin name *Convallaria*, meaning "valley," is the flower most associated with the month of May because it has been an essential part of May Day celebrations since the Renaissance. On May Day in France, sprigs are worn on lapels to celebrate the holiday, and in Scandinavia, it is considered a good omen to find these "tears" blooming in the woods on a spring day.

In America, lily of the valley flowers are commonly included in bridal bouquets for good luck and are considered the fifth thing that a bride should carry, along with the traditional items that are old, new, borrowed and blue. Popular sentiments associated with lily of the valley are sweetness, humility and happiness, and the blooms are often called the "tears of the Virgin Mary."

DESIGNED BY MARY LAYFIELD

Nothing smells sweeter than the first fragrant blooms of spring. Our birth month flowers for April and May introduce the charming sweet pea and graceful lily of the valley.

Sweet Pea

FINISHED SIZE

2½ inches across

MATERIALS

- Size 20 crochet cotton thread:
Small amount pale pink
Small amount pale green
- No. 9/1.4mm steel hook or hook size needed to obtain gauge
- 1-inch pin back
- Matching sewing thread
- Powdered cosmetic blush (to tint flower)
- 12-inch length lightweight green-covered wire (for tendrils)

GAUGE

Flower = 1¼ inches across widest point.

BASIC STITCHES

Ch, sl st, sc, hdc, dc

FLOWER (make 2)

Upper Half

Rnd 1: With pale pink, ch 5, join with sl st to form ring, ch 3 (counts

as first dc throughout), 13 dc in ring, join in top of beg ch-3. (14 dc)

Row 2: Ch 3, dc in same st as joining, dc in each of next 4 dc, leave remaining 9 dc unworked, turn. (6 dc)

Row 3: Ch 3, dc in first dc, dc in each remaining dc across, ending with 2 dc in top of turning ch-3, turn. (8 dc)

Row 4: Ch 3, dc in each dc across, ch 1, turn.

Row 5: Sc in first dc, skip next dc, hdc in next dc, dc in each of next 2 dc, hdc in next dc, skip next dc, sc in last dc. Fasten off. (6 sts)

Lower Half

Row 1: Join pale pink in next unworked dc on rnd 1, ch 3, dc in same dc as joining, (dc in next dc, 2 dc in next dc) 4 times, turn. (14 dc)

Row 2: Ch 3, (2 dc in next dc, dc in next dc) across, ending with 2 dc in top of turning ch-3, ch 1, turn. (21 dc)

Row 3: Sc in each of first 2 dc, hdc in next dc, 2 dc in next dc, (dc in next dc 2 dc in next dc) 7 times,

hdc in next dc, sc in each of next 2 dc. Fasten off, turn. (29 sts)

Apply small amount blusher to upper part of Lower Half. Cut 8-inch length of pale pink and wrap very tightly around base of row 2 of Upper Half. Tie securely and tack top of Upper Half to top of Lower Half.

PIN BACKING

Row 1: With two strands pale green held tog, ch 15, sc in second ch from hook, sc in each remaining ch across, ch 1, turn. (14 sc)

Rows 2-4: Sc in each sc across, ch 1, turn. At end of row 4, do not ch 1; fasten off.

LEAF CLUSTER

With pale green, ch 20, sc in second ch from hook, *hdc in next ch, dc in each of next 14 chs, hdc in next ch, sc in next ch*, 2 sc in last ch; working in remaining lps across opposite side of foundation ch, sc in next ch, repeat from * to *, join with sl st in first sc for large Leaf, do not fasten off; **ch 5, sc in second ch from hook, dc in next ch, sc in each of next 2 chs, sl st in joining st of large Leaf for small Leaf*; ch 12, sc in second ch from hook, hdc in next ch, dc in each of next 8 chs, sc in last ch, sl st in joining st of large Leaf for medium Leaf, do not fasten off; repeat from ** to **. Fasten off.

Join pale green with a sl st at opposite end of large Leaf, *ch 5, sc in second ch from hook, dc in next ch, sc in each of next 2 chs, sl st in joining st for small Leaf*, ch 12, sc in second ch from hook, hdc in next ch, dc in each of next 8 chs, sc in last ch, sl st in joining st at base of small Leaf for medium Leaf; repeat from * to *. Fasten off.

SINGLE LEAF

With pale green, ch 20, sc in first ch, hdc in next ch, dc in each of next 15 chs, hdc in next ch, sc in last ch, fasten off.

FINISHING

Tack pin back to Pin Backing.

Using photo as a guide, tack two Flowers to top of Leaf Cluster. Tack Pin Backing piece with pin to bottom of Leaf Cluster. Tack Single Leaf to one end of pin backing next to either end of Leaf Cluster.

Cut covered wire into three 4-inch lengths. Wrap each length around handle of crochet hook to curl, leaving approximately 1 inch uncurled on one end of each length. Using photo as a guide, insert straight end of each wire into Leaf Cluster or Pin Backing piece.

Lily of the Valley

FINISHED SIZE

4½ inches long

MATERIALS

- Size 10 crochet cotton thread:
 - Small amount green
 - Small amount white
- No. 7/1.65mm steel hook or hook size needed to obtain gauge
- 1-inch pin back
- Lt. green floral wrap
- 12-inch length lightweight floral wire
- Two ⅜-inch white pearl beads
- Six ¼-inch white pearl beads
- One ⅝-inch white pearl bead
- Tapestry needle
- Sewing needle and white sewing thread

GAUGE

9 tr = 1 inch

BASIC STITCHES

Ch, sl st, sc, hdc, dc, tr

LARGE LEAF

Row 1: Beg at Leaf base, with green, ch 34, hdc in second ch from hook, hdc in each of next 3 chs, dc in each of next 23 chs, hdc in next ch, sc in each of next 4 chs, 3 sc in last ch; working in remaining lps across opposite side of foundation ch, sc in each of next 4 chs, hdc in next ch, dc in each of next 23 chs, hdc in each of next 4 chs, ch 1, turn. (67 sts)

Row 2: Sc in each of first 7 sts, dc in each of next 6 sts, tr in each of next 9 sts, dc in each of next

6 sts, hdc in next st, sc in each of next 4 sts, (hdc, dc, hdc) in next st, sc in each of next 4 sts, hdc in next st, dc in each of next 6 sts, tr in each of next 9 sts, dc in each of next 6 sts, sc in each of next 7 sts. Fasten off. (69 sts)

SMALL LEAF

Beg at Leaf base, with green, ch 23, sc in second ch from hook, sc in each of next 2 chs, hdc in next ch, dc in each of next 2 chs, tr in each of next 10 chs, dc in each of next 2 chs, hdc in next ch, sc in each of next 2 chs, 2 sc in last ch; working in remaining lps across opposite side of foundation ch, sc in each of next 2 chs, hdc in next ch, dc in each of next 2 chs, tr in each of next 10 chs, dc in each of next 2 chs, hdc in next ch, sc in each of last 3 chs. Fasten off. (44 sts)

PIN BACKING

Row 1: With green ch 15, sc in second ch from hook, sc in each remaining ch across, ch 1, turn. (14 sc)

Rows 2-4: Sc in each sc across, ch 1, turn. At end of row 4, do not ch 1; fasten off.

LARGE FLOWER

Row 1: With white, ch 4, 9 dc in fourth ch from hook, ch 1, turn. (10 dc, counting last 3 chs of ch-4 as first dc)

Row 2: Sc in first dc, ch 1, (sc in next dc, ch 1) across, ending with sc in top of beg ch-4. Fasten off, leaving length for finishing.

With tapestry needle, tack side of Flower closed, leaving approximately 1¼-inch length at bottom for wrapping.

MEDIUM FLOWER (make 3)

Row 1: With white, ch 4, 7 dc in fourth ch from hook, ch 1, turn. (8 dc, counting last 3 chs of ch-4 as first dc)

Row 2: Repeat row 2 of Large Flower. Finish same as for Large Flower.

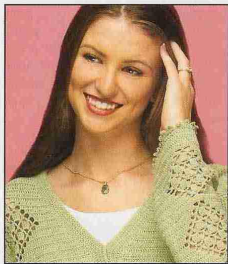
SMALL FLOWER (make 3)

Row 1: With white, ch 4, 5 dc in

Continued on page 49

Spring Green Cardigan

Continued from page 11



Rows 17-46 [19-46, 21-46, 21-46, 23-46]: Work in pattern.

Row 47: For **underarm shaping**, work in pattern to within 13 [14, 16, 21, 21] sts, leave remaining sts unworked, turn.

Rows 48-56: Work in pattern.

Neck Shaping

Rows 57-78 [57-80, 57-82, 57-84, 57-86]: For **Neck Shaping**, continue to work in pattern until five complete openwork diamonds have been worked, dec 1 st at neck edge every row. After five complete openwork diamonds have been worked, work in dc only. (28 sts at end of row 78) [32, 35, 35, 40 sts at end of row 80, 82, 84, 86]

Row 79 [81, 83, 85, 87]: Ch 3, dc in each of next 9 [11, 12, 12, 13] sts, hdc in each of next 9 [10, 11, 11, 13] sts, sc in each of last 9 [10, 11, 11, 13] sts, fasten off.

LEFT FRONT

Rows 1 & 2 [1-4, 1-6, 1-6, 1-8]: Repeat same rows of Right Front.

Row 3 [5, 7, 7, 9]: Ch 3, dc in each of next 27 [31, 34, 38, 41] dc, ch 4, skip 3 dc, sc in next dc, ch 4, skip 3 dc, dc in each of next 28 [31, 35, 38, 42] dc, turn.

Rows 4-46 [6-46, 8-46, 8-46, 10-46]: Repeat same rows of

Right Front. At end of row 46, fasten off, turn.

Row 47: For **underarm shaping**, skip first 13 [14, 16, 21, 21] sts, join in next st, ch 3, continue in pattern across, turn.

Rows 48-56: Repeat same rows of Right Front.

Rows 57-78 [57-80, 57-82, 57-84, 57-86]: For **Neck Shaping**, repeat same rows of Right Front. At end of row 78 [80, 82, 84, 86], ch 1, turn.

Row 79 [81, 83, 85, 87]: Sc in each of first 9 [10, 11, 11, 13] sts, hdc in each of next 9 [10, 11, 11, 13] sts, dc in each of last 10 [12, 13, 13, 14] sts, fasten off.

SLEEVE (make 2)

Row 1: Ch 69, dc in fourth ch from hook, dc in each remaining ch across, turn. (67 dc, counting last 3 chs of foundation ch as first dc)

Note: While following instructions for sleeve, work increases at each end of row beg on row 2 as follows: 1 st at each end of every row 0 [0, 6, 15, 23] times, then on every second row 21 [30, 31, 25, 21] times, then on every third row 9 [3, 0, 0, 0] times for a total of 69 [69, 69, 66, 66] rows, then work 7 [7, 7, 10, 10] rows without increasing for a total of 76 rows and 127 [133, 141, 147, 155] dc at end of last row.

Rows 2-4: Ch 3, dc in each remaining st across, increasing as indicated for size being worked.

Row 5: Ch 3, dc in first st for **sizes large, X-large and 2X-large** only (inc made), dc in each of next 31 [31, 32, 32, 32] sts, ch 4, skip 3 sts, sc in next st, ch 4, skip 3 sts, dc in each of next 32 [32, 33, 33, 33] sts, dc in same st as last st for **sizes large, X-large and 2X-large** only (increase made), turn.

Rows 6-76: Work in openwork diamond pattern as established on Right and Left Fronts, increasing as indicated for size being worked until five openwork diamonds have been completed, then work in dc only. At end of row 76, fasten off.

ASSEMBLY

Sew shoulder seams. Matching center of sleeve top to shoulder seam, set in sleeves. Sew side and sleeve seams.

FRONT BAND

Row 1 (right side): With right side facing, join in bottom corner of Right Front, ch 1, work 2 sc over end st of each row to beg of Neck Shaping, 2 sc in st at beg of neck opening, sc evenly sp around neck opening to top corner of Left Front, 2 sc in corner st, 2 sc over end st of each row to bottom corner of Left Front, ch 1, turn.

Rows 2-4: Sc in each sc across, working 2 sc in each corner sc, ch 1, turn.

Row 5 (buttonhole row): Sc in each of first 6 sc, ch 4, skip 4 sc, (sc in each of next 10 sc, ch 4, skip 4 sc) 7 times, sc in each sc to neck corner, 2 sc in corner sc, sc in each sc to bottom Left Front, working 2 sc in second neck corner sc, ch 1, turn.

Row 6: Sc in each sc and in each ch st across, working 2 sc in each neck corner sc, ch 1, turn.

Rows 7-9: Repeat rows 2-4. At end of row 9, fasten off.

BOTTOM EDGING

With right side facing, join in bottom corner of Left Front in first st to right of Front Band, ch 1, sc in same st, (ch 5, sc in second ch from hook, hdc in next ch, dc in next ch, tr in next ch, skip 2 sts on sweater bottom, sc in next st) across, adjusting number of sts skipped at end of row, if necessary, to end with sc in last st before Front Band. Fasten off.

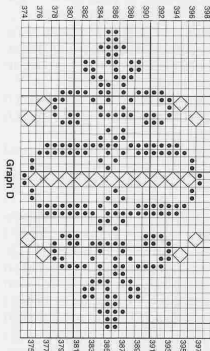
SLEEVE EDGING

With right side facing, join in first st after sleeve seam, work as for Bottom Edging, ending with sl st in first sc. Fasten off.

Sew buttons on Left Front Band opposite buttonholes on Right Front Band.♦♦

Shades of Roses Painted Scarf

Continued from page 17



COLOR KEY
GRAPH D
Rows 374-380: BBA
Rows 381-388: BAA
Rows 389-398: AAA

STITCH KEY
□ Mesh or beg mesh
● Block
◇ Diamond st

Garden Reflections Afghan

Continued from page 19



in indicated st or sp, drop lp from hook, insert hook in first dc, draw dropped lp through.

For **beg 4-dc popcorn (beg 4-dc pc)**, (ch 3, 3 dc) in indicated st or sp, drop lp from hook, insert hook in top of ch-3, draw dropped lp through.

Rnd 1: Form a lp with dk. pink, **beg 3-dc pc** (see Notes) in ring, ch 3, (3-dc pc (see Notes) in ring, ch 3) 5 times, join with sl st in top of beg 3-dc pc, fasten off. (6 ch-3 sps)

Rnd 2: Join lt. pink with a sl st in any ch-3 sp, **beg 4-dc pc** (see Notes) in same sp, ch 2; working in 12 free ch-5 sps around opening between joined Motifs, sc in first free ch-5 sp on one Motif, *ch 2, **4-dc pc** (see Notes) in same ch-3 sp on Filler Motif, ch 2, sc in next free ch-5 sp in opening, ch 2, 4-dc pc in next ch-3 sp on Filler Motif, ch 2, sc in next free ch-5 sp in opening, ch 2, 4-dc pc in same ch-3 sp on Filler Motif, ch 2, sc in next free ch-5 sp in opening, ch 2, 4-dc pc in next ch-3 sp on Filler Motif, ch 2, sc in next free ch-5 sp in opening, ch 2, 4-dc pc in next ch-3 sp on Filler Motif, ch 2, sc in next free ch-5 sp in opening, ch 2, 4-dc pc in next sp on Filler Motif, ch 2, sc in next free ch-5 sp in opening, repeat from * around, ending last repeat at **, join with sl st in top of beg 4-dc pc. Fasten off.

EDGING

Join white with a sl st in first free

ch-5 sp to left of joining between First Motif and Second Motif at left-hand edge of row 1, ch 1, sc in same sp, *(ch 1, {dc, ch 1} 5 times in next free ch-5 sp, sc in next free ch-5 sp) across to next joining between Motifs, ch 3, sc in joining, ch 3**, sc in next free ch-5 sp, repeat from * around, ending last repeat at **, join with sl st in first sc. Fasten off.**

Sunshine Lace Afghan

Continued from page 36



twice, *ch 3, tr in 2nd sc of next 3-sc group, ch 3, (shell in next shell sp) twice, repeat from * across, dc in top of beg ch-3, turn.

Rows 5-91: Repeat rows 2-4 29 more times. Do not fasten off at end of last row; ch 1, turn.

BORDER

Rnd 1: 3 sc in first st (corner made), work 113 more sc evenly sp across to next corner, *3 sc in corner st; working across long edge, 176 more sc evenly sp to next corner*, 3 sc in corner st, 113 more sc evenly sp across remaining lps of foundation ch to next corner, repeat from * to *, join with sl st in first sc. (590 sc)

Rnd 2: Ch 1, sc in same sc as joining, *ch 5, sk center corner sc, sc in next corner sc, (ch 3, sk 2 sc, sc in next sc) across to first corner sc of next corner, repeat from * around, join with sl st in first sc.