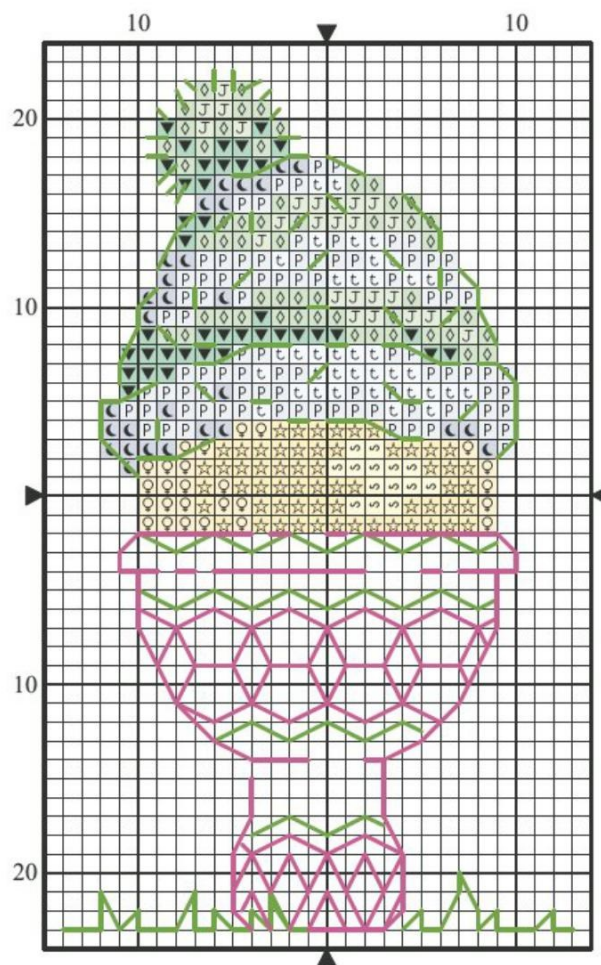
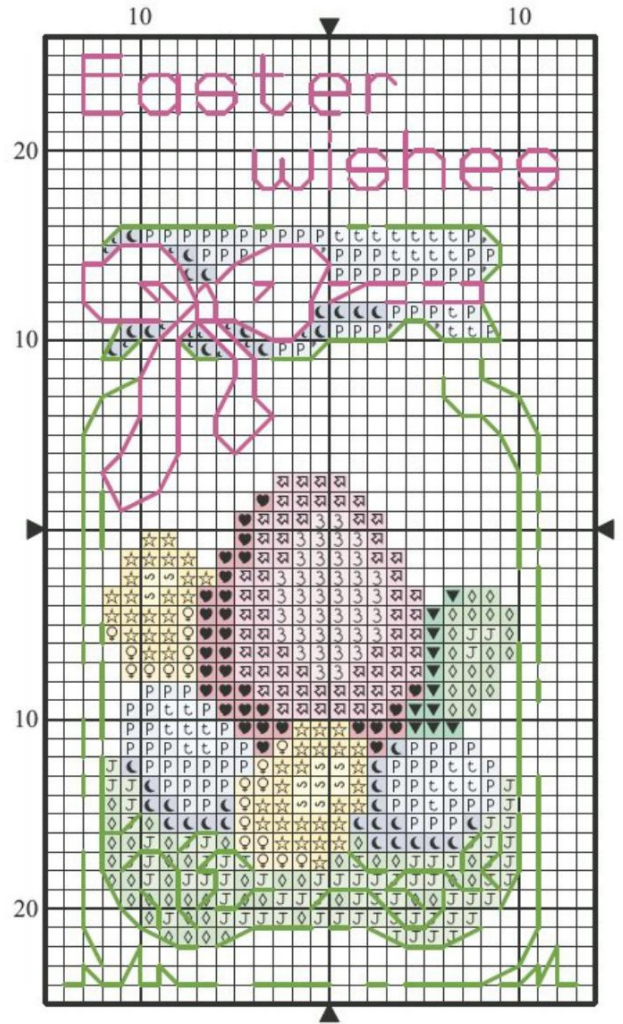
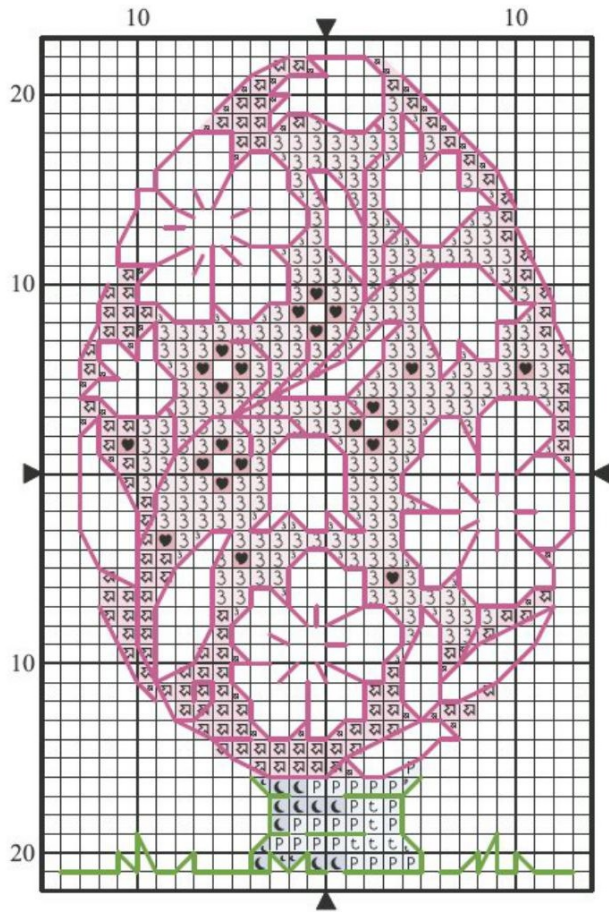


Shopping list

- ✦ Zweigart* 14-count white aida measuring 17x12.5cm (6½x5in) for each design
- ✦ Stranded cotton as listed in the key
- ✦ Size 24 tapestry needle
- ✦ Craft Creations* oblong deckle edge aperture cards (DE08U) in pink (16) and pale green (21)

Thread & fabric cost
Approximately £18





Easter Cards key

✕ Cross stitch in two strands

	DMC	Anchor	Madeira	
t	162	9159	1101	very light blue
☆	744	301	112	yellow
☾	813	140	910	blue
P	827	160	1013	light blue
◇	913	204	1212	mint green
▼	943	188	1203	emerald
J	955	206	1210	light mint green
♥	956	40	506	shocking pink
⊠	957	50	504	lt shocking pink
3	963	73	502	pink
s	3078	292	102	light yellow
♀	3855	311	2513	apricot

✕ Backstitch in one strand

—	702	226	1306	green
—	3731	76	603	rose pink

MAXIMUM STITCH COUNT 51 high x 29 wide

DESIGN AREA 14 HPI (28-count evenweave) – 9.5x5.5cm (3½x2in)

These designs were stitched using DMC stranded cotton

