

Heaven and Earth Designs

Angel of Compassion

(Large Format)

Chart No: HAESF 910

By Michele Sayetta

Artwork by Selina Fenech



Finished Design Size 250 W by 445H (10 WX 17 3/4 H inches on 25ct fabric)

Heaven and Earth Designs

425 9th Street SW

Willmar MN 56201

320-214-7998

www.heavenandearthdesigns.com

Copyright Heaven and Earth Designs

Copyright Selina Fenech

Instructions

The model for Angel of Compassion is stitched over 1 on 25ct, Linen or Evenweave may be used. You may use 1 or 2 strands of floss depending on your preference.

It is recommended that you make working copies and enlarge to view detail and symbols.

We also suggest using a #28 needle when working over 1 on 25ct.

This is a large project that will offer many hours of stitching pleasure.

We thank you for purchasing this design and welcome any questions or comments that you may have.



















Heaven and Earth Designs
507-280-8249

<http://www.heavenandearthdesigns.com>

Pattern Name: Angel of Compassion - Fenech
Designed By: Michele Sayetta
Company: Heaven and Earth Designs
Copyright: 2005
Fabric: Linen or Evenweave 25, White
 250w X 445h Stitches
Size: 25 Count, 10w X 17-3/4h in

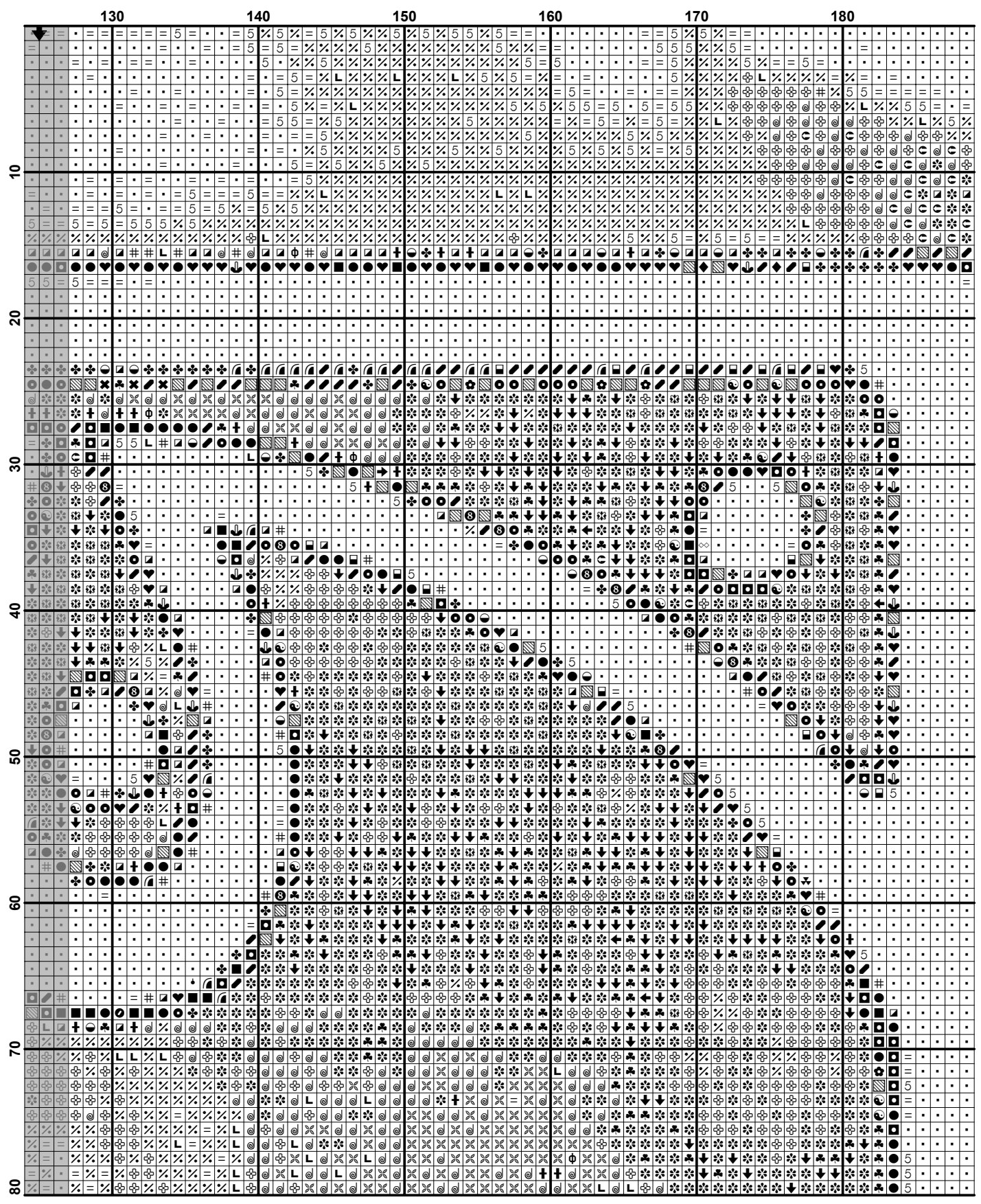
Floss Used for Full Stitches:

Symbol	Strands	Type	Number	Color
□	2	DMC	032	Kreinik #4
◐	2	DMC	152	Shell Pink-MD LT
◑	2	DMC	153	Violet-VY LT
●	2	DMC	154	Grape-VY DK
◕	2	DMC	155	Blue Violet-MD DK
◖	2	DMC	159	Gray Blue-LT
♣	2	DMC	208	Lavender-VY DK
✱	2	DMC	209	Lavender-DK
⊕	2	DMC	210	Lavender-MD
⊘	2	DMC	211	Lavender-LT
✕	2	DMC	223	Shell Pink-LT
⊗	2	DMC	224	Shell Pink-VY LT
■	2	DMC	310	Black
◐	2	DMC	333	Blue Violet-VY DK
✱	2	DMC	340	Blue Violet-MD
⊗	2	DMC	353	Peach
⊕	2	DMC	407	Desert Sand-DK
♣	2	DMC	451	Shell Gray-DK
#	2	DMC	453	Shell Gray-LT
◐	2	DMC	550	Violet-VY DK
@	2	DMC	554	Violet-LT
◐	2	DMC	645	Beaver Gray-VY DK
5	2	DMC	762	Pearl Gray-VY LT
◕	2	DMC	779	Cocoa-DK
✱	2	DMC	791	Cornflower Blue-VY DK
⊗	2	DMC	800	Delft Blue-Pale
=	2	DMC	819	Baby Pink-LT
◐	2	DMC	820	Royal Blue-VY DK
⊗	2	DMC	823	Navy Blue-DK
◐	2	DMC	838	Beige Brown-VY DK
✕	2	DMC	917	Plum-MD
◐	2	DMC	939	Navy Blue-VY DK

Symbol	Strands	Type	Number	Color
	∞	2	DMC 948	Peach-VYLT
	T	2	DMC 951	Tawny-LT
	✘	2	DMC 3023	Brown Gray-LT
	◻	2	DMC 3042	Antique Violet-LT
	➔	2	DMC 3607	Plum-LT
	✘	2	DMC 3609	Plum-ULLT
	•	2	DMC 3713	Salmon-VYLT
	φ	2	DMC 3727	Antique Mauve-LT
	☞	2	DMC 3740	Antique Violet-DK
	←	2	DMC 3746	Blue Violet-DK
	⊥	2	DMC 3779	Terra Cotta-ULVYLT
	◆	2	DMC 3787	Brown Gray-DK
	♥	2	DMC 3799	Pewter Gray-VYDK
	▨	2	DMC 3834	Grape-DK
	†	2	DMC 3836	Grape-LT
	↑	2	DMC 3838	Lavender Blue-DK
	☪	2	DMC 3860	Cocoa
	◉	2	DMC 3861	Cocoa-LT

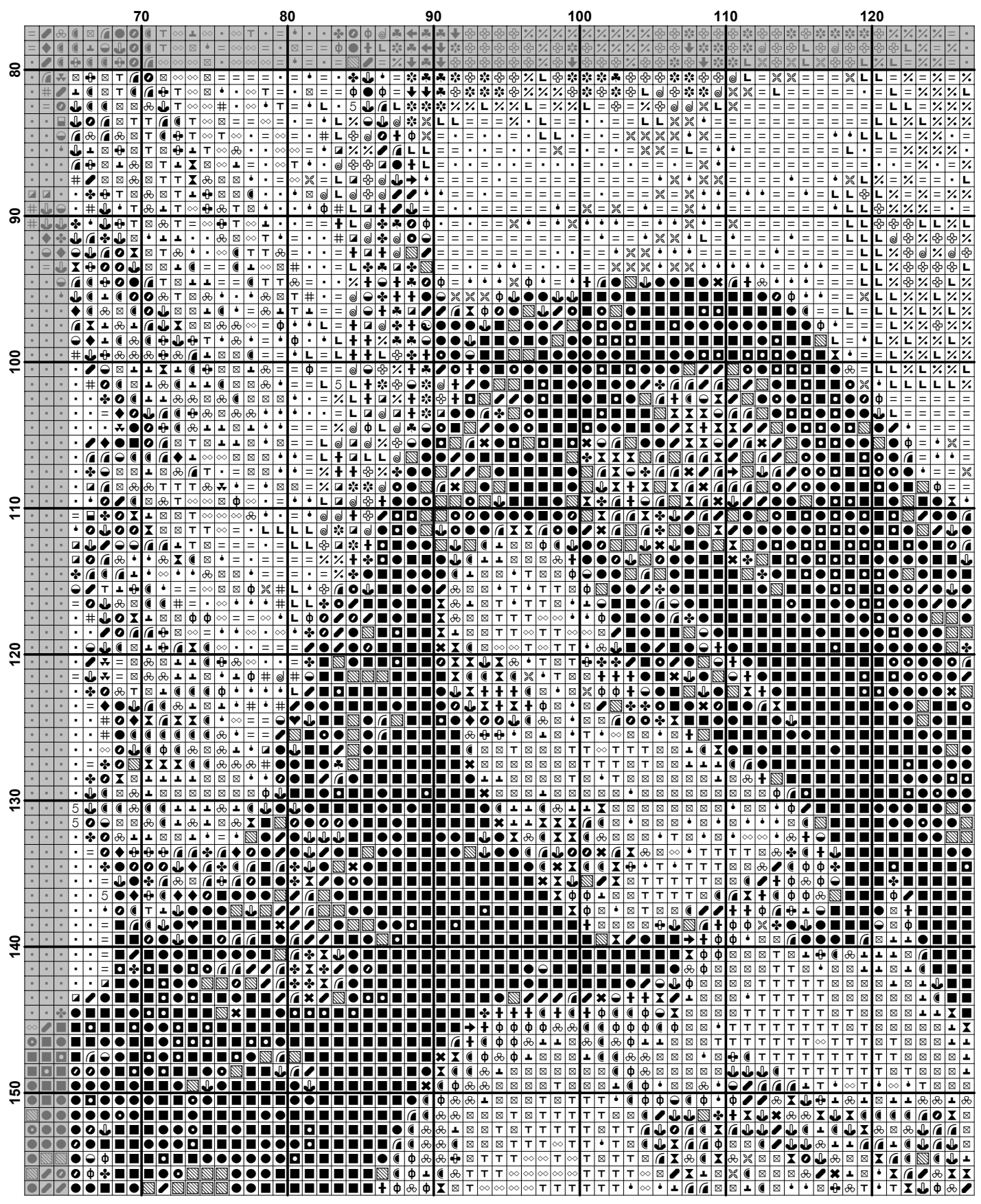
	10	20	30	40	50	60
10	•	•	•	•	•	•
20	•	•	•	•	•	•
30	•	•	•	•	•	•
40	•	•	•	•	•	•
50	•	•	•	•	•	•
60	•	•	•	•	•	•
70	•	•	•	•	•	•
80	•	•	•	•	•	•

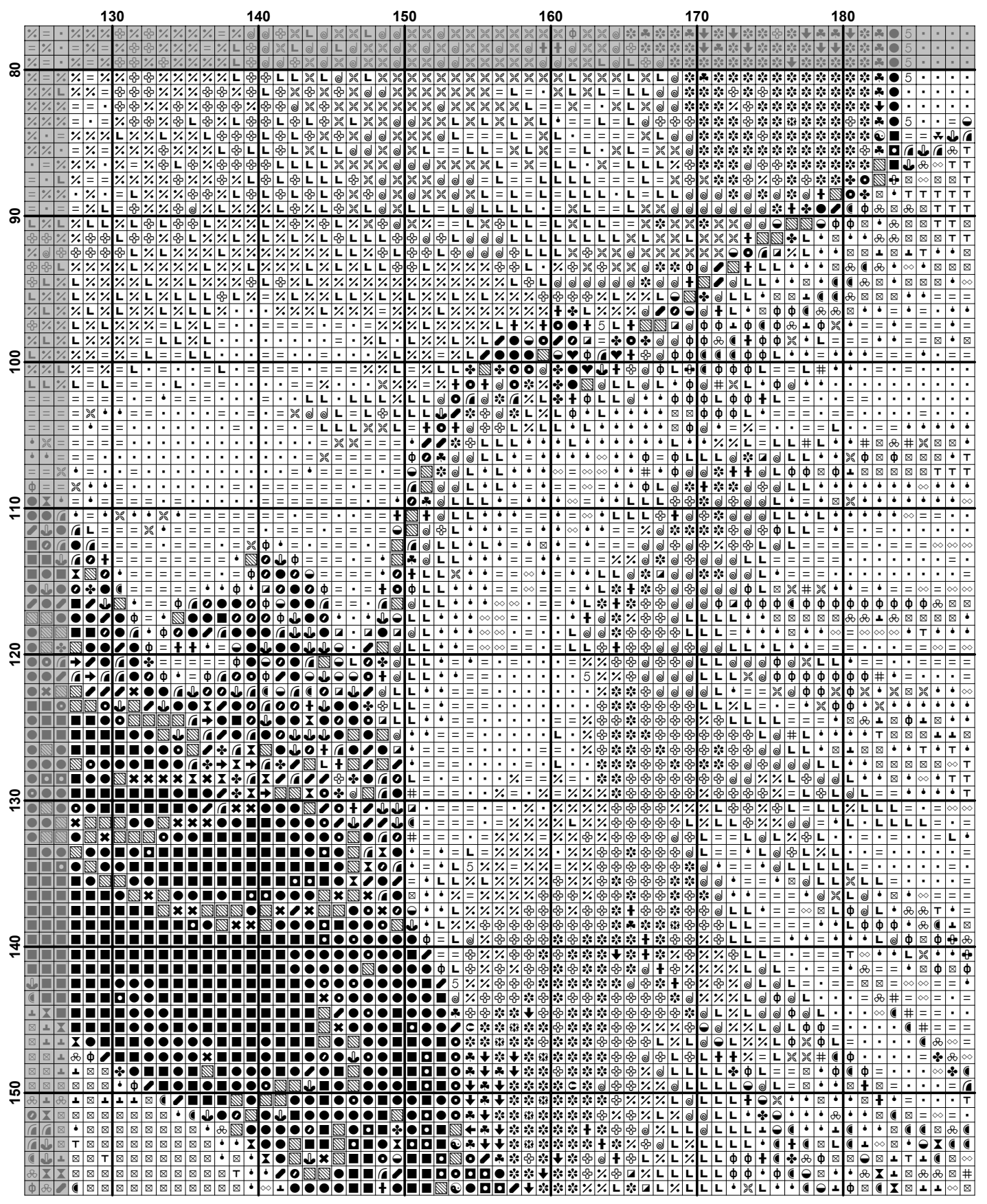
	70	80	90	100	110	120
10
20
30
40
50
60
70
80



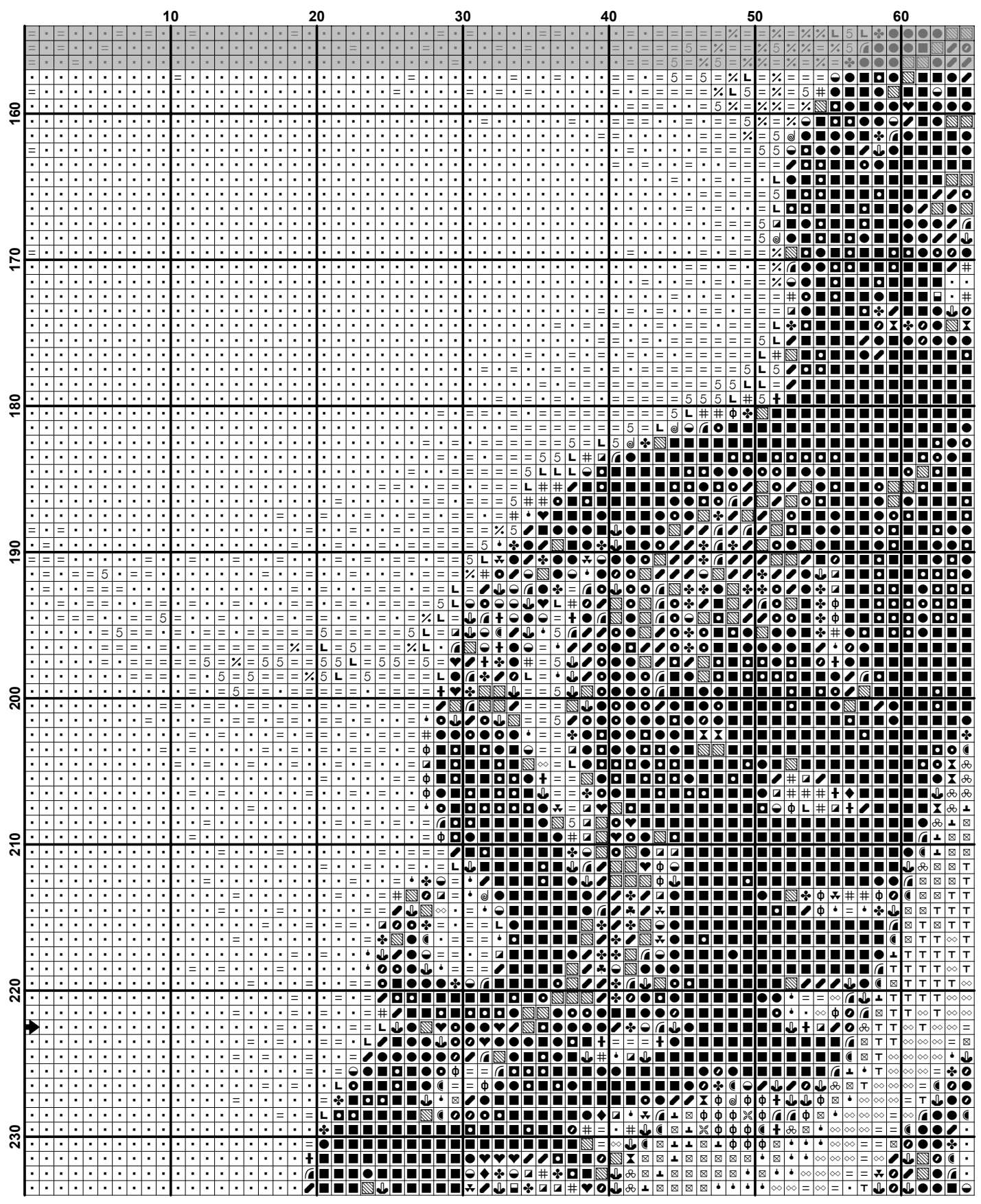
	190	200	210	220	230	240	250
10
20
30
40
50
60
70
80

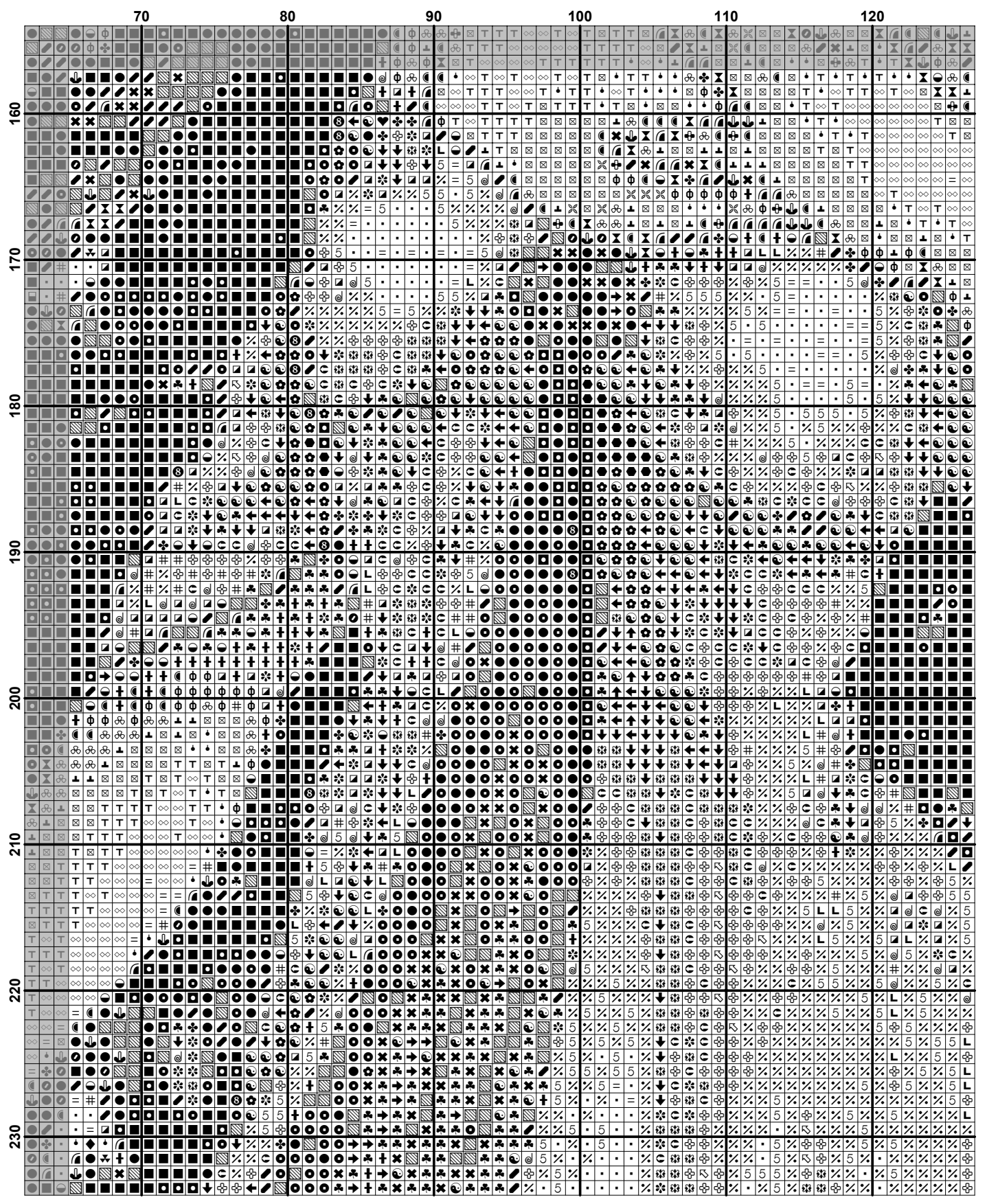
	10	20	30	40	50	60
80
90
100
110
120
130
140
150

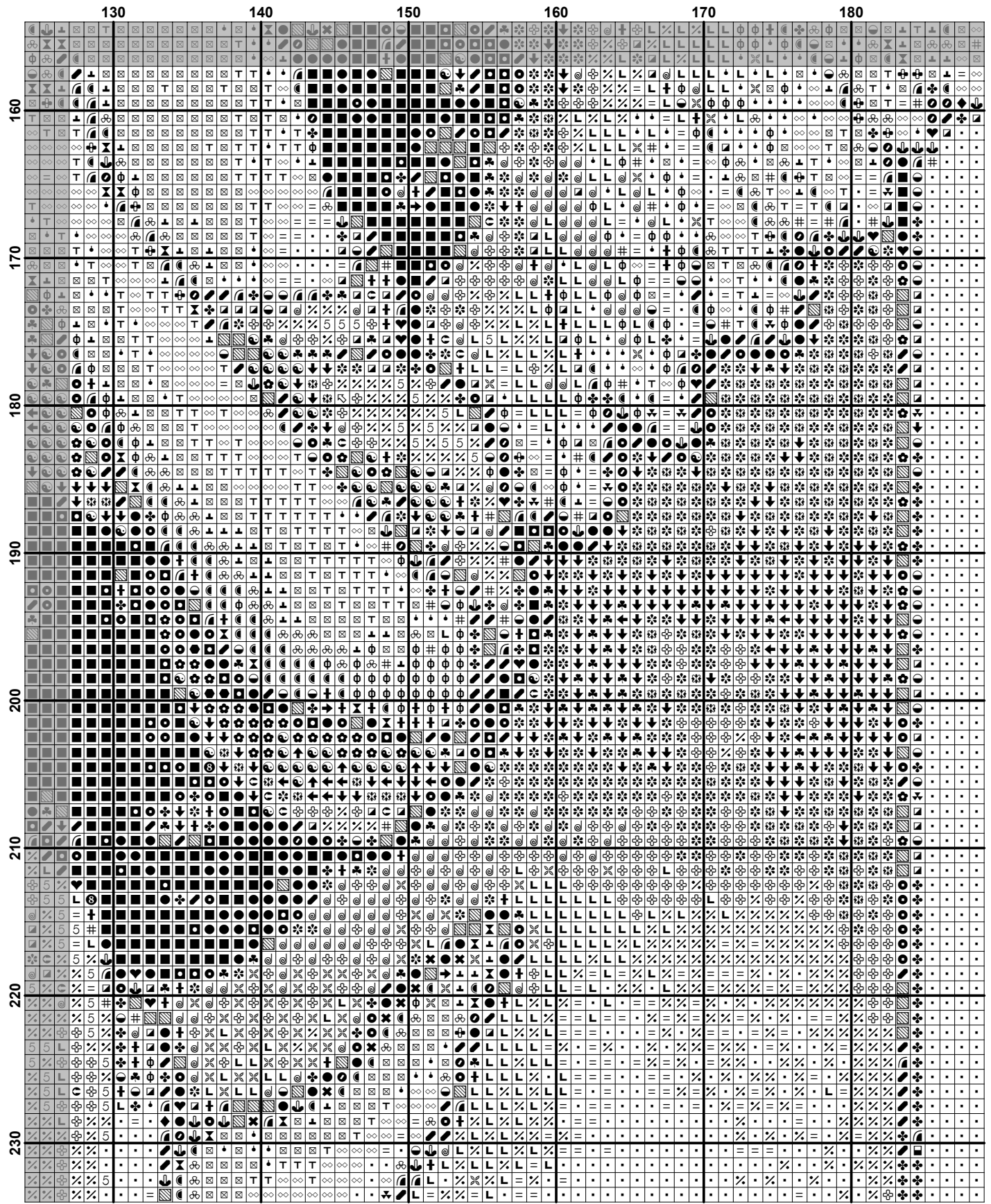




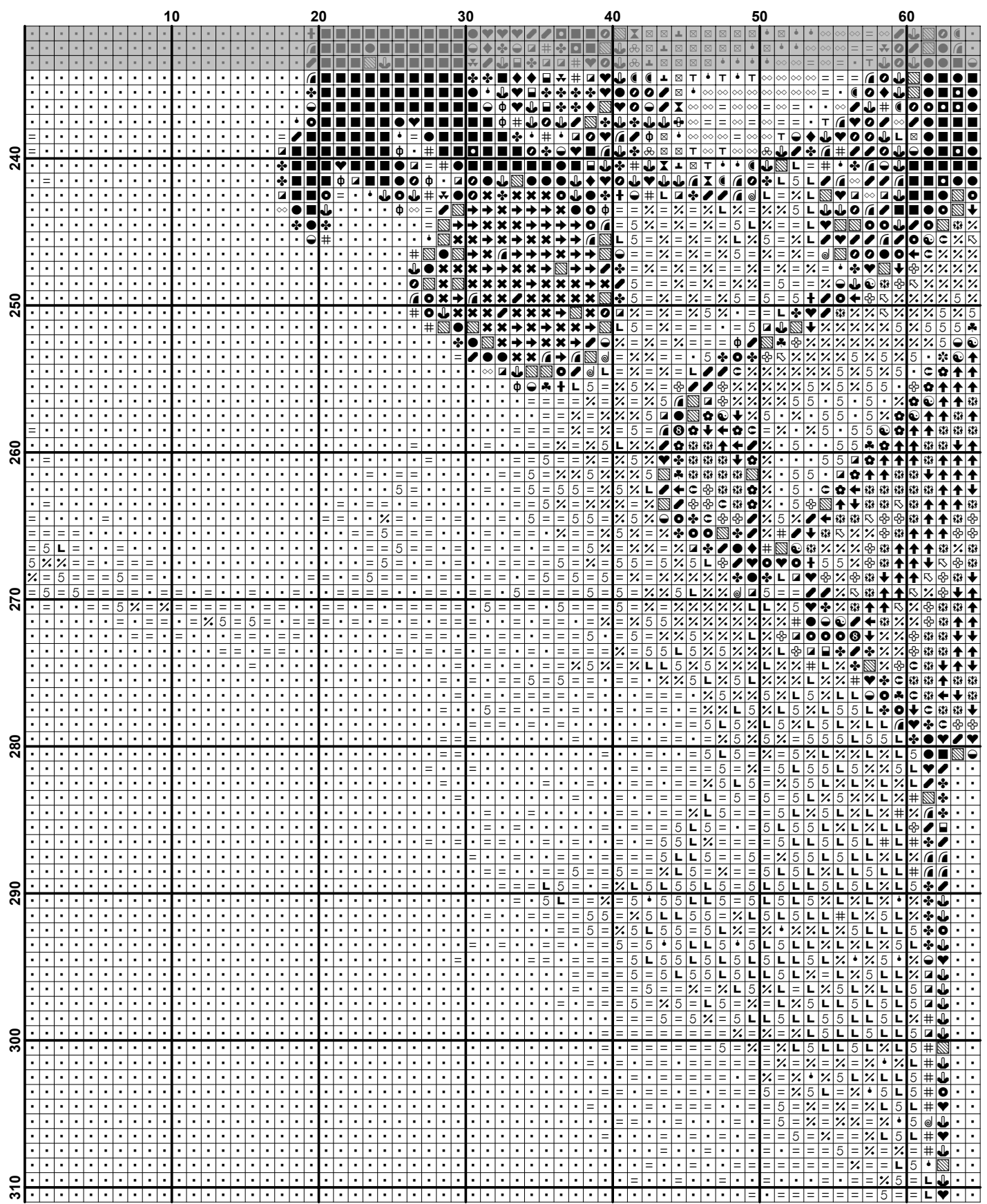
	190	200	210	220	230	240	250
80
90
100
110
120
130
140
150

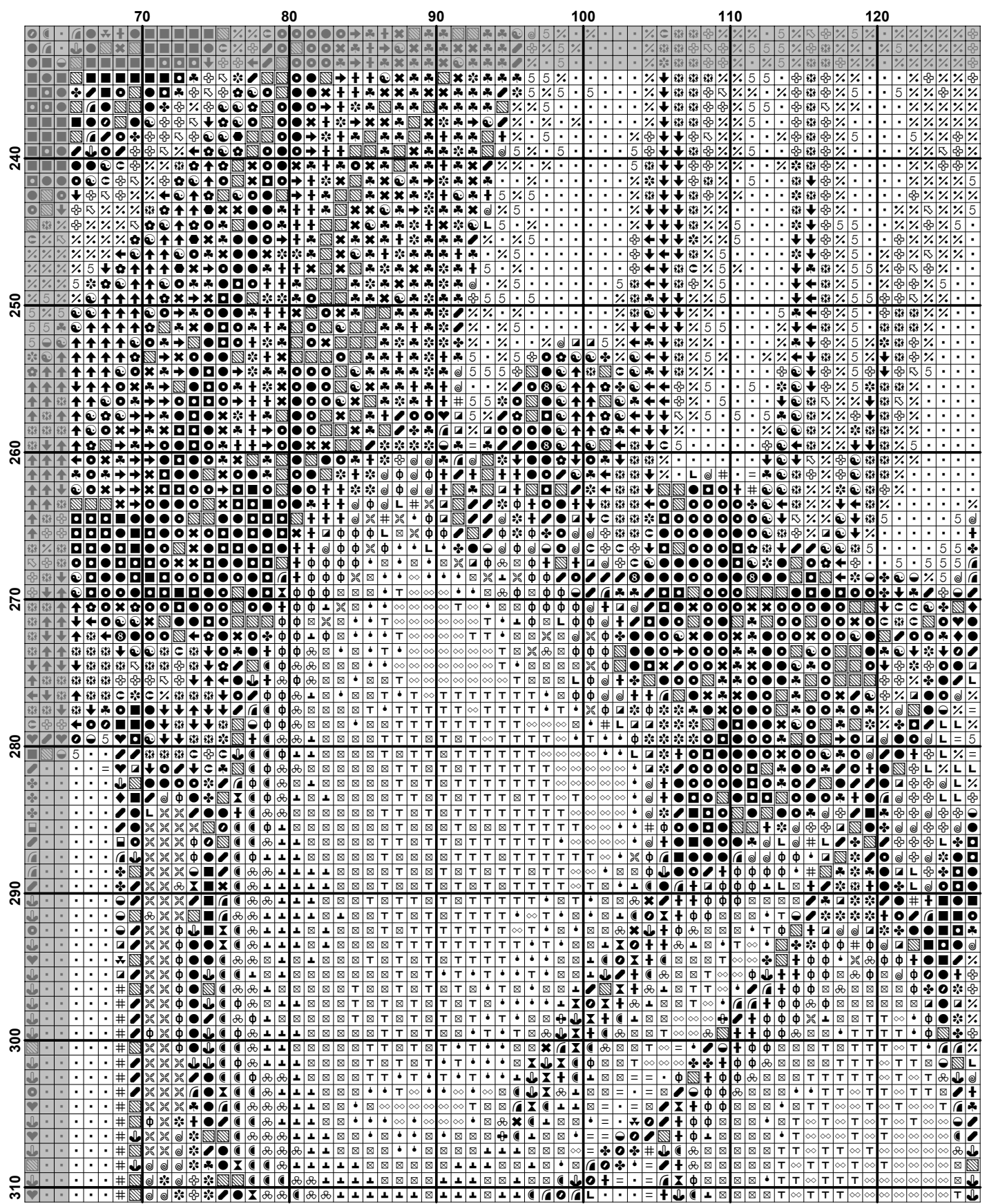


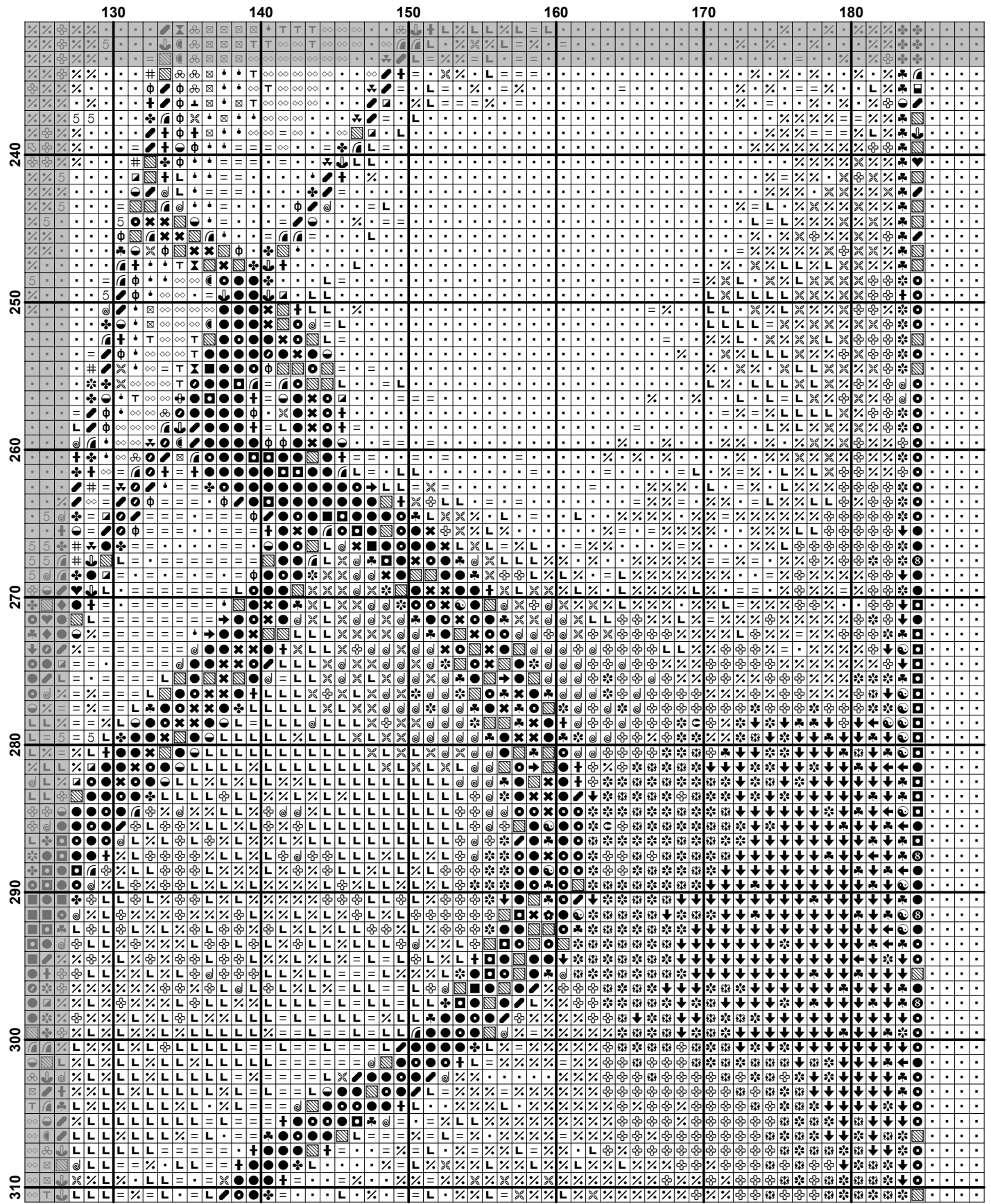




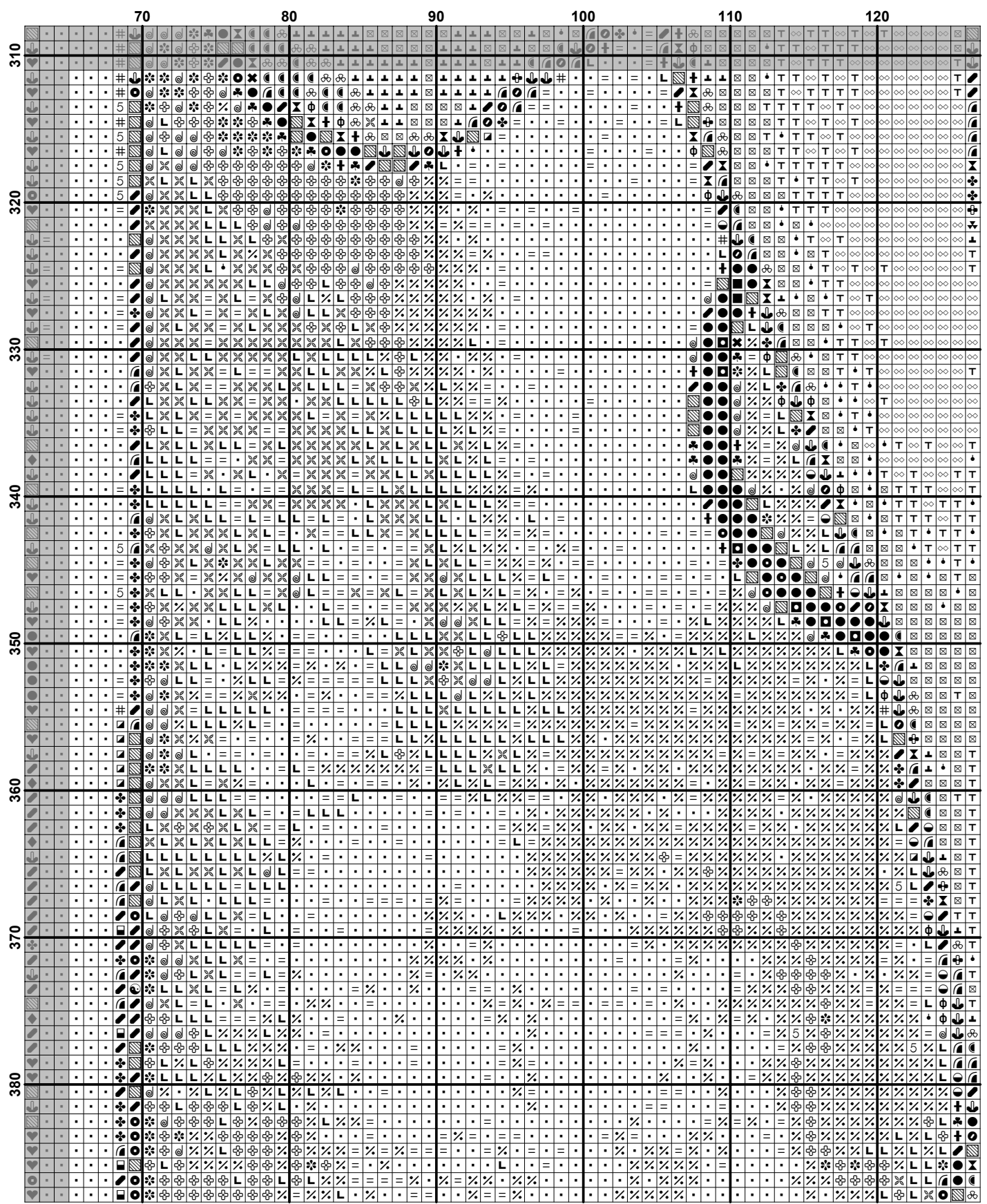
	190	200	210	220	230	240	250
160
170
180
190
200
210
220
230







	190	200	210	220	230	240	250
240
250
260
270
280
290
300
310



	130	140	150	160	170	180
310
320
330
340
350
360
370
380

	190	200	210	220	230	240	250
310
320
330
340
350
360
370
380

	70	80	90	100	110	120
390
400
410
420
430
440

