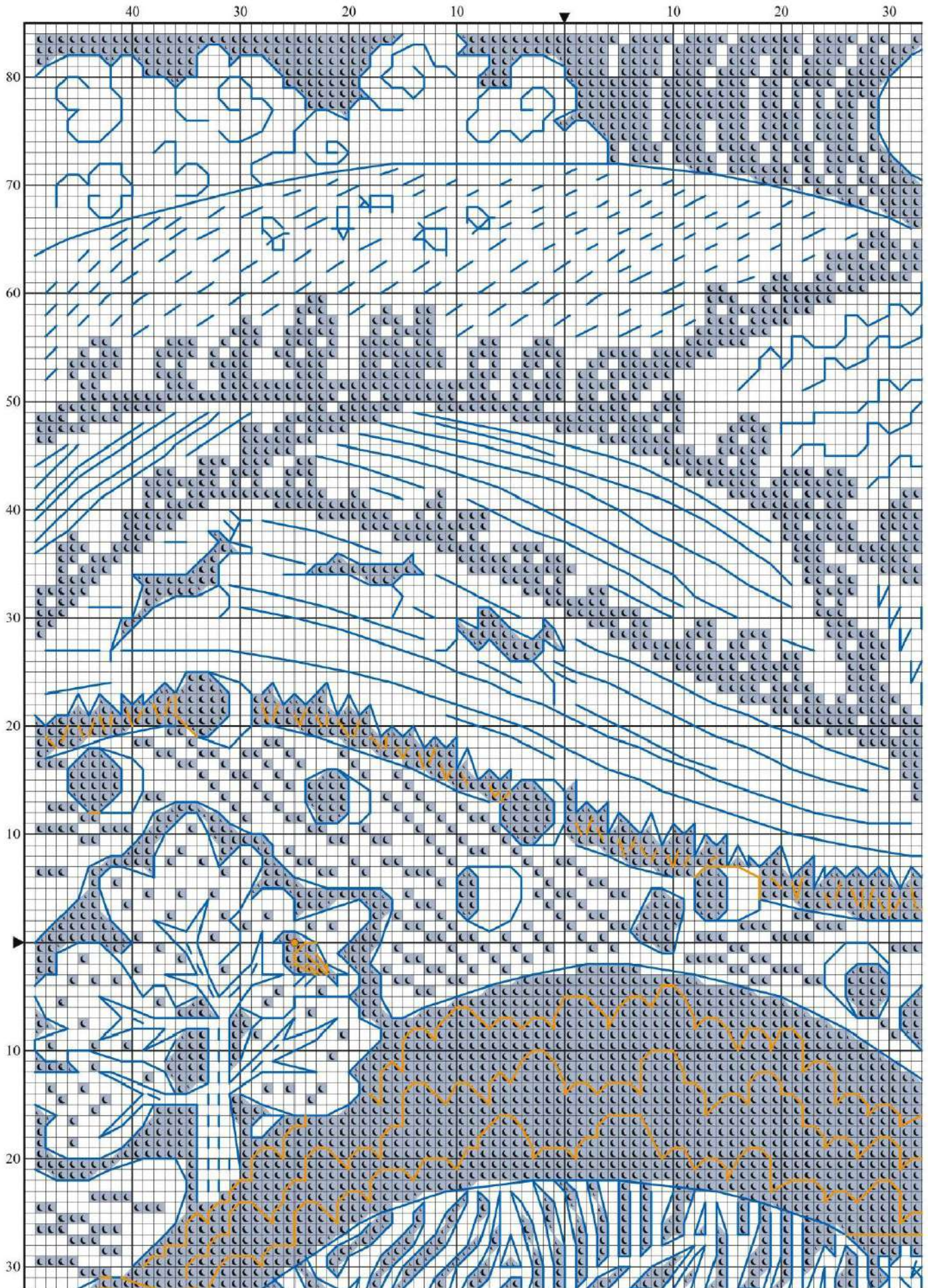


LINOCUT-
STYLE
SCENE

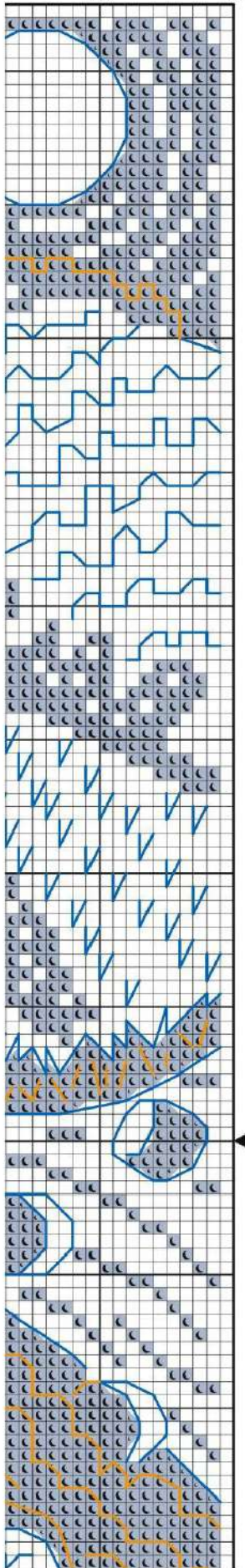


∞
The perfect gift
for a nature lover
or countryside
dweller - they'll
love all the
amazing details





Linocut Landscape chart (top left)



Linocut Landscape chart (top right)

“ Leaving areas of the fabric unstitched as part of the design is such a clever idea. Try evenweave instead of aida for an even prettier finish. ”



HANNAH, CHARTING ASSISTANT

Project pack

If you would like to stitch 'Linocut Landscape', Lakeside Needlecraft is providing a materials pack with the fabric, threads and any other accessories you need. Visit www.lakesideneedlecraft.co.uk to order your project pack and get stitching right away!



Shopping list

- ✗ Zweigart* 14-count white aida measuring 40x28cm (15¾x11in)
- ✗ Stranded cotton as listed in the key
- ✗ Size 24 tapestry needle
- ✗ 21cm Trimits Hanging Magnetic Craft Frame (GBTN005-MED) from Maries Cross Stitch*
- ✗ Backing fabric of your choice from local stores

Thread & fabric cost
Approximately £16

*For stockists see page 90

Linocut Landscape key

✗ Cross stitch in two strands

	DMC	Anchor	Madeira	
	161	122	910	blue

✗ Backstitch in one strand

	161	122	910	blue
	746	275	2511	yellow

✗ French knots in one strand

	746	275	2511	yellow
--	-----	-----	------	--------

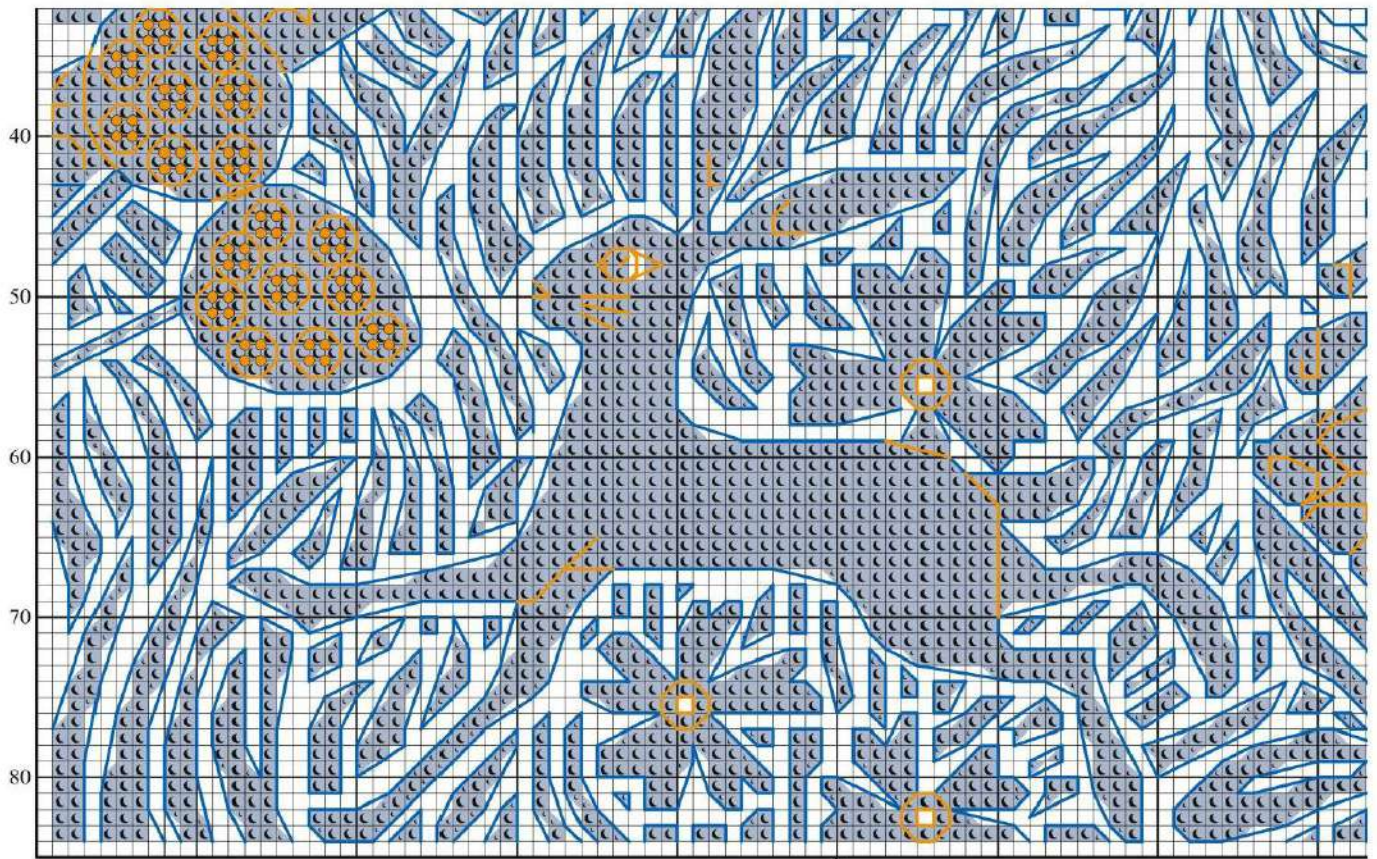
STITCH COUNT 168 high x 98 wide

DESIGN AREA 14 HPI (28-count evenweave)
– 30.5x18cm (12x7in)

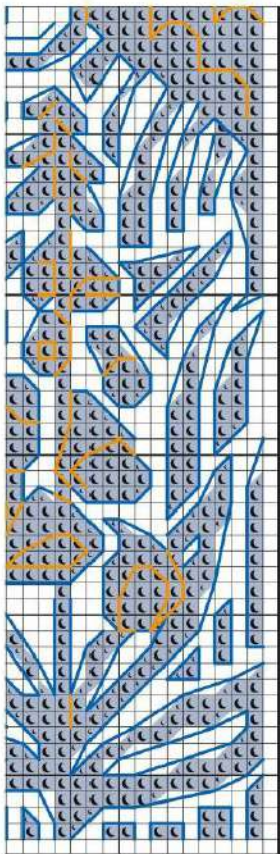
SKEINS NEEDED 6x161 (blue)

STITCHED BY Lisa Draycott

This design was stitched using DMC stranded cotton



Linocut Landscape chart (bottom left)



Linocut Landscape chart (bottom right)



Caroline READER PANEL

“This arty stitch has really caught my interest. I enjoy trying new stitches and this would be a new challenge for me. I love how it’s finished too, I’ve never used a magnetic frame before, they look so modern.”

TOP TIP
 Stitch individual motifs from this design, such as the hare or tree, to make matching cards or tags

