

Mambo Jumbo Bandana

By Amina Ali



All rights reserved

Pattern "Mambo Jumbo Bandana" is an intellectual property of Milena Krzemińska (Amina Ali). Pattern is designed for personal use only. Copying, sharing, releasing or any other commercial use without author's permission is prohibited. Violation of this copyright can result with punishment by the international law.

Dimensions:

Length: 130 cm

Width in the widest point: 38 cm

Yarn:

Drops Flora (210 m per 50 g) – 1,5 skein/320 m

Drops Kid Silk (210 m per 50 g – 1,5 skein/320 m

Both yarns are held together and used in the pattern.

Needles:

3,75 mm circular needles (80 cm)

Gauge:

23 sts and 27 rows in 10 cm with texture pattern with needle size 3,75 mm.

Other materials:

Crochet hook size 2,5 mm, scissors, tapestry needle.

Used techniques:

Stockinette stitch – knit on the RS, purl on the WS.

Ribbed stitch – (knit 1, purl 1) on the RS, (purl 1, knit 1) on the WS.

Nupp - Switch to a crochet hook. Insert it into the next stitch and (pull up a loop, yarn over hook) x3, pull up a loop = 7 loops on the hook. Yarn over hook, pull through all 7 loops; chain 1. Insert hook into stitch under nupp, yarn over hook, pull through both loops. Transfer completed nupp to right needle.

Simple eyelet – yarn over, slip 1 stitch knitwise, knit the second stitch, pull the slipped stitch over the second knitted stitch.

M1L – Insert left needle under the strand running between two stitches from the front, knit through the back loop.

M1LP - Insert left needle under the strand running between two stitches from the front, purl through the back loop.

About the pattern:

Mambo Jumbo Bandana is a simple shaped triangle bandana with rich and simple stitch texture. The pattern is charted, so the work with pattern can be easier.

Abbreviations:

k – knit

p – purl

k2 tog – knit 2 together

p2 tog – purl two together

M1L – make one left, knit

M1LP – make one left, purl

Sl 1 wyif – slip one stitch purlwise with yarn in front

CO – cast on

BO – bind off

RS – right side of your work

WS – wrong side of your work

St – stitch

Sts - stitches

NOTE: *All first and last stitches on RS rows are knitted, while all first and last stitches on WS rows are slipped purlwise with yarn held in front. Those stitches appear in charts, so you won't be lost.*

Mambo Jumbo Bandana Instruction:

CO 3 sts.

Work **RO** as follow:

RO (WS): p all 3 sts

Now work **Chart A, B, C and D** one after another.

After completing all charts, bind off all sts.

Finishing:

Weave all ends. Block your bandana in cool water with wool and silk detergent for 30 min. Rinse the water from bandana using the towel. Dry flat.

Enjoy your Mambo Jumbo Bandana!

I hope you like the pattern.

Thanks for choosing my pattern!

I would be very grateful if you will tag me on your Instagram posts
@aminaalihandmade and use hashtag **#mambojumbobandana**

Chart A

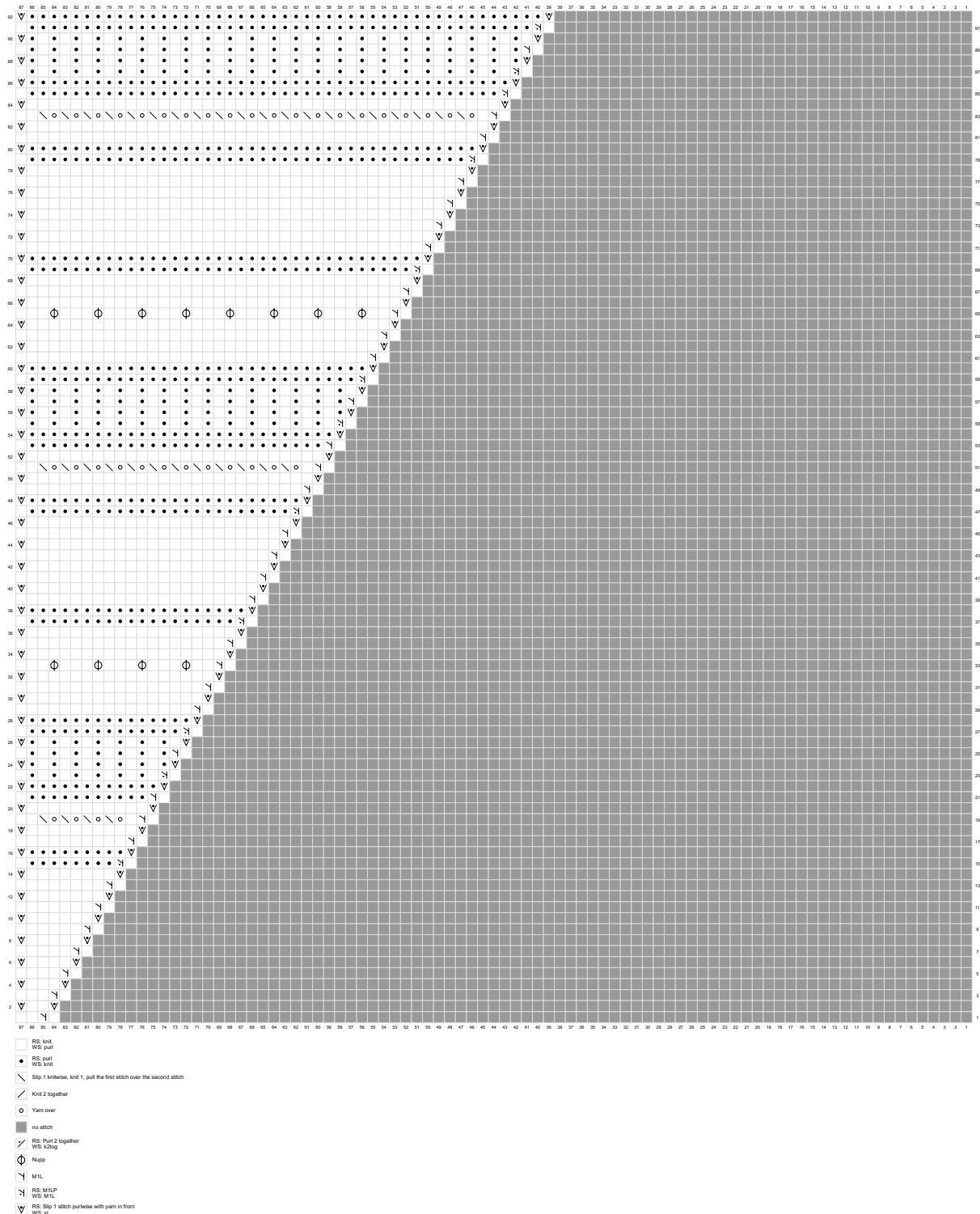


Chart B

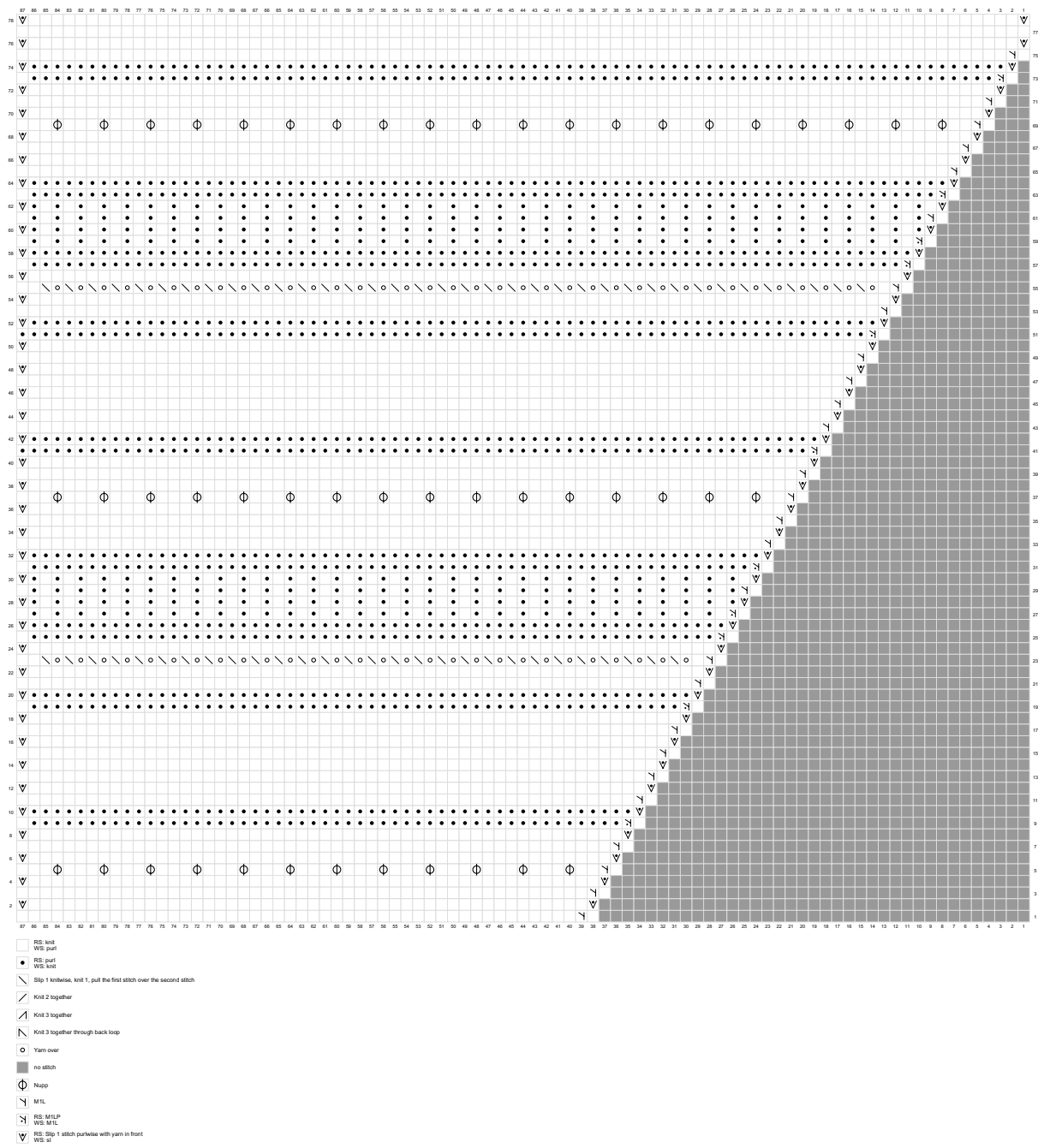


Chart C

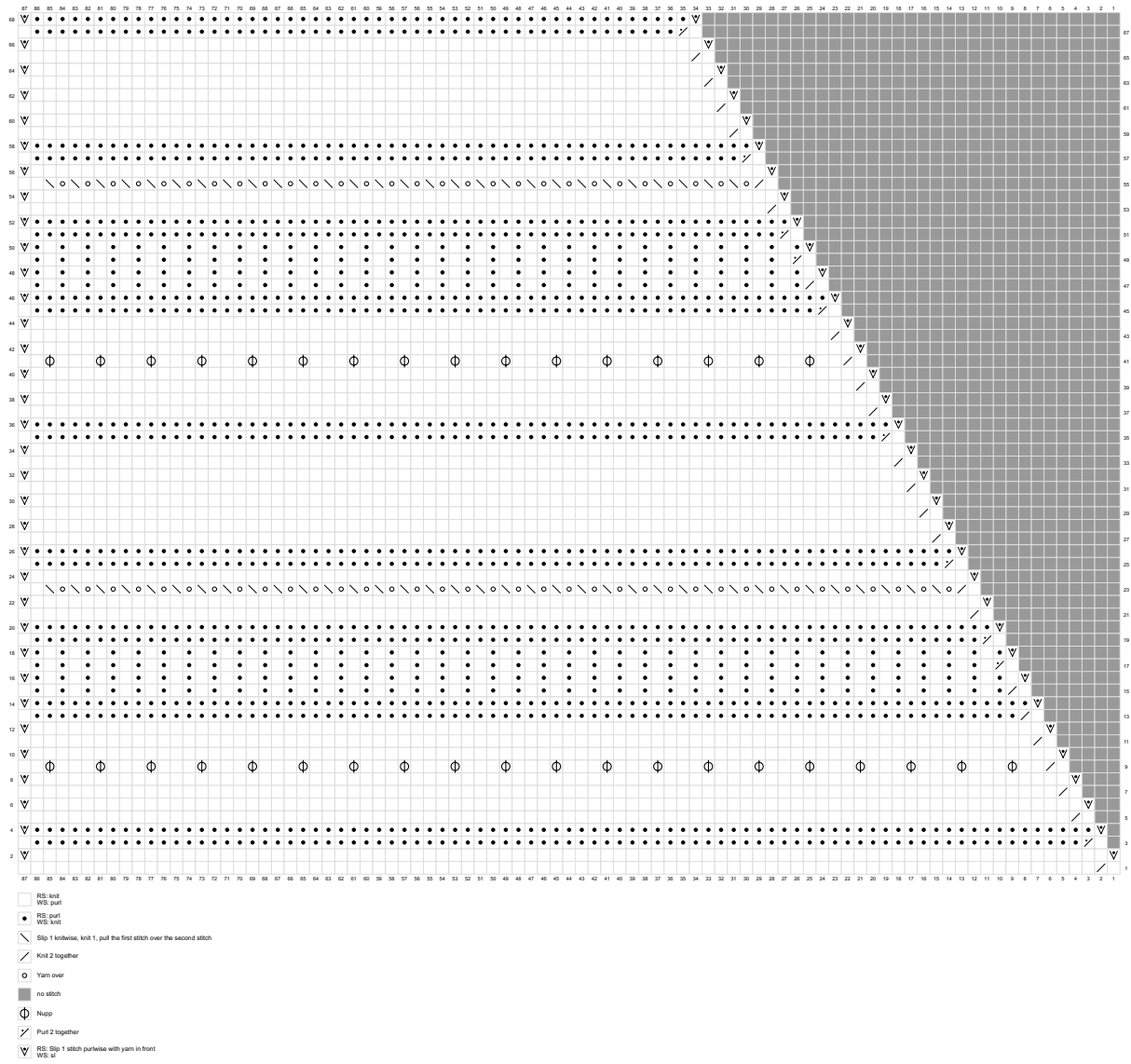


Chart D

