



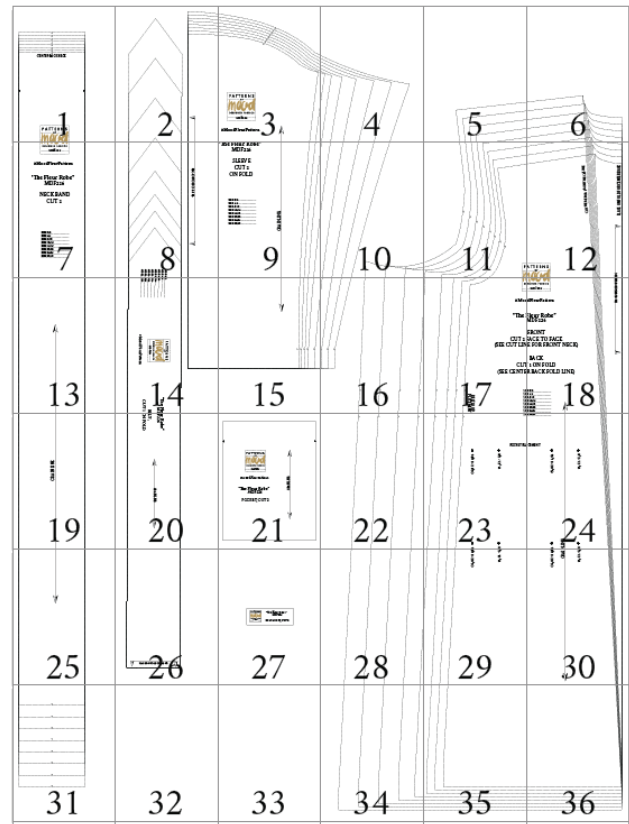
#MoodFleurPattern

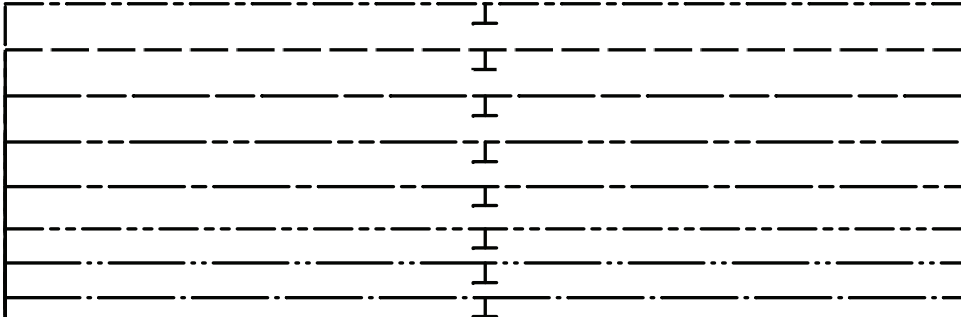
# “The Fleur Robe”

Sizes 0/2 to 28/30

Stop!

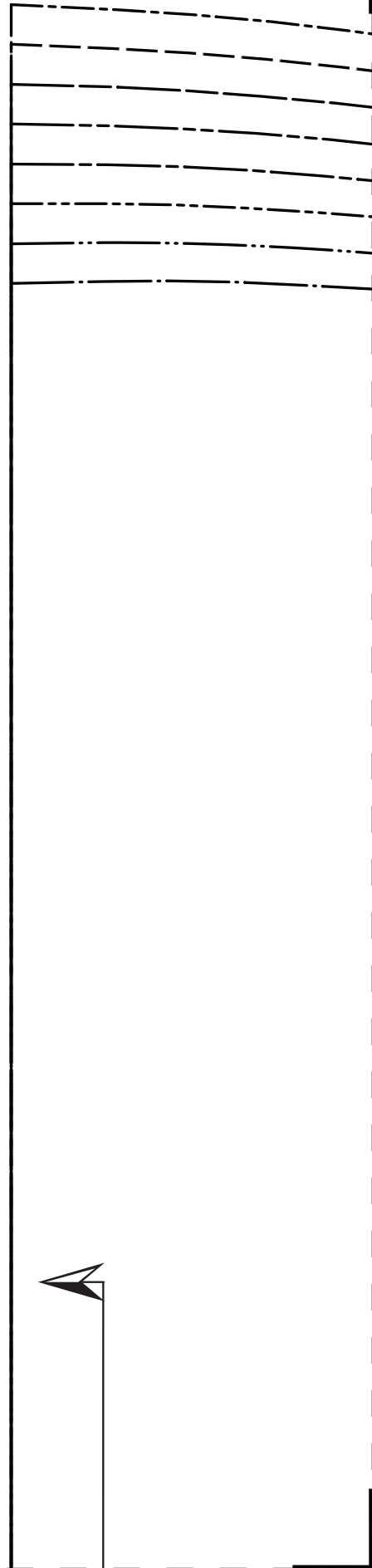
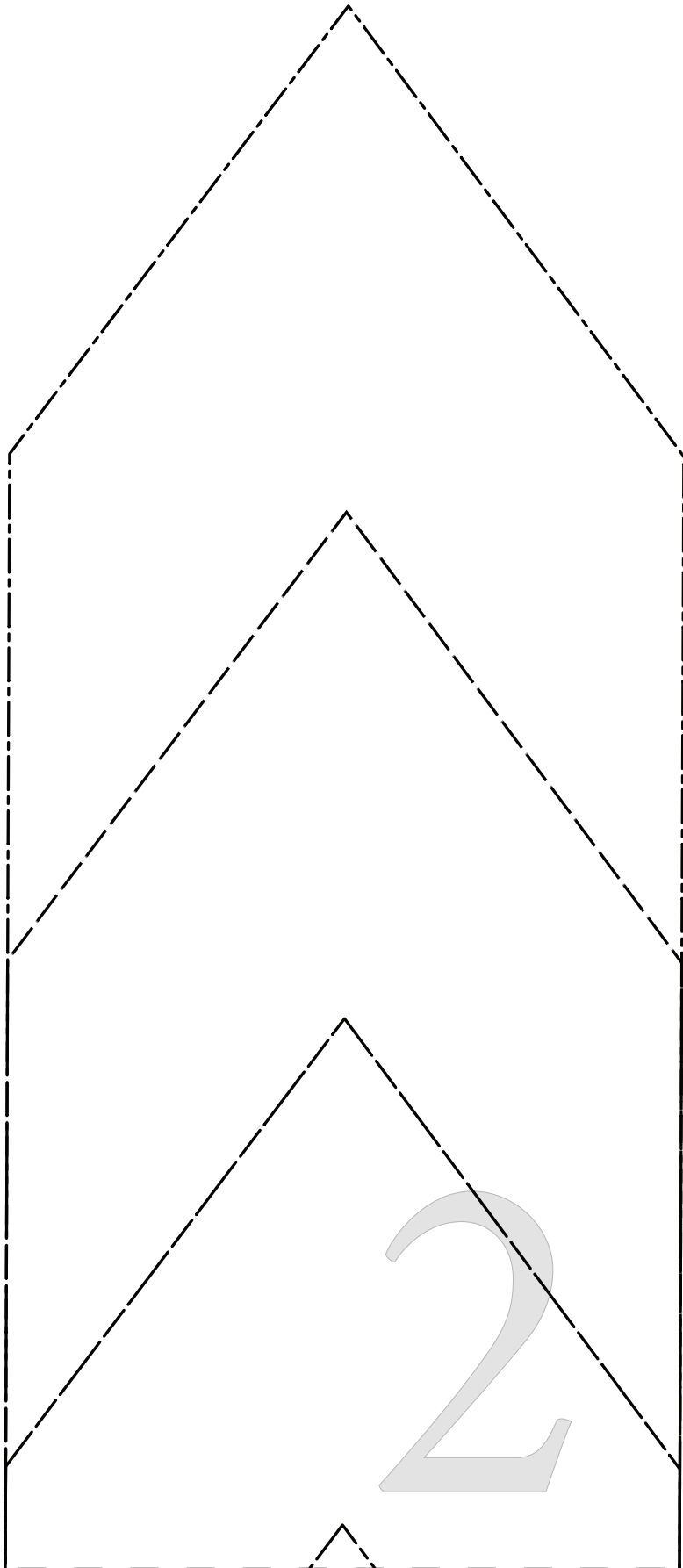
Print just this page first to check accuracy. The Mood square to the left should measure 2 inches. Print “actual size” (no scaling).

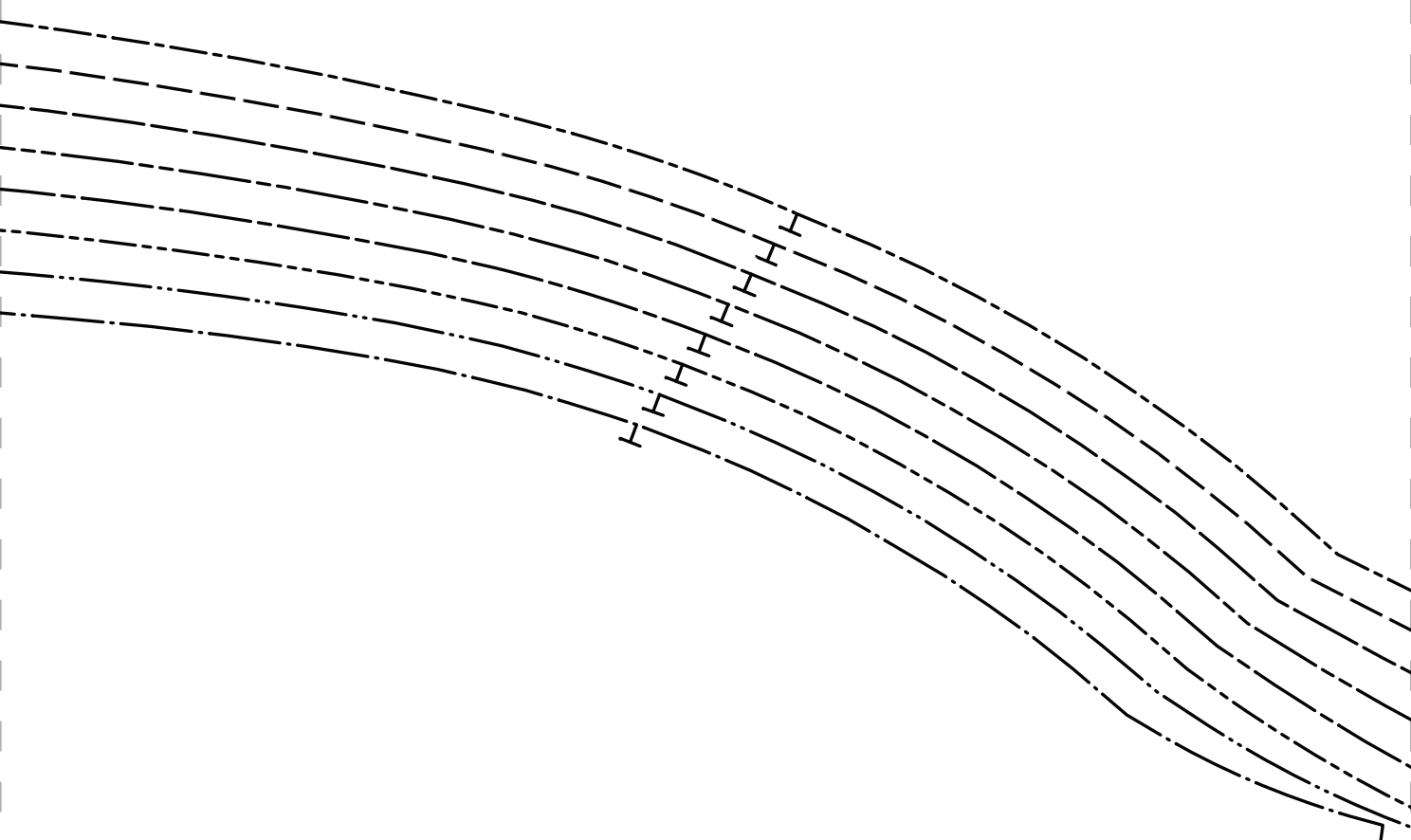




CENTER BACK NECK





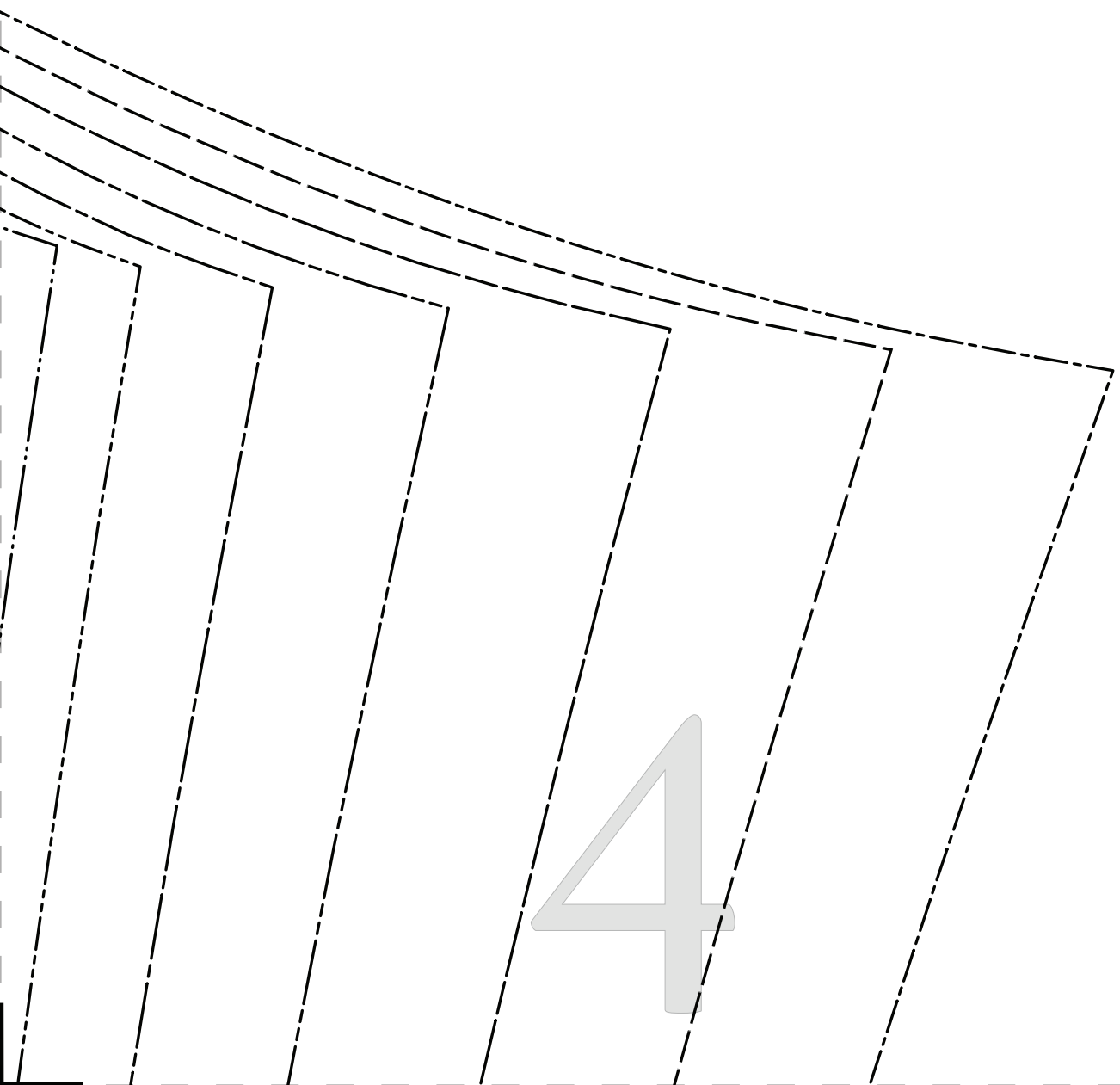


PATTERNS  
BY  
*mood*  
DESIGNER FABRICS  
MDF226

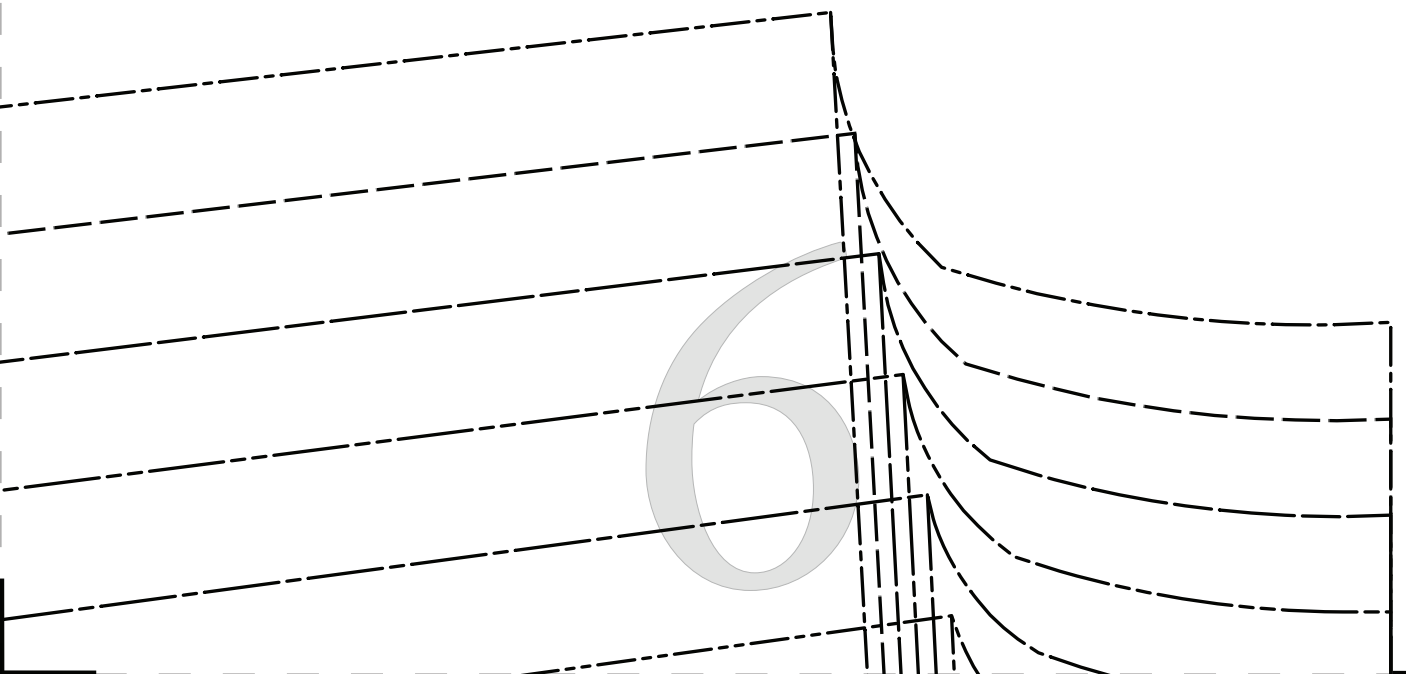
#MoodFleurPattern

3





5



#MoodFleurPattern

“The Fleur Robe”  
MDF226

NECK BAND  
CUT 2

SIZE 0/2 .....

SIZE 4/6 .....

SIZE 8/10 .....

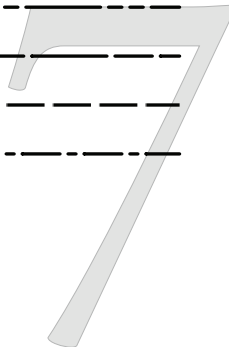
SIZE 12/14 .....

SIZE 16/18 .....

SIZE 20/22 .....

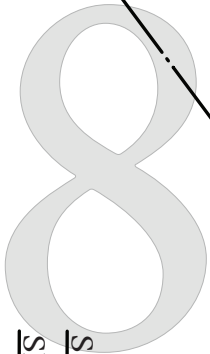
SIZE 24/26 .....

SIZE 28/30 .....





PLACE ON FOLD OF FABRIC



- SIZE 0
- SIZE 4
- SIZE 8
- SIZE 12
- SIZE 16
- SIZE 20
- SIZE 24
- SIZE 28

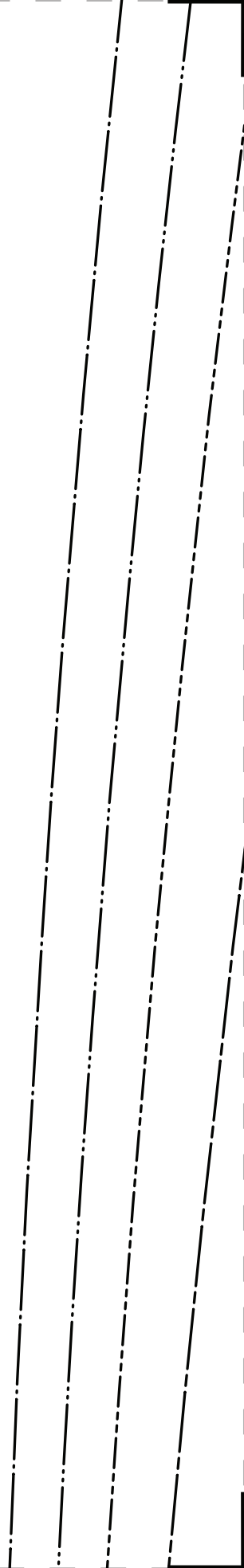
# “The Fleur Robe”

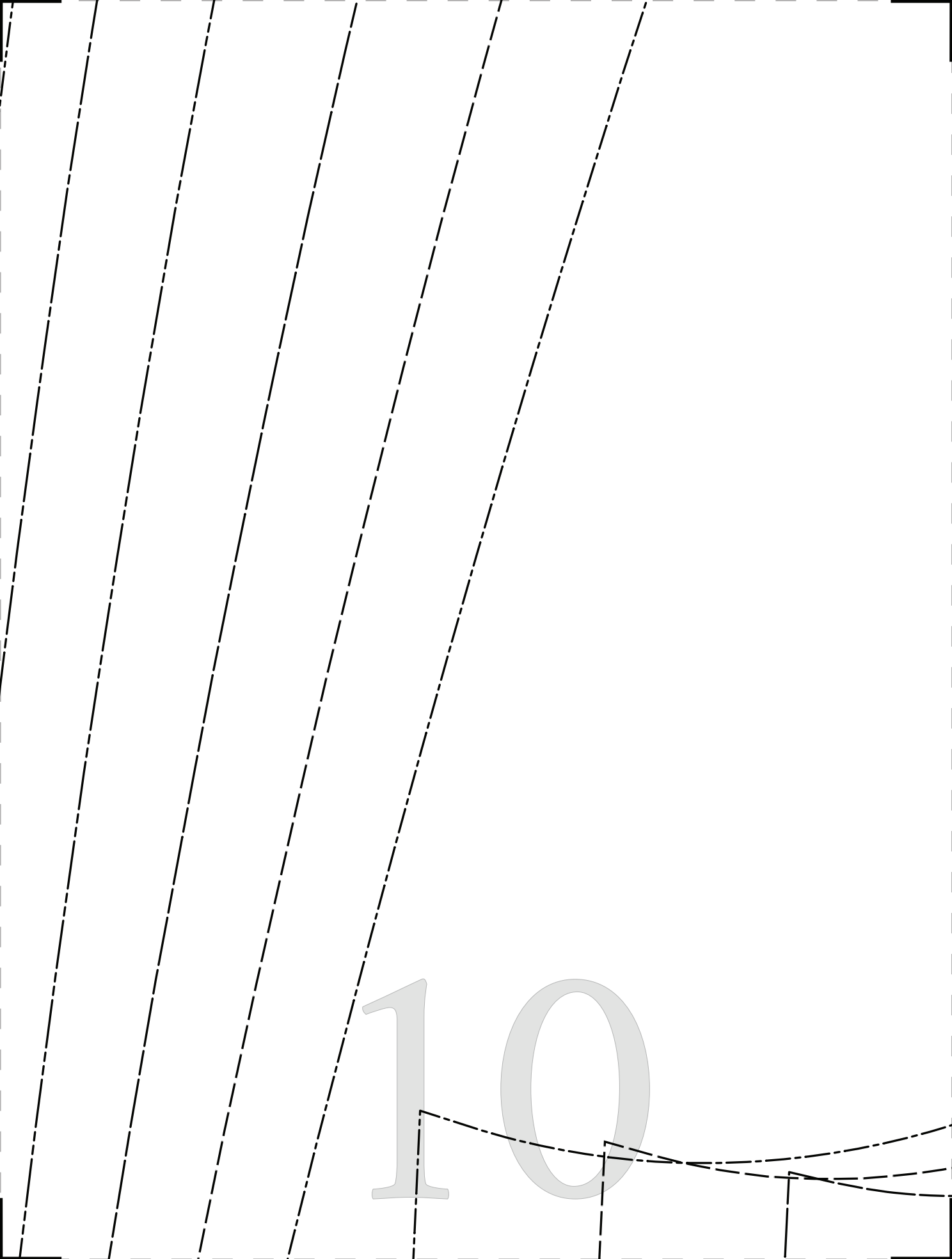
MDF226

SLEEVE  
CUT 2  
ON FOLD

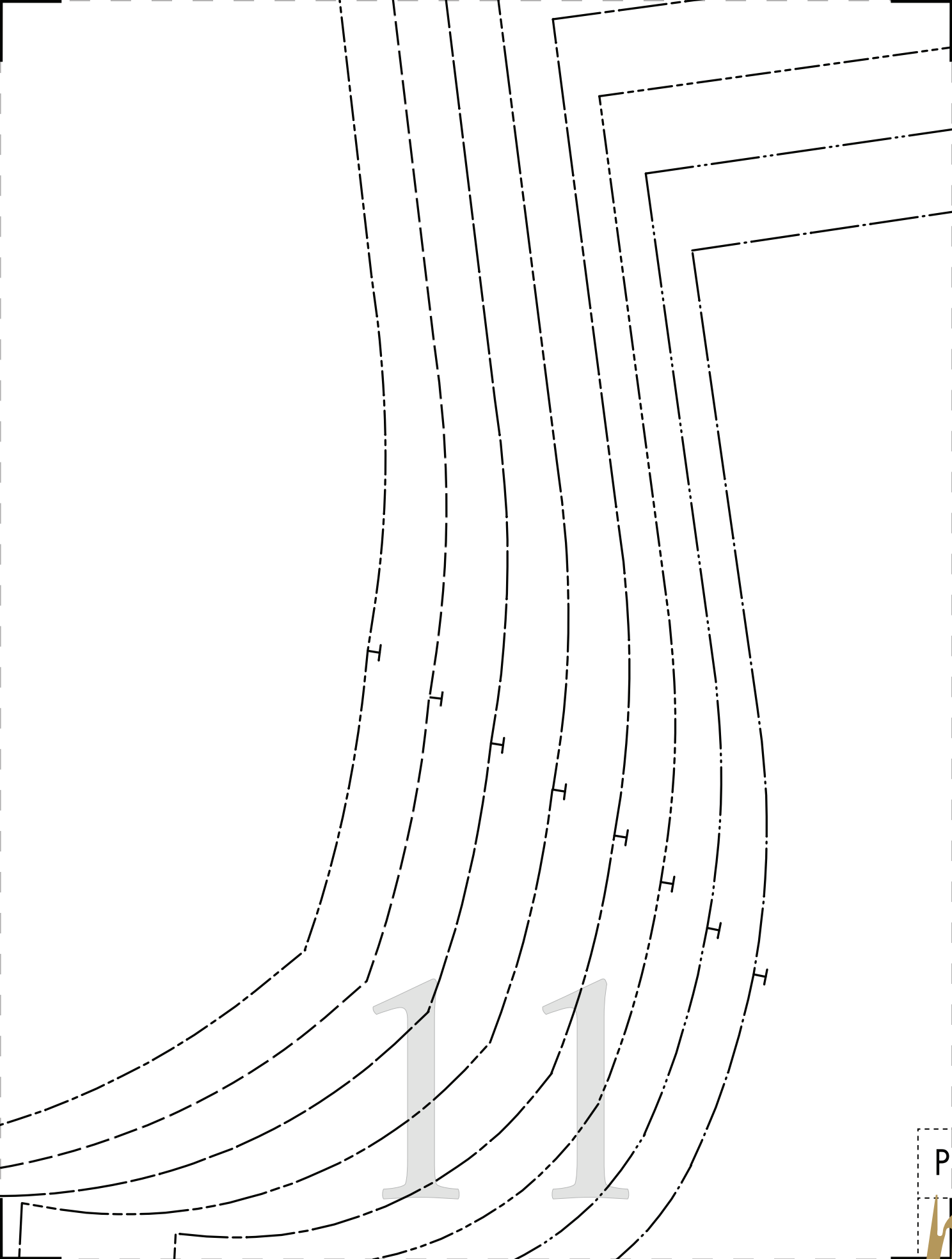
- SIZE 0/2 \_\_\_\_\_
- SIZE 4/6 \_\_\_\_\_
- SIZE 8/10 \_\_\_\_\_
- SIZE 12/14 \_\_\_\_\_
- SIZE 16/18 \_\_\_\_\_
- SIZE 20/22 \_\_\_\_\_
- SIZE 24/26 \_\_\_\_\_
- SIZE 28/30 \_\_\_\_\_

GRAINLINE





10



1

1

PATTERNS  
BY

*mailed*

12

CUT HERE FOR FRONT NECKLINE

PLACE ON FOLD FOR CENTER BACK



ERIC

13



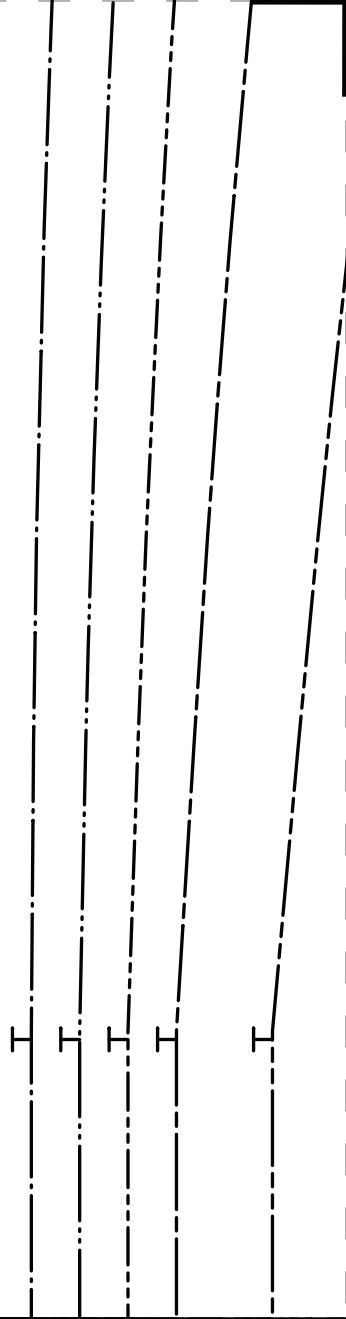
2/2  
/6  
/10  
2/14  
5/18  
0/22  
4/26  
3/30



#MoodFleurPattern

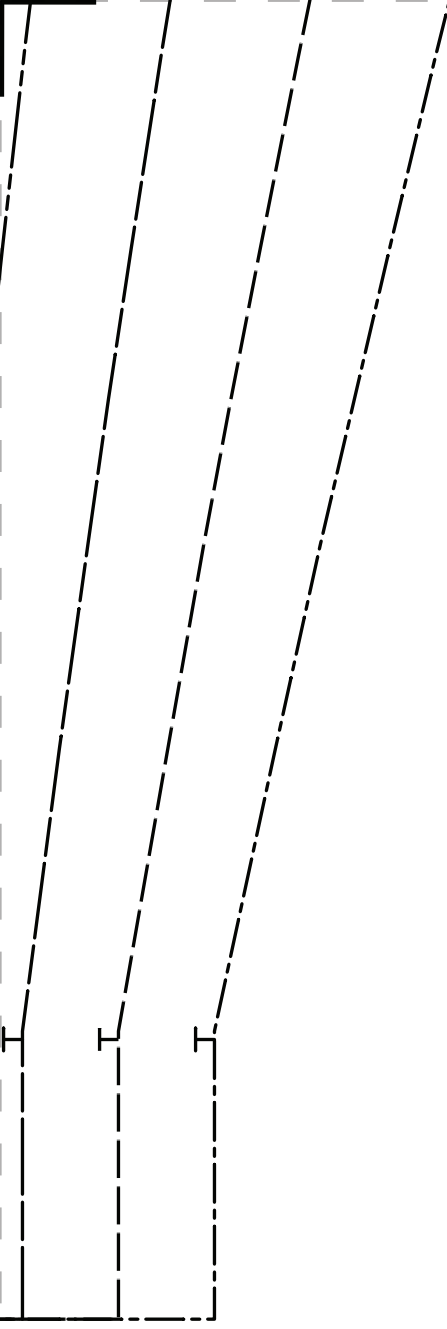
4  
"The Fleur  
MID

BH  
CUT 10

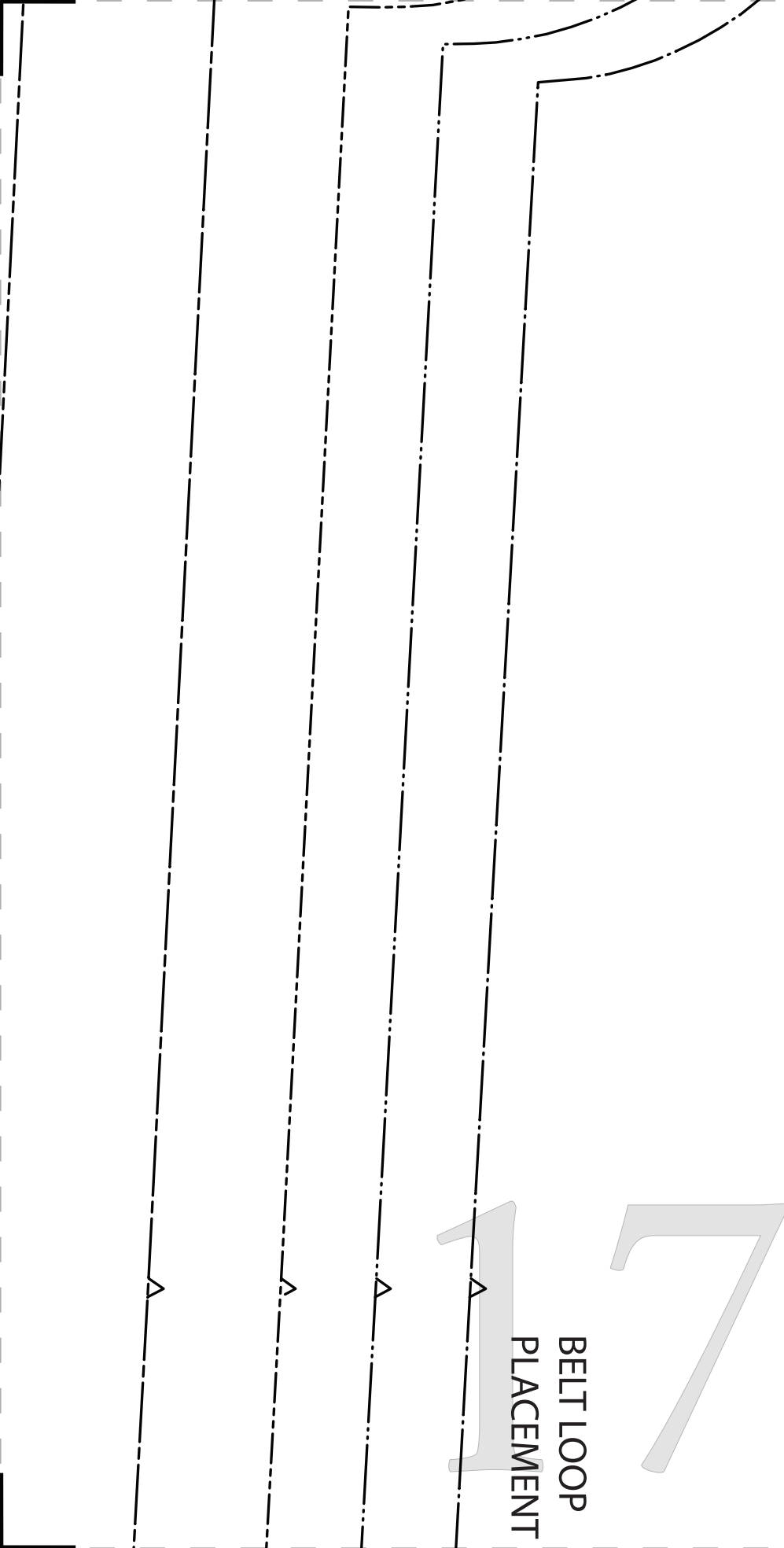


15





16



D

#Mod

“The

CUT 2  
(SEE CUT LIN

CUT  
(SEE CENTE

17  
BELT LOOP  
PLACEMENT

SI  
SI  
SI  
SI  
SI  
SI  
SI

Body Fleur Pattern

# Fleur Robe” MDF226

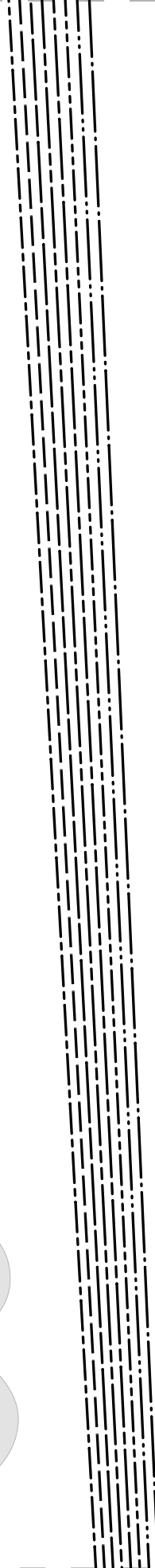
FRONT  
FACE TO FACE  
(NEEDLE FOR FRONT NECK)

BACK  
CUT 1 ON FOLD  
(OVER BACK FOLD LINE)

- SIZE 0/2
- SIZE 4/6
- SIZE 8/10
- SIZE 12/14
- SIZE 16/18
- SIZE 20/22
- SIZE 24/26

1 8

PLACE ON FOLD OF FAB



19

GRAINLINE

ur Robe”  
DF226

ELT,  
ON FOLD



20



#MoodFleurPattern

“The Fleur Robe”  
MDF226

POCKET, CUT 2



21

22

POCKET PL

● 0/2 - 12/14

● 16/18 - 28/30

23

● 0/

● 16/

Handwriting practice lines consisting of four rows. Each row has a solid top line, a dashed middle line, and a solid bottom line. Small triangles are placed at the top of each row to indicate the starting point for writing.



ACEMENT

● 16/18 - 28/30

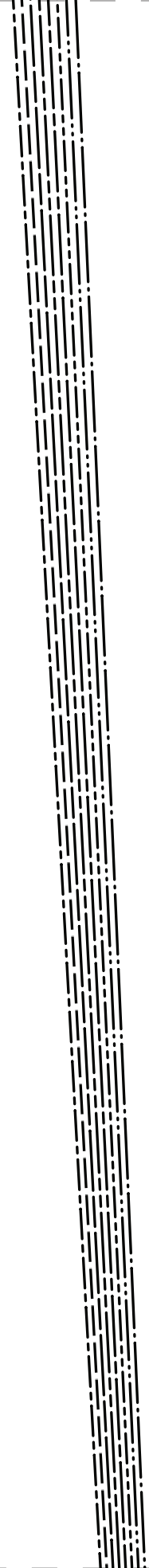
● 0/2 - 12/14

24

● 16

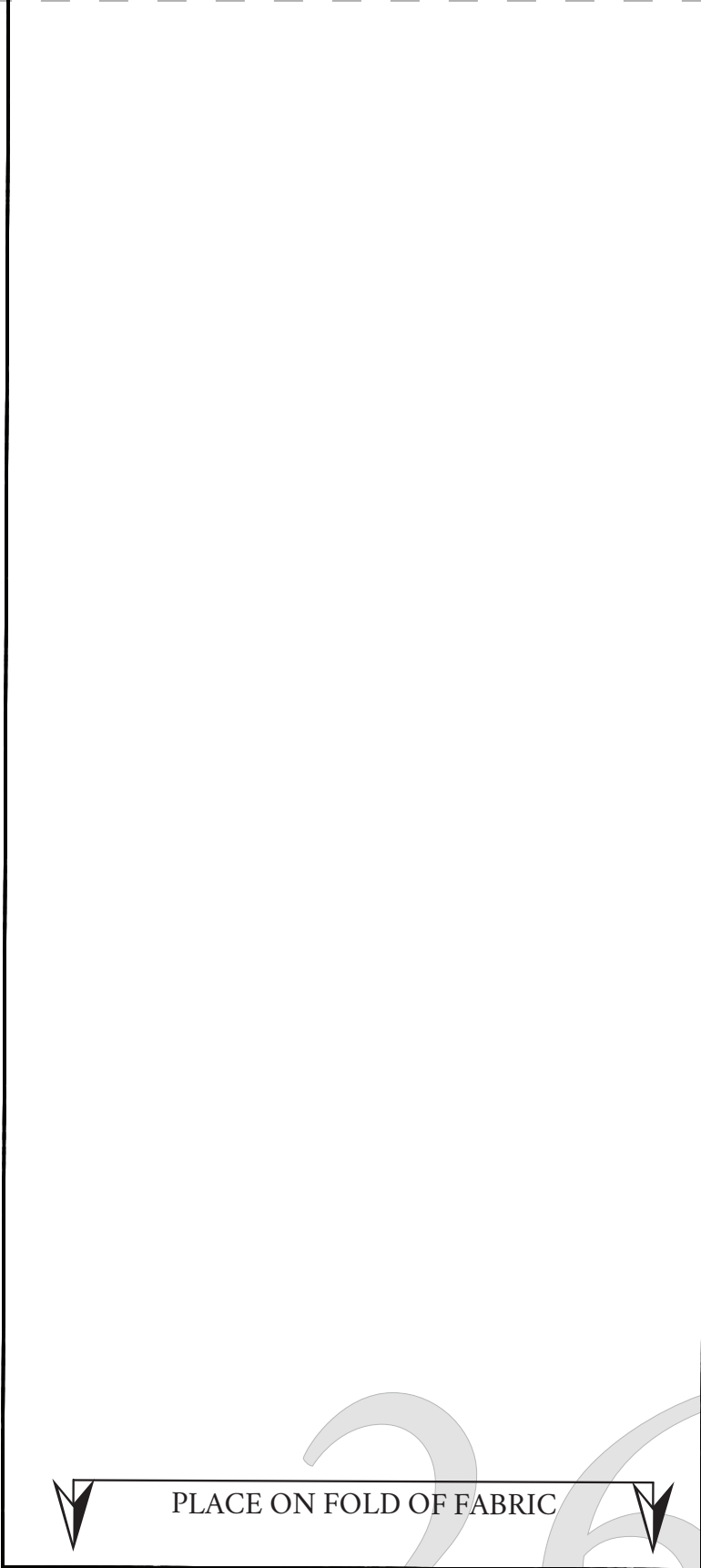
● 0/

ONLINE





25



PLACE ON FOLD OF FABRIC

26



“The Fleur Robe”  
MDF226

BELT LOOPS, CUT 2

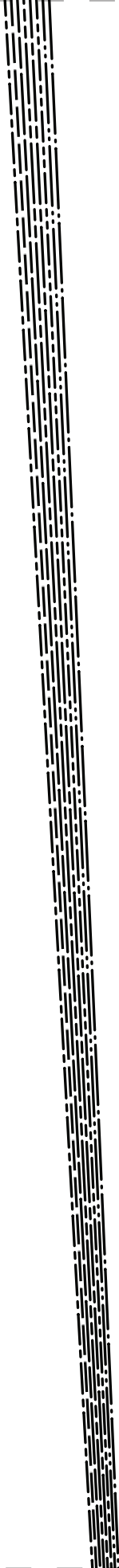
27

28

2 - 12/14

5/18 - 28/30

29



2 - 12/14

GRAIN

5/18 - 28/30

30



I
I
I
I
I
I
I
I

31



32

33

34

35

36