

# E & E Patterns

create classic children's clothing



## Pleated Playsuit

Sewing e-pattern in sizes 12 months to 9 years

## Pleated Playsuit

Comfortable, casual, yet sophisticated, one-piece playsuit in either shorts or ankle-length. Its shoulder ties and elasticized waist allow for a custom fit. The side slant pockets with contrast lining that give the illusion of piping, and pleated front detail, make this playsuit one-of-a-kind. The leg is slightly gathered into cuffs for a flattering fit.



### Sewing Level



### Fabric Recommendations

lightweight natural fabrics: cotton, cotton lawn, quilter's cotton, linen & linen blends

### Notions

Coordinating Thread

Fabric marker/pen

Safety pin

Elastic - 1/2" (1.2cm) wide

### Seam Allowances

3/8 (1cm) seam allowances are included unless instructed otherwise

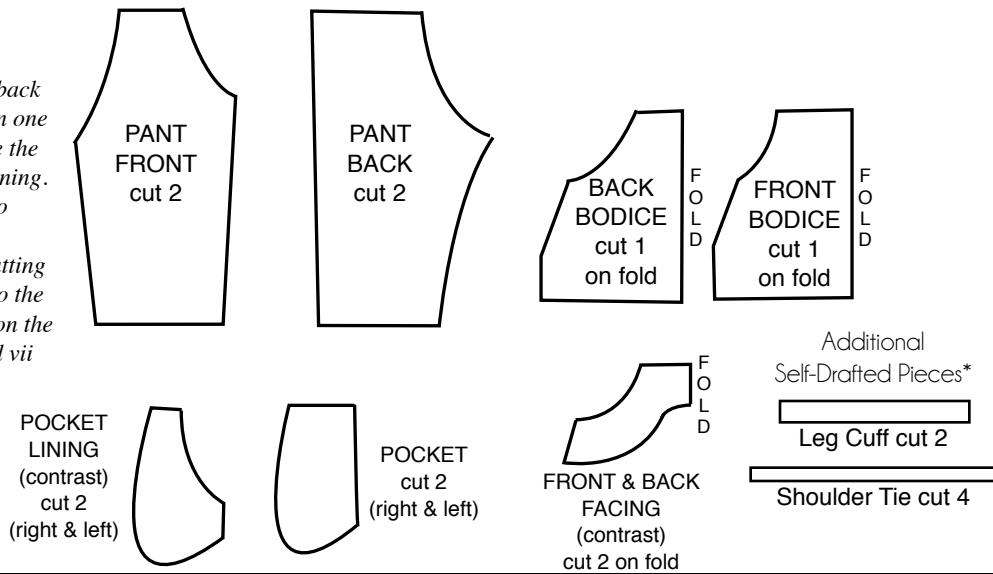
### Terms of Use

- The sale of this pattern in part or in whole is not permitted.
- Mass production is not permitted.



## Pattern Pieces

The bodice front & back and facing are all on one pattern piece, as are the pocket and pocket lining. It is recommended to trace each piece separately before cutting your fabric. Refer to the coloured diagrams on the pattern pages iv and vii for reference.



\*measurements for self-drafted pattern pieces on page xix

## Fabric Requirements

	18m-4T	5-9
Playsuit shorts length	3/4 yard 0.7m	1 yard 0.9m
Playsuit pant length	1 yard 0.9m	1 3/4 yard 1.6m
Contrasting Fabric (pocket lining, ties, bodice lining)	fat quarter (50cmX55cm)	1/4 yard 0.2m

## Sizing Chart

	12m/ 18m	2T/3T	4/5	6/7	8/9
<b>chest</b>	21 54	22 56	23 58	23.5 60	25 63.5
<b>waist</b>	20 51	21 53	22 56	23 58	24 61
<b>hip</b>	21 54	23 58	25 64	27 69	27.5 70

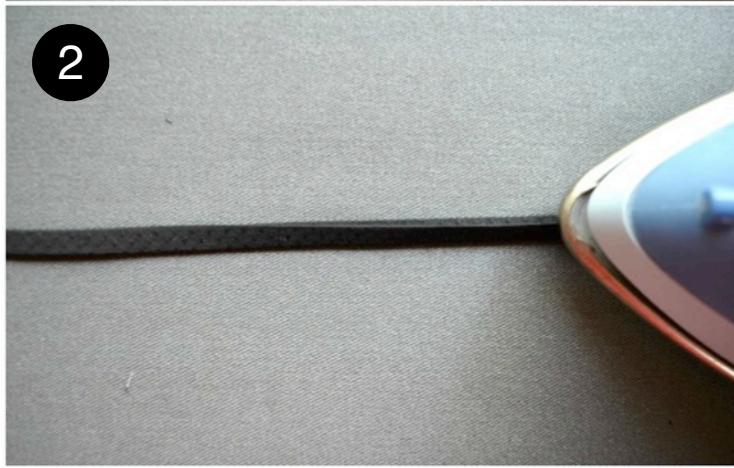
## Seam Allowances

3/8 (1cm) seam allowances are included unless instructed otherwise



### **Seam Finishing**

Finish all raw edges with overlock or zigzag stitch (optional).



### **Shoulder Ties**

1. Fold edges to the centre (right side on outside). Press.

2. Fold edges to centre again, right sides together. Press. Repeat with three other ties.

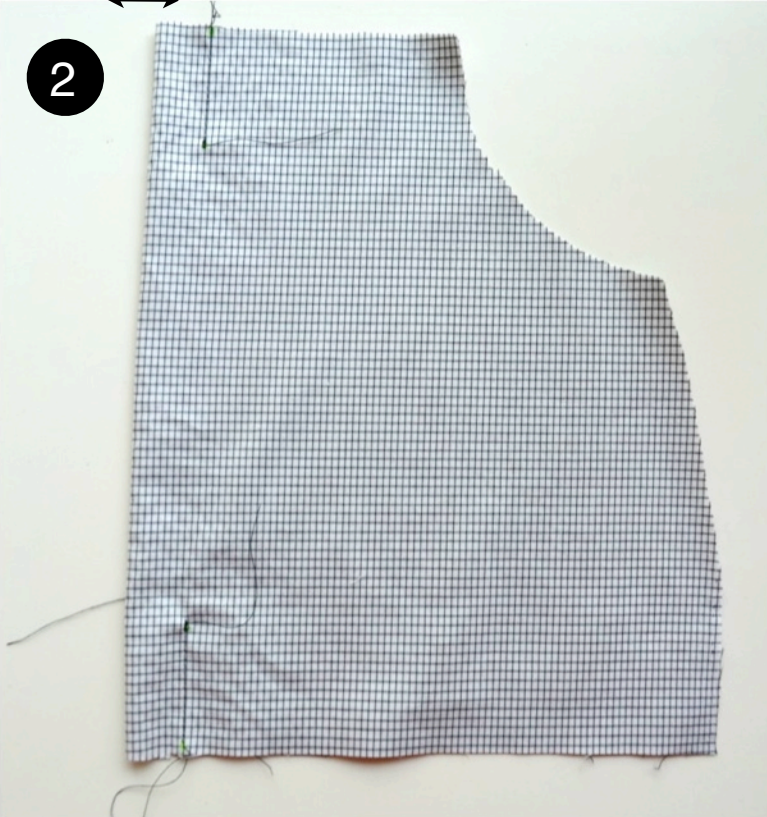
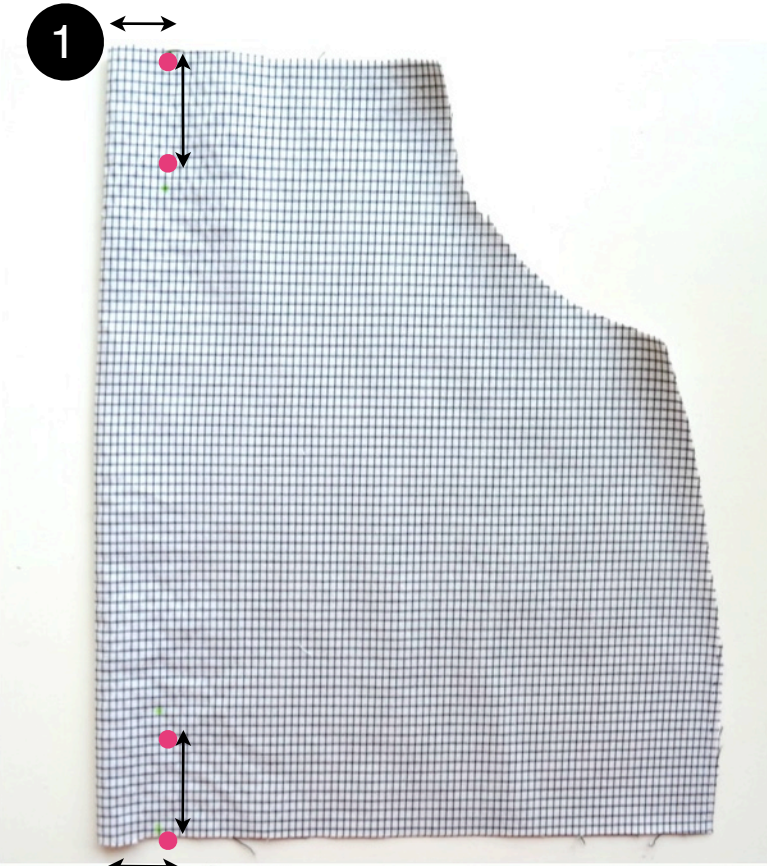


3. Edgestitch all four ties.



4. Knot one end on each tie and clip excess fabric.

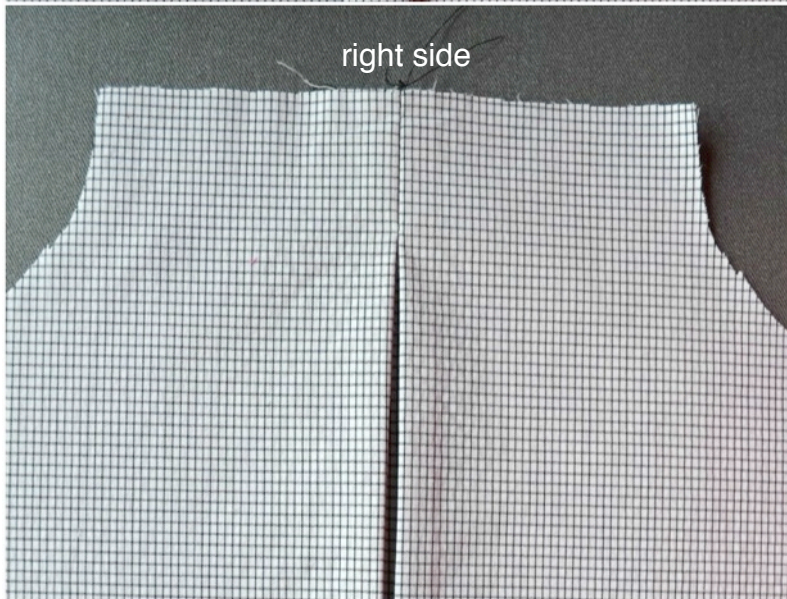
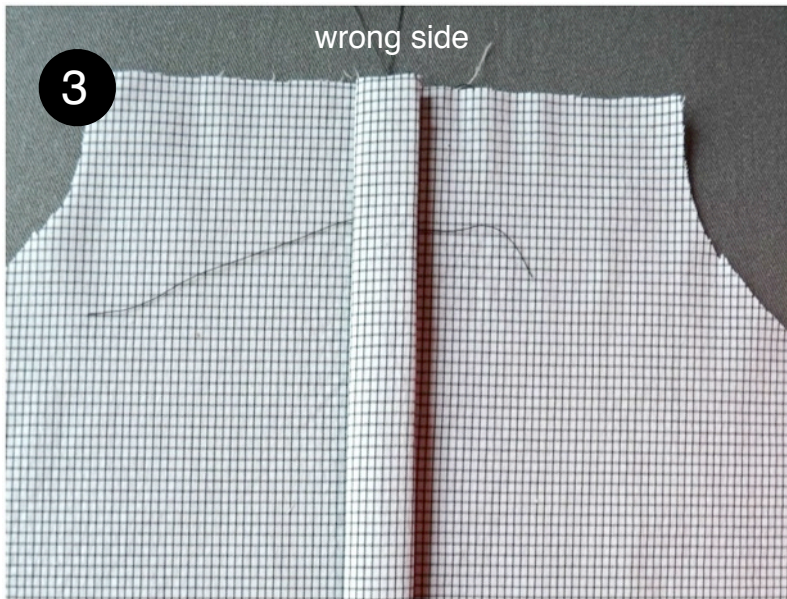




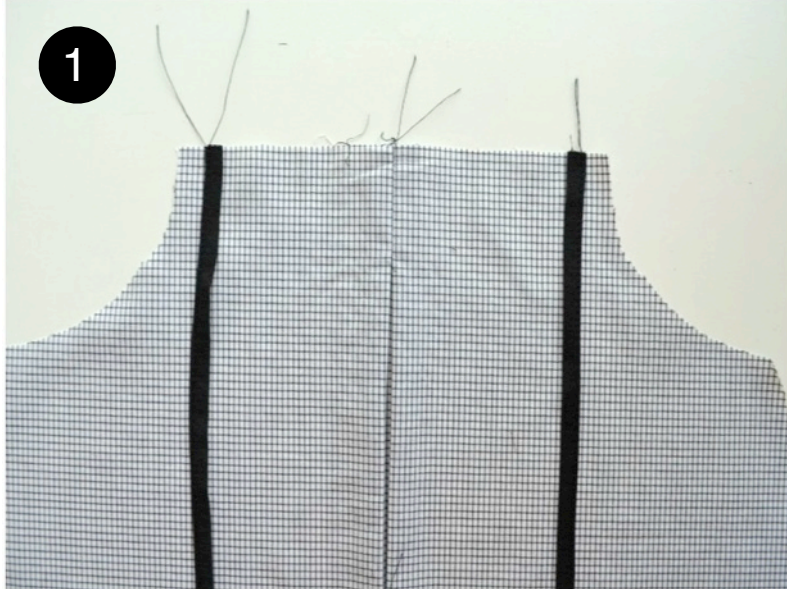
## Front Pleat

1. Fold front piece in half, right sides together. Measure  $\frac{3}{4}$ " (2cm) from centre on front piece (top and bottom). Mark with a dot. Measure 1.5" (4cm) from first dot mark again.
2. Stitch, backstitching at the 1.5" (4cm) mark.



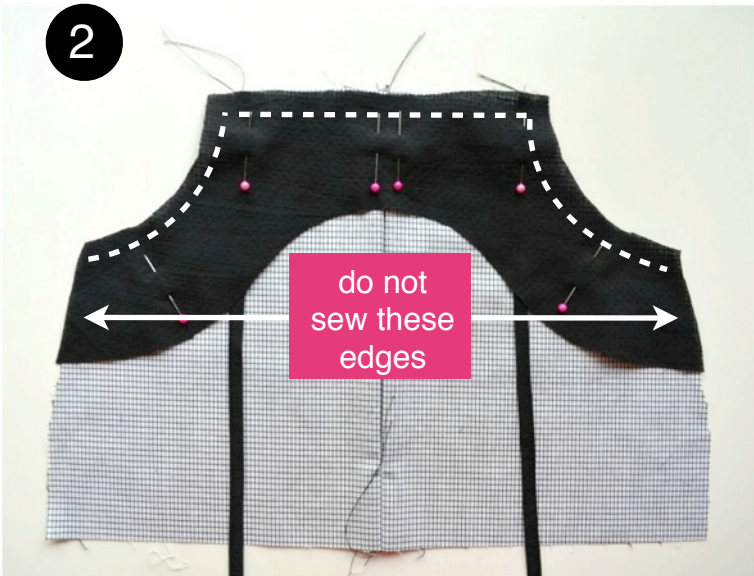


3. Press.

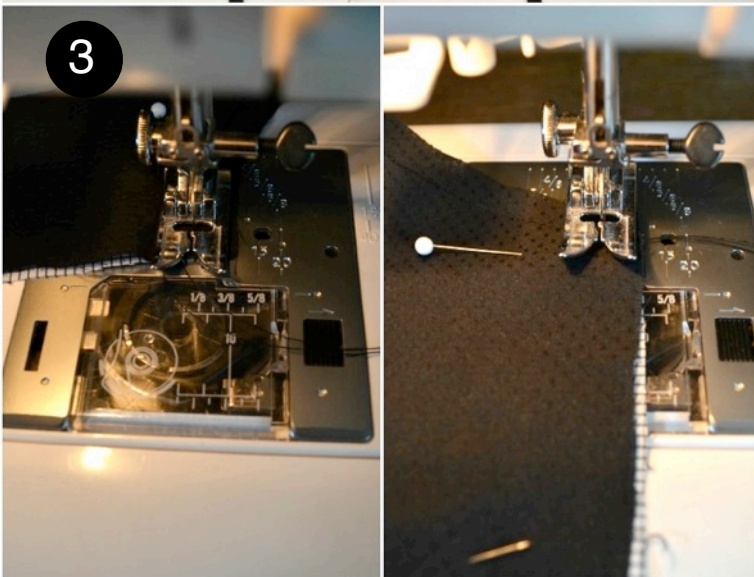


### Attaching Ties & Facing

1. Place ties on front of bodice (right side) about 3/8" (1cm) from the outer edge.



2. Place facing on front bodice, right sides together, pinning in place over ties.



3. Stitch facing to bodice. Pivot, by raising pressing foot with needle down at corners.

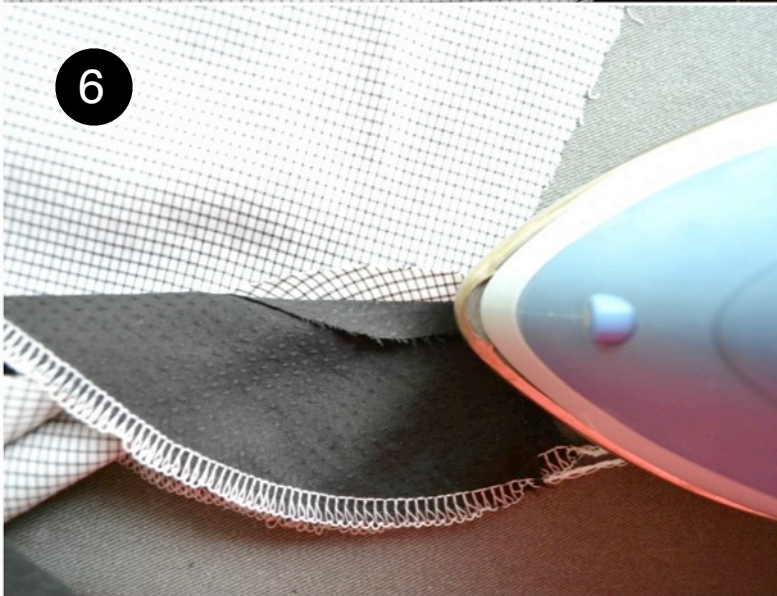


4. Finish facing raw edges (optional).

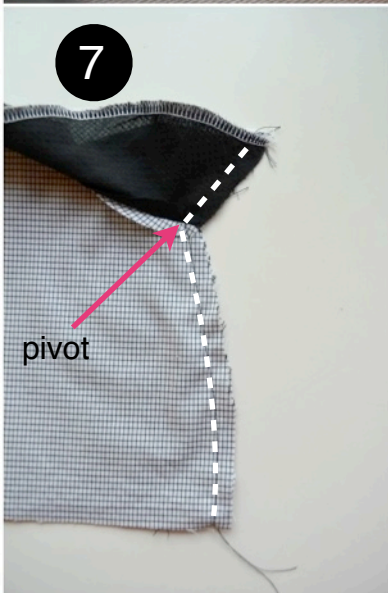




5. Clip curves and turn facing to the wrong side. Press.



6. Press seam allowances open. Repeat steps 1 -6 with back piece.



7. Match facing and bodices, and stitch front to back at side seams. Pivot where facing and bodice meet.

8. Finish raw edge and topstitch (optional).





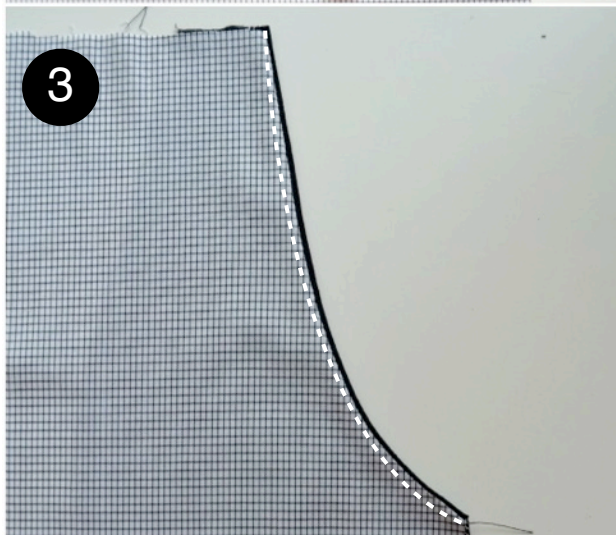
## Attaching Pockets

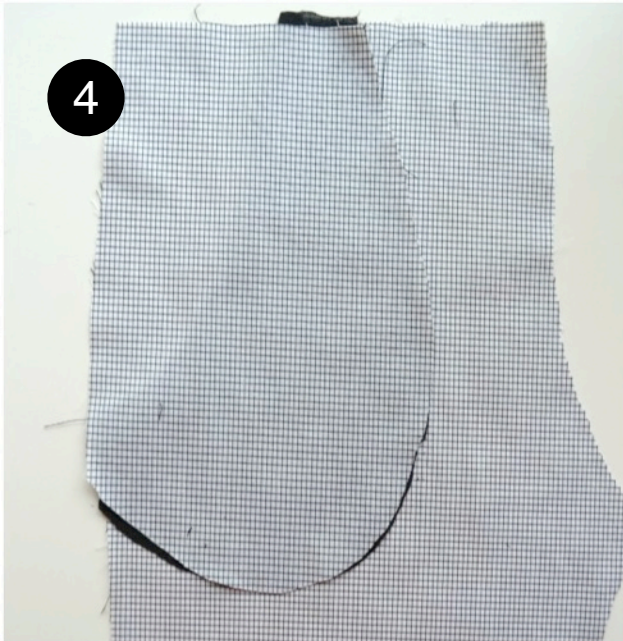
1. Place pocket lining on front, right sides together.



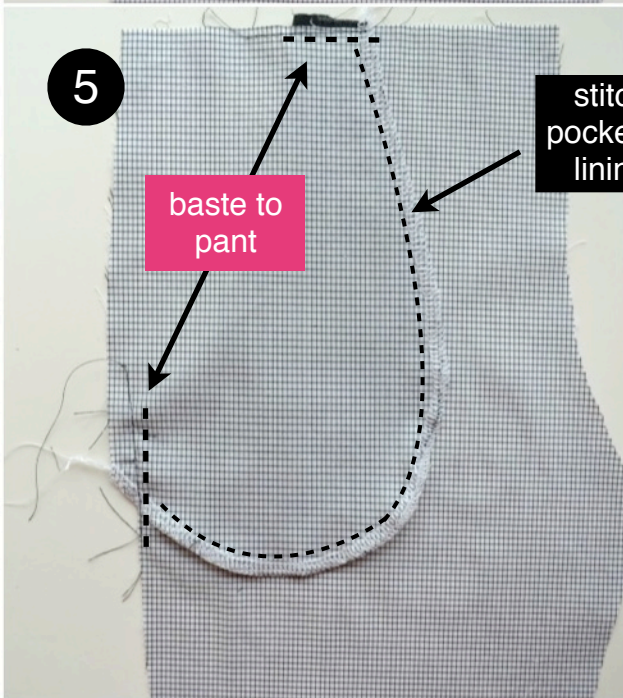
2. Stitch.

3. Turn pocket to wrong side leaving some lining showing on front. Press and topstitch.



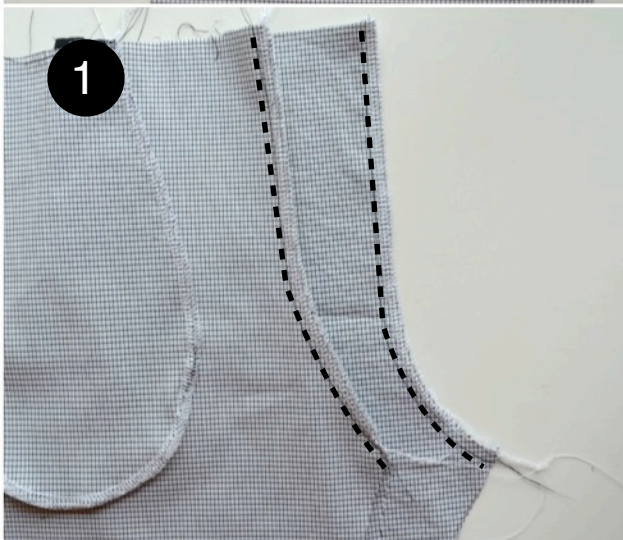


4. Place pocket on pocket lining, right sides together. Pin in place.



5. Stitch pocket to pocket lining at edges, and baste to pant at top and side.

### **Back Rise, Inseam, and Side seams**



1. Stitch back rise seams on front and back pieces, right sides together.





2. Press.



3. Stitch inseam, right sides together  
OR add snaps or snap tape.



4. Stitch side seams, right sides  
together.

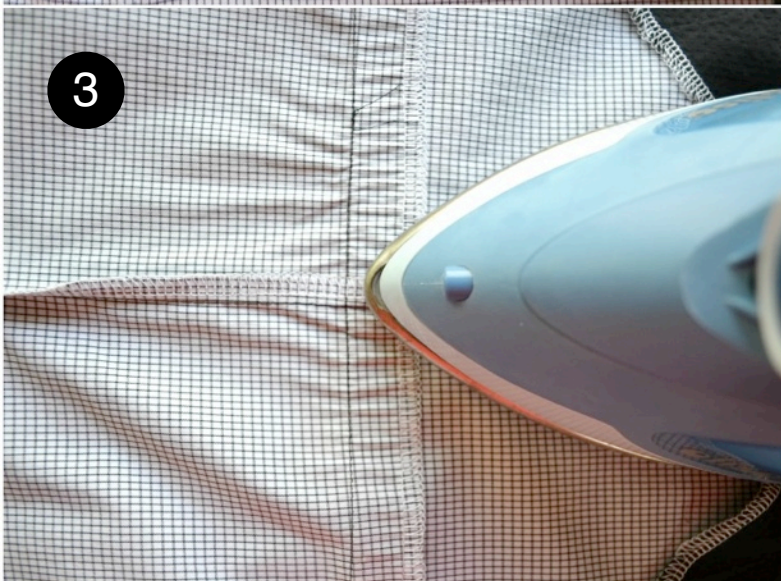


## **Attaching Top to Bottom**

1. Insert pant into bodice, right sides together, matching raw edges, front pleat to centre seam of pant, and side seams. Stitch  $7/8$ " (2.2cm) from raw edge.



2. Press seam allowance toward the bodice.



3. Finish raw edge.

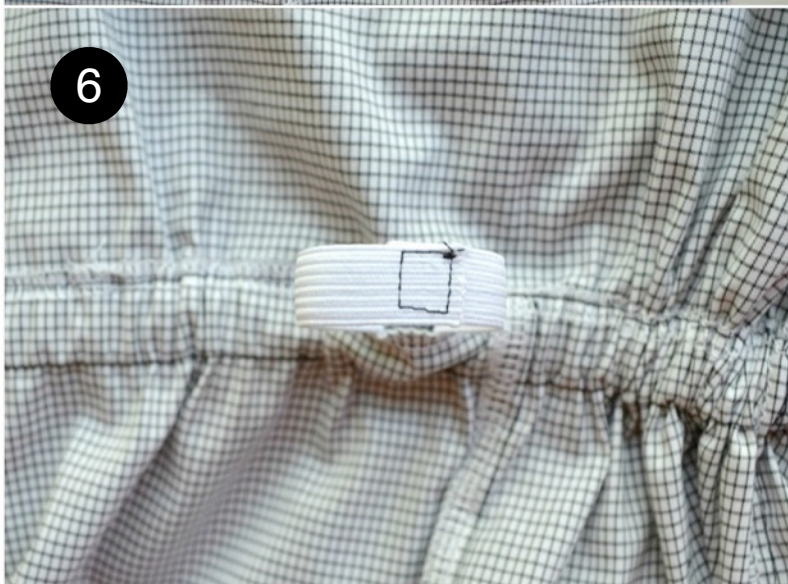




4. Pin and then stitch casing along finished edge (approx. 6/8" or 2 cm) leaving an opening for the elastic.



5. Insert elastic and pull through casing.



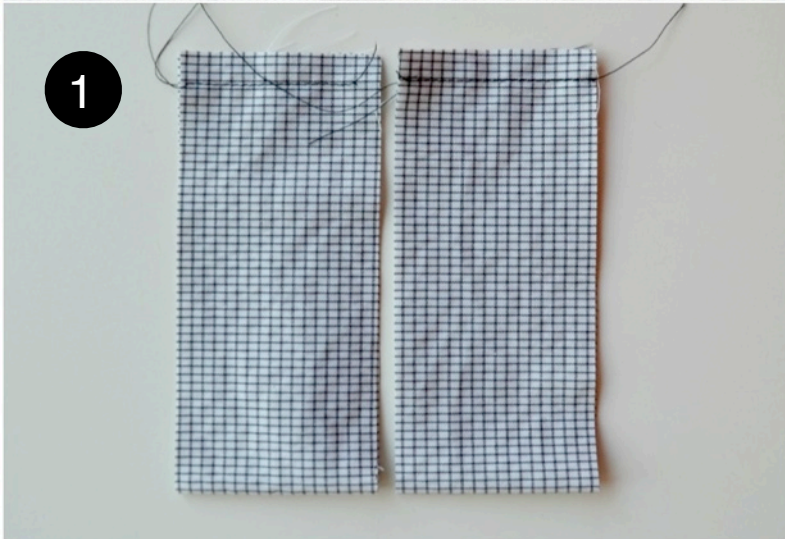
6. Stitch elastic ends together





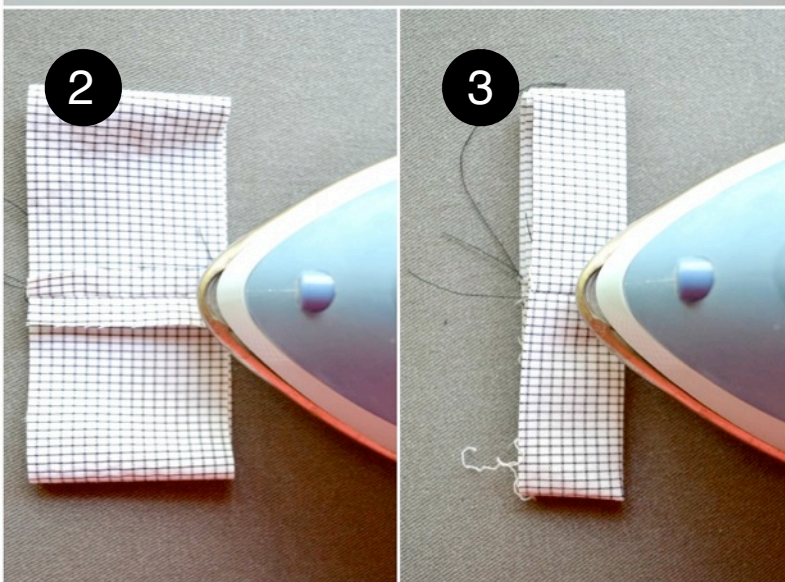
7. Stitch casing opening closed.

### Leg Cuffs



1. Fold Leg Cuff pieces in half widthwise and sew the short edge.

2. Press open seam allowance.

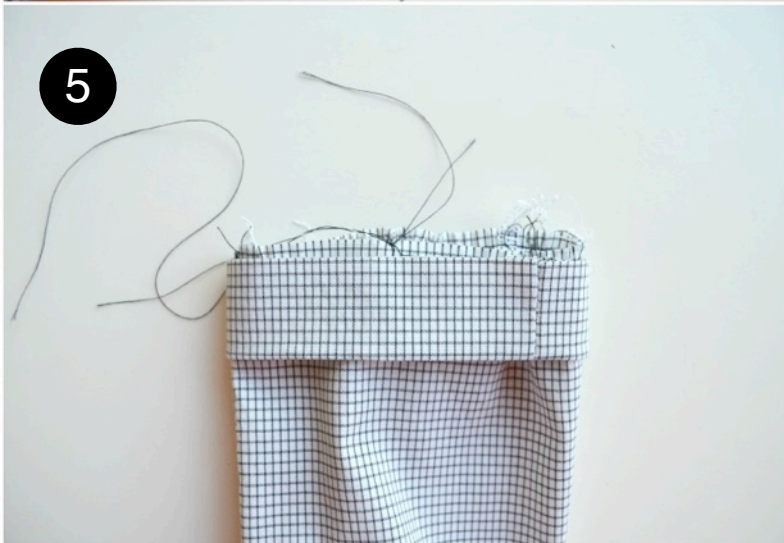


3. Fold Leg Cuffs in half, matching raw edges. Press.

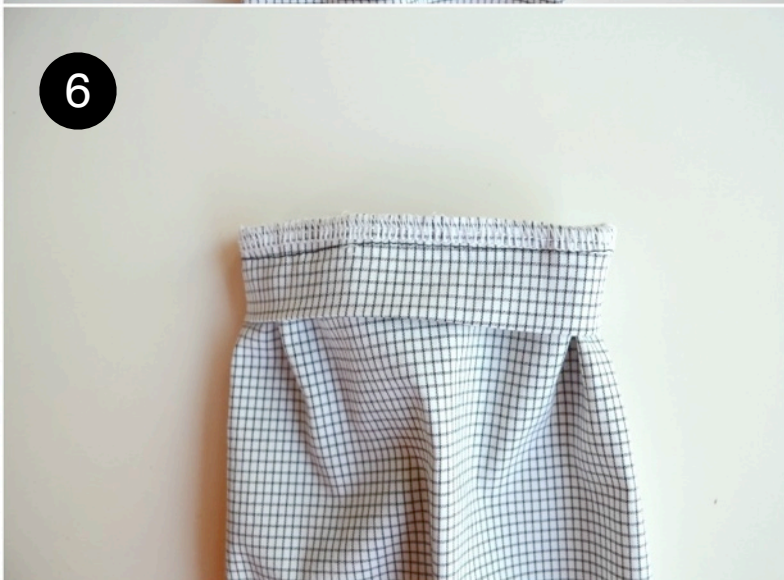





4. Using the largest stitch available on your machine, sew 1/8" (0.3cm) from bottom edge of leg. Pull bobbin thread gently to gather.



5. When width of pant leg matches leg cuff, knot gathering threads.



6. Stitch leg cuff to pant leg and finish raw edge. Press.

THANK YOU!  
  
Enjoy your new garment!

# E & E Patterns

create classic children's clothing



## Size Key

12m/18m .....  
.....

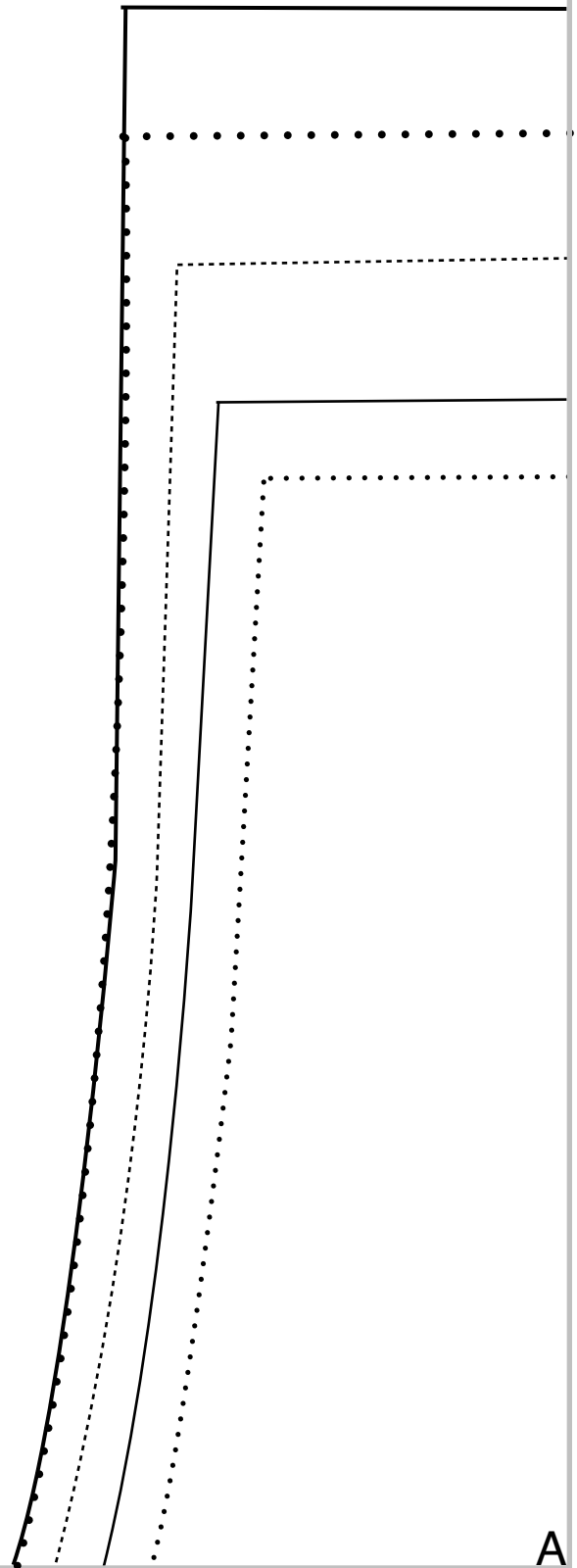
2/3 ———  
—————

4/5 - - - - -  
- - - - -

6/7 . . . . .  
. . . . .

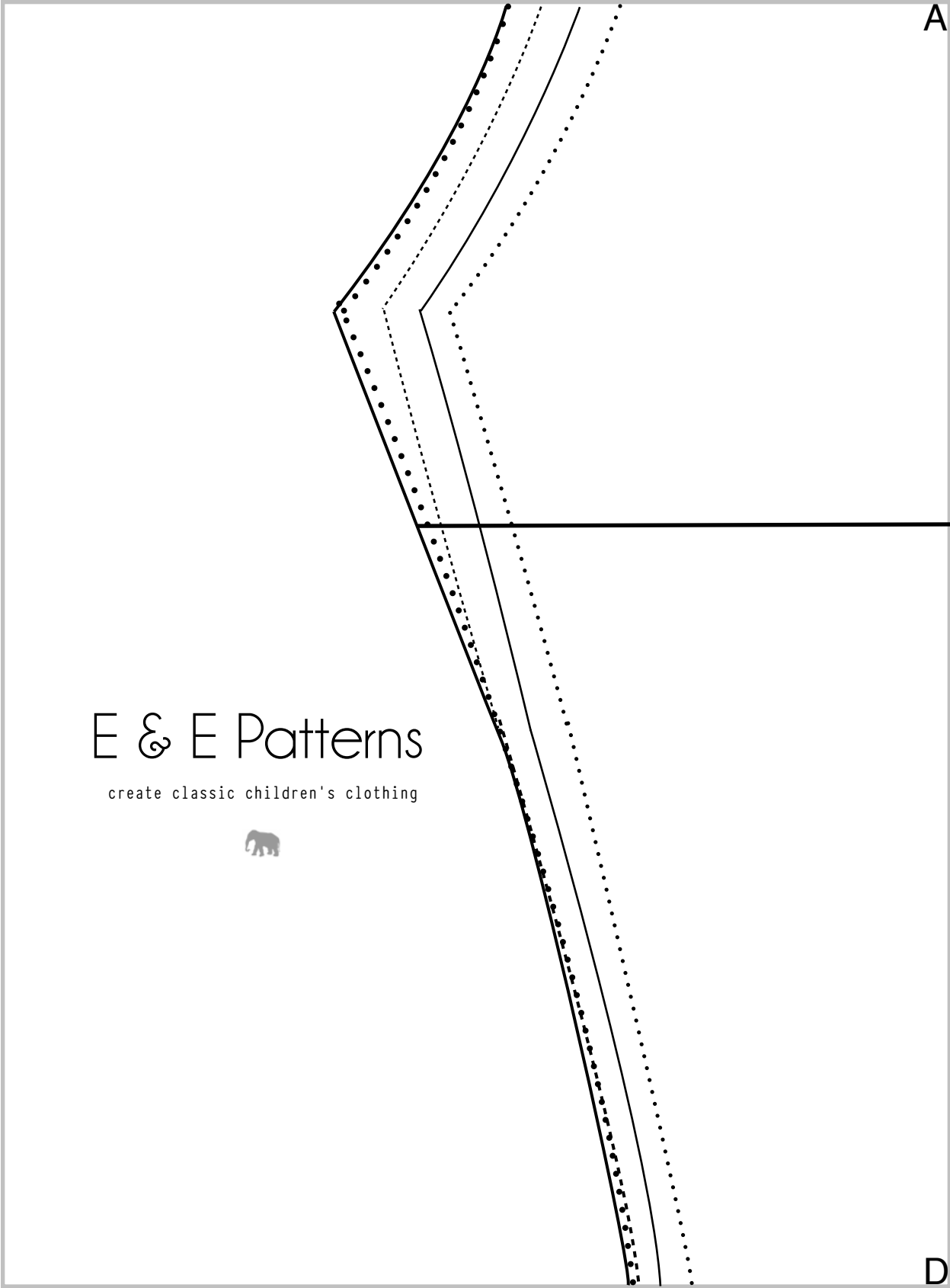
8/9 ———  
—————

Test Square  
1 inch  
2.5 cm



A





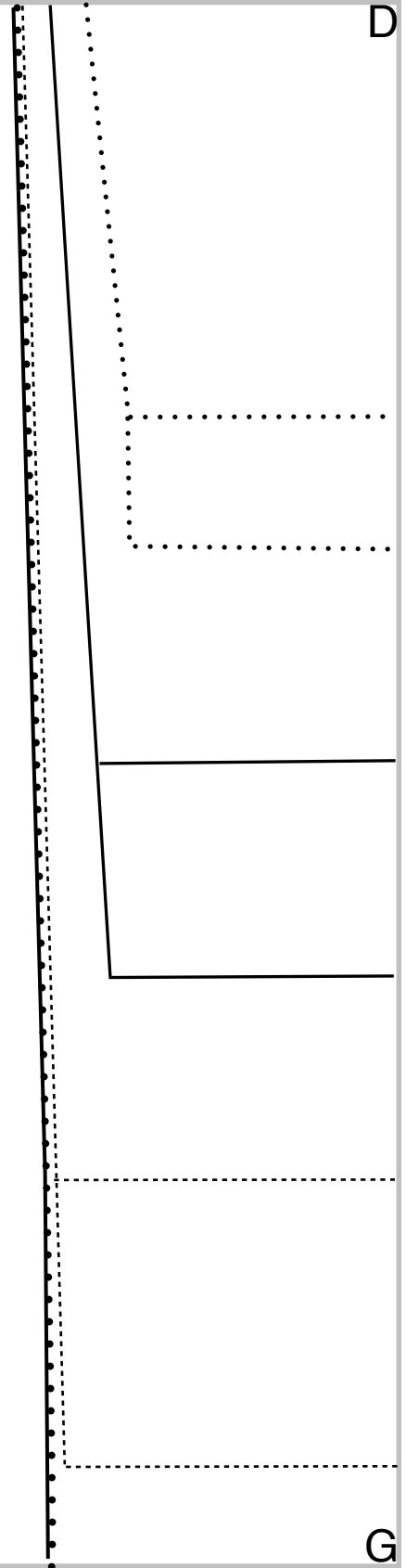
# E & E Patterns

create classic children's clothing



# E & E Patterns

create classic children's clothing





# E & E Patterns

create classic children's clothing

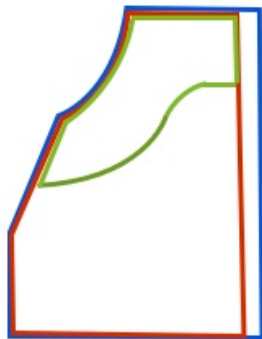


## Instructions for Cutting Front & Back Bodice and Facing

Tracing each pattern piece separately  
(Front Bodice, Back Bodice, Facing) and  
then cutting from fabric is recommended.

OR

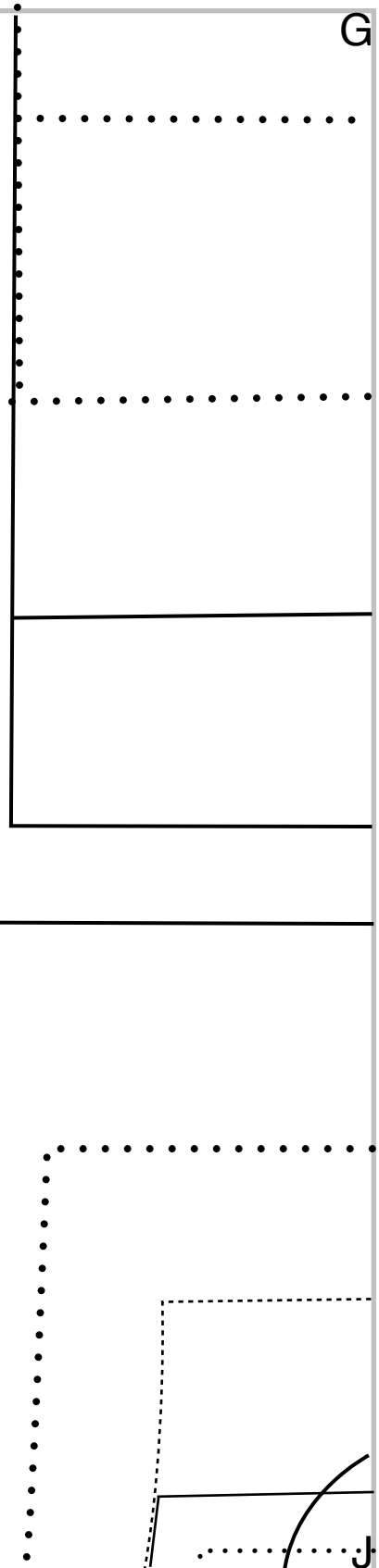
1. Cut Front Bodice pattern piece
2. Cut Front Bodice from fabric
3. Cut Back Bodice pattern piece
4. Cut Back Bodice from fabric
5. Cut Facing pattern piece
6. Cut Facing from fabric

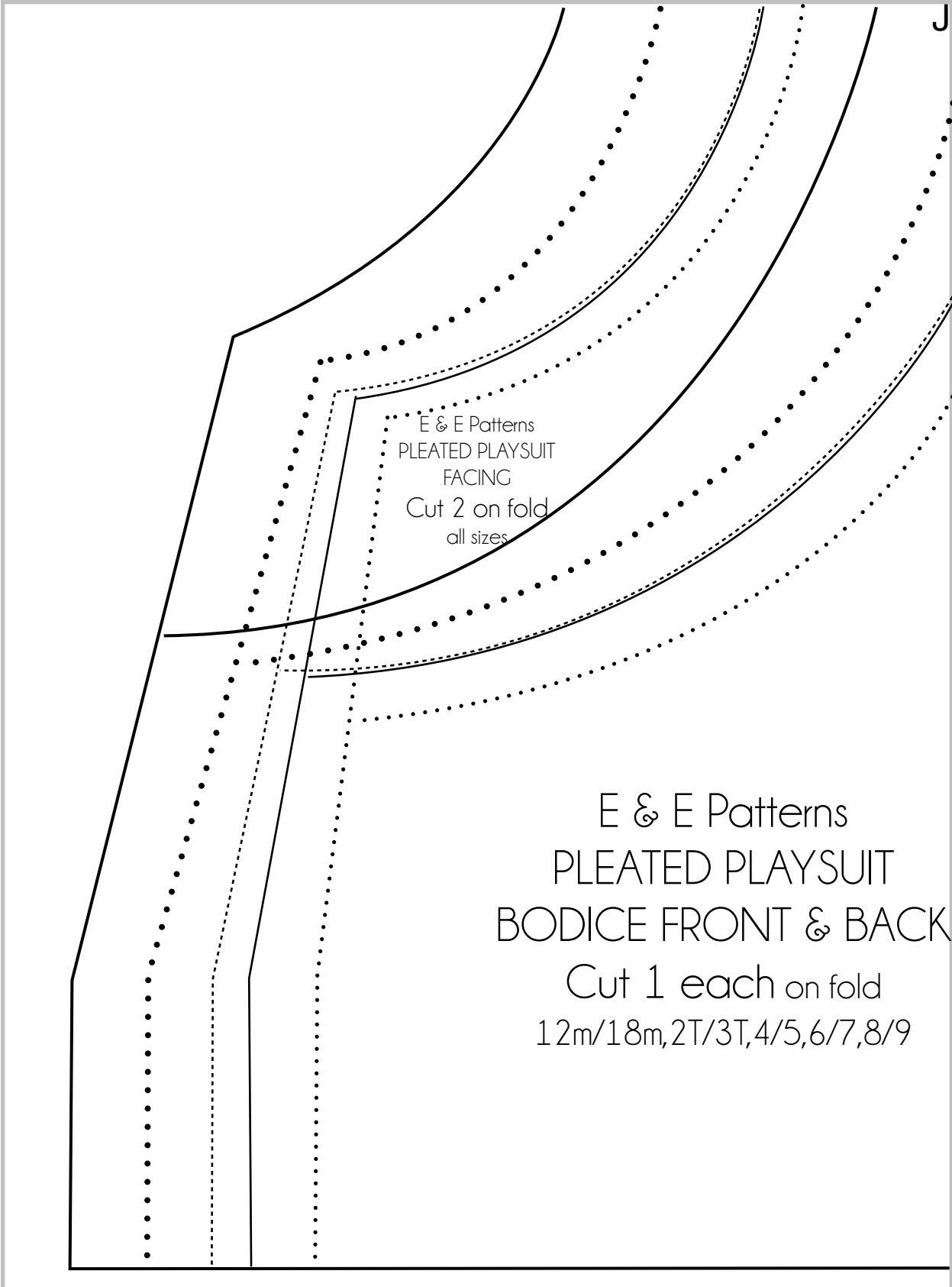


**Bodice Front - cut 1 on fold**

**Bodice Back - cut 1 on fold**

**Facing - cut 2 on fold**

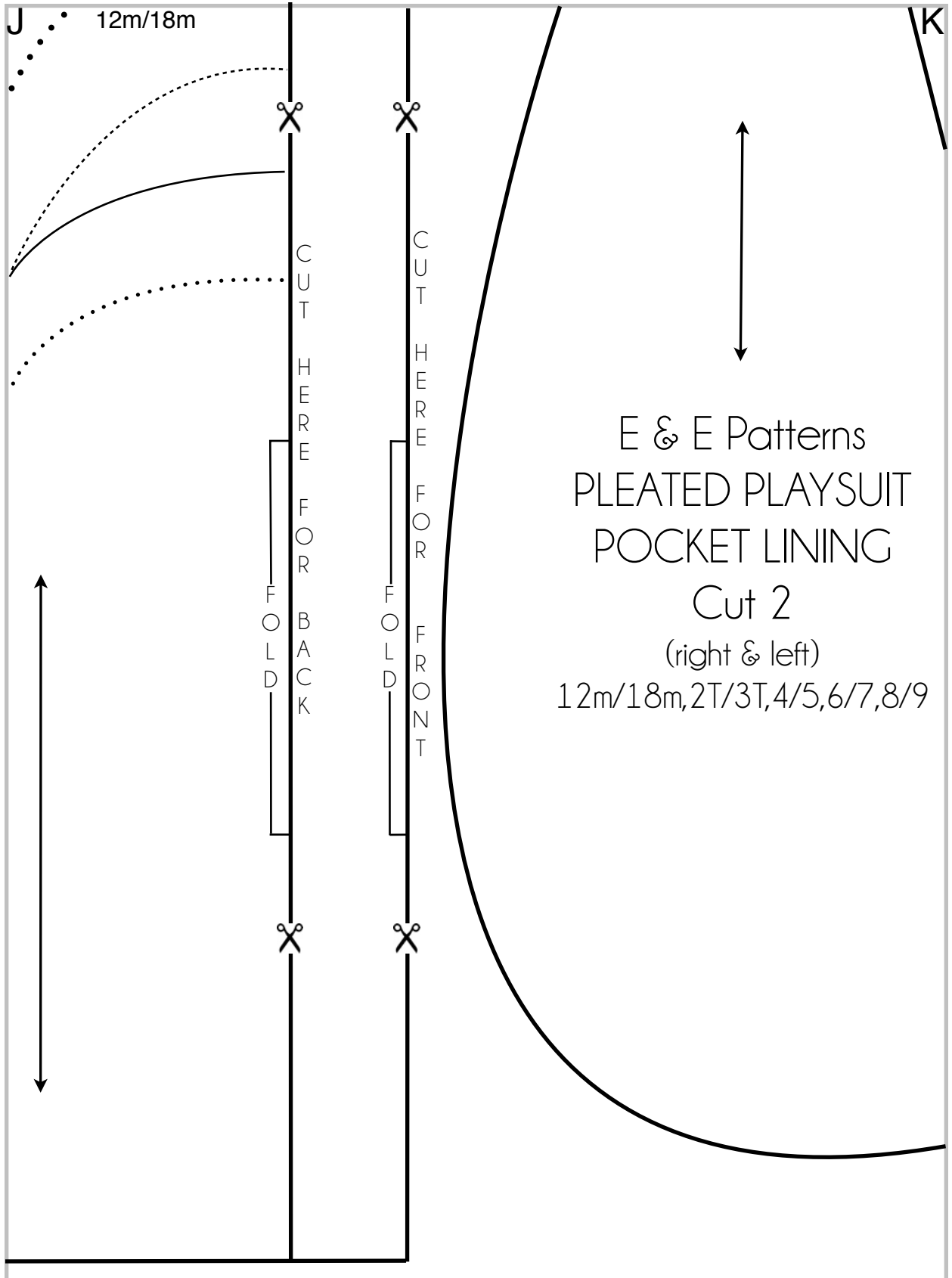




E & E Patterns  
PLEATED PLAYSUIT  
FACING  
Cut 2 on fold  
all sizes

E & E Patterns  
PLEATED PLAYSUIT  
BODICE FRONT & BACK  
Cut 1 each on fold  
12m/18m, 2T/3T, 4/5, 6/7, 8/9

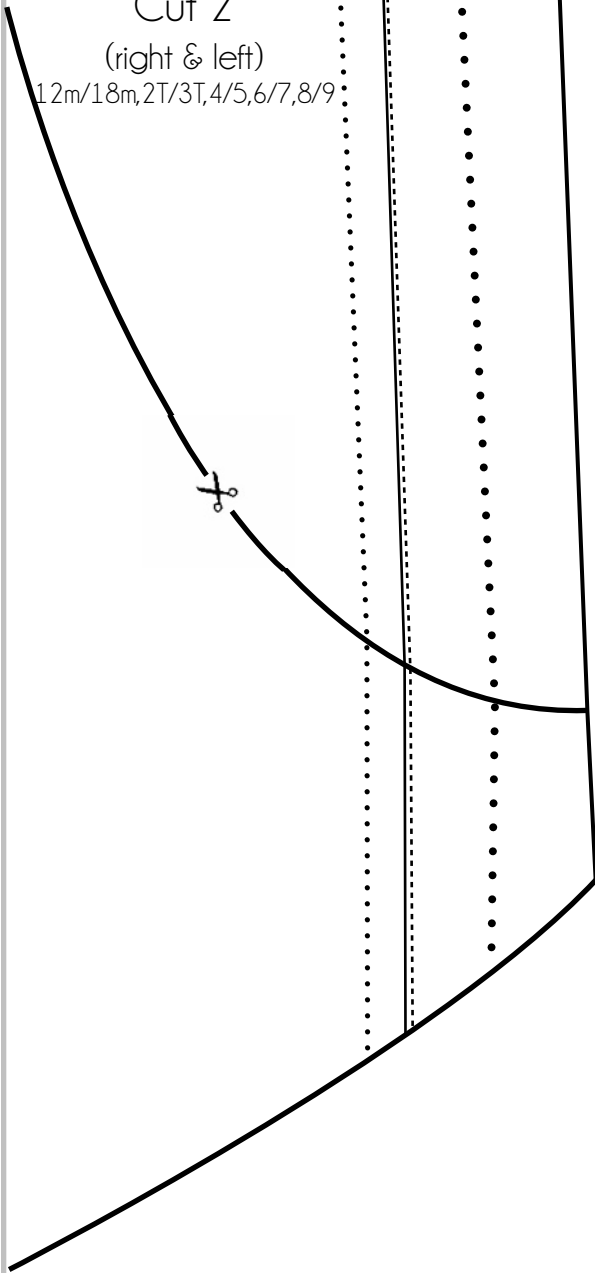




K

# E & E Patterns: PLEATED PLAYSUIT POCKET

Cut 2  
(right & left)  
12m/18m, 2T/3T, 4/5, 6/7, 8/9



## Instructions for Cutting Pocket and Pocket Lining

Tracing each pattern piece separately  
(Front Bodice, Back Bodice, Facing) and  
then cutting from fabric is recommended.

OR

1. Cut Front Bodice pattern piece
2. Cut Front Bodice from fabric
3. Cut Back Bodice pattern piece
4. Cut Back Bodice from fabric
5. Cut Facing pattern piece
6. Cut Facing from fabric

← cut here for Pocket Lining

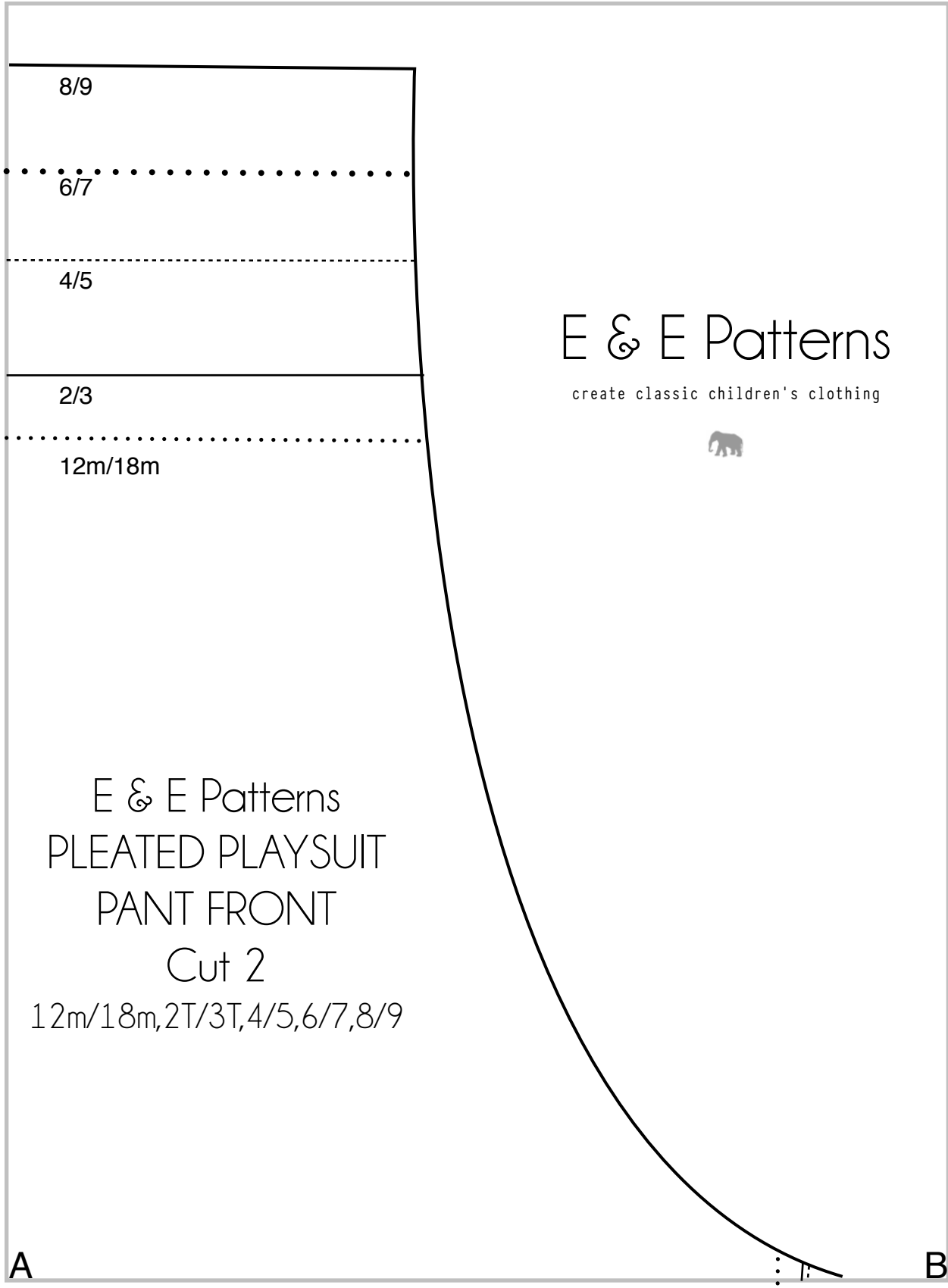


**Pocket - cut 2  
(right & left)**

**Pocket Lining - cut 2  
(right & left)**







8/9

6/7

4/5

2/3

12m/18m

E & E Patterns  
PLEATED PLAYSUIT  
PANT FRONT  
Cut 2  
12m/18m,2T/3T,4/5,6/7,8/9

E & E Patterns

create classic children's clothing



A

B

A

B

# E & E Patterns

create classic children's clothing



cut here for short length

D

E

D

E

# E & E Patterns

create classic children's clothing



12m

18m

2

3

4

5

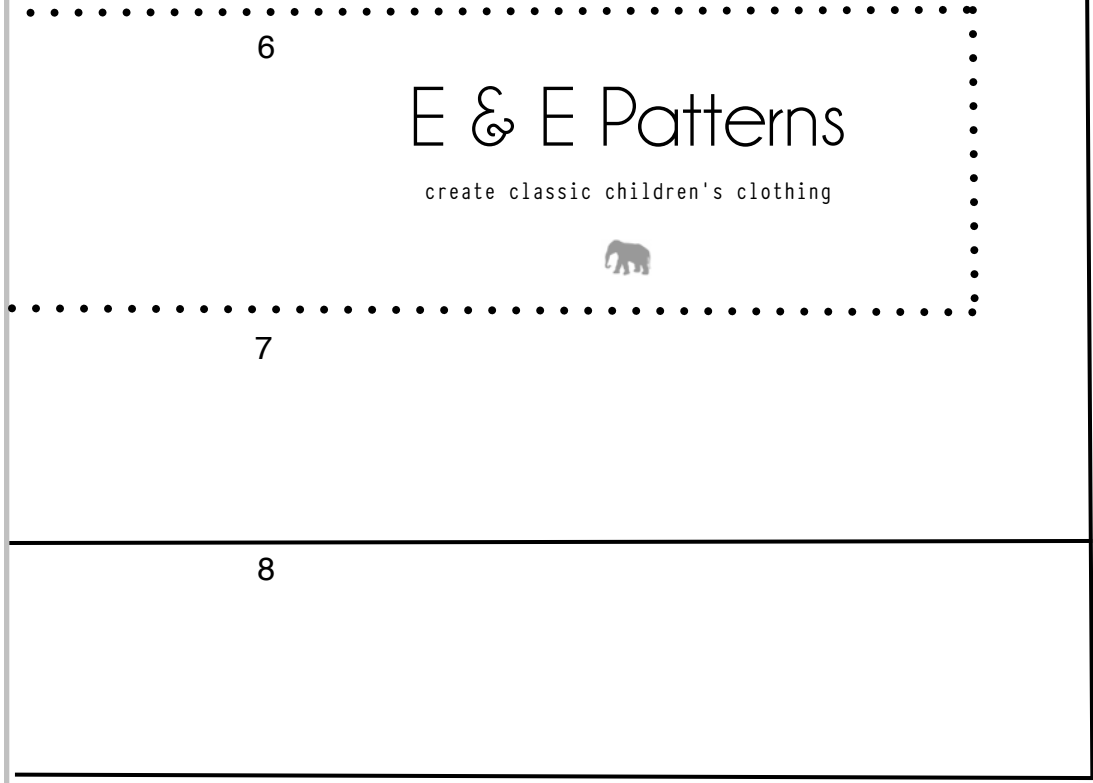
G

H



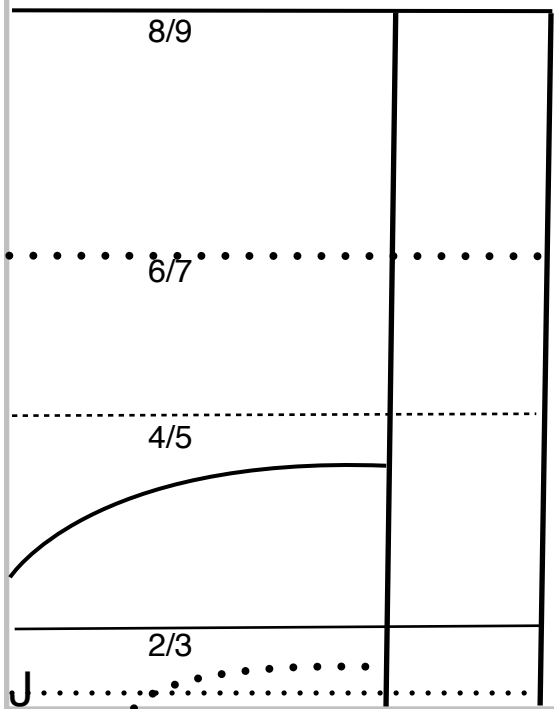
G

H

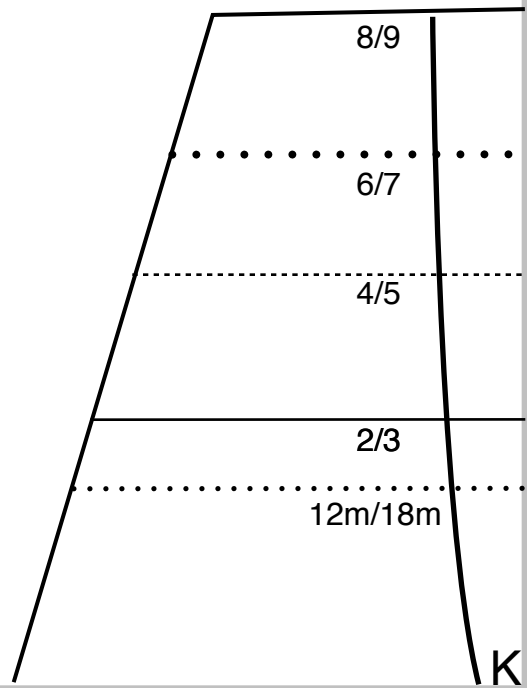


# E & E Patterns

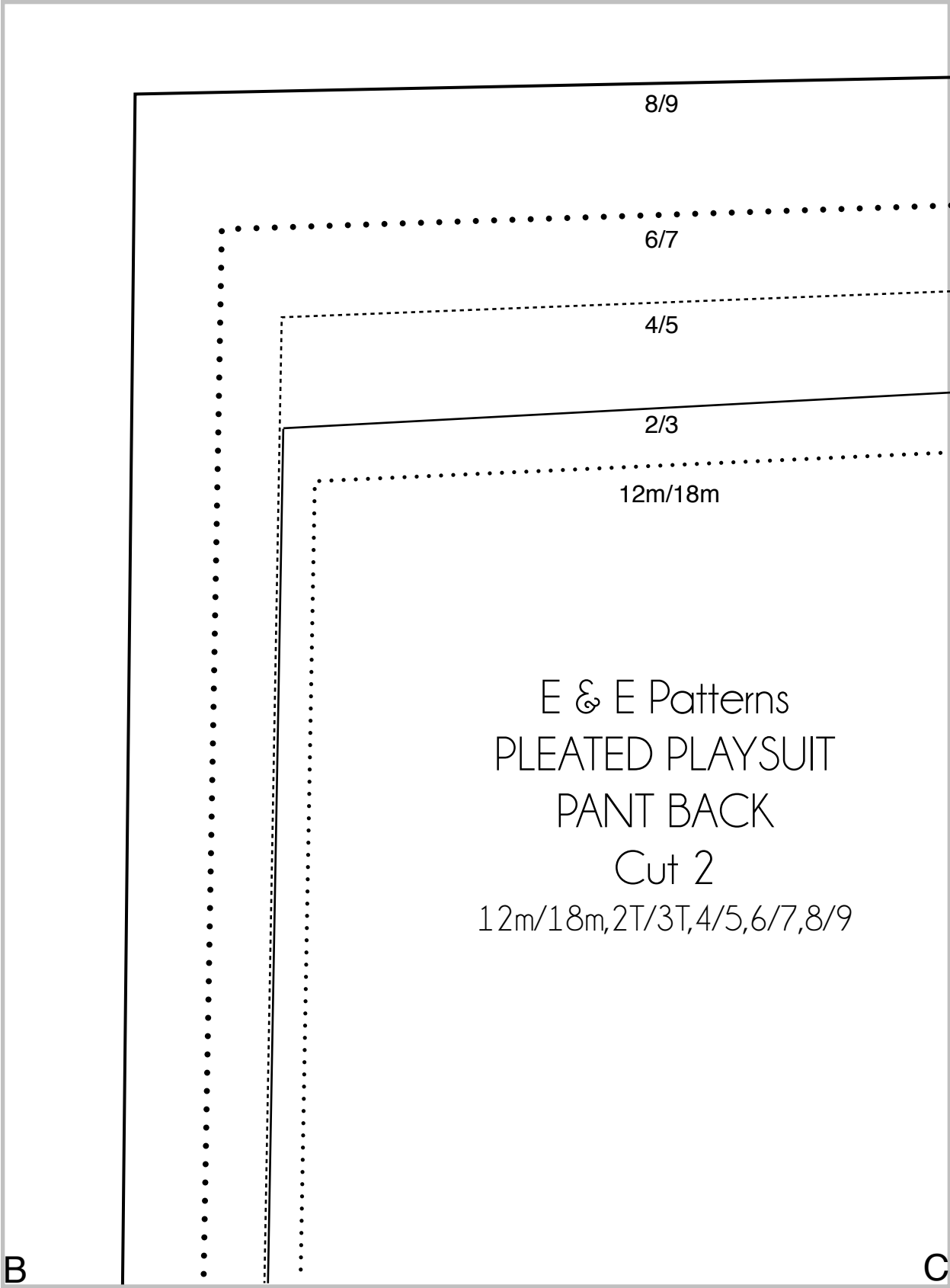
create classic children's clothing



J



K



E & E Patterns  
PLEATED PLAYSUIT  
PANT BACK  
Cut 2  
12m/18m, 2T/3T, 4/5, 6/7, 8/9

B

C

# E & E Patterns

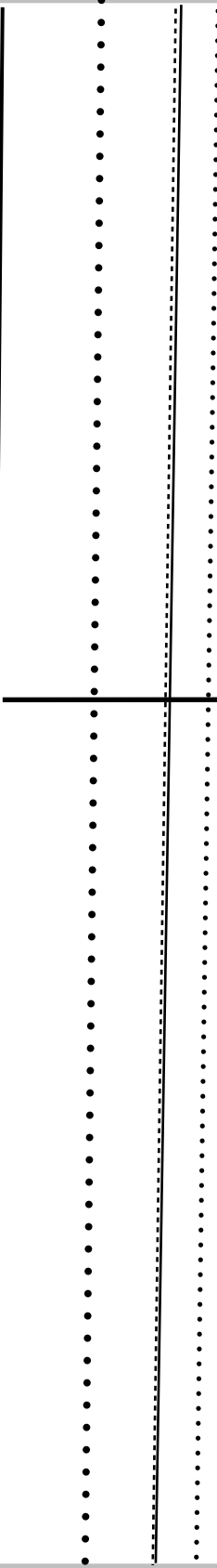
create classic children's clothing



cut here for short length

E

F





E

F

# E & E Patterns

create classic children's clothing



12m

18m

2

3

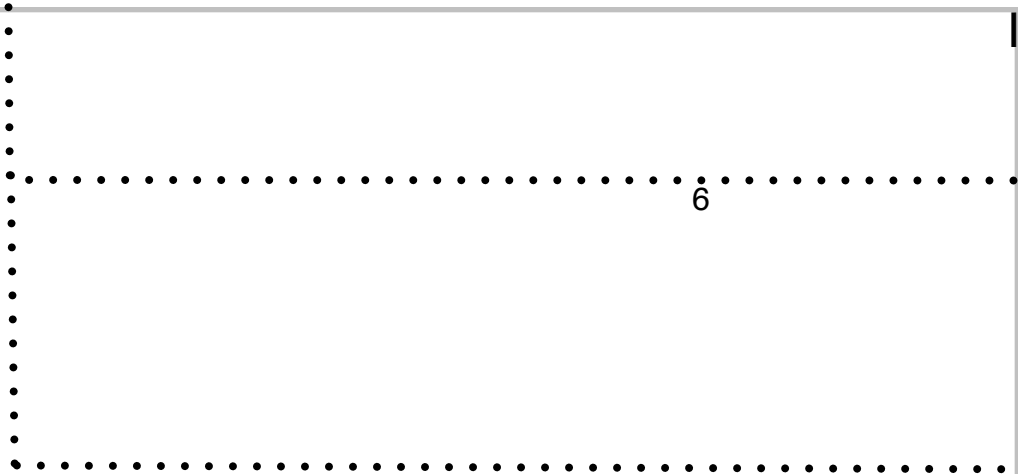
4

5

H

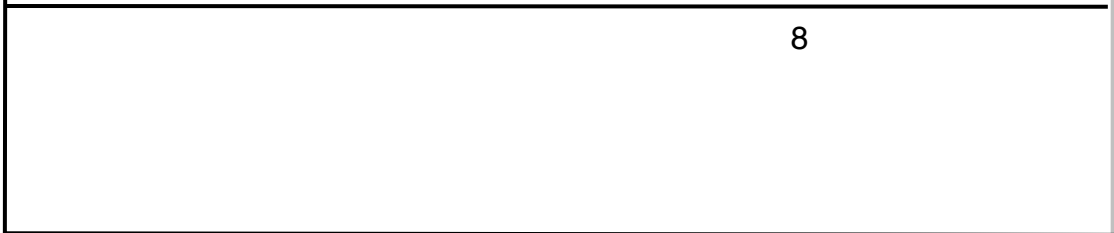
I

H



6

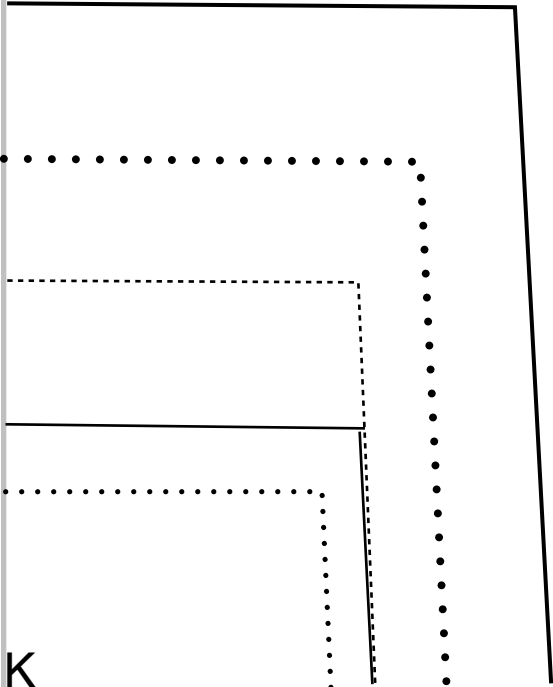
7



8



9



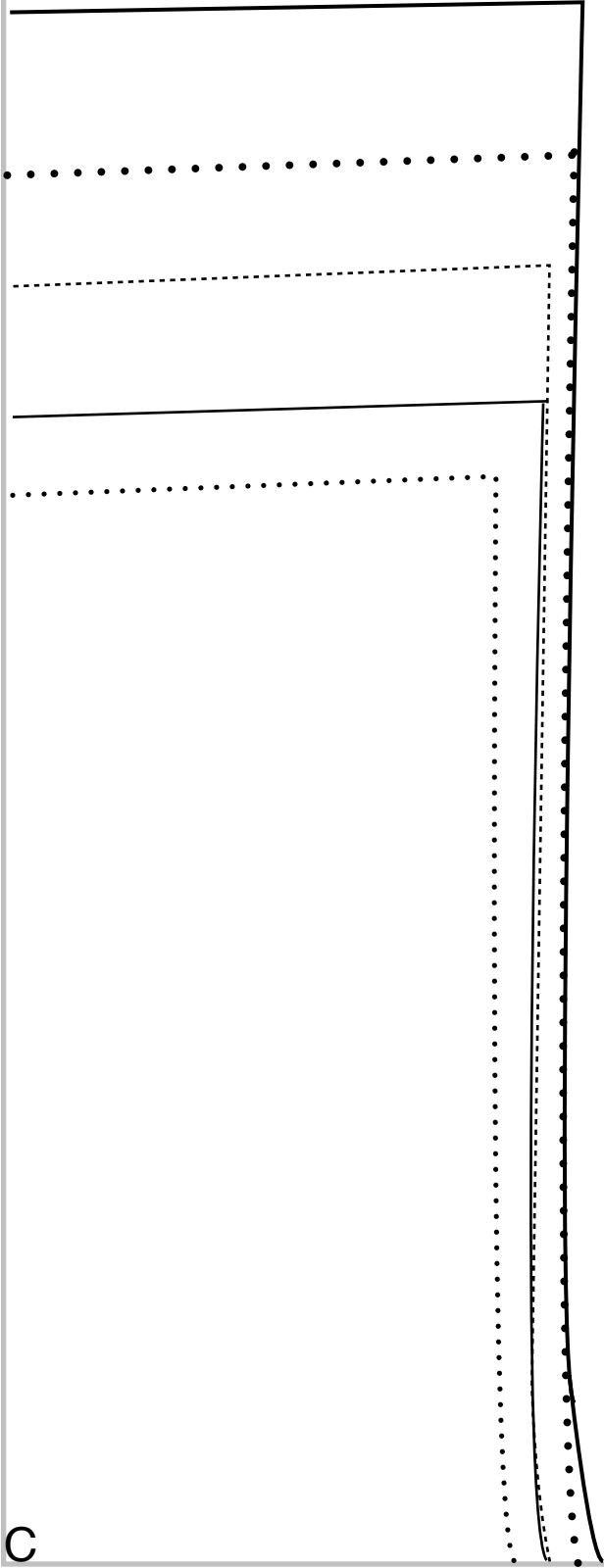
K

L

# E & E Patterns

create classic children's clothing





# E & E Patterns

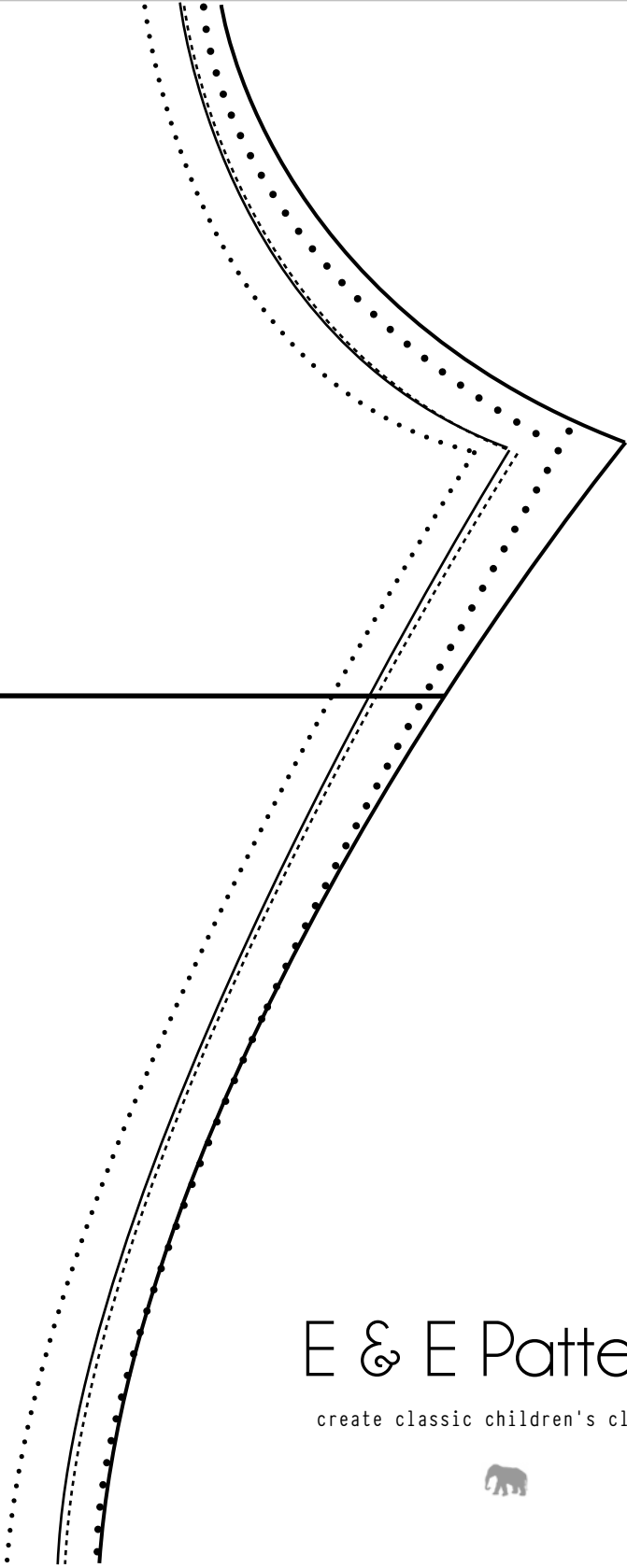
create classic children's clothing



C



C



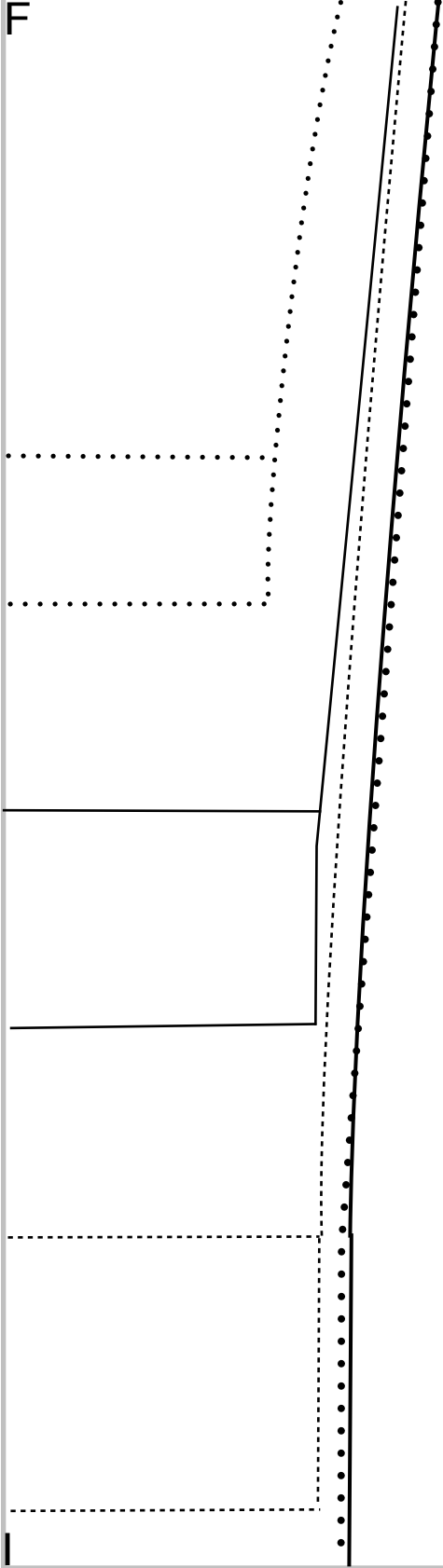
F

# E & E Patterns

create classic children's clothing



F



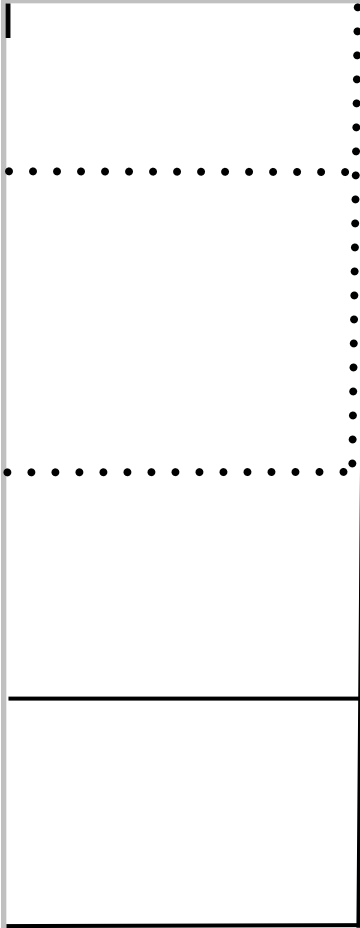
# E & E Patterns

create classic children's clothing



# E & E Patterns

create classic children's clothing



Additional Self-Drafted Pieces					
	12m/18m	2/3	4/5	6/7	8/9
Shoulder Ties cut 4	1" X 17" 2.5cmX43cm				
Leg Cuffs (short pant) cut 2	2"X13" 5cmX33cm	2"X13" 5cmX33cm	2"X13.5" 5cmX34.5cm	2"X14" 5cmX35.5cm	2"X14.5" 5cmX37cm
Leg Cuffs (long pant) cut 2	2"X9" 5cmX23cm	2"X9" 5cmX23cm	2"X9.5" 5cmX24cm	2"X10.5" 5cmX25cm	2"X11.25" 5cmX26.5cm
Elastic* (1/2"/1.2cm wide)	19.5" 49.5cm	20.5" 52cm	21.5" 54.5cm	22.5" 57.25cm	23.5" 59.75cm
* or 1.5" (4cm) less than child's waist measurement					