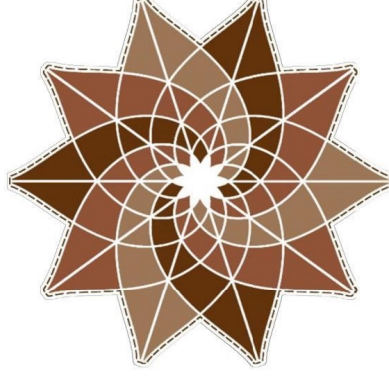


STONE STREET STITCHWORKS

WINTERLAND WAY



Details:

Design Size: 159W x 188H

Stitched Size: 9.9" x 11.8" at 16 stitches per inch

Fabric: Your choice! The model was stitched on 32-count evenweave over two threads.

Chart: The chart is divided into four sections as seen in the page layout diagram on the right. Grayed out rows/columns are duplicated from the previous page and should not be stitched.

Threads: DMC. The pattern is stitched using two strands of thread per color. Blended colors (noted on the chart) require one thread of each color listed.

1	2
3	4

	DMC	Description
○	154	Grape (very dark)
↘	315	Antique Mauve (medium dark)
+	500	Blue Green (very dark)
↙	501	Blue Green (dark)
▽	502	Blue Green
□	738	Tan (very light)
●	924	Gray Green (very dark)
◎	926	Gray Green (medium)
✕	930	Antique Blue (dark)
■	939	Navy Blue (very dark)
*	3021 + 930 (blend)	Brown Gray (very dark) + Antique Blue (dark)
▲	3371	Black Brown
◆	3750 + 3371 (blend)	Antique Blue (very dark) + Black Brown
★	3768	Gray Green (dark)
◇	3772	Desert Sand (very dark)
♥	3777	Terra Cotta (very dark)
✂	3860	Cocoa
—	Ecrú	Ecrú

E-mail: StoneStreetStitchworks@gmail.com

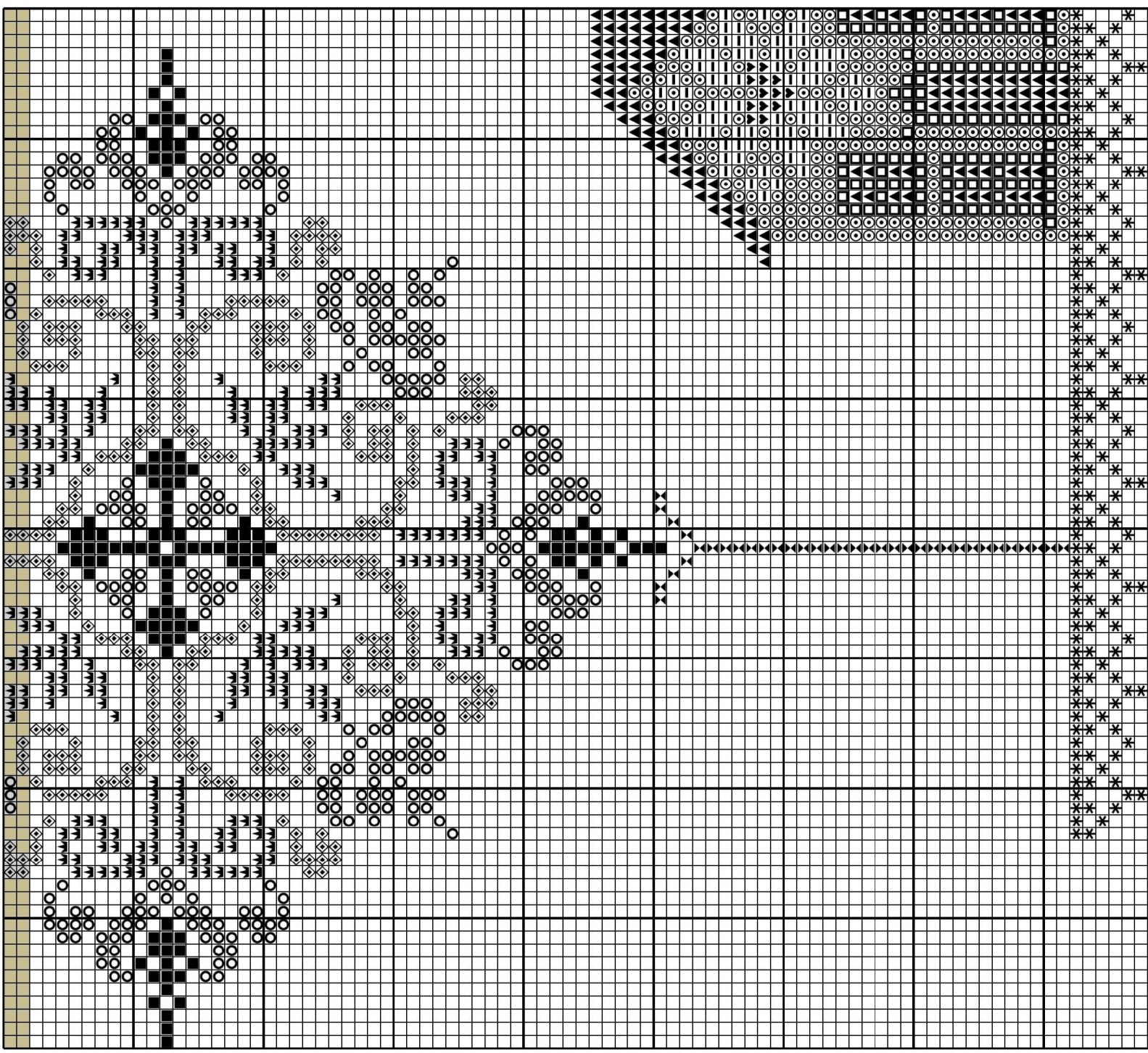
Etsy: <https://www.etsy.com/shop/StoneStreetStitch>

Instagram: @StoneStreetStitchworks

Copyright: © 2017 Salma Dube, Stone Street Stitchworks. All rights reserved, *provided that*, all or any part of this chart, pattern, color key, instructions and logos (collectively, this "Pattern") may be printed and/or copied for personal use only. Without limiting the rights of the copyright reserved above, this Pattern—whether digital or printed—may **NOT** be (i) uploaded online for others to view; (ii) gifted or resold if you keep a copy for yourself; (iii) reproduced, shared, or distributed for any non-personal use; and/or (iv) kitted in any manner without permission.

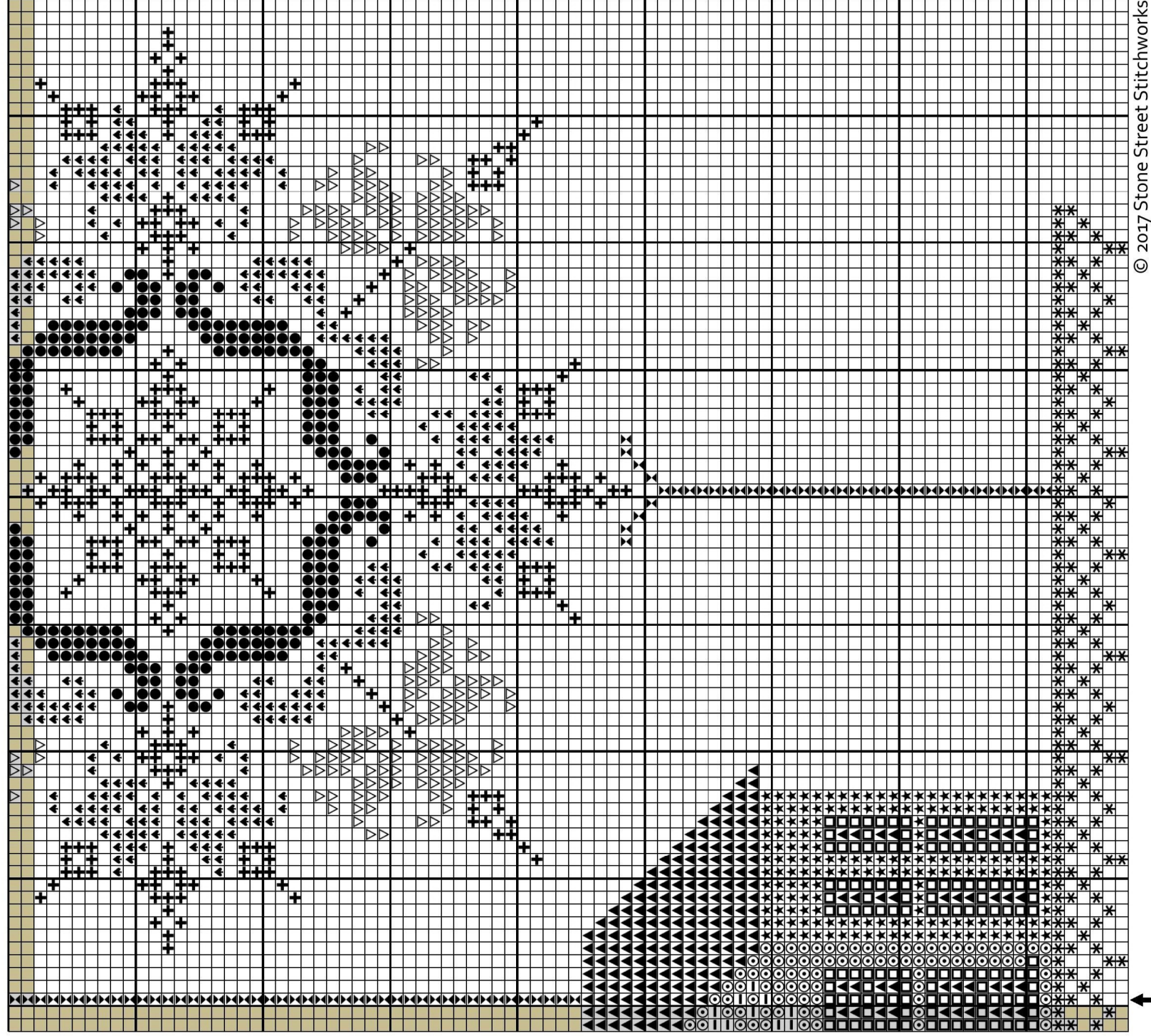
WINTERLAND WAY BY STONE STREET STITCHWORKS

(SECTION 3 OF 4)

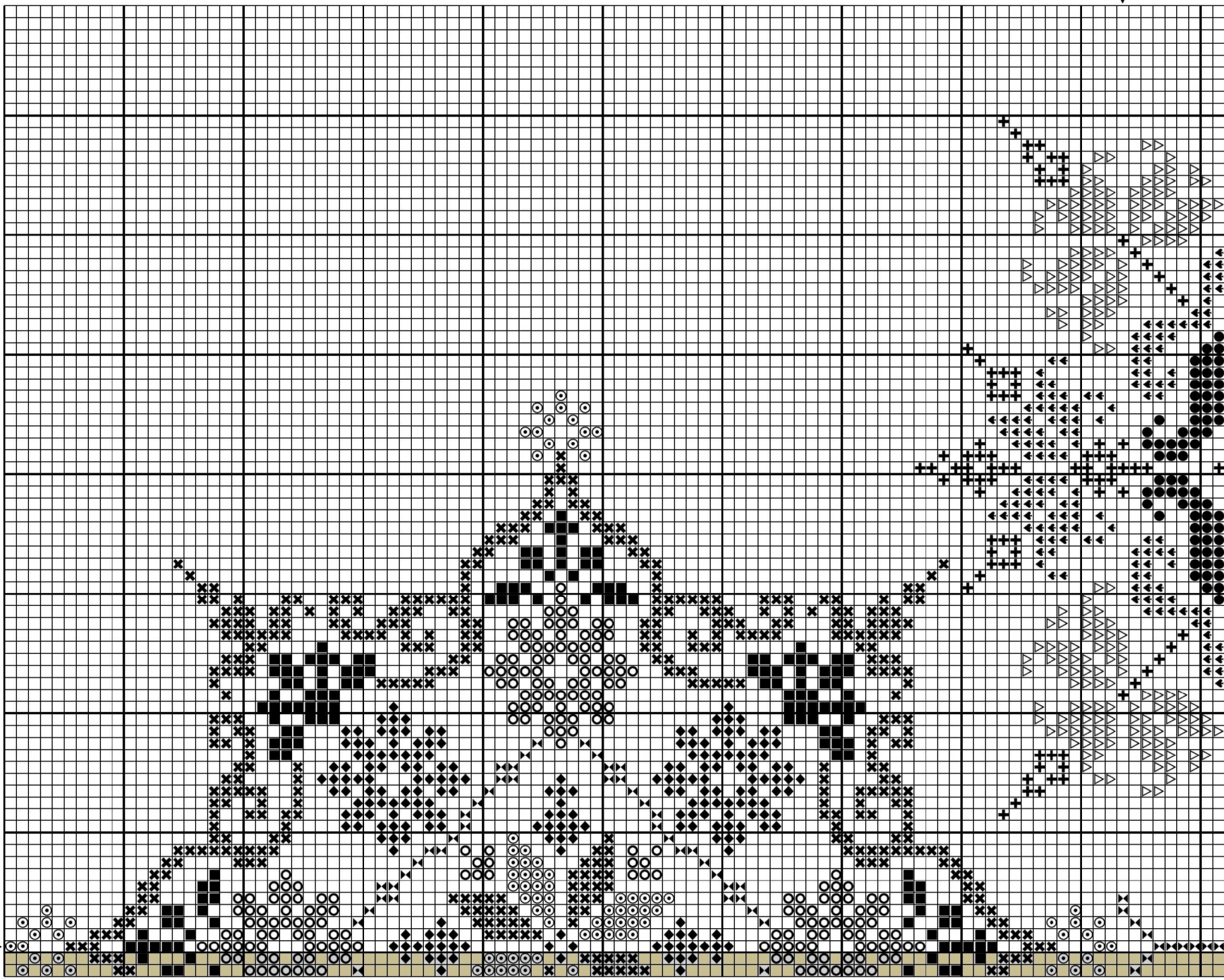


WINTERLAND WAY BY STONE STREET STITCHWORKS

(SECTION 4 OF 4)



WINTERLAND WAY BY STONE STREET STITCHWORKS (SECTION 2 OF 4)



WINTERLAND WAY BY STONE STREET STITCHWORKS

(SECTION 1 OF 4)

