

OLIVE MIDI PATTERN

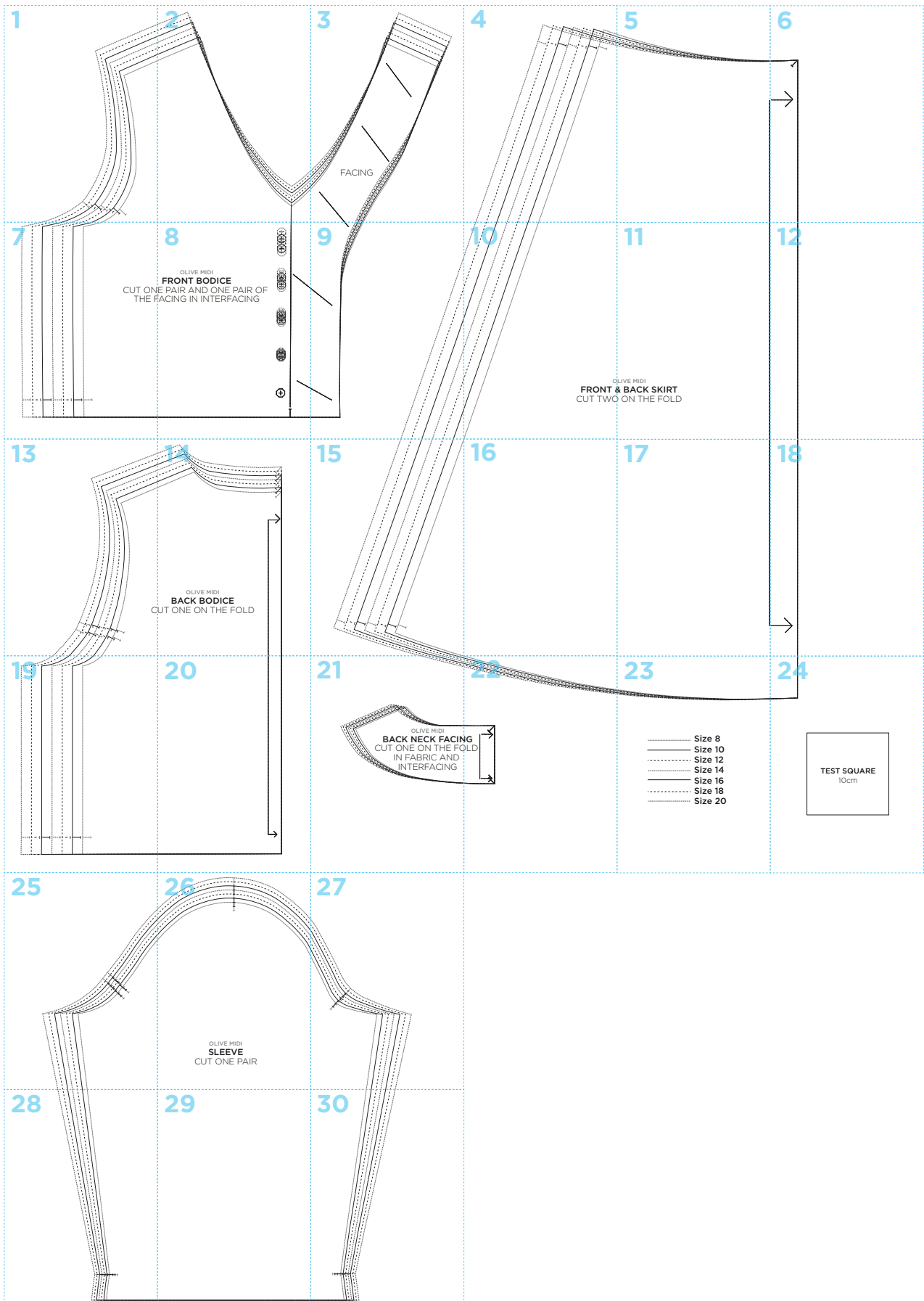
Use these guides to get started today

IN YOUR PRINT MENU, UNDER SIZE OPTIONS, BE SURE TO
SELECT '**ACTUAL SIZE**', INSTEAD OF 'FIT TO PAGE'

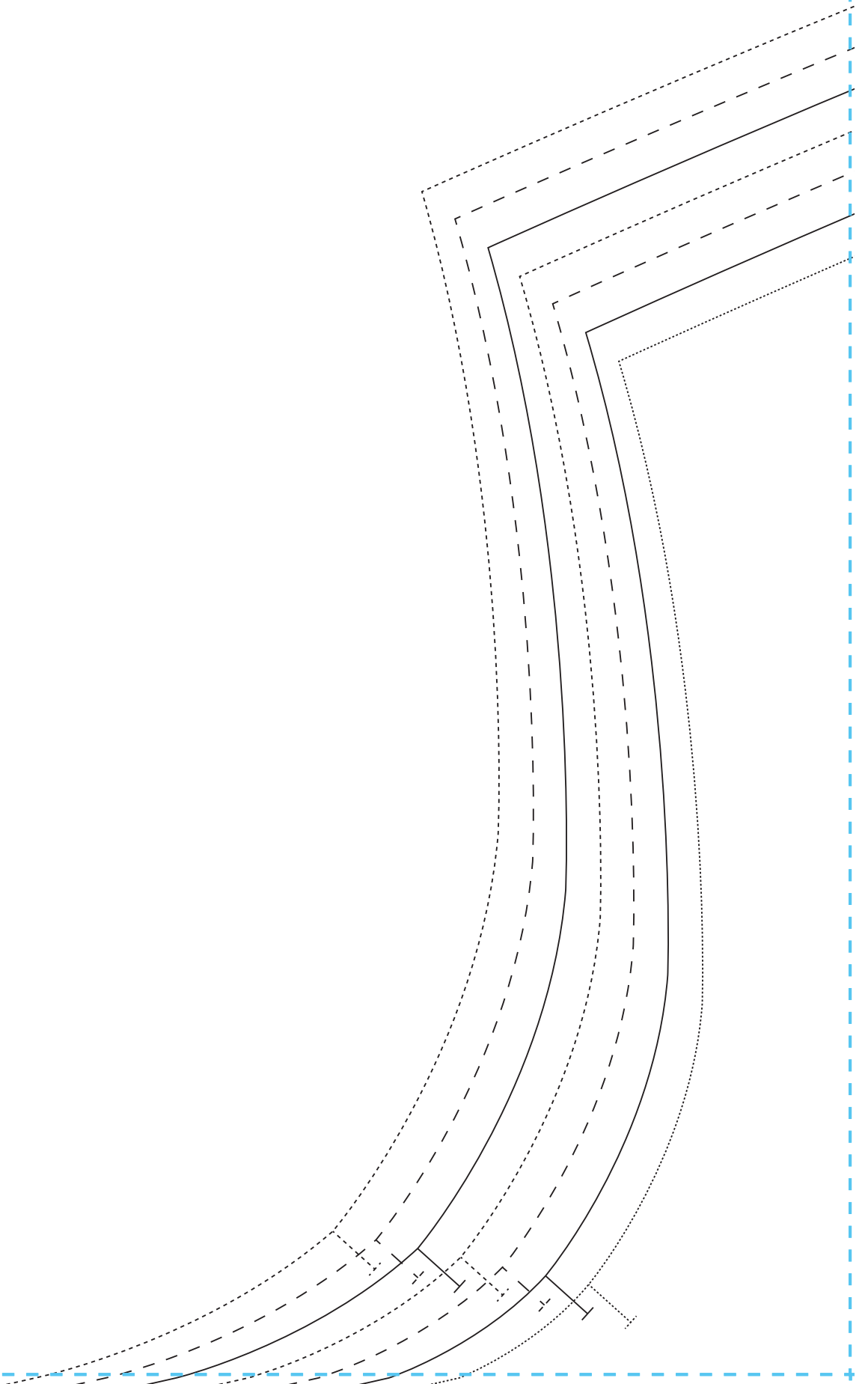
Title: Olive Midi
Designer: Amanda Walker
Magazine page: 26



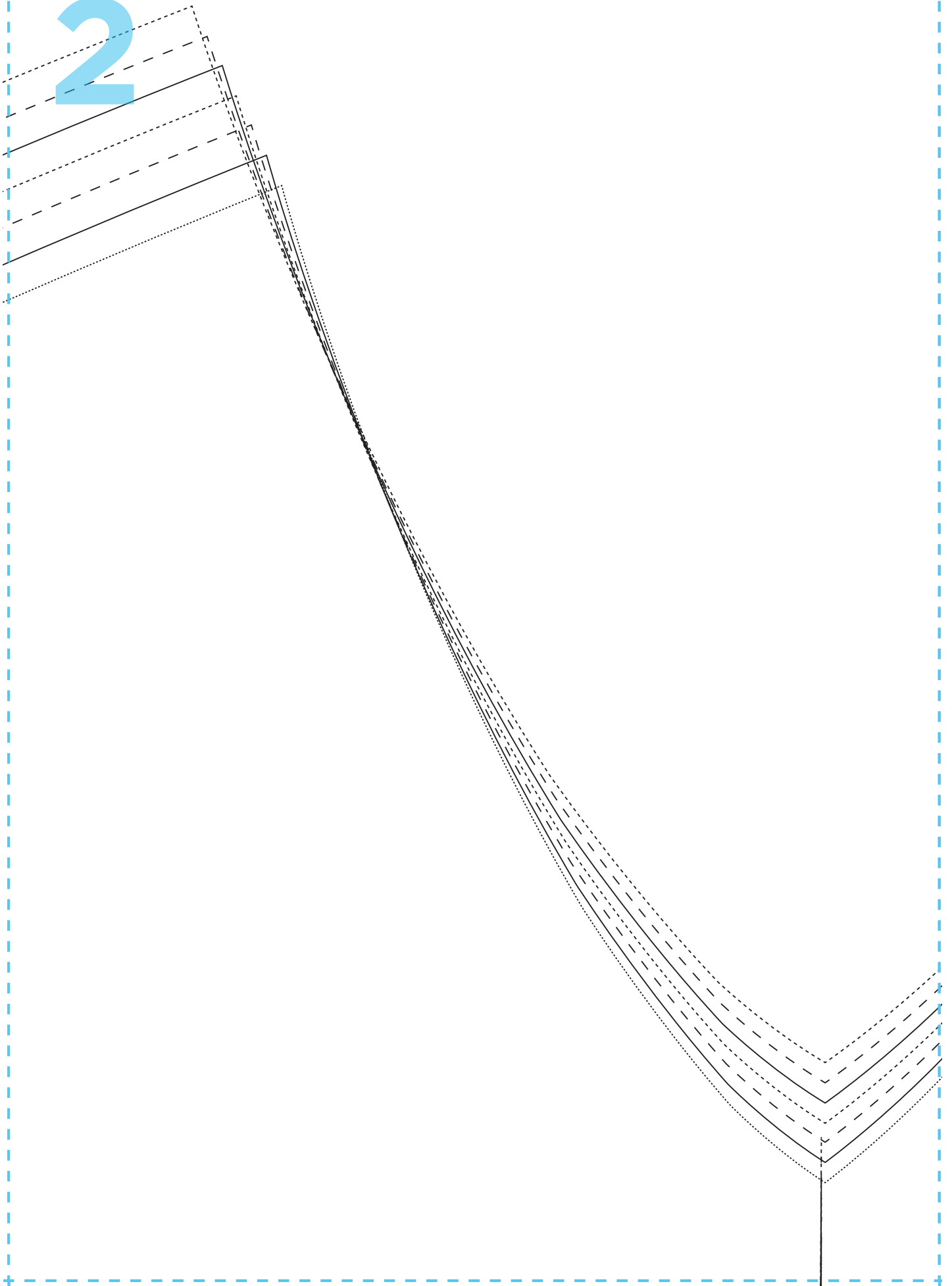
OLIVE MIDI PATTERN LAYOUT



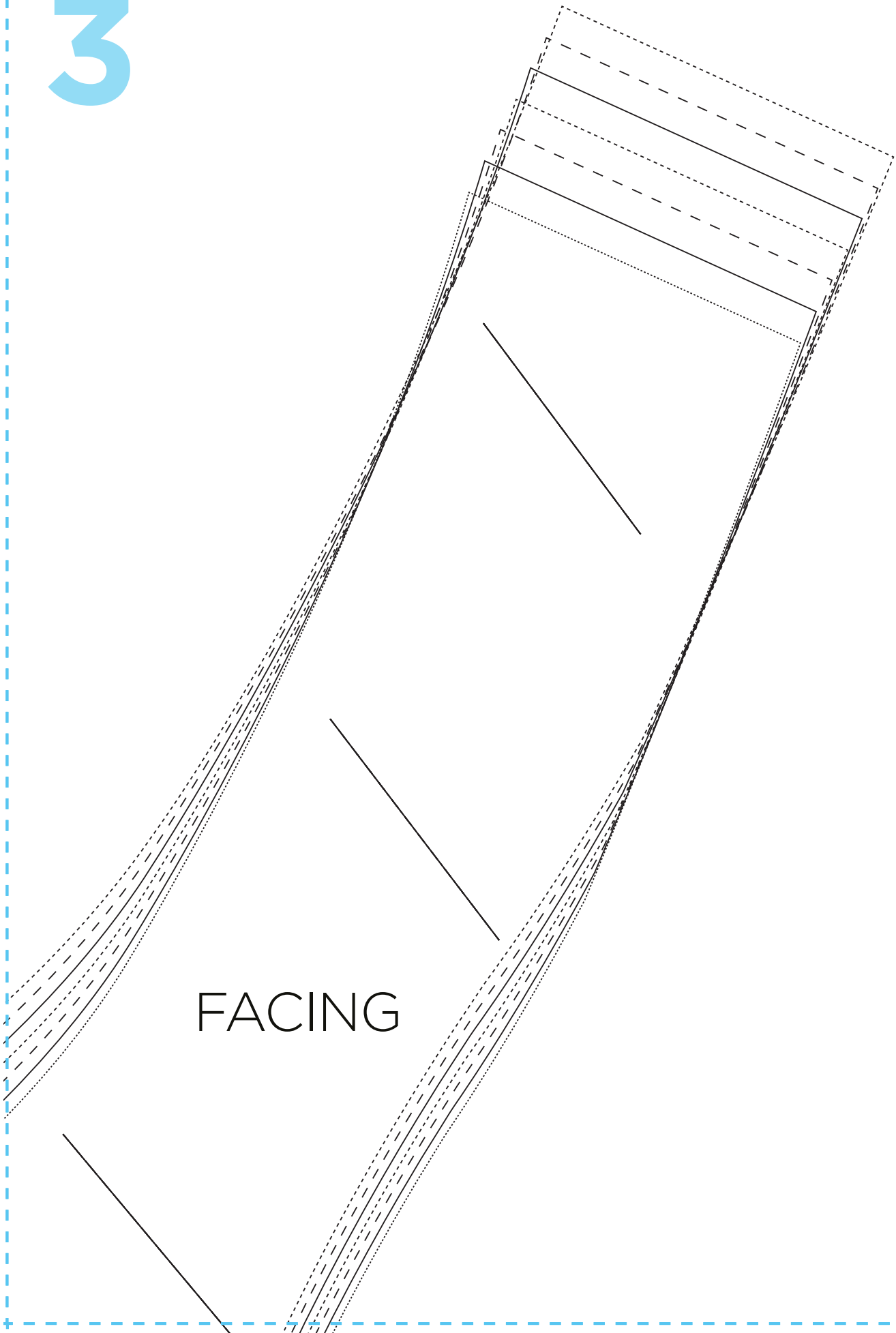
1



2

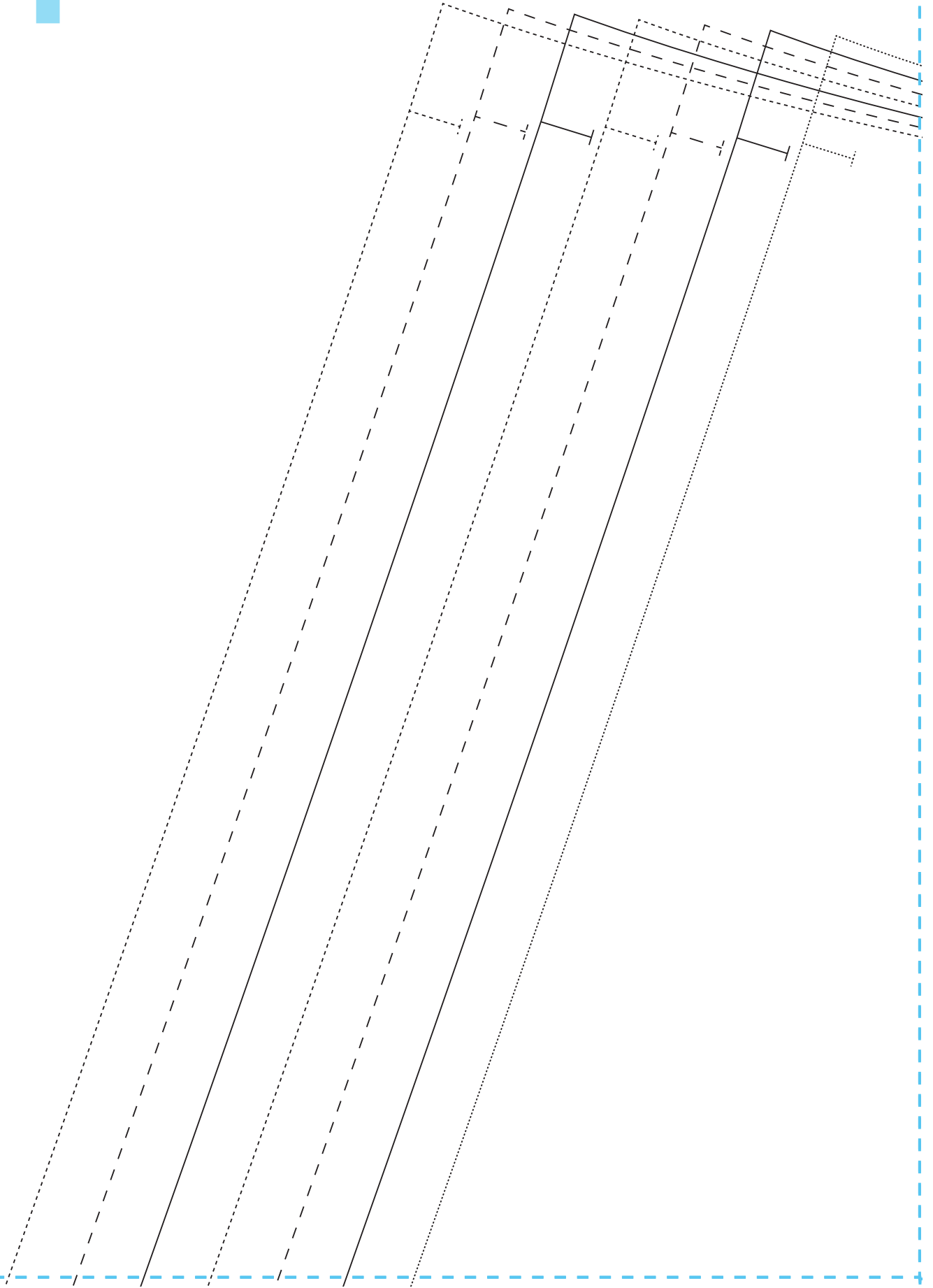


3

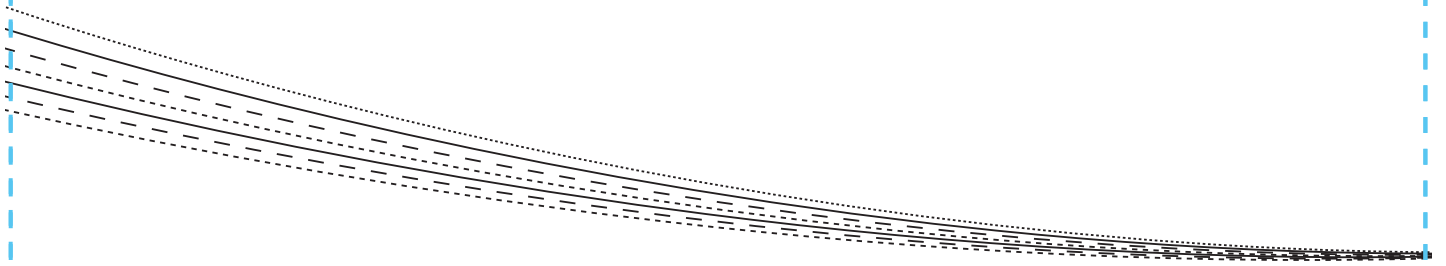


FACING

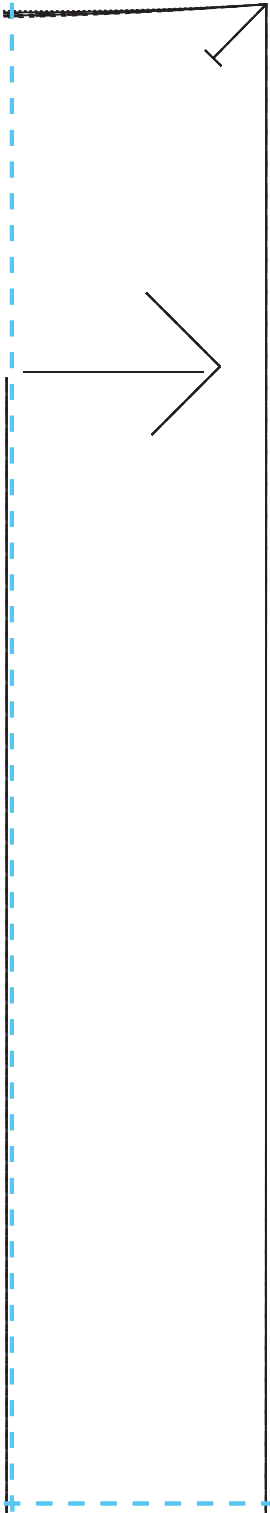
4



5

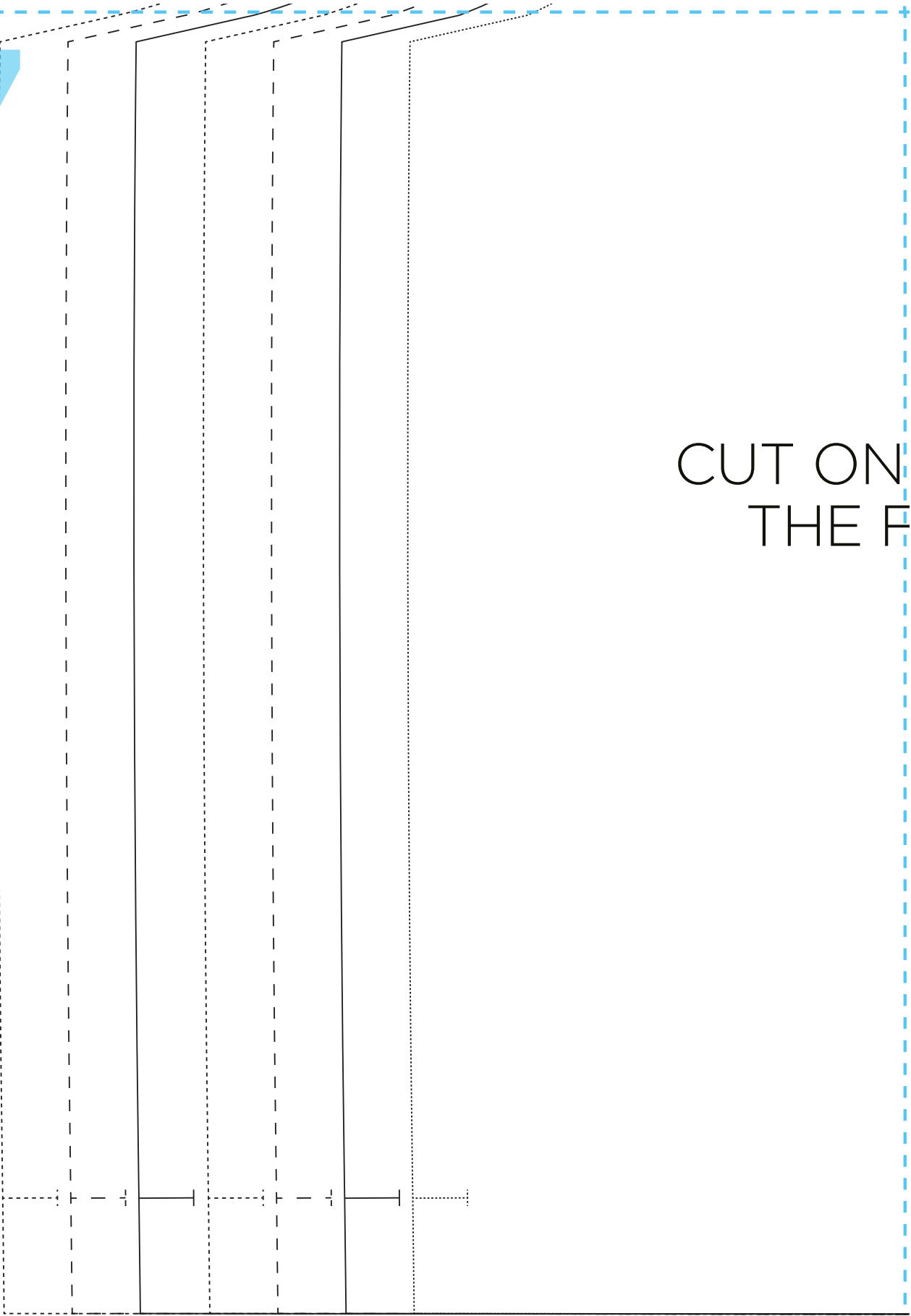


6



7

CUT ON
THE F

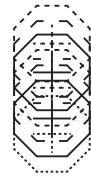


8

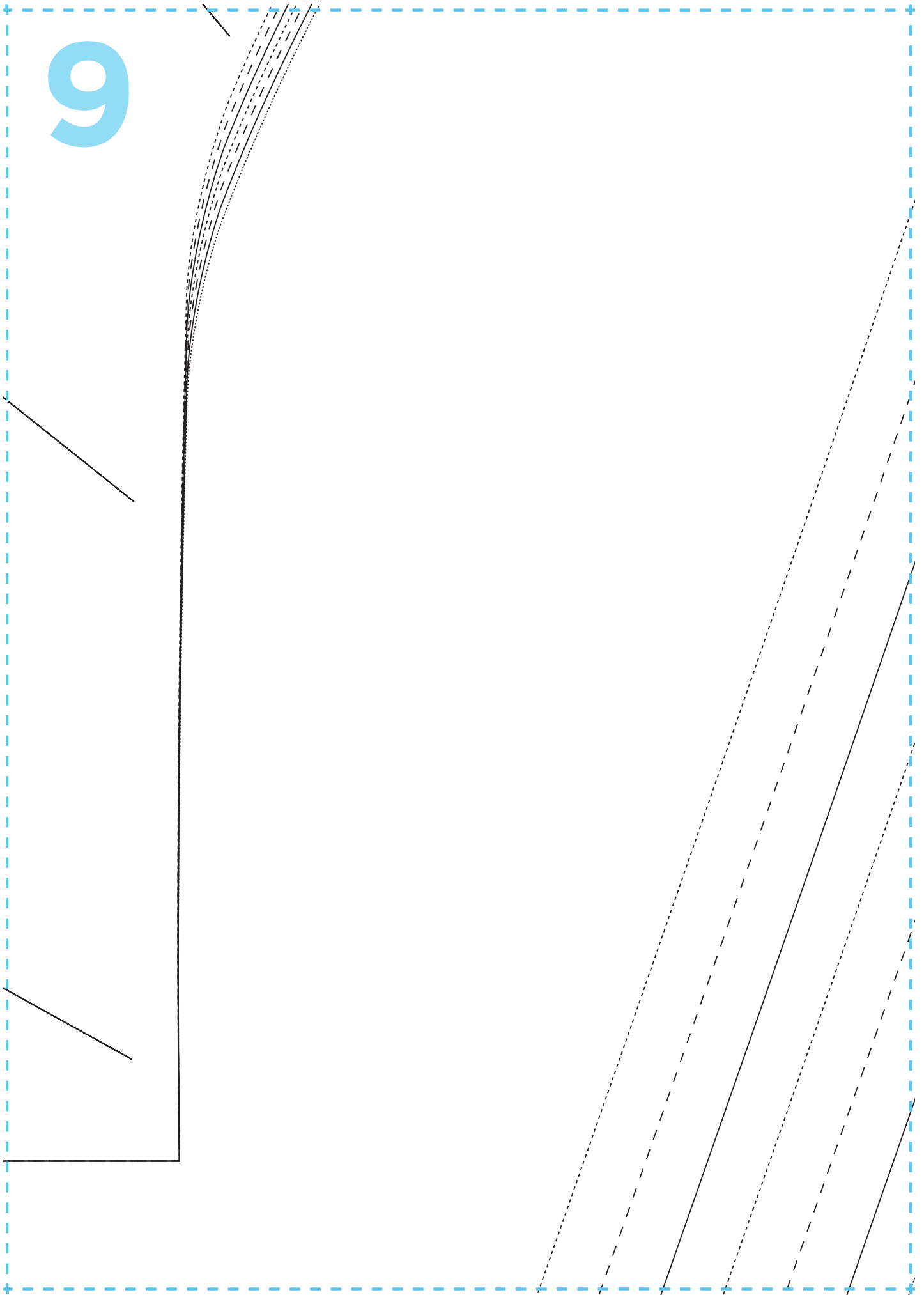
OLIVE MIDI

FRONT BODICE

ONE PAIR AND ONE PAIR OF
FACING IN INTERFACING



9



10

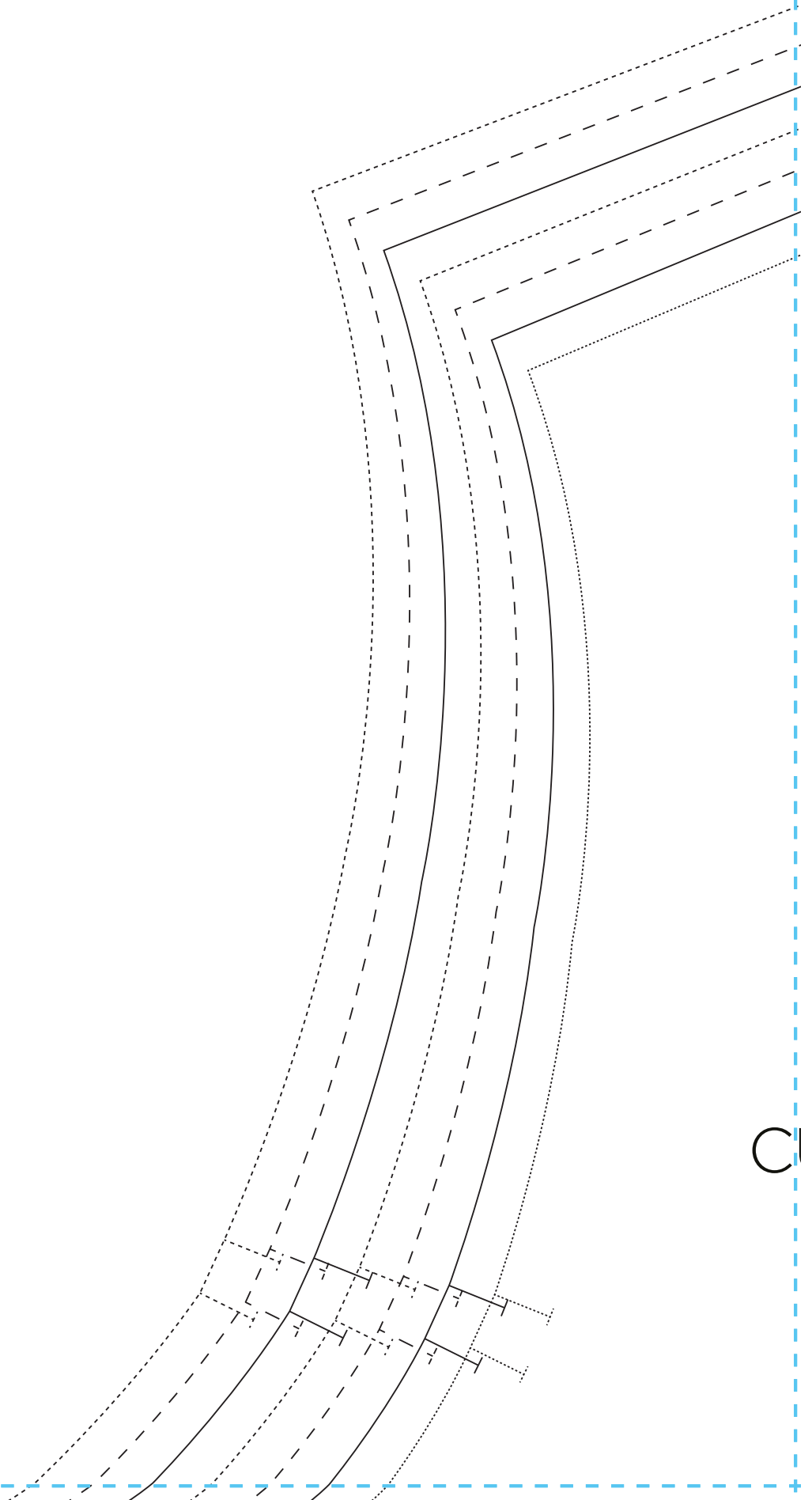
o
FRONT &
CUT TWO

11

LIVE MIDI
& **BACK SKIRT**
ON THE FOLD

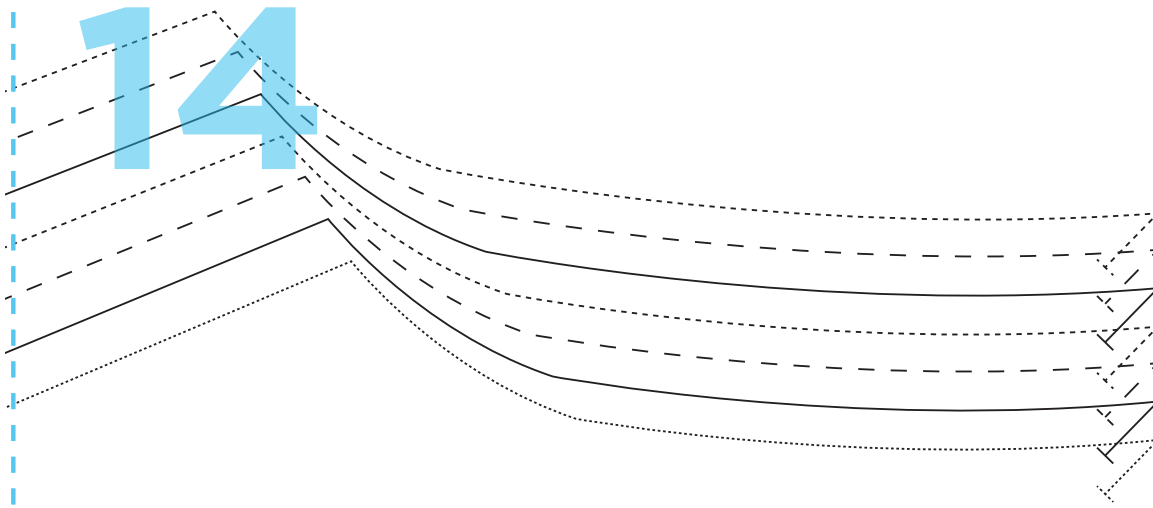
12

13



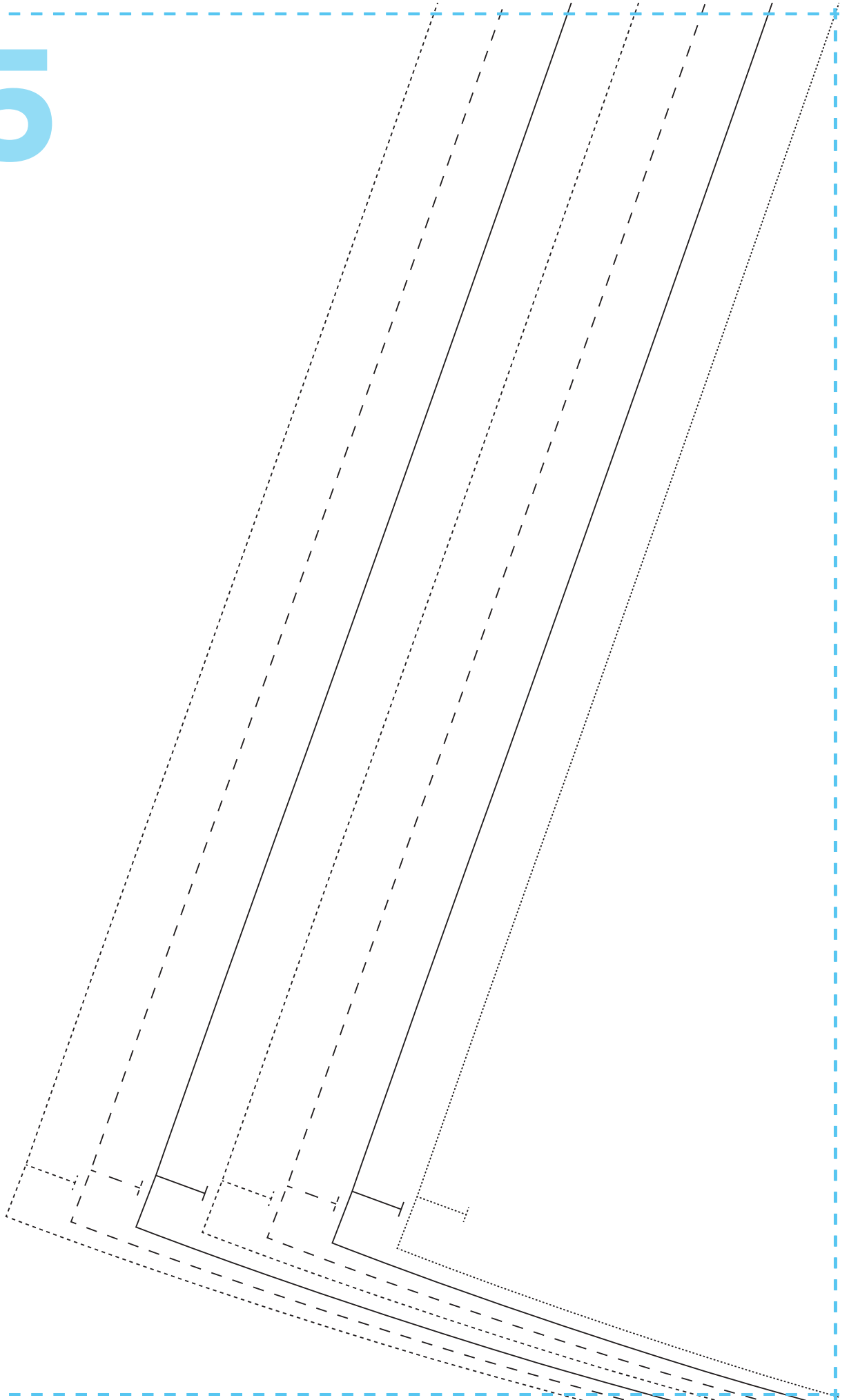
C

14



OLIVE MIDI
BACK BODICE
CUT ONE ON THE FOLD

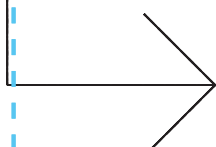
15



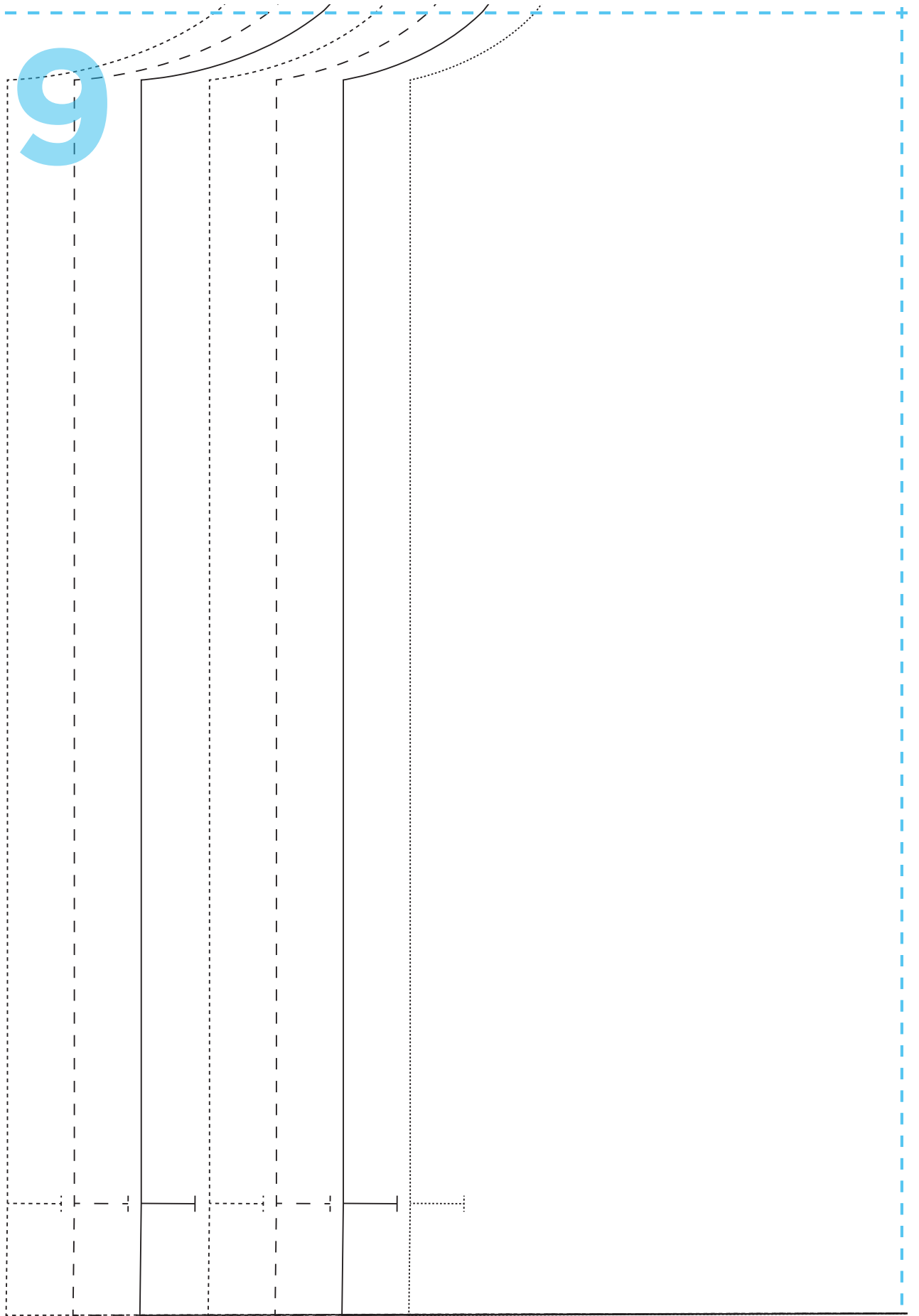
16

17

18



19



20



21

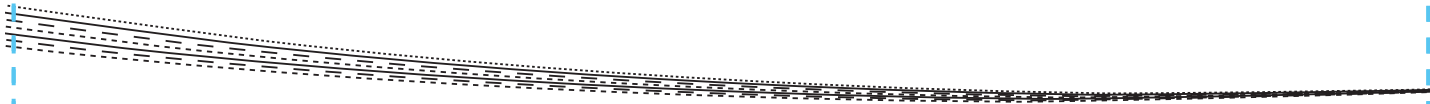


OLIVE MIDI
BACK NECK FACING
CUT ONE ON THE FC
IN FABRIC AND
INTERFACING

22



23

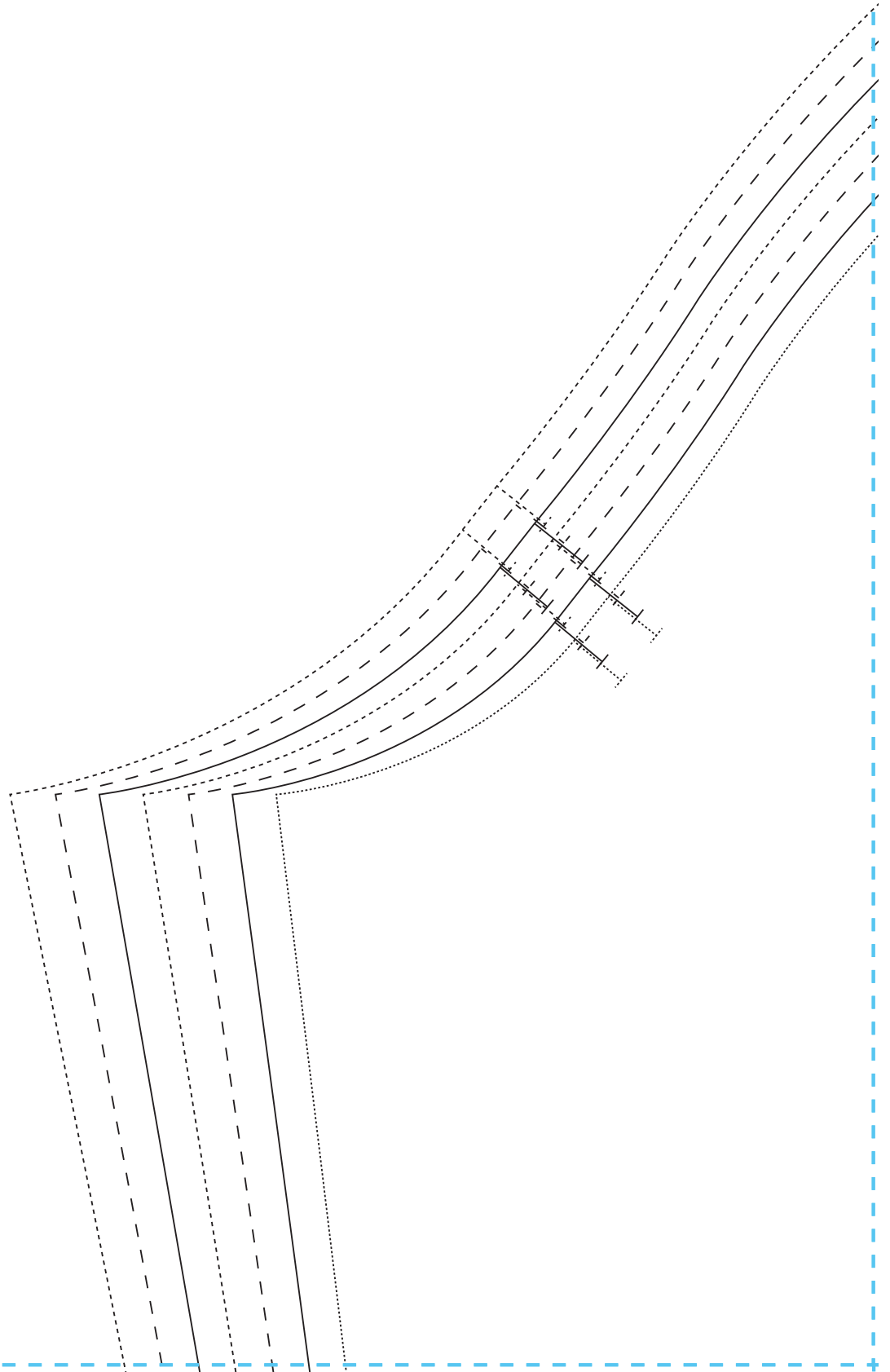


- **Size 8**
- **Size 10**
- - - - - **Size 12**
- **Size 14**
- **Size 16**
- - - - - **Size 18**
- **Size 20**

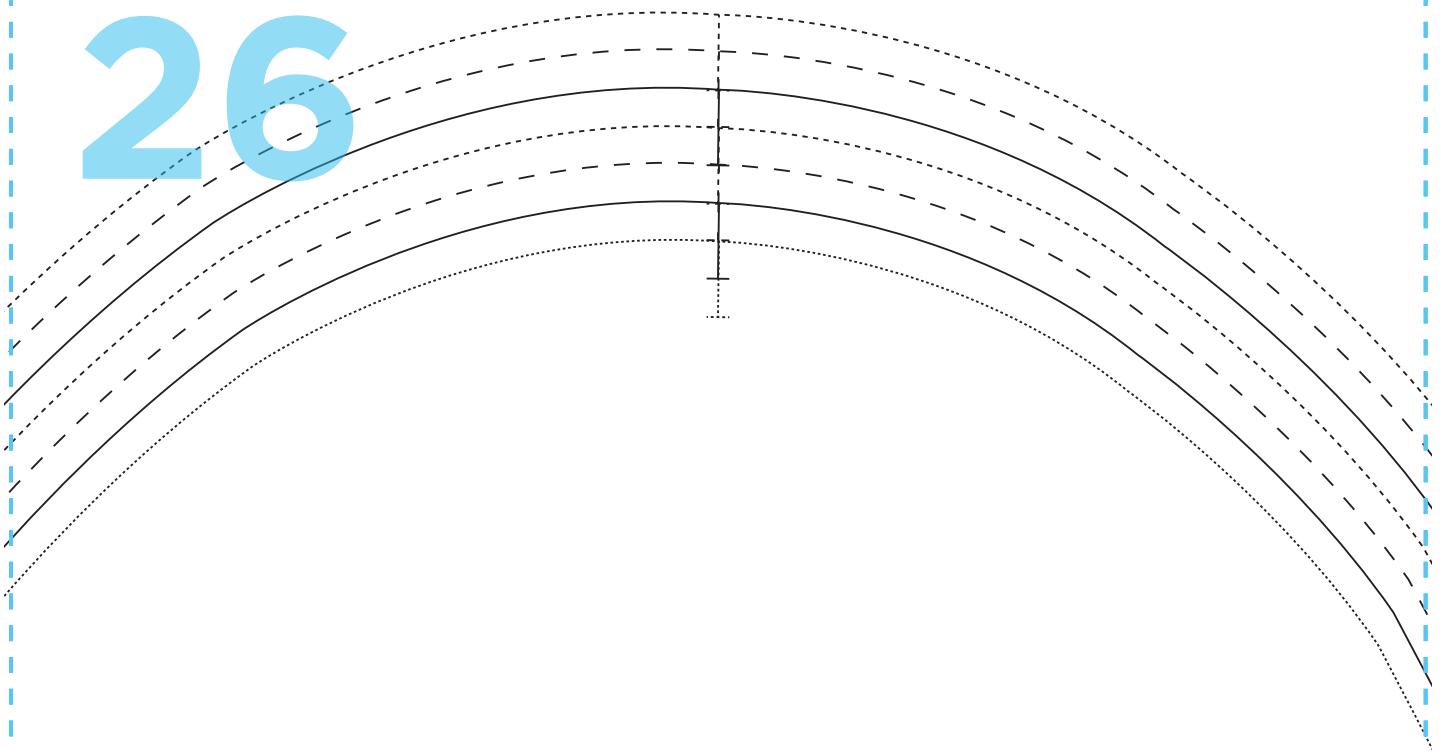
24

TEST SQUARE
10cm

25

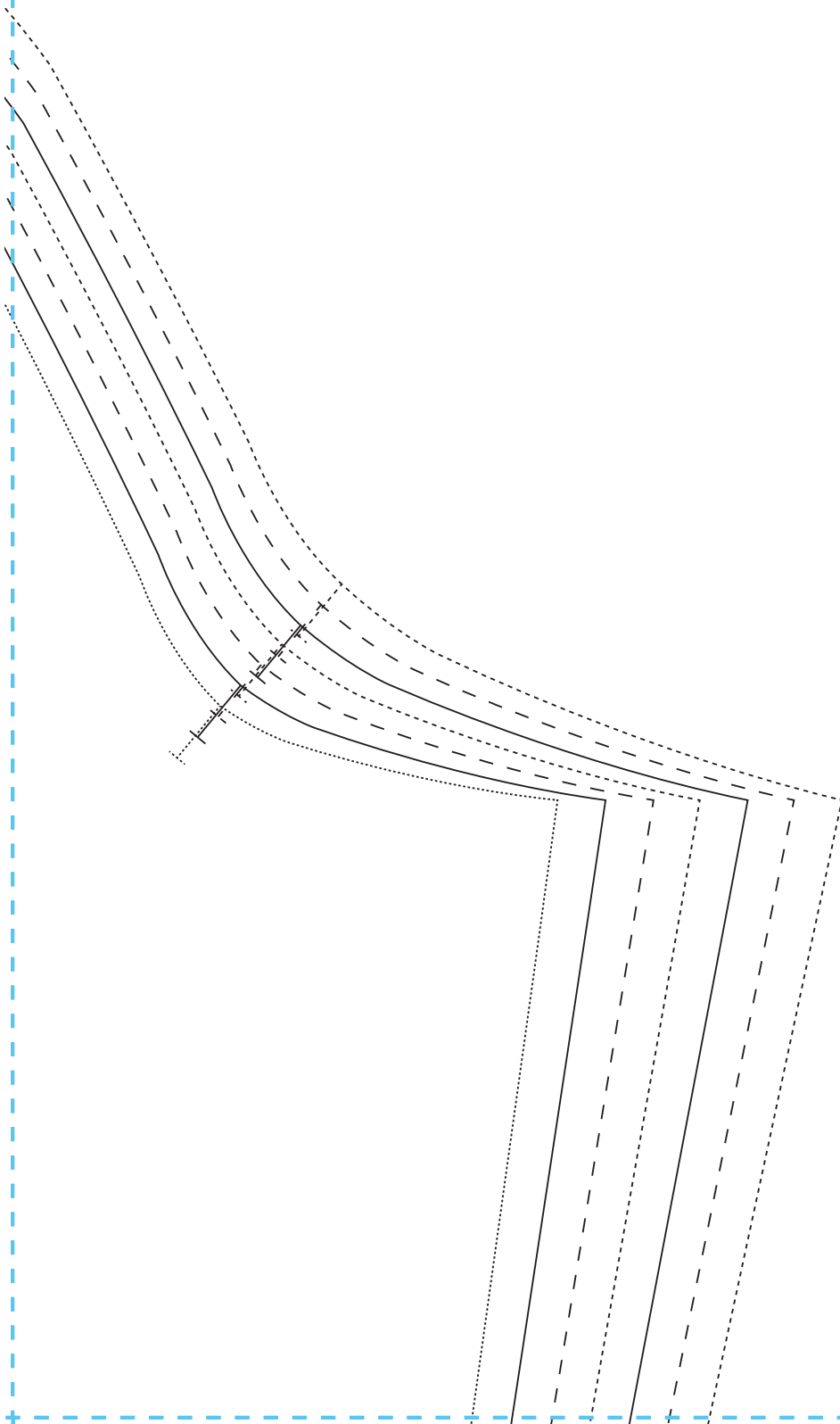


26

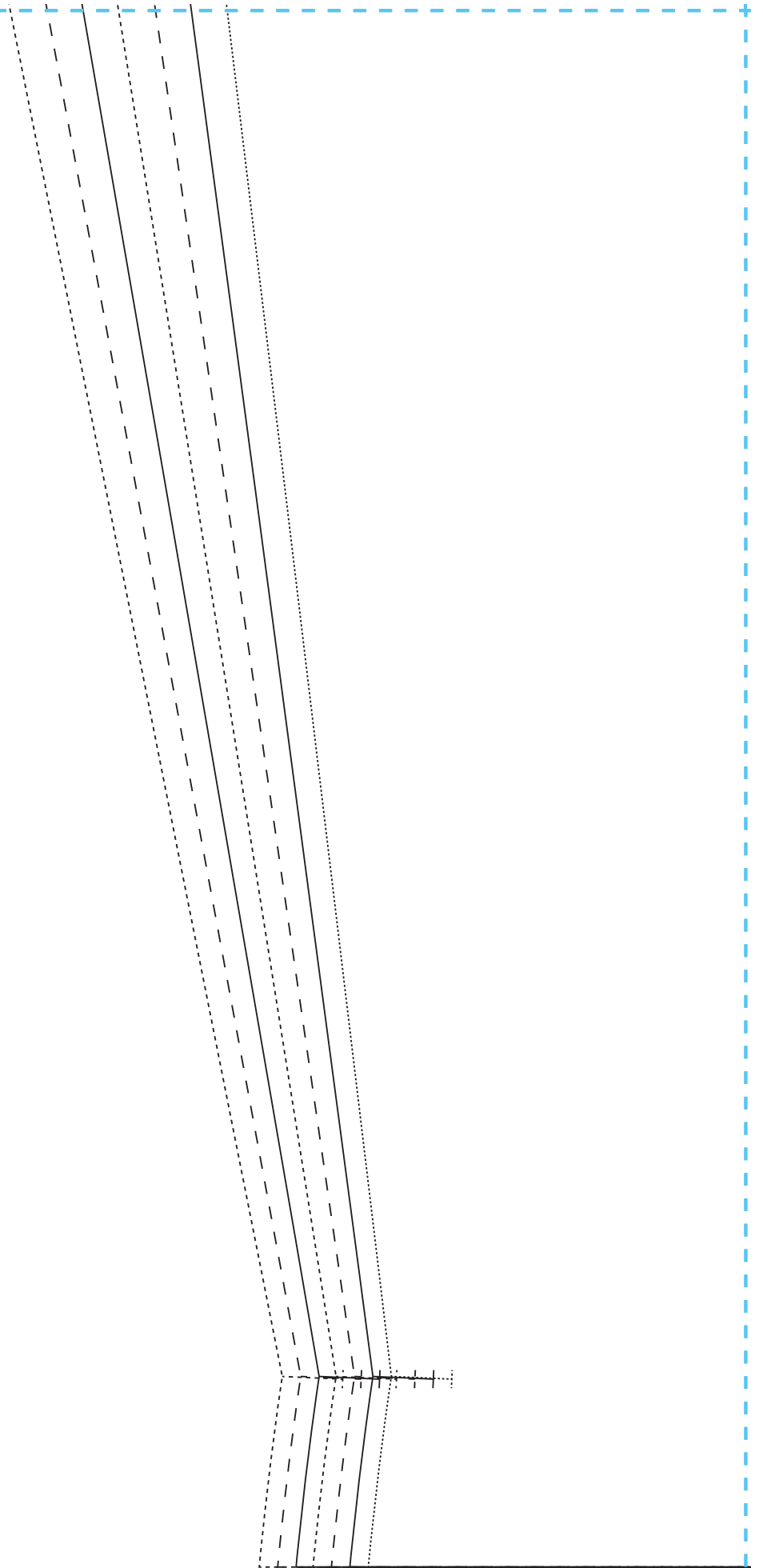


OLIVE MIDI
SLEEVE
CUT ONE PAIR

27



28



29

30

