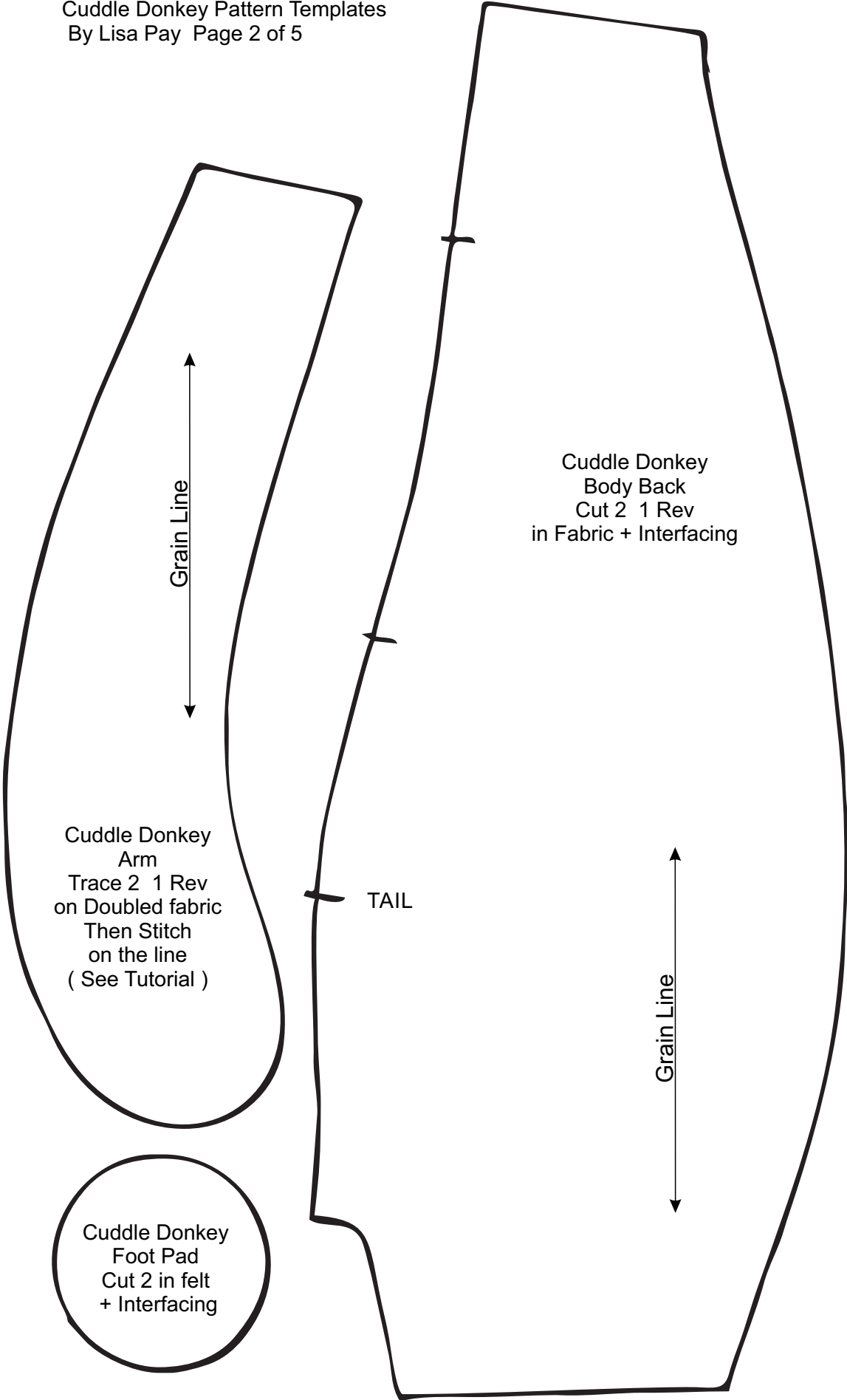


A 4mm Seam Allowance is
included in this Pattern



Donkey Cuddle Doll

Approx 37cm



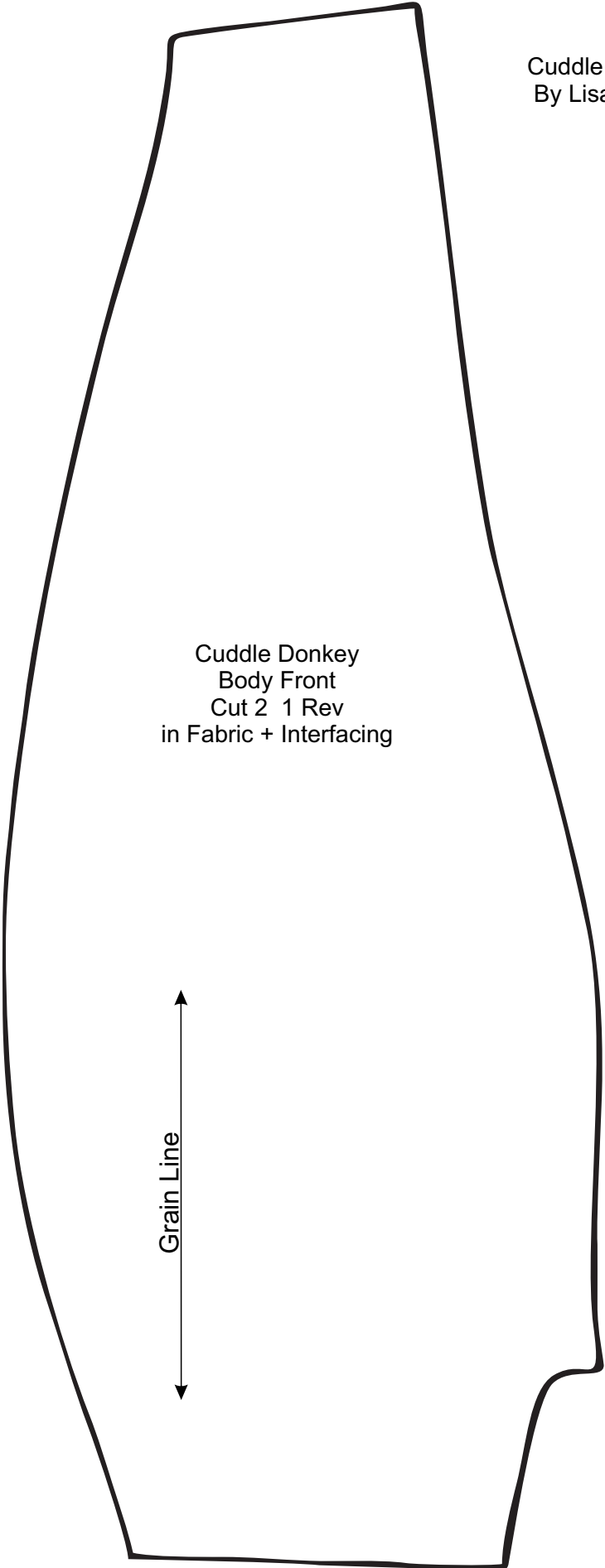
Cuddle Donkey
Arm
Trace 2 1 Rev
on Doubled fabric
Then Stitch
on the line
(See Tutorial)

Cuddle Donkey
Foot Pad
Cut 2 in felt
+ Interfacing

Cuddle Donkey
Body Back
Cut 2 1 Rev
in Fabric + Interfacing

TAIL

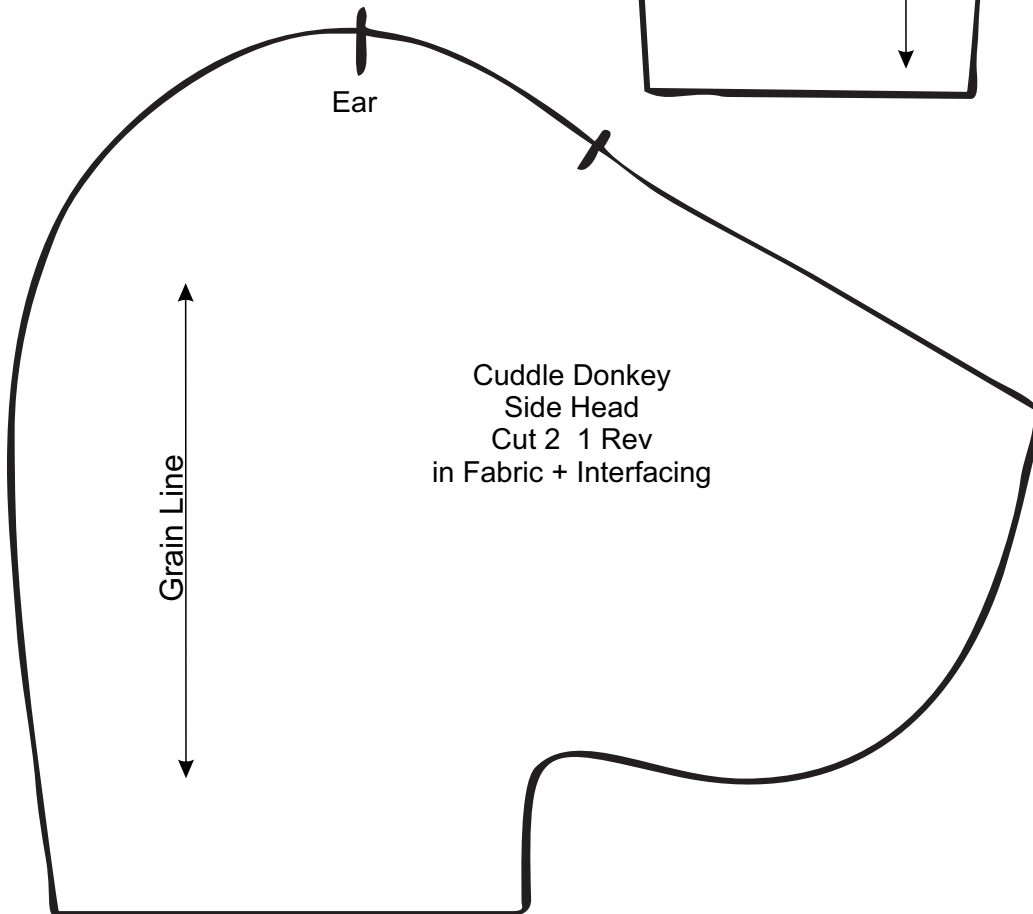
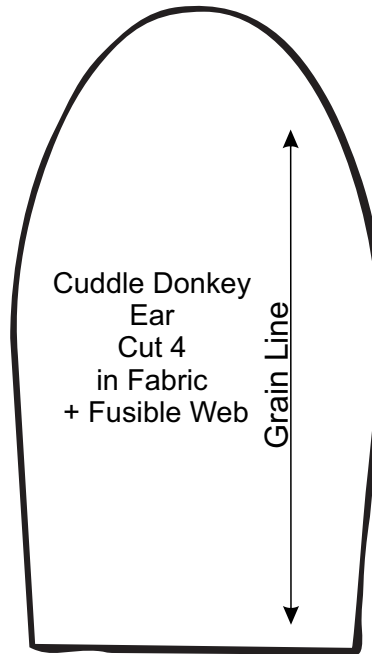
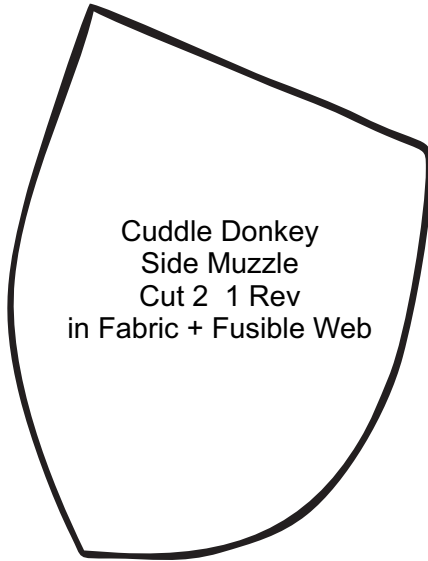
PRINT TEST - THIS LINE SHOULD MEASURE 4 INCHES OR 101.6MM



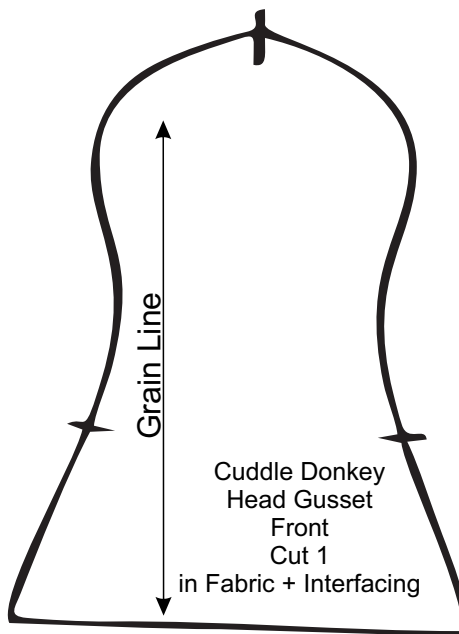
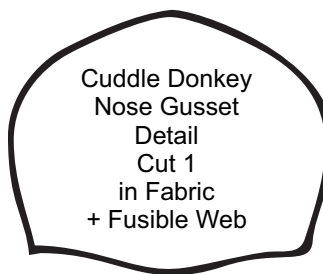
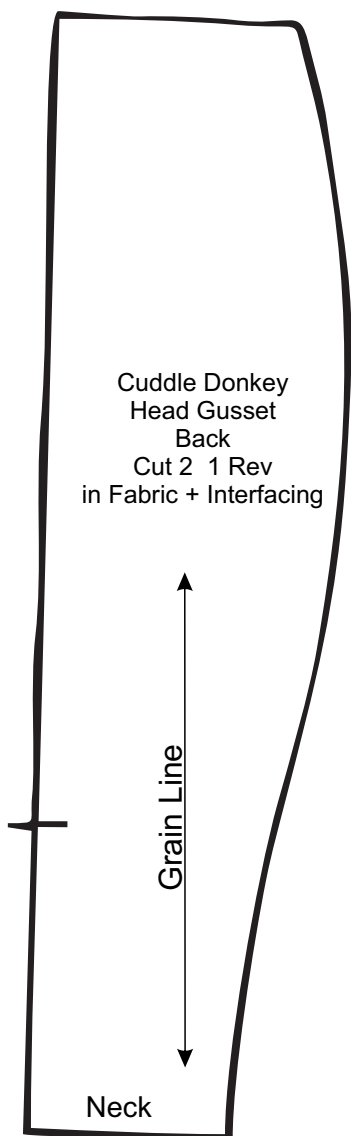
Cuddle Donkey
Body Front
Cut 2 1 Rev
in Fabric + Interfacing

Grain Line

PRINT TEST - THIS LINE SHOULD MEASURE 4 INCHES OR 101.6MM



PRINT TEST - THIS LINE SHOULD MEASURE 4 INCHES OR 101.6MM



PRINT TEST - THIS LINE SHOULD MEASURE 4 INCHES OR 101.6MM