

Knitted lace shawl Novita Baby Merino

The small lace shawl is worked starting from the neck. Knitted from Novita Baby Merino.

Novita Syksy 2018 -lehti (in Finnish)

26

Expert

Availability: In stock

N031826



[Create project](#)

Like

Pattern details

Size

One size

Yarn demand

Novita Baby Merino
(326) Silver Willow 150 g

Needles and other supplies

Needles:

Novita 4 mm (UK 8 / US 6) or
size needed to obtain gauge;
a small extra needle

Designer

Sisko Sälpäkivi

Pattern instructions

Finished dimensions

Top edge approx. 136 cm / 53 ½ in; height in the middle approx. 63 cm / 24 ¾ in

Stitch patterns & gauge

Stitch patterns:

- Lace pattern:

follow the charts and the written instructions.

- Garter stitch:

knit all rows.

Gauge:

23 sts on the lace pattern = 10 cm / 4 in

Note:

The shawl is knitted starting from the neck, in the middle of the long edge. On each RS row increases are worked at both ends and in the middle, with 4 sts increased each time.

Cast on 3 sts and purl 1 WS row. Then begin the lace pattern from **row 1** of chart I: (RS) k1, yo, knit the middle st (marked in blue on the chart), work the left side as the mirror image of the right side (= yo, k1) = 5 sts.

Row 2: k1, p3, k1 = 5 sts.

Row 3: k1, yo, k1, yo, knit the middle st and work the left side as the mirror image of the right side (= yo, k1, yo, k1) = 9 sts.

Row 4: k1, p7, k1 = 9 sts.

Continue in the same manner and work rows 5–94. Work the left side after the middle st as the mirror image of the right side. 4 sts increased on each RS row (1 st at both ends and 1 st on both sides of the middle st). The 8-row stripe pattern is repeated 10 times in total, 185 sts now on the needles (92 sts + 1 st + 92 sts).

Continue in the same manner. The lace pattern on the edge is repeated as on rows 13–54.

When the 8-row stripe pattern has been repeated 15 times in total, there are 265 sts on the needles (132 sts + 1 st + 132 sts).

Continue working the lace pattern from row 1 of chart II: work 4 sts from the right end of the chart (= 3 sts + 1 st), work the 20 st pattern repeat 6 times, work 10 sts at the left end (= 9 sts + 1 st), work the middle st, and work the left side as the mirror image of the right side. Work rows 2–48 of chart II, and then work 2 rows in garter st. Bind off.

Finishing

Wet-block the shawl to measurements and allow to dry, or steam it lightly.









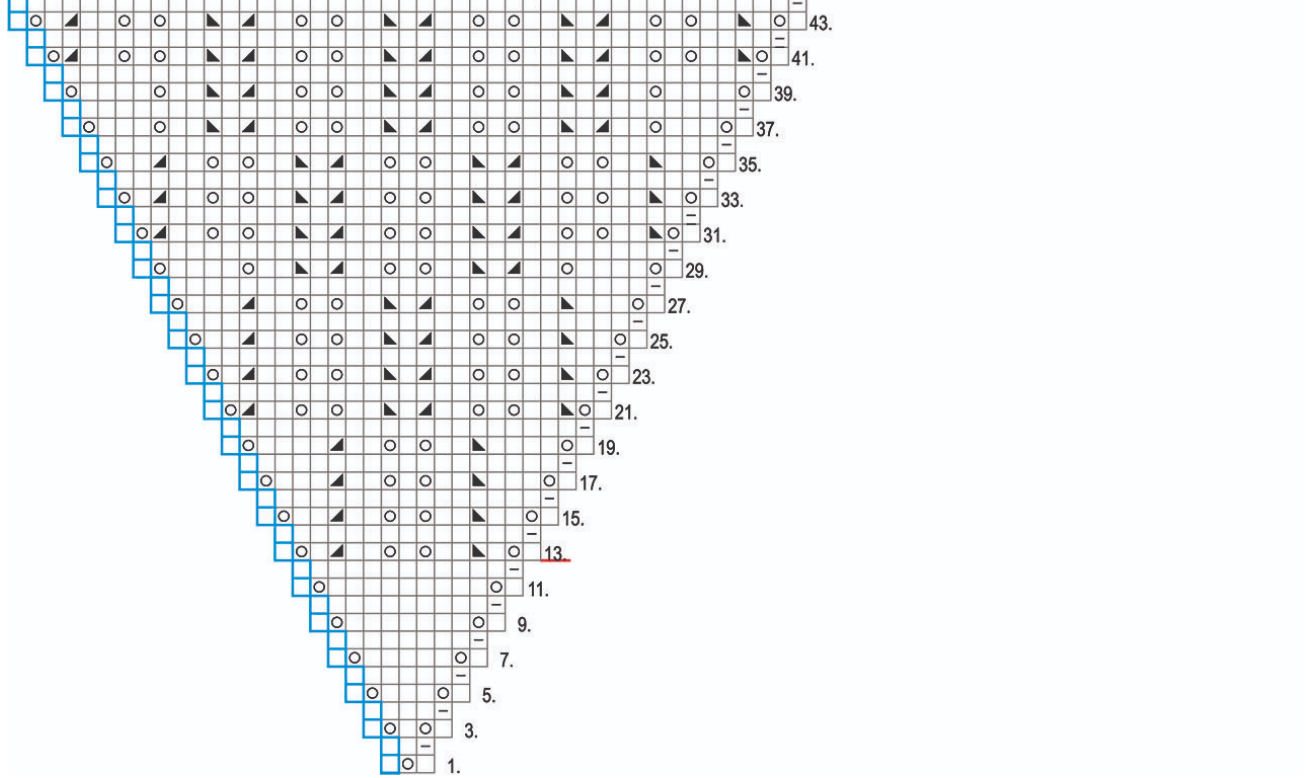
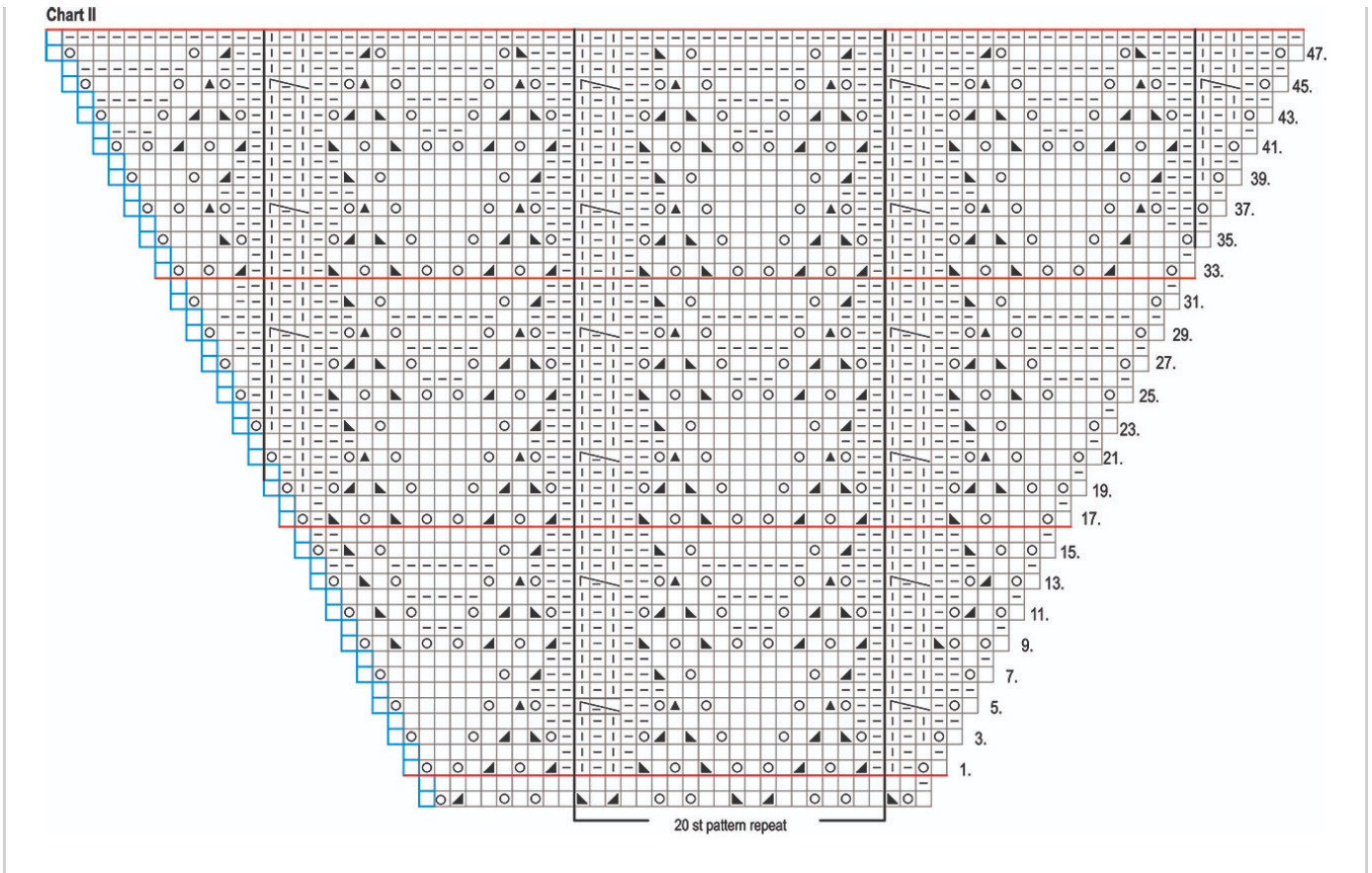
-  = knit stitch, purl on the WS rows
-  = purl stitch, knit on the WS rows
-  = slip 1 st knitwise, k1, pass the slipped st over
-  = knit 2 sts together
-  = yarn over
-  = slip 2 together knitwise, k1, pass the slipped sts over
-  = knit through the back loop
-  = Slip 1 st onto cable needle and hold in front. Knit the 2nd st on the left-hand needle, purl the 1st st on the left-hand needle and drop both sts off the needle. Knit 1 st from the cable needle through the back loop

Chart I





Skill levels

Gauge & Swatching

Reviews