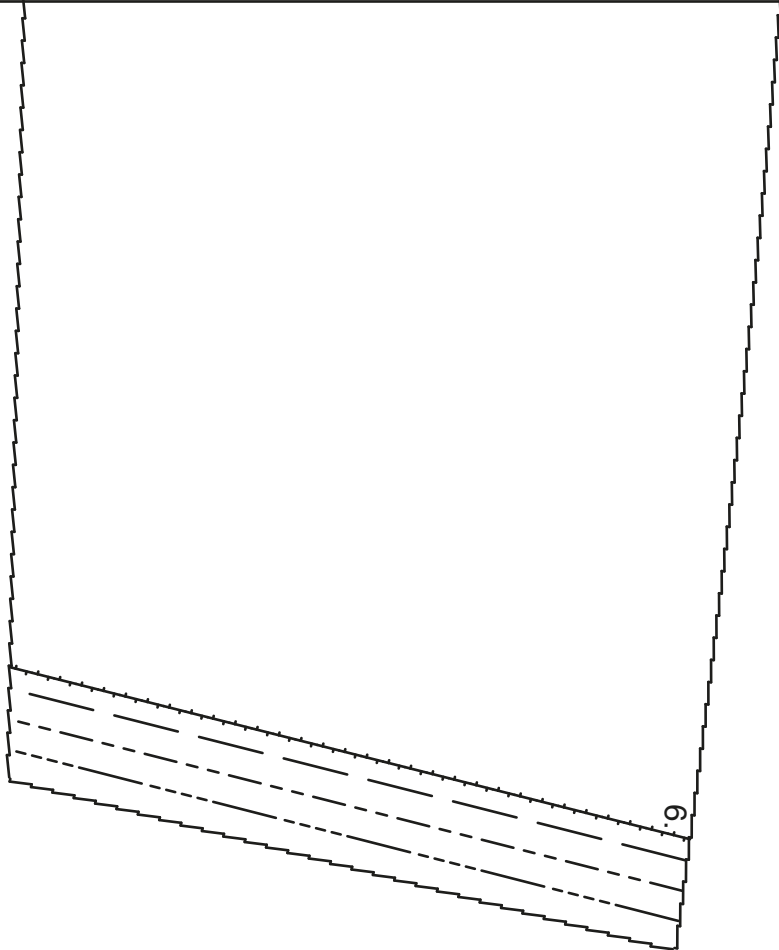


2a



25

rückwärtige Mitte Stoffbruch Fadenlauf
center back fold straight grain
ЗАДНЯЯ СЕРЕДИНА СГИБ ТКАНИ НАПРАВЛЕНИЕ НИТИ

1a

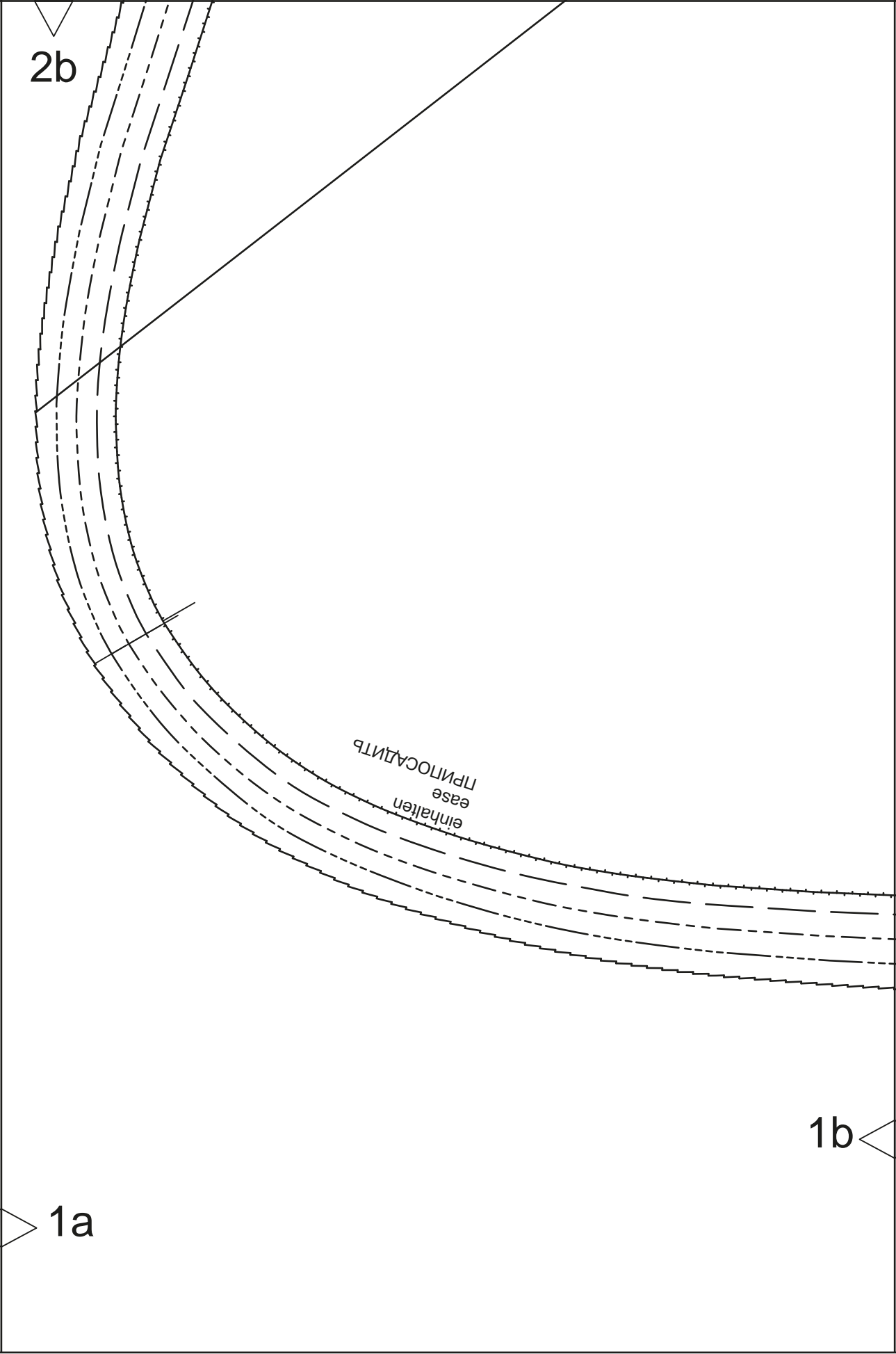


2b

einhalten
ease
ЛПНТОСАДНТЪ

1a

1b

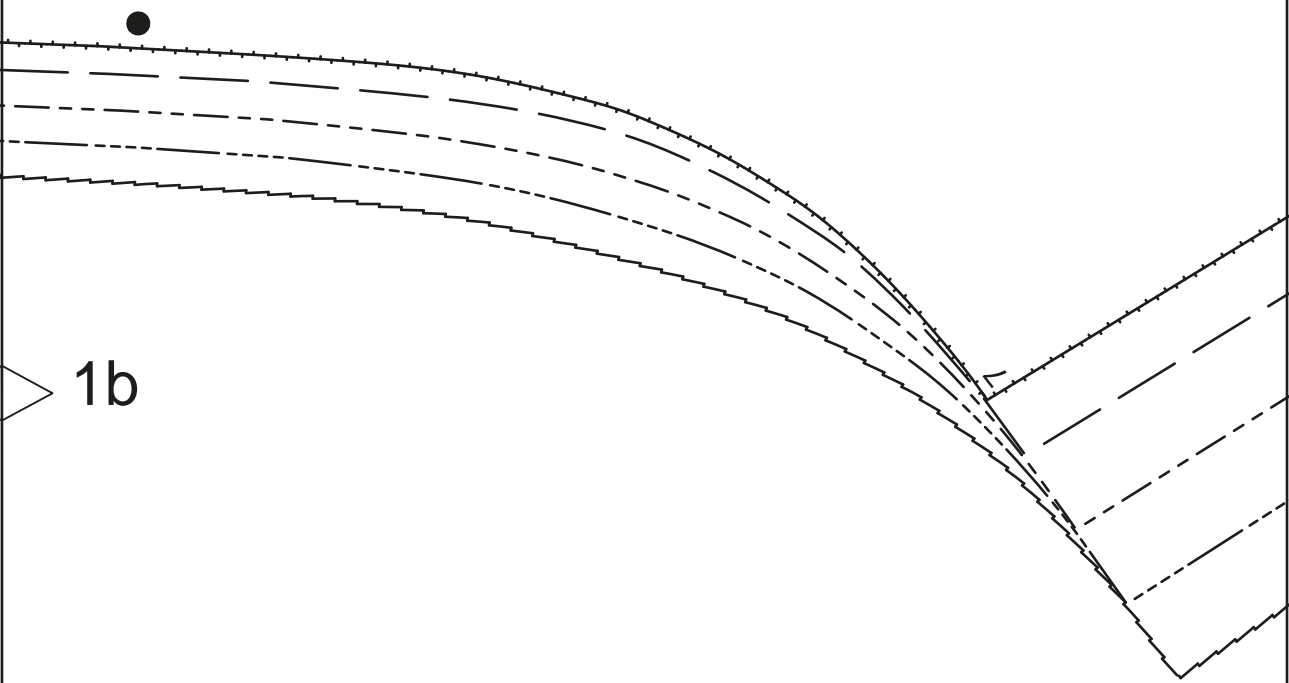


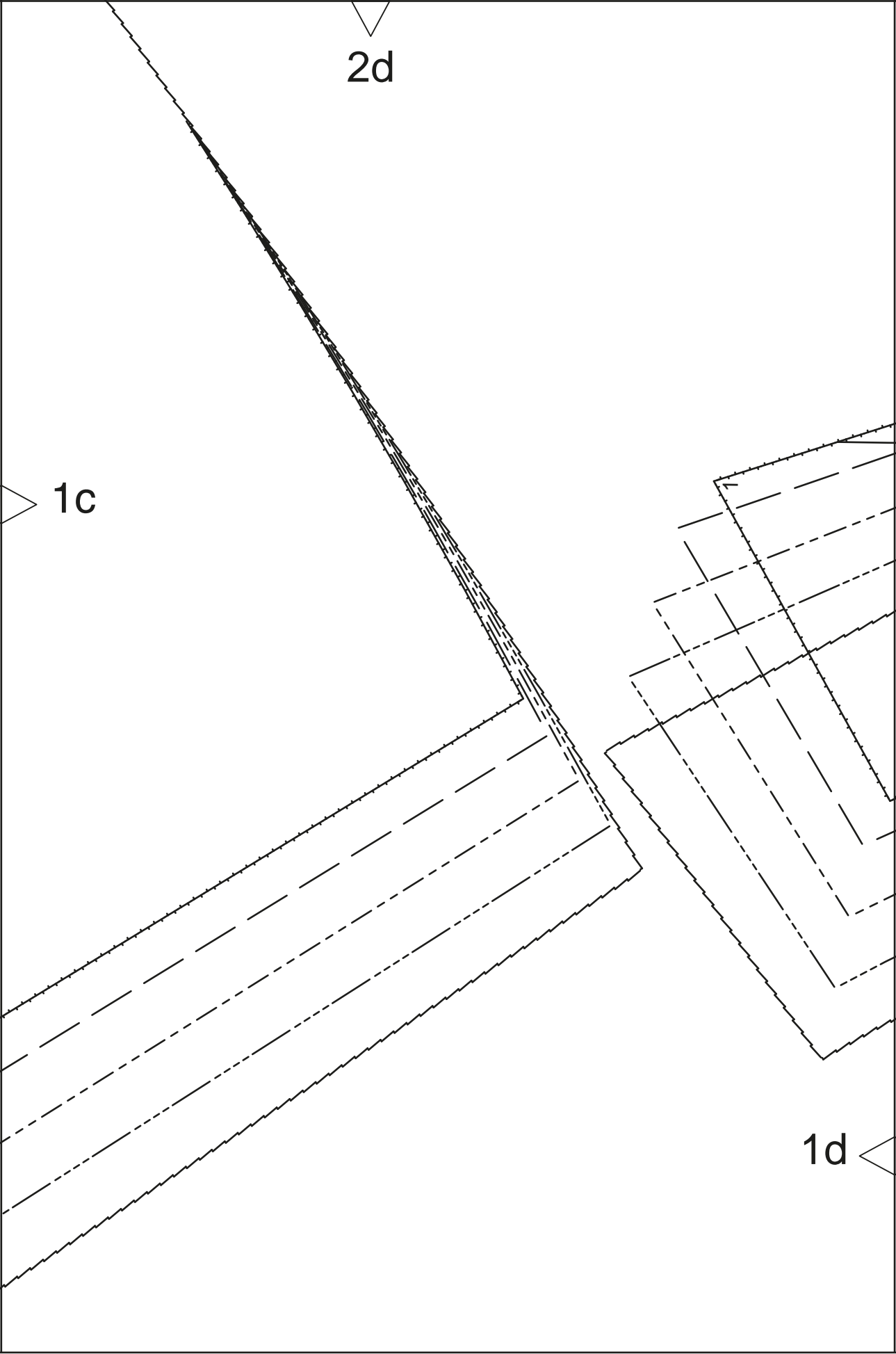
26

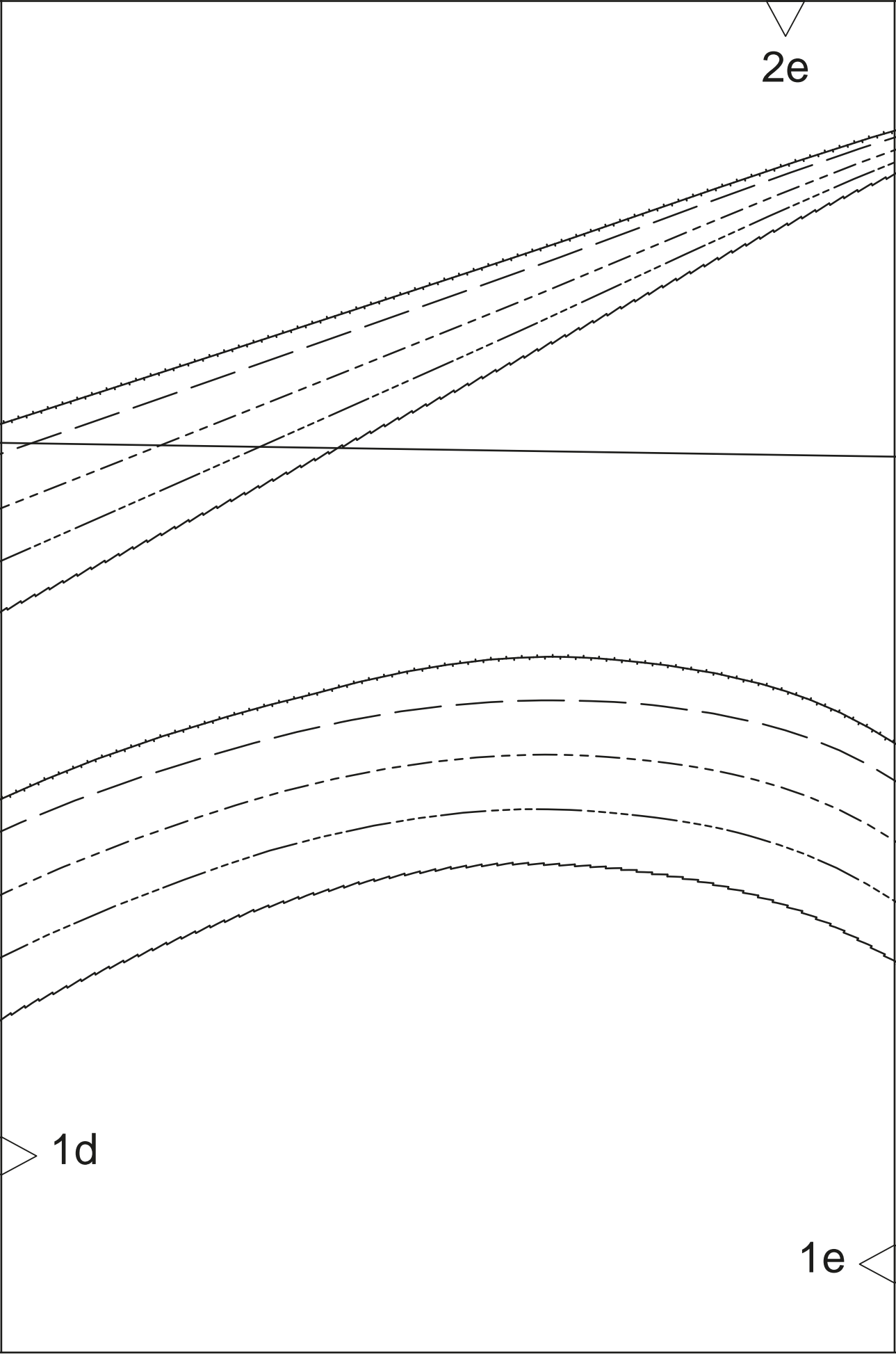
2c

1c

1b





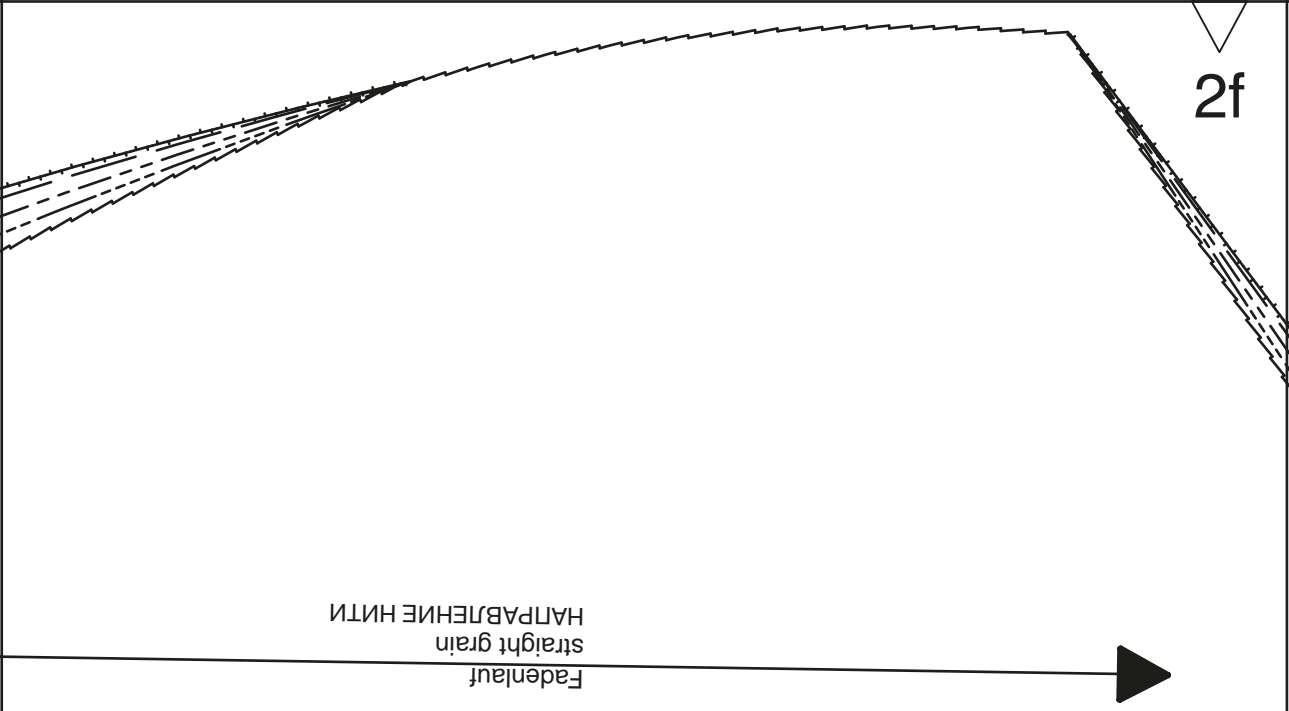


2e

1d

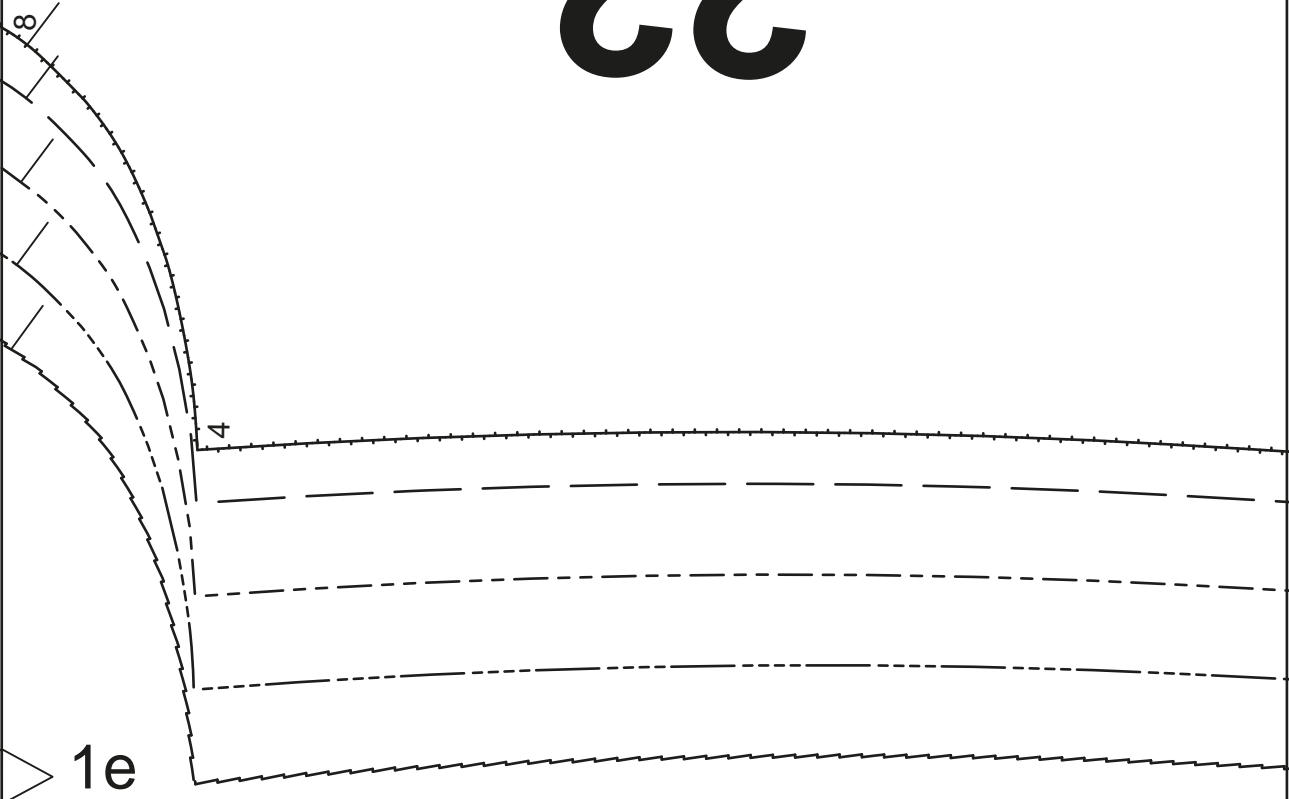
1e

2f



22

1f



1e

4

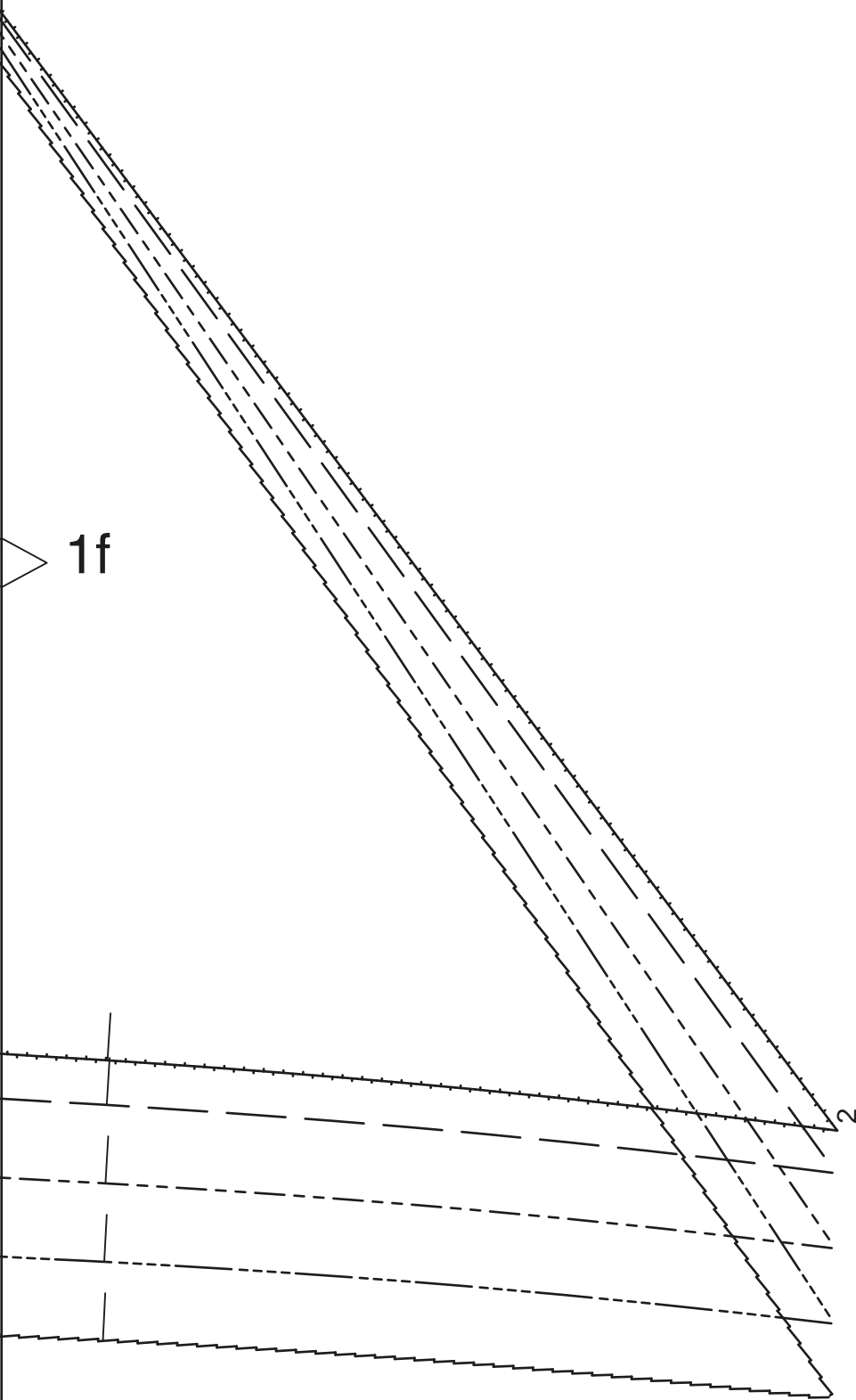
8

2g

1f

1g

2



2h

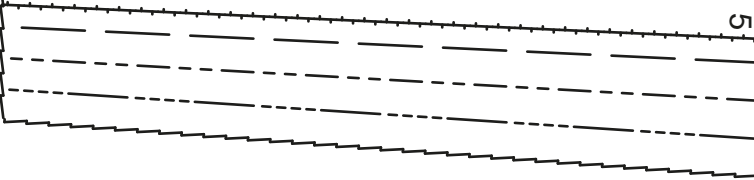


Fadenlauf
straight grain
НАПРАВЛЕНИЕ НИТИ

1g

9

5



4a

28

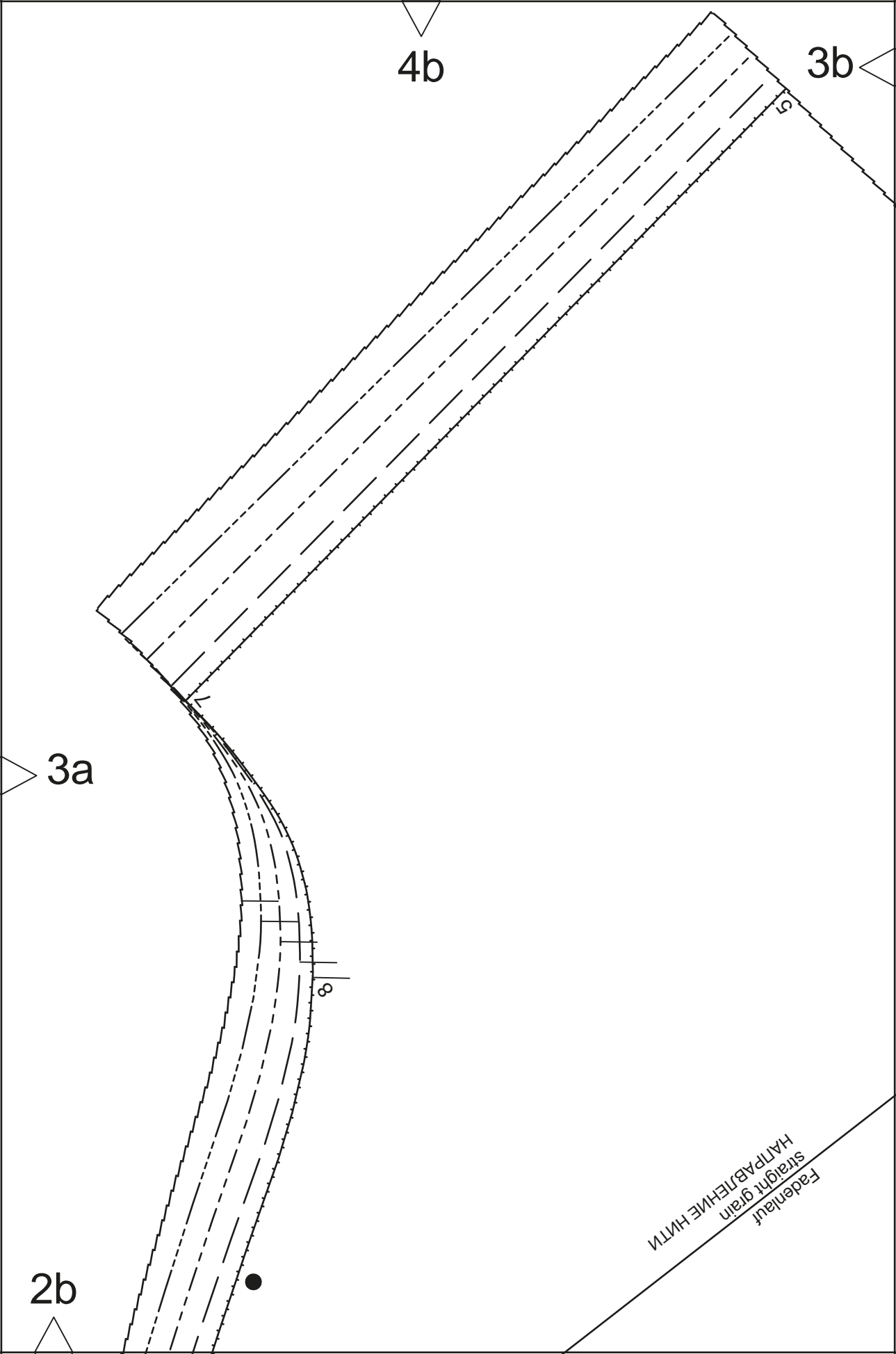
einreihen
gather
ПРИСБОРИТЬ

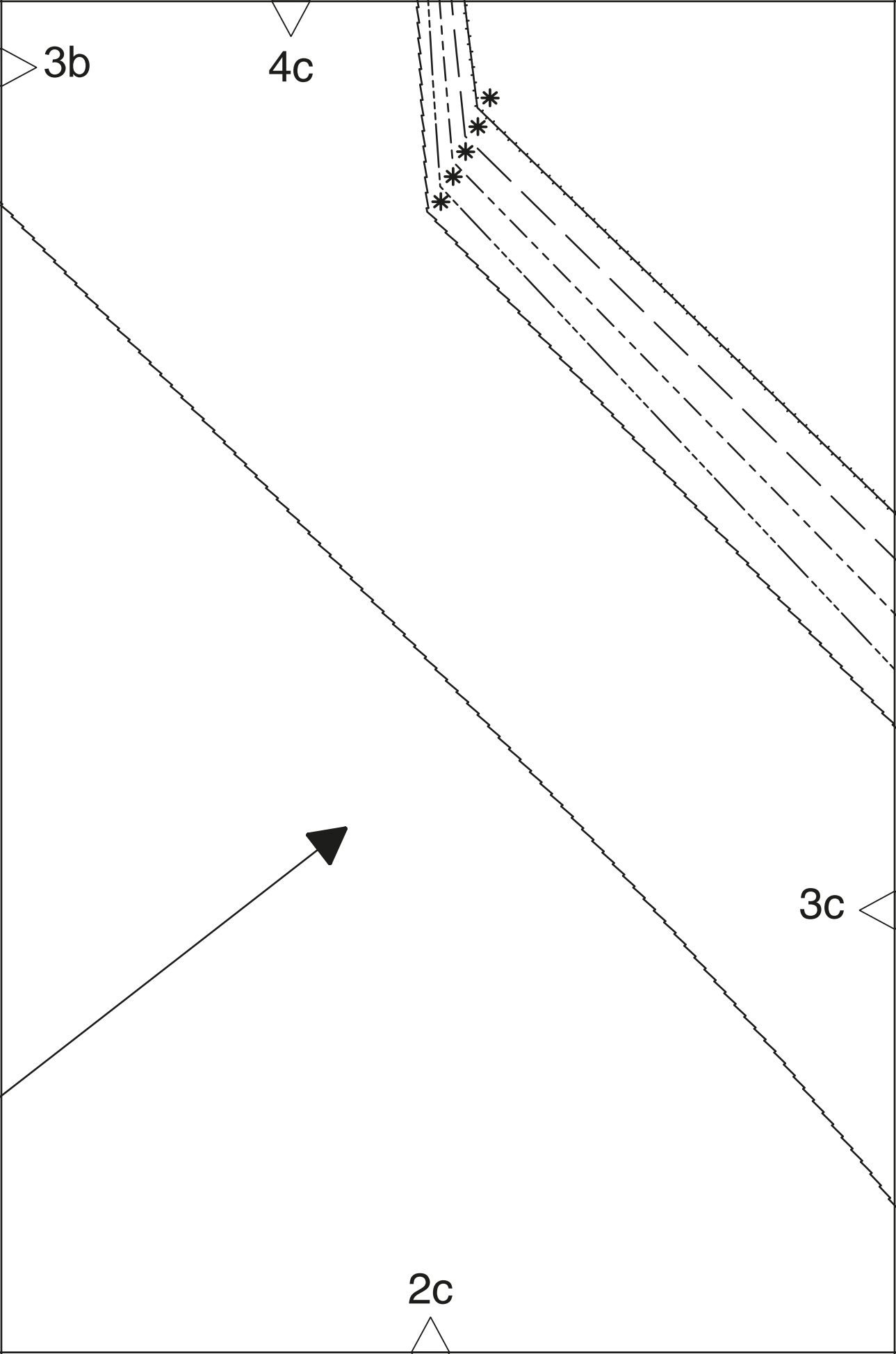
3a



Fadenlauf
straight grain
НАПРАВЛЕНИЕ НИТИ

2a



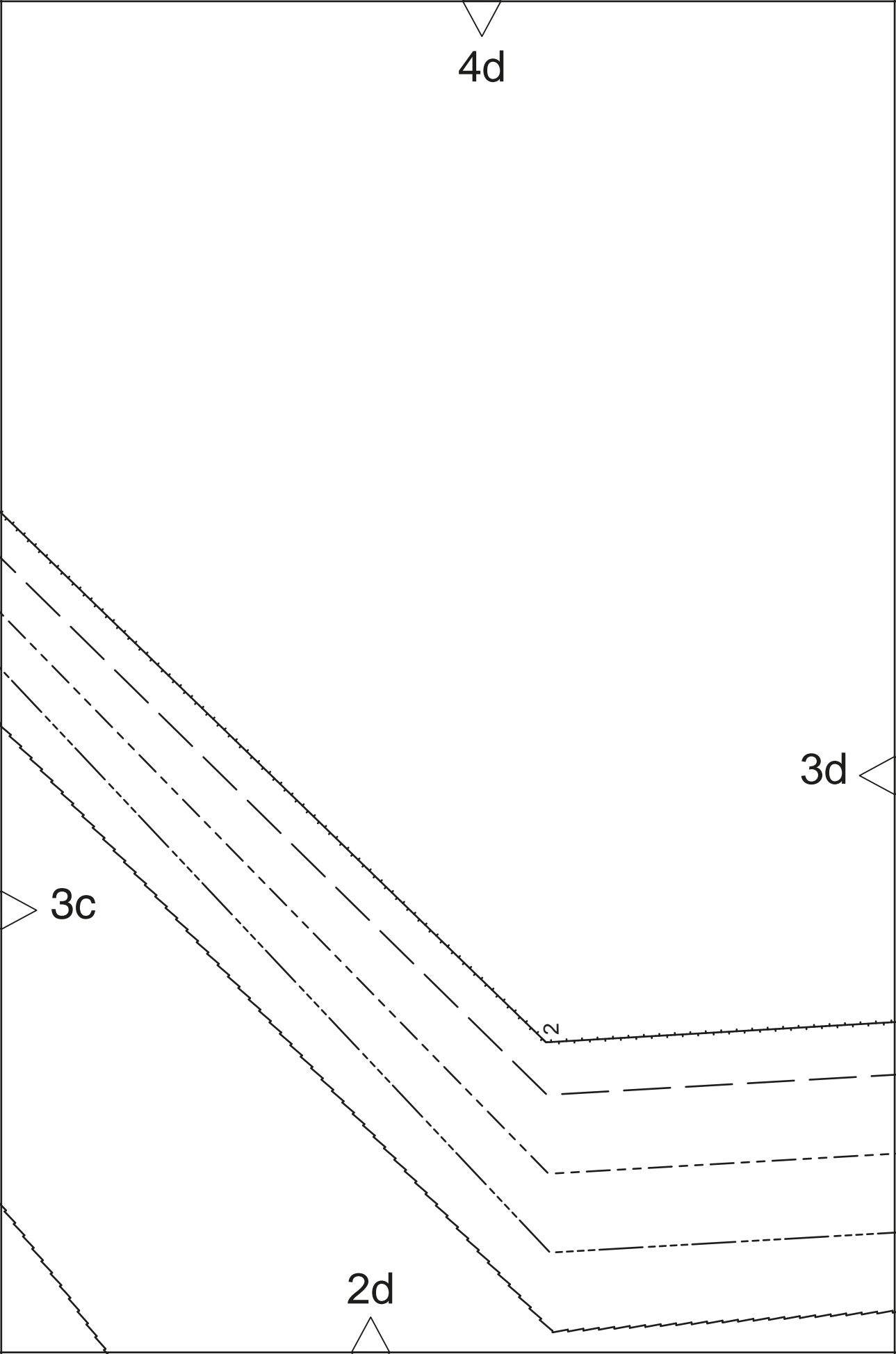


3b

4c

3c

2c



4d

3d

3c

2d

2

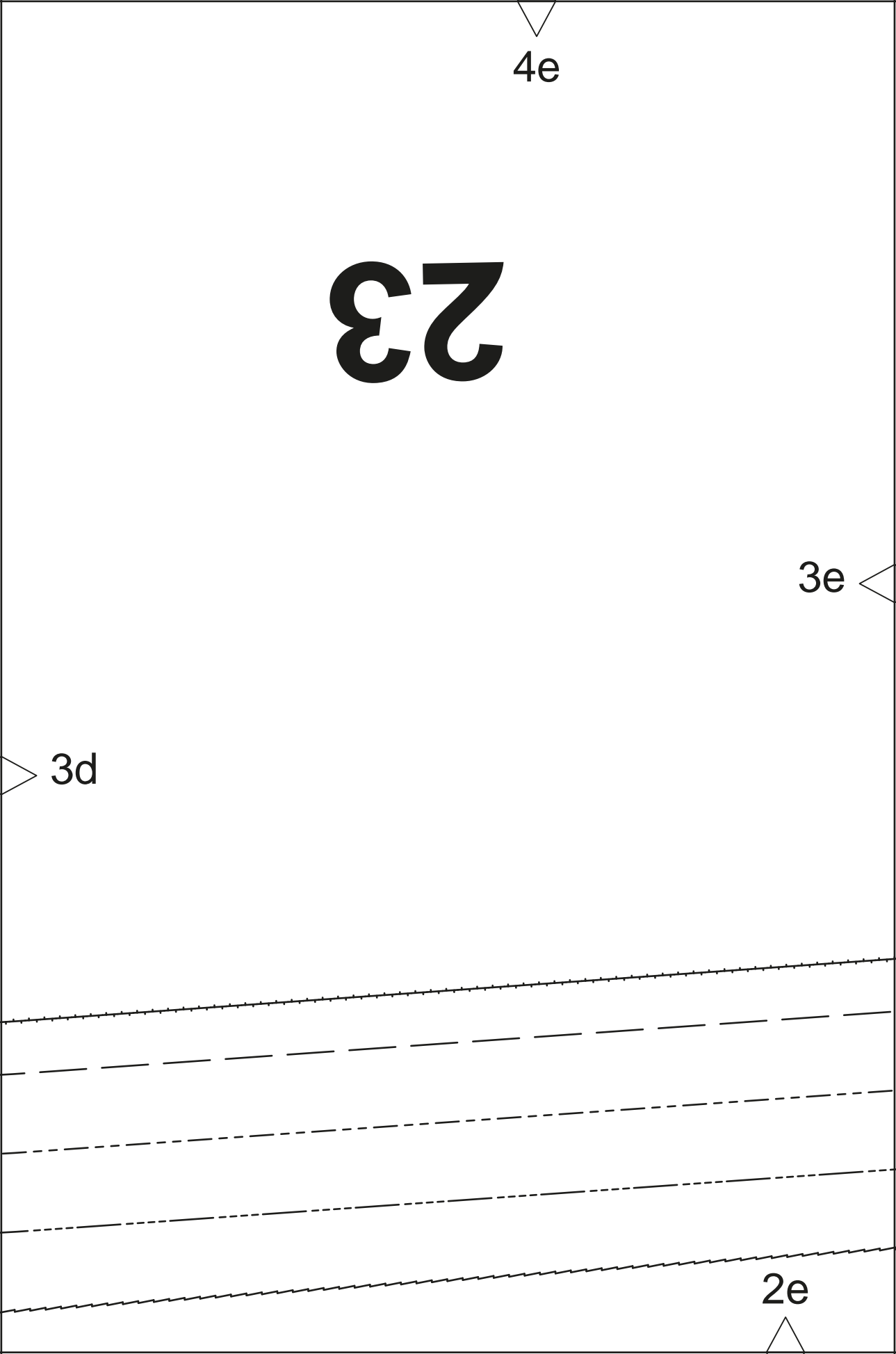
4e

23

3e

3d

2e



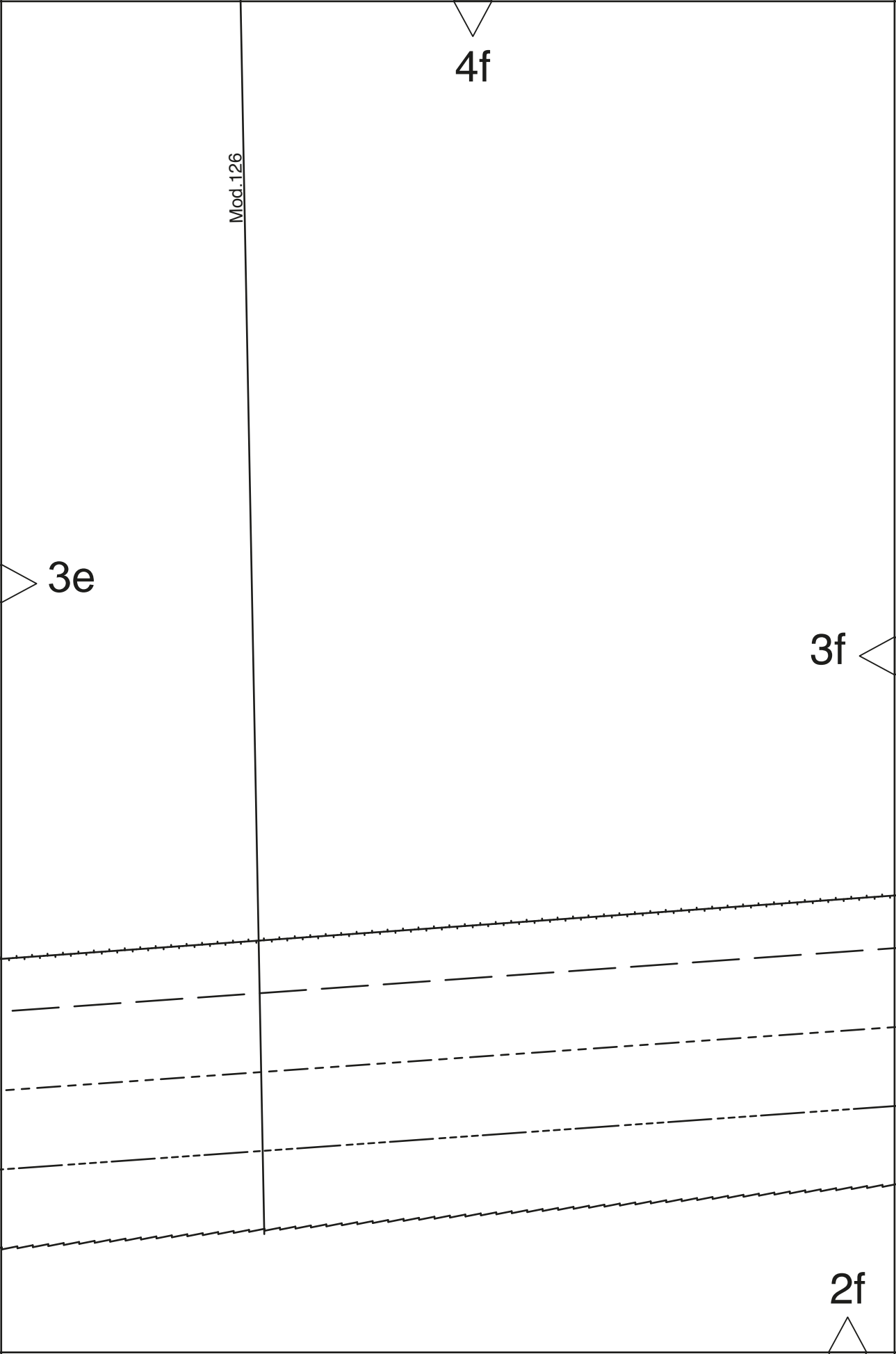
4f

Mod.126

3e

3f

2f



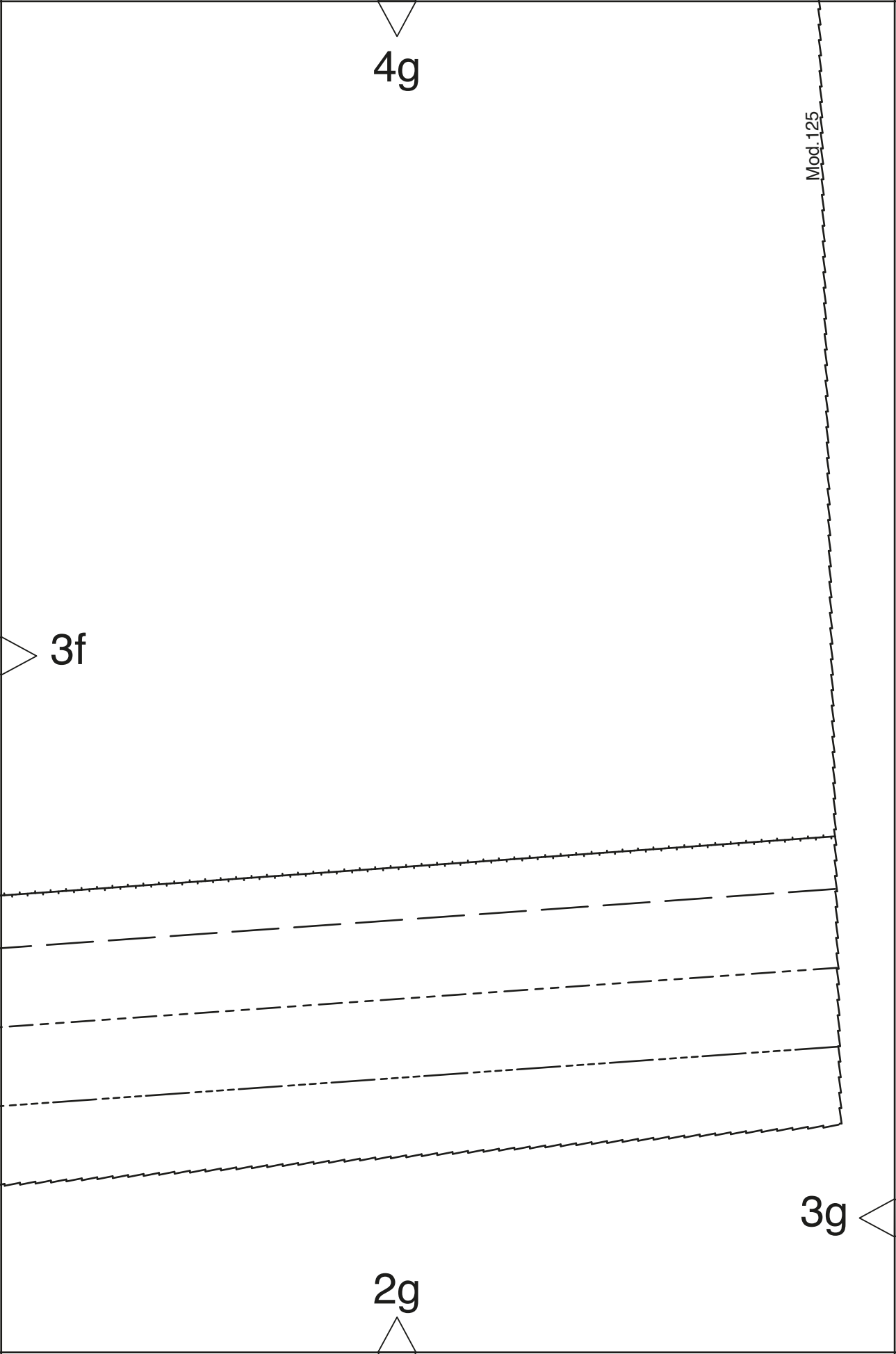
4g

Mod. 125

3f

3g

2g



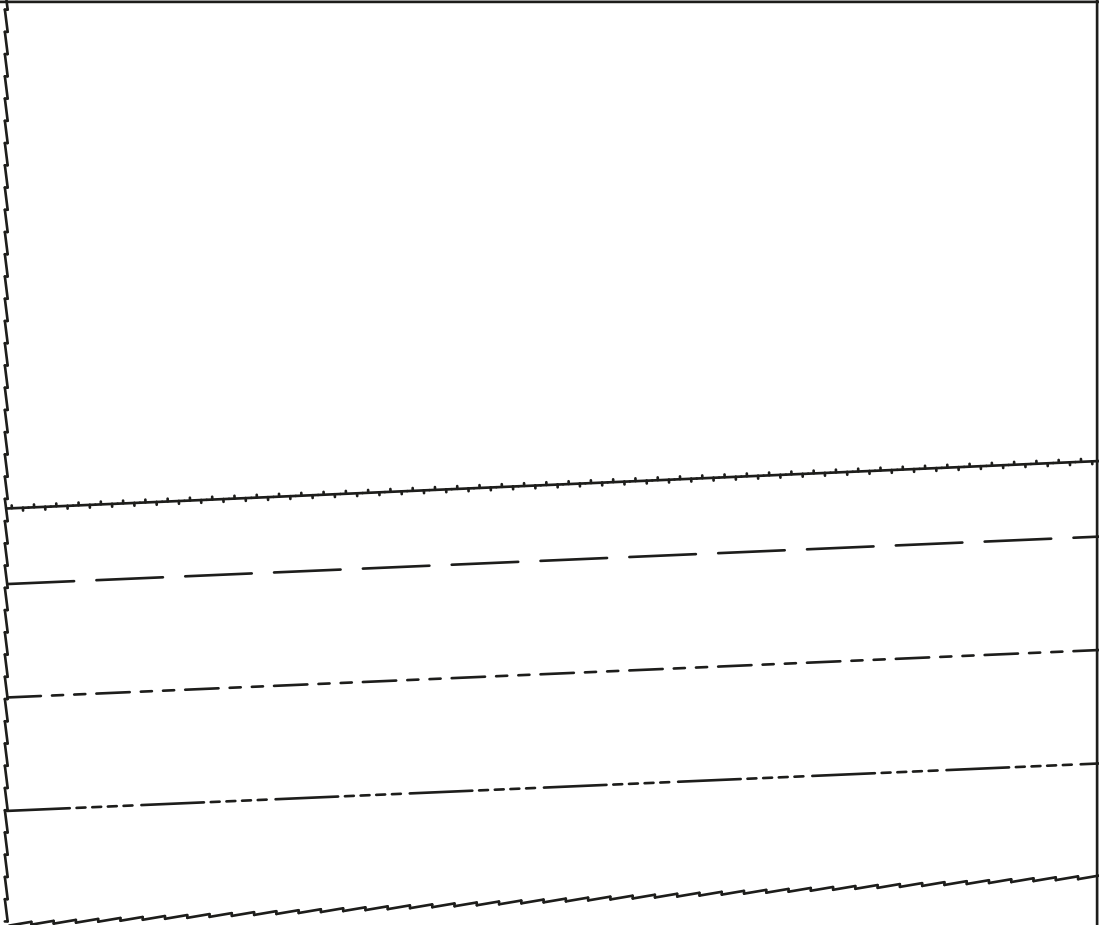
4h

27

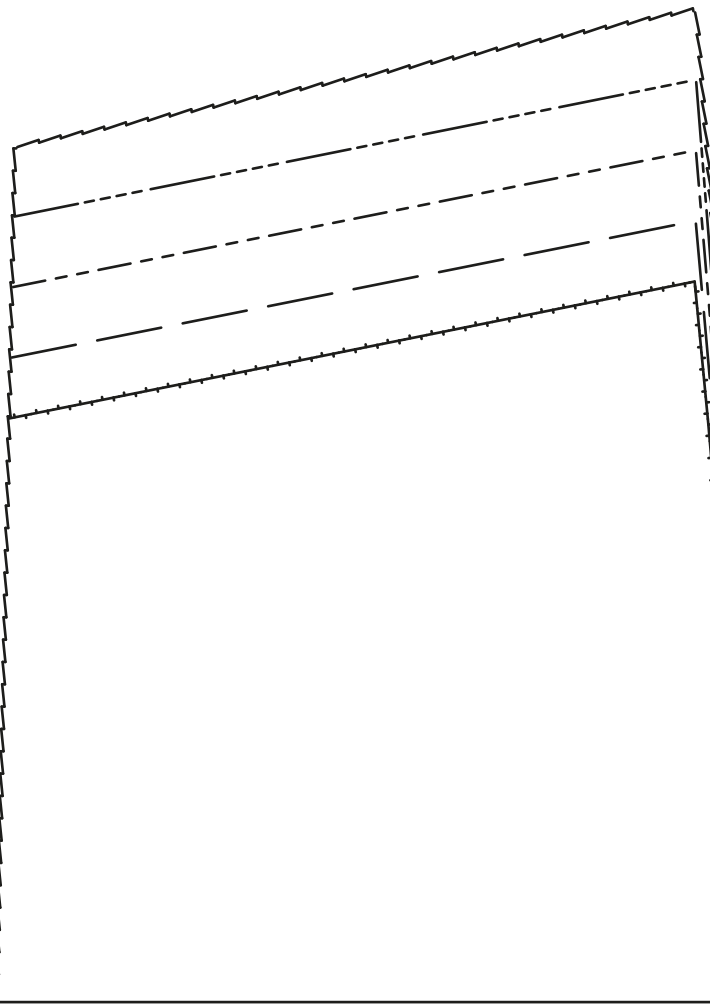
3g

2h

6a



5a



4a



6b

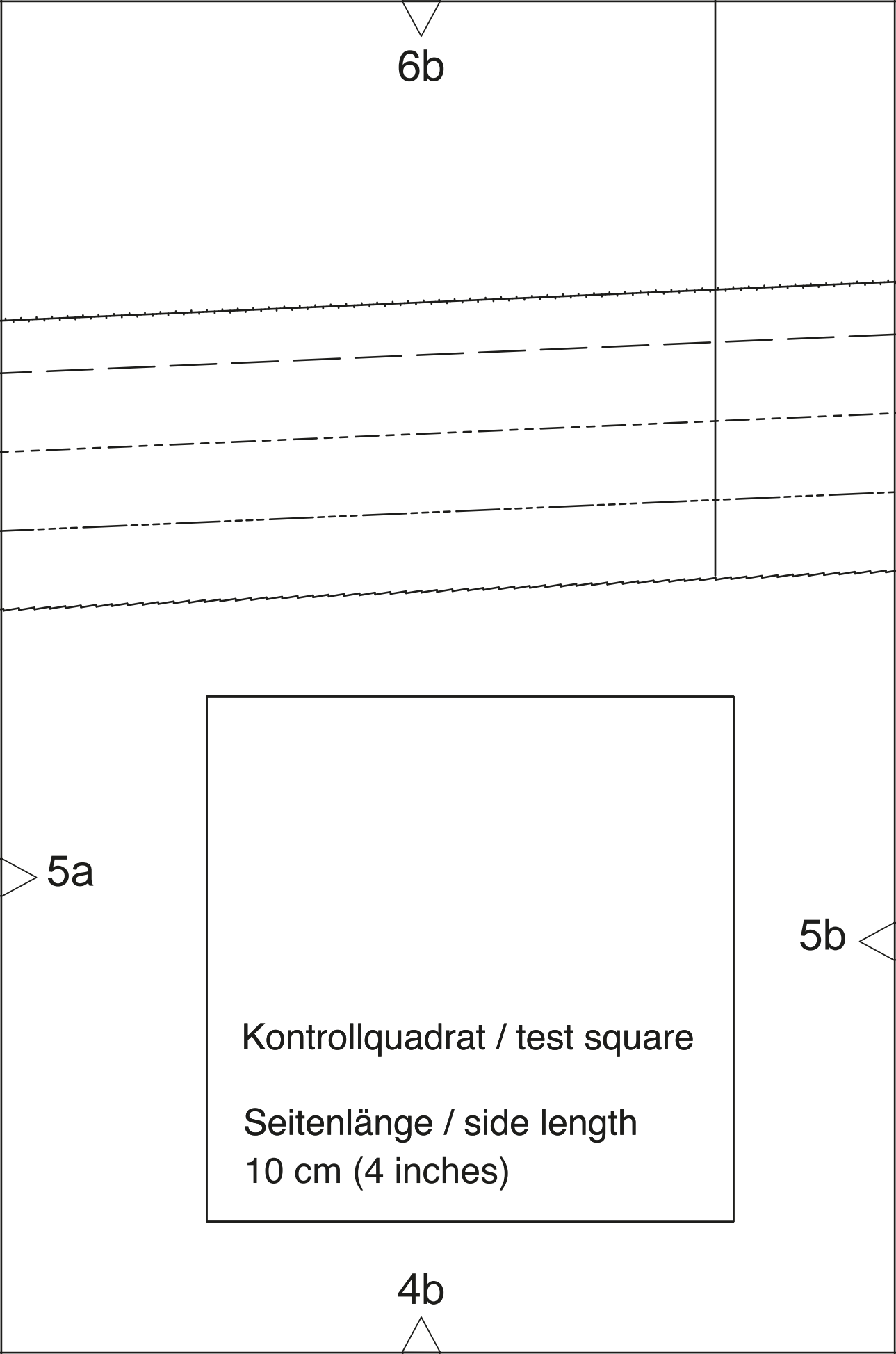
5a

5b

Kontrollquadrat / test square

Seitenlänge / side length
10 cm (4 inches)

4b



6c

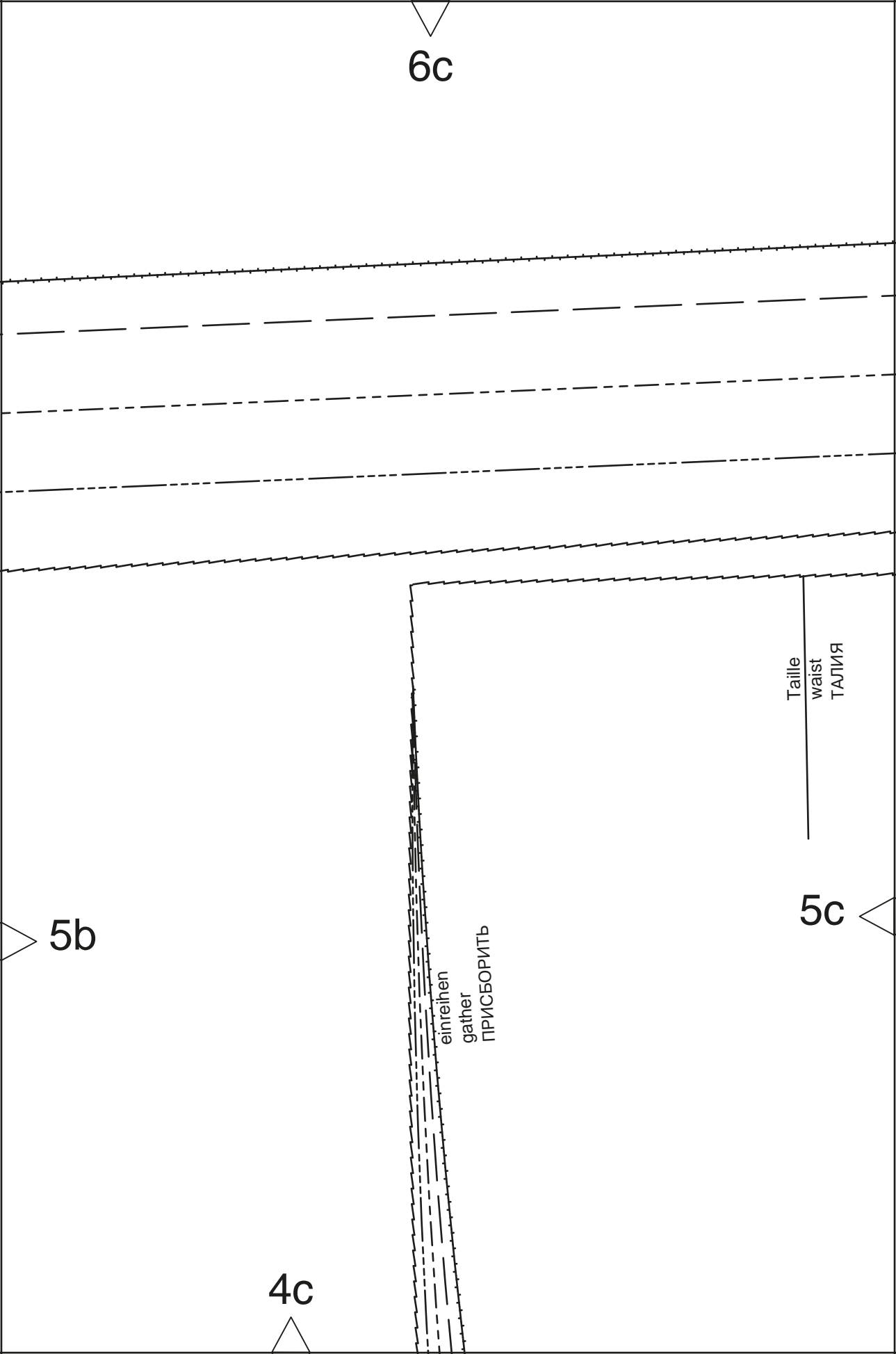
Taille
waist
ТАЛИЯ

5c

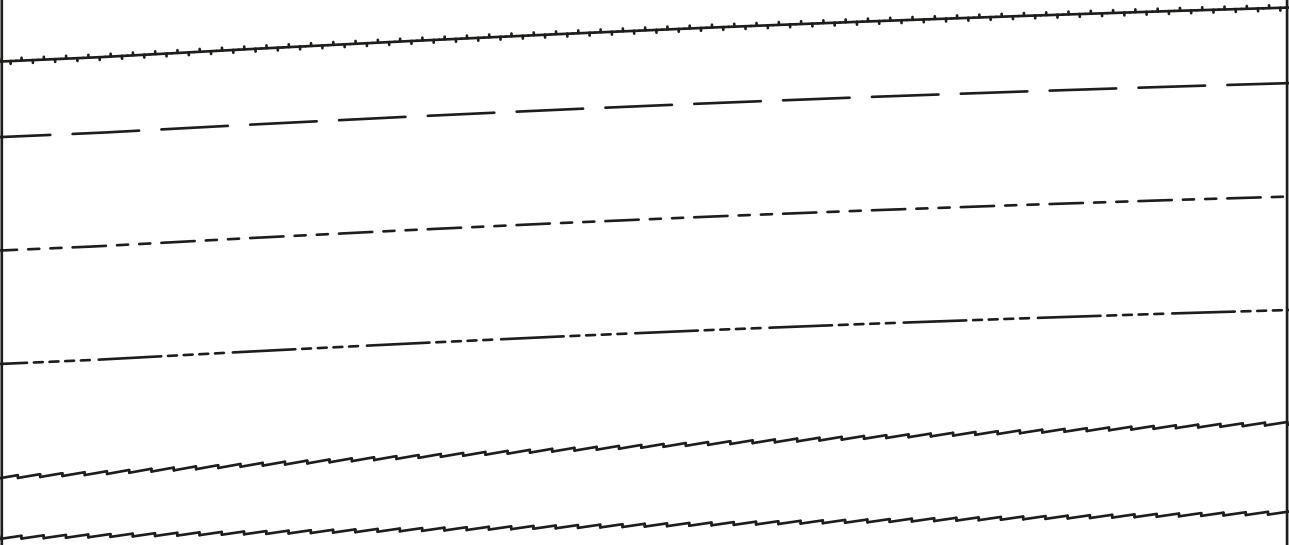
5b

einreihen
gather
ПРИСБОРИТЬ

4c



6d

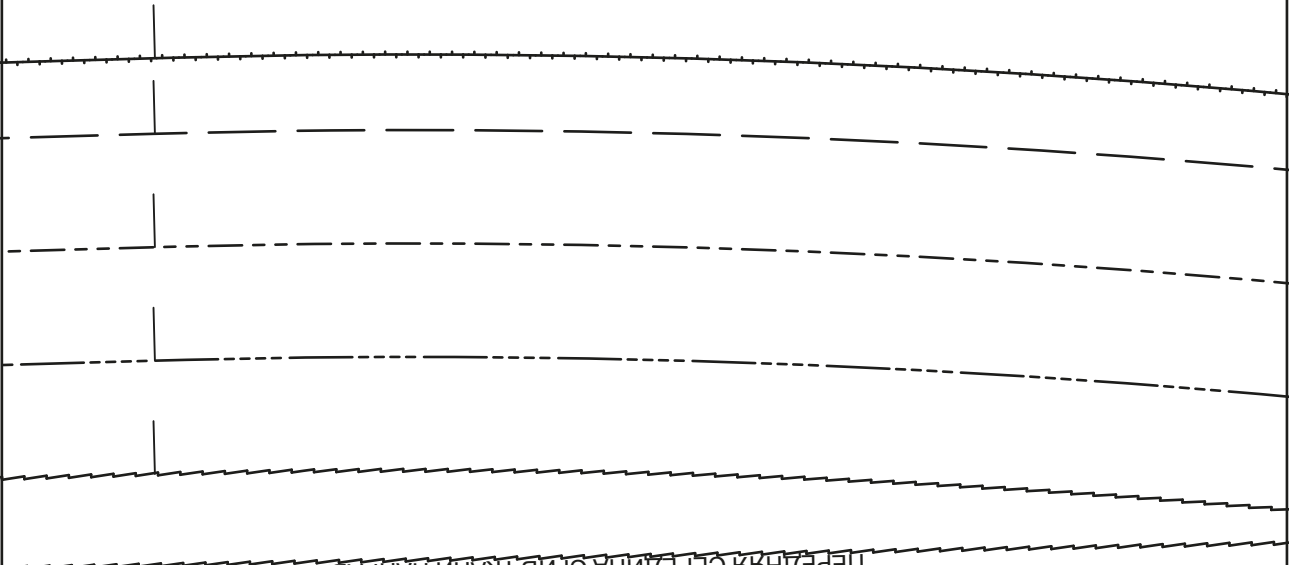


5c

5d

4d

6e

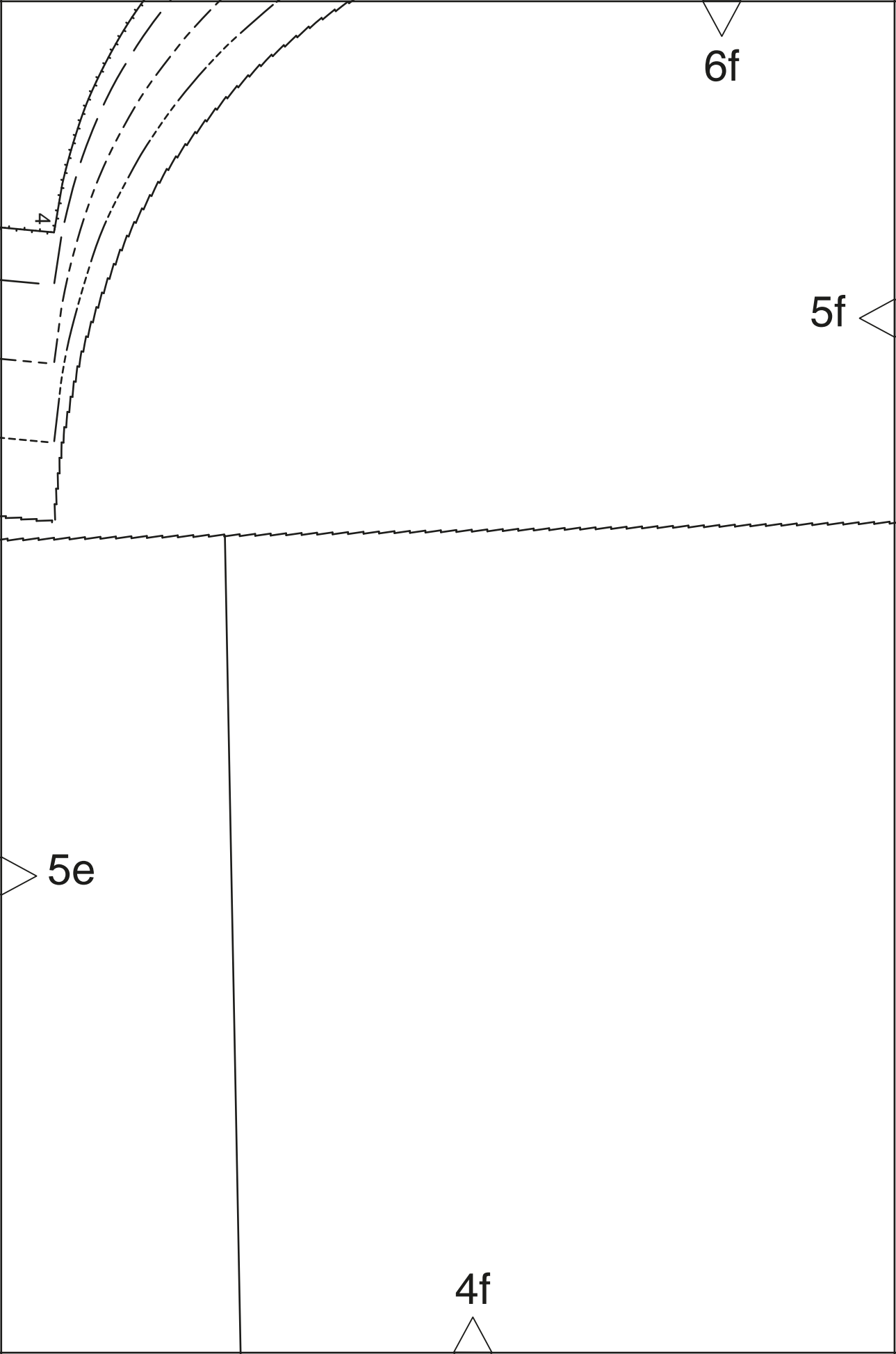


передняя середина сгиба ткани напарлевные нити
center front fold straight grain
vordere Mitte Stoffbruch Fadenlauf

5d

5e

4e

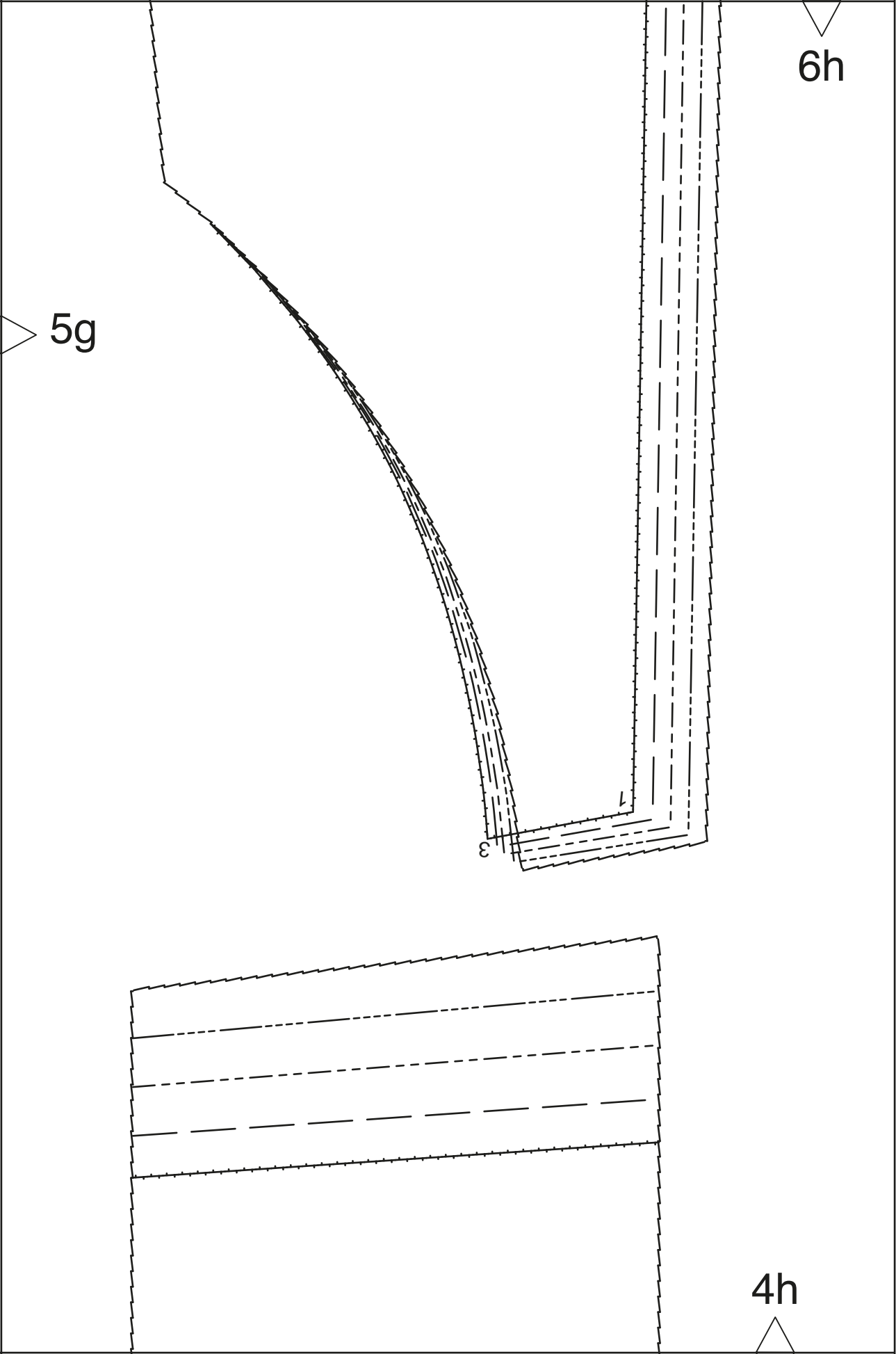


6g

5f

5g

4g



5g

6h

4h

ϵ

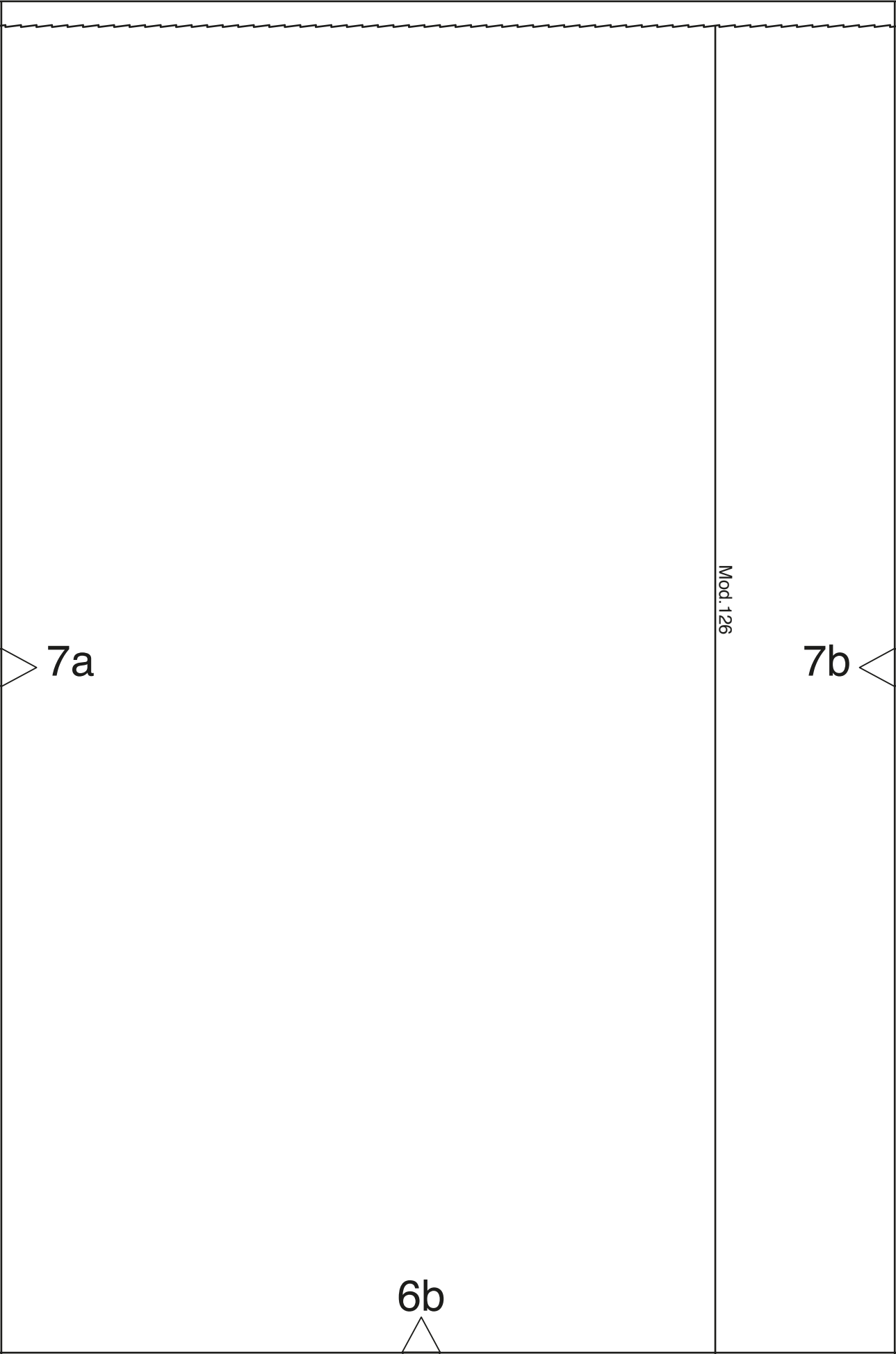
6a



Mod. 125

7a



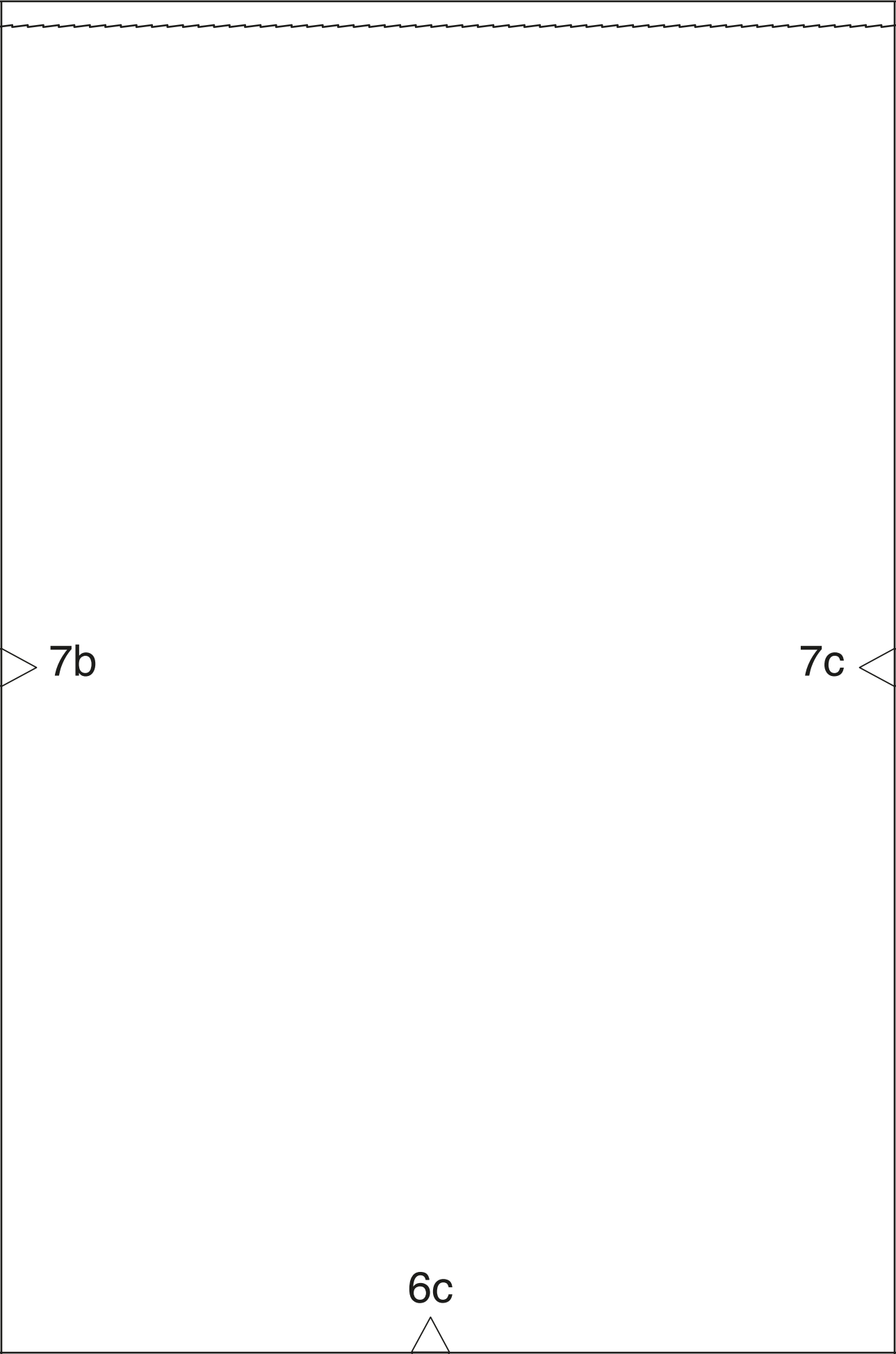


7a

7b

6b

Mod. 126



7b

7c

6c

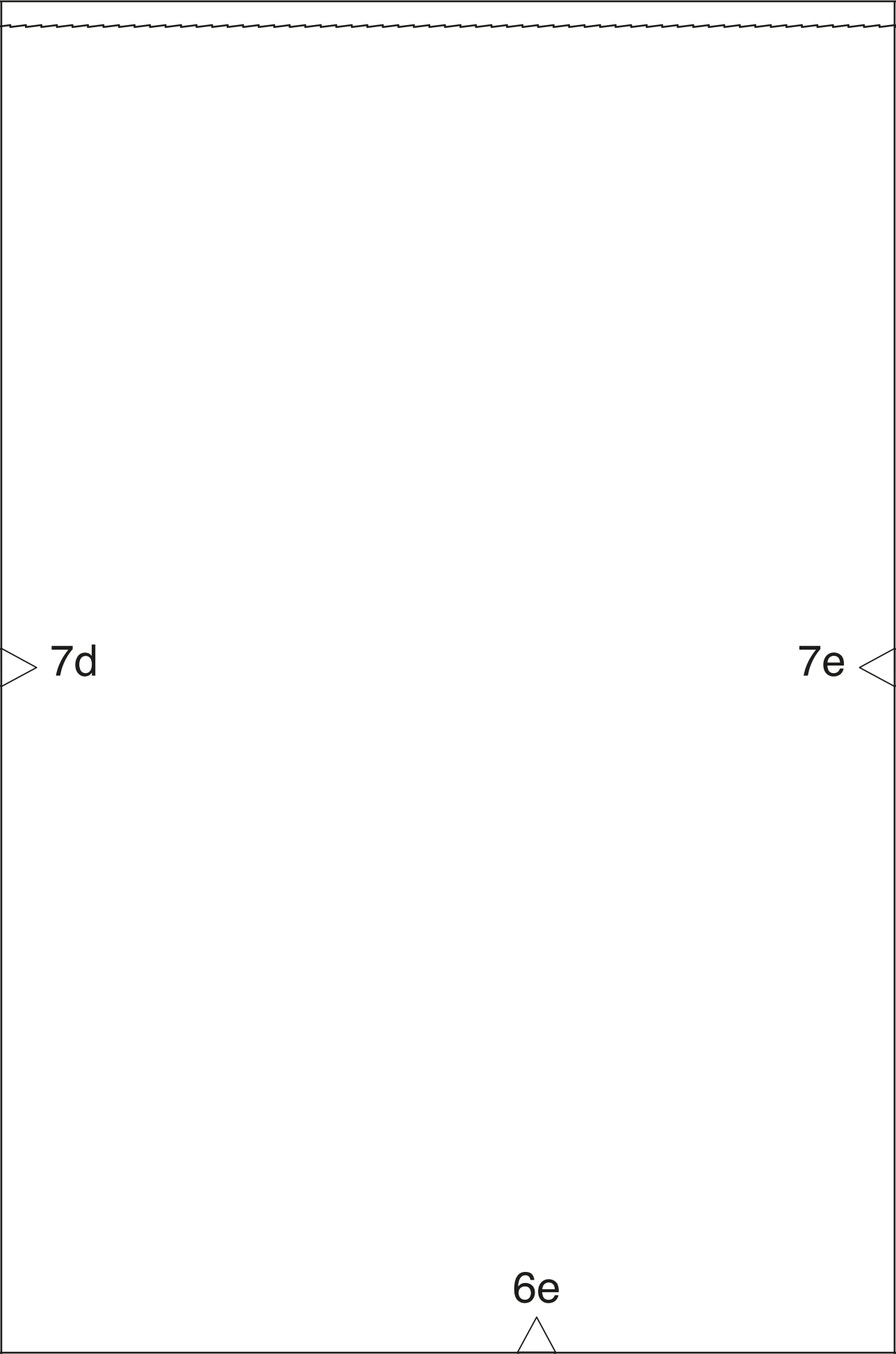
rückwärtige Mitte Stoffbruch Fadenlauf
center back fold straight grain
ЗАДНЯЯ СЕРЕДИНА СГИБ ТКАНИ НАПРАВЛЕНИЕ НИТИ

24

7c

7d

6d



7d

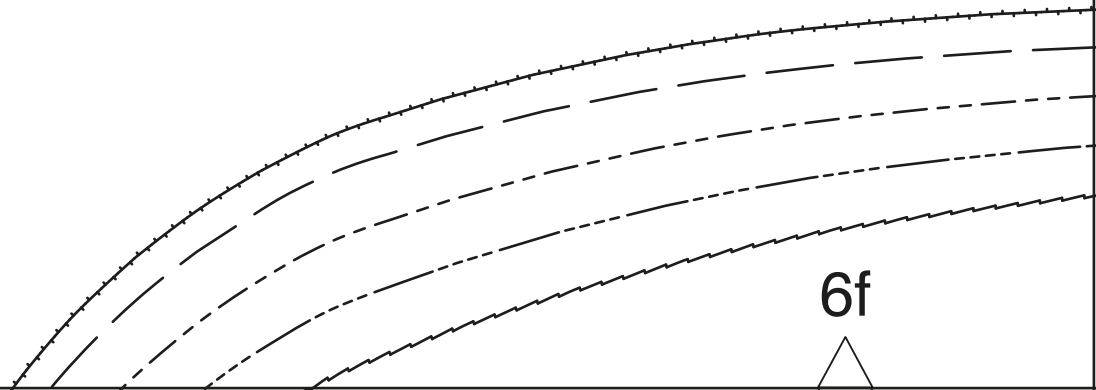
7e

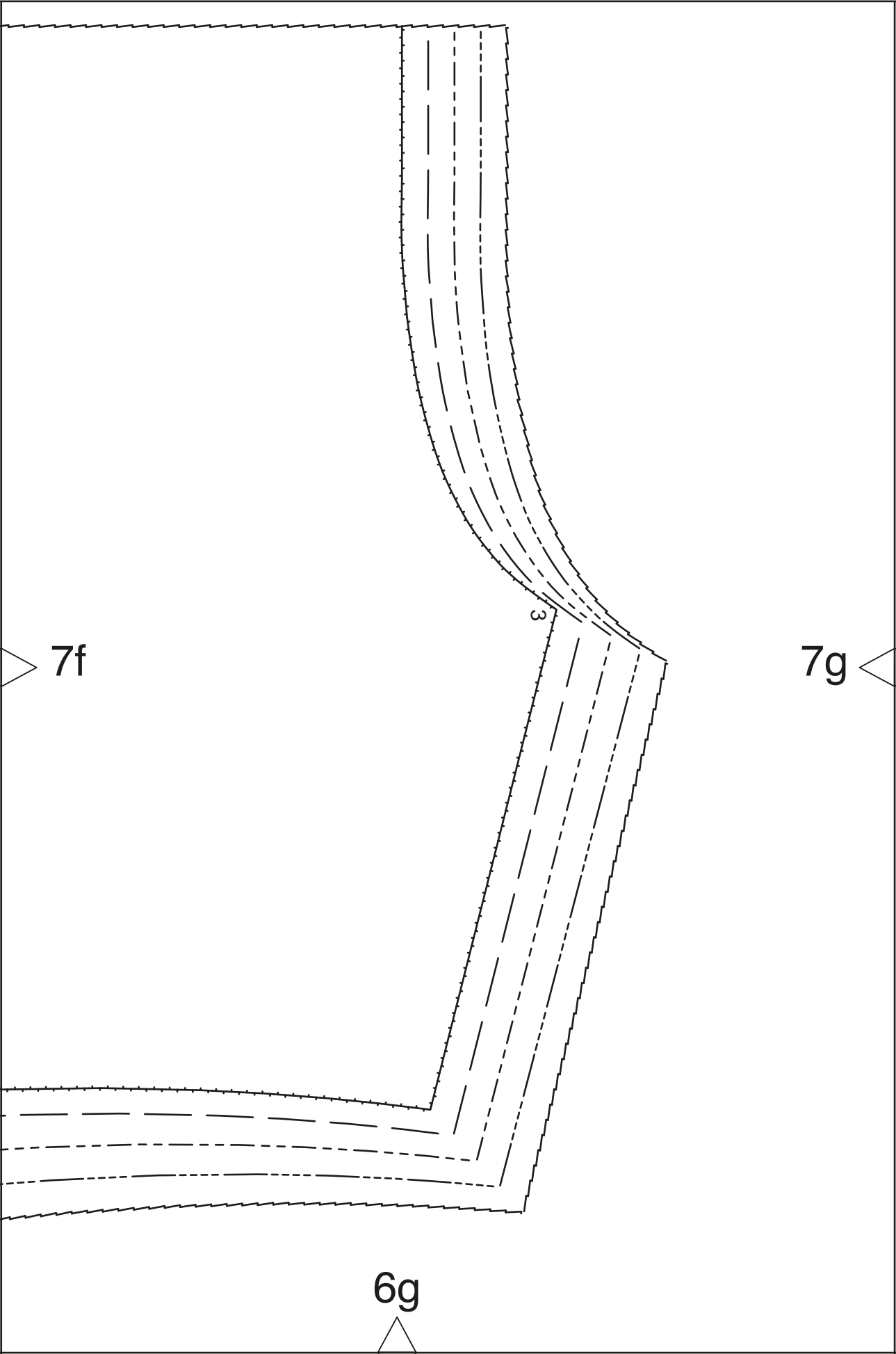
6e

7e

7f

6f





7f

7g

6g

3

vordere Mitte Stoffbruch Fadenlauf
center front fold straight grain
ПЕРЕДНЯЯ СЕРЕДИНА С ГИБ ТКАНИ НАПРАВЛЕНИЕ НИТИ

21

7g

6h

