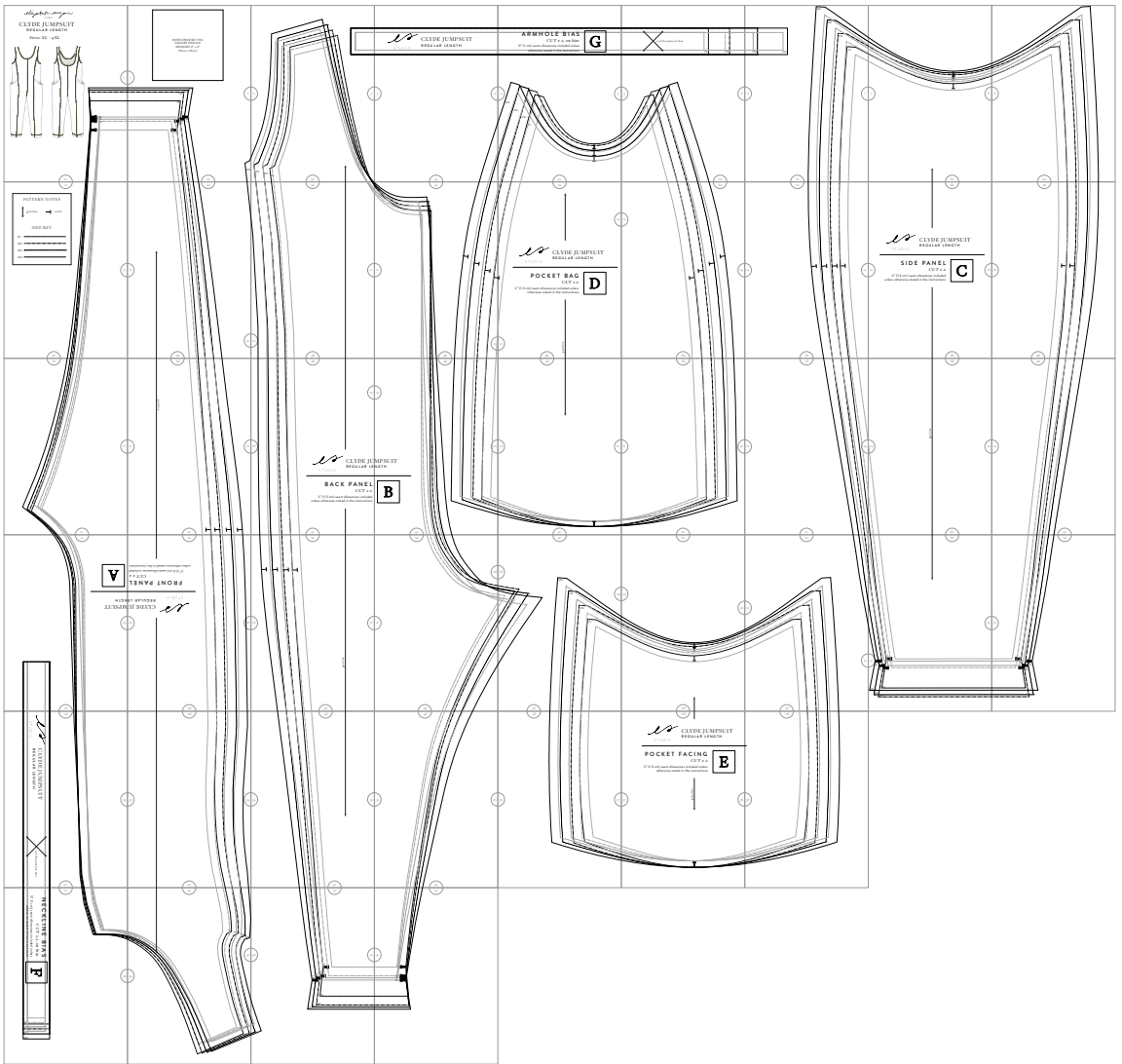


CLYDE JUMPSUIT

REGULAR LENGTH

Sizes: XL - 4XL

PRINT AT HOME PATTERN ASSEMBLY GUIDE

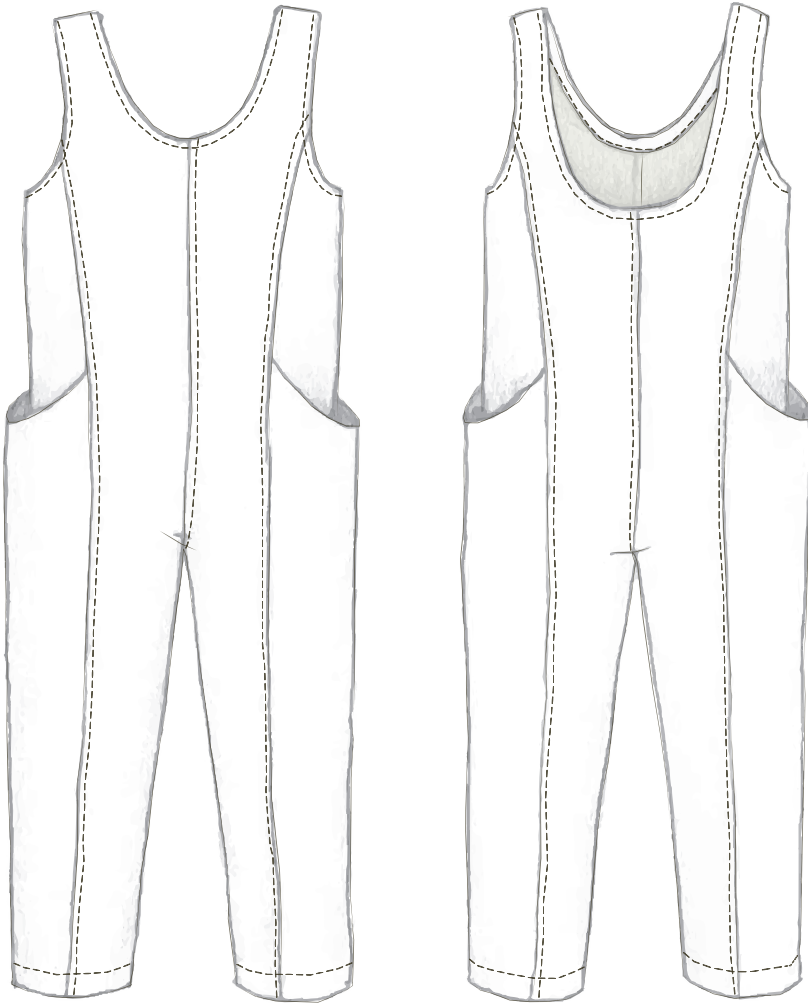


elizabeth suzann
STUDIO

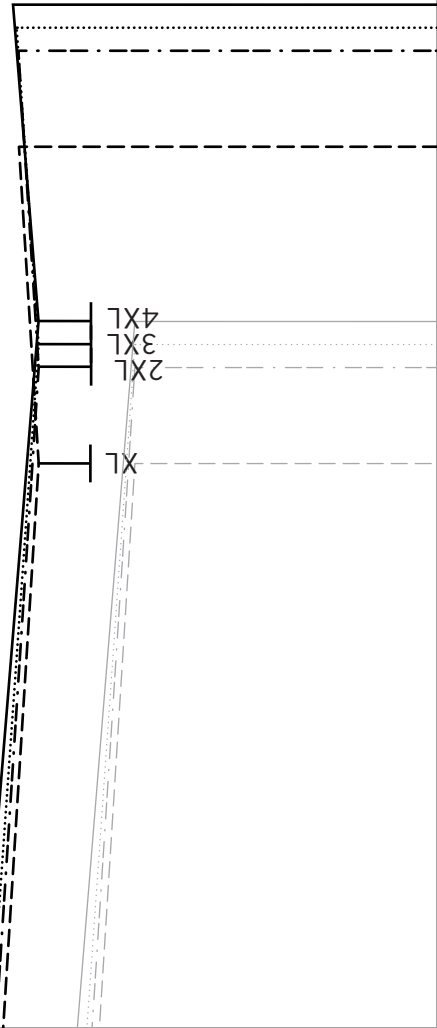
CLYDE JUMPSUIT

REGULAR LENGTH

Sizes: XL - 4XL



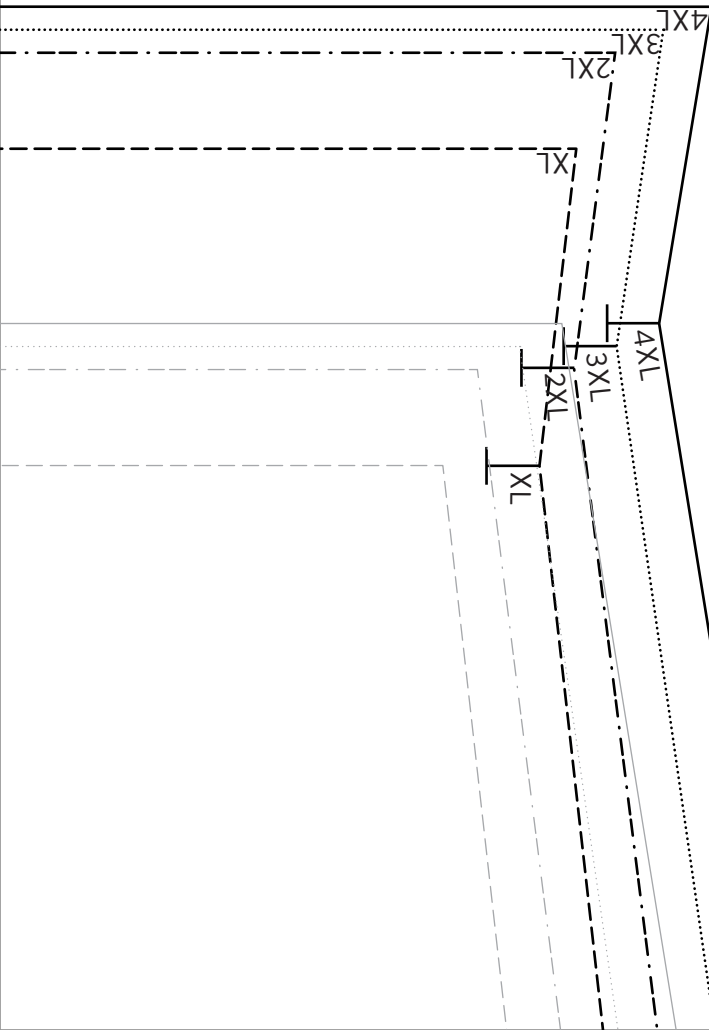
1



1a

WHEN PRINTED THIS
SQUARE SHOULD
MEASURE 4" x 4"
(10cm x 10cm)

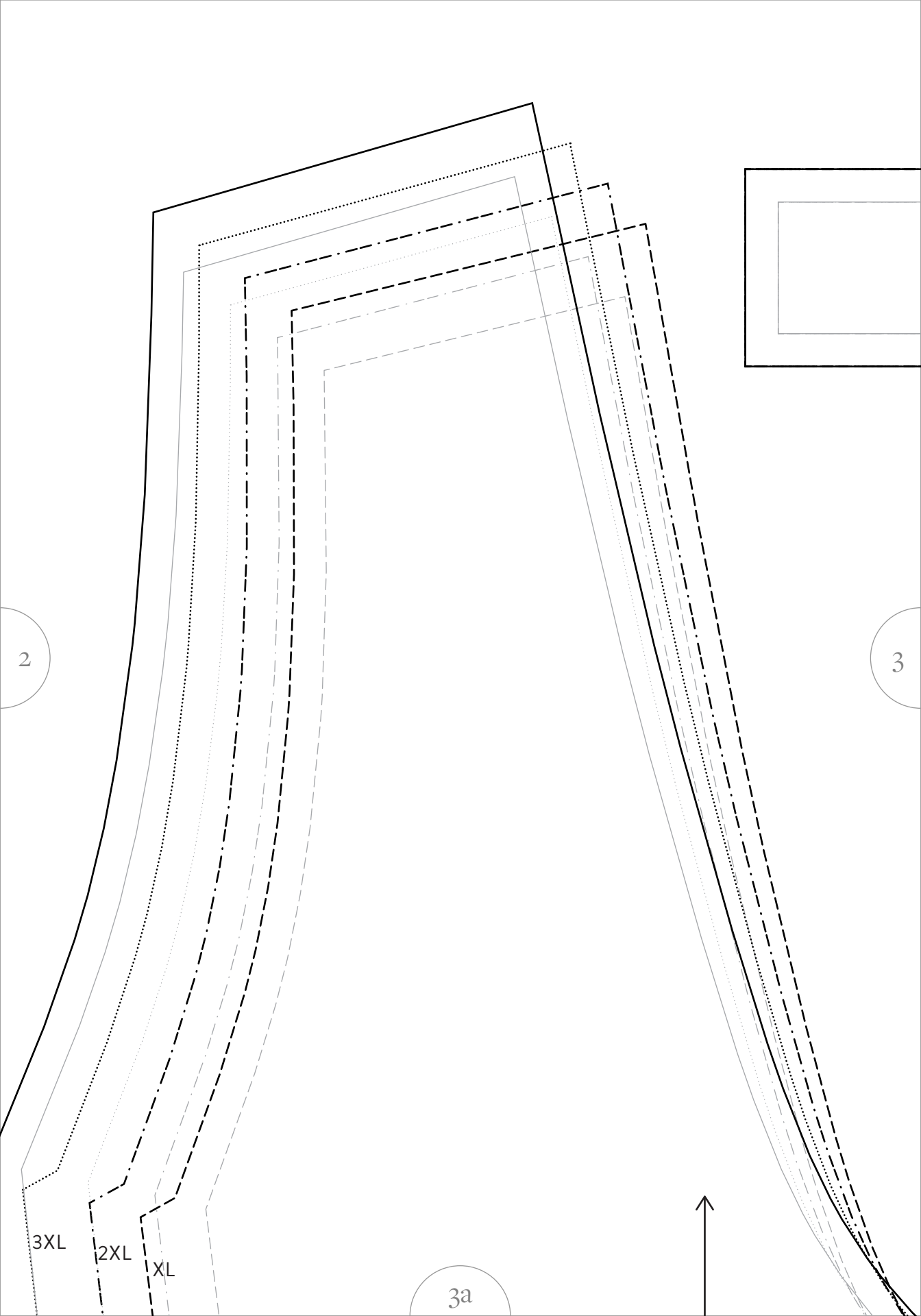
1



2

4XL

2a



2

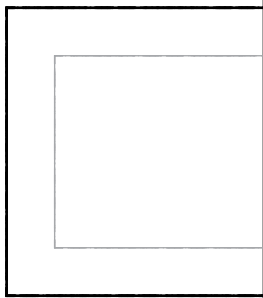
3

3XL

2XL

XL

3a





STUDIO

CLYDE JUMPSUIT
REGULAR LENGTH

3

4

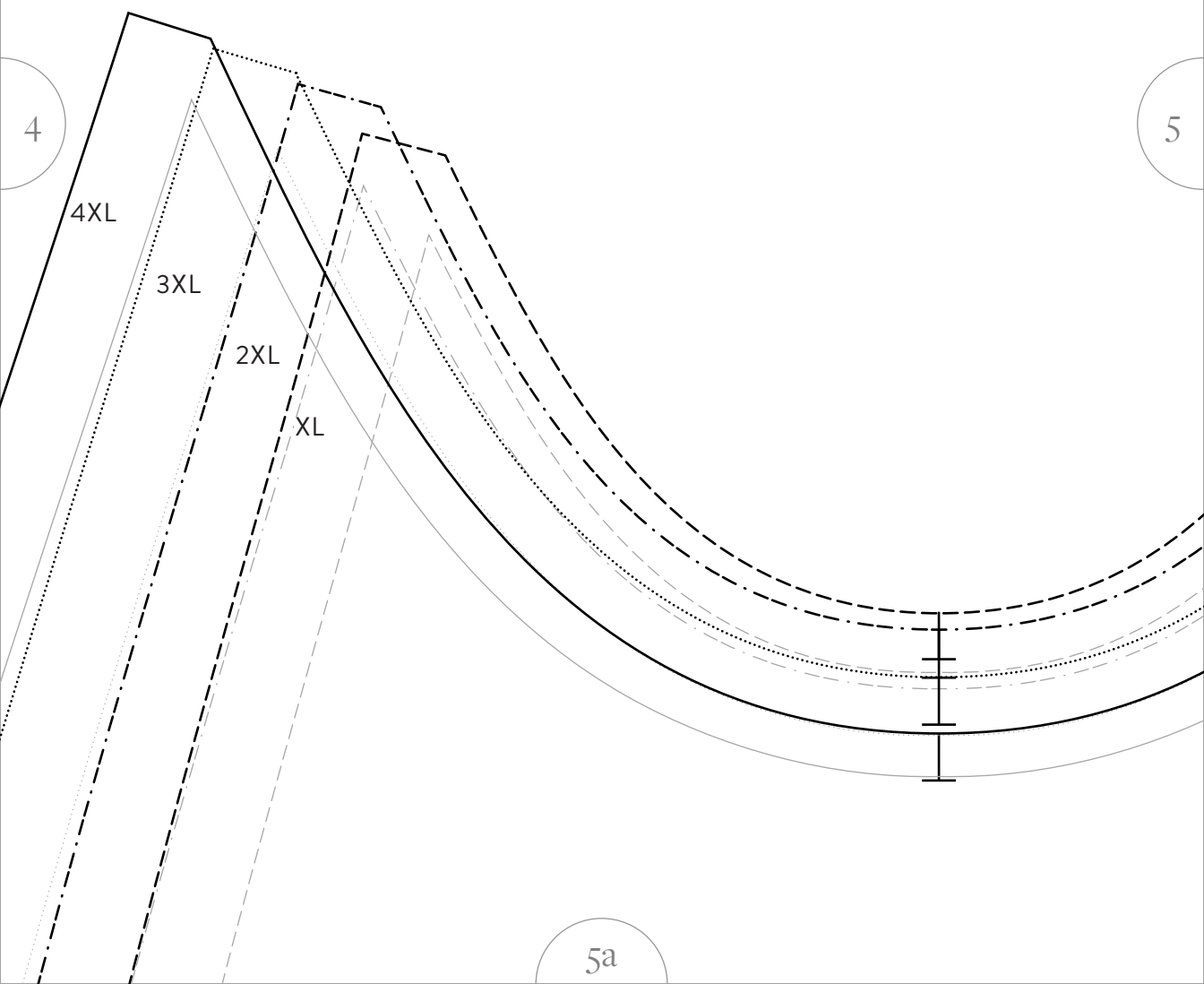
4a

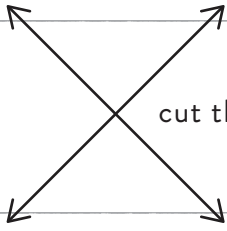
ARMHOLE BIAS

CUT x 2, on bias

¼" (0.6 cm) seam allowances included
unless otherwise stated in the instructions

G





cut this piece on bias

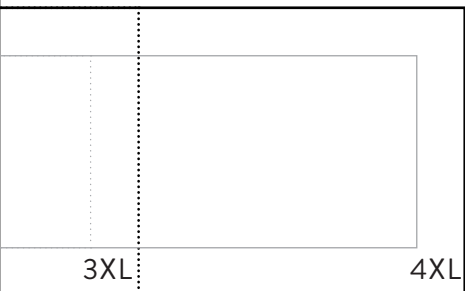
XL

2XL

5

6

6a



4XL

3XL

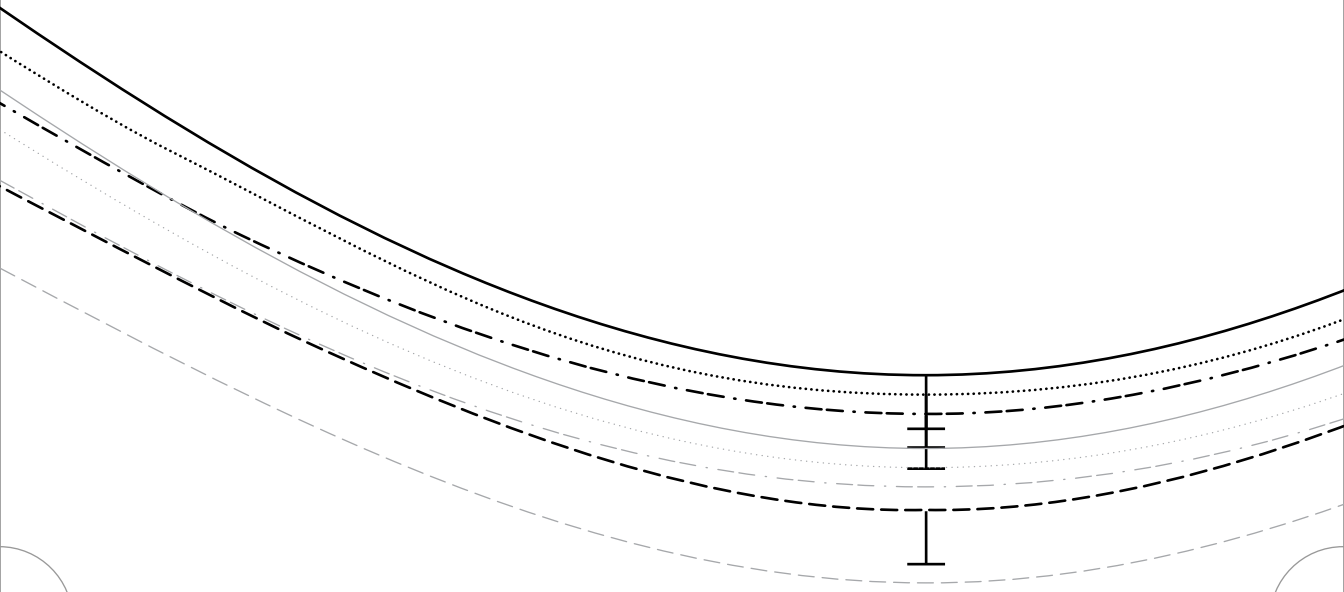
2XL

XL

6

7

7a

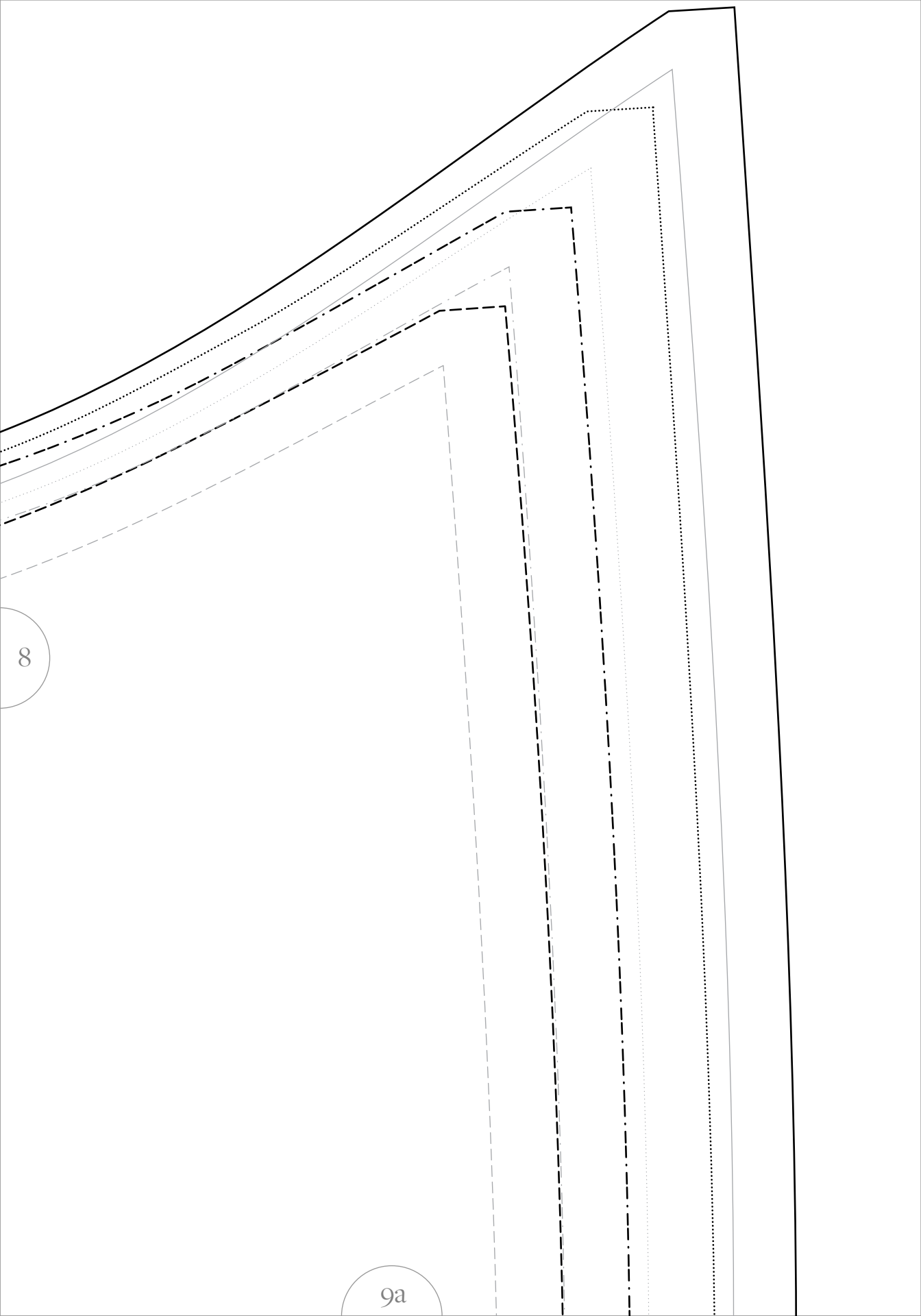


7

8



8a



8

9a

PATTERN NOTES



grainline



notch

SIZE KEY

XL -----

2XL - - - - -

3XL
.....

4XL _____

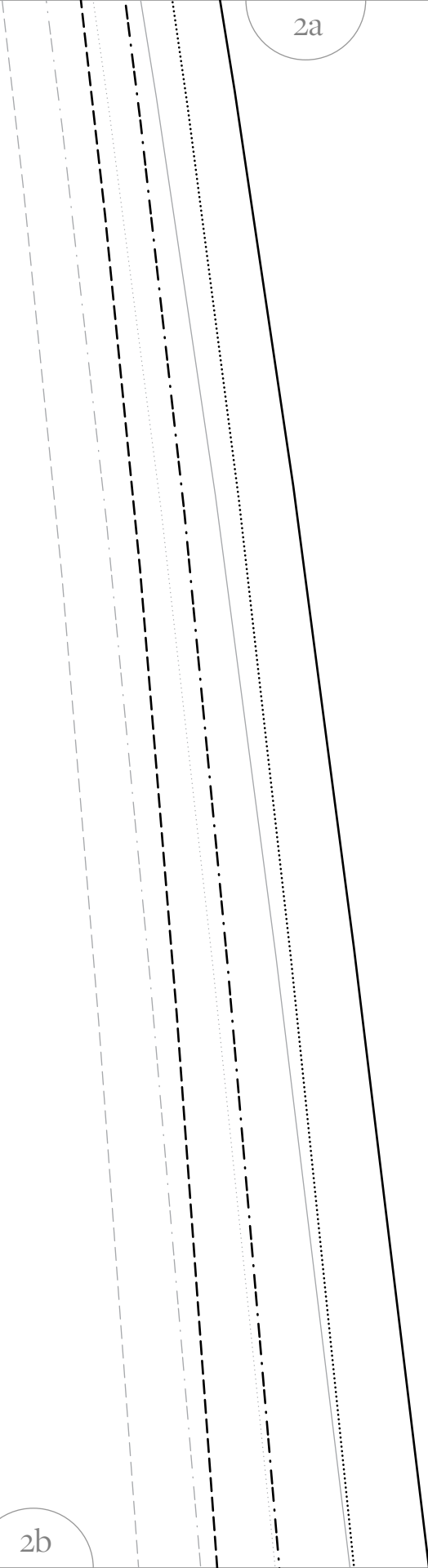
9



2b

2a

10



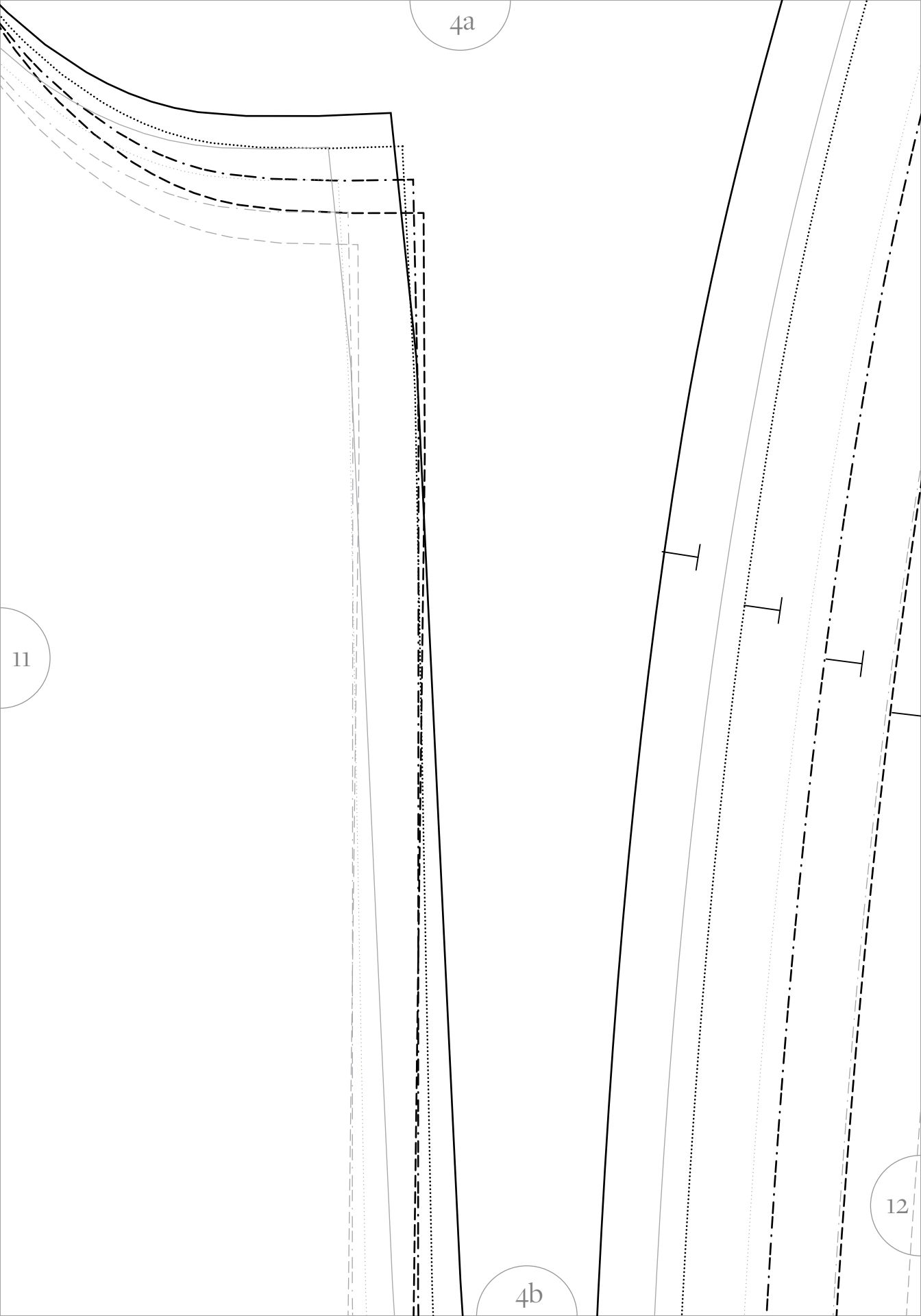
3a

11

10

3b

4a



11

4b

12

5a

13



STUDIO

CLYDE JUMPSUIT
REGULAR LENGTH

POCKET BAG

CUT x 2

½" (1.3 cm) seam allowances included unless
otherwise stated in the instructions

D

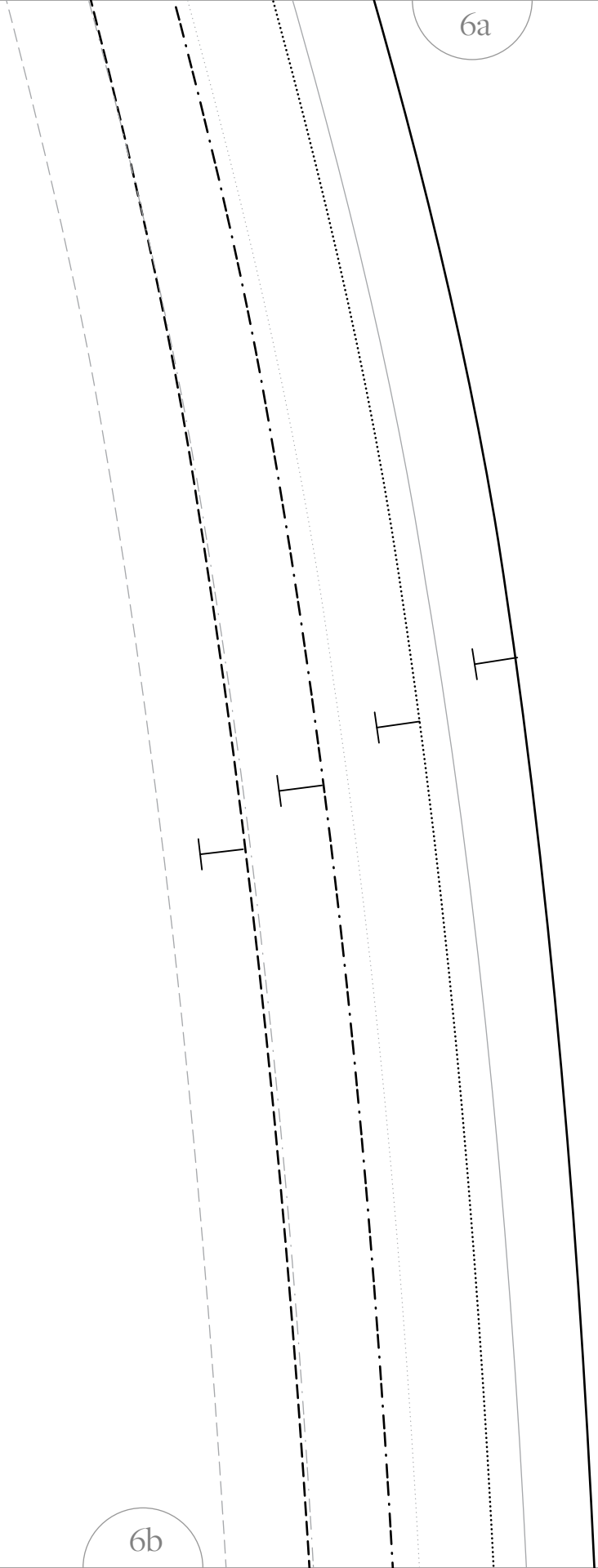
grainline

5b

12

13

6a



14

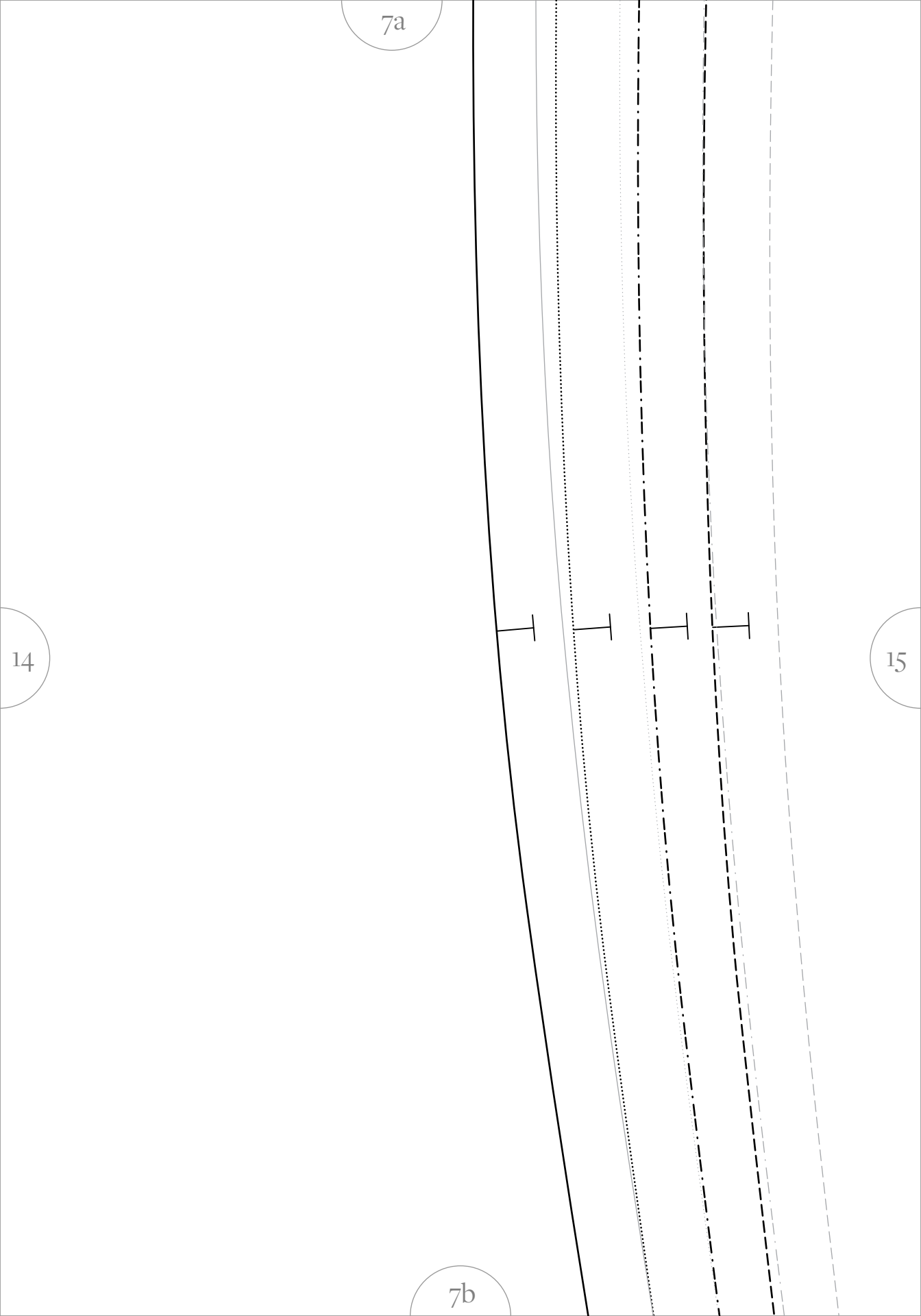
6b

7a

14

15

7b



8a



STUDIO

CLYDE JUMPSUIT
REGULAR LENGTH

SIDE PANEL

CUT x 2

½" (1.3 cm) seam allowances included
unless otherwise stated in the instructions

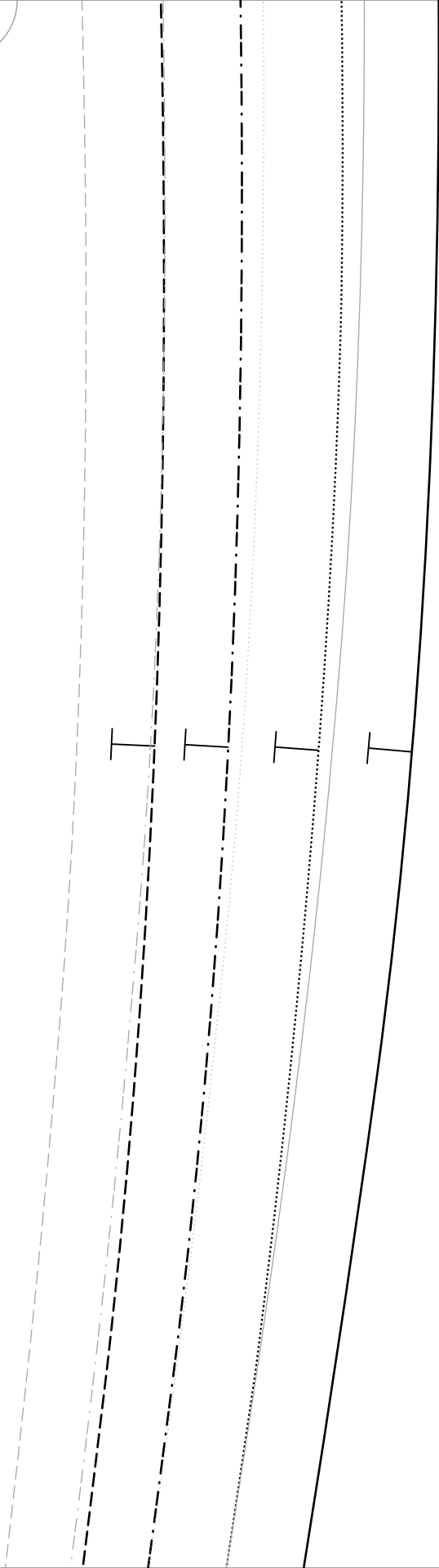
C

16

8b

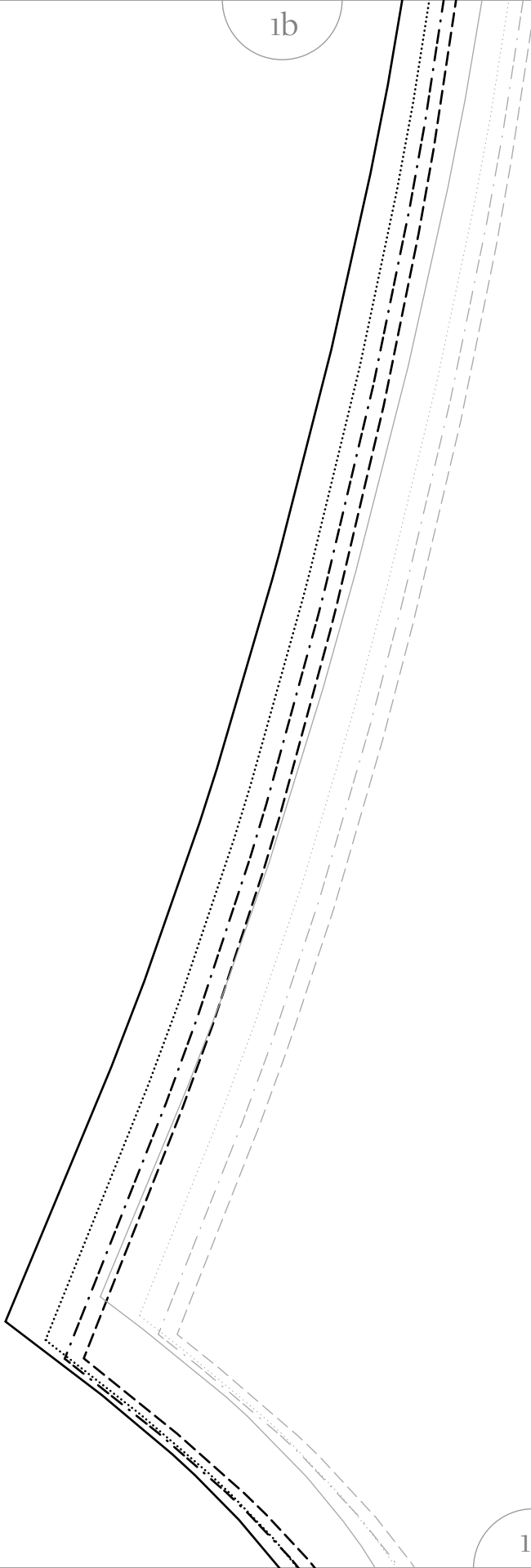
15

9a



9b

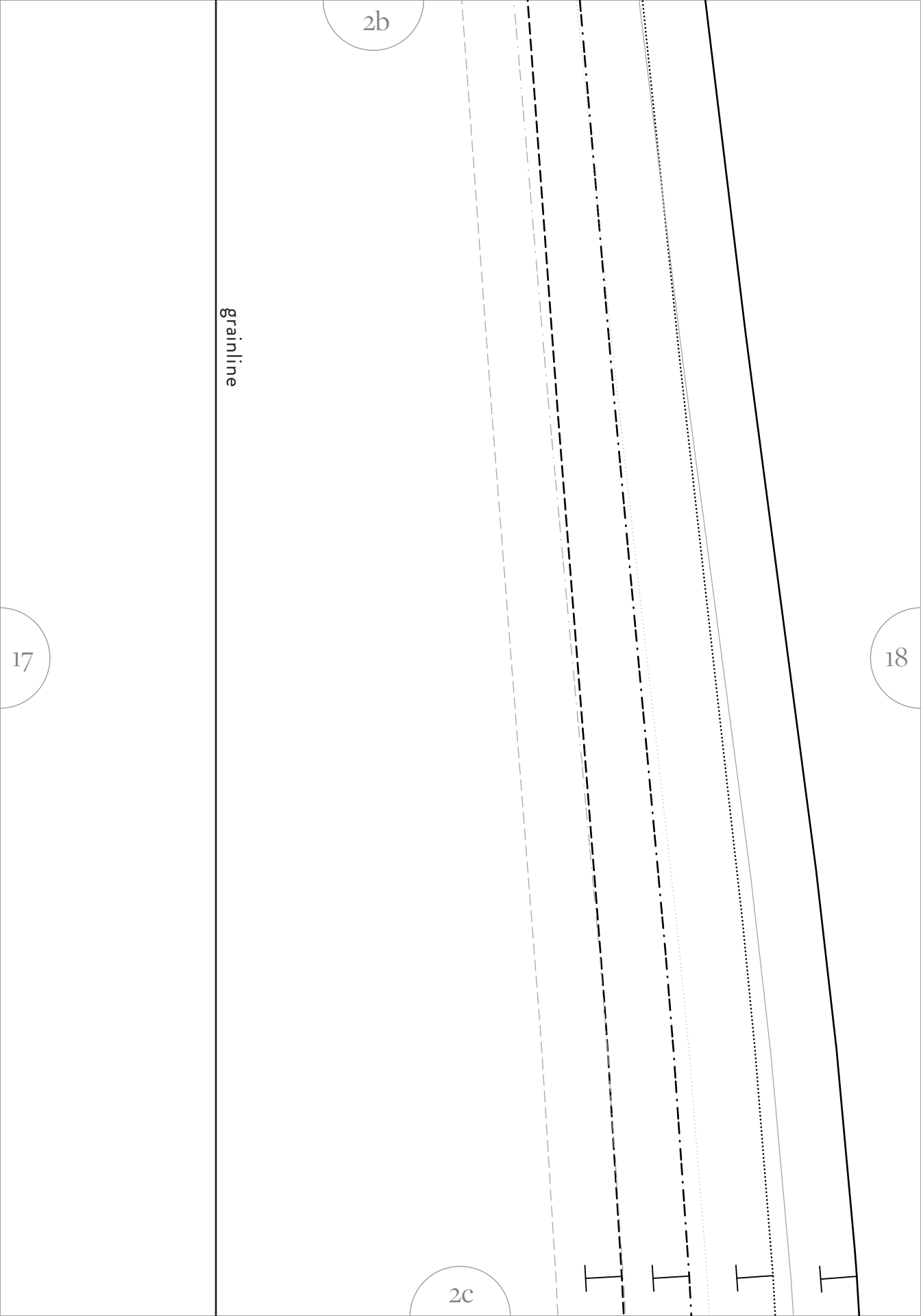
1b



17

1c

grainline



3b

19

18



STUDIO

CLYDE JUNIOR
REGULAR LENGTH

BACK PANEL

CUT x 2

½" (1.3 cm) seam allowances included
unless otherwise stated in the instructions

3c

19

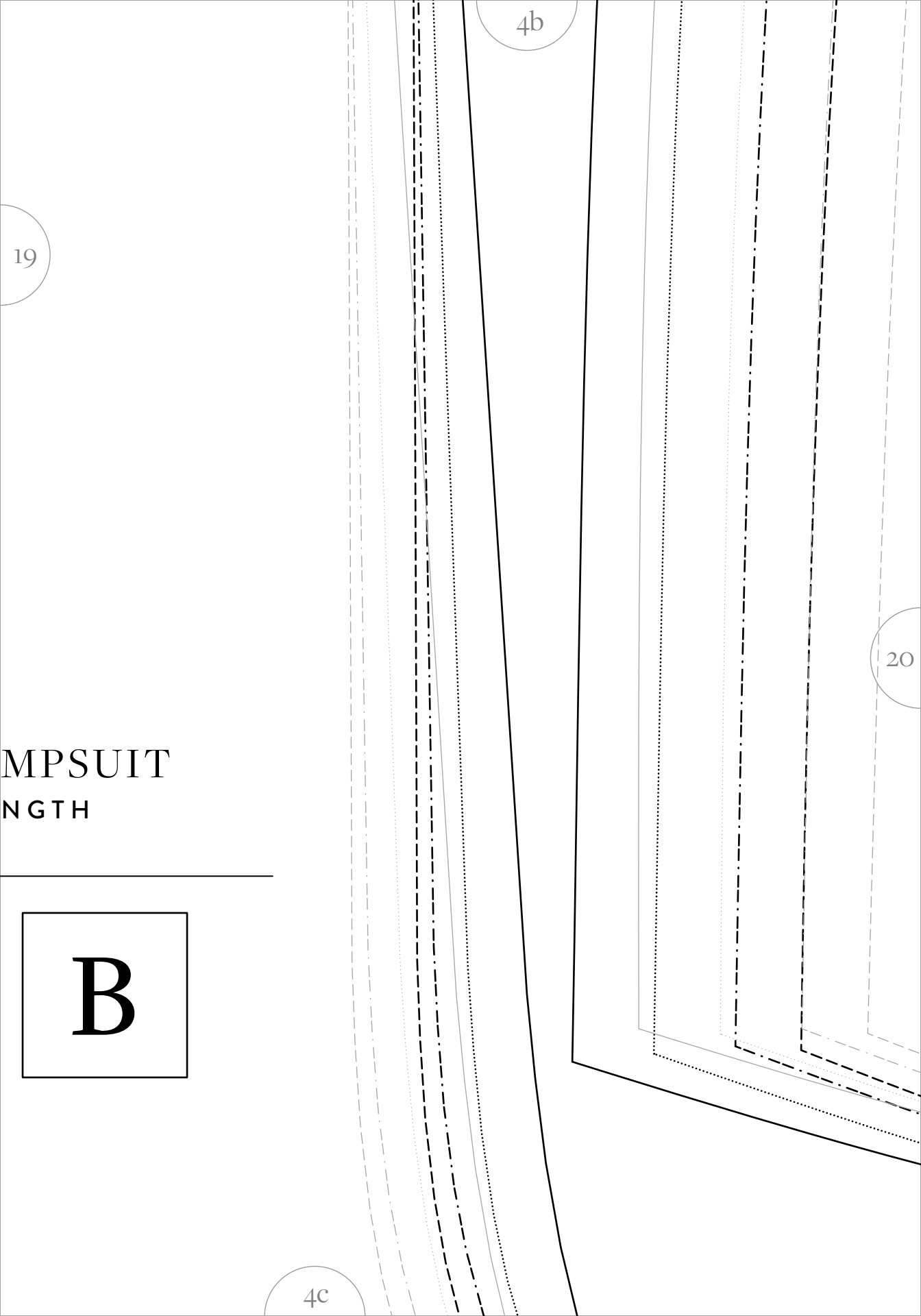
4b

20

MPSUIT
LENGTH

B

4c



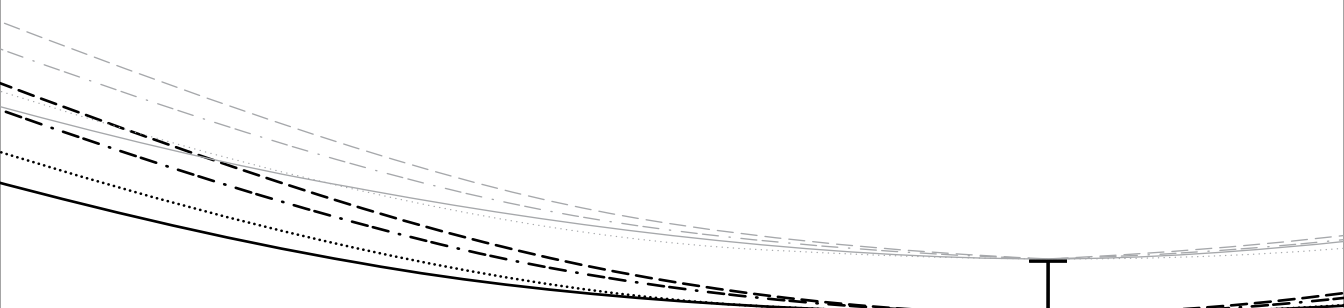
5b



20

21

5c

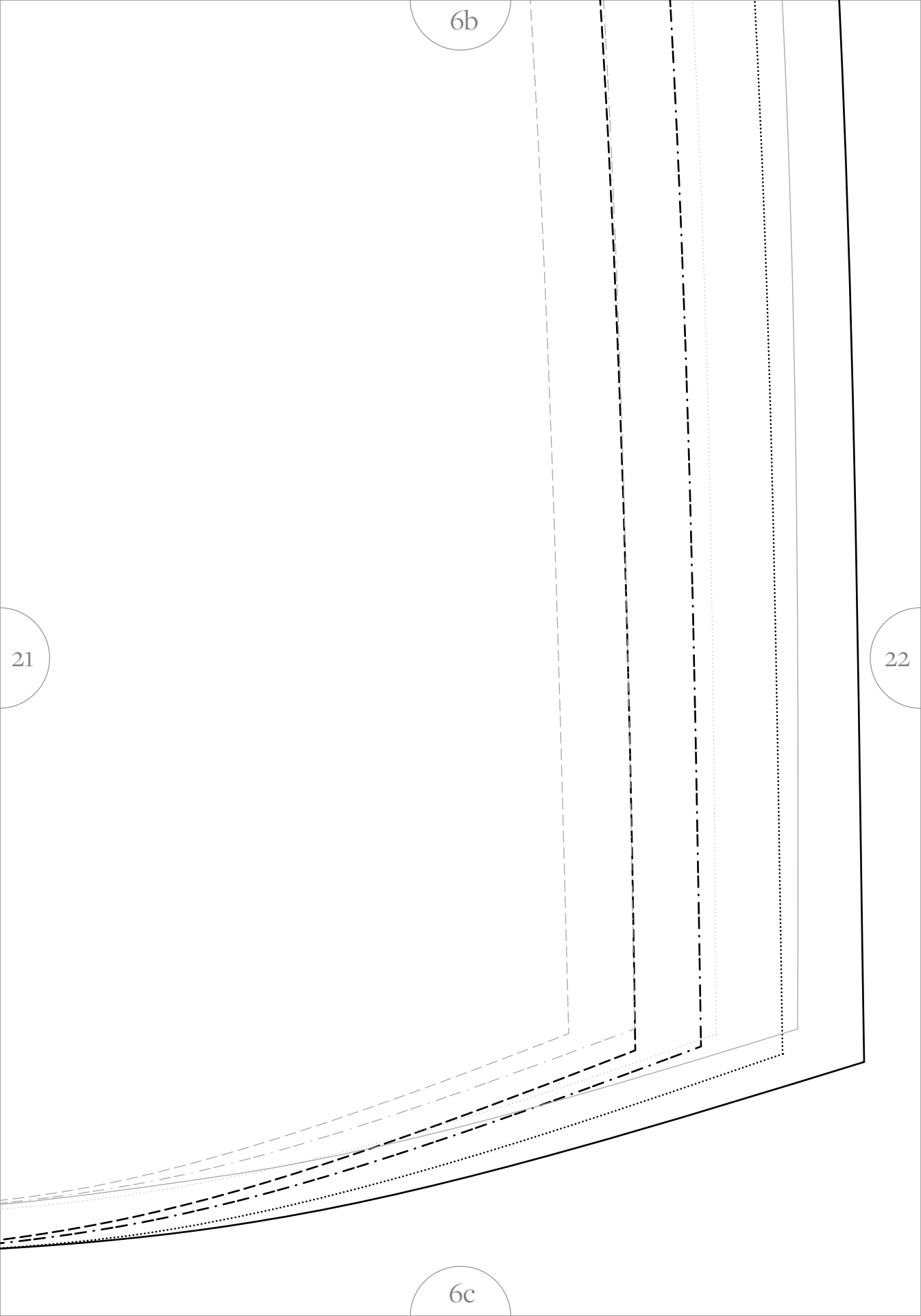


6b

21

22

6c



7b

22

23

7c

8b

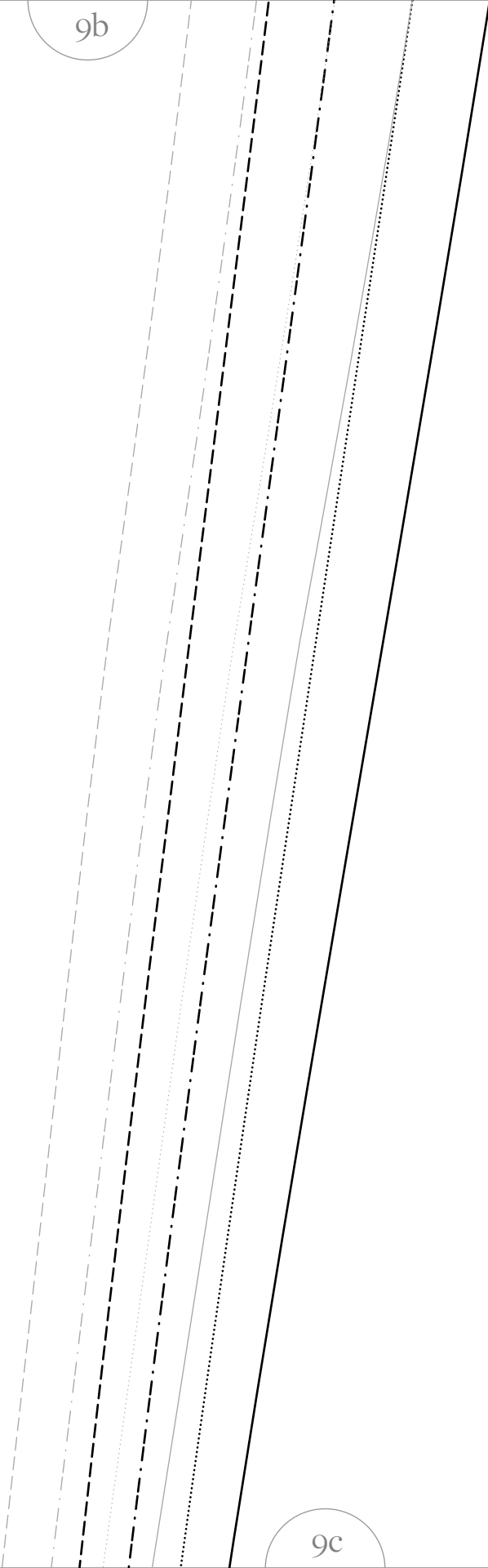
grainline

24

8c

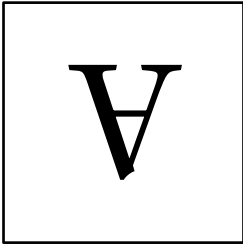
23

9b



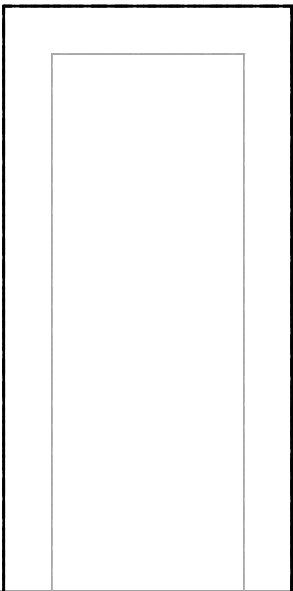
9c

1c



MP SUIT
HIGH
NIGHT

25



1d

unless otherwise stated in the instructions
1/2" (1.3 cm) seam allowances included

CUT x 2

FRONT PANEL

STUDIO



CLYDE JU
REGULAR LE

3c



26

grainline

27

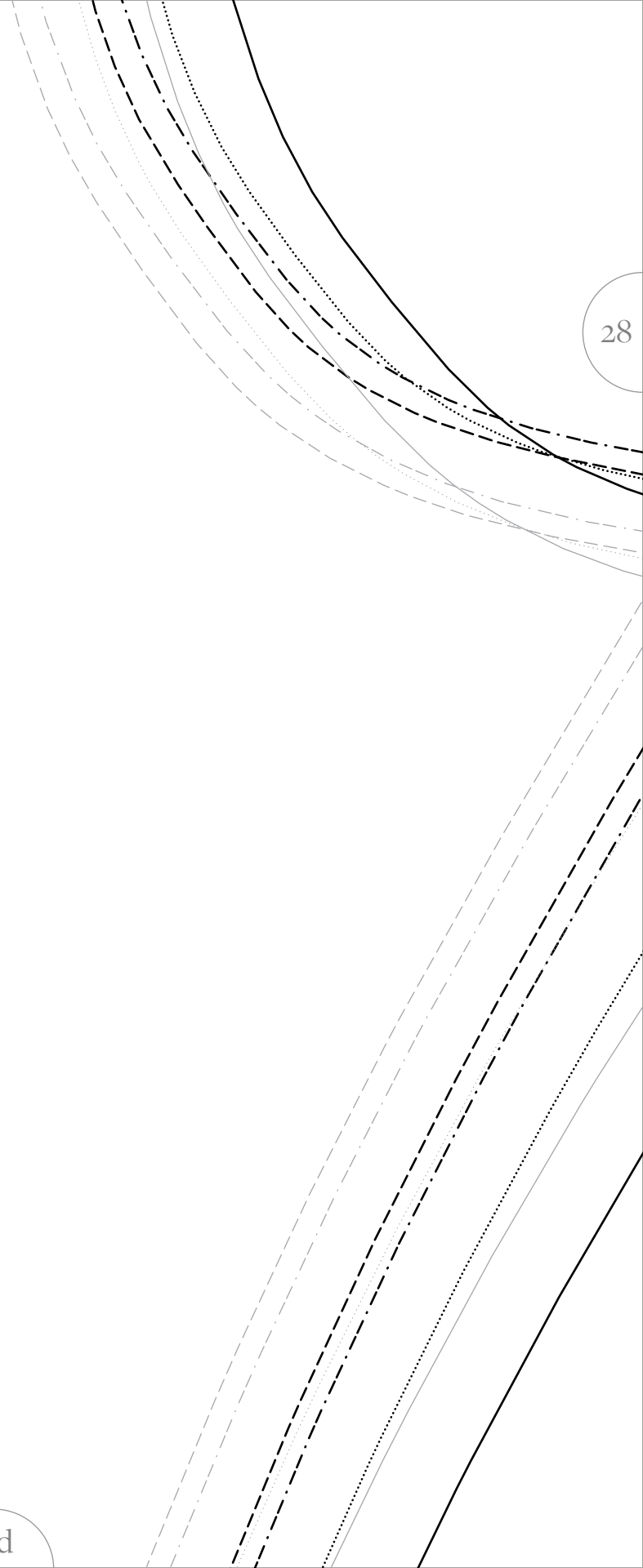
3d

4c

28

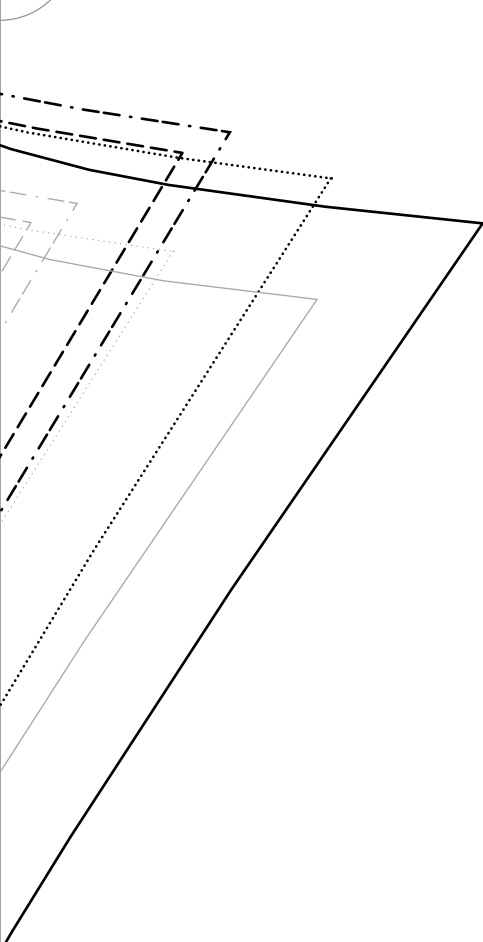
27

4d



5c

28



29

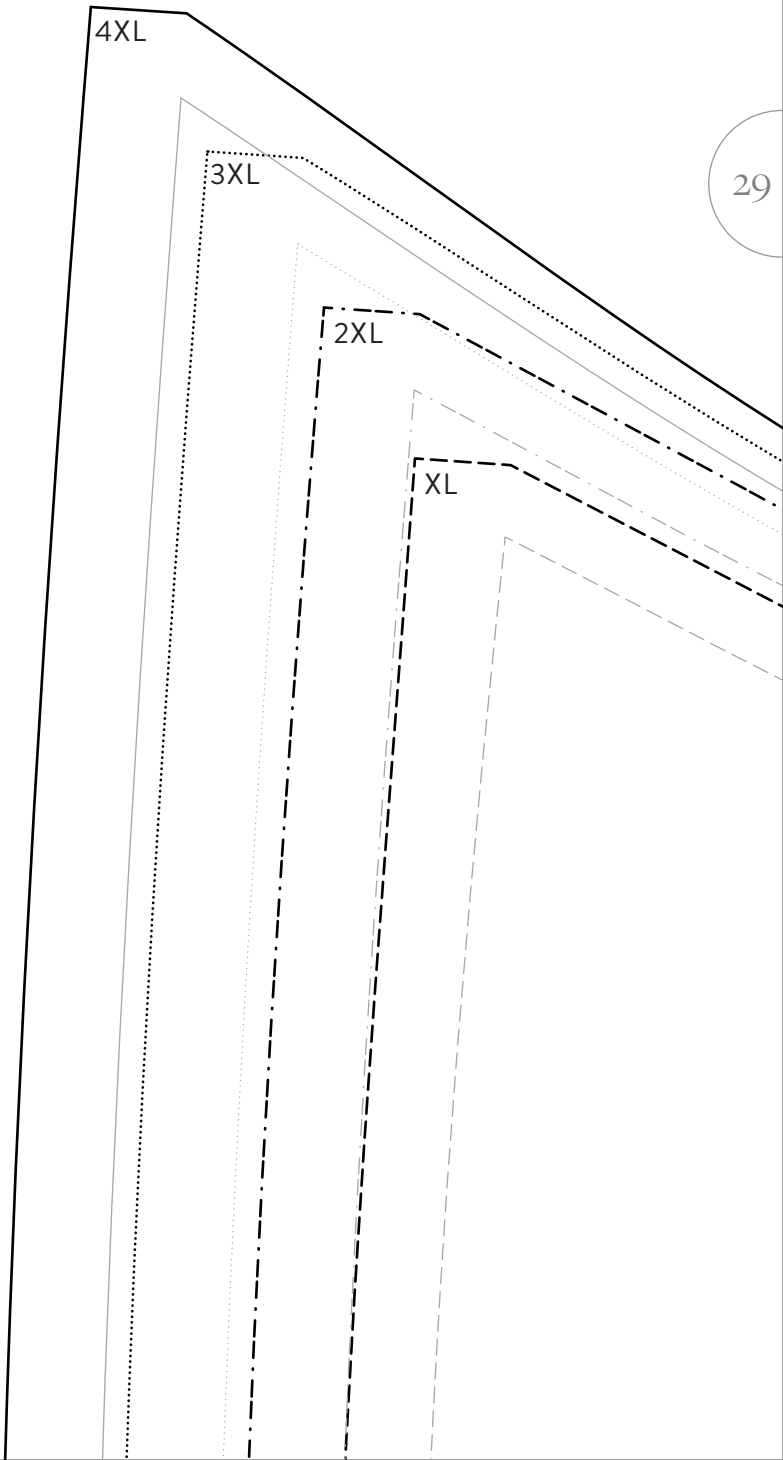
4XL

3XL

2XL

XL

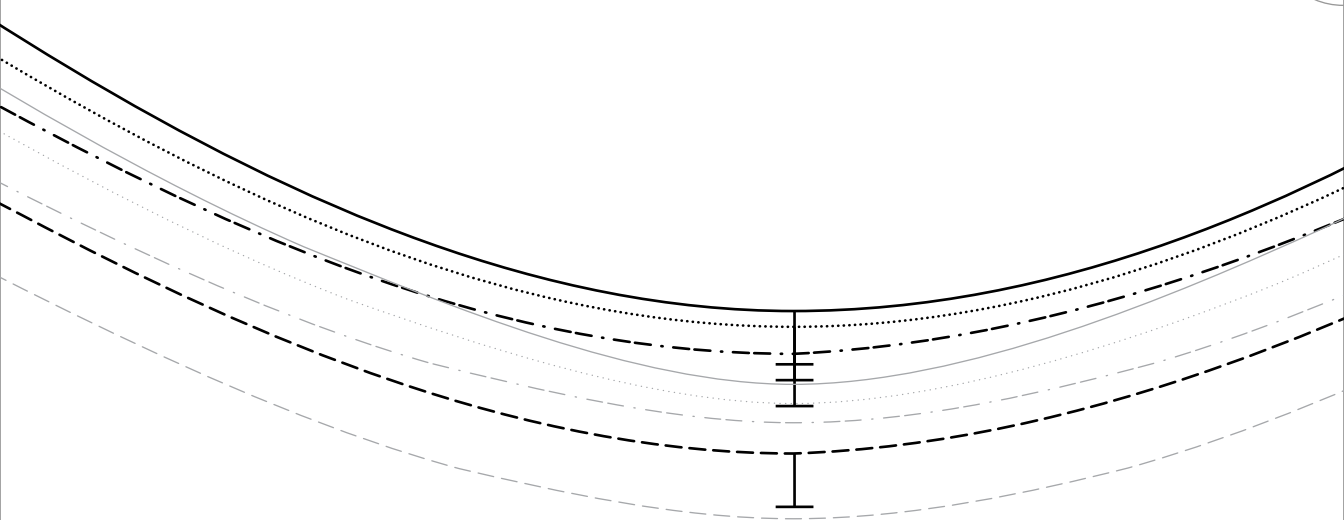
5d



6c

29

30



6d

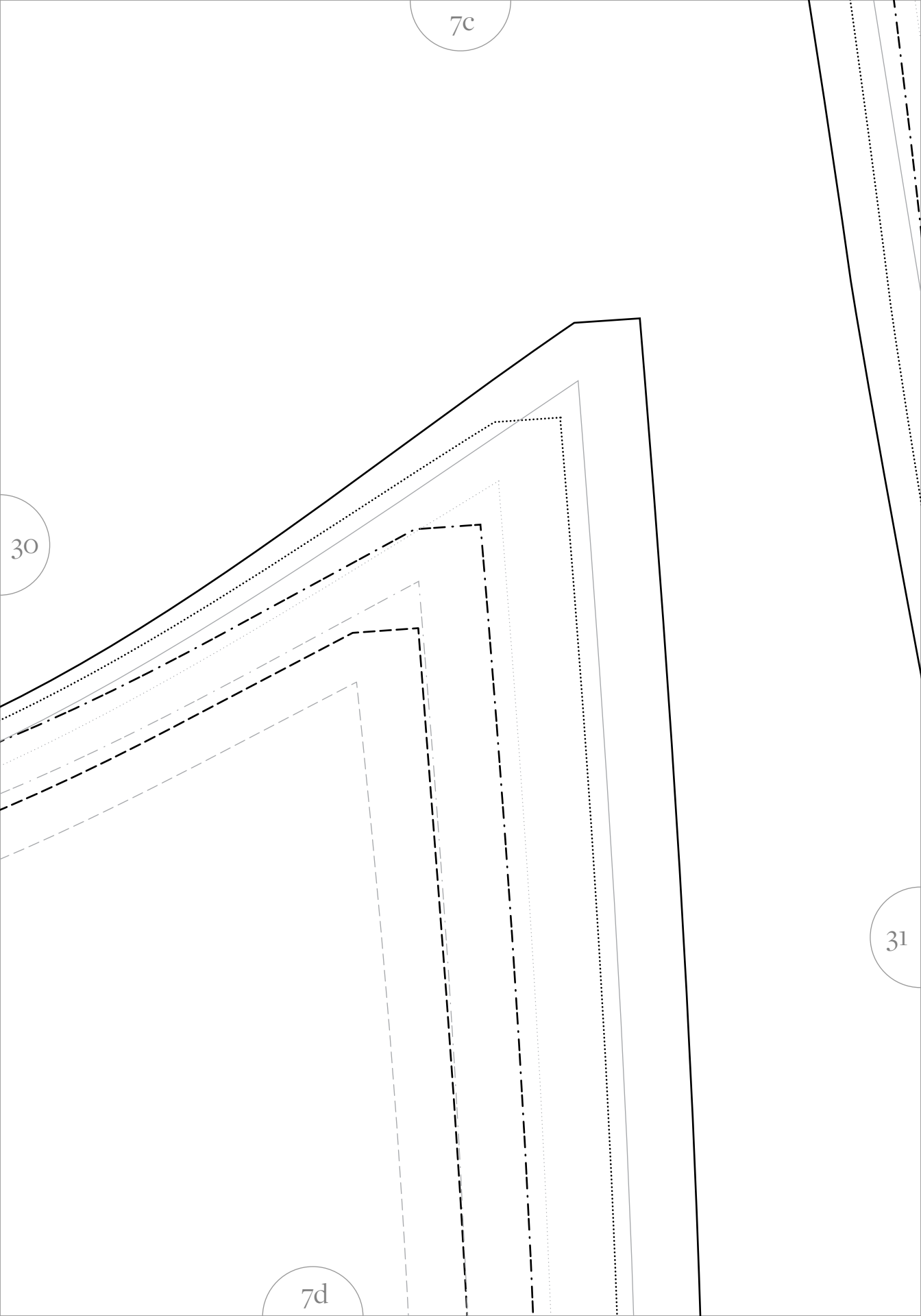


7c

30

31

7d



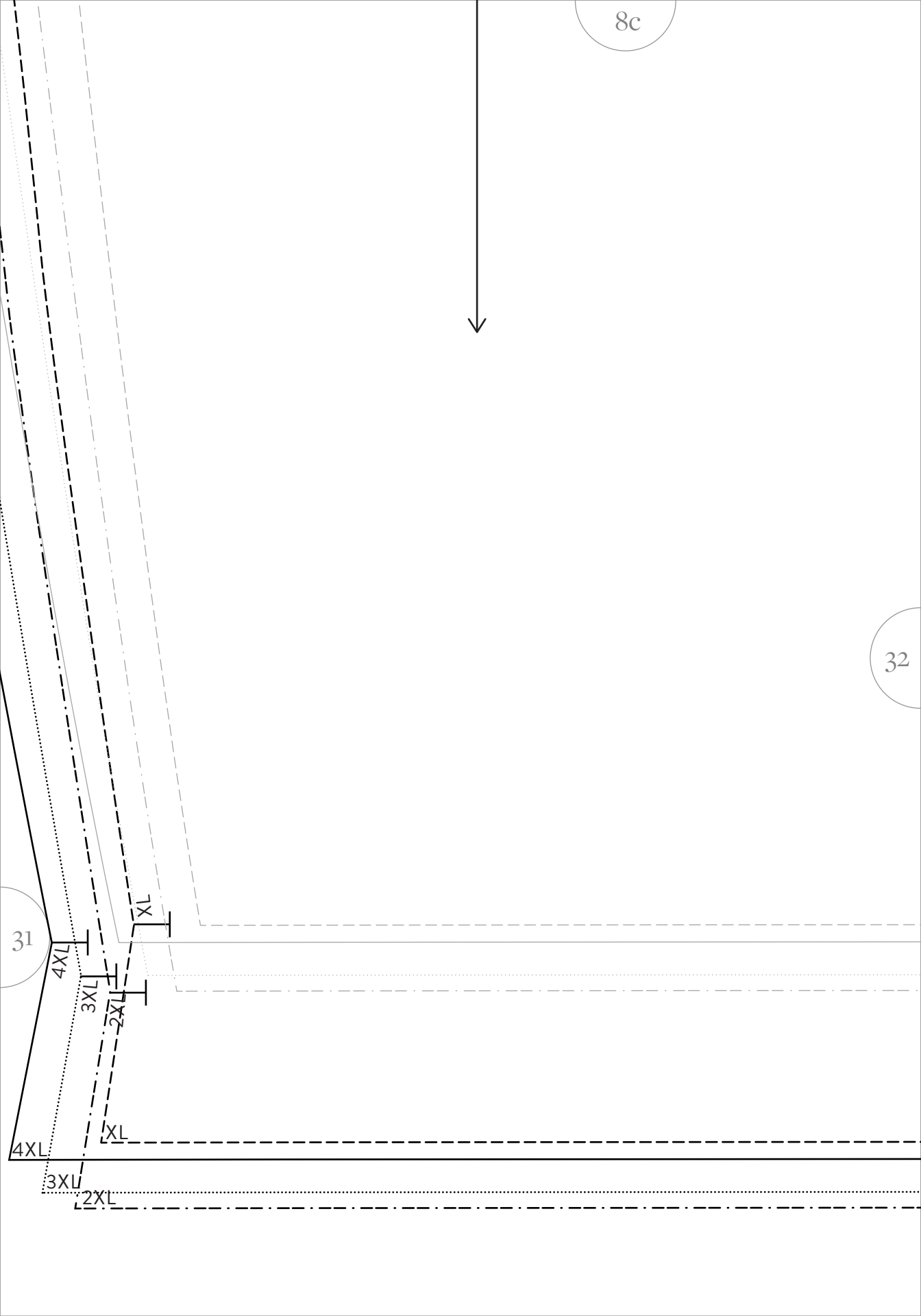
8c

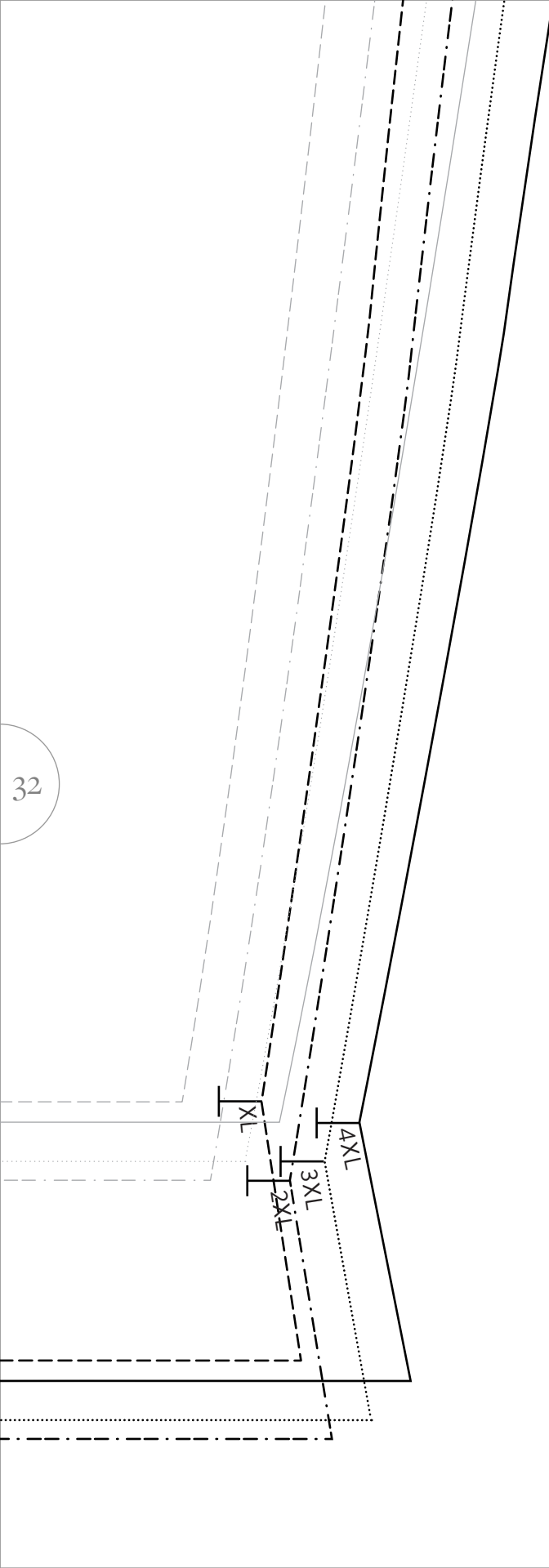


32

31

4XL
3XL
2XL
XL
4XL
3XL
2XL
XL



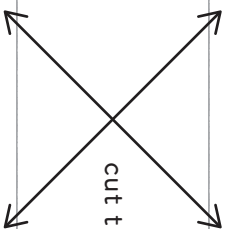


1d



STUDIO

CLYDE JUMPSUIT
REGULAR LENGTH



cut this piece on bias

1e

2d

33

34

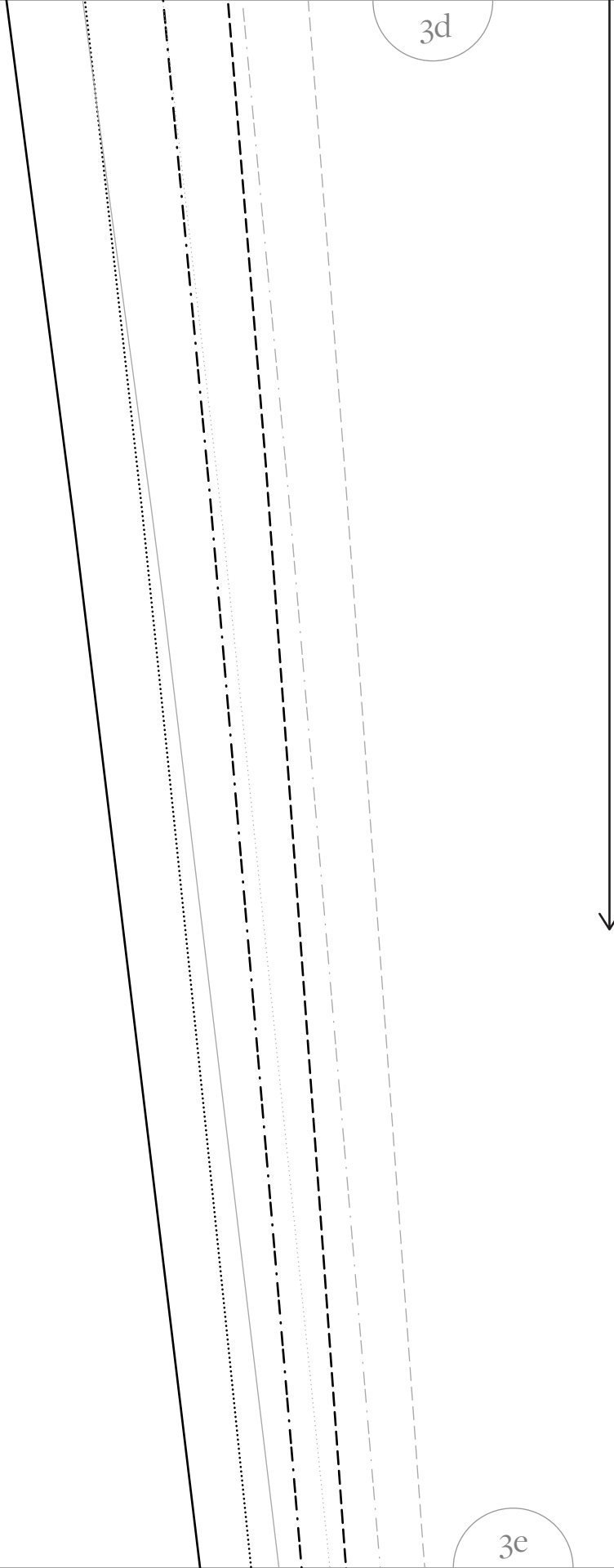
2e

3d

34

35

3e

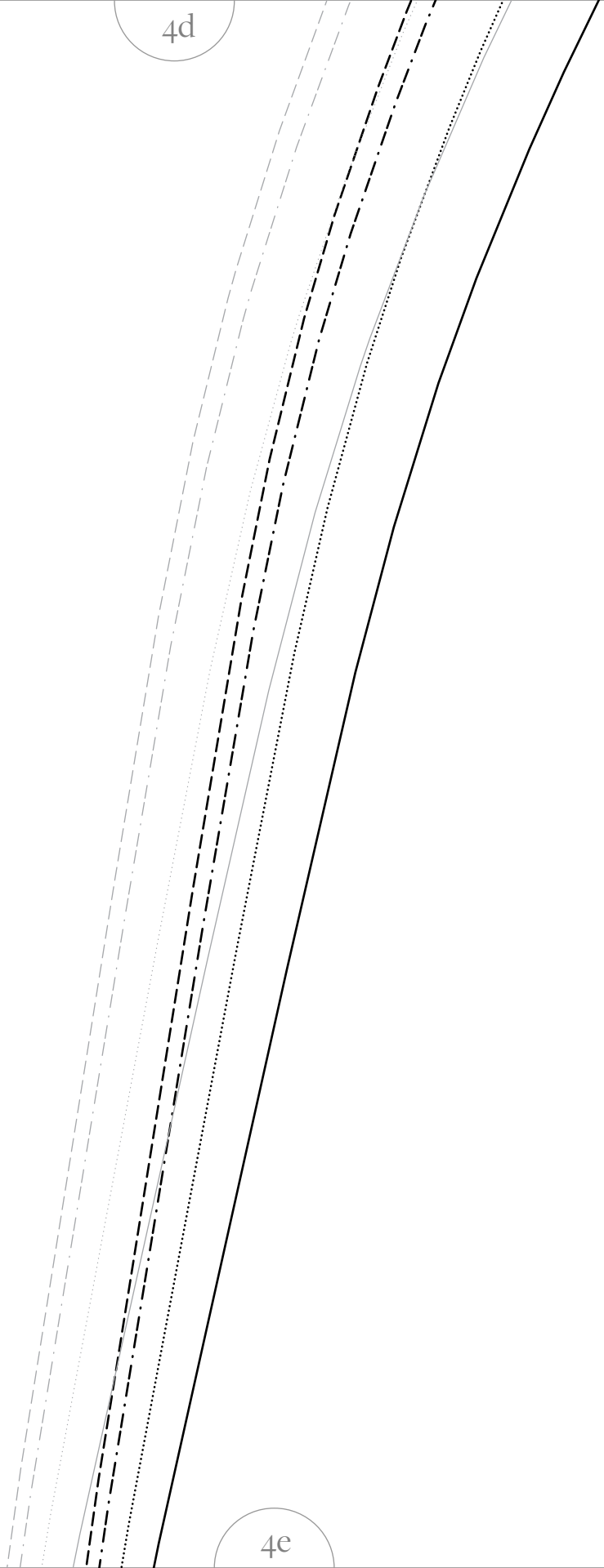


4d

35

36

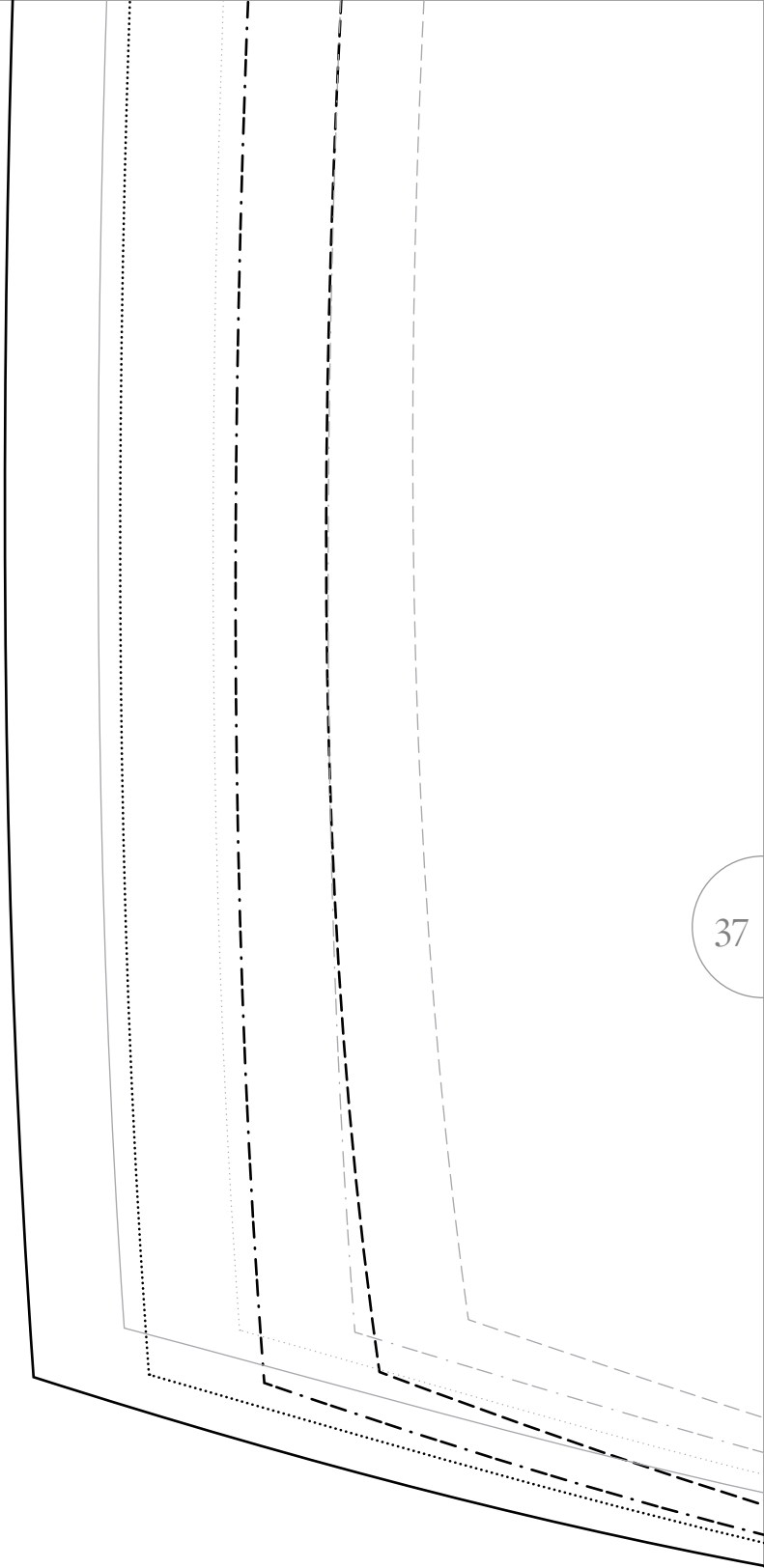
4e



5d

36

37





STUDIO

CLYDE JUMPSUIT
REGULAR LENGTH

POCKET FACING

CUT x 2

½" (1.3 cm) seam allowances included unless
otherwise stated in the instructions

E

grainline

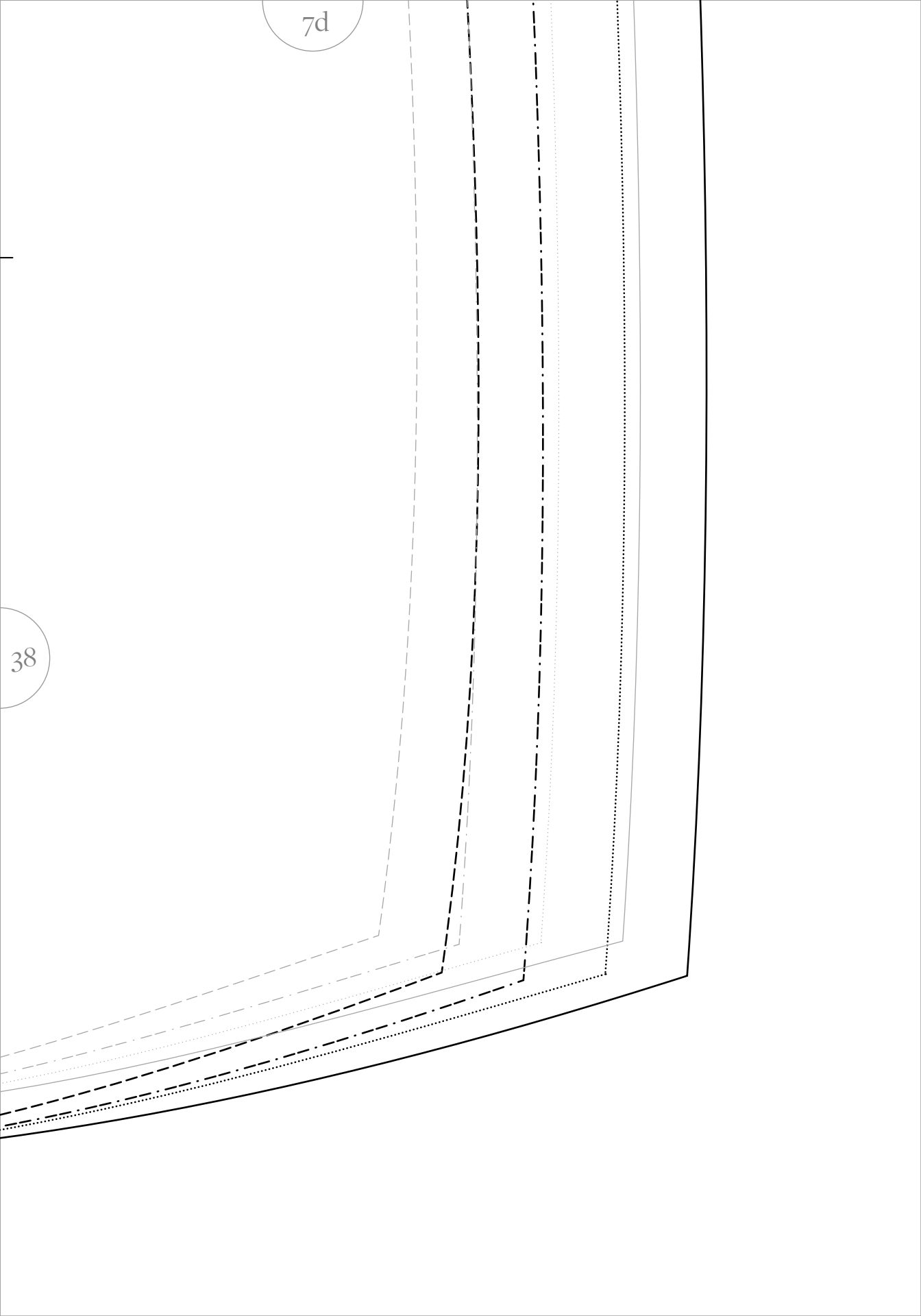


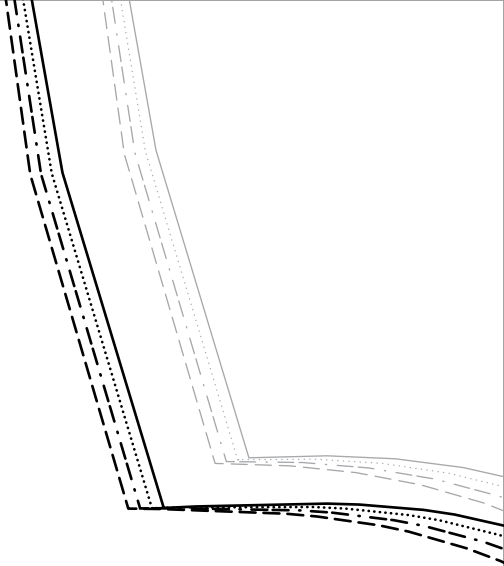
37

38

7d

38



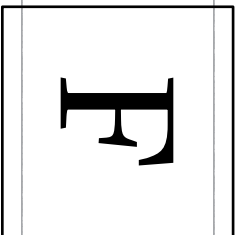


1e

NECKLINE BIAS

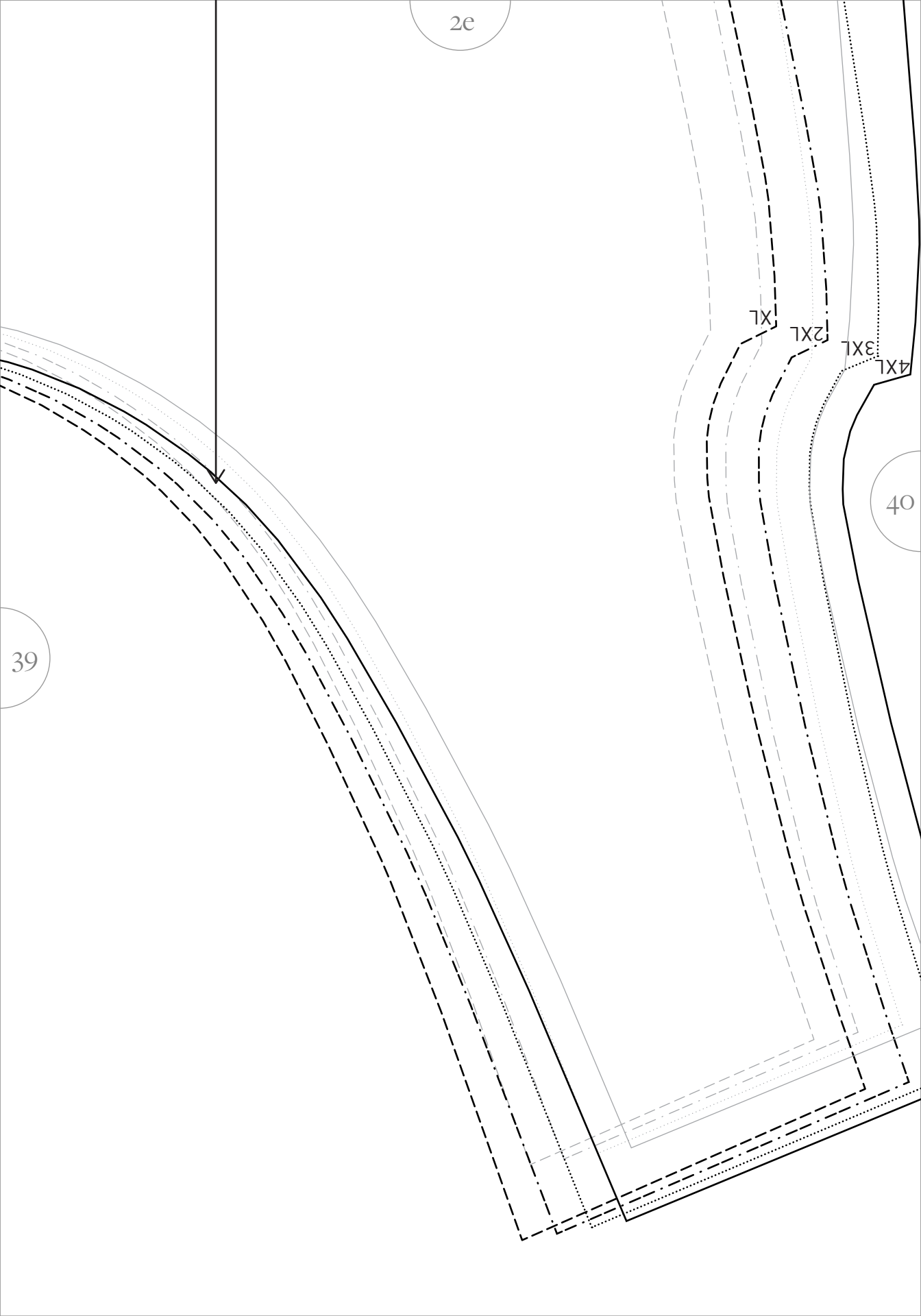
CUT x 2, on bias

1/4" (0.6 cm) seam allowances included
unless otherwise stated in the instructions



XL	
2XL	
3XL	
4XL	

2c



40

4XL

3XL

2XL

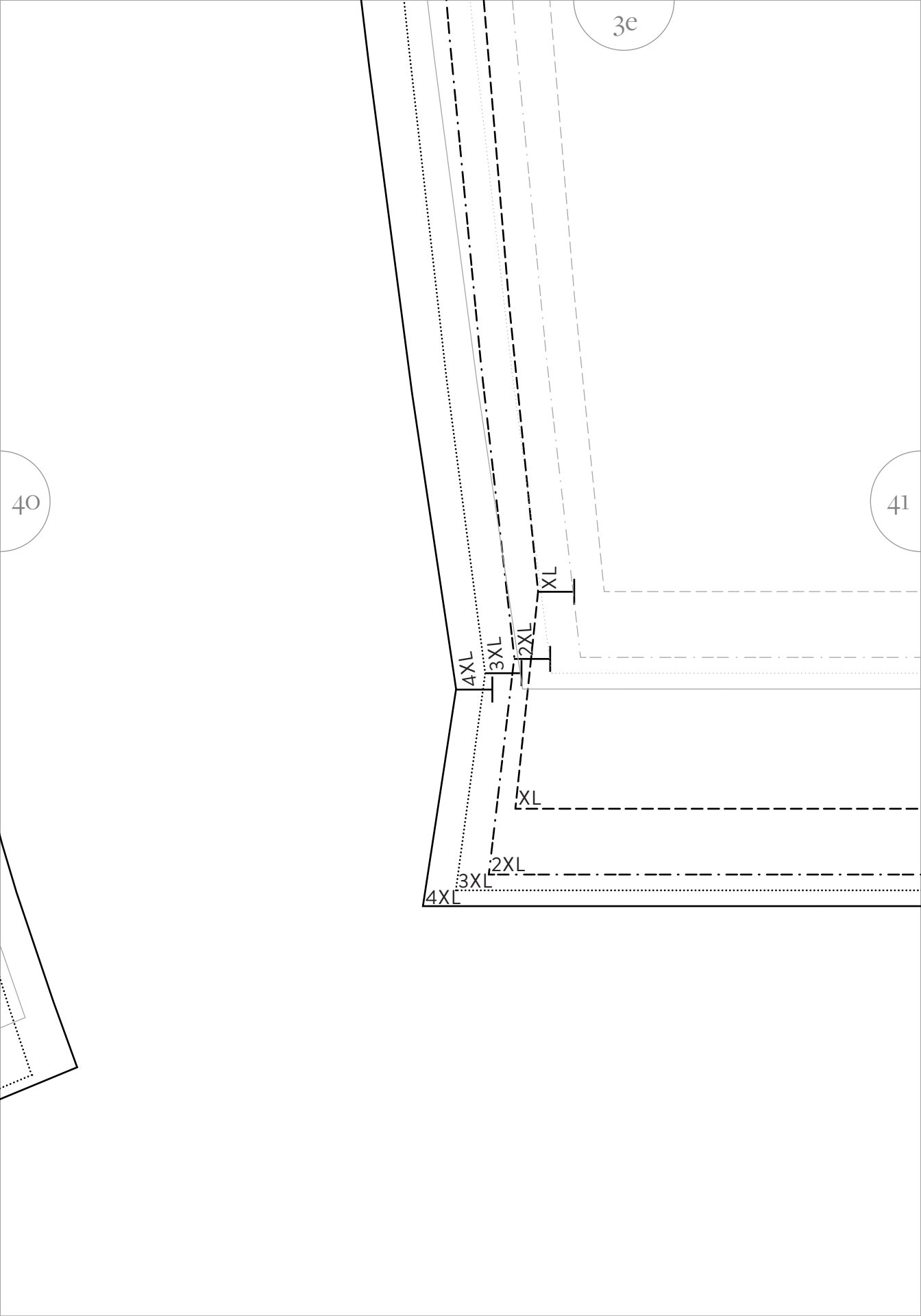
1XL

39

40

3e

41



4e

41

XL

2XL

3XL

4XL

