

# ACA JOU

## TAILLES SIZES

.....	34
.....	36
.....	38
.....	40
.....	42
.....	44
.....	46
.....	48
.....	50
.....	52

Le tableau des tailles figure au dos du livret d'instructions du patron.  
To choose your size, use the size chart on the pattern booklet.

## CARRÉ TEST 5X5CM TEST SQUARE 2X2"

Ce patron est réservé à un usage personnel. Toute reproduction ou utilisation commerciale de ce patron est interdite.

This pattern is for personal use only. Any reproduction or commercial use of this pattern is prohibited.

## SYMBOLES SYMBOLS



**DROIT-FIL STRAIGHT GRAIN**  
Placez cette ligne parallèlement à la lisière du tissu / Align this line parallel to the selvage of the fabric



**COUPER AU PLI CUT ON FOLD**  
Placez le bord de la pièce sur la pliure du tissu / Lay the edge of the pattern piece on the fold of the fabric

Des marges de couture de 1,5cm  
5/8" seam allowances are included in the pattern.

A1

# PLANCHE 1/2 - VERSIONS A&B SHEET 1/2 - VERSIONS A&B

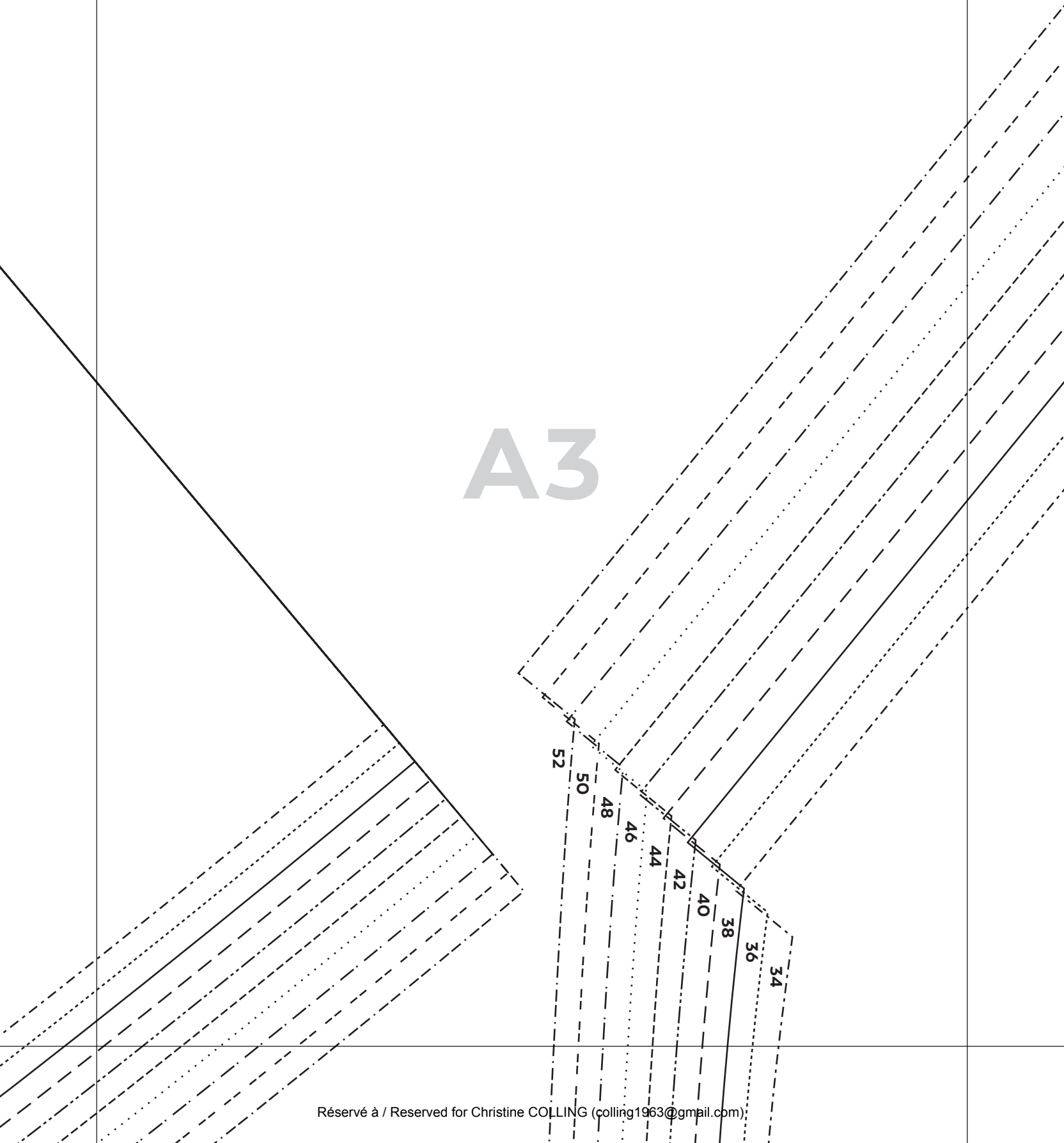
1

S A&B  
B

A2

 **DEER AND DOE**  
 Acqjou  
**3**  
**FOND DE POCHE**  
**POCKET FACING**  
 couper x2  
 cut x2

A3



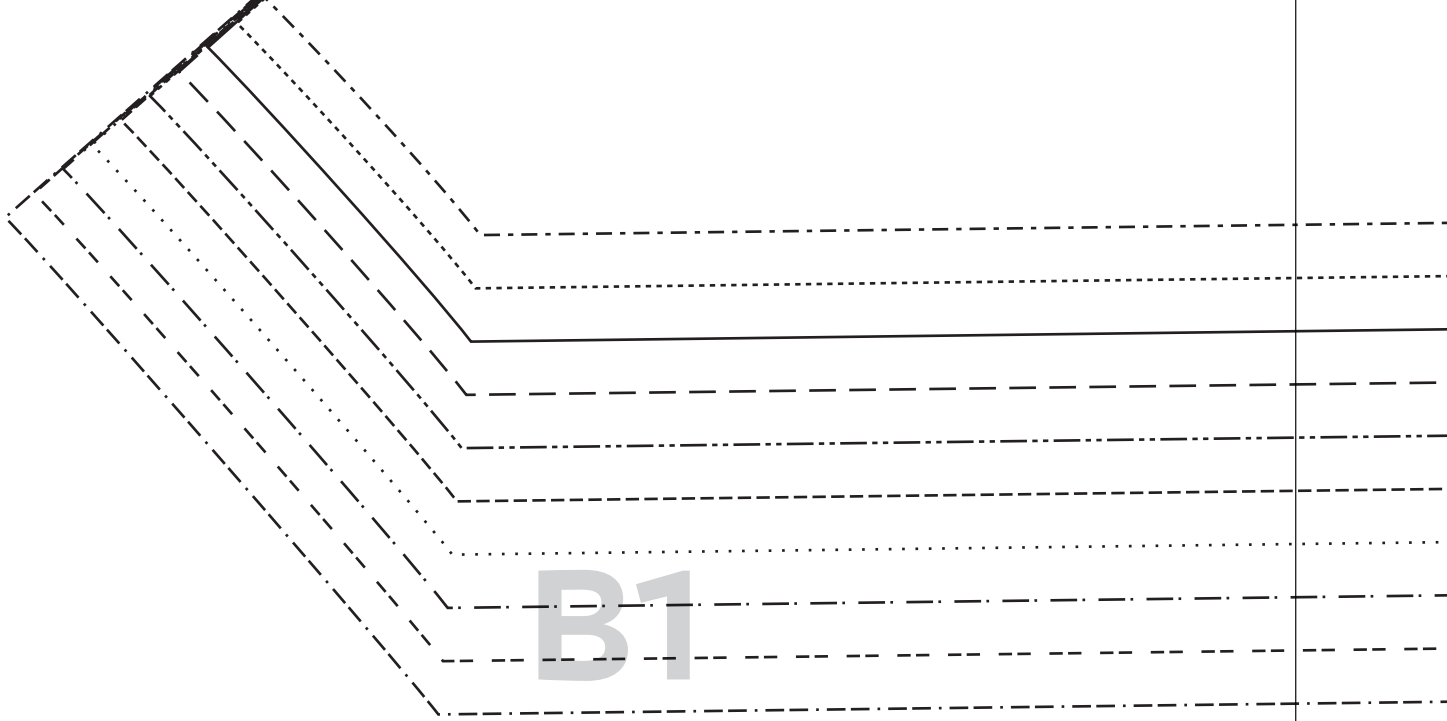
A4

A5

34  
36  
38  
40  
42  
44  
46  
48  
50  
52

34  
36  
38  
40  
42  
44  
46  
48  
50  
52

# SHEET 1/2 - VERSIONS A&B



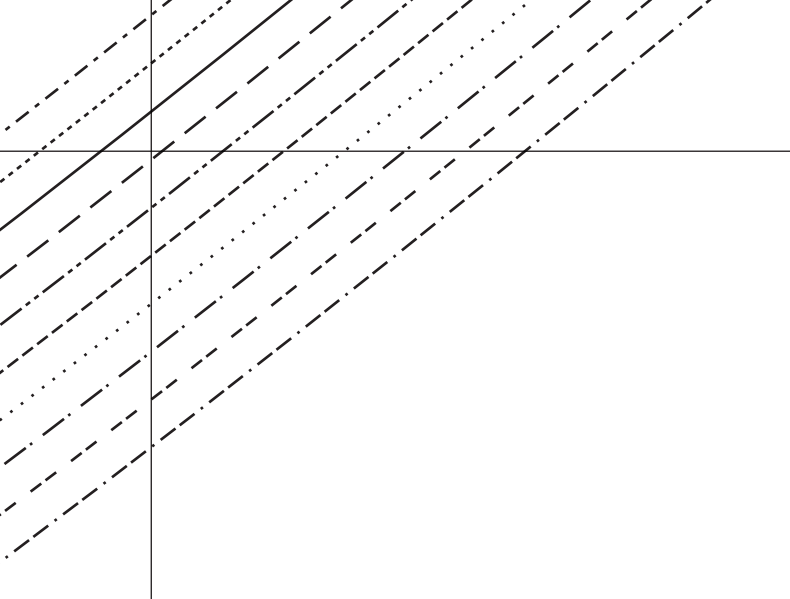
B1

B

DEER AND DOG  
Acjou  
FOND D  
POCK

34  
36  
38  
40  
42  
44  
46  
48  
50  
52

B2



B3

  
**DEER AND DOE**  
 Acajou  
**9**  
**SOUS-PATTE**  
**BRAGUETTE**  
**FLY SHIELD**  
 couper x1  
 cut x1



VERSION B

  
**DEER AND**  
 Acajou  
**2**  
**COTÉ DEV**  
**SIDE FRO**  
 couper x2  
 cut x2



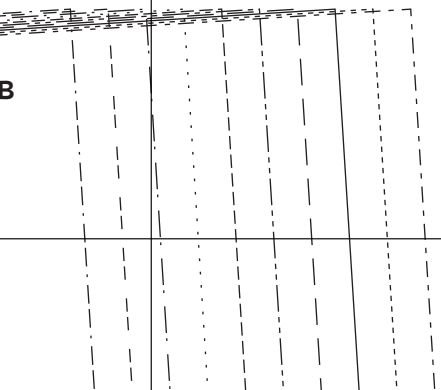
B4



**DEER AND DOE**  
Acajou

**2**  
**COTÉ DEVANT**  
**SIDE FRONT**

couper x2  
cut x2



- 34
- 36
- 38
- 40
- 42
- 44
- 46
- 48

B5



  
**DEER AND DOE**  
Acajou

**1**  
**MILIEU DEVANT**  
**CENTER FRONT**  
couper x2  
cut x2

C1

N/SHORTEN

/RACCOURCIR

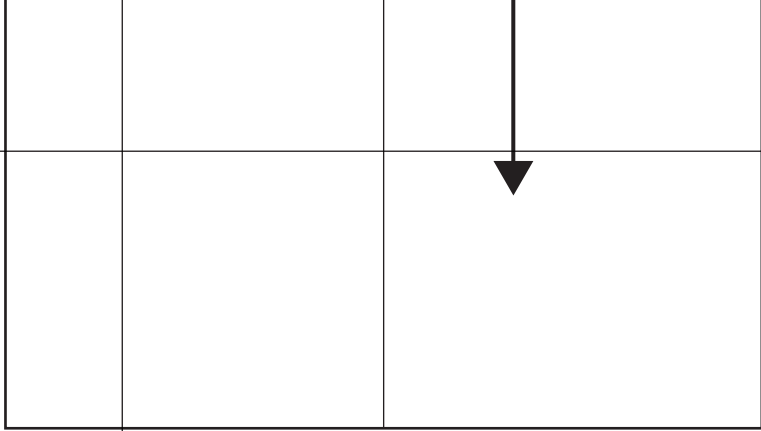


C2

LENGTHEN/SHORTEN

ALLONGER/RACCOURCIR





C3



C4

C5





D1

VERSION B



D2



D3



ALLONGER/RACCOURCIR

ALLONGER/RACCOURCIR

LENGTHEN/SHORTEN

LENGTHEN/SHORTEN

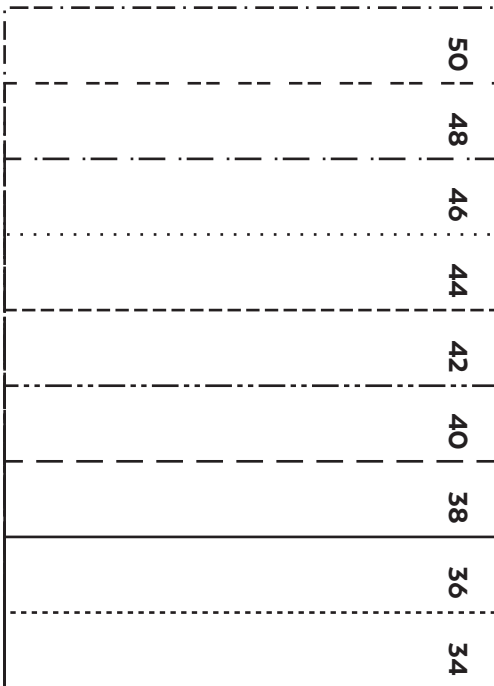
D4

LONGER/RACCOURCIR  
LENGTHEN/SHORTEN



D5

52 50 48 46 44 42 40 38 36 34



**DEER AND DOE**  
Acjou  
**10**  
**CEINTURE DEVANT**  
**FRONT WAISTBAND**  
couper x4 - thermocoller  
cut x4 - apply interfacing

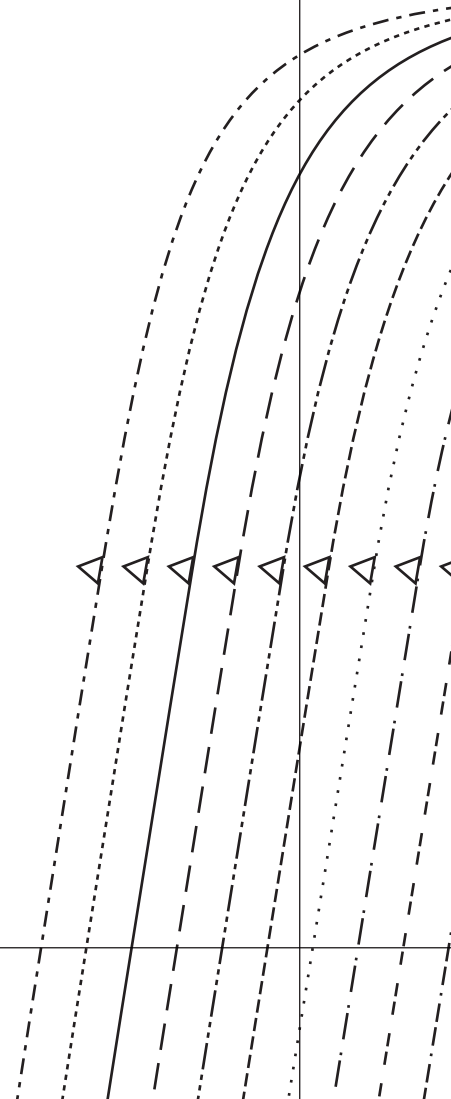
VERSION B

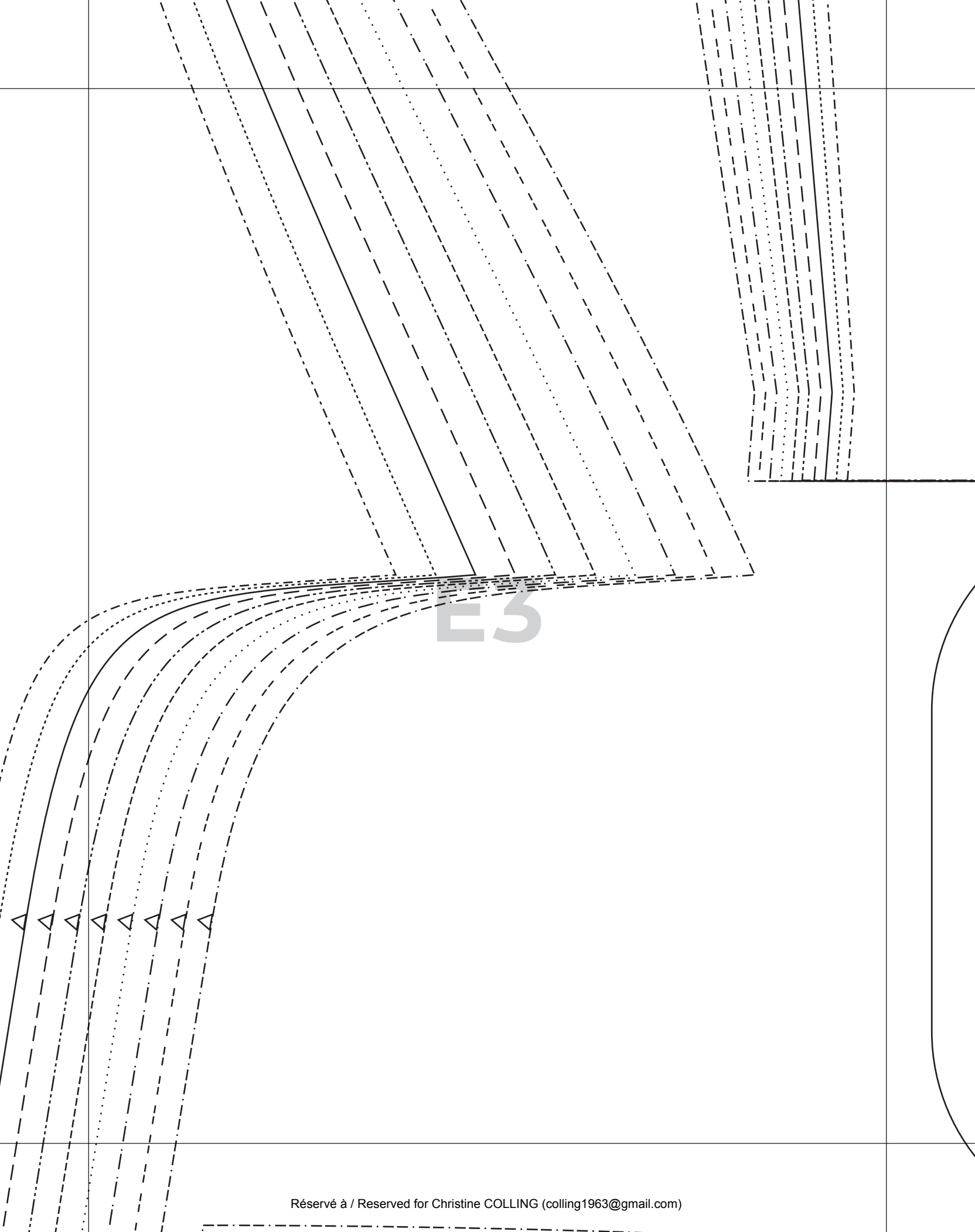
E1



DEER AND DOE  
Acqjou  
S  
DOS  
BACK  
couper x2  
cut x2

E2





E4

  
**DEER AND DOE**  
Acajou

**6**  
**POCHE ARRIÈRE**  
**BACK POCKET**  
couper x1  
cut x1





**AND**  
**DOE**  
ajou

**O**

**RE DEVANT**  
**MAISTBAND**

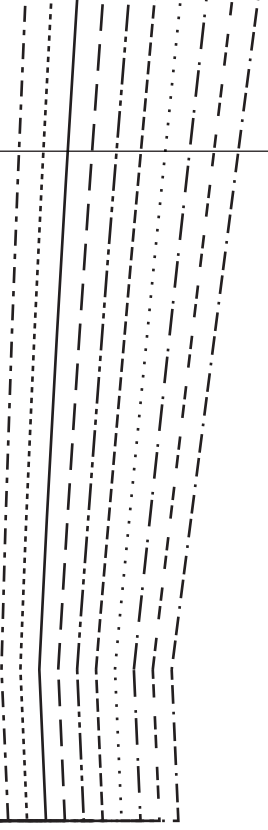
- thermocoller  
ply interfacing



**GAUCHE LEFT**

**DROITE RIGHT**

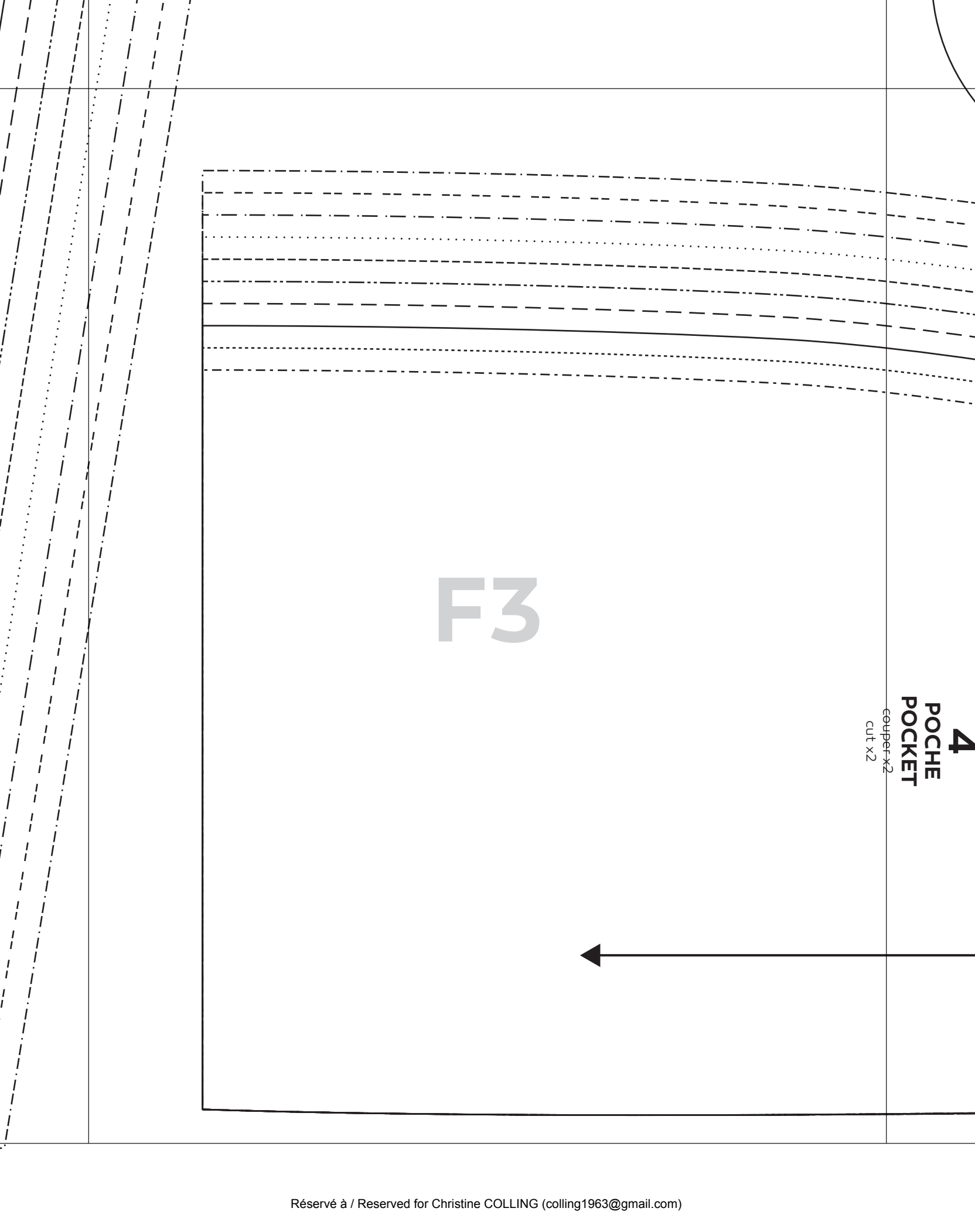
**E5**



F1

34  
36  
38  
40  
42  
44  
46  
48  
50  
52

F2



F3

4

POCHES  
POCKET

couper x2  
cut x2



F4

  
**DEER AND DOE**  
Action

**4**

**POCHE  
POCKET**

couper x2  
cut x2



**DEER AND DOE**

Acajou

**11**

**CEINTURE DOS  
BACK WAISTBAND**

couper x2 au pli  
cut x2 on fold

34 36 38 40 42 44 46 48 50 52

F5

