



Clown Cuddle Doll

Approx 38cm

Materials and Requirements:

Assorted felt colors

Small Scrap of Synthetic Fur, pile Length approx 40mm

Small scrap Knit fabric (Nose)

Cotton print fabric

Medium-weight Heat and Bond

Medium-weight fusible woven interfacing

1 x 45mm neck Joint

1 x pair of 10mm Safety Eyes

1 x 25mm Safety eye (Nose)

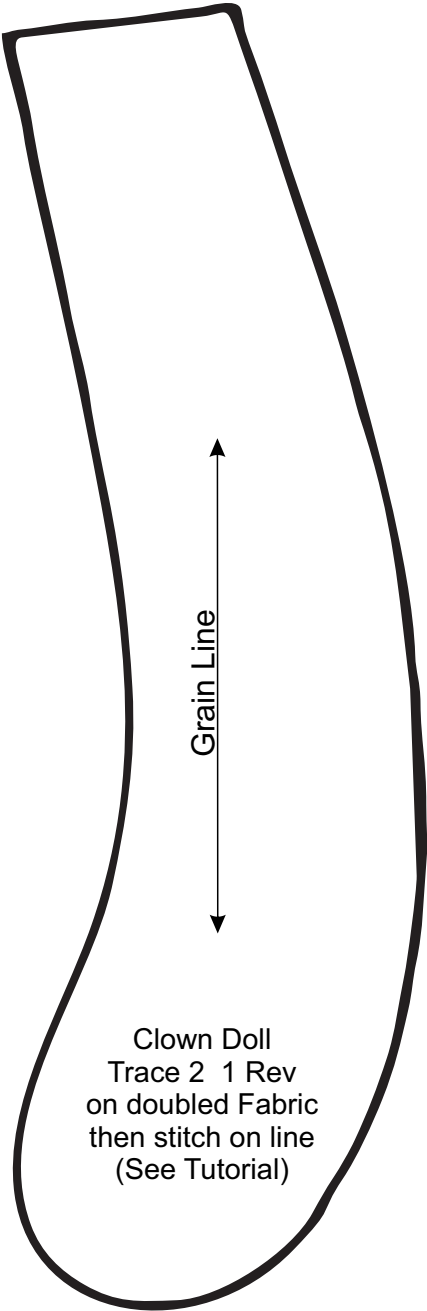
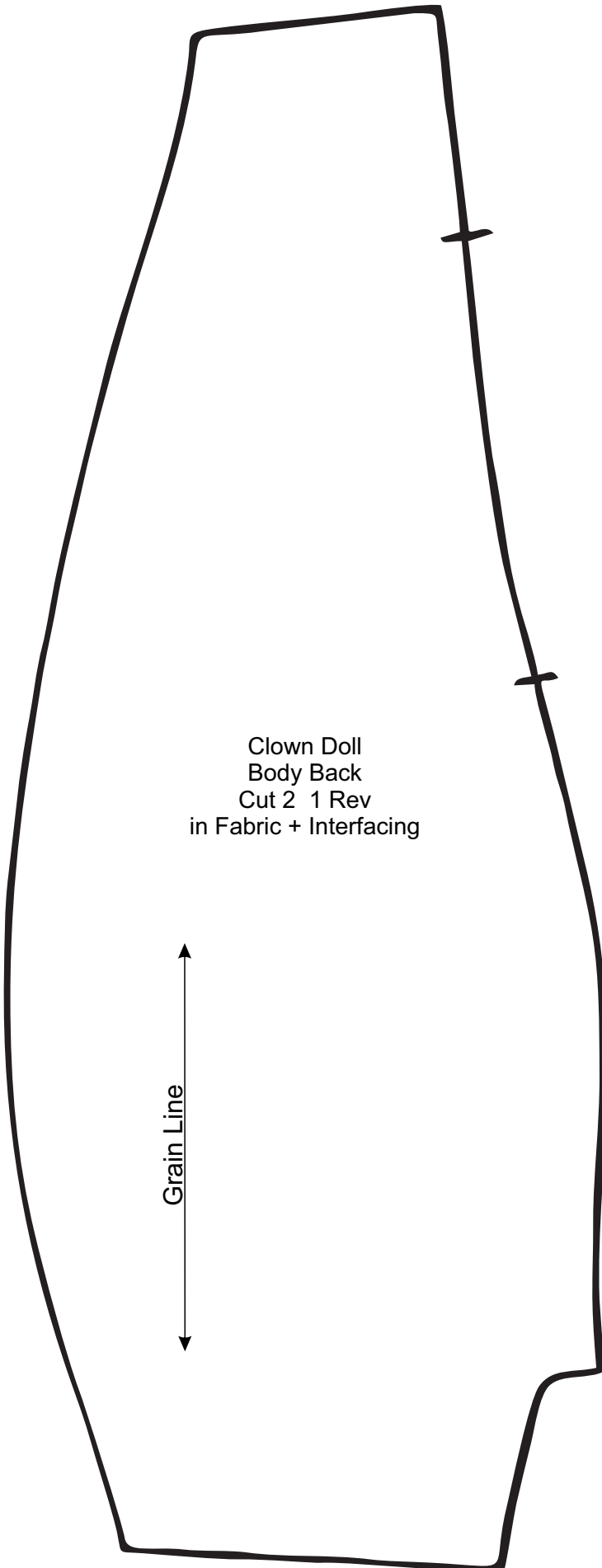
Buttons to suit

Embroidery threads to suit

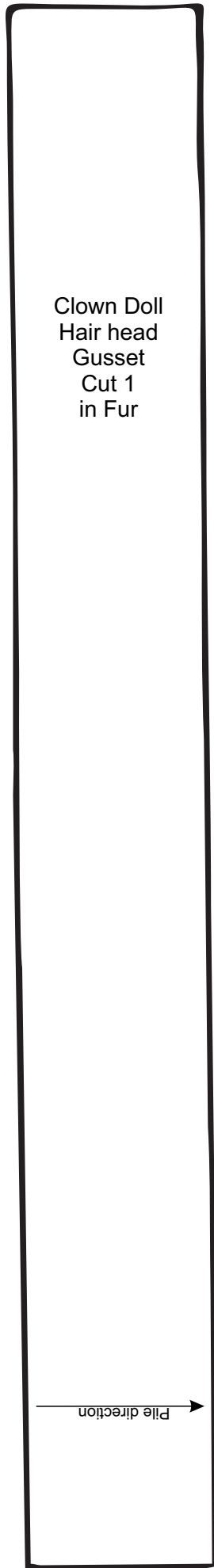
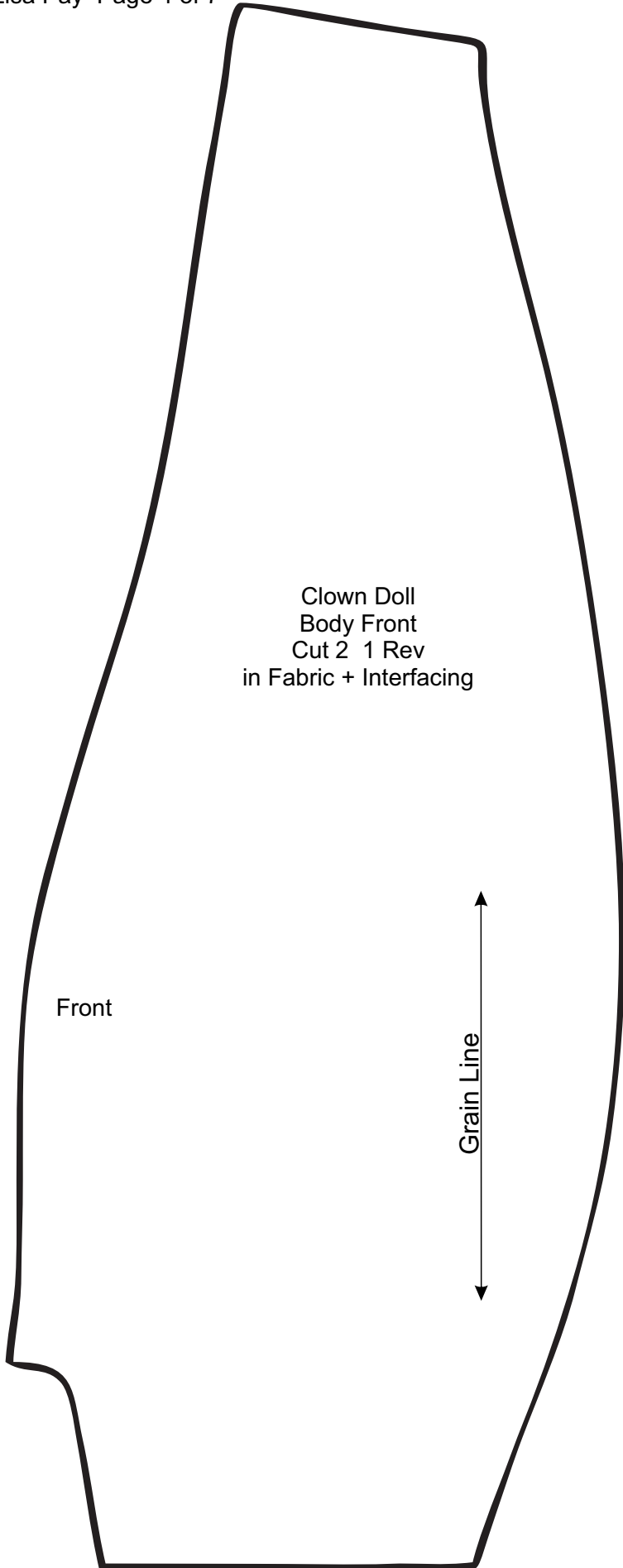
Extra strong thread

Polyester filling

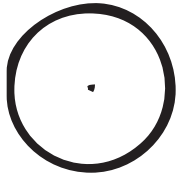
General sewing requirements



PRINT TEST - THIS LINE SHOULD MEASURE 4 INCHES OR 101.6MM



PRINT TEST - THIS LINE SHOULD MEASURE 4 INCHES OR 101.6MM



Clown Doll
Cheek
Cut 2
in Felt
+ Fusible Web



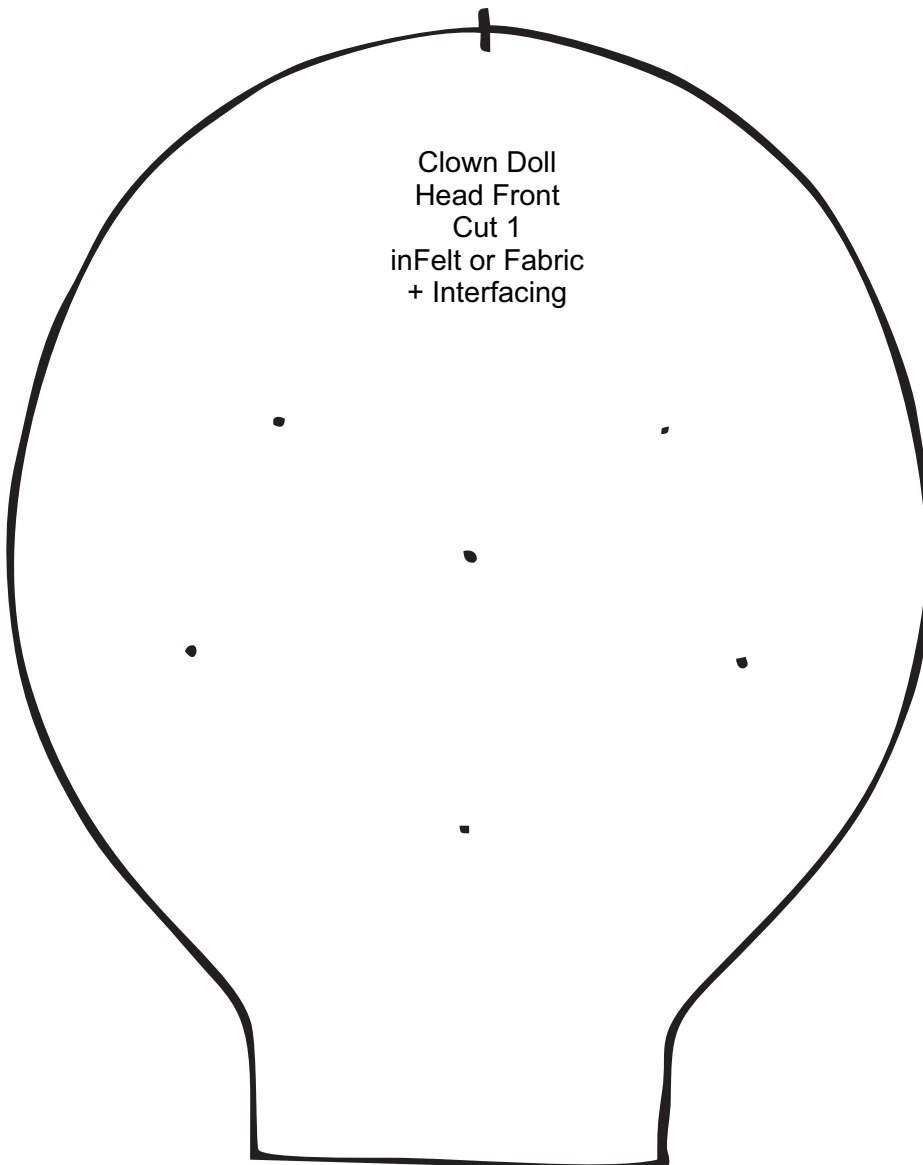
Clown Doll
Top Eye detail
Cut 2
in Felt
+ Fusible Web



Clown Doll
Foot Pad
Cut 2
in Felt
+ Interfacing

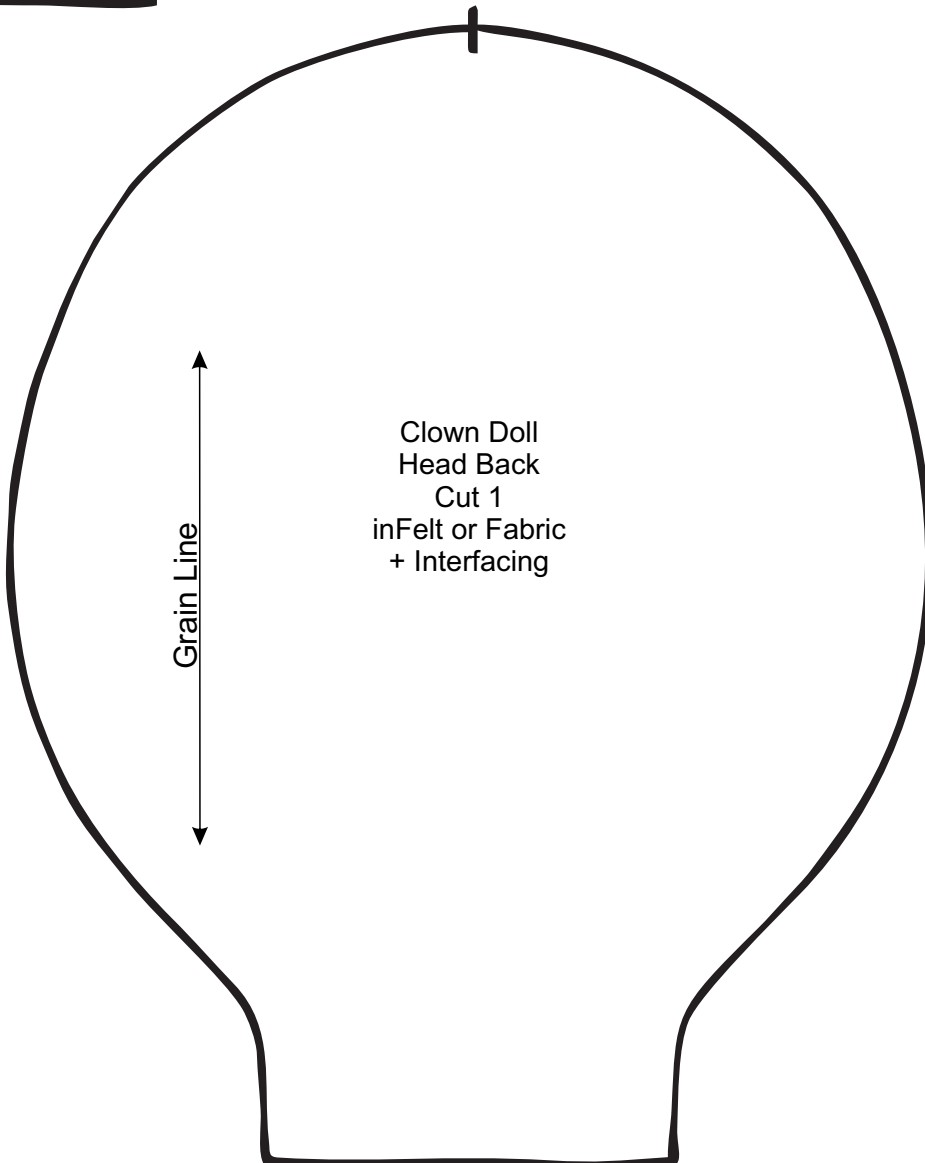
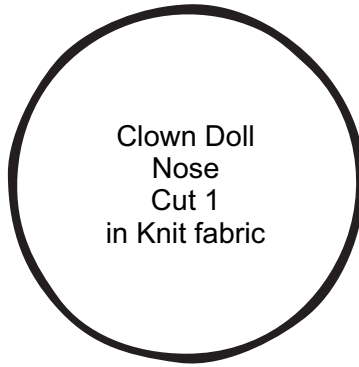
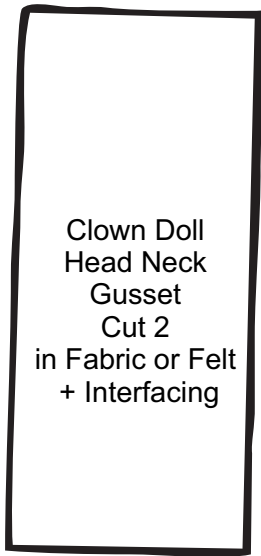


Clown Doll
Lower Eye detail
Cut 2
in Felt
+ Fusible Web

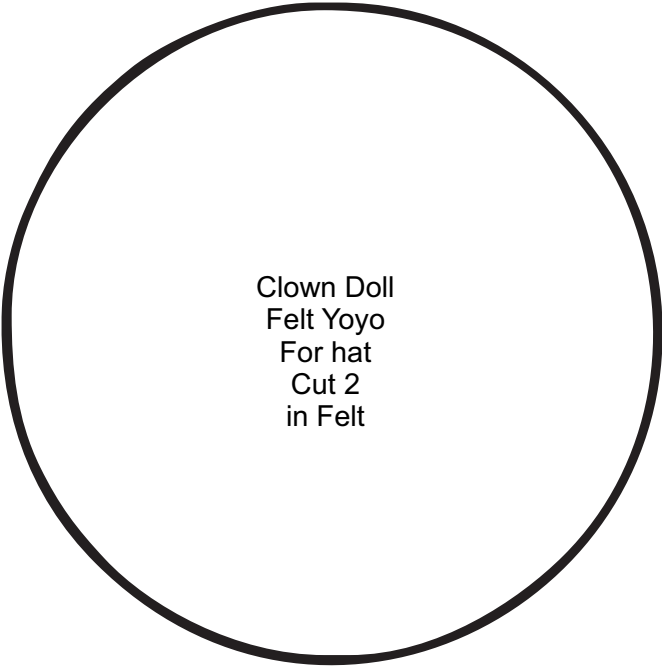
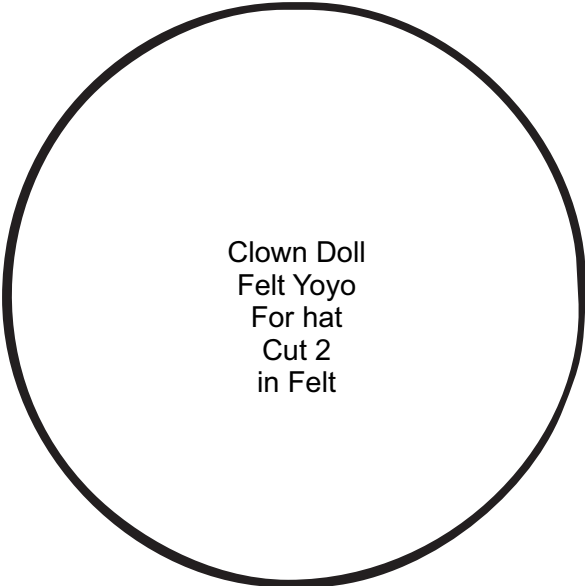


Clown Doll
Head Front
Cut 1
in Felt or Fabric
+ Interfacing

PRINT TEST - THIS LINE SHOULD MEASURE 4 INCHES OR 101.6MM



PRINT TEST - THIS LINE SHOULD MEASURE 4 INCHES OR 101.6MM



PRINT TEST - THIS LINE SHOULD MEASURE 4 INCHES OR 101.6MM