

“Cute As A Button” Annie

14” coffee stained fabric doll

Supplies:

muslin (doll body, pantaloons, dress bodice & scallop trim)
black button fabric (dress skirt, hair bow)
½” gathered off white eyelet
fiberfill
off white crochet thread
natural red wool – 3ply (hair)
acrylic paints by Delta Ceramcoat: red, light ivory, black
3” doll needle
black permanent marker
brown colored pencil
brushes: sponge brush, liner, stencil, #3 flat
hemostats (optional, but helpful) or tweezers
fine sandpaper
51 buttons (different colors but at least 3 white ones)
hot glue
instant coffee
paper dish, paper towels

Happy Heart Patterns



HHF- 235

“Cute As A Button” Annie

Happy Heart Patterns

29 Crater Avenue
Wharton, New Jersey 07885
(973) 366-3210
www.happyheartpatterns.com

© 2008

“Cute As A Button” Annie

Notes:

1. Read pattern through before starting.
2. Sewing Terms: RST – right sides together RSO – right side(s) out
3. Thank you for purchasing my pattern! You may sell the finished doll at craft shows, on your website, and on Ebay. On the internet, please give me credit for this design (I work hard to bring you pattern designs that are very unique!). Thank you again!

Directions for Annie:

1. **Head:** Cut 3 pieces of muslin 8”x 8”. Take one of the pieces and put it on your work area. Place and center the head pattern on the muslin square—trace around head and remove pattern. Now place the head pattern under the muslin, aligning the head pattern with your traced pattern. You will be able to see the facial features through the muslin—now trace the nose onto the muslin (with-in the head). Put pattern aside. Place the muslin piece with the nose tracing directly on top of another muslin square. Machine stitch around head $\frac{1}{4}$ ” out from traced line (through both pieces of muslin). Now you are going to machine sculpt the nose. Go ahead and machine stitch the nose on the traced line—use a 1.5 stitch and back stitch at the beginning and end of the nose to secure stitching. Trim excess threads on both sides. On the traced side cut a tiny slit in the nose (see pattern for placement). The slit is where you are going to stuff the nose. **Nose:** take bits of fiberfill and stuff the nose. Your hemostats can be a real help doing this. If you don’t have hemostats you can use tweezers This piece that you just completed will be the front of the head. Center the face with the stitched nose onto the last square piece of muslin—make sure the nose is right side down (and the open slit is facing up) – there is no need to sew up the slit because when you stuff the head, the nose stuffing will be kept in place – stretch out the muslin fabric (with the nose stitched face) so the outer edge is smooth and then pin in place to the last piece of muslin. Machine stitch all the way around the head again on the traced line, stitching the front sculpted nose/face to the back muslin square. Cut head out a scant $\frac{1}{4}$ ” from stitching the traced line. Remove pins. On the back of the head, cut a vertical slit (about 1” up from the bottom of the head – about $1\frac{1}{2}$ ” long)—cut through back only—this is where the neck will go later. Turn the head RSO through the slit opening. Stuff the head very firmly, paying attention to the outer edges of the face so there is no puckering. You can dampen the outside edge of the head before stuffing – this will help eliminate puckers. You don’t have to whip stitch the slit on the head closed.
2. **Stitching Body, Arms, and Legs:** Trace the body, two arms, and two legs onto doubled muslin. Machine stitch around entire body. Machine stitch around arms leaving top ends open. Machine stitch sides of legs (leaving tops and bottoms of legs open). Cut pieces out a scant $\frac{1}{4}$ ” away from stitched lines. Put arms and legs aside.
3. **Body:** Draw a vertical slit on the back of the body (see pattern for placement). Cut slit (just the one layer). Turn body RSO through slit opening. Firmly stuff the bottom of the body first, to give it some shape. Next, firmly stuff the tall neck area —finally stuff midsection of body. Whip stitch slit opening closed. You are going to “square off” the bottom of the body (so your doll can sit nicely if you want her to) – look at the body and see how the 2 bottom sides point down – rub one bottom corner between your fingers to remove the fiberfill from that area – pull this little (triangular) area onto the bottom of the body and hand stitch in place - repeat on other side. Put body aside.

“Cute As A Button” Annie

4. **Arms:** Clip seams on arms at elbows. Clip seams on hands at thumbs. Turn arms RSO through top ends. Firmly stuff hands and then rest of arms only up to elbow line – stuff rest of arms very lightly (if you stuff top of arms too much they won't lie nicely against body when they are attached to the body) - leave top 1” of arms without stuffing. Take a running stitch at the end of one arm – pull thread to gather end closed, tack and cut thread. Repeat process on other arm. Put arms aside.
5. **Legs:** The legs are still wrong side out. You are going to make the toe line for your feet. To make the toe line, match seam to seam at the end of one foot—position seams to opposite sides for less bulk—pin seam in place. Position toe line pattern at end of foot—about a ¼” away from the end. Trace toe line onto foot. Machine stitch toe line on traced line (be careful of pin). Remove pin. Cut around toe line 1/8” from stitching. Repeat steps above to trace and stitch toe line onto other foot. Turn legs RSO. Stuff feet and legs up to line indicated on pattern and then leave a little space (so knee can bend – if you sit her) – lightly stuff the next 2” of the legs, leaving the last 1 ½” of legs without stuffing. Match seams at top of legs and whip stitch tops closed.
6. **Attaching the Head to the Body:** Place the neck area of the body against the back slit of the head (right over and hiding the head opening)—position the head so a little of the neck shows. Use off white crochet thread and neatly and securely hand stitch the top neck area to the back of the head – turn doll over so front of doll faces you - you also want to hand stitch the “chin area” of the head to the front of the neck.
7. **Coffee Staining the Head and Body, Arms & Legs:** Mix 1/4 cup of instant coffee with 1/2 cup of hot water to make a coffee stain. Use the sponge brush and paint the head and body, the arms and the legs with the coffee stain. Let dry naturally or oven dry. To oven dry: place all the pieces on a foil lined cookie sheet and place them in a low temperature oven (200 degrees) for 10 minutes, turning several times through drying time for even staining. Please don't leave oven unattended! Save coffee stain for later.
8. **Painting the Nose, Cheeks and Eyes on Annie:** **Nose:** Use the liner brush and paint the sculpted nose red – don't use water with the paint - too wet paint can seep into the coffee stain. Using the red paint without water will also give you more of a “dry brushed” effect. Let nose dry. Lightly sand nose. **Cheeks:** Squeeze a little red paint onto a paper dish. Dip stencil brush into red paint and wipe brush several times on a paper towel removing almost all the paint. This will allow you to “dry brush”. Dry brush cheek areas of face. **Eyes:** Trace the eye patterns onto the face using the permanent black marker. Use the liner brush and paint the eyes light ivory, painting within the tracing. Let dry. Draw eyes (irises) in eyes. Paint irises black. Make a mix of black paint and light ivory paint to make a grey color. Paint this grey color in the middle of the eyes – while the grey paint is still wet, take the liner brush and paint little lines out (radiating out) from the center of the eyes (all around) – let dry. Paint little black pupils in the eyes. Dip the end of the liner brush into light ivory paint and “dot” 2 highlights in each eye. Let dry. Outline the eyes again with the permanent black marker.
9. **Stitching Annie's Eyebrows, Lashes and Mouth:** Use a sharp pencil and draw the eyebrows, eyelashes and mouth onto the face. Double thread a long piece of regular black thread in 3” doll needle and knot end. Poke needle into top of head and come out at one eyebrow – stitch eyebrow –

“Cute As A Button” Annie

exit needle to one eyelash – stitch all 3 eyelashes and exit needle to mouth – stitch both mouth lines – exit needle up to other eyelashes and stitch them – exit needle up to other eyebrow and stitch that eyebrow – exit needle to top of head, tack and cut thread.

10. **Shading Annie’s Face:** Use the brown colored pencil and shade around Annie’s eyes and nose.
11. **Painting the Shoes and Socks on the Legs:** Draw the shoe lines (and straps) onto the feet using a regular pencil. Use the flat brush and paint the shoes black (use the liner brush for the straps) – let dry. Draw the sock lines onto the legs. Paint socks light ivory – let dry. Lightly sand socks and shoes with the sandpaper. Wipe any dust off with a paper towel.
12. **Stitching Legs to Body:** Hand stitch the tops of the legs across entire bottom of body.
13. **Attaching Arms to Body:** Thread a long piece of off white crochet thread in 3” doll needle – tie a big knot 6” from end. Stitch from one top side of body (through body) to opposite top side of body—now take a stitch through top of arm (inside to outside), poke needle back through top of arm (outside to inside)—stitch back into body (where thread exits) through body and out to opposite side (where you first started)—pull thread tightly (pulling arm close to body) and tie threads together to secure arm to body. Insert needle through top of other arm (inside to outside), stitch back through top of arm (outside to inside)— pull threads tightly to pull arm close to body, knot threads together to secure other arm to body (hiding knot under arm) and trim threads.
14. **Pantaloons:** Cut or tear two pieces of muslin fabric 4 ½” x 7 ½”. Place pieces RST—fold over matching 4 ½” sides—measure up fold 1 ½” and cut fold to 1 ½” mark to make leg separation. Machine stitch sides of pantaloons and around leg separation. Clip seam at top of leg separation (both sides). Turn pantaloons RSO and finger press flat. Use off white crochet thread and hand stitch around waist of loons, leaving thread tails at center back (to gather later). Put pantaloons aside.
15. **Dress:** Cut 2 bodice patterns on fold of muslin fabric. Place the two bodice pieces RST and machine stitch across the top of both sleeves (a scant ¼” seam). Cut or tear 2 pieces of black button fabric 4 ¼” x 11 ¾” to make the skirt pieces. You will make the scalloped bottom for the skirts next. Trace 2 scalloped patterns onto doubled muslin fabric. Machine stitch around scalloped edge using a small stitch (also being sure to stitch 2 or 3 tiny stitches between scallops). Cut scalloped pieces out 1/16” away from scallops. Carefully clip seam between scallops. Turn scalloped pieces RSO and finger press flat (or iron flat). With RST, stitch a scalloped trim to each bottom side of the skirts – press seam up). Take a running stitch along the top 11 ¾” side of each skirt piece – pull on threads to gather skirts to 5” (so they will fit bottom sides of bodice). Match the gathered side of each skirt to the bottom sides of bodice RST. Machine stitch skirts to bodice. With RST, match up sleeves and sides of dress. Machine stitch under one sleeve and down one side of dress. Repeat on other side. Clip seams at underarms. Remove any excess threads on dress. Turn dress RSO. Fold neck in ¼” - take a running stitch around neck (use off white crochet thread) leaving thread tails at middle back. Fold sleeves up ½” – take a running stitch around ends of sleeves using off white crochet thread.

“Cute As A Button” Annie

16. **Coffee Staining:** At this time cut 2 pieces of eyelet trim 4” each (this will go at the top of the socks). Now you will need the coffee stain again. Wet dress and pantaloons completely with water—sprinkle them with coffee stain (just concentrate on the bodice of the dress and the scalloped trim of the dress, not the black skirt so much) - crumple them up into balls—open them up again leaving in the wrinkles. Use the sponge brush and paint the 4” eyelet trim pieces with coffee water. To dry: place all pieces on a foil lined cookie sheet and place them in a low temperature oven (200 degrees) for 10 minutes, turning once halfway through drying time. Please don’t leave oven unattended!
17. Put pantaloons on doll, thread tails to back. Pull on thread tails to gather waist of pantaloons around doll’s waist – knot thread tails together and trim. Hot glue waist of pantaloons to body in a few spots to secure them in place.
18. Pick out 16 different colored vintage buttons. Pin a button onto each scallop at the bottom of the dress with a pleasing colorful placement. Neatly hand stitch the buttons in place (removing pins) using off white crochet thread.
19. Put the dress on your doll – slip her legs through the neck of the dress (you might have to squeeze her lower body in just a bit to get dress to come up around the top of her body) – slip one arm (squeeze hand) through one sleeve and then slip other arm through other sleeve and then pull dress up into place around her neck. Pull thread tails at neck of dress to gather top of dress around doll’s neck –tie thread tails together and trim. Note: If you find it too difficult to get the dress on Annie, cut a slit down the bodice back of the dress (to the gathered skirt) right between the 2 thread tails at the back of the neck – this will allow the dress to more easily slip on - then overlap sides of opened back and stitch or hot glue together.
20. **Hair:** The hair is made from natural red wool. Cut 3 pieces 8” long. Place them (side by side) over the head and tack them to each side of the head using red thread. Unravel the ends of the wool up to the tacking. Bangs: Cut 3 pieces of wool 2 ½” long and unravel them. Tie them together in the middle with red thread. Tack the bangs to the top middle of the forehead.
21. **Annie’s Hair Bow:** Cut or tear a 2 ½” x 5” piece of black button fabric. Take a running stitch through the middle – pull on thread to gather middle of bow and tack to secure gathering. Use black thread and stitch a white button to the middle of the bow. Hot glue bow to top of Annie’s head.
22. **Annie’s Button Necklace:** You will need about 32 buttons for Annie’s necklace. Cut a 1 yard length of off white crochet thread. Thread needle and make a big knot 6” before end of thread. You are going to thread buttons onto the crochet thread. If your buttons have 2 holes, that’s easy. If your buttons have 4 holes, go through holes on a diagonal so thread is centered on button (see diagram 1 on pattern page). **Start:** Insert needle into back of button coming out of 1st hole – go down through other button hole. Hold 2nd button wrong (or back) side up. Poke needle down through 1st hole – come up through other hole. Hold 3rd button right side up – bring needle up through 1st hole – go down through the other hole. Continue adding buttons in the same manner (see diagram 2) until you have at least an 8 ½” length of buttons, then knot thread off leaving a 6” thread tail. Place button necklace around Annie’s neck and tie (knot) thread tails together and trim.

“Cute As A Button” Annie

23. **Annie’s Shoes:** Hand stitch or hot glue a white button to each shoe strap (on the outside of the strap). Hot glue a piece of eyelet trim around the tops of the socks (ends butting up together in back).
24. **Hanger:** Make a hanger for Annie if you want. Here’s how: thread an 18” piece of off white crochet thread in 3” doll needle. Take a big stitch across the middle back of the head – pull needle off thread and even up thread ends. Tie thread ends into an overhand knot and trim excess thread above knot.

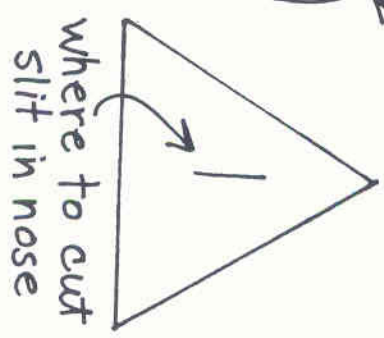
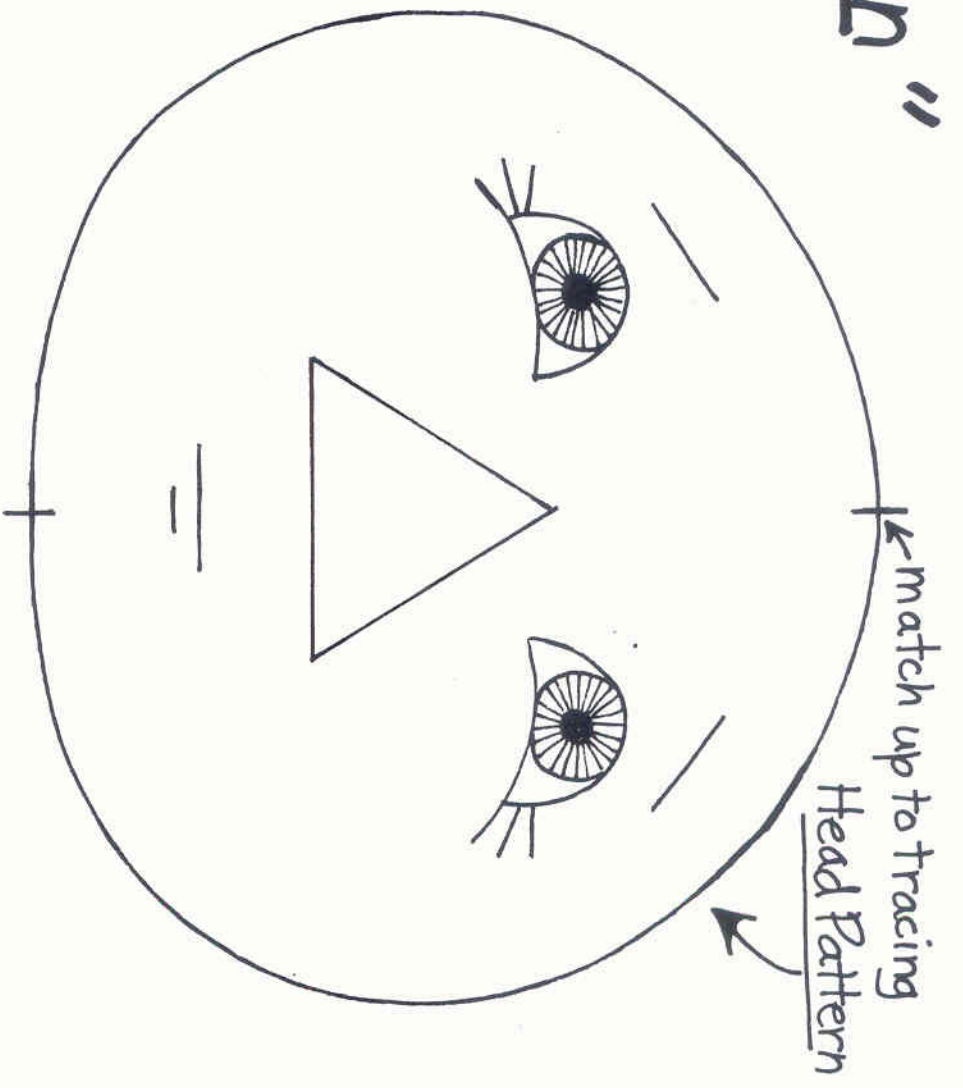
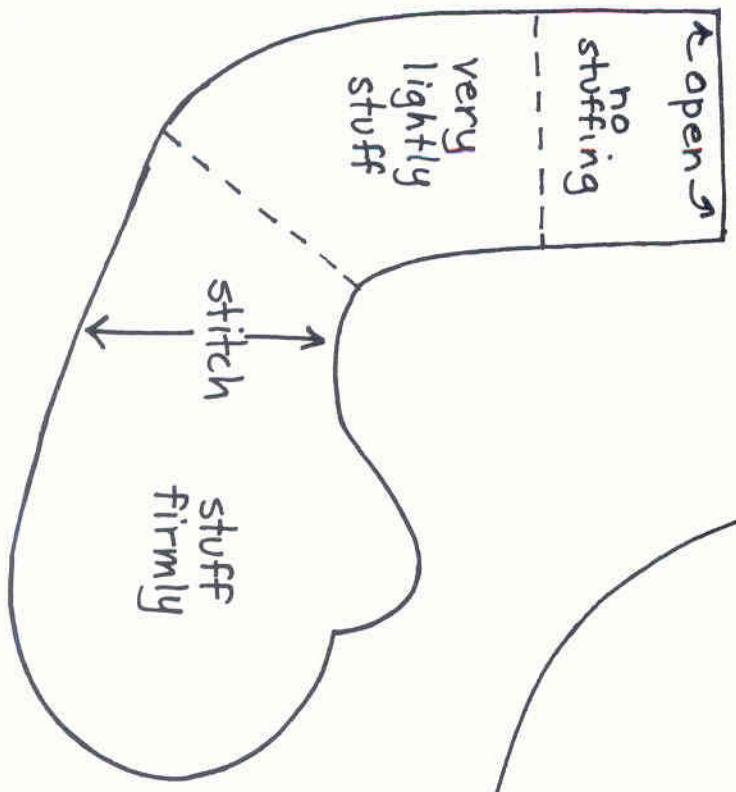
This company cannot be responsible for printing error, human error or individual workmanship. All designs and photos are protected by copyright and may not be reproduced for commercial use (including enlargements or reductions) without prior written permission.

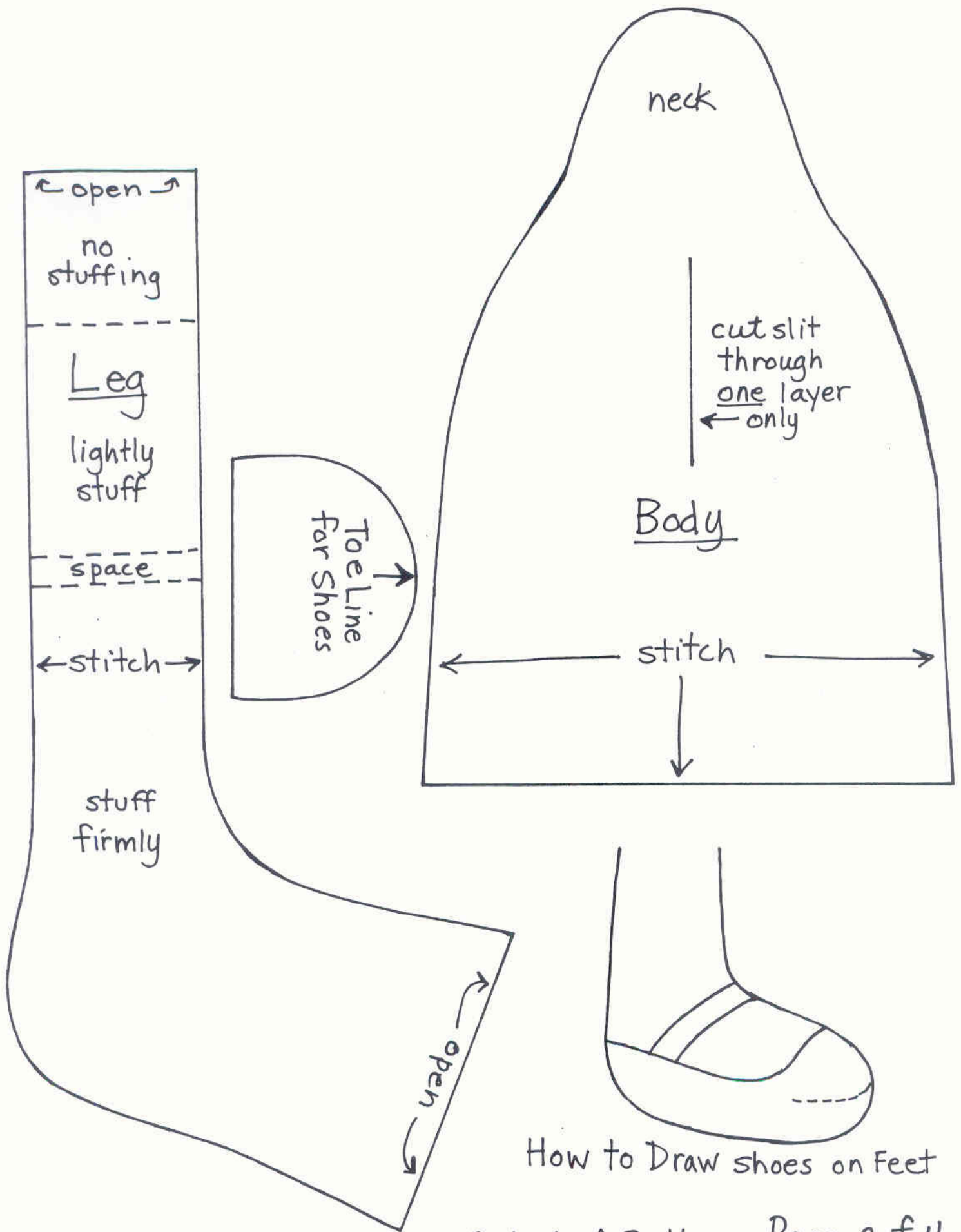
"Cute As A Button"

Annie

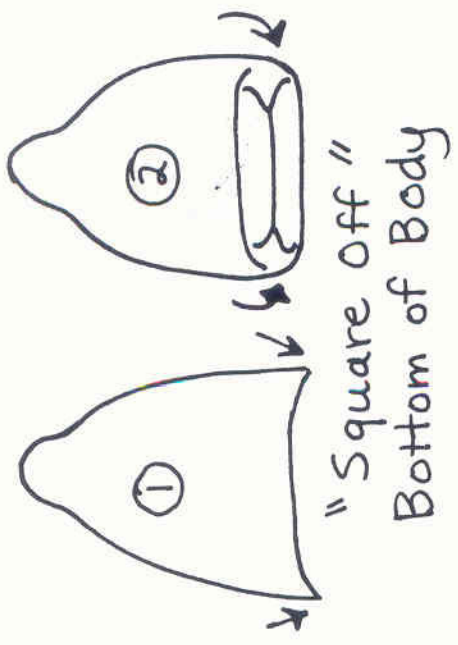
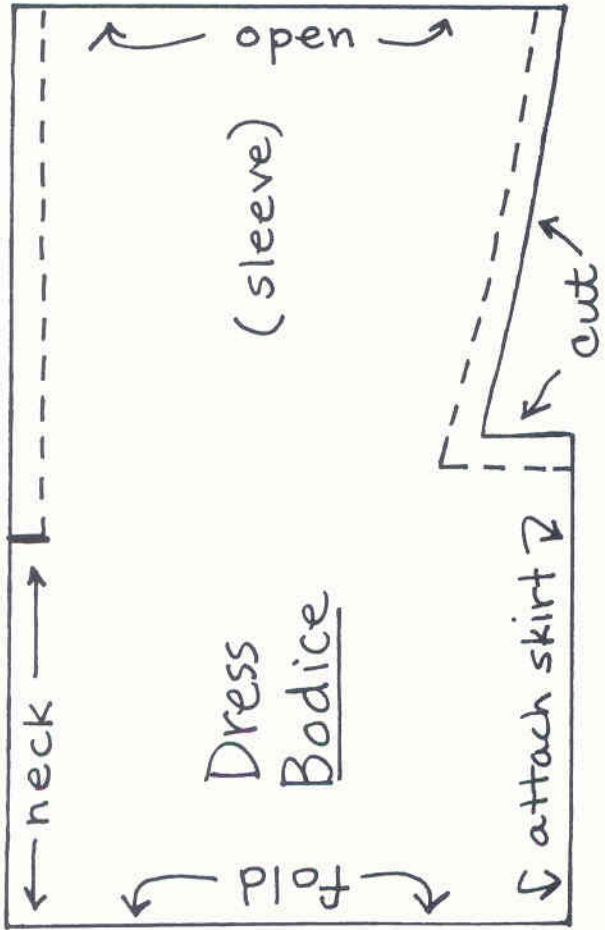
HHF - 235

© 2008
V. Lettorale





How to Draw shoes on Feet



How to Stitch Button Necklace

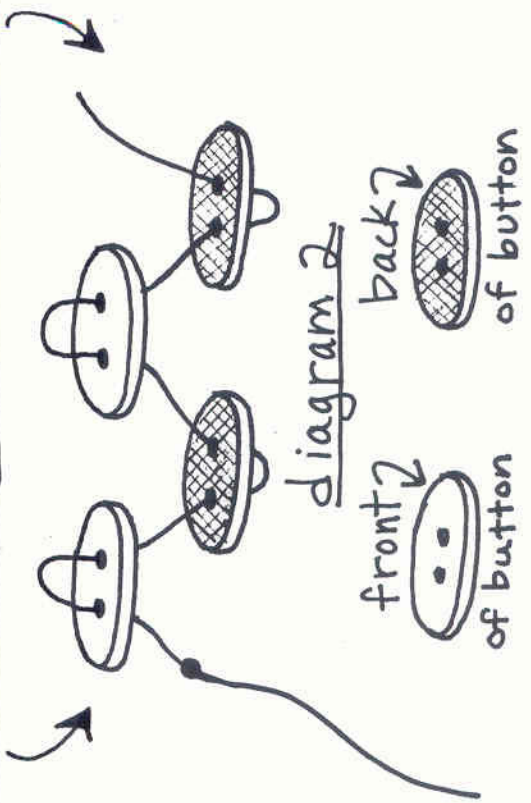
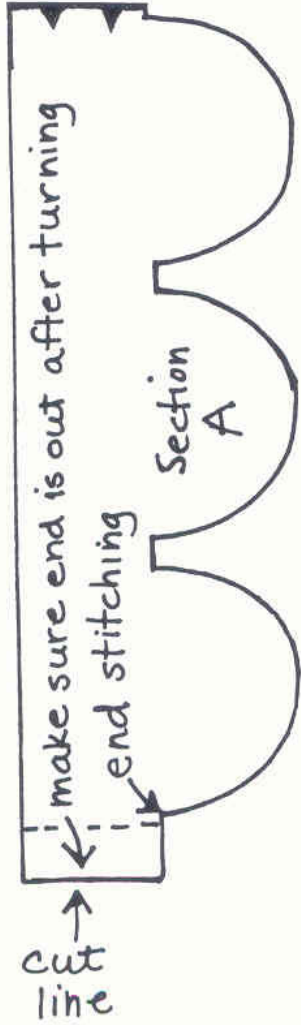


Diagram 1

Scalloped Trim for Dress - Section A



Scalloped Trim:

Tape Section A to

Section B

matching notches

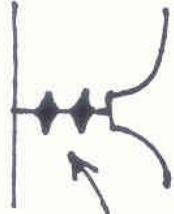
to complete

length of

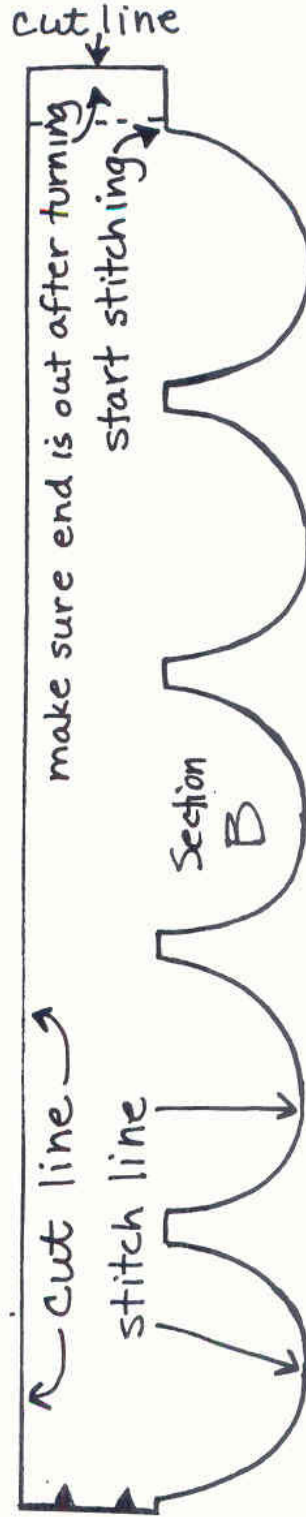
scallop trim

before placing

on muslin



Scalloped Trim for Dress - Section B



Cute As A Button

Page 4 of 4