



Audrey shawl

By Christelle Bagea



Skill Level

Knitting: intermediate – Crochet: beginner (basic crochet notion are required for the bind off)

Material

US5 / 3,75mm circular needle with 40" cable
US4/ 3,50mm crochet hook
2 stitch markers, tapestry needle to weave in ends

Yarn

The pattern calls for fingering weight yarn

MC: MollyGirl Yarn / Diva / "Like a Bat out of Hell" (100g / 395m/435yds, 75% superwash Merino, 20% Nylon, 5% stellina)

CC1: Stunning String Studio / Twinkle / « Cherry Blossom » (100g / 398m/437yds, 75% superwash Merino, 20% Nylon, 5% stellina)

CC2: Nina's Hand Dyed Yarns / Sorion / "Wild Petunia" (100g / 400m/440yds, 65% extrafine merino, 35% silk)

CC3: Tosh Merino Light Unicorn Tail / « Coquette » (14g / 47m/52yds, 100% superwash merino wool)

CC4: The Plucky Knitter / Plucky Feet / "Think Pink" (115g / 389m/427 yds, 90% merino, 10% nylon)

CC5: Tosh Merino Light Unicorn Tail / Pop Rocks (14g / 47m/52yds, 100% superwash merino wool)

CC6: Tosh Merino Light Unicorn Tail / Torchere (14g / 47m/52yds, 100% superwash merino wool)



Audrey shawl

By Christelle Bagea

CC7: Stunning String Studio / Stunning Superwash/ « Lipstick red» (100g / 434m/474yds, 100% merino)

CC8: Nina's Hand Dyed Yarns / Gentle Spirit / "Raspberry Lips" (100g / 395m/434yds 80% extrafine merino, 20% bamboo)

CC9: Tosh Merino Light Unicorn Tail / "Tart" (14g / 47m/52yds, 100% superwash merino wool)

Yardage

I used the following metrage/yardage for my Audrey:

Meters: MC 368m / CC1 15m / CC2 18m / CC3 20m / CC4 22m / CC5 24m / CC6 37m / CC7 40m / CC8 43m / CC9 45m / **Total CC 264m / Total shawl 632m**

Yardage: MC 404yds / CC1 16yds / CC2 20yds / CC3 22yds / CC4 24yds / CC5 26yds / CC6 41yds / CC7 44yds / CC8 47yds / CC9 49yds / **Total CC 290yds / Total shawl 695yds**

Gauge

21st x 30 rows for 4"/10cm in blocked stockinette stitch

Gauge is important for this project as it affects yardage. I had close to nothing left on CC9 (2m/3yds). Please take time to check gauge, especially if you're in doubt over yardage or if you wish to go up a needle size.

Finished size

49in/125cm x 25in/64cm – please refer to the schematic.

Key of abbreviations

MC	Main color
CC	Contrasting color
St	Stitch
R	Row
CO	Cast-on
RS	Right side
WS	Wrong side
pm	Place marker
slm	Slide markert
kfb	Knit front and back
yo	Yarn over
k2tog	Knit two together
ssk	Slip, slip, knit

Key of symbols – see charts pages 8 and 9.

Definition of stitches

Source: [Craft Yarn Council Learning Center](http://www.craftyarn.com/learning-center)

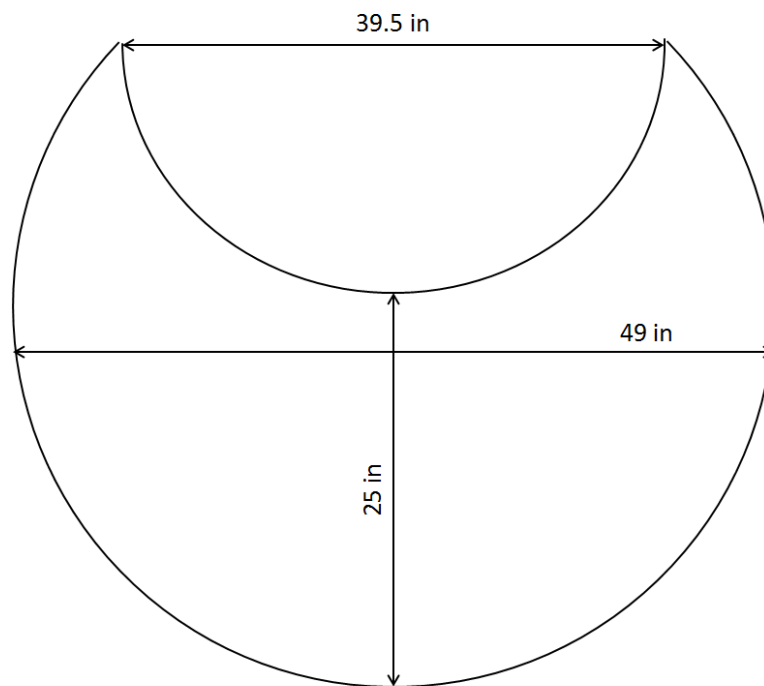
- **Kfb** = Insert needle into the front of the stitch. Knit the stitch but do not remove from left needle. Insert right needle into back of the same stitch and knit again. Remove the stitch from left needle.
- **K2tog** = To knit 2 stitches together, just insert the right needle into two stitches at the same time and knit. This will result in a decrease of one stitch. This decrease will slant to the right.
- **Ssk** = slip the first stitch as if to knit then slip the next stitch as if to knit. Insert the left needle into the front of both slipped stitches and knit them together. This decrease slants to the left.



Audrey shawl

By Christelle Bagea

Schematic and measurements





Audrey shawl

By Christelle Bagea

Construction instructions – please read carefully

Please read through the whole pattern before casting on.

The shawl starts with a garter tab cast on. There are 3 set-up rows prior to knit the shawl body, which is composed of two sections: circular stripes section and wavy stripes section. There are two final rows prior to bind-off which is made with a crochet hook. I numbered the sections to help you follow the pattern.

This pattern has been thoroughly reviewed and tested with care. However, should you encounter an error, do not hesitate to send me a private message on Ravelry. My ID is Christelleb78.

Important construction notes:

- Each row begins and ends with 3 knit stitches.
- The number of stitches mentioned at the end of each RS row is the number of stitches between markers (border stitches not included).
- The instructions are written to knit a shawl with one MC and 9 CC. If you wish to change the number of CC, please make sure to check yardage and do not necessarily cut CC at the end of each stripes, you may carry the CC along the edge.

Terms of use / copyright

You may knit as many shawls as you wish from this pattern. It is a free pattern but there are restrictions of use: you may not sell this pattern or items knitted from this pattern. You may share this pattern freely but make sure to always link to the source. All pictures are my own.





Audrey shawl

By Christelle Bagea

Instructions

1. Garter tab CO

With MC, CO 3 stitches, knit 6 rows.

Turn your work clock-wise, pick-up and knit 3 stitches on the long side (1 in each bump) and pick-up and knit 3 stitches in the border. 9 stitches.

A great tutorial on garter tab CO can be found [here](#).

2. Set-up rows

In this section only, instructions include border stitches.

R1 (WS) = Continuing with MC, k3, pm, p3, pm, k3

R2 (RS, increase row #1) = k3, slm, yo, k1, kfb, kfb, yo, slm, k3 – 13 stitches, 7 stitches between markers.

R3 (WS) = k3, slm, purl until next m, slm, k3. Do not break MC at the end of the row.

3. Shawl body part one: circular stripes

Circular stripes section is worked across row 4 to 99.

Remember:

- All rows begin with k3 and end with k3.
- MC will be carried along the edge throughout the circular stripe section, do not break it.
- In order to minimize finishing time, it is a good idea to weave your ends as you go but do not trim your ends yet, wait until after blocking.

Work the circular stripes pattern below following the order of the chart on page 6.

Circular stripes patterns

MC stripe

Worked over 6 rows

R1= yo, k until marker, yo – 2 stitches increased

R2= purl

Repeat R1 and R2 two more times, 3 times in total (6 stitches increased). Do not break MC at the end of MC stripe.

CC increase stripe

Worked over 4 rows

R1 (RS) = With CC, yo, k until marker, yo – 2 stitches increased

R2 (WS) = knit

R3 (RS, increase row) = *yo, k1, repeat from * until end of row, yo – number of stitches between markers doubled + 1

R4 (WS) = knit. Break CC

CC stripe

Worked over 4 rows

R1 (RS) = With CC, yo, k until marker, yo – 2 stitches increased

R2 (WS) = knit

R3 (RS) = *yo, k2tog, repeat from * to last st, yo, k1, yo – 2 stitches increased

R4 (WS) = knit. Break CC



Audrey shawl

By Christelle Bagea

Rows	Color	Circular stripe pattern	Stitch count between markers (on last row of stripe pattern)
R4-R7	CC1	CC increase stripe	19
R8-13	MC	MC stripe	25
R14-17	CC2	CC increase stripe	55
R18-23	MC	MC stripe	61
R24-27	CC3	CC stripe	65
R28-33	MC	MC stripe	71
R34-37	CC4	CC increase stripe	147
R38-43	MC	MC stripe	153
R44-47	CC5	CC stripe	157
R48-53	MC	MC stripe	163
R54-57	CC6	CC stripe	167
R58-63	MC	MC stripe	173
R64-67	CC7	CC stripe	177
R68-73	MC	MC stripe	183
R74-77	CC8	CC stripe	187
R78-83	MC	MC stripe	193
R84-87	CC9	CC increase stripe	391
R88-101	MC	Work MC stripe two times + row 1&2 once more	405

4. Shawl body part two: wavy stripes

Wavy stripes section is worked across row 102 to 151.

Work wavy stripes charts 1, 2 and 3 following the color order indicated in the table below.

Remember:

- All rows begin with k3 and end with k3
- All WS rows are purled
- Again, MC will be carried along the edge throughout the wavy stripe section, do not break it unless specified
- All CC colors are to be broken when the stripe is completed
- Weave your ends in as you go!



Audrey shawl

By Christelle Bagea

Rows	Chart	Color	Stitch count between markers (on last row of stripe pattern)
R102-109	1	MC	413
R110-113		CC9	417
R114-117		MC	421
R118-121		CC8	425
R122-125	2	MC	429
R126-129		CC7	433
R130-133		MC	437
R134-137		CC6	441
R138-141		MC – break MC	445
R142-143	3	CC5	447
R144-145		CC4	449
R146-147		CC3	451
R148-149		CC2	453
R150-151		CC1	455

5. Final section

With MC

R152 (RS): yo, knit until m, yo – 457sts

R153 (WS): knit. Do not break MC

6. Crochet bind off (optional)

With MC make a loop on your crochet hook and do a single crochet in the three border stitches of the shawl. Chain 7 and follow the crochet BO chart to bind off all stitches, always chaining 7 between each group of stitches. Finish with the three stitches of the border and close. A tutorial on the crochet bind-off can be found [here](#).

Alternative to crochet bind-off: knit two more rows of garter stitch and bind-off loosely using your favorite method. I recommend “Jeny’s Surprisingly Stretchy Bind-off”, demonstrated [here](#).

7. Finishing

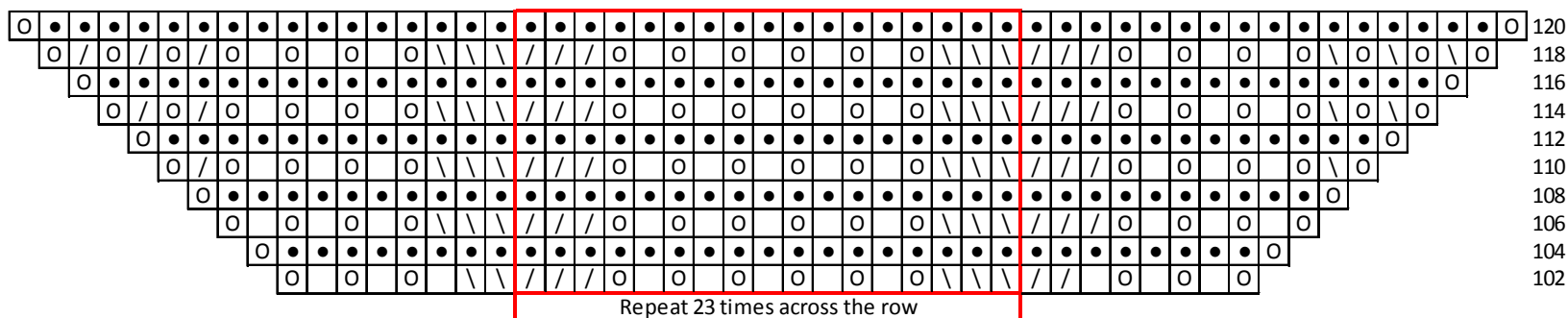
If you have not done so already, weave in all ends but do not trim them yet. Soak your shawl in lukewarm water with a drop of rinse-free wool wash. Squeeze out excess water gently and wrap it in a towel. Step on towel to gently remove a maximum of water. Block your shawl to measurements, pinning each crochet loop. Once dry, unpin your shawl and only then, trim all ends.



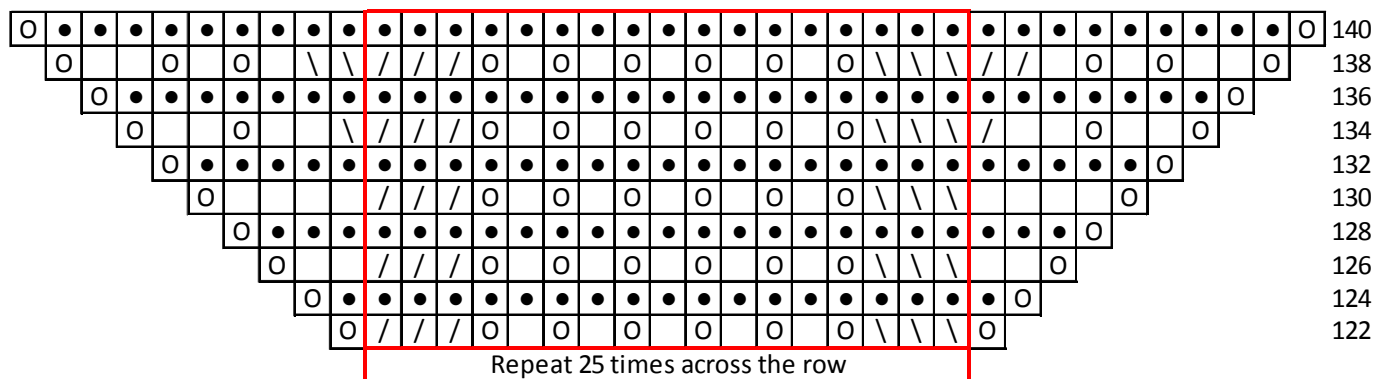
Audrey shawl

By Christelle Bagea

Wavy Stripes - chart 1



Wavy Stripes - chart 2



Charts key

- knit
- purl
- yo
- / k2tog
- \ ssk

