

EDLOTHIA

©Morben Design / Jasmin Räsänen

Please respect my copyright



You will need between 900-1100m yarn, it depends which material and hook size you are using.

In my example I used 1000m of Wolle Kunterbunt Mir Herz and hook 3,5mm.

The shawl measures 184cm

All rights reserved. This pattern is for personal use only and may not be distributed or sold without prior written consent

Written by Rim N.D Mabrouk for Morben Design

Page 1

Used stitches

ch - chain

dc- double crochet

fpdc - front post double crochet

sp-space

sl sp- slip stitch

sc - single crochet

tr - treble crochet

dc3-tog - double crochet 3 together

hdc- half double crochet

Turn your work after every row

First ch of all row count for the first stich + first ch-space

Pattern

ch4 and close with sl sp

Row 1 : (ch4, 3dc, ch2, 3dc, ch1, dc) in the ring

Row 2: ch4, dc in first stitch, dc in first ch-sp, 3dc,

(2dc, ch2, 2dc) in ch-sp -middle

3dc, dc in last ch-sp, (dc, ch1, dc) in last stitch

Row 3: ch4, dc in first stitch, dc in first ch-sp, ch2, skip3, (dc, ch2, dc) in next stitch, ch2, skip3,

(2dc, ch2, 2dc) in ch-sp -middle

ch2, skip3, (dc, ch2, dc) in next stitch, ch2, skip3, dc in last ch-sp, (dc, ch1, dc) in last stitch

Row 4: ch4, dc in first stitch, dc in first ch-sp, dc in next stitch, ch2, skip 1dc& ch-sp, (2dc, ch2, 2dc) in ch-sp between 2dc, ch2, skip ch-sp & 1dc, dc in next stitch,

(2dc, ch2, 2dc) in ch-sp -middle

dc in next stitch, ch2, skip 1dc& ch-sp, (2dc, ch2, 2dc) in ch-sp between 2dc, ch2, skip ch-sp & 1dc, dc in next stitch, dc in last ch-sp, (1dc, ch1, 1dc) in last stitch

Row 5 : ch4, dc in first stitch, dc in first ch-sp, ch1, skip1, dc in next stitch, ch2, skip 1dc& ch-sp, (3dc, ch2, 3dc) in ch-sp between 4dc, ch2, skip ch-sp & 1dc, dc in next stitch, ch1,

(2dc, ch2, 2dc) in ch-sp -middle

ch1, skip1, dc in next stitch, ch2, skip 1dc& ch-sp, (3dc, ch2, 3dc) in ch-sp between 4dc, ch2, skip ch-sp & 1dc, dc in next stitch, ch1, dc in last ch-sp, (1dc, ch1, 1dc) in last stitch

Row 6: ch4, dc in first stitch, dc in first ch-sp, ch2, skip 2dc & ch-sp, (dc, ch2, dc) in next stitch, ch2, skip ch-sp, *(2dc, ch2, 2dc) in ch-sp between 6dc, ch2, skip ch-sp, (dc, ch2, dc) in next stitch, ch2*

(2dc, ch2, 2dc) in ch-sp- middle

Skip 2dc & ch-sp, *ch2, (dc, ch2, dc) in next stitch, ch2, skip ch-sp, (2dc, ch2, 2dc) in ch-sp between 6dc*, ch2, skip ch-sp, (dc, ch2, dc) in next stitch, ch2, skip ch-sp & 2dc, dc in last ch-sp, (dc, ch1, dc) in last stitch

Row 7: ch4, dc in first stitch, dc in first ch-sp, dc in next stitch, ch2, skip 1dc& ch-sp, (2dc, ch2, 2dc) in next ch-sp between 2dc, ch2, skip ch-sp, *(dc, ch2, dc) in ch-sp between 4dc, ch2, skip ch-sp, (2dc, ch2, 2dc) in ch-sp between 2dc, ch2* skip ch-sp & 1dc, dc in next stitch,

(2dc, ch2, 2dc) in ch-sp -middle

dc in next stitch, skip 1dc& ch-sp, *ch2, (2dc, ch2, 2dc) in ch-sp between 2dc, ch2, skip ch-sp, (dc, ch2, dc) in ch-sp between 4dc,* ch2, skip ch-sp, (2dc, ch2, 2dc) in ch-sp between 2dc, ch2, skip ch-sp & 1dc, dc in next stitch, dc in last ch-sp, (dc, ch1, dc) in last stitch

Row 8: ch4, dc in first stitch, dc in first ch-sp, ch1, skip1, dc in next stitch, ch2, skip 1dc& ch-sp, (3dc, ch2, 3dc) in ch-sp between 4dc, ch2, skip ch-sp, *dc in ch-sp between 2dc, ch2, skip ch-sp, (3dc, ch2, 3dc) in ch-sp between 4dc, ch2, skip ch-sp & 1dc*, 1dc in next stitch, ch1,

(2dc, ch2, 2dc) in ch-sp -middle

ch1, skip1, dc in next stitch, *ch2, skip 1dc& ch-sp, (3dc, ch2, 3dc) in ch-sp between 4dc, ch2, skip ch-sp, 1dc in ch-sp between 2dc*, ch2, skip ch-sp, (3dc, ch2, 3dc) in ch-sp between 4dc, ch2, skip ch-sp & 1dc, dc in next stitch, ch1, dc in last ch-sp, (dc, ch1, dc) in last stitch

Row 9: like row 6 with *-* repeat

Row 10: like row 7 with *-* repeat

Row 11: like row 8 with *-* repeat

Row 12: like row 6 with *-* repeat

Row 13: like row 7 with *-* repeat

Row 14: like row 8 with *-* repeat

Row 15: ch4, dc in first stitch, dc in first ch-sp, work dc in every stitch

All rights reserved. This pattern is for personal use only and may not be distributed or sold without prior written consent

Written by Rim N.D Mabrouk for Morben Design

Page 3

(2dc, ch2, 2dc) in ch-sp -middle

Work dc in every stitch, dc in last ch-sp, (dc, ch1, dc) in last stitch

Row 16: ch4, dc in first stitch, dc in first ch-sp, work fpdc around every stitch,

(2dc, ch2, 2dc) in ch-sp -middle

work fpdc around every stitch, dc in last ch-sp, (dc, ch1, dc) in last stitch

Row 16 has 2x 68 stitches (136 complete)

Row 17: ch5, tr in first stitch, tr in first ch-sp, (tr, ch2, tr) in next stitch, *ch3, skip4, sc in next stitch, ch3, skip4, (tr, ch5, tr) in next stitch*

repeat *-*

ch3, skip4, sc in next stitch, ch1, skip1,

(2dc, ch2, 2dc) in ch-sp -middle

ch1, skip1, sc in next stitch, ch3, skip 4, *(tr, ch5, tr) in next stitch, ch3, skip4, sc in next stitch, ch3, skip4*

Repeat *-*

(tr, ch2, tr) in next stitch, tr in last ch-sp, (tr, ch1, tr) in last stitch

Row 18: ch5, tr in first stitch, tr in first ch-sp, ch3, skip2, sc in next tr, ch3, skip ch-sp and 1tr , (tr, ch5, tr) in sc between ch-sp, *ch3, sc in ch-sp between 2tr, ch3, (tr, ch5, tr) in sc between ch-sp *

repeat *-*

ch3, skip ch-sp and 2dc

sc in ch-sp-middle

ch3, skip 2dc, *(tr, ch5, tr) in sc between ch-sp, ch3, sc in ch-sp between 2tr, ch3*

repeat *-*

(tr, ch5, tr) in sc between ch-sp, ch3, skip 1tr and ch-sp, sc in tr, ch3, tr in last ch-sp, (tr, ch1, tr) in last stitch

Row 19: ch5, tr in first stitch, tr in first ch-sp, skip 2tr, (tr, ch5, tr) in sc between ch-sp, * ch3, sc in ch-sp between 2tr, ch3, (tr, ch5, tr) in sc between ch-sp *

repeat *-*

ch3, sc in ch-sp between 2tr, ch3,

All rights reserved. This pattern is for personal use only and may not be distributed or sold without prior written consent

Written by Rim N.D Mabrouk for Morben Design

Page 4

(tr, ch2, tr) in sc-middle between ch-sp

ch3, sc in ch-sp between 2tr, ch3, *(tr, ch5, tr) in sc between ch-sp, ch3, sc in ch-sp between 2tr, ch3
*

repeat *-*

(tr, ch5, tr) in sc between ch-sp, tr in last ch-sp, (tr, ch1, tr) in last stitch

Row 20: ch5, tr in first stitch, tr in first ch-sp, ch3, skip 2tr, *sc in ch-sp between 2tr, ch3, (tr, ch5, tr)
in sc between ch-sp, ch3 *

repeat *-*

2sc in ch-sp-middle

*ch3, (tr, ch5, tr) in sc between ch-sp, ch3, sc in ch-sp between 2tr *,

repeat *-*

ch3, tr in last ch-sp, (tr, ch1, tr) in last stitch

Row 21: ch4, dc in first stitch, dc in first ch-sp, work dc in every stitch, (skip all tr)

2dc in first sc of middle, ch2, 2dc in second sc of middle

Work dc in every stitch (skip all tr), dc in last ch-sp, (dc, ch1, dc) in last stitch

Row 22: ch4, dc in first stitch, dc in first ch-sp, work fpdc around every stitch,

(2dc, ch2, 2dc) in ch-sp- middle

work fpdc around every stitch

1dc in last ch-sp, (dc, ch1, dc) in last stitch

Row 22 has 2x 98 stitches (196 complete)

Row 23: ch4, dc in first stitch, dc in first ch-sp, ch5, skip4, *dc, ch1, skip1, dc, ch5, skip4*

repeat *-*

dc, ch1, skip1,

(2dc, ch2, 2dc) in ch-sp-middle

ch1, skip1, dc, *ch5, skip4, dc, ch1, skip1, dc *

repeat *-*

ch5, skip4, dc in last ch-sp, (dc, ch1, dc) in last stitch

Row 24: ch4, dc in first stitch, dc in first ch-sp, 2dc, ch3, sc in ch5, ch3, *dc, dc in ch1, dc, ch3, sc in ch5, ch3*

repeat *-*

dc in next dc, dc in ch1, 2dc,

(2dc, ch2, 2dc) in ch-sp-middle

2dc, dc in ch1, dc, *ch3, sc in ch5, ch3, dc, dc in ch1, dc *

repeat *-*

ch3, sc in ch5, ch3, 2dc, dc in last ch-sp, (dc, ch1, dc) in last stitch

Row 25: ch4, dc in first stitch, dc in first ch-sp, dc in next stitch, *dc in next dc, ch1, skip1, dc, ch3, sc in sc between ch-sp, ch3*

repeat *-*

dc, ch1, skip1, dc, ch2, skip2, sc

(2dc, ch2, 2dc) in ch-sp-middle

sc, ch2, skip2, dc, ch1, skip1, dc, *ch3, sc in sc between ch-sp, ch3, dc, ch1, skip 1, dc*

repeat *-*

dc in next stitch, dc in last ch-sp, (dc, ch1, dc) in last stitch

Row 26: ch4, dc in first stitch, dc in first ch-sp, ch3, skip3, *dc in next stitch, dc in ch1, dc, ch3, sc in sc between ch-sp, ch3*

repeat *-*

dc, dc in ch1, dc, ch3, sc in sc, ch3

(2dc, ch2, 2dc) in ch-sp-middle

ch3, skip2, sc in sc, ch3, dc in next stitch, dc in ch1, dc, *ch3, sc in sc between ch-sp, ch3, dc, dc in ch1, dc*

repeat *-*

ch3, dc in last ch-sp, (dc, ch1, dc) in last stitch

Row 27: ch4, dc in first stitch, dc in first ch-sp, ch1, 3dc in ch3, *dc in next dc, ch1, skip 1, dc, ch5, skip (ch-sp, sc, ch-sp)*

repeat *-*

dc, ch1,

(2dc, ch2, 2dc) in ch-sp-middle

ch1, skip1, dc, *ch5, skip (ch-sp, sc, ch-sp), dc in next stitch, ch1, skip1, dc*

repeat *-*

3dc in ch3, ch1, dc in last ch-sp, (dc,ch1,dc) in last stitch

Row 28: ch4, dc in first stitch, dc in first ch-sp, ch2, skip2, sc in ch1, ch3, skip3, *dc in next stitch, dc in ch1, dc, ch3, sc in ch5, ch3*

repeat *-*

dc, dc in ch1, 2dc

(2dc, ch2, 2dc) in ch-sp-middle

2dc, dc in ch1, dc,*ch3, sc in ch5, ch3, dc, dc in ch1, dc*

repeat *-*

ch3,skip3, sc in ch1, ch2, dc in last ch-sp, (dc, ch1, dc) in last stitch

Row 29: ch4, dc in first stitch, dc in first ch-sp, dc in each dc and each sc, 2dc in each ch3-sp

(2dc, ch2, 2dc) in ch-sp-middle

dc in each dc and each sc, 2dc in each ch-sp, dc in last ch-sp, (dc, ch1, dc) in last stitch

Row 30: ch4, dc in first stitch, dc in first ch-sp, work fpdc around every stitch,

(2dc, ch2, 2dc) in ch-sp- middle

work fpdc around every stitch

dc in last ch-sp, (dc, ch1, dc) in last stitch

Row 31: ch4, dc in first stitch, dc in first ch-sp, dc in every stitch

(2dc, ch2, 2dc) in ch-sp -middle

dc in every stitch,

dc in last ch-sp, (dc, ch1, dc) in last stitch

Row 32 : ch4, dc in first stitch, dc in first ch-sp, fpdc around every stitch,

(2dc, ch2, 2dc) in ch-sp-middle

fpdc around every stitch

dc in last ch-sp, (dc, ch1, dc) in last stitch

Row 32 has 2x 150 stitches (300 complete)

Row 33: ch4, dc in first stitch, dc in first ch-sp, ch2, skip2, *dc, ch2, skip2*

Repeat *-*

(2dc, ch2, 2dc) in ch-sp-middle

ch2, skip2, *dc, ch2, skip2*

Repeat *-*

dc in last ch-sp, (dc, ch1, dc) in last stitch

Row 34: ch4, dc in first stitch, dc in first ch-sp, ch3, skip 2dc and ch-sp,*dc, ch3, skip (ch-sp, dc, ch-sp), 5dc in next dc, ch3, skip (ch-sp, dc, ch-sp)*

Repeat *-*

dc, ch3,

(2dc, ch2, 2dc) in ch-sp-middle

ch3, skip 2dc and ch-sp, dc, *ch3, skip (ch-sp, dc, ch-sp), 5dc in next dc, ch3, skip (ch-sp, dc, ch-sp), dc*

Repeat *-*

ch3, dc in last ch-sp, (dc, ch1, dc) in last stitch

Row 35: ch4, dc in first stitch, dc in first ch-sp, 2dc, ch2, skip ch3-sp,*dc, ch2, skip ch3-sp, 2dc in next dc, 3dc, 2dc in next dc, ch2, skip ch3-sp*

Repeat *-*

dc, ch2, skip ch3-sp, 2dc,

(2dc, ch2, 2dc) in ch-sp-middle

2dc, ch2, skip ch3-sp,dc, *ch2, skip ch3-sp, 2dc in next dc, 3dc, 2dc in next dc, ch2, skip ch3-sp, dc *

Repeat *-*

ch2, skip ch3-sp, 2dc, dc in last ch-sp, (dc, ch1, dc) in last stitch

Row 36: ch4, dc in first stitch, dc in first ch-sp, 3dc, ch3, skip dc and ch-sp,

dc in next dc, ch3, skip ch-sp and 1dc, dc in next 5 stitches, ch3, skip 1dc and ch-sp

Repeat *-*

dc in next dc, ch3, skip ch-sp and 1dc, 3dc,

(2dc, ch2, 2dc) in ch-sp-middle

3dc, ch3, skip 1dc and ch-sp, dc, *ch3, skip ch-sp and 1dc, dc in next 5 stitches, ch3, skip 1dc and ch-sp, dc *

Repeat *-*

ch3, skip ch-sp and 1dc, 3dc, dc in last ch-sp, (dc, ch1,dc) in last stitch

Row 37: ch4, dc in first stitch, dc in first ch-sp, ch1, skip1, dc3tog, ch5, skip 1dc and ch-sp,*dc in next dc, ch5, skip ch-sp and 1dc, dc3tog, ch5, skip 1dc and ch-sp*

Repeat *-*

dc in next dc, ch5, skip ch-sp and 1dc, 4dc,

(2dc, ch2, 2dc) in ch-sp-middle

4dc, ch5, skip 1dc and ch-sp, dc,* ch5, skip ch-sp and 1dc, dc3tog, ch5, skip 1dc and ch-sp, dc, *

Repeat *-*

ch5, skip ch-sp and 1dc, dc3tog, ch1, dc in last ch-sp, (dc, ch1, dc) in last stitch

Row 38: ch4, dc in first stitch, dc in first ch-sp, ch2, skip2, dc in ch-sp, ch2, skip dc3tog, dc in ch-sp, ch2,*dc, ch2, dc in ch-sp, ch2, dc in dc3tog, ch2, dc in ch-sp, ch2*

Repeat *-*

dc, ch2, dc in ch-sp, ch2, dc, ch2, skip2, dc3tog,

(2dc, ch2, 2dc) in ch-sp-middle

dc3tog, ch2, skip2, dc, ch2, dc in ch-sp, ch2, dc, *ch2, dc in ch-sp, ch2, dc in dc3tog, ch2, dc in ch-sp, ch2, dc*

Repeat *-*

ch2, dc in ch-sp, ch2, skip dc3tog, dc in ch-sp, ch2, skip2, dc in last ch-sp, (dc, ch1,dc) in last stitch

Row 39: ch4, dc in first stitch, dc in first ch-sp, dc in every stitch

(2dc, ch2, 2dc) in ch-sp- middle

dc in every stitch

dc in last ch-sp, (dc, ch1, dc) in last stitch

Row 40: ch4, dc in first stitch, dc in first ch-sp, fpdc around every stitch,

(2dc, ch2, 2dc) in ch-sp -middle

fpdc around every stitch

1dc in last ch-sp, (dc, ch1, dc) in last stitch

Row 40 has 2x 175 stitches (350 complete)

Row 41: ch4, dc in first stitch, dc in first ch-sp, *ch1, skip1, dc*

repeat *-*,

(2dc, ch2, 2dc) in ch-sp-middle

dc, *ch1, skip1, dc*

Repeat *-*

dc in last ch-sp, (dc, ch1, dc) in last stitch

Row 42: ch4, dc in first stitch, dc in first ch-sp, ch3, skip2, sc in ch-sp, *ch 3, skip (1dc, ch-sp, 1dc), sc in next ch-sp*

repeat *-*

ch3,

(2dc, ch2, 2dc) in ch-sp-middle

ch3, skip3, *sc in ch-sp, ch3, skip (1dc, ch-sp, 1dc)*,

repeat *-*

Sc in ch-sp, ch3, dc in last ch-sp, (dc, ch1, dc) in last stitch

Row 43: ch4, dc in first stitch, dc in first ch-sp, ch3, *sc in next ch-sp ,ch3*

repeat *-*

(2dc, ch2, 2dc) in ch-sp-middle

ch3, skip2, *sc in next ch-sp, ch3, *

repeat *-*

dc in last ch-sp, (dc, ch1, dc) in last stitch

Row 44: ch4, dc in first stitch, dc in first ch-sp, ch3, *sc in next ch-sp, ch3*

repeat *-*

(2dc, ch2, 2dc) in ch-sp-middle

ch3, skip2, *sc in next ch-sp, ch3*

repeat *-*

dc in last ch-sp, (dc, ch1, dc) in last stitch

Row 45: ch4, dc in first stitch, dc in first ch-sp, ch1, *3dc in next ch-sp, ch1*

repeat *-*

(2dc, ch2, 2dc) in ch-sp-middle

ch1, 3dc in next ch-sp,

repeat *-*

ch1, dc in last ch-sp, (dc, ch1, dc) in last stitch

Row 46: ch4, dc in first stitch, dc in first ch-sp, dc , *ch1, skip1, 1dc in ch1, ch1, skip1, dc*

repeat *-*

(2 dc , ch 2, 2 dc) in middle ch-space

dc, ch1, skip1, 1dc in ch1, ch1

repeat *-*

skip1, dc, dc in last ch-sp , (dc, ch1, dc) in last stitch

Row 47: ch4, dc in first stitch, dc in first ch-sp, ch6, skip3,* sc in next ch-sp, ch6, skip(dc, ch-sp,dc), *

repeat *-*

sc in dc, ch1,

(2dc, ch2, 2dc) in ch-sp-middle

ch1, skip1, sc in dc,* ch6, skip(dc, ch-sp, dc), sc in next ch-sp, *

repeat *-*

ch6, skip3, dc in last ch-sp, (dc, ch1, dc) in last stitch

Row 48: ch4, dc in first stitch, dc in first ch-sp, ch4, skip2,*sc in next ch-sp, ch6*

repeat *-*

(2dc, ch2, 2dc) in ch-sp-middle

*ch6, skip(2dc, ch-sp, 1sc), sc in next ch-sp *

repeat *-*

ch4, skip2, dc in last ch-sp, (dc, ch1, dc) in last stitch

Row 49: ch4, dc in first stitch, dc in first ch-sp, ch3, skip2, *sc in next ch-sp, ch6*

repeat *-*

(2dc, ch2, 2dc) in ch-sp-middle

*ch6, sc in next ch-sp *

repeat *-*

ch3, dc in last ch-sp, (dc, ch1, dc) in last stitch

Row 50: ch4, dc in first stitch, dc in first ch-sp, ch1, skip2, *3dc in next ch-sp, ch1*

repeat *-*

(2dc, ch2, 2dc) in ch-sp-middle

*ch1, 3dc in next ch-sp *

repeat *-*

ch1, dc in last ch-sp, (dc, ch1, dc) in last stitch

Row 51: ch4, dc in first stitch, dc in first ch-sp, dc in every stitch

(2dc, ch2, 2dc) in ch-sp-middle

dc in every stitch

dc in last ch-sp, (dc, ch1, dc) in last stitch

Row 52: ch4, dc in first stitch, dc in first ch-sp, fpdc around every stitch,

(2dc, ch2, 2dc) in ch-sp-middle

fpdc around every stitch

dc in last ch-sp, (dc, ch1, dc) in last stitch

Row 52 has 2x 218 stitches (436 complete)

Row 53: ch4, dc in first stitch, dc in first ch-sp, ch3, skip2, *dc in each of next 3stitches, ch3, skip2*

Repeat *-*

(2dc, ch2, 2dc) in ch-sp-middle

ch3, skip2, dc in each of 3stitches

Repeat *-*

ch3, skip2, dc in last ch-sp, (dc, ch1, dc) in last stitch

Row 54: ch4, dc in first stitch, dc in first ch-sp, *ch2, skip 2dc, sc in ch-sp, ch2, (3dc, ch3, 3dc) in next ch-sp*

Repeat *-*

(2dc, ch2, 2dc) in ch-sp-middle

skip2, *(3dc, ch3, 3dc) in ch-sp, ch2, sc in next ch-sp, ch2, *

Repeat *-*

dc in last ch-sp, (dc, ch1, dc) in last stitch

Row 55: ch5, tr in first stitch, tr in first ch-sp, ch2, *sc in sc between ch-sp, ch2, [(tr+ch1) x6times, tr] in ch-sp between 6dc, ch2*

repeat *-*

(2dc, ch2, 2dc) in ch-sp-middle

[ch2, (tr+ch1) x 6times, tr] in ch-sp between 6dc, ch2, sc in sc between ch-sp

repeat *-*

ch2, tr in last ch-sp, (tr, ch1, tr) in last stitch

Row 56: 4ch, dc in first stitch, dc in first ch-sp, ch1, skip1, dc, ch1, *(dc in ch-sp between tr, ch1) x6times *

repeat *-*

(2dc, ch2, 2dc) in ch-sp-middle

(ch1, dc in ch-sp between tr) x6times

repeat *-*

ch1, dc in next tr, ch1, dc in last ch-sp, (dc, ch1, dc) in last stitch

Row 57: ch4, dc in first stitch, dc in first ch-sp, ch1, skip2, 3dc in ch1-sp, skip ch-sp, *[(3dc in next ch-sp, ch1), skip ch-sp] x2times, 3dc in next ch-sp, skip ch-sp*

repeat *-*

(2dc, ch2, 2dc) in ch-sp-middle

skip (2dc, ch-sp, dc), *[(3dc in next ch-sp, ch1), skip ch-sp] x2times, 3dc in next ch-sp, skip ch-sp, *

repeat *-*

3dc in next ch-sp, ch1, dc in last ch-sp, (dc, ch1, dc) in last stitch

Row 58: ch4, dc in first stitch, dc in first ch-sp, ch1, 3dc in next ch-sp, ch2, dc between dc-group, ch2
(3dc in next ch-sp between dc- group, ch2) x2, dc between dc -group, ch2

repeat *-*

(2dc, ch2, 2dc) in ch-sp-middle

ch2, skip2, dc between 2stitches, (ch2, 3dc in ch-sp) x2 ,*ch2, dc between dc -group, (ch2, 3dc in ch-sp) x2 *

repeat *-*

ch2, dc in between last dc -group , ch2, 3dc in ch-sp, ch1, dc in last ch-sp, (dc, ch1, dc) in last stitch

Row 59: ch4, dc in first stitch, dc in first ch-sp, 2sc, ch2, sc in next 3dc, ch6, skip (ch-sp, 1dc, ch-sp),
*3sc, ch2, sc in next 3dc, ch6, skip (ch-sp, 1dc, ch-sp) *

repeat *-*

sc in next 2dc

(2dc, ch2, 2dc) in ch-sp-middle

sc in next 2dc, *ch6, skip (ch-sp, 1dc, ch-sp), 3sc, ch2, sc in next 3dc*

repeat *-*

ch6, skip (ch-sp, 1dc, ch-sp), 3sc, ch2, sc in next 2dc, dc in last ch-sp, (dc, ch1, dc) in last stitch

!!! Information for row 60 !!! The part written in blue, can be worked with sc

instead of dc. It depends on how much yarn you still have and what you like

more.

Row 60: ch4, dc in first stitch, dc in first ch-sp, dc in next 4stitches , 3dc in ch2-sp, dc in next
3stitches, 7dc in ch6-sp, *dc in next 3stitches, 3dc in ch2-sp, dc in next 3stitches, 7dc in ch6-sp*

repeat *-*

dc in next 4stitches

(2dc, ch2, 2dc) in ch-sp-middle

dc in next 4stitches, *7dc in ch6-sp, dc in next 3stitches, 3dc in ch2-sp, dc in next 3stitches*

repeat *-*

7dc in 6ch-sp, dc in next 3stitches, 3dc in ch2-sp, dc in next 4stitches, dc in last ch-sp, (dc, ch1, dc) in last stitch

Row 61: ch4, dc in first stitch, dc in first ch-sp, sc, sl st in next 5stitches, sc, 2dc in next stitch, sc, sl st in next 2 stitches, sc, hdc, dc in next 2stitches, (tr, picot on top of tr), dc in next 2stitches, hdc,*sc, sl st in next 2stitches, sc, 2dc in next stitch, sc, sl st in next 2 stitches, sc, hdc, dc in next 2stitches, (tr, picot on top of tr), dc in next 2stitches, hdc*

repeat *-*

sc, sl st in next 3stitches, sc, hdc,

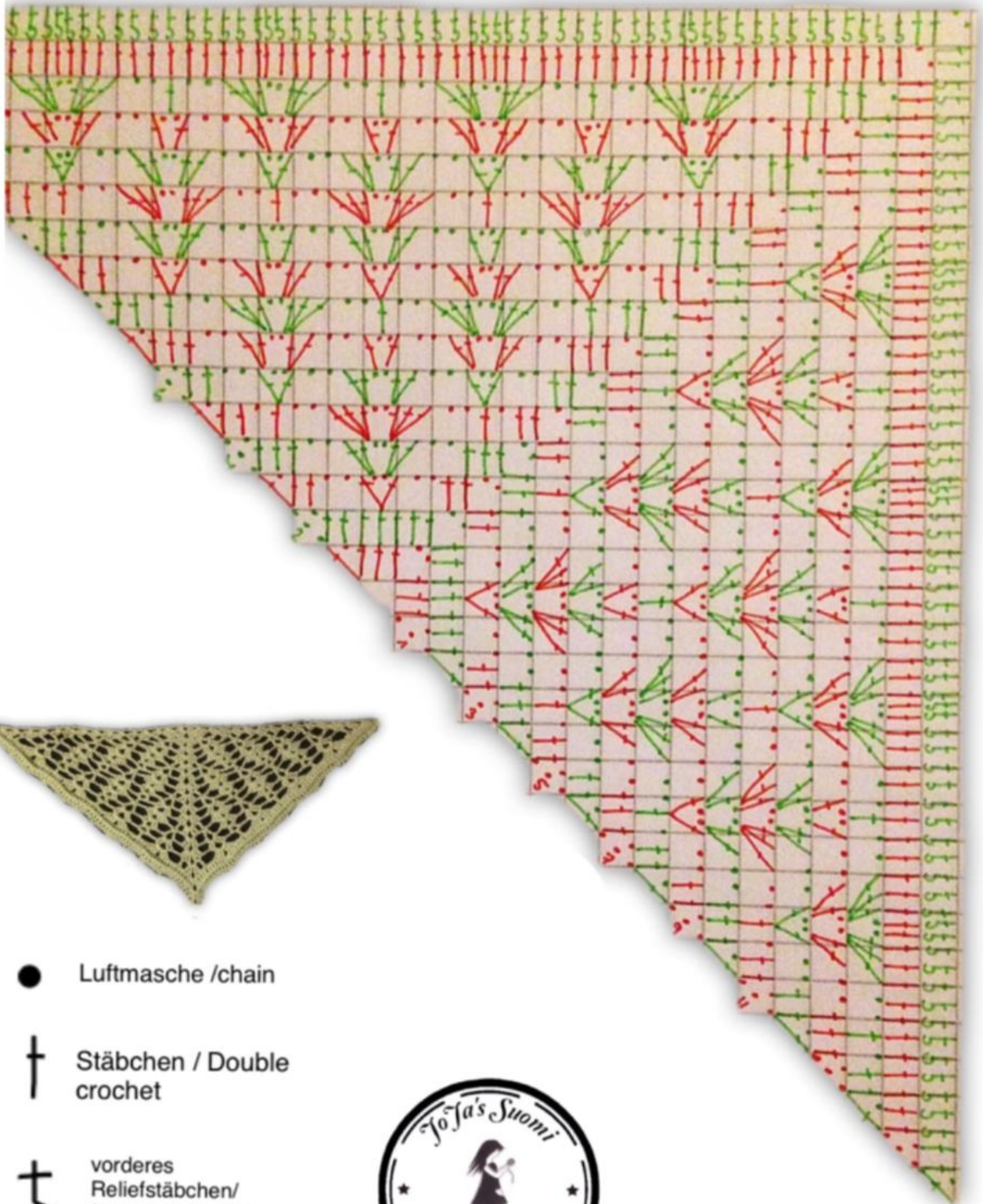
[2dc, (tr, picot on top of tr), 2dc] in ch-sp-middle

hdc, sc, sl st in next 3stitches, sc, *hdc, dc in next 2stitches, (tr, picot on top of tr), dc in next 2stitches, hdc, sc, sl st in next 2 stitches, sc, 2dc in next stitch, sc, sl st in next 2stitches, sc*

repeat *-*

hdc, dc in next 2stitches, (tr, picot on top of tr), dc in next 2stitches, hdc, sc, sl st in next 2stitches, sc, 2dc in next stitch, sc, sl st in next 5stitches, sc, dc in last ch-sp, (dc, ch, dc) in last stitch





● Luftmasche /chain

† Stäbchen / Double
crochet

‡ vorderes
Reliefstäbchen/
front post double
crochet

(US Terms)





• Luftmasche / chain
 + feste Masche / single crochet
 † Stäbchen / double crochet

‡ Doppelstäbchen / treble crochet
 † vorläufiges Reliefstäbchen
 front post double crochet

(letzte Reihe vom 1. Teil)
 (last row of part 1)

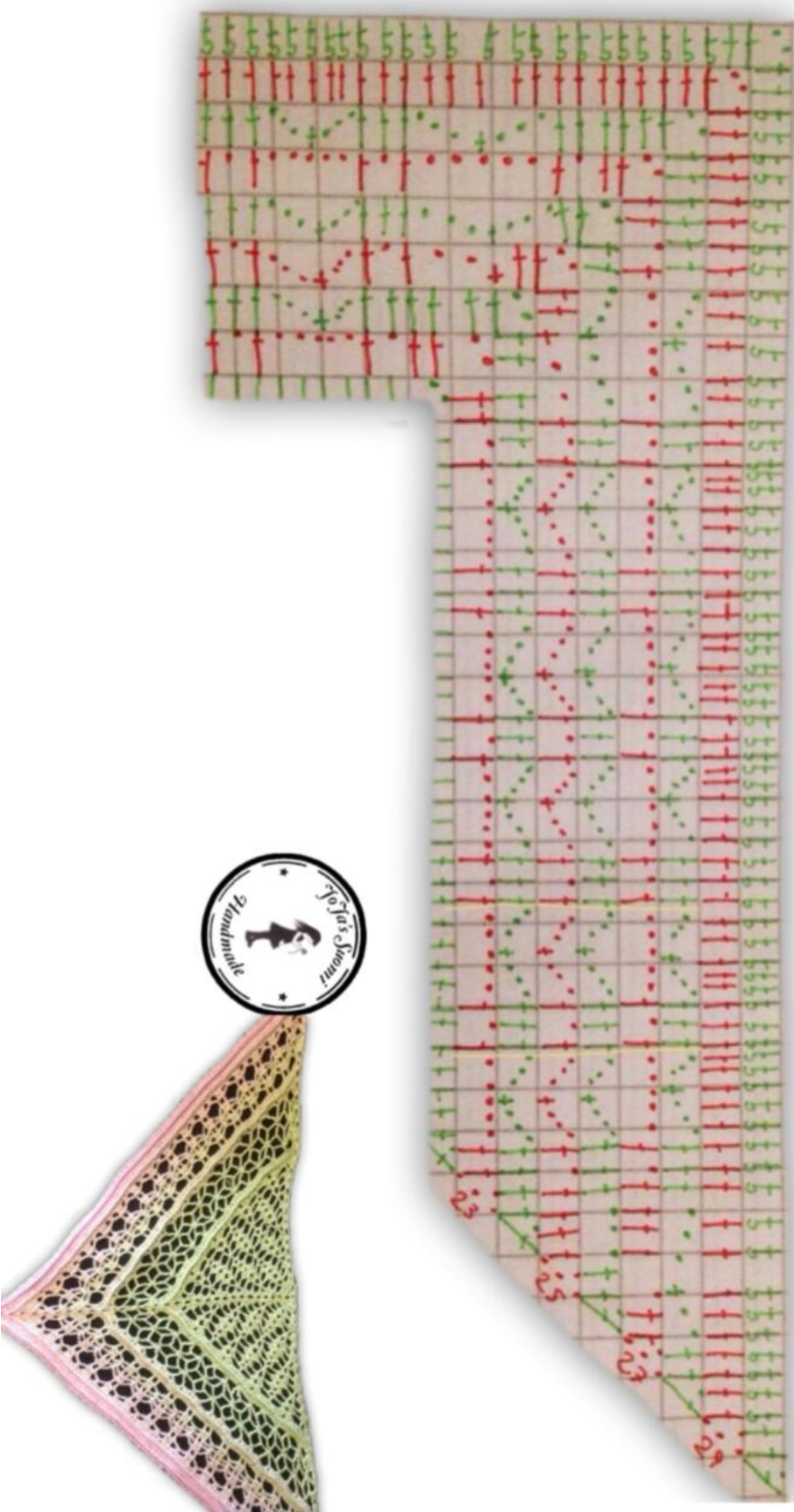
18
 19
 20
 21
 22

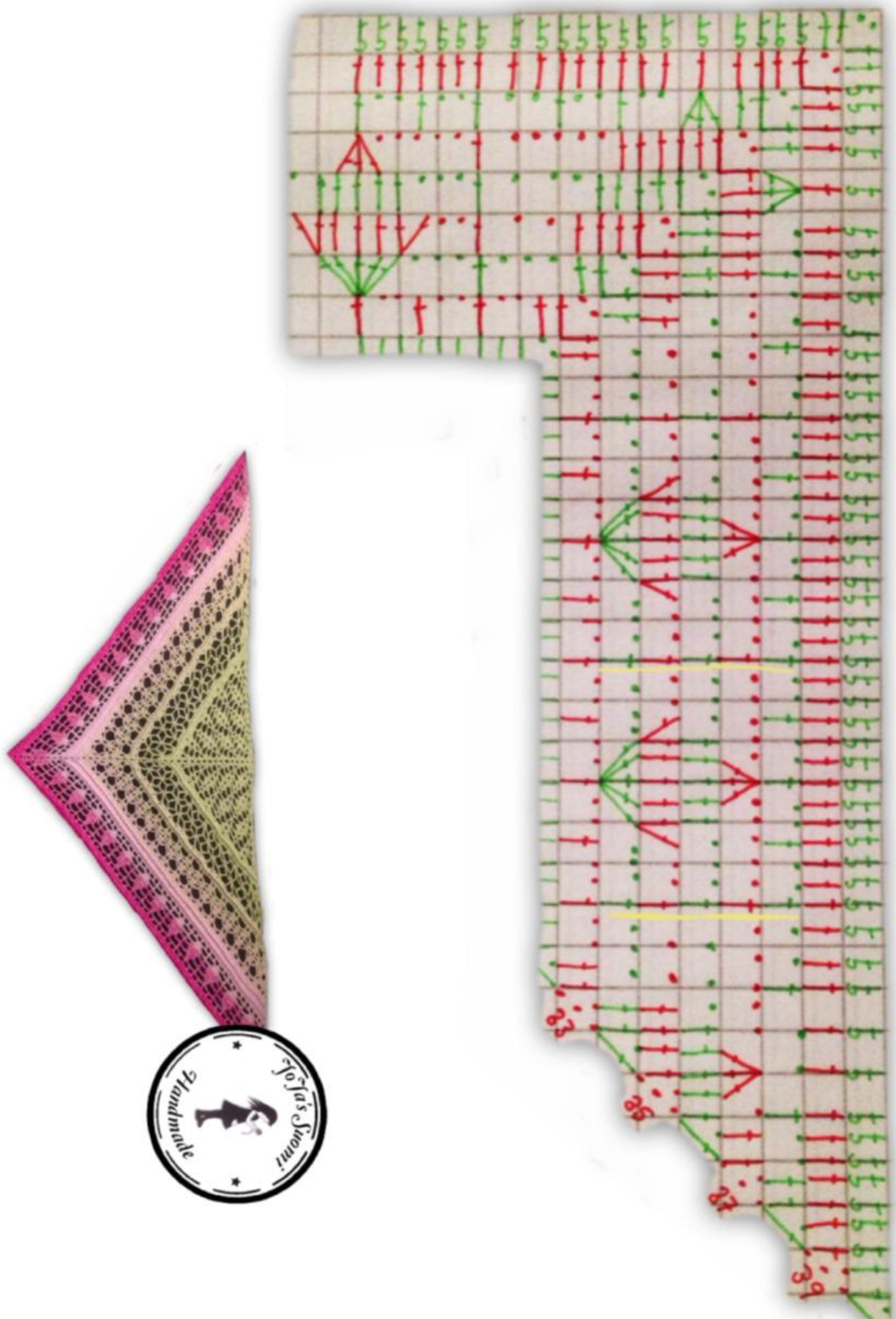
The diagram shows a grid of symbols for rows 18 through 22. Row 18 starts with a chain of 5 (55555) followed by a series of double crochets (†) and single crochets (+). Row 19 continues with a similar pattern, incorporating treble crochets (‡) and front post double crochets (†). Row 20 shows a more complex sequence of stitches, including double crochets and single crochets. Row 21 and 22 complete the pattern with a final row of double crochets and single crochets. The diagram uses various symbols to represent different stitch types and their placement within the rows.

Arbeite Reihe 31 wie Reihe 15. (Stäbchen in jede Masche)
Arbeite Reihe 32 wie Reihe 30 (Reliefstäbchen)

Work row 31 like row 15 (double crochet)

And work row 32 like row 30(front post double crochet)





Attention! In the chart is a little mistake. Start row 41 like all others : Ch4, dc in first stitch, dc in first ch-sp. Then ch1, skip1, dc and so on

