

Lothlorien knitting pattern - English



I designed the Rivendell shawl for my first book, *Journey*, a few years ago. Although it was a crochet pattern, the inspiration was born from my visit to the remaining set of the *Lord of the Rings* movies you can find in New Zealand. I have always been fascinated by the tales and books of J.R.R. Tolkien. The stories include so many details and layers that getting lost in a different world might be easy. To continue the journey, I have used another place out of the *Lord of the Rings* to inspire a knitting pattern: Lothlorien, home of the forest elves. There is much to tell about this place and this race; therefore, I have created several parts in this pattern, which all tell a little background about certain things that connect to this theme. So, prepare yourself for a journey through Middle-earth once more.

Mark a.k.a. The Guy with the Hook

Yarn Requirements: For this pattern, I used one Scheepjes Whirl. A Whirl comes in cakes of 215-225 grams with a length of 1000 meters of yarn. The yarn is made of 60% cotton and 40% acrylic. I used colorway 560 Jade Jim Jam for my version. You won't use the entire Whirl, approx. 900 meters of yarn will be used.

It may also be helpful to have some scrap yarn in contrasting colors by hand to add lifelines to your work between the parts. Take a scrap yarn with the same condition or weight as the one you are knitting.

Knitting needles needed:

In this pattern, you will use 3.5mm circular needles with a length of 80cm/32 inches.

Size: The longest side of the shawl will be approx. 64 inches and the depth of the shawl will be 30 inches.

Gauge: Scheepjes Whirl: 27 sts and 33 rows of stockinette measure 10x10cm (4x4 inches) with 3mm needles.

Special notes:

- Adding a lifeline to your work between each increase Row or after a Part may be helpful. This way, when making a mistake, you will always have your stitches secured to start over again and pick them up quickly.
- Using stitch markers is optional but will help you divide repeat sections within a Row. I have only written down two stitch markers in the Rows to make clear where the side stitches on both sides are situated but feel free to add as many in your work to help yourself.
- The shawl is knitted in Rows, which lets you work on the Right and Wrong sides of the pattern.
- Each Part holds a small chart of the section you will knit. However, this chart only shows one or a few repeats, not the entire Row.
- On both sides of the shawl, there are four garter stitches. This will deliver a solid border around the shawl. These stitches are separated from the central part by the stitch markers added. When we talk about these stitches, we refer to side stitches.

Stitch abbreviations :

- **K** – knit
- **P** – purl
- **KFB** – knit in the front and back. First, knit a stitch, but leave the loop on your needle. Now insert the needle from the back in the loop on your needle and knit another stitch. You have increased one stitch.
- **K2TOG** – knit 2 stitches together. A decrease is made.
- **SSK** – slip, slip, knit. Slip 2 stitches to the other needle. Now insert your needle through the two slipped sts and knit them together. A decrease is made.
- **YO** – yarn over. Pull the thread around the needle.
- **SL1** – slip 1
- **PSSO** – pull the slipped stitch over the last made stitch.
- **SM** – slip marker
- **INC** - increase
- **[]** – gives the total amount of sts at the end of a Row
- **()** – information between these indicates a small repeat in a Row – or sometimes a little note
- ***** - marks the beginning of a long repeat in a Row
- **RS**– Right Side of the work
- **WS** – Wrong Side of the work
- **REP** – repeat
- **ST(S)** – stitch(es)
- **CO** – cast on

Part 1:

In Part 1, we start the shawl and create a first pattern. The lace pattern, which will be the result of this Part, is based on the light of Earendil. When Frodo and the fellowship leave Lothlorien after a little break, the lady of Lothlorien – Galadriel, presents Frodo with a small gift—a crystal vial filled with water from Galadriel's fountain. The fountain, found on the forest ground under the giant trees of Lothlorien, holds the reflection of the light of Earendil – the most beloved star of the Elves. When looking closely at the vial, you will recognize the same decorations in the crystal as you will find in this lace part. And a fun fact: It is also the shape of the Eruvengil – the necklace of Elvish's daughter Arwen out of Rivendell.

Start with the Whirl and 3.5mm circular needles. Use "Judy's Magic Cast on" to CO 8 sts and 4 sts on each of the two needle tips.

Turn your work clockwise until your needle tips are facing to the right; work in Rows. Only work on 1 set of the 4 sts. The other set of 4 sts will be left to pick up later.

Knit 12 Rows of garter stitch (knit every Row). Use a Row counter to keep track.

After knitting the 12th Row, do not turn your work. Instead, rotate your work clockwise to pick up stitches from the 'long side'. Pick up and knit 6 stitches on this long side.

Now knit the 4 sts that were left on your needle from the cast-on. [14 sts]

OR – IN CASE YOU DON'T MASTER JUDY'S MAGIC CAST ON:

CO 4 sts on one needle. Knit 12 Rows of garter stitch (knit every Row). Now, turn your work clockwise and pick up 6 sts along the "long" side by using a crochet hook. Now, pick up another 4 sts out of the CO sts with a crochet hook as well. [14 sts]

R1 (WS): K4, place marker, p6, place marker, k4, turn.

R2 (RS)(inc): K4, sm, kfb until m, sm, k4, turn. [12 sts and 8 side sts]

R3 (WS): K4, sm, k1 until m, sm, k4, turn.

R4 (RS): K4, sm, k1 until m, sm, K4. Turn.

R5 (WS): K4, sm, p1 until m, sm, K4. Turn.

R6(RS) (inc): k4, sm, kfb until m, sm, k4, turn. [24 sts and 8 side sts]

R7 (WS): Rep R3.

R8 (RS): Rep R4.

R9 (WS): Rep R5.

R10 (RS) (inc): k4, sm, kfb until m, sm, k4, turn. [48 sts and 8 side sts]

R11 (WS): Rep R3.

R12 (RS): Rep R4.

R13 (WS): Rep R5.

So far, the start-up of the shawl. Let's continue with the lace section of this first Part.

In R1 of the first Part you will make 2 yo after each other. In R2, you will make a purl st in both of them; when encountering the double yo, first make a purl st in the back of the first yo, then make a regular purl st in the second yo.

R1 (RS): K4, sm, (p1, k1, k2tog, yo, yo, ssk, k1, p1) 6 times, sm, k4. Turn.

R2 (WS): K4, sm, (k1, p6, k1) 6 times, sm, k4. Turn.

R3 (RS): K4, sm, (p1, k2tog, yo, k2, yo, ssk, p1) 6 times, sm, k4. Turn.

R4 (WS): Rep R2.

R5 (RS): K4, sm, (p1, k6, p1) 6 times, sm, k4. Turn.

R6 (WS): Rep R2.

Repeat R1-6 another 2 times. After these 18 Rows, repeat R1-4 one more time.

R23 (RS) (inc): k4, sm, kfb until m, sm, k4, turn. [96 stitches and 8 side sts]

R24 (WS): K4, sm, k1 until m, sm, k4, turn.

R25 (RS) (inc): K4, sm, kfb, k1 in next 47 sts, kfb, k1 in next 46 sts, kfb, sm, k4. Turn. [99 sts and 8 side sts]

R26 (WS): K4, sm, p1 until m, sm, k4. Turn.

	16	15	14	13	12	11	10	9	8	7	6	5	4	3	2	1	
6						●	●	●	●	●	●						
					●							●					5
4						●	●	●	●	●	●						
					●	\	○			○	/	●					3
2						●	●	●	●	●	●						
					●		\	○	○	/		●					1
	16	15	14	13	12	11	10	9	8	7	6	5	4	3	2	1	



Knit / Recht



Purl / Averecht



Yarn over / maak een omslag



Slip, slip, knit / 2 steken afhaken, samen recht breien



Knit 2 together / 2 rechte steken samen breien



indicates the repeat pattern between the side stitches
rode lijn geeft de herhaal sectie in het patroon weer tussen de zijde-steken

Part 2:

In Part 2 there is a connection to Part 1 as we will see the brightness and power of the star Earendil. Rays of pure, white starlight shine upon the treetops, spreading the magical glow through Lothlorien. The light also gives power to the Elves, who endure the best in light instead of darkness.

R1 (RS): K4, sm, (yo, k2, ssk, k2tog, k2, yo, k1) 11 times, sm, k4. Turn.

R2 (WS): K4, sm, p all sts till next m, sm, k4. Turn.

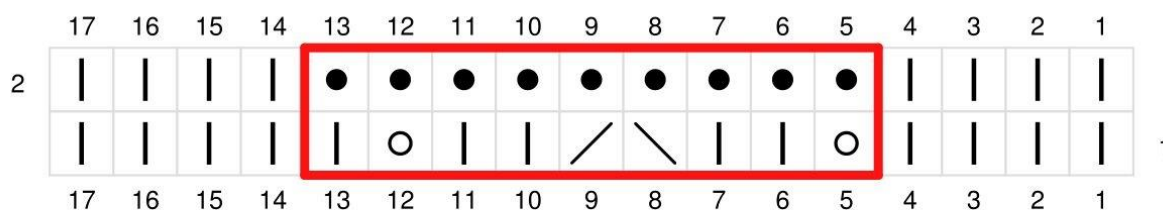
Rep R1 & 2 another 11 times. This will result in a total of 24 Rows.

R25 (RS) (inc): K4, sm, kfb in each st till next m, sm, k4. Turn. [198 sts and 8 side sts]

R26 (WS): K4, sm, k all sts till next m, sm, k4. Turn.

R27 (RS) (inc): K4, sm, kfb, k in next 196 sts, kfb, sm, k4. Turn. [200 sts and 8 side sts]

R28 (WS): K4, sm, p all sts till next m, sm, k4. Turn.



| Knit / Recht

● Purl / Averecht

\ Slip, slip, knit (SSK) / 2 steken afhaken en recht samen breien

/ Knit 2 together (K2TOG) / 2 steken samen recht breien

○ Yarn over / Omslag

Red lines indicate the repeat section between the side stitches.

Part 3:

Parts 3 and 4 will represent the architecture of the Elves. Often, you will find spiraled rooftops, bentwood lines, and very delicate decorations within walls and stairways. In this third Part, you will see a familiar motif out of the throne section of Lothlorien.

If you use stitch markers in this Part to separate the repeat section within the Rows, note that on each Row, the markers will change in position as the repeat parts also change.

R1 (RS): K4, sm, (k1, yo, k1, ssk, k3, k2tog, k1, yo) 20 times, sm, k4. Turn.

R2 and all even Rows till Row 20 (WS): K4, sm, p all sts till next m, sm, k4. Turn.

R3 (RS): K4, sm, k2, (yo, k1, ssk, k1, k2tog, k1, yo, k3) 19 times, yo, k1, ssk, k1, k2tog, k1, yo, k1, sm, k4. Turn.

R5 (RS): K4, sm, k3, (yo, k1, sl1-k2tog-pss0, k1, yo, k5) 19 times, yo, k1, sl1-k2tog-pss0, k1, yo, k2, sm, k4. Turn.

R7 (RS): K4, sm, (k1, k2tog, k1, yo, k3, yo, k1, ssk) 20 times, sm, k4. Turn.

R9 (RS): K4, sm, k2tog, k2, yo, (k3, yo, k2, sl1-k2tog-pss0, k2, yo) 19 times, k3, yo, k1, k2tog, sm, k4. Turn.

R11 (RS): K4, sm, k2, (k2tog, k1, yo, k1, yo, k1, ssk, k3) 19 times, k2tog, k1, yo, k1, yo, k1, ssk, k1, sm, k4. Turn.

R13 (RS): K4, sm, (k1, k2tog, k1, yo, k3, yo, k1, ssk) 20 times, sm, k4. Turn.

R15 (RS): K4, sm, k2tog, k2, yo, (k3, yo, k2, sl1-k2tog-pss0, k2, yo) 19 times, k3, yo, k1, k2tog, sm, k4. Turn.

R17 (RS): K4, sm, k2, (yo, k1, ssk, k1, k2tog, k1, yo, k3) 19 times, yo, k1, ssk, k1, k2tog, k1, yo, k1, sm, k4. Turn.

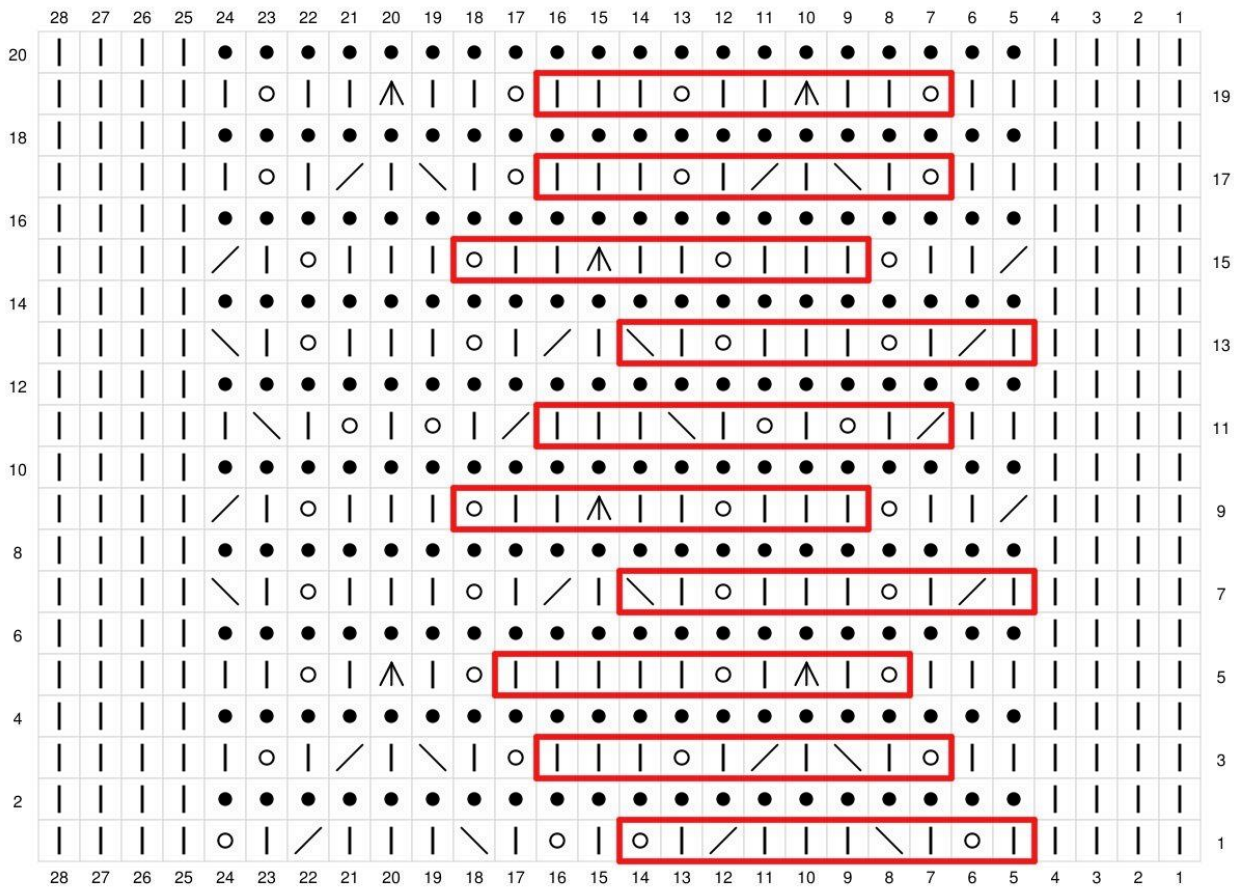
R19 (RS): K4, sm, k2, (yo, k2, sl1-k2tog-pss0, k2, yo, k3) 19 times, yo, k2, sl1-k2tog-pss0, k2, yo, k1, sm, k4. Turn.

R21 (RS): K4, sm, k all sts till next m, sm, k4. Turn.

R22 (WS): K4, sm, k all sts till next m, sm, k4. Turn.

R23 (RS): K4, sm, k all sts till next m, sm, k4. Turn.

R24 (WS): K4, sm, p all sts till next m, sm, k4. Turn.



- | Knit / Recht
- Purl / Averecht
- \ Slip, slip, knit (SSK) / 2 steken afhalen, 1 recht samen breien (2a1rs)
- / Knit 2 together (k2TOG) / 2 steken recht samen breien (2rs)
- ^ SL1-K2TOG-PSSO / 1 steek afhalen, 2 steken recht samen breien, afgehaalde steek over voorgaande steek halen (1a-2rs-1aso)
- Yarn over / omslag maken (o)

Red lines indicate the repeat section between the side stitches.

Part 4:

Part 4 will once again represent the architecture of the Elves. This time you will see the spiraled rooftops of the small towers around threes. Often there are spiraled stairs around large trees getting higher and higher. On many levels you will find small towers build up out of bended branches – graciously spiraling together in the rooftop.

R1 (RS): k4, sm, (p1, k1, k2tog, yo, k1, p1, k1, yo, ssk, k1) 20 times, sm, k4. Turn.

R2 and all even Rows till R10 (WS): k4, sm, (p4, k1, p4, k1) 20 times, sm, k4. Turn.

R3 (RS): k4, sm, (p1, k2tog, yo, k2, p1, k2, yo, ssk) 20 times, sm, k4. Turn.

R5 (RS): k4, sm, (p1, k1, yo, k1, k2tog, p1, ssk, k1, yo, k1) 20 times, sm, k4. Turn.

R7 (RS): Rep R5.

R9 (RS): k4, sm, (p1, k2, k2tog, yo, p1, yo, ssk, k2) 20 times, sm, k4. Turn.

Now, rep R1-10 one more time. Then, rep R1-4 once more. This will deliver a total of 24 Rows.

R25 (RS): k4, sm, p1, k4, (p1, k3, yo, sl1-k2tog-ssso, yo, k3) 19 times, p1, k4, sm, k4. Turn.

R26 (WS): k4, sm, p4, k1, (p9, k1) 19 times, p4, k1, sm, k4. Turn.


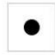




R27 (RS) (inc): k4, sm, kfb in each st till the next marker, sm, k4. Turn. [400 sts and 8 side sts]

R28 (WS): k4, sm, k1 in each st till the next marker, sm, k4. Turn.

R29 (RS) (inc): k4, sm, k1 in next 199 sts, kfb in next st, k1 in next 200 sts, sm, k4. Turn. [401 sts and 8 side sts]

R30 (WS): k4, sm, p1 in each st till next marker, sm, k4. Turn.

	18	17	16	15	14	13	12	11	10	9	8	7	6	5	4	3	2	1
26					●	●	●	●	●	●	●	●	●	●				
								○	▲	○				●				25
24					●	●	●	●		●	●	●	●					
					↘	○			●			○	/	●				23
22					●	●	●	●		●	●	●	●					
						↘	○		●		○	/		●				21
20					●	●	●	●		●	●	●	●					
							↘	○	●	○	/			●				19
18					●	●	●	●		●	●	●	●					
						○		↘	●	/		○		●				17
16					●	●	●	●		●	●	●	●					
						○		↘	●	/		○		●				15
14					●	●	●	●		●	●	●	●					
					↘	○			●			○	/	●				13
12					●	●	●	●		●	●	●	●					
						↘	○		●		○	/		●				11
10					●	●	●	●		●	●	●	●					
							↘	○	●	○	/			●				9
8					●	●	●	●		●	●	●	●					
						○		↘	●	/		○		●				7
6					●	●	●	●		●	●	●	●					
						○		↘	●	/		○		●				5
4					●	●	●	●		●	●	●	●					
					↘	○			●			○	/	●				3
2					●	●	●	●		●	●	●	●					
						↘	○		●		○	/		●				1
	18	17	16	15	14	13	12	11	10	9	8	7	6	5	4	3	2	1

-  Knit / Recht
-  Purl / Averecht
-  Slip, slip, knit (SSK) / 2 steken afhalen, 1 recht samen breien (2a1rs)
-  Knit 2 together (k2TOG) / 2 steken recht samen breien (2rs)
-  SL1-K2TOG-PSSO / 1 steek afhalen, 2 steken recht samen breien, 1 afgehaalde steek over de voorgaande steek halen (1a-2rs-1aso)
-  Yarn over / omslag maken (o)

Red lines indicate the repeat section between the side stitches.

Part 5:

In this Part, we will create the leaves of L_{orien}—a well-known thing in the story. The leaves of L_{orien} are growing all over L_{othlorien} and are used for many purposes. In practical use, the elves eat them and use them to cook. They also use them to pack up the lembas bread. Lembas bread is a particular type of bread baked by the elves – and packed in L_{orien} leaves to keep it fresh and available to transport along a journey. The L_{orien} leaf is also known as the inspiration for jewelry, as you will also see it in the movies as a brooch, which is gifted to each member of the fellowship upon leaving L_{othlorien}.

R1 (RS): k4, sm, p1, (yo, k3, yo, sl1-k2tog-pss0, yo, k2tog, yo, k2, sl1-k2tog-pss0, k2, yo, p1) 25 times, sm, k4. Turn

R2 and all even Rows till R12 (WS): k4, sm, (k1, p15) 25 times, sm, k4. Turn.

R3 (RS): k4, sm, p1, (yo, k5, yo, sl1-k2tog-pss0, yo, k2, sl1-k2tog-pss0, k2, yo, p1) 25 times, sm, k4. Turn.

R5 (RS): k4, sm, p1, (yo, k2, sl1-k2tog-pss0, k2, yo, ssk, yo, k1, sl1-k2tog-pss0, k1, yo, k1, yo, p1) 25 times, sm, k4. Turn.

R7 (RS): k4, sm, p1, (yo, k2, sl1-k2tog-pss0, k2, yo, skk, yo, sl1-k2tog-pss0, yo, k3, yo, p1) 25 times, sm, k4. Turn.

R9 (RS): k4, sm, p1, (yo, k2, sl1-k2tog-pss0, k2, yo, sl1-k2tog-pss0, yo, k5, yo, p1) 25 times, sm, k4. Turn.

R11 (RS): k4, sm, p1, (yo, k1, yo, k1, sl1-k2tog-pss0, k1, yo, k2tog, yo, k2, sl1-k2tog-pss0, k2, yo, p1) 25 times, sm, k4. Turn.

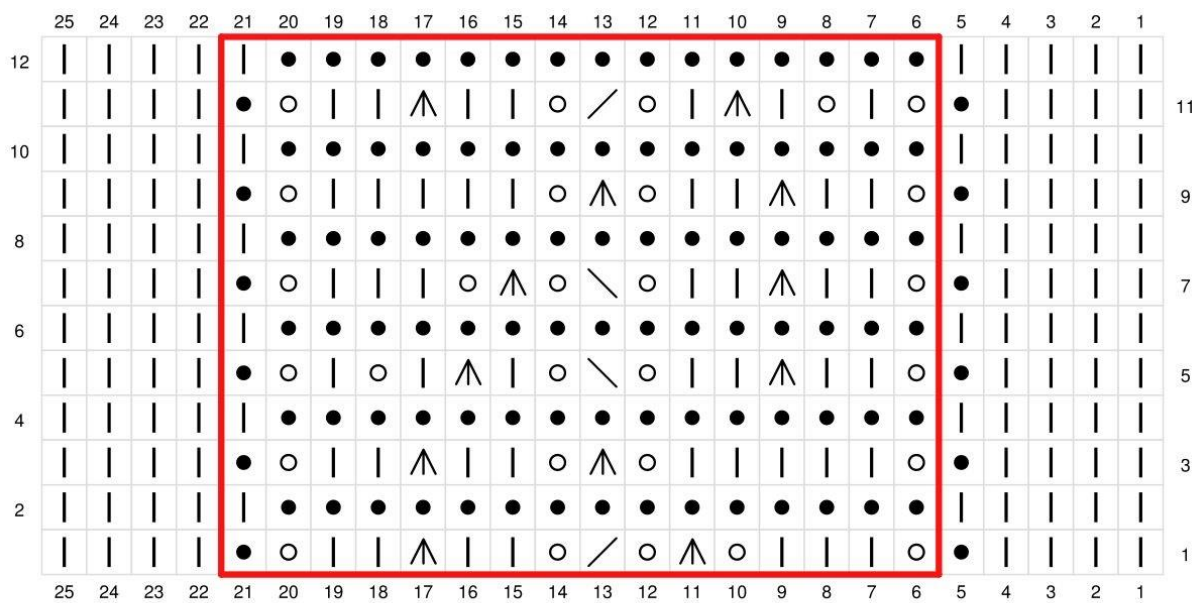
Now, rep R1-12 one more time. This will deliver a total of 24 Rows.

R25 (RS): k4, sm, k all sts till next marker, sm, k4. Turn.

R26 (WS): k4, sm, k all sts till next marker, sm, k4. Turn.

R27 (RS) (inc): k4, sm, kfb in next st, k all sts till last before marker, kfb in next st, sm, k4. Turn. [403 sts and 8 side sts]

R28 (WS): k4, sm, p1 in each st till the next marker, sm, k4. Turn.



- | Knit / Recht
- Purl / Averecht
- \ Slip, slip, knit (SSK) / 2a1rs - 2 steken afhaken - 1 recht samen breien
- / Knit 2 together (k2TOG) / 2rs - 2 steken recht samen breien
- ^ SL1-K2TOG-PSSO / 1a-2rs-1aso - 1steek afhaken, 2 steken recht samen breien , 1 afgehaalde steek over de vorige steek halen.
- Yarn over / o - maak een omslag

Red lines indicate the repeat section between the side stitches.

Part 6:

In this Part, we will knit little boat shaped motifs. The fellowship left Lothlorien in small, wooden boats which held the shape of the Lorien leaf. This was also the moment the story about Lothlorien ended – as well as this last Part of the shawl.

The markers in this next Part can move from position between Rows.

R1 (RS): k4, sm, yo, ssk, k1, (k3, yo, ssk, k1) 66 times, k2, k2tog, yo, sm, k4. Turn.

R2 and all even Rows till R18 (WS): k4, sm, p all sts till next marker, sm, k4, Turn.

R3 (RS): k4, sm, k1, yo, ssk, (k1, k2tog, yo, k1, yo, ssk) 66 times, k1, k2tog, yo, k1, sm k4. Turn.

R5 (RS): k4, sm, k2, yo, (sl1-k2tog-pssso, yo, k3, yo) 66 times, sl1-k2tog-pssso, yo, k2, sm, k4. Turn.

R7 (RS): k4, sm, k3, (yo, k2tog, k4) 66 times, yo, k2tog, k2, sm k4. Turn.

R9 (RS): Repeat R7.

R11 (RS): Repeat R7.

R13 (RS): Repeat R7.

R15 (RS): k4, sm, k1, k2tog, yo, (k1, yo, ssk, k1, k2tog, yo) 66 times, k1, yo, ssk, k1, sm, k4. Turn.

R17 (RS): k4, sm, k2tog, yo, k1, (k2, yo, sl1-k2tog-pssso, yo, k1) 66 times, k2, yo, ssk, sm, k4. Turn.

R19 (RS): k4, sm, k all sts till next marker, sm, k4. Turn.

R20 (WS): k4, sm, k all sts till next marker, sm, k4. Turn.

R21 (RS) (inc): k4, sm, k3, (kfb, k79) 5 times, sm, k4. Turn. [408 sts + 8 side sts]

R22 (WS): k4, sm, p all sts till next marker, sm, k4. Turn.

	21	20	19	18	17	16	15	14	13	12	11	10	9	8	7	6	5	4	3	2	1	
17					\	o				o	^	o				o	/					
16					•	•	•	•	•	•	•	•	•	•	•	•	•					
15					\	o		o	/		\	o		o	/							
14					•	•	•	•	•	•	•	•	•	•	•	•	•					
13						/	o					/	o									
12					•	•	•	•	•	•	•	•	•	•	•	•	•					
11						/	o					/	o									
10					•	•	•	•	•	•	•	•	•	•	•	•	•					
9						/	o					/	o									
8					•	•	•	•	•	•	•	•	•	•	•	•	•					
7						/	o					/	o									
6					•	•	•	•	•	•	•	•	•	•	•	•	•					
5						o	^	o				o	^	o								
4					•	•	•	•	•	•	•	•	•	•	•	•	•					
3						o	/		\	o		o	/		\	o						
2					•	•	•	•	•	•	•	•	•	•	•	•	•					
1					o	/				\	o					\	o					
	21	20	19	18	17	16	15	14	13	12	11	10	9	8	7	6	5	4	3	2	1	

- | Knit /Recht
- Purl / Averecht
- \ Slip, slip, knit (SSK) / 2a1rs - 2 steken afhalen en recht samen breien
- / Knit 2 together (k2TOG) / 2rs - 2 steken recht samen breien
- ^ SL1-K2TOG-PSSO / 1a-2rs-1aso - 1afhalen, 2 recht samen breien en 1 afgehaalde steek over de vorige halen
- o Yarn over / o - omslag maken

Red lines indicate the repeat section between the side stitches.

The Border:

R1 (RS): k4, sm, (k5, yo, sl1-k2tog-ssso, yo, k4) 34 times, sm, k4. Turn.

R2 (WS): k4, sm, p all sts till the next marker, sm, k4. Turn.

R3 (RS): k4, sm, (k4, yo, k1, sl1-k2tog-ssso, k1, yo, k3) 34 times, sm, k4. Turn.

R4 (WS): Repeat R2.

R5 (RS): k4, sm, (k3, yo, k1, p1, sl1-k2tog-ssso, p1, k1, yo, k2) 34 times, sm, k4. Turn.

R6 (WS): k4, sm, (p4, k1, p1, k1, p5) 34 times, sm, k4. Turn.

R7 (RS): k4, sm, (k2, yo, k1, p1, k1, sl1-k2tog-ssso, k1, p1, k1, yo, k1) 34 times, sm, k4. Turn.

R8 (WS): k4, sm, (p3, k1, p3, k1, p4) 34 times, sm, k4. Turn.

R9 (RS): Bind off all sts knitwise.

Block the shawl wet and very tight for the perfect outcome.

	20	19	18	17	16	15	14	13	12	11	10	9	8	7	6	5	4	3	2	1	
8					●	●	●		●	●	●		●	●	●	●					
						○		●		∧		●		○							7
6					●	●	●	●		●		●	●	●	●	●					
							○		●	∧	●		○								5
4					●	●	●	●	●	●	●	●	●	●	●	●					
								○		∧		○									3
2					●	●	●	●	●	●	●	●	●	●	●	●					
									○	∧	○										1
	20	19	18	17	16	15	14	13	12	11	10	9	8	7	6	5	4	3	2	1	



Knit / Recht



Purl / Averecht



SL1-K2TOG-PSSO / 1a-2rs-1aso - 1 steek afhalen, 2 steken recht samen breien en 1 afgehaalde steek over de vorige halen.



Yarn over / o-omslag maken

Red lines indicate the repeat section between the side stitches.

A big thanks to my tester:

- Tineke Tap

Designed by: *the guy with the hook* – 2024

<https://theguywiththehook.com>

<https://www.instagram.com/theguywiththehook>

<https://www.ravelry.com/projects/theguywiththehook>

<https://www.ravelry.com/designers/mark-roseboom>

<https://www.facebook.com/theguywiththehook>

All copyrights and terms of use are with me. Please do not copy or share this pattern. In 2019, I started using the international copyright rules and terms that apply to countries worldwide. It also includes countries that did not agree to work with this accord. Recently, it has become common for crochet patterns and designs to be stolen from designers, including myself. I have no other choice but to tighten up the copyright validation. Legal action will be taken if sharing occurs in Telegram/WhatsApp groups, social media, secret groups, or websites.

*Feel free to sell finished items using this pattern. Please tag or reference me as the designer when showing your WIP's or finished projects and use the hashtag **#Lothlorienknittingpattern** on social media to share.*

Last but not least, thank you so much for making this pattern. A lot of time, effort, and creativity are wrapped in this little piece of art. Every creation that comes from this pattern makes all my efforts so worthwhile.

Mark, a.k.a. the guy with the hook