



caldicott scarf

Kathleen Sperling

Finished Size

8" wide and 66" long.

Yarn

Worsted weight (#4 medium).

Shown here: Wisdom Yarns Poems Silk Solids (75% wool, 25% silk; 109 yd [100 m]/[50 g]): #702 sterling, 4 balls.

Needles

Size U.S. 6 (4 mm).

Adjust needle size if necessary to obtain the correct gauge.

Notions

Tapestry needle.

Gauge

18½ sts and 28 rows = 4" in charted patts.

Scarf

CO 37 sts.

*Knit 7 rows, ending with a RS row.

Beg with a WS row, work Chart A for 107 rows, ending with a WS row.

Knit 7 rows, ending with a RS row.

Beg with a WS row, work Chart B for 107 rows, ending with a WS row.

Rep from * once more.

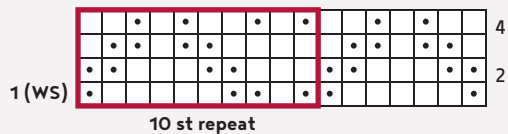
Knit 6 rows.

BO all sts.

Finishing

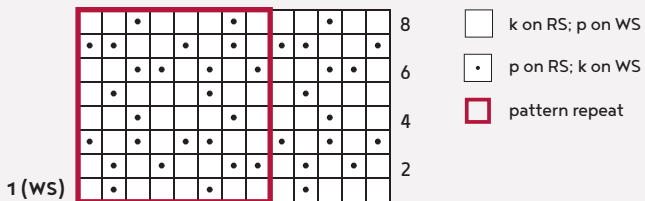
Weave in ends. Block.

CHART A



10 st repeat

CHART B



8 st repeat





arches scarf

Kyle Kunnecke

Finished Size

59¼" long by 10" wide.

Yarn

Worsted weight (#4 medium).

Shown here: HiKoo Simplinatural (40% baby alpaca, 40% fine Merino wool, 20% mulberry silk; 183 yd [167 m]/100 g): #053 cabernet, 4 skeins.

Needles

Size U.S. 7 (4.5 mm): 16" circular (cir) or straight.

Size U.S. 8 (5 mm): 16" cir or straight.

Adjust needle size if necessary to obtain the correct gauge.

Notions

Stitch markers (m); cable needle (cn); tapestry needle.

Gauge

22½ sts and 25 rows = 4" in chart patt with larger needles, blocked.

Notes

- Most of the cabling on this scarf is worked on RS rows, leaving the WS rows full of knit and purl stitches. Every once in a while, however, the center cable wraps over itself, which requires cabling on a WS row. Pay careful attention to this cable and remember that it is worked differently than the others.
- To keep from stretching cabled stitches, choose a cable needle with a diameter equal to or smaller than the project needle size.

STITCH GUIDE

1 × 1 Ribbed Cast-On: Make a slipknot, leaving a yarn tail that is 6" long. Insert needle into loop, then snug it up. This first stitch looks like a purl stitch.

Insert RH needle tip as if to knit, yarn over and pull through a loop, then place the new stitch on LH needle tip.

*Insert RH needle tip as if to purl between 2 sts on LH needle tip, yarn over and pull loop through a loop, then place the new stitch on LH needle tip.

Insert RH needle tip as if to knit between first 2 sts on LH needle tip, yarn over and pull through a loop, then place the new stitch on LH needle tip. Repeat from * until the required number of stitches are on LH needle tip; the final stitch is the last loop made.

Seed Stitch Bind-Off: Use a needle one or two sizes smaller than for the project for the bind-off.

P1, move yarn to back, sl st just made to LH needle tip, k2tog-1 st BO.

*Move yarn to front, sl st from RH needle tip to LH needle tip, p2tog-1 st BO. Move yarn to back, sl st from RH needle tip to LH needle tip, k2tog-1 st BO; repeat from * until all sts have been BO.

2/1LPC (2 over 1 left purl cross): Sl 2 sts onto cn and hold in front, p1, k2 from cn.

2/1RPC (2 over 1 right purl cross): Sl 1 st onto cn and hold in back, k2, p1 from cn.

2/2LC WS (2 over 2 left cross on wrong side): Sl 2 sts onto cn and hold in front, p2, p2 from cn.

2/2LPC (2 over 2 left purl cross): Sl 2 sts onto cn and hold in front, p2, k2 from cn.

2/2RPC (2 over 2 right purl cross): Sl 2 sts onto cn and hold in back, k2, p2 from cn.

Scarf

With smaller needles, CO 56 sts using the 1×1 Ribbed Cast-On method (see Stitch Guide).

Row 1: (RS) *K1, p1; rep from *.

Row 2: (WS) *P1, k1; rep from *.

Work 3 more rows in est patt.

Change to larger needles.

Set-up row: (WS) [P1, k1] twice, place marker (pm), [p1, k1] 3 times, p5, [k1, p1] 5 times, k1, p5, [k1, p1] 5 times, k1, p5, [k1, p1] twice, k1, pm, [p1, k1] twice.

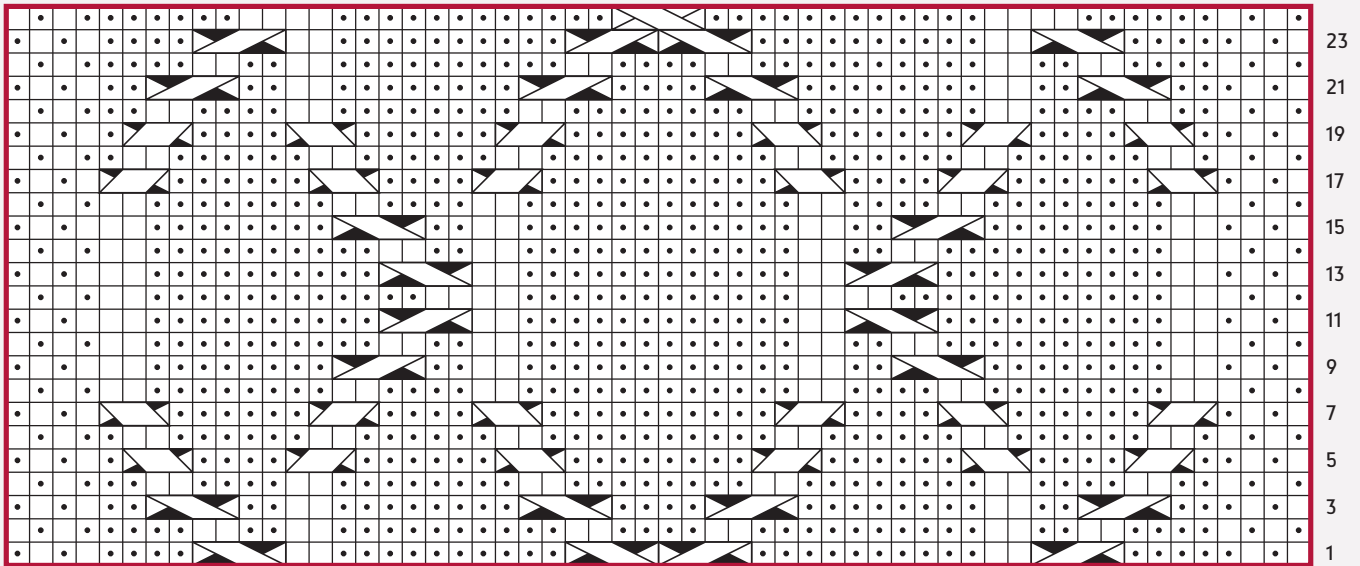
BEGIN CHART

Work Rows 1-24 of the Chart A 14 times, slipping markers as you come to them.

Work Rows 1-23 once more. Piece should measure 58¼" from beg.



CHART A



56 sts



Next row: (WS) (P1, k1) twice, remove marker, (p1, k1) 3 times, p5, (k1, p1) 5 times, k1, p5, (k1, p1) 5 times, k1, p5, (k1, p1) twice, k1, remove marker, (p1, k1) twice.

Change to smaller needles.

Next row: (RS) *K1, p1; rep from *.

Next row: (WS) *P1, k1; rep from *.

Work 3 more rows in est patt.

BO using Seed st method (see Stitch Guide). Cut yarn, leaving a 6" tail.

Finishing

Weave in all ends, waiting to cut yarn tails until after piece has been blocked.

Soak piece in cool water with a little wool wash. Lift out and gently squeeze to remove water. Lay on a towel and roll up to remove excess water. Unroll, shape, and lay piece flat to dry.



leadville cowl

Annie Watts

Finished Size

Circumference: 25½".

Height: 8½".

Yarn

Bulky weight (#5 bulky).

Shown here: The Fibre Company Tundra (60% baby alpaca, 30% Merino wool, 10% silk; 120 yd [110 m]/3½ oz [100 g]); mink, 3 skeins.

Needles

Size U.S. 9 (5.5 mm): 24" circular (cir).

Size U.S. 10 (6 mm): 24" cir.

Adjust needle size if necessary to obtain the correct gauge.

Notions

Marker (m); cable needle (cn); tapestry needle.

Gauge

17 sts and 22 rnds = 4" in Lattice patt on larger needle.

Notes

- Cowl is worked in the round and then the cast-on and bind-off edges are sewn together to form a doubled fabric with the ribbing on the inside and the Lattice pattern on the outside.

Cowl

With smaller needle, CO 108 sts. Place marker (pm) and join in the rnd.

Next rnd: K1, *p2, k2; rep from * to last 3 sts, p2, k1.

Rep last rnd until piece measures 2½" from CO.

Change to larger needle and cont in rib patt until piece measures 3½" from CO.

Work Rnds 1-16 of Lattice chart 2 times, working Rnd 11 of chart as foll:

K1, *p1, M1P, p1, k2tog; rep from * to last st, sl last st to right needle, remove m, return slipped st to left needle, k2tog, pm.

Work Rnds 1-9 of chart once more—piece measures about 11" from CO.

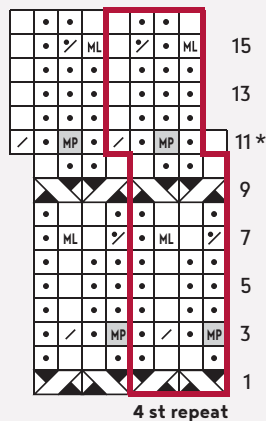
Next rnd: K1, *p2, k2; rep from * to last 3 sts, p2, k1.

Cont in rib patt until piece measures 12" from CO. Change to smaller needle and cont in patt until work measures 18" from CO. BO all sts loosely in patt.

Finishing

Weave in ends. Turn cowl inside out. Fold CO edge up and BO edge down and seam them tog. Turn cowl right side out, wash, and lay flat to dry, adjusting cowl so that lattice panel is centered on outside. Laying a tall glass in the center of the cowl to separate the sides will help expedite the drying of the thick layers.

LATTICE



* Work as given in directions

- knit
- purl
- k2tog
- p2tog
- LLI
- M1 pwise
- sl 1 st onto cn, hold in back, k1, p1 from cn
- sl 1 st onto cn, hold in front, p1, k1 from cn
- pattern repeat





zipper cowl

Ashley Rao

Finished Size

Circumference: 44".

Height: 12¼".

Yarn

Worsted weight (#4 medium).

Shown here: Blue Sky Alpacas Worsted Hand Dyes (50% royal alpaca, 50% Merino wool; 100 yd [91 m]/3½ oz [100 g]); #2015 putty (MC), 4 skeins; #2012 cranberry (CC), 1 skein.

Needles

Size U.S. 7 (4.5 mm): 40" circular (cir).

Size U.S. 9 (5.5 mm): 40" cir.

Adjust needle size if necessary to obtain the correct gauge.

Notions

Marker (m); tapestry needle.

Gauge

12 sts and 36 rnds = 4" in Fisherman's Rib 1 on smaller needle.

STITCH GUIDE

Knit 1 below (k1B)

Knit into center of st below next st on left needle, drop st from left needle.

Purl 1 below (p1B)

Purl into center of st below next st on left needle, drop st from left needle.

Fisherman's Rib I (even number of sts)

Rnd 1: *P1B (see Stitch Guide), k1; rep from * to end.

Rnd 2: *P1, k1B (see Stitch Guide); rep from * to end.

Rep Rnds 1 and 2 for patt.

Fisherman's Rib II (even number of sts)

Rnd 1: With CC, *p1B, k1; rep from * to end.

Rnd 2: With MC, *p1, k1B; rep from * to end.

Rep Rnds 1 and 2 for patt.

Fisherman's Rib III (even number of sts)

Rnd 1: With MC, *k1B, p1; rep from * to end.

Rnd 2: With CC, *k1, p1B; rep from * to end.

Rep Rnds 1 and 2 for patt.

Fisherman's Rib IV (even number of sts)

Rnd 1: *K1B, p1; rep from * to end.

Rnd 2: *K1, p1B; rep from * to end.

Rep Rnds 1 and 2 for patt.

Cowl

ROLLED EDGE

With MC and larger needle, CO 154 sts. Place marker (pm) and join in the rnd.

Knit 3 rnds. Change to smaller needle.

Dec rnd: *[P1, k1] 2 times, p1, ssk; rep from * around—132 sts rem.

Work Rnds 1 and 2 of Fisherman's Rib I (see Stitch Guide for all patts) 16 times.



Work Rnds 1 and 2 of Fisherman's Rib II 9 times, then work Rnd 1 once more.

Next rnd: With CC, *k1, p1; rep from * to end.

Work Rnds 1 and 2 of Fisherman's Rib III 9 times.

Break CC and cont with MC only.

Work Rnds 1 and 2 of Fisherman's Rib IV 16 times, then work Rnd 1 once more.

Change to larger needle.

ROLLED EDGE

Next rnd: *K5, k1f&b; rep from * around—154 sts.

Knit 3 rnds.

BO all sts.

Finishing

Weave in ends. Block.



blackcomb cowl

Holli Yeoh

Finished Size

58" in circumference and 14" tall.

Yarn

Chunky weight (#5 bulky).

Shown here: Miss Babs K2 (100% Merino wool; 240 yd [219 m]/204 g); blackwatch, 3 skeins.

Needles

Size U.S. 10½ (7 mm); straight.

Adjust needle size if necessary to obtain the correct gauge.

Notions

Spare smaller needle for three-needle BO; tapestry needle.

Gauge

13½ sts and 12 rows = 4" in
Double Garter st, blocked.

Notes

- This cowl is knit in two stages. After the first panel is complete, stitches are picked up along one edge for the second panel.
- This cowl begins with a double-wrap long-tail CO (see Stitch Guide), which is very similar to the standard long-tail cast-on and requires a familiarity with this method. The yarn is wrapped twice around the needle, creating a Double Wrap for each stitch.
- The edges are joined by working modified three-needle bind-off with picked up selvedge stitches on the back needle. Alternately, simply bind off and then seam the two ends together.

STITCH GUIDE

Double-Wrap Long-Tail CO

Beg with a slipknot on the right needle. Set your yarn and hand position as for the long-tail CO. *Come up through loop on thumb as usual, catch strand around index finger and wrap yarn twice around the needle, go back down through loop on thumb and complete stitch as for long-tail CO; rep from * to desired number of sts. The initial slipknot counts as 1 st and each Double-Wrapped st counts as 1 st.

Double Garter St (odd number of sts)

Row 1: K1 into first wrap of Double-Wrap st, leaving 2nd wrap on left needle, *k2tog (rem wrap of first st with first wrap of next st), wrapping yarn twice around right needle; rep from * to end of row.

Rep Row 1 every row for Double Garter St patt.

Cowl

WORK FIRST PANEL

Using the double-wrap long-tail method (see Stitch Guide), CO 95 sts.

Beg with a WS row, work Double Garter St (see Stitch Guide) until piece measures 14" from CO, ending with a RS row.

Loosely BO as foll:

BO row: (WS) K1, *K2tog (rem wrap of previous st with first wrap of next st), pass first st on right needle over 2nd st and off needle; rep from * to end.

WORK SECOND PANEL

With first half, RS facing, beg in lower right corner, pick up and knit 1 st, then, wrapping yarn twice around the needle, pick up and knit 46 sts along right edge—47 sts; 1 single st, 46 double-wrap sts.

Work Double Garter st until cowl measures 58" from edge of first half, ending with a RS row.

JOIN ENDS

With spare needle, WS of first half facing, and entering st from back to front, pick up but do not knit 47 sts evenly along left edge.

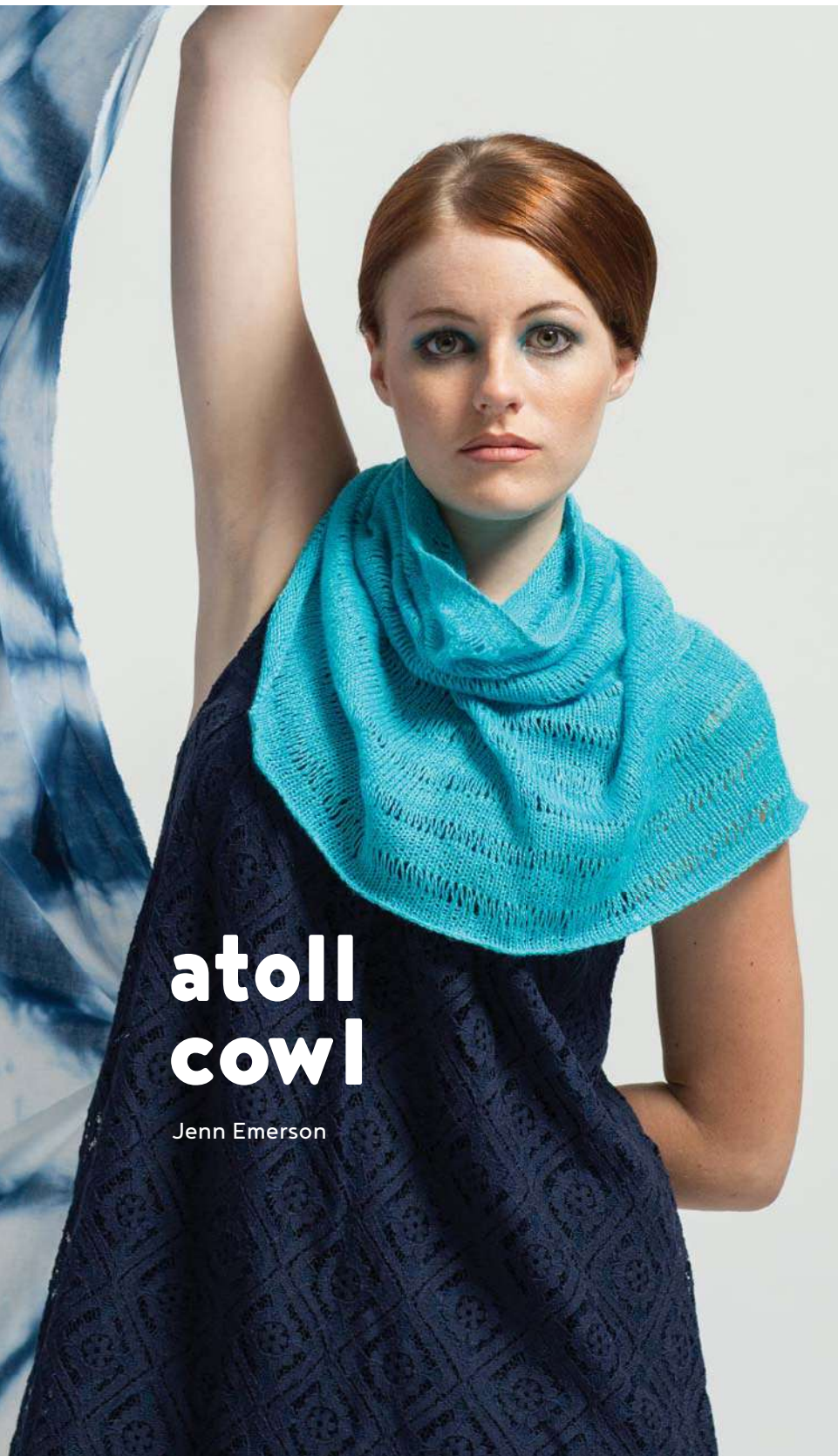
With RS tog and second half in front, join pieces as foll:

Joining row: (WS) K2tog (first wrap of st on front needle with first st on back needle), *k3tog (rem wrap of previous st and first wrap of next st on front needle with next st on back needle), pass first st on right needle over 2nd st and off needle; rep from * to end.

Finishing

Block lightly to measurements. Weave in ends.





atoll cowl

Jenn Emerson

Finished Size

Circumference at top: 19".

Circumference at bottom: 34¾".

Height: 17¾".

Yarn

Lace weight (#0 lace).

Shown here: Jade Sapphire Khata (50% yak, 50% silk; 700 yd [640 m]/100 g); #K3 heavenly lake, 1 skein.

Needles

Size U.S. 5 (3.75 mm): 16" and 24" circular (cir) needles.

Adjust needle size if necessary to obtain the correct gauge.

Notions

Marker (m); tapestry needle.

Gauge

22 sts and 28 rnds = 4" in patt

Notes

- This cowl is worked in the round from the top down.
- Change to longer circular needle when necessary.

STITCH GUIDE

Elongated Stitch Band:

Rnd 1: *K1, wrapping yarn 3 times around right needle instead of once; rep from * to end.

Rnd 2: *K1, dropping all 3 wraps as st is removed from left needle; rep from * to end.

Cowl

With shorter cir needle (see Notes), CO 104 sts. Place marker (pm) and join in the rnd.

Purl 1 rnd.

Knit 8 rnds.

Work Rnds 1 and 2 of Elongated St Band (see Stitches).

Knit 7 rnds.

Rep last 9 rnds 2 more times.

Work Rnds 1 and 2 of Elongated St Band.

Knit 5 rnds.

Inc rnd: K2, *M1L, k5; rep from * to last 2 sts, M1L, k2—125 sts. Knit 1 rnd.

Work Rnds 1 and 2 of Elongated St Band.

Knit 7 rnds.

Rep last 9 rnds once more.

Work Rnds 1 and 2 of Elongated St Band.

Knit 6 rnds.

Inc rnd: K2, *M1L, k6; rep from * to last 3 sts, M1L, k3—146 sts.

Work Rnds 1 and 2 of Elongated St Band.

Knit 7 rnds.

Work Rnds 1 and 2 of Elongated St Band.

Knit 6 rnds.

Inc rnd: K3, *M1L, k3; rep from * to last 2 sts, M1L, k2—194 sts.

Work Rnds 1 and 2 of Elongated St Band.

Knit 7 rnds.



Rep last 9 rnds 3 more times.

BO all sts as foll:

K1, *transfer 1 st from right needle to left needle, k2tog tbl; rep from * to end.

Finishing

Weave in ends. Block to measurements.



snowflake cowl

Jesie Ostermiller

Finished Size

Circumference: 50¼".

Width: 8¾".

Yarn

Fingering weight
(#1 super fine).

Shown here: The Fibre Company Cumbria Fingering (60% Merino wool, 30% brown masham wool, 10% mohair; 328 yd [300 m]/3½ oz [100 g]); #48 derwentwater (dark blue; MC), 3 skeins; #01 scafell pike (gray; CC), 1 skein.

Needles

Size U.S. 3 (3.25 mm);
16" circular (cir).

Adjust needle size if necessary to obtain the correct gauge.

Notions

Marker (m); removable m; size D/3 (3.25 mm) crochet hook; waste yarn for provisional CO and to be used as a stitch holder; spare size U.S. 3 (3.25 mm) or smaller 16" cir needle for grafting; tapestry needle.

Gauge

25 sts and 28 rnds = 4" in
charted patt.

Notes

- This cowl begins with a crochet chain provisional cast-on and is worked in the round to form a long tube; the ends of the tube are grafted together using the circular grafting method.
- The circular grafting method (see page 77) is designed specifically for invisibly joining two pieces that have been worked in the round. For the circular grafting method to work best, it is important to start with a provisional cast-on (such as the crochet chain provisional method) that results in a single row of working yarn stitches.

Cowl

With MC and using the crochet chain provisional method (see Notes), leaving an 8" tail of MC, CO 110 sts. Place marker (pm) and join in the rnd.

*Work Rnds 1-10 of Lice chart 7 times, then work Rnds 1-8 once more.

Work Rnds 1-37 of Snowflakes chart.

With MC, knit 2 rnds.

Rep from * once more.

Work Rnds 1-10 of Lice chart 7 times, then work Rnds 1-8 once more.

Work Rnds 1-37 of Snowflakes chart.

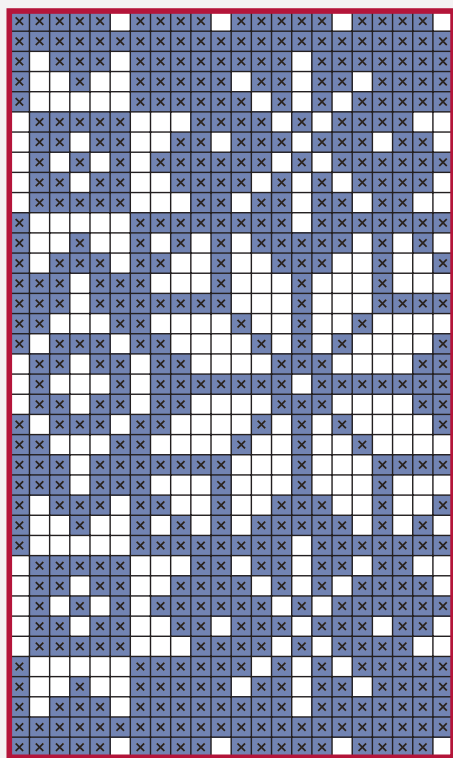
Break yarns, leaving a 2-yd tail of MC for grafting. Place sts on waste yarn holder.

Finishing

Turn tube WS out and weave in ends (except CO and grafting tails), then turn tube RS out. Block.

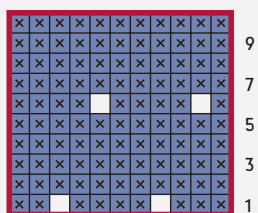


SNOWFLAKES



22-st rep

LICE



11-st rep

- MC
- CC
- pattern repeat

CIRCULAR GRAFTING

Place CO sts onto spare cir needle as foll:

Undo just enough of waste yarn chain to release CO tail. With CO tail threaded on a tapestry needle, create a temporary loop by drawing tail from front to back through same loop from which it's emerging (**Figure 1**).

Gently pull tail until loop is same size as other CO sts. Place a removable m in row above this newly made st (this st is marked by a dot in the illustration and will come into play at the end of the grafting). Beg with this newly made loop, place CO sts onto spare cir needle, removing chain as you go—110 CO sts on needle.

Transfer live sts from waste yarn holder to working needle. Hold the 2 needles tog, needle holding live sts and grafting yarn in front and needle holding CO sts in back, making sure tube isn't twisted. Thread yarn from front needle onto tapestry needle and graft 109 sts in St st—1 st rem to be grafted.

Draw grafting yarn through after last step (**Figure 2**). Place a removable m in st on each needle (other 2 sts marked by dots in illustration) and remove sts from needles. Remove CO tail from st marked with removable m at beg of grafting.

Graft last st in St st (**Figure 3**) by drawing yarn through sts as foll:

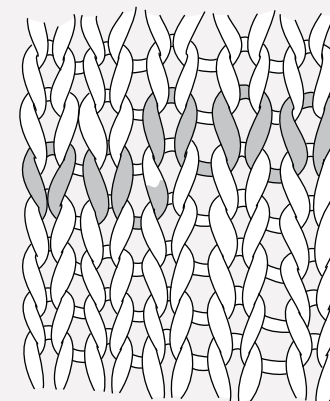
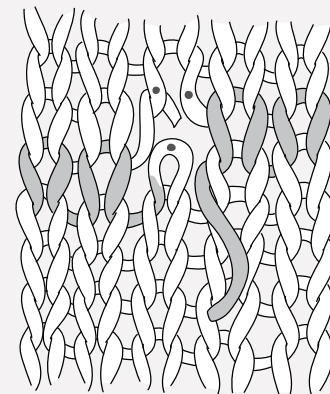
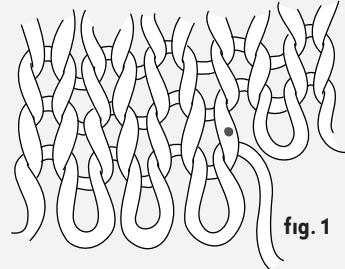
Step 1: Pwise (from WS to RS) through st from front needle.

Step 2: Pwise (from RS to WS) through st from back needle.

Step 3: Kwise (from WS to RS) through marked st from beg of grafting.

Step 4: Kwise (from RS to WS) through st from front needle.

To weave in ends, twist tails once around each other, then take each tail to opposite side of gap and run tails through to inside of tube, giving each tail a tug to make sure gap is closed.





loveland cowl

Laura Reinbach

Finished Size

Circumference: 23".

Height: 9¼".

Yarn

Fingering weight (#1 super fine).

Shown here: Wonderland Yarns Cheshire Cat (100% superwash Merino wool; 512 yd (468 m)/113 g); #00 white rabbit (MC), 1 skein.

Wonderland Yarns Cheshire Cat Miniskein pack (100% superwash Merino wool; 128 yd (117 m)/28 g per skein; 5 skeins per pack); #14 cats in the coffee (browns; CC1-CC5), 1 set of 5 skeins.

Needles

Size U.S. 3 (3.25 mm): 24" circular (cir).

Adjust needle size if necessary to obtain the correct gauge.

Notions

Marker (m); spare 24" cir needle, same size or smaller than main needle; tapestry needle.

Gauge

27 sts and 36 rnds = 4" in St st.

Notes

- This cowl is worked in the round, then the ends are grafted together using Kitchener stitch.
- The chart is worked using the stranded method.
- Always pick up the first color over the second and pick up the second color from under the first; this will prevent tangling.
- Keep floats loose. For floats longer than 5 stitches, twist yarns together on wrong side of work.
- Break yarn at each color change.
- If necessary, use a larger needle for the charted rounds to maintain gauge.

Cowl

With CC1 and using a provisional method, CO 156 sts. Place marker and join in the rnd.

Knit 6 rnds.

With CC2 (see Notes), knit 7 rnds.

With CC3, knit 7 rnds.

With CC4, knit 7 rnds.

With CC5, knit 13 rnds.

With CC4, knit 7 rnds.

With CC3, knit 7 rnds.

With CC2, knit 7 rnds.

With CC1, knit 7 rnds.

With MC, knit 7 rnds.

Purl 1 rnd for turning ridge.

Work Rnds 1-83 of Colorwork chart.

With MC, purl 1 rnd for turning ridge.

Knit 6 rnds.

Break yarn, leaving a 3½ yd tail for grafting.

Finishing

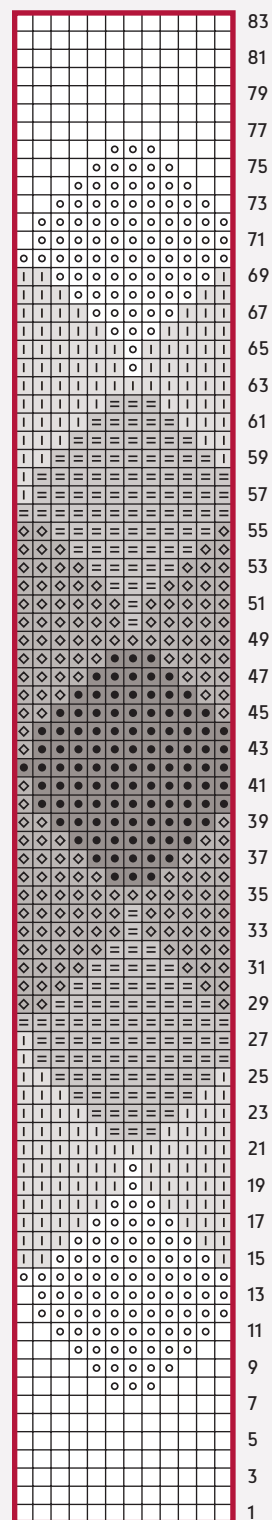
Place sts on waste yarn holder. Block. Weave in all ends except for grafting tail. Return sts to needle.

Remove waste yarn from provisional CO and place 156 CO sts onto spare cir needle. Fold cowl at turning ridges with WS tog. With tail threaded on a tapestry needle, graft sts using Kitchener st.



- MC
- CC1
- CC2
- CC3
- CC4
- CC5
- pattern repeat

COLORWORK



12-st rep



trapper cowl

Lisa R. Myers

Finished Size

Circumference: 28".

Height: 9".

Yarn

Worsted weight (#4 medium).

Shown here: Manos del Uruguay Maxima (100% extrafine Merino wool: 219 yd [200 m]/3½ oz [100 g]): #M2540 kohI (gray, A) and #M2110 zinnia (red, B), 1 skein each.

Needles

Size U.S. 6 (4 mm); 24" circular (cir).

Adjust needle size if necessary to obtain the correct gauge.

Notions

Marker (m); tapestry needle.

Gauge

30 st-pairs and 25 rnds = 4" in Double Knitting patt.

Notes

- This cowl is worked in the round using a two-color double-knitting technique. In double knitting, two layers of fabric are created simultaneously. The outer layer is worked with the knit side facing you and reflects the color assignments shown on the chart. The inner layer is worked with the purl side facing you and with the chart colors reversed.
- Each square on the chart represents a pair of stitches: a knit stitch and a purl stitch. For each square on the chart, knit with the color shown on the chart and purl with the other color.
- The term "st-pair" refers to a knit/purl pair of stitches.
- Before knitting a stitch, bring both yarns to the back of the work; before purling a stitch, bring both yarns to the front of the work.



hoxey cowl

Meghan Huber

Finished Size

Circumference: 22¼".

Height: 9½".

Yarn

Super bulky weight
(#6 super bulky).

Shown here: Plymouth Yarn Baby Alpaca Grande (100% baby alpaca; 110 yd [101 m]/3½ oz [100 g]): #100 natural (MC), 1 skein.

Plymouth Yarn Baby Alpaca Grande Hand Dye (100% baby alpaca; 110 yd [101 m]/3½ oz [100 g]): #39 red/green/gray variegated (CC), 1 skein.

Needles

Size U.S. 10 (6 mm): 16" circular (cir).

Adjust needle size if necessary to obtain the correct gauge.

Notions

Marker (m); tapestry needle.

Gauge

13 sts and 15 rnds = 4" in Two-Color Moss st.

Notes

■ This cowl is worked in the round from the bottom up.

STITCH GUIDE

Two-color Moss stitch (even number of sts)

Rnd 1: *With CC, k1, with MC, k1; rep from * to end.

Rnd 2: *With CC, p1, with MC, k1; rep from * to end.

Rnd 3: *With MC, k1, with CC, k1; rep from * to end.

Rnd 4: *With MC, k1, with CC, p1; rep from * to end.

Rep Rnds 1-4 for patt.

Cowl

With MC, CO 72 sts. Place marker and join in the rnd.

Purl 1 rnd.

Work in Two-color Moss st (see Stitch Guide) for 32 rnds.

Break CC.

With MC, knit 1 rnd.

Purl 1 rnd.

BO all sts.

Finishing

Weave in ends. Block to measurements.





winter thyme cowl

Moira Engel

Finished Size

Circumference: 43".

Width: 12".

Yarn

DK weight (#3 light).

Shown here: Sweet Fiber Merino wool Twist DK (100% superwash Merino wool; 260 yd [238 m]/4 oz [115 g]); forest, 3 skeins.

Needles

Size U.S. 6 (4 mm): straight and 40" circular (cir).

Adjust needle size if necessary to obtain the correct gauge.

Notions

Marker (m); stitch holder; cable needle (cn); tapestry needle.

Gauge

25 sts and 32 rows = 4" in Bobbles and Waves patt.

Notes

■ This cowl is worked back and forth starting with a provisional cast-on, and then the ends are grafted together in pattern. The edgings are picked up along the side edges and worked in the round.

STITCH GUIDE

Edging bobble

Knit into front, back and front of next st—3 sts; turn, p3; turn, k3; turn, p3; turn, sl 1, k2tog, pss0—returned to 1st.

Cowl

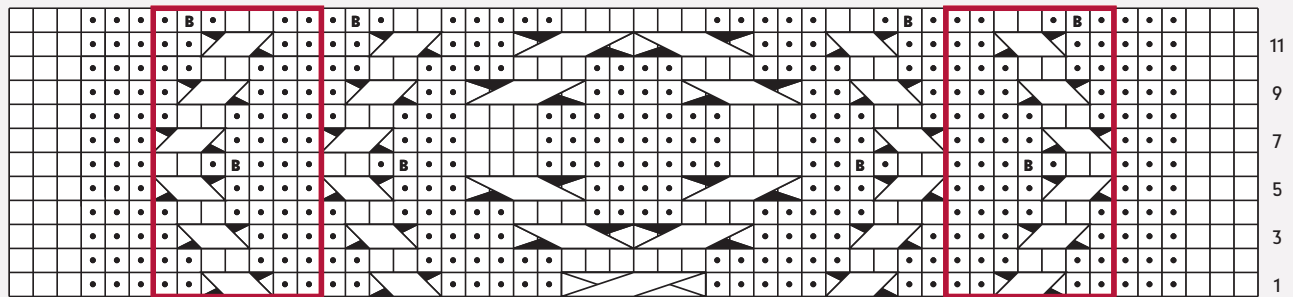
With straight needles and using the crochet chain provisional method, CO 80 sts, leaving a 6" tail.

Work Rows 3–12 of Bobbles and Waves chart once, then rep Rows 1–12 of chart until piece measures about 43" from CO, ending with Row 12.

Break yarn, leaving a 54" tail for grafting. Place sts on holder.









BOBBLES AND WAVES






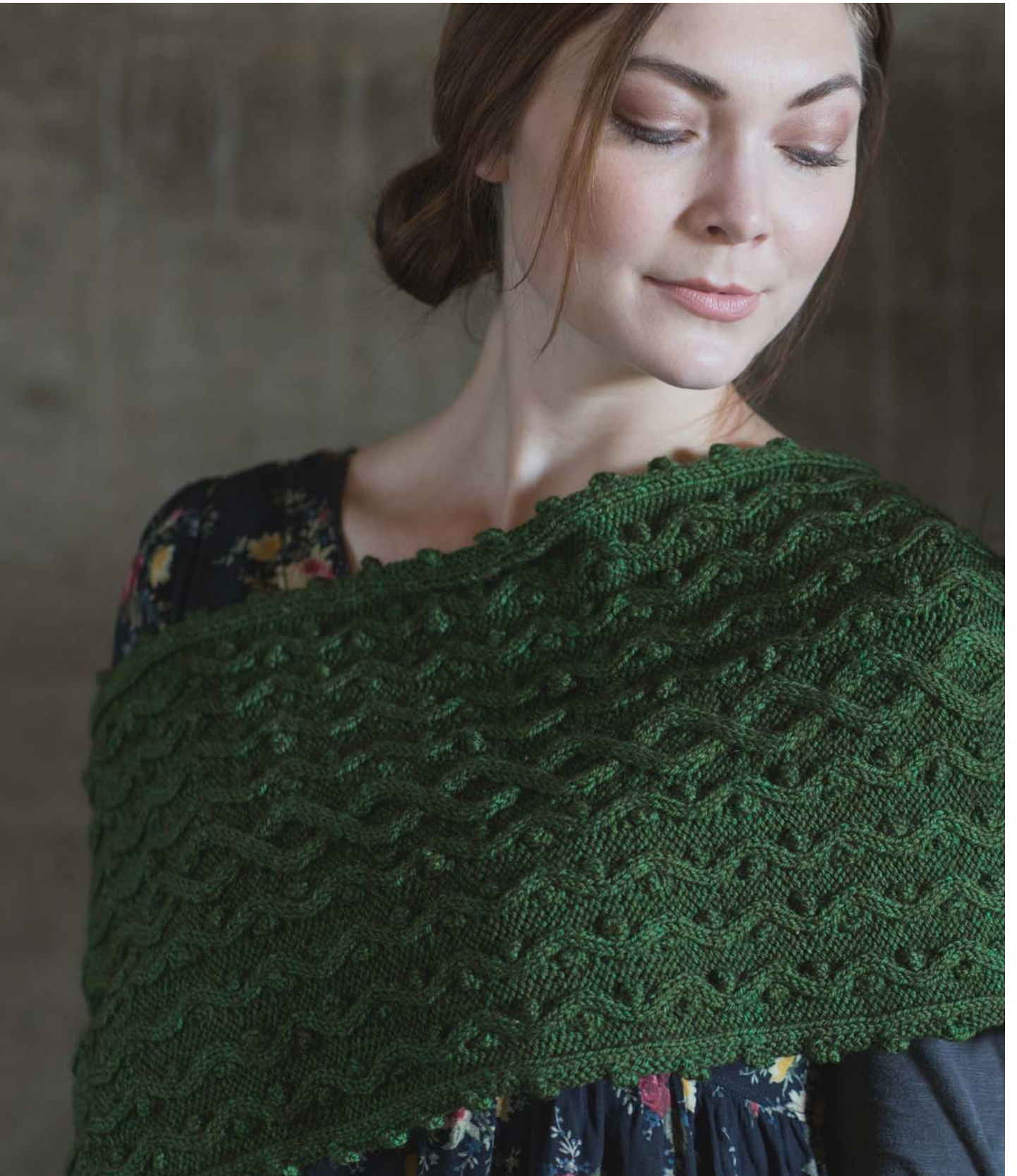
7 st repeat
(work 3 times)

7 st repeat
(work 3 times)

-  k on RS; p on WS
-  p on RS; k on WS
-  purl into front, back and front of next st–3 sts; turn, k3; turn, p3; turn, k3; turn, sl 1, p2tog, pssso–returned to 1 st

-  sl 1 st onto cn, hold in back, k2, p1 from cn
-  sl 2 sts onto cn, hold in front, p1, k2 from cn
-  sl 2 sts onto cn, hold in back, k3, p2 from cn

-  sl 3 sts onto cn, hold in front, p2, k3 from cn
-  sl 3 sts onto cn, hold in back, k3, k3 from cn
-  pattern repeat



Finishing

Block. Remove waste yarn from provisional CO and place 80 CO sts on needle. With 6" CO tail threaded on a tapestry needle, create an extra st on same needle by wrapping yarn clockwise once around needle and bringing it to WS of work—81 sts.

Return 80 live sts to a 2nd needle and, holding needles parallel with CO sts in back, WS tog, and with grafting tail threaded on a tapestry needle, graft sts in patt, foll grafting chart or written instructions.

Note: *In the written instructions, the sequences appear first, followed by the order in which the sequences are worked.*

SEQUENCE A (knit st on FN, knit st on BN)

Step 1: Pwise through st on FN, leave.

Step 2: Pwise through st on BN, remove.

Step 3: Kwise through next st on BN, leave.

Step 4: Kwise through st on FN, remove.

SEQUENCE B (purl st on FN, purl st on BN)

Step 1: Kwise through st on FN, leave.

Step 2: Kwise through st on BN, remove.

Step 3: Pwise through next st on BN, leave.

Step 4: Pwise through st on FN, remove.

SEQUENCE C (2/1 RPC on FN; 2 knit sts, 1 purl st on BN)

Rearrange 3 sts on FN as foll: Sl 1 st onto tapestry needle and hold in back, remove next 2 sts from FN temporarily and transfer 1 st from tapestry needle back onto FN, then return 2 live sts to FN.

Work Sequence A 2 times, work Sequence B once.

SEQUENCE D (3/3 RC on FN; 6 knit sts on BN)

Rearrange 6 sts on FN as foll: Sl 3 sts onto tapestry needle and hold in back,



remove next 3 sts from FN temporarily and transfer 3 sts from tapestry needle back onto FN, then return 3 live sts to FN.

Work Sequence A 6 times.

SEQUENCE E (2/1 LPC on FN; 1 purl st, 2 knit sts on BN)

Rearrange 3 sts on FN as foll: Sl 2 sts onto tapestry needle and hold in front, remove next st from FN temporarily and transfer 2 sts from tapestry needle back onto FN, then return live st to FN.

Work Sequence B once, work Sequence A 2 times.

GRAFT IN PATT

Work Sequence A 3 times, work Sequence B 3 times, *work Sequence B 2 times, work Sequence C (over 3 sts on each needle) once, work Sequence B 2 times; rep from * 3 more times, work Sequence B 3 times, work Sequence D (over 6 sts on each needle) once, work Sequence B 3 times, **work Sequence B 2 times, work Sequence E (over 3 sts on each needle) once, work Sequence B 2 times; rep from ** 3 more times, work Sequence B 3 times, work Sequence A 3 times.

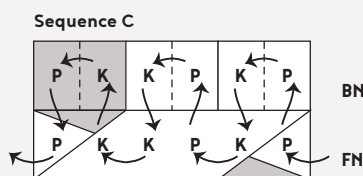
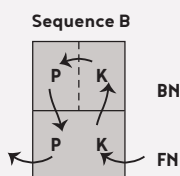
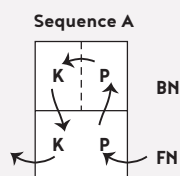
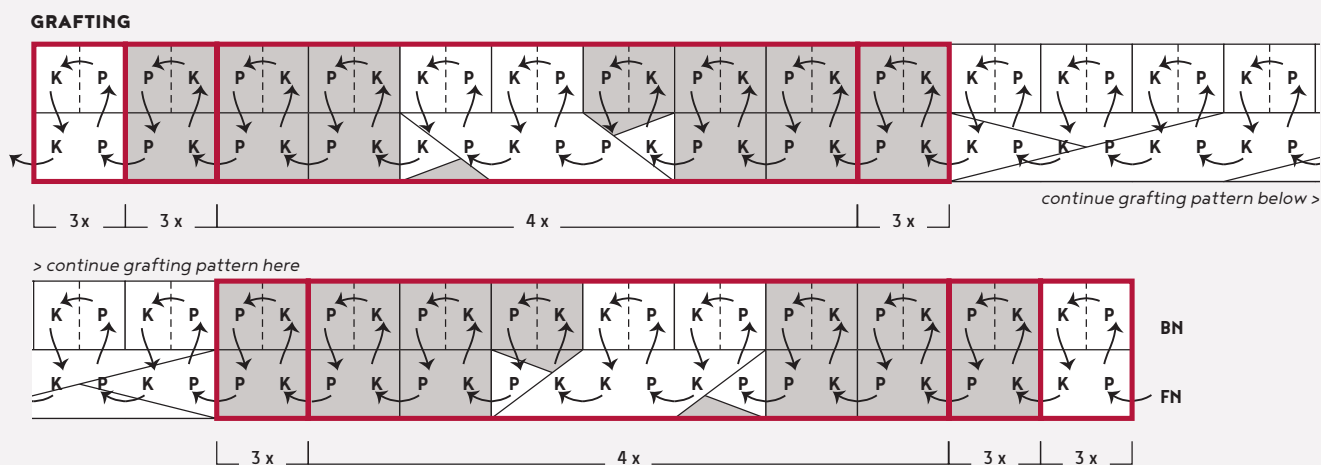
EDGING

With cir needle and RS facing, pick up and knit 228 sts evenly around one edge of cowl. Place marker and join in the rnd.

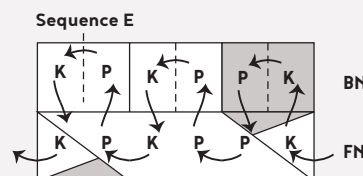
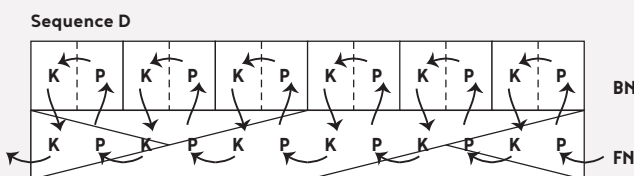
Purl 1 rnd.

BO all sts as foll:

*BO 5 sts pwise, make Edging Bobble (see Stitch Guide) in next st on left needle, then using st rem on right needle after BO, BO bobble pwise; rep from * to end. Fasten off last st. Rep for opposite edge. Weave in ends.



- K** knitwise
- P** purlwise
- FN** front needle
- BN** back needle
- pattern repeat





bear lake cowl

Quenna Lee

Finished Size

Circumference: 45".

Depth: 6½".

Yarn

Worsted weight (#4 medium).

Shown here: Cascade Yarns Eco Cloud (70% undyed Merino wool, 30% un-dyed baby alpaca; 164 yd [150 m]/100 g); #1803 fawn, 3 hanks.

Needles

Size U.S. 15 (10 mm): 40" circular (cir).

Adjust needle size if necessary to obtain the correct gauge.

Notions

Marker (m); tapestry needle.

Gauge

11½ sts and 15 rnds = 4" in charted patt.

Notes

- Work with two strands of yarn held together throughout.



badge cowl

Tanis Gray

Finished Size

Circumference: 40½".

Height: 13½".

Yarn

Bulky weight (#5 bulky).

Shown here: The Fibre Company Tundra (60% baby alpaca, 30% Merino wool, 10% silk; 120 yd [110 m]/100 g); #209 allium, 3 skeins.

Needles

Size U.S. 10 (6 mm): 40" circular (cir).

Adjust needle size if necessary to obtain the correct gauge.

Notions

Markers (m); tapestry needle.

Gauge

13 sts and 22 rnds = 4" in charted patt.

Notes

- This cowl is worked in the round from the bottom up.



Cowl

CO 132 sts. Place marker and join in the rnd.

[Knit 1 rnd, purl 1 rnd] 2 times.

Work Rnds 1-44 of Nordic Star chart once, then work Rnds 1-22 of chart once more.

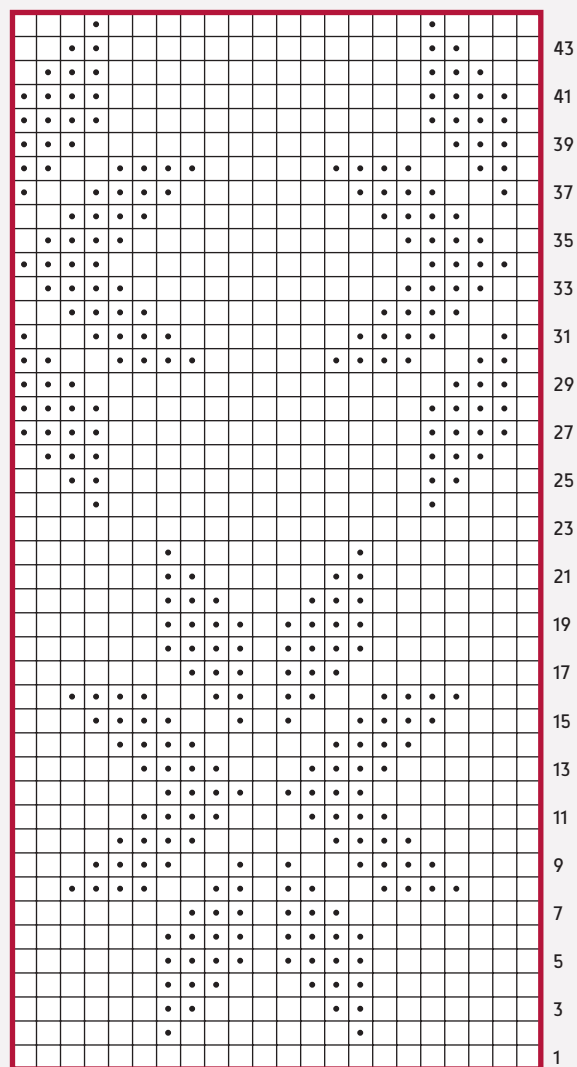
[Knit 1 rnd, purl 1 rnd] 2 times.

BO all sts.

Finishing

Weave in ends. Block to measurements.

NORDIC STAR



22 st repeat

- knit
- purl
- pattern repeat



edora cowl

Yoko Johnston

Finished Size

Circumference: 49".

Width: 16".

Yarn

Laceweight (#0 lace).

Shown here: The Fibre Company Road to China Lace (65% baby alpaca, 15% silk, 10% cashmere, 10% camel; 656 yd [600 m]/100 g): grey pearl, 2 skeins.

Needles

Size U.S. 7 (4.5 mm).

Adjust needle size if necessary to obtain the correct gauge.

Notions

Size G/7 (4.5 mm) crochet hook; stitch holder; waste yarn for provisional CO; tapestry needle.

Gauge

18 sts and 20 rows = 4" in charted patt with two strands held tog, blocked.

Notes

- This cowl is worked back and forth in rows, then the ends are grafted together.
- Work with two strands of yarn held together throughout.

STITCH GUIDE

Knot stitch (worked over 3 sts)

With tip of right needle, pass 3rd st on left needle over first and 2nd sts, then work first and 2nd sts as k1tbl, yo, k1tbl.

Bobble fringe

With RS facing and using the backward-loop method, CO 5 sts, turn; work [k1, yo, k1, yo, k1] into first st, turn; k5, turn; sl 2 pwise wyf, p3tog, p2sso, BO 5 sts—1 st rem on right needle (this st counts as first worked st of next WS row and is not included in instructions).

Cowl

With 2 strands of yarn held tog (see Notes) and using the crochet chain provisional method, CO 39 sts.

Next row: (RS) K1, p1, *k1tbl, p1; rep from * to last st, k1.

Next row: (WS) K2, *p1tbl, k1; rep from * to last st, k1.

Rep last 2 rows until piece measures 7" from CO, ending with a WS row.

INC SECTION 1

Row 1: (RS) K1, M1L, p1, work Knot st over 3 sts (see Stitch Guide), *p1, k1tbl; rep from * to last 6 sts, p1, work Knot st over 3 sts, p1, M1R, k1, work Bobble Fringe (see Stitch Guide)—41 sts.

Row 2: (WS) Not counting first st already on right needle, *p1tbl, k1; rep from * to end.

Row 3: K1, M1L, [work Knot st over 3 sts, p1] 2 times, *k1tbl, p1; rep from * to last 8 sts, work Knot st over 3 sts, p1, work Knot st over 3 sts, M1R, k1—43 sts.

Row 4: K2, *p1tbl, k1; rep from * to last st, k1.

Row 5: K1, M1L, p1, k1tbl, p1, [work Knot st over 3 sts, p1] 2 times, *k1tbl, p1; rep from * to last 11 sts, [work Knot st over 3 sts, p1] 2 times, k1tbl, p1, M1R, k1—45 sts.

Row 6: *K1, p1tbl; rep from * to last st, k1.

Row 7: K1, M1L, k1tbl, p1, [work Knot st over 3 sts, p1] 3 times, *k1tbl, p1; rep from * to last 14 sts, [work Knot st over 3 sts, p1] 3 times, k1tbl, M1R, k1—47 sts.

Row 8: K2, *p1tbl, k1; rep from * to last st, k1.

Row 9: K1, M1L, p1, [work Knot st over 3 sts, p1] 4 times, *k1tbl, p1; rep from * to last 17 sts, [work Knot st over 3 sts, p1] 4 times, M1R, k1, work Bobble Fringe—49 sts.

Row 10: *P1tbl, k1; rep from * to end.

Row 11: K1, M1L, [work Knot st over 3 sts, p1] 5 times, [k1tbl, p1] 4 times, [work Knot st over 3 sts, p1] 4 times, work Knot st over 3 sts, M1R, k1—51 sts.

Row 12: K2, *p1tbl, k1; rep from * to last st, k1.

Row 13: K1, M1L, p1, k1tbl, p1, [work Knot st over 3 sts, p1] 5 times, [k1tbl, p1] 2 times, [work Knot st over 3 sts, p1] 5 times, k1tbl, p1, M1R, k1—53 sts.

Row 14: *K1, p1tbl; rep from * to last st, k1.

Row 15: K1, M1L, k1tbl, p1, *work Knot st over 3 sts, p1; rep from * to last 2 sts, k1tbl, M1R, k1—55 sts.

Row 16: K2, *p1tbl, k1; rep from * to last st, k1.

INC SECTION 2

Row 1: (RS) K1, M1L, p1, *work Knot st over 3 sts, p1; rep from * to last st, M1R, k1, work Bobble Fringe—2 sts inc'd.

Row 2: (WS) *P1tbl, k1; rep from * to end.

Row 3: K1, M1L, *work Knot st over 3 sts, p1; rep from * to last 4 sts, work Knot st over 3 sts, M1R, k1—2 sts inc'd.

Row 4: K2, *p1tbl, k1; rep from * to last st, k1.

Row 5: K1, M1L, p1, k1tbl, p1, *work Knot st over 3 sts, p1; rep from * to last 3 sts, k1tbl, p1, M1R, k1—2 sts inc'd.

Row 6: K1, *p1tbl, k1; rep from * to end.

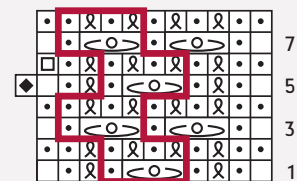
Row 7: K1, M1L, k1tbl, p1, *work Knot st over 3 sts, p1; rep from * to last 2 sts, k1tbl, M1R, k1—2 sts inc'd.

Row 8: K2, *p1tbl, k1; rep from * to last st, k1.

Rep Rows 1-8 three more times, then work Rows 1-4 once more—91 sts.



TWISTED MESH



4-st rep

- k on RS; p on WS
- p on RS; k on WS
- k k1tbl on RS; p1tbl on WS
- ◊ bobble fringe (see Stitch Guide)
- st on right needle after bobble fringe
- pattern repeat
- ◁○▷ knot stitch (see Stitch Guide)

BODY

Work Rows 1-8 of Twisted Mesh chart 11 times, working Bobble Fringe at end of each Row 5 as shown, then work Rows 1 and 2 of chart once more.

DEC SECTION 1

Row 1: (RS) K2tog, *work Knot st over 3 sts, p1; rep from * to last 5 sts, work Knot st over 3 sts, ssk—89 sts rem.

Row 2: (WS) K1, *p1tbl, k1; rep from * to end.

Row 3: K2tog, p1, *work Knot st over 3 sts, p1; rep from * to last 2 sts, ssk, work Bobble Fringe—2 sts dec'd.

Row 4: K1, *p1tbl, k1; rep from * to last st, k1.

Row 5: K2tog, k1tbl, p1, *work Knot st over 3 sts, p1; rep from * to last 3 sts, k1tbl, ssk—2 sts dec'd.

Row 6: K1, *p1tbl, k1; rep from * to end.

Row 7: K2tog, p1, k1tbl, p1, *work Knot st over 3 sts, p1; rep from * to last 4 sts, k1tbl, p1, ssk—2 sts dec'd.

Row 8: K2, *p1tbl, k1; rep from * to last st, k1.

Row 9: K2tog, *work Knot st over 3 sts, p1; rep from * to last 5 sts, work Knot st over 3 sts, ssk—2 sts dec'd.

Row 10: K1, *p1tbl, k1; rep from * to end.

Rep Rows 3–10 three more times, then work Rows 3–6 once more—53 sts rem.

DEC SECTION 2

Row 1: (RS) K2tog, p1, k1tbl, p1, [work Knot st over 3 sts, p1] 5 times, [k1tbl, p1] 2 times, [work Knot st over 3 sts, p1] 5 times, k1tbl, p1, ssk—51 sts rem.

Row 2: K2, *p1tbl, k1; rep from * to last st, k1.

Row 3: K2tog, [work Knot st over 3 sts, p1] 5 times, [k1tbl, p1] 4 times, [work Knot st over 3 sts, p1] 4 times, work Knot st over 3 sts, ssk—49 sts rem.

Row 4: K1, *p1tbl, k1; rep from * to end.

Row 5: K2tog, p1, [work Knot st over 3 sts, p1] 4 times, [k1tbl, p1] 6 times, [work Knot st over 3 sts, p1] 4 times, ssk, work Bobble Fringe—47 sts rem.

Row 6: K1, *p1tbl, k1; rep from * to last st, k1.

Row 7: K2tog, k1tbl, p1, [work Knot st over 3 sts, p1] 3 times, [k1tbl, p1] 8 times, [work Knot st over 3 sts, p1] 3 times, k1tbl, ssk—45 sts rem.

Row 8: K1, *p1tbl, k1; rep from * to end.

Row 9: K2tog, p1, k1tbl, p1, [work Knot st over 3 sts, p1] 2 times, [k1tbl, p1] 10 times, [work Knot st over 3 sts, p1] 2 times, k1tbl, p1, ssk—43 sts rem.

Row 10: K2, *p1tbl, k1; rep from * to last st, k1.

Row 11: K2tog, [work Knot st over 3 sts, p1] 2 times, [k1tbl, p1] 12 times, work Knot st over 3 sts, p1, work Knot st over 3 sts, ssk—41 sts rem.

Row 12: K1, *p1tbl, k1; rep from * to end.

Row 13: K2tog, p1, work Knot st over 3 sts, p1, *k1tbl, p1; rep from * to last 6 sts, work Knot st over 3 sts, p1, ssk, work Bobble Fringe—39 sts rem.

Row 14: K1, *p1tbl, k1; rep from * to last st, k1.



Next row: (RS) K1, p1, *k1tbl, p1; rep from * to last st, k1.

Next row: (WS) K2, *p1tbl, k1; rep from * to last st, k1. Rep last 2 rows until ribbed section measures 7", ending with a RS row.

Next row: (WS) Purl.

Place sts on holder. Break yarn, leaving a 36" tail for grafting.

Finishing

Block piece to 19½" wide at widest point (not including fringe) and 52" long; piece will relax to about 16" wide and 49" long after blocking. Remove waste yarn from provisional CO and place 39 sts onto needle. Place 39 held sts on 2nd needle. Hold needles parallel with WS tog and both needle points facing to the right. Thread grafting tail onto a tapestry needle and graft sts using Kitchener st. Weave in ends.





edmonia shawl

Anne Hanson

Finished Size

Width: 84".

Height: 38".

Yarn

Fingering weight
(#1 super fine).

Shown here: Bare Naked
Wools Stone Soup Fingering
(80% wool [rambouillet,
lincoln, columbia, navajo-
churro], 15% alpaca, 5%
combination of tencel,
bamboo, yak, and silk; 450
yd [411 m]/3.8 oz [108 g]);
granite, 2 skeins (see Notes).

Needles

Size U.S. 7 (4.5 mm); 24"
circular (cir).

*Adjust needle size if necessary
to obtain the correct gauge.*

Notions

Markers (m); tapestry needle.

Gauge

18 sts and 27 rows =
4" in St st.

16 sts and 27 rows =
4" in Eyelet Lace patt.

14 sts and 26 rows = 4" in
Openwork Mesh patt.

Notes

- This shawl is worked from side to side, starting at the left tip.
- The sample used all of 2 skeins of yarn. Consider purchasing an extra skein as insurance.
- A circular needle is used to accommodate the large number of stitches.

Shawl

CO 6 sts, place marker (pm), CO 1 st, pm,
CO 3 sts—10 sts: 3 right border sts, 1 main
panel st, 6 left edge sts.

Work Rows 1-36 of Chart A—28 sts: 3
right border sts, 19 main panel sts, 6 left
edge sts.

Work Rows 1-12 of Chart B 11 times—94
sts: 3 right border sts, 85 main panel sts,
6 left edge sts.

Work Rows 1-12 of Chart C, working
6-st rep 11 times, and working 1-st rep 3
times—100 sts: 3 right border sts, 91 main
panel sts, 6 left edge sts.

Work Rows 1-12 of Chart C once more,
working 6-st rep 11 times, and working
1-st rep 9 times—106 sts: 3 right border
sts, 97 main panel sts, 6 left edge sts.

Work Rows 1-12 of Chart D, working
6-st rep 11 times, and working 1-st rep
15 times—112 sts: 3 right border sts, 103
main panel sts, 6 left edge sts.

Work Rows 1-12 of Chart E, working 2-st
rep 6 times, 6-st rep 11 times, and 1-st rep
12 times—118 sts: 3 right border sts, 109
main panel sts, 6 left edge sts.

Work Rows 1-12 of Chart E once more,
working 2-st rep 12 times, 6-st rep 11
times, and 1-st rep 6 times—124 sts: 3
right border sts, 115 main panel sts, 6 left
edge sts.

Work Rows 1-12 of Chart F 12 times,
working 2-st rep 18 times in first chart
rep and inc by 6 times for each foll rep
(24 times in 2nd rep, 30 times in 3rd rep,
etc, ending with 84 times in 12th rep),
and working 6-st rep 11 times in first chart
rep and dec by 1 time for each foll rep (10
times in 2nd rep, 9 times in 3rd rep, etc,
ending with 0 times in 12th rep)—196 sts:
3 right border sts, 187 main panel sts, 6
left edge sts.

Work Rows 1-12 of Chart G—202 sts: 3
right border sts, 193 main panel sts, 6 left
edge sts.



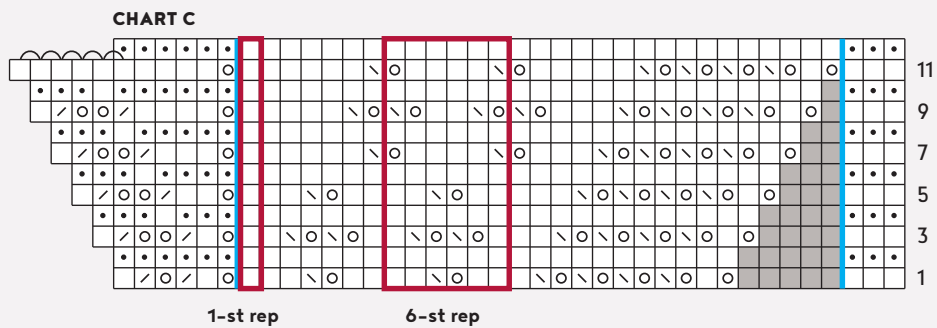
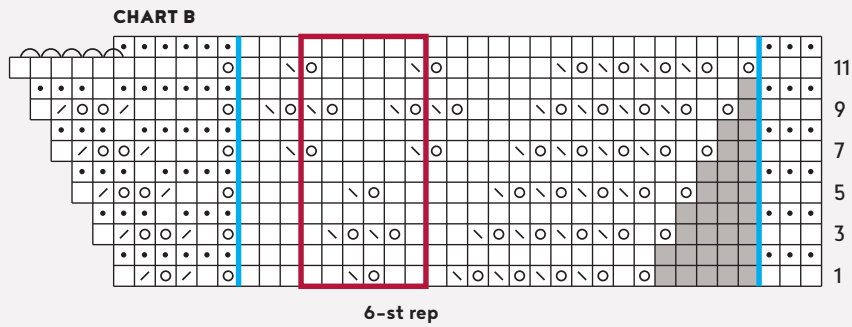
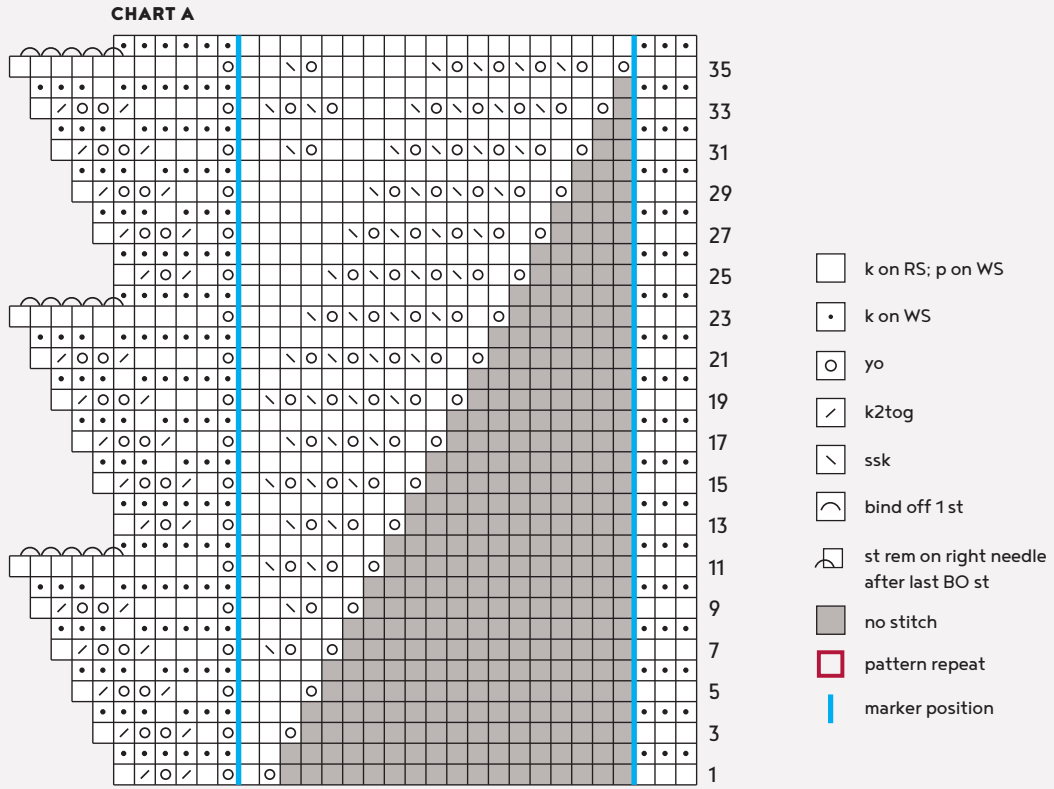


CHART D

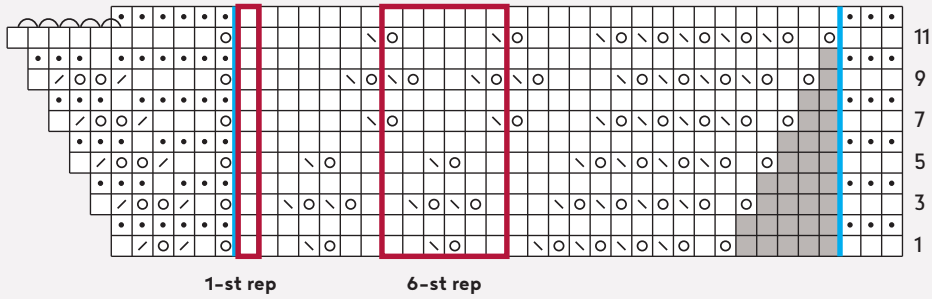


CHART E

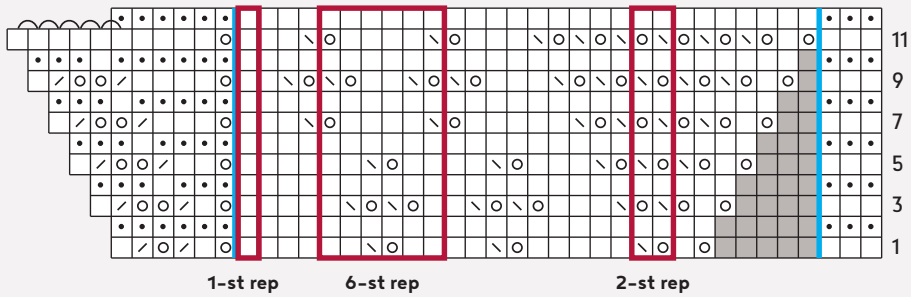


CHART F

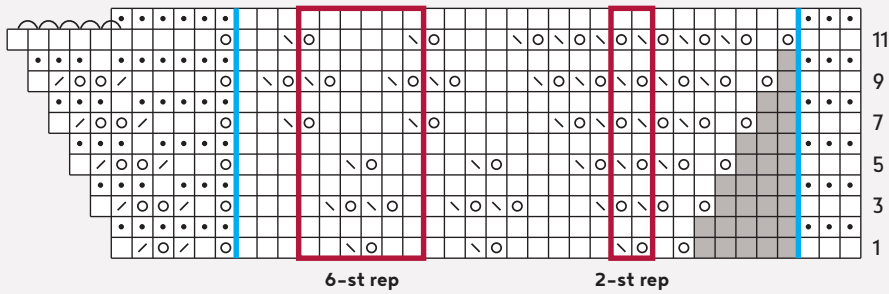
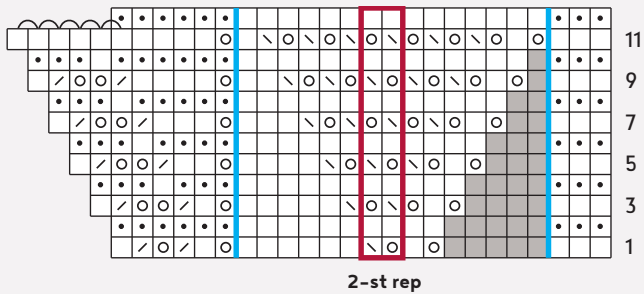
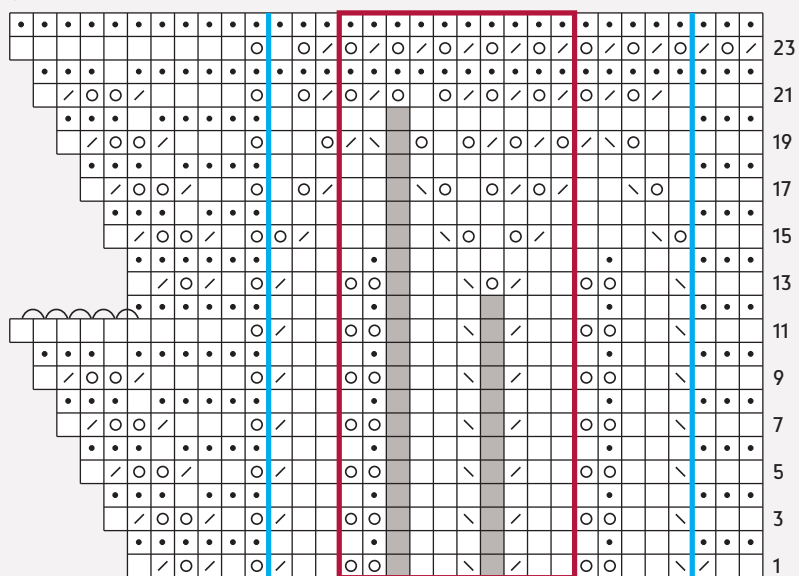


CHART G



- k on RS; p on WS
- k on WS
- o yo
- / k2tog
- \ ssk
- ⌋ bind off 1 st
- ⌋ st rem on right needle after last BO st
- no stitch
- pattern repeat
- marker position

CHART H



8-st to 10-st rep

Work Rows 1-24 of Chart H—252 sts: 3 right border sts, 238 main panel sts, 11 left edge sts.

Loosely BO all sts.

Finishing

Weave in ends. Block to measurements. Soak shawl in cool water with wool soap for approximately one hour or until fiber is fully saturated. Stretch and pin piece to finished dimensions (use blocking wires if available) and allow to dry thoroughly in place before unpinning.





hanshi wrap

Beatrice Perron Dahlen

Finished Size

Width: 72¾".

Depth: 12".

Yarn

Fingering weight (#1 super fine).

Shown here: Shibui Knits Staccato (70% superwash Merino wool, 30% silk; 191 yd [175 m]/1¾ oz [50 g]): #2004 ivory (MC), 4 skeins (see Notes); #2001 abyss (CC), 1 skein.

Needles

Size U.S. 4 (3.5 mm): 32" circular (cir).

Adjust needle size if necessary to obtain the correct gauge.

Notions

Tapestry needle.

Gauge

23 sts and 42 rows = 4" in Garter st.

Notes

- This wrap is worked on the bias. The contrasting color sections are worked with short-rows.
- This wrap used almost all of four skeins of the main color. Consider purchasing an extra skein as insurance.
- It may be helpful to mark the right side of the work.
- A circular needle is used to accommodate the large number of stitches.

STITCH GUIDE

Bias Pattern

Row 1: (WS) Knit.

Row 2: (RS) K1, M1, knit to last 3 sts, k2tog, k1.

Rep Rows 1 and 2 for patt.

Wrap

With MC and using the long-tail method, CO 360 sts. Do not join.

Work Rows 1 and 2 of Bias patt (see Stitch Guide) 14 times, then work Row 1 once more.

SHORT-ROW SECTION

Short-row 1: (RS) With MC, work 230 sts (inc'd to 231 sts) in patt, *drop but do not break MC, join CC, k100, wrap next st, turn.

Short-row 2: (WS) Knit to last 10 sts of CC section, wrap next st, turn.

Short-row 3: Knit to 10 sts before wrapped st, wrap next st, turn.

Rep Short-row 3 two more times.

Next row: (WS) Knit to end of CC section, wrap next st, turn. Break CC.

With RS facing, pick up MC and work in patt to end of row.

Work Rows 1 and 2 of Bias patt 14 times, then work Row 1 once more.*



SHORT-ROW SECTION

Short-row 1: (RS) With MC, work 130 sts (inc'd to 131 sts) in patt, work from * to * of first short-row section.

SHORT-ROW SECTION

Short-row 1: (RS) With MC, work 30 sts (inc'd to 31 sts) in patt, work from * to * of first short-row section.

Loosely BO all sts.

Finishing

Weave in ends. Block to measurements.



arrowhead stole

Courtney Spainhower

Finished Size

Width: 9¾ (18)".

Length: 51 (116)".

Stole shown is 18" x 116".

Yarn

Fingering weight
(#1 super fine).

Shown here: Shibui Linen
(100% linen; 246 yd [225
m]/1¾ oz [50 g]); 2022
mineral, 3 (5) skeins.

Needles

Size U.S. 5 (3.75 mm): straight.

*Adjust needle size if necessary
to obtain the correct gauge.*

Notions

Markers (m); removable
marker (optional); tapestry
needle.

Gauge

32 sts and 34 rows = 4" in
garter st blocked.

Notes

- This stole is worked from end to end. Increase along the right side for the first point, work even through the center, then decrease along the left side for the second point.
- It may be helpful to mark the right side of the work with a removable marker or safety pin.
- After completing tassels, tying a small knot at the end of each strand will prevent the chain ply yarn from unraveling.

STITCH GUIDE

Pleat Pattern (multiple of 32 + 15 sts)

Row 1: K15, *p1, k31; rep from * to end of row.

Rep Row 1 every row for Pleat Pattern.

Pleat Increase Pattern

Row 1: (RS) K1 front and back (k1f&b), k14. *p1, k31; rep from * to end of row—1 st inc'd.

Row 2: Work in Pleat Pattern to last st, place marker (pm), k1.

Row 3: K1f&b, (sl m), work in Pleat Pattern to end of row—1 st inc'd.

Rows 4 and 6: Work in Pleat Pattern to m, sl m, p1, knit to end of row.

Row 5: K1f&b, knit to m, sl m, work in Pleat Pattern to end of row—1 st inc'd.

Rows 7–36: Rep Rows 5 and 6—15 sts inc'd.

Row 37: K1f&b, pm, p1, knit to m, sl m, work in Pleat Pattern to end of row—1 st inc'd.

Rows 38 and 40: Rep Row 4.

Row 39: K1f&b, knit to m, sl m, p1, knit to m, sl m, work in Pleat Pattern to end of row—1 st inc'd.

Rows 41–64: Rep Rows 39 and 40, removing m on last row—12 sts inc'd.

Stole

CO 1 st.

Next row: (RS) K1f&b—2 sts.

Knit 1 WS row.

Inc row: (RS) K1f&b, knit to end of row—1 st inc'd.

Cont in garter st (knit every row), rep Inc row every RS row 14 more times—17 sts.

Next row: (WS) K15, p1, knit to end of row.

Rep Inc row—18 sts.

Rep last 2 rows 15 more times—33 sts.

Work 1 WS row.

Inc row: (RS) K1f&b, place marker (pm), p1, knit to end of row—34 sts.

Next row: (WS) K15, p1, knit to end of row.

Inc row: K1f&b, knit to m, slip m (sl m), p1, knit to end of row—1 st inc'd.

Rep last 2 rows 12 more times—47 sts.

Work 1 WS row, removing m.

Work Rows 1–64 of Pleat Increase Pattern (see Stitch Guide) 1 (3) times—79 (143) sts.

Work even in Pleat Pattern until piece measures 33 (83)" from CO, ending with a WS row.

Dec row: (RS) Work in patt to last 2 sts, k2tog—1 st dec'd.

Rep Dec row every RS row 76 (140) more times—2 sts rem.

Next row: K2tog—1 st rem.

Break yarn and fasten off.

Finishing

Weave in ends. Wet block.

MAKE 2 TASSELS

Make two 18" tassels, wrapping yarn 20 times and cinching tassel 1" from top (see Notes).







swallowtail shawl

Evelyn A. Clark

Finished Size

Width across top edge: 49".

Length from bottom center point to top edge: 23".

Yarn

Laceweight (#0 lace).

Shown here: Misti Alpaca Lace (100% baby alpaca; 437 yd [400 m]/ 50 g): #7120 sea mist, 1 ball.

Needles

Size U.S. 4 (3.5 mm).

Adjust needle size if necessary to obtain the correct gauge.

Notions

Marker (m); safety pin; size E/4 (3.5 mm) crochet hook; waste yarn in contrasting color; rustproof pins for blocking.

Gauge

17½ sts and 17½ rows = 4" in Budding Lace patt after blocking.

Notes

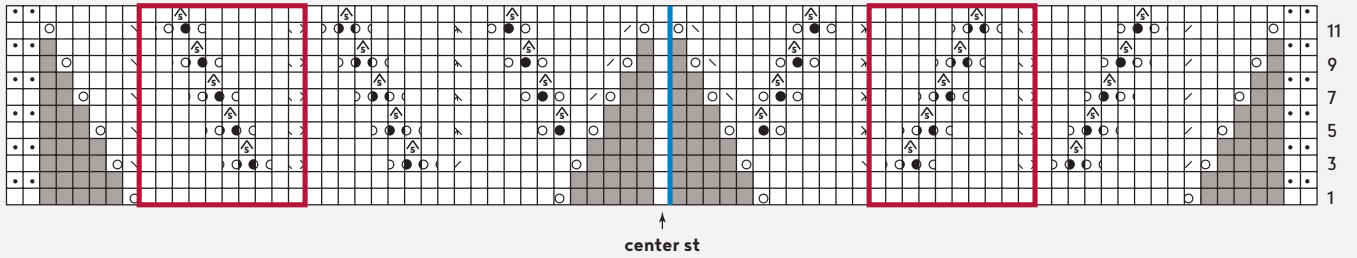
■ The first and last 2 stitches of every row are worked in garter stitch for top edge border.

■ The shawl increases 4 stitches every other row until Row 11 of edging.

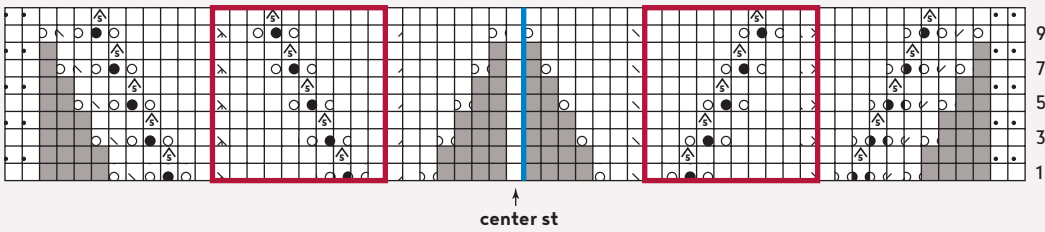
■ It is helpful to place a stitch marker after the yarnover and before the center stitch and to place a safety pin along side edge to mark beginning of odd-numbered rows.

■ The shawl can be made larger by working it with fingering, sport, or worsted-weight yarn on larger needles.

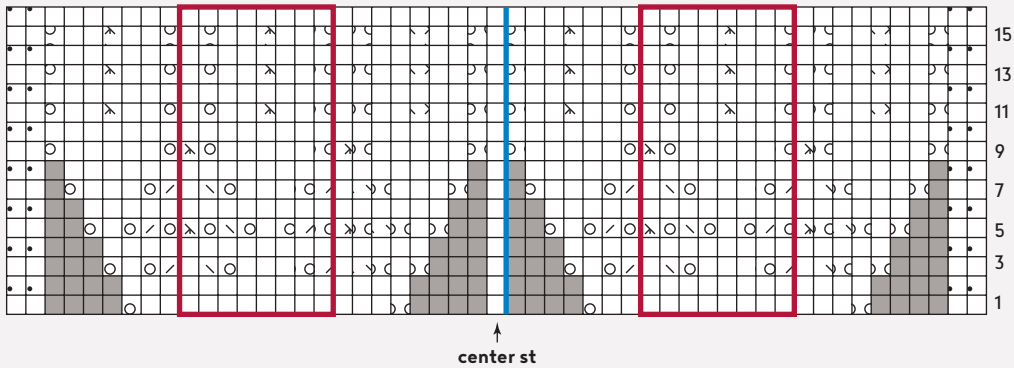
LILY OF THE VALLEY BORDER 1



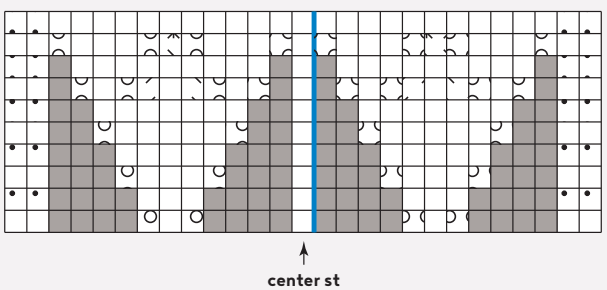
LILY OF THE VALLEY BORDER 2



PEAKED EDGING

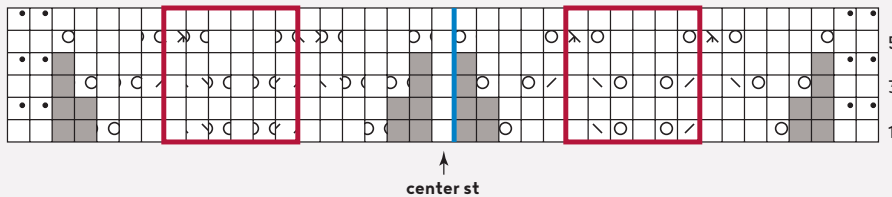


BUDDING LACE 1



- k on RS; p on WS
- p on RS; K on WS
- yo
- k2tog
- ssk
- sk2p: sl 1 lwise k2tog, pss0
- nupp: (kl, yo, kl, yo, kl) in same st
- p5tog
- no stitch
- pattern repeat
- marker position

BUDDING LACE 2



Top border

Beg at center back neck, work crochet chain provisional CO as foll: Using crochet hook and waste yarn, ch 4, fasten off.

With shawl yarn and knitting needles, pick up and knit 1 st in each of 2 nubs at back of chain—2 sts.

Rows 1–6: Knit.

Row 7: K2, pick up and knit 1 st in each of 3 garter ridges along side edge; unzip waste yarn chain, putting the 2 exposed sts onto left needle; knit these 2 sts—7 sts.

Work Rows 1–10 of Budding Lace 1 chart—27 sts.

Work Rows 1–6 of Budding Lace 2 chart 14 times total—195 sts.

Work Rows 1–12 of Lily of the Valley Border 1 chart—219 sts.

Work Rows 1–10 of Lily of the Valley Border 2 chart—239 sts.

Work Rows 1–16 of Peaked Edging chart—259 sts.

Next row: (RS) K2, *yo, k7, yo, k1; rep from * to last st, k1—323 sts.

Next row: (WS) Knit.

BO as foll: K2, *return both sts to left needle and k2tog through back loop (tbl), k1; rep from * until all sts have been bound-off.

Finishing

Weave in loose ends—do not trim tails until after blocking.

BLOCKING

Soak shawl for at least 20 minutes. Wrap in towel to remove excess water. Lay flat and smooth into shape. If using blocking wires, run through eyelets along top edge and pin. Pull out points along side edges at each yo, k1, yo and pin. Leave in place until thoroughly dry. Trim yarn ends.







potter's shawl

Jen Lucas

Finished Size

Width: 56".

Depth: 15".

Yarn

Fingering weight
(#1 super fine).

Shown here: Shalimar Yarns Breathless (75% superwash Merino wool, 15% cashmere, 10% silk; 420 yd [384 m]/3½ oz [100 g]); crayfish, 2 skeins.

Needles

Size U.S. 5 (3.75 mm): 24" circular (cir).

Adjust needle size if necessary to obtain the correct gauge.

Notions

Tapestry needle.

Gauge

16 sts and 36 rows = 4" in Garter st.

Notes

■ Shawl body is worked from the center neck to the bottom with increases at each edge. After the shawl body is completed, live stitches are left on the needle and bound off by working one stitch from the edging together with one stitch from the body as the lace edging is worked.

■ Slip stitches purlwise with yarn in back.

■ A circular needle is used to accommodate the large number of stitches.

■ For the Garter stitch portion of shawl, it may be helpful to mark the right side of the work.







blake shawl

Laura Reinbach

Finished Size

Width: 83".

Height: 21".

Yarn

Fingering weight
(#1 super fine).

Shown here: Brown Sheep
Company Nature Spun
Fingering (100% wool; 310 yd
[283 m]/ 1¾ oz [50 g]): #148
autumn leaves, 4 balls.

Needles

Size U.S. 4 (3.5 mm): 32"
circular (cir).

*Adjust needle size if necessary
to obtain the correct gauge.*

Notions

Tapestry needle.

Gauge

25 sts and 42 rows = 4" in
body patt.

Notes

- The triangle shaping occurs with a yarnover increase at the beginning of right-side rows and an ssk decrease at the beginning and a yarnover increase at the end of wrong-side rows.
- A circular needle is used to accommodate the large number of stitches.

Set-up

CO 4 sts.

Row 1: (RS) K1, p1, yo, p1, k1—5 sts.

Row 2: (WS) [K1, p1] 2 times, k1.

Row 3: K1, p1, yo, k1, p1, k1—6 sts.

Row 4: K1, p4, k1.

Row 5: K1, p1, yo, k2, p1, k1—7 sts.

Row 6: K1, p1, ssk, p1, yo, p1, k1.

Row 7: K1, p1, yo, knit to last 2 sts, p1, k1—1 st inc'd.

Row 8: K1, p1, ssk, purl to last 2 sts, yo, p1, k1.

Rep Rows 7 and 8 six more times—14 sts.

Body

Row 1: (RS) K1, p1, yo, *p1, k1; rep from * to end—1 st inc'd.

Row 2 and all WS rows: K1, p1, ssk, purl to last 2 sts, yo, p1, k1.

Row 3: K1, p1, yo, knit to last 2 sts, p1, k1—1 st inc'd.

Row 5: K1, p1, yo, k6, p1, k5, p1, k1—17 sts.

Row 7: Rep Row 3—18 sts.

Row 9: K1, p1, yo, k2, p1, k7, p1, k3, p1, k1—19 sts.

Row 11: Rep Row 3—20 sts.

Row 13: Rep Row 1—1 st inc'd.

Row 15: Rep Row 3—1 st inc'd.

Row 17: K1, p1, yo, k2, *p1, k7; rep from * to last 2 sts, p1, k1—1 st inc'd.

Row 19: Rep Row 3—1 st inc'd.

Row 21: K1, p1, yo, k6, *p1, k7; rep from * to last 8 sts, p1, k5, p1, k1—1 st inc'd.

Row 23: Rep Row 3—1 st inc'd.

Row 25: Rep Row 1—1 st inc'd.

Row 27: Rep Row 3—1 st inc'd.

Row 29: K1, p1, yo, k6, *p1, k7; rep from * to last 4 sts, [p1, k1] 2 times—1 st inc'd.

Row 31: Rep Row 3—1 st inc'd.

Row 33: Rep Row 17—1 st inc'd.

Row 35: Rep Row 3—1 st inc'd.

Row 37: Rep Row 1—1 st inc'd.

Row 39: Rep Row 3—1 st inc'd.

Row 41: K1, p1, yo, k2, *p1, k7; rep from * to last 6 sts, p1, k3, p1, k1—1 st inc'd.



Row 43: Rep Row 3—1 st inc'd.

Row 45: Rep Row 29—1 st inc'd.

Row 47: Rep Row 3—1 st inc'd.

Row 49: Rep Row 1—1 st inc'd.

Row 51: Rep Row 3—1 st inc'd.

Row 53: Rep Row 21—1 st inc'd.

Row 55: Rep Row 3—1 st inc'd.

Row 57: Rep Row 41—1 st inc'd.

Row 59: Rep Row 3—1 st inc'd.

Row 60: (WS) Rep Row 2.

Rep Rows 13-60 six more times—188 sts.

Work Rows 13-48 once—206 sts.

Seed st border

Row 1: (RS) K1, p1, yo, *p1, k1; rep from * to end—1 st inc'd.

Row 2: K1, p1, ssk, k1, *p1, k1; rep from * to last 2 sts, yo, p1, k1.

Row 3: K1, p1, yo, p1, *k1, p1; rep from * to last 2 sts, p1, k1—1 st inc'd.

Row 4: K1, p1, ssk, *p1, k1; rep from * to last 2 sts, yo, p1, k1.

Rep Rows 1-4 nine more times—226 sts.

Loosely BO all sts in patt.

Finishing

Weave in ends. Block to measurements.







shetland shawl

Rebecca Blair

Finished Size

Width: 20".

Length: 60".

Yarn

Laceweight (#0 lace).

Shown here: Jamieson & Smith Shetland Supreme Lace Weight 1-ply (100% Shetland wool; 436 yd [400 m] $\frac{7}{8}$ oz [25 g]): fawn, 2 skeins.

Needles

Size U.S. 4 (3.5 mm).

Adjust needle size if necessary to obtain the correct gauge.

Notions

Markers (m); tapestry needle.

Gauge

22 sts and 33 rows = 4" in Center patt, blocked.

Notes

■ The edging of this shawl is worked first, then stitches are picked up and worked for the center. The shawl is completed with a knitted-on edging.

Shawl

CO 5 sts.

Begin with a WS row, work Rows 1-6 of Bottom Edging chart 24 times, then work Row 1 once more.

BO all sts, but do not fasten off last st. Do not turn.

Next row: (RS) Yo, picking up in each garter ridge. *pick up and knit 1 st, yo, pick up and knit 2 sts; rep from * 23 times; pick up and knit 1 more st—99 sts total.

Knit 1 WS row.

Next row: (RS) Work Right Edging chart over 10 sts (inc'd to 11), place marker (pm), work Center chart to last 10 sts, pm, work Left Edging chart to end.

Cont to work charts as est through Row 34 of Center chart, then rep Rows 3-34 of Center chart 13 more times, then work Rows 3-29 once more.

Next row: (WS) Work edging in patt to m, sl m, knit to m, sl m, work edging in patt to end.

Rep last row 2 more times.

Next row: (RS) K1, [k2tog, k1] 2 times, [k2tog, k2] 21 times, [k2tog, k1] 2 times, k2tog—73 sts rem.

Using the knitted method, CO 5 sts—78 sts.

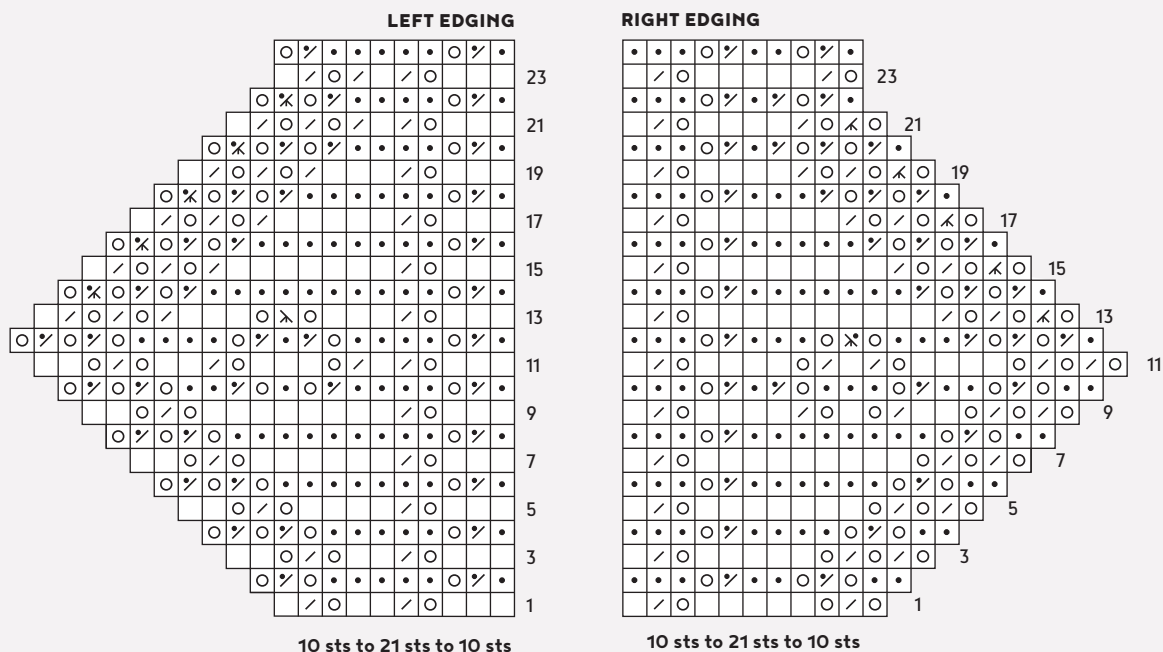
Next row: (WS) K4, k2tog (last edging st and first body st), turn.

Work Rows 1-6 of Top Edging chart 24 times, then work Rows 1 and 2 once more—5 sts rem.

BO all sts.

Finishing

Weave in ends. Block to measurements.

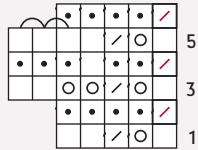


- k on RS; p on WS
- k on WS
- o yo
- / k2tog on RS
- \ k2tog on WS
- / \ k2tog (last edging st and next body st)
- λ sl 1, k2tog, pass sl st over on RS
- λ sl 1, k2tog, pass sl st over on WS
- / \ k3tog on RS
- x k3tog on WS
- pattern repeat
- ⤵ bind off 1 st
- ⤵ st rem on right needle after last BO st



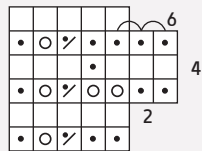


TOP EDGING



5 sts to 7 sts to 5 sts

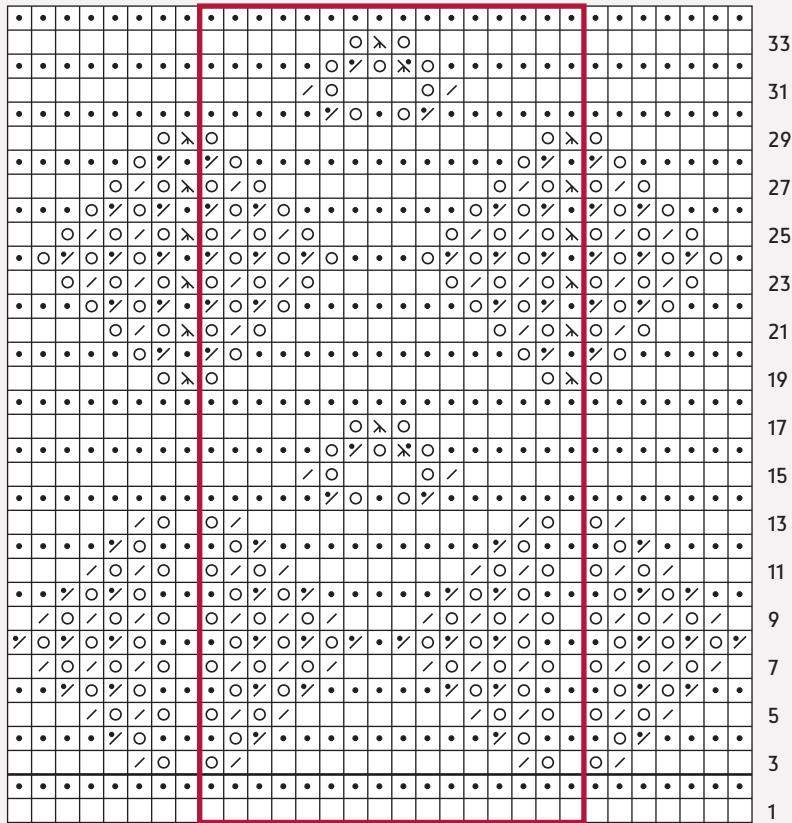
BOTTOM EDGING



1 (WS)

5 sts to 7 sts to 5 sts

CENTER



16-st rep

- k on RS; p on WS
- k on WS
- yo
- k2tog on RS
- k2tog on WS
- k2tog (last edging st and next body st)
- sl 1, k2tog, pass sl st over on RS
- sl1, k2tog, pass sl st over on WS
- k3tog on RS
- k3tog on WS
- pattern repeat
- bind off 1 st
- st rem on right needle after last BO st



squall line shawl

Romi Hill

Finished Size

Width: 78".

Height: 37".

Yarn

Worsted weight (#4 medium).

Shown here: Malabrigo Yarn Merino wool Worsted (100% Merino wool; 210 yd [192 m]/3½ oz [100 g]); #98 tuareg, 5 skeins.

Needles

Size U.S. 9 (5.5 mm): 32" circular (cir).

Adjust needle size if necessary to obtain the correct gauge.

Notions

Markers (m); cable needle (cn); tapestry needle.

Gauge

16 sts and 21 rows = 4" in charted body motif.

Notes

■ The body of this triangular shawl is worked back and forth from the bottom up. Stitches are picked up and a small border is worked along the lower two edges, then the edging is knitted on sideways.

■ A circular needle is used to accommodate the large number of stitches.

STITCH GUIDE

Elastic BO

K1, *k1, transfer 2 sts to left needle, k2tog tbl; rep from * to end.





Body

CO 1 st.

Work Rows 1-20 of Point chart—34 sts.

Work Rows 1-12 of Body chart 11 times—210 sts.

Work Rows 1-12 of Top chart—228 sts.

REV ST ST I-CORD BO

Using the knitted method, CO 5 sts, p3, k2tog tbl, *wyb, return 4 sts to left needle, bring yarn between needles to front, p3, p2tog tbl; rep from * to end—no body sts rem, 4 I-cord sts rem.

Wyb, return 4 sts to left needle, bring yarn between needles to front, p3tog, p1—2 sts rem.

Border

With RS facing and working into loops along selvedge edges, pick up and knit 164 sts along side, place marker (pm), 10 sts along bottom point, pm, and 164 sts along side, then pick up and purl 2 sts in rev St st BO—342 sts total.

Row 1: (WS) [K1tbl] 2 times, purl to last 2 sts, [k1tbl] 2 times.

Row 2: (RS) [K1tbl] 2 times, yo, k1tbl, yo, [k2tog, yo] 81 times, k1tbl, yo, sl m, [k1tbl, yo] 10 times, sl m, k1tbl, [yo, k2tog] 81 times, yo, k1tbl, yo, [k1tbl] 2 times—357 sts.

Row 3: Rep Row 1.

Edging

Using the knitted method, CO 22 sts.

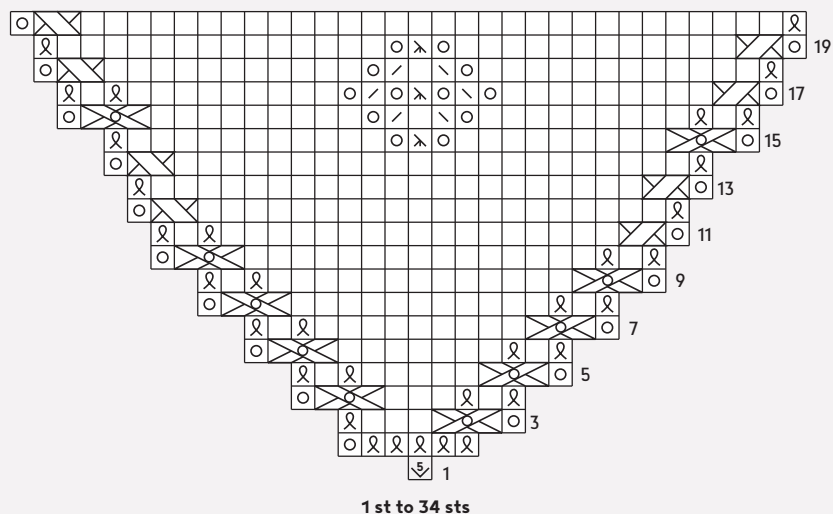
Work Rows 1-10 of Edging chart once, then work Rows 11-22 of chart 58 times, then work Rows 23-29 once—no body sts rem.

With WS facing and using the elastic method (see Stitch Guide), BO all sts.

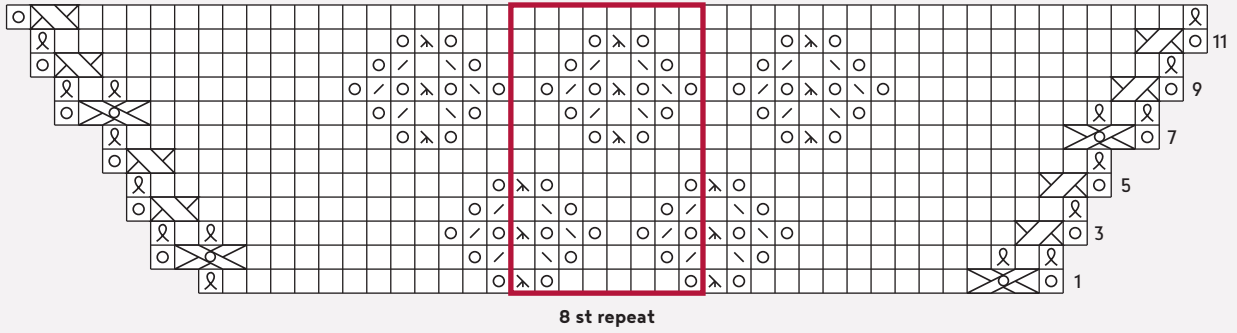
Finishing

Weave in ends. Block to measurements.

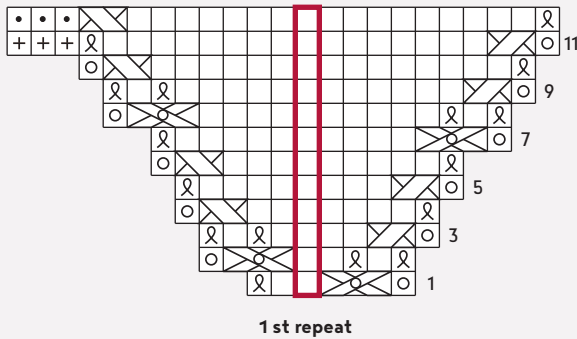
POINT



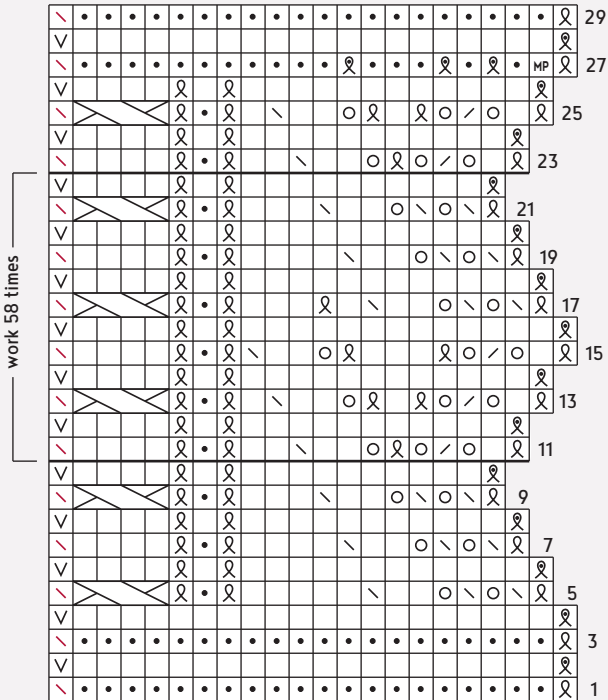
BODY



TOP



EDGING



- k on RS; p on WS
- p on RS; k on WS
- k1tbl on RS; p1tbl on WS
- p1tbl on RS; k1tbl on WS
- yo
- k2tog on RS; p2tog on WS
- ssk on RS; ssp on WS
- k2tog tbl (last edging st and next body st)
- sl 1, k2tog, pss0
- sl 1 pwise wyf on WS
- M1P
- (k1, yo, k1, yo, k1) in same st
- backward-loop CO
- pattern repeat

on RS: sl 1 st onto cn, hold in back, k1, k1 from cn

on WS: sl 1 st onto cn, hold in front, p1, p1 from cn

on RS: sl 1 st onto cn, hold in back, k1, yo, k1 from cn

on WS: sl 1 st onto cn, hold in front, p1, yo, p1 from cn

sl 2 sts onto cn, hold in front, k2, k2 from cn



town square shawl

Romi Hill

Finished Size

Width: 84".

Height at center: 35".

Yarn

Laceweight (#0 lace).

Shown here: All for Love of Yarn Brilliance Lace (55% superwash Bluefaced Leicester wool, 45% silk; 875 yd [800 m]/100 g); kiss me pink, 1 skein.

Needles

Main triangle and borders: size U.S. 3 (3.25 mm): 24" or 32" circular (cir).

Cast-on: size U.S. 5 (3.75 mm): 24" or 32" cir.

Adjust needle size if necessary to obtain the correct gauge.

Notions

Markers (m); cable needle (cn); removable markers or coil-less safety pins; blocking wires; T-pins; tapestry needle.

Gauge

18 sts and 30 rows = 4" in Chart E pattern on smaller needle.

Notes

■ Short-rows in Charts A and B are used to shape the main triangle. Each right-side row begins and ends with a 2-stitch twist. Each wrong-side row begins by slipping the first stitch of the first twist, and ends by turning before working the second stitch of the last twist. This reduces the number of working stitches in the center section by 2 and shapes the triangle with a little help from a few ordinary decreases along the way. You may find

it helpful to mark the turning points with markers that can be removed and replaced at each turn.

■ If you use markers to set off individual pattern repeats, you'll need to move the markers in the following chart rows to accommodate a double decrease that falls next to an outlined pattern repeat: Rows 7, 9, 11, 19, 21, and 23 of Chart A; Row 3 of Chart C; Rows 1 and 9 of Chart D-2; and Rows 3, 7, 11, and 15 of Chart E.

■ For perky little nupps, make sure not to pull yarn too tightly. If you have a difficult time keeping the stitches relaxed, add an extra yarnover at the end of the nupp stitches on right-side rows. On the following wrong-side row, drop the extra yarnover to provide extra slack and make it easier to purl the 7 nupp stitches together.

STITCH GUIDE

M1P

Insert left needle tip from back to front under the horizontal strand between the needles, then purl the lifted strand—1 st inc'd.

M1

Insert left needle tip from back to front under the horizontal strand between the needles, then knit the lifted strand—1 st inc'd.

Nupp

Very loosely, work ([k1, yo] 3 times, k1) in same st—7 sts made from 1 st. Purl the 7 nupp sts tog on the following row as shown on chart.

T2L

Sl 1 st to cn and hold in front, k1tbl, then k1tbl from cn.

T2R

Sl 1 st to cn and hold in back, k1tbl, then k1tbl from cn.

T2R-dec

Sl 2 sts to cn and hold in back, k1tbl, then k2togtbl from cn—3 sts dec'd to 2 sts.

K2-into-3

K2tog without removing sts from left needle, yo, then work same 2 sts k2tog again, and remove sts from needle—3 sts made from 2 sts.

K3-into-3

K3tog without removing sts from left needle, yo, then work same 3 sts k3tog again, and remove sts from needle—3 sts made from 3 sts.

5-into-1 dec

Sl 2 sts individually knitwise, k3tog, pass 2 slipped sts over—5 sts dec'd to 1 st.

Picot

Use the knitted method to CO 3 sts. K2togtbl, k1tbl last new CO st, pass first st over second st on right needle, k1tbl next shawl st, pass first st over second st on right needle—all new CO sts have been removed; 1 shawl st rem on right needle.

Main triangle

With larger needles, use the knitted method to CO 217 sts.

Change to smaller needles and knit 2 rows—1 garter ridge on RS.

Work Row 1 of Chart A across all sts, working the 8-st repeat box 21 times and ignoring the short-row turn symbol at the end of the chart because the very first Row 1 is worked over all sts—215 sts.

Work Row 2 of Chart A to last st, turn work—1 unworked st at end of short-row.

Work Rows 3–24 of Chart A, working each short-row to turning point indicated on chart, and dec as shown—209 sts total; with RS facing, 186 worked sts between turning gaps (including sl st at start of Row 24) with 12 unworked sts before and 11 unworked sts after them.

Work Rows 1–24 of Chart A, working the 8-st repeat box 17 times, and turning at the end of Row 1 as shown—201 sts total; with RS facing, 154 worked sts between turning gaps (including Row 24 sl st), with 24 unworked sts before and 23 unworked sts after them.

Work Rows 1–24 of Chart A, working the 8-st repeat box 13 times—193 sts total; with RS facing, 122 worked sts between turning gaps (including Row 24 sl st), with 36 unworked sts before and 35 unworked sts after them.

Work Rows 1–24 of Chart A, working the 8-st repeat box 9 times—185 sts total; with RS facing, 90 worked sts between turning gaps (including Row 24 sl st), with 48 unworked sts before and 47 unworked sts after them.

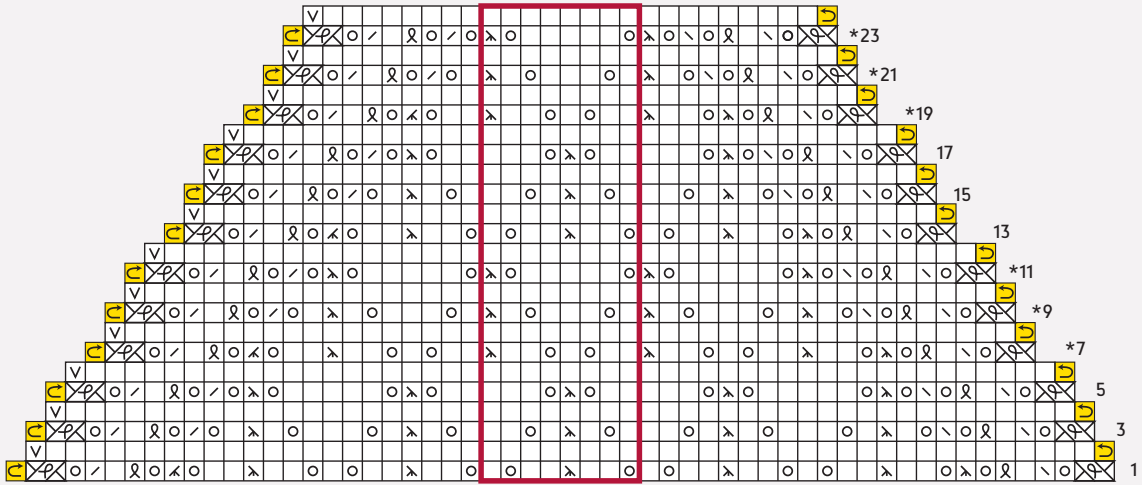
Work Rows 1–24 of Chart A, working the 8-st repeat box 5 times—177 sts total; with RS facing, 58 worked sts between turning gaps (including Row 24 sl st), with 60 unworked sts before and 59 unworked sts after them.

Work Rows 1–24 of Chart A, working the 8-st repeat box 1 time—169 sts total; with RS facing, 26 worked sts between turning gaps (including Row 24 sl st), with 72 unworked sts before and 71 unworked sts after them.

Work Rows 1–20 of Chart B—163 sts total; with RS facing, 1 worked st between turning gaps, with 81 unworked sts both before and after it.



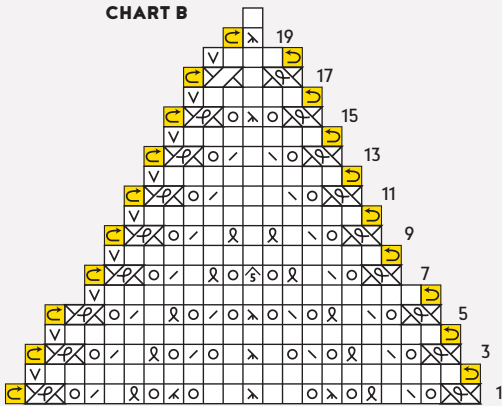
CHART A



repeat according to instructions

*see notes

CHART B



- | | |
|---|---|
| knit on RS; purl on WS | M1P on RS; M1 on WS
(see Stitch Guide) |
| knit 1 through back loop
(k1tbl) on RS | work [k1, p1] in yo
of previous row |
| k1tbl on WS | sl 1 st wyf on WS |
| k2tog on RS; p2tog on WS | no stitch |
| ssk on RS; p2togtbl on WS | pattern repeat |
| k3tog | or turn at end of short-row |
| sl 1, k2tog, pssso | T2L (see Stitch Guide) |
| 5-into-1 dec
(see Stitch Guide) | T2R (see Stitch Guide) |
| yo | T2R-dec (see Stitch Guide) |

CHART C



work 80 times

center st

*see notes

CHART D1

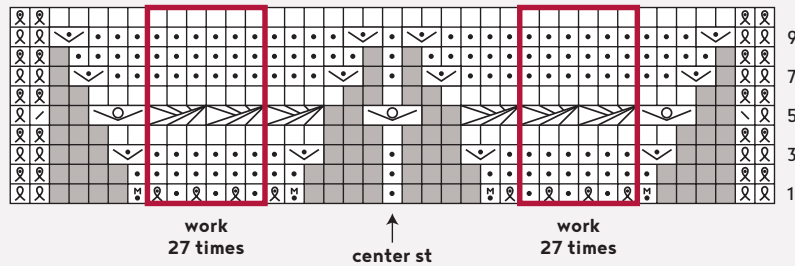
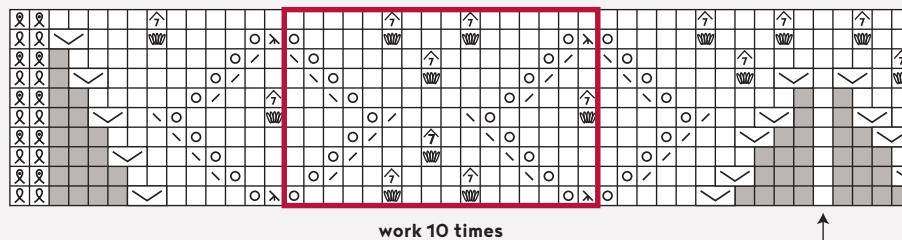


CHART D2



> continue chart D2 here

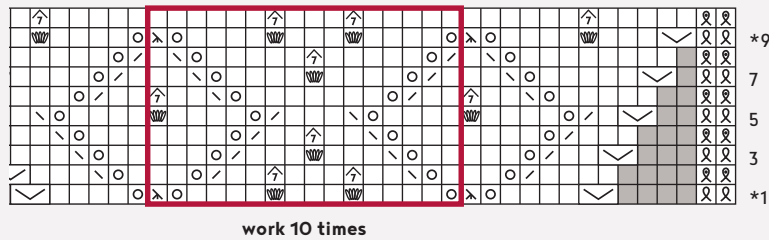
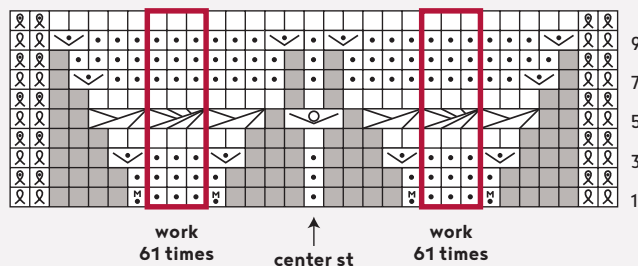


CHART D3



- | | | | |
|--|--|--|------------------------------|
| | knit on RS; purl on WS | | nupp (see Stitch Guide) |
| | purl on RS; knit on WS | | p7tog on WS |
| | knit 1 through back loop (k1tbl) on RS | | no stitch |
| | p1tbl on RS; k1tbl on WS | | pattern repeat |
| | k2tog on RS; p2tog on WS | | k1f&b on RS; p1f&b on WS |
| | ssk on RS; p2togtbl on WS | | k1f&b on WS |
| | k3tog | | work [k1, yo, k1] in same st |
| | sl 1, k2tog, pss0 | | k2-into-3 (see Stitch Guide) |
| | yo | | k3-into-3 (see Stitch Guide) |
| | M1P on RS; M1 on WS (see Stitch Guide) | | |



Transition

Cut yarn. Slide sts to beg of left needle tip, and rejoin yarn to all sts, ready to work a RS row.

Work Row 1 of Chart C—325 sts.

Work Row 2 of Chart C—489 sts.

Work Rows 3 and 4 of Chart C—331 sts; 1 center st and 165 sts each side.

Diamond inner border

Work Rows 1-10 of Chart D1—351 sts.

Work Rows 1-10 of Chart D2—371 sts.

Work Rows 1-10 of Chart D3—391 sts; 1 center st and 195 sts each side.

Outer border

Work Rows 1-34 of Chart E—455 sts; 1 center st and 227 sts at each side.

Finishing

BO all sts as foll:

[Picot, BO 4 sts, return st on right needle after last BO onto left needle] 56 times—3 sts rem before center st.

Work next 7 sts as picot, k1tbl, pass first st over second st on right needle, k2togtbl, pass first st over second st on right needle, return rem st on right needle (center st) onto left needle, picot, k1tbl, pass first st over second st on right needle, BO 3 sts, return st on right needle onto left needle—224 sts rem.

[Picot, BO 4 sts, return st on right needle to left needle] 55 times—4 sts rem.

Work last 4 sts as picot, BO 3 sts, return st on right needle onto left needle, picot—1 st rem. Fasten off last st. Wash in wool wash. Gently squeeze out water, then roll in towels to remove excess moisture. Insert blocking wires into damp shawl through ends of outer border picots and upper edge diamond points. Place on a flat surface and pin to measurements. Allow to air-dry thoroughly before removing wires and pins. Weave in loose ends.

-  knit on RS; purl on WS
-  purl on RS; knit on WS
-  knit 1 through back loop (k1tbl) on RS
-  p1tbl on RS; k1tbl on WS
-  k2tog on RS; p2tog on WS
-  ssk on RS; p2togtbl on WS
-  k3tog
-  sl 1, k2tog, pssso
-  yo
-  M1P on RS; M1 on WS (see Stitch Guide)
-  nupp (see Stitch Guide)
-  p7tog on WS
-  no stitch
-  pattern repeat



yorkville wrap

Sachiko Burgin

Finished Size

Width: 18½".

Front length: 32".

Back length: 26¾".

Yarn

Aran weight (#4 medium).

Shown here: Rowan Felted Tweed Aran (50% wool, 25% alpaca, 25% viscose; 95 yd [87 m]/ 50 g): #740 garden, 10 balls.

Needles

Size U.S. 10 (6 mm): 32" circular (cir).

Adjust needle size if necessary to obtain the correct gauge.

Notions

Removable marker (m); stitch holder; tapestry needle.

Gauge

14 sts and 19 rows = 4" in St st.

Notes

- This shawl is worked back and forth in two separate pieces, which are then joined and worked as one piece.
- A circular needle is used to accommodate the large number of stitches.

STITCH GUIDE

Sk2p

Sl 1 kwise, k2tog, pssso—
2 sts dec'd.

First half

CO 65 sts. Do not join.

Work Rows 1-14 of Chart A 5 times.

Work Rows 1-10 of Chart B once.

Next row: (WS) K2, purl to last 2 sts, k2.

Next row: (RS) Knit. Rep last 2 rows until piece measures 32" from CO, ending with a WS row.

Break yarn and place sts on holder.

Second half

Work as for first half, but do not break yarn.

Joining row: (RS) Knit to last 2 sts, sl last 2 sts kwise, one at a time, to right needle, place 65 sts from first half onto left needle, with RS facing, then k2tog, p2sso, place a removable marker (pm) in single rem st, knit to end—127 sts.

Next row: (WS) K2, purl to last 2 sts, k2.

Dec row: (RS) Knit to 1 st before marked st, sk2p, remove m and replace it in single st, knit to end—2 sts dec'd.

Rep last 2 rows 60 more times—5 sts rem.

Next row: (WS) K2, p1, k2.

Next row: (RS) K1, sk2p, k1—3 sts rem.

Next row: (WS) K3.

Next row: (RS) Sk2p—1 st rem.

Fasten off last st.

Finishing

Weave in ends and block.

CHART A

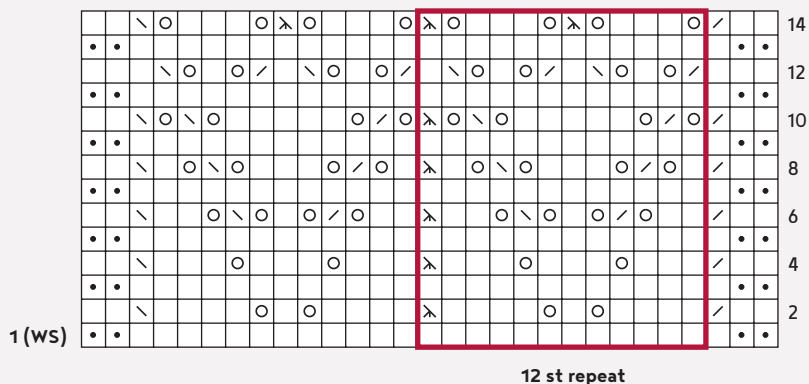
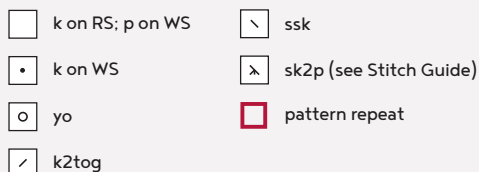
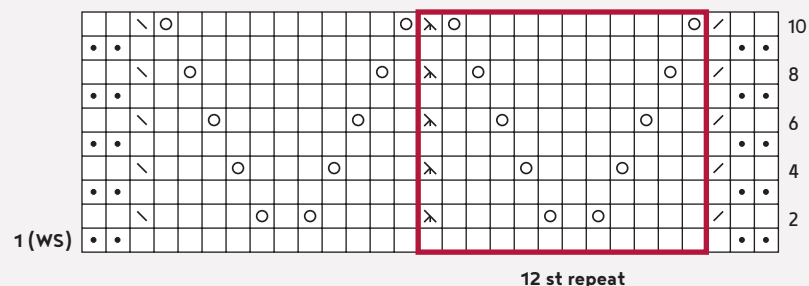


CHART B





waxwing shawl

Susanna IC

Finished Size

Width: 75".

Height: 21½".

Yarn

Fingering weight (#1 super fine).

Shown here: Manos del Uruguay Marina (100% superwash Merino wool; 875 yd [800 m]/3½ oz [100 g]); #N0026 hueso, 1 skein.

Needles

Size U.S. 7 (4.5 mm): 32" circular (cir).

Size U.S. 8 (5mm) for BO.

Adjust needle size if necessary to obtain the correct gauge.

Notions

894 size 6 mm Swarovski rondelle crystals; size U.S. 10 (0.75 mm) steel crochet hook; tapestry needle; blocking pins.

Gauge

17 sts and 26 rows = 4" in body patt on smaller needle.

Notes

- This crescent shawl begins at the center top and increases along the upper edge to its full width.
- A circular needle is used to accommodate the large number of stitches.

STITCH GUIDE

S2kp2

Sl 2 sts as if to k2tog, k1, pass 2 sl sts over—2 sts dec'd.

Note: In rows where dec is placed directly next to patt rep border, if you have used m for rep you will need to move m to form dec.

Place bead

Insert crochet hook through hole in bead and slide bead up onto hook. Insert hook pwise into st on left needle and transfer st to hook. Slide bead down hook and onto st. Transfer st to left needle and knit it.



Shawl

With smaller needle, CO 7 sts.

Knit 2 rows.

Row 1: (RS) K2, yo, k3, yo, k2—9 sts.

Row 2 and all WS rows: K2, purl to last 2 sts, k2.

Row 3: K2, yo, [place bead (see Stitch Guide), yo] 5 times, k2—15 sts.

Row 5: K2, yo, place bead, yo, k1, yo, k2tog, yo, k3, yo, ssk, yo, k1, yo, place bead, yo, k2—21 sts.

Row 7: K2, yo, place bead, yo, k1, yo, k2tog, yo, *k3, yo, s2kp2 (see Stitch Guide), yo; rep from * to last 9 sts, k3, yo, ssk, yo, k1, yo, place bead, yo, k2—6 sts inc'd.

Row 8: K2, purl to last 2 sts, k2.

Rep last 2 rows 46 more times—303 sts.

Work Rows 1-31 of Border chart—399 sts.

With larger needle, BO all sts as foll:

*K2tog, k1, transfer 2 sts to left needle; rep from * to last 2 sts, k2tog—1 st rem.

Fasten off last st.

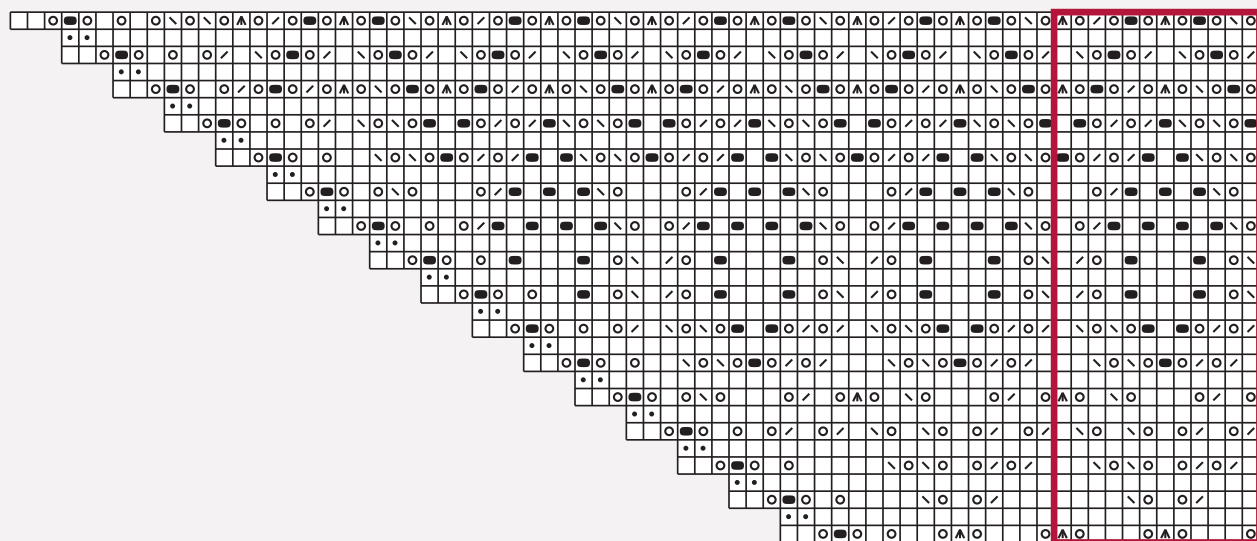
Finishing

Weave in ends. Wet-block to measurements.



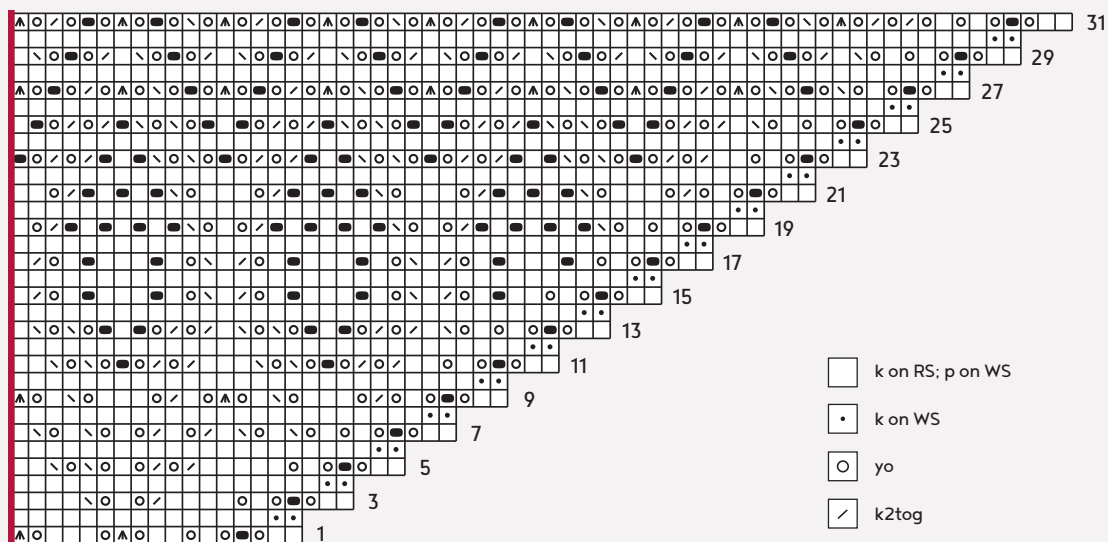
BORDER

continue border chart below >



12-st rep

> continue border chart here



- k on RS; p on WS
- k on WS
- yo
- k2tog
- ssk
- sl 2 as if to k2tog, k1, p2sso
- place bead
- pattern repeat





o'kelly's chapel shawl

Shirley Paden

Finished Size

Width: 27¾".

Length: 66¼".

Yarn

DK weight (#3 light).

Shown here: Vijay Fibers Grandioso (100% silk; 328 yd [300 m]/3½ oz [100 g]): sliver/gray, 4 skeins.

Needles

Size U.S. 6 (4 mm).

Size U.S. 7 (4.5mm).

Adjust needle size if necessary to obtain the correct gauge.

Notions

Waste yarn for provisional CO; stitch holder; tapestry needle.

Gauge

18 sts and 22 rows = 4" in charted patt on larger needles.

Notes

■ This shawl is worked in two pieces and grafted together in the center. The edging is worked separately and sewn to each end.

First half

With larger needles and using a provisional method, CO 125 sts.

Work Rows 1-46 of Beads & Trees chart 3 times, then work Rows 1-36 once more.

Break yarn. Place sts on holder.

Second half

With larger needles and using a provisional method, CO 125 sts.

Work Rows 1-46 of Beads & Trees chart 3 times, then work Rows 1-37 once more.

Break yarn, leaving a 3½ yd tail for grafting. Place sts of first half on one

needle and sts of 2nd half on the other needle. Hold pieces WS tog, with first half in front and 2nd half in back.

With tail threaded on a tapestry needle, graft sts tog using garter st grafting as foll:

Step 1: Insert tapestry needle pwise into st on front needle, leave st on needle.

Step 2: Insert tapestry needle pwise into st on back needle, leave st on needle.

Step 3: Insert tapestry needle kwise into st on front needle, remove st from needle, insert tapestry needle pwise into next st on front needle, leave st on needle.

Step 4: Insert tapestry needle kwise into st on back needle, remove st from needle, insert tapestry needle pwise into next st on back needle, leave st on needle.

Rep Steps 3 and 4 until 1 st rem on each needle.

Insert tapestry needle kwise into st on front needle and remove st from needle, insert tapestry needle kwise into st on back needle and remove st from needle.

Finishing

Weave in ends. Block to measurements.

EDGING

With smaller needles, CO 7 sts.

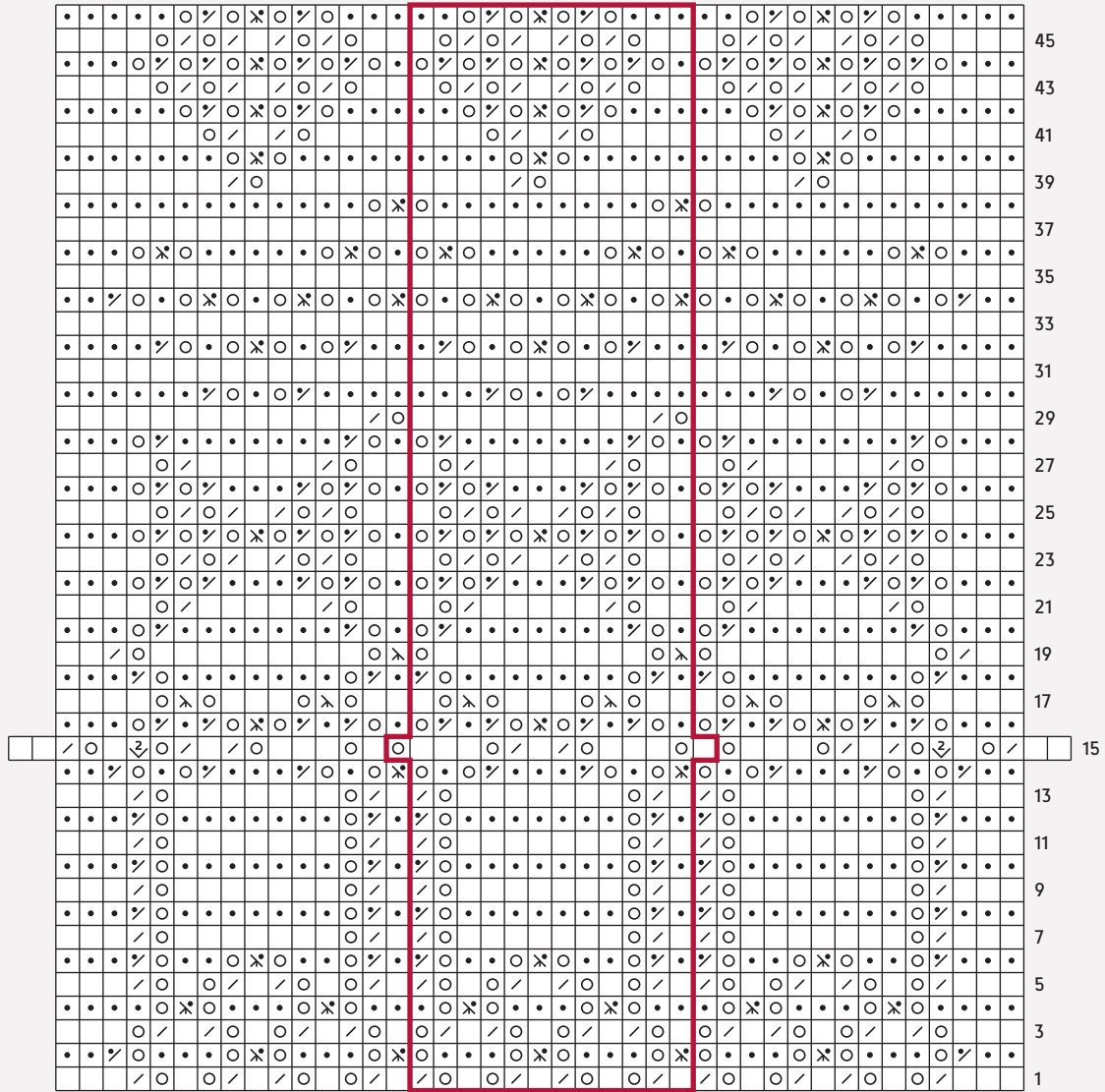
Knit 1 row.

Work Rows 1–14 of Edging chart 13 times.

BO all sts. Remove -provisional CO and place sts onto smaller needle. Sew straight selvedge edge of edging to sts on needle. Rep edging for other end of shawl.



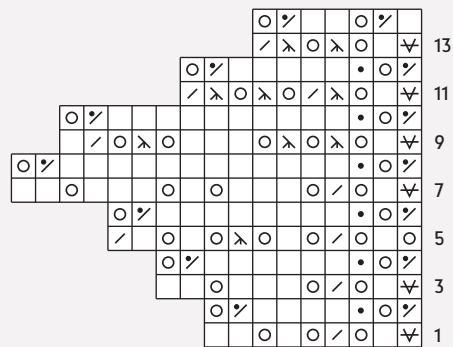
BEADS & TREES



12 st to 14 st to 12 st repeat

- | | |
|------------------|--------------------------|
| k on RS; p on WS | sl 1, k2tog, pssso on RS |
| p on RS; k on WS | sl 1, k2tog, pssso on WS |
| yo | sl 1 pwise wyf |
| k2tog on RS | k1f&b |
| k2tog on WS | pattern repeat |

EDGING



7 sts to 17 sts to 7 sts