

PINEAPPLE STITCH THROW



CÍRCULO

PINEAPPLE STITCH THROW

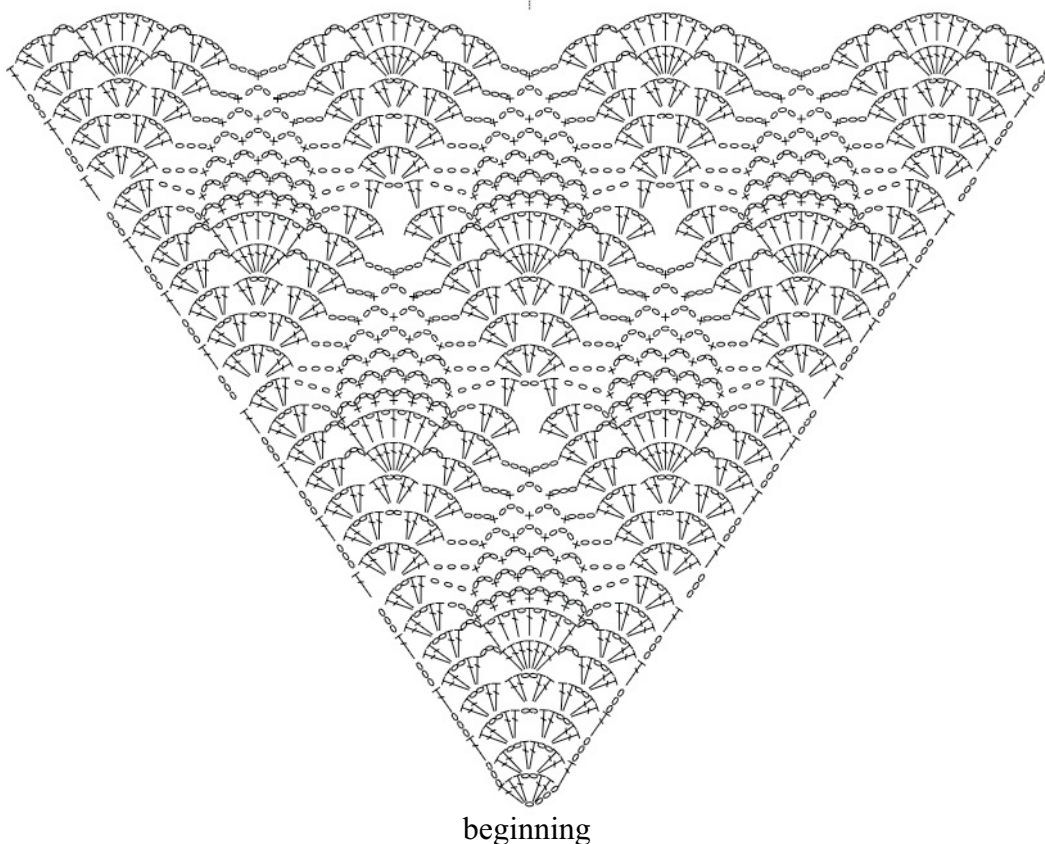
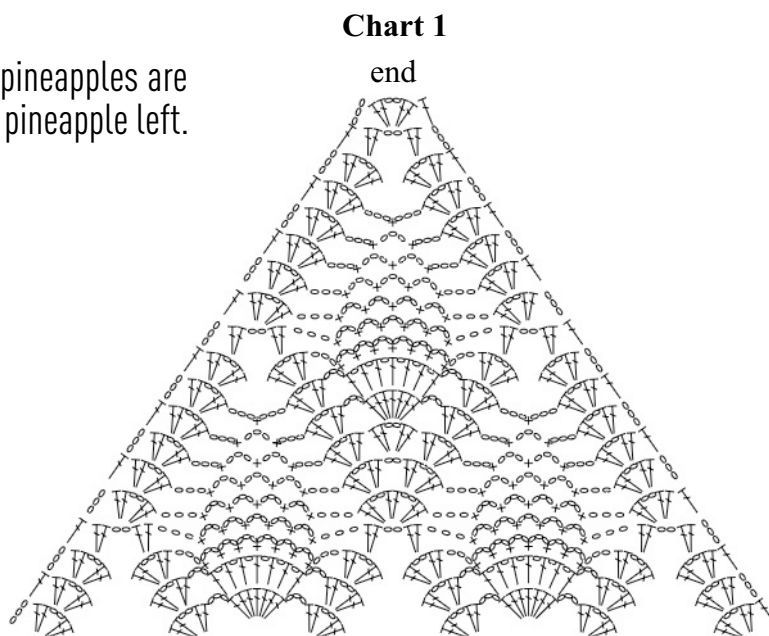
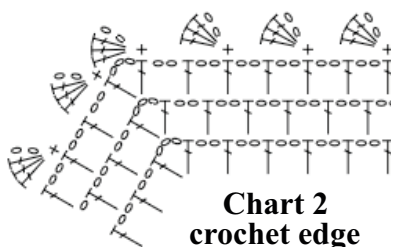
Created by: Heloisa Mazoni
Size: 65.5" x 51" (with edges)

Material

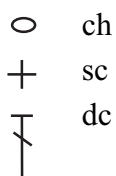
2 balls Natural Cotton 4/4 - color 20
Crochet hook C2

Ch 4 and follow chart 1. Increase until 10 pineapples are formed and then decrease until you have 1 pineapple left.

Crochet edge: follow chart 2 around piece.



Stitch Key



Disclaimer: Measurements are approximate due to differences between centimeters and inches, needle sizes and tension (gauges).
All care has been taken to allow accurate completion of the pattern.